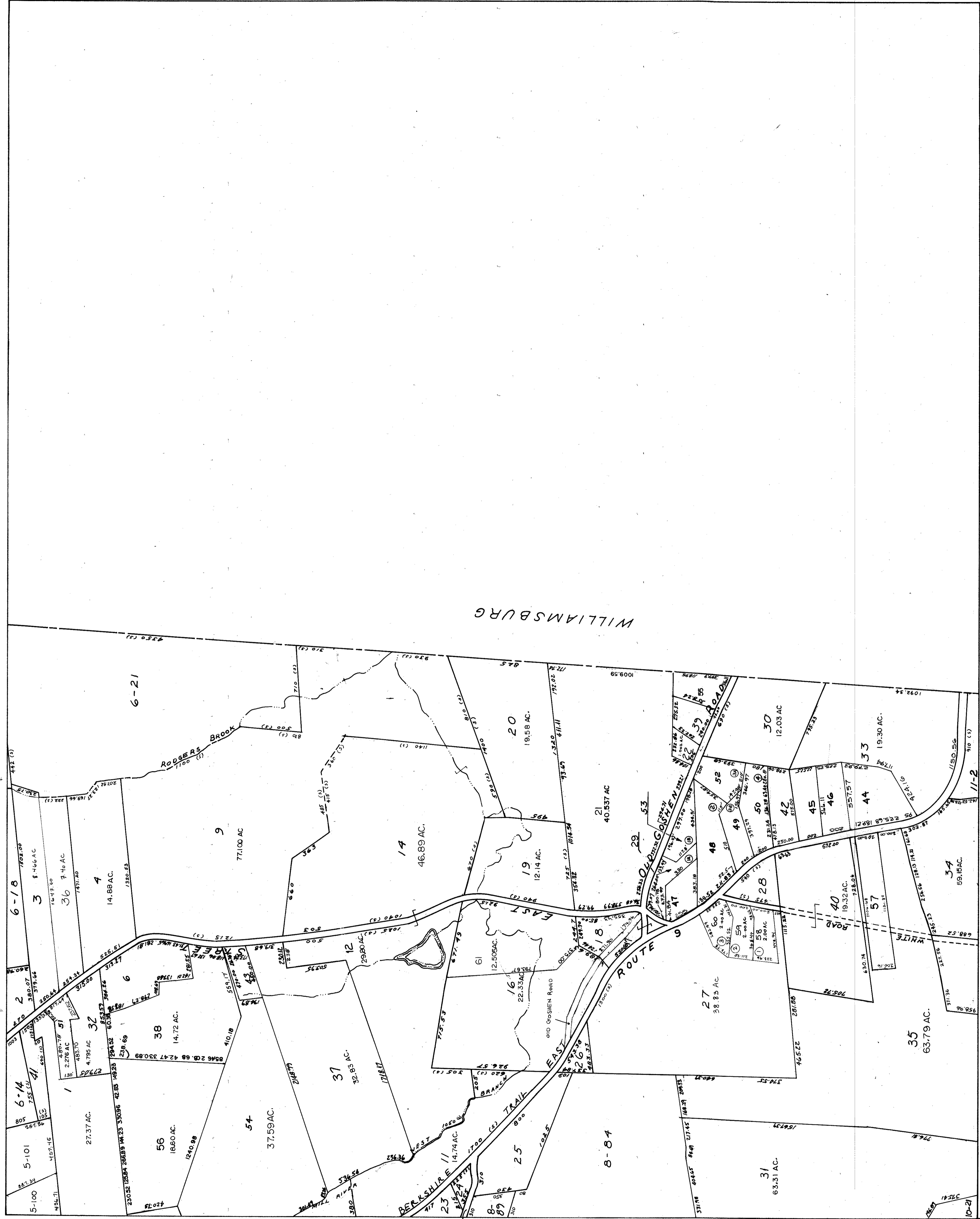


DATE of REVISIONS: DEC, 1983 - TO LOT #43  
 DEC, 1985 - ADD LOT 44  
 Dec. 1986 - Add Lots 45, 46, 47  
 AUGUST 2001 REVISED LOT 38  
 ADDED LOT 56  
 PARCELS 5, 7, 8 & 13 DELETED PRIOR TO 1997  
 AUGUST 2002 ADDED LOT 57  
 DEC 2006 NOTE RELEASE ON 32  
 REVISE 37  
 APP 54, 51, 40, 5, 100, 5, 101  
 DELETE 5, 49

MARCH 2009 - COMBINED LOTS-36 WITH 3  
 10-WITH-9  
 15-1-WITH-34

MARCH 2009 - ADD LOT - 61  
 JUNE 2010  
 ADD-OLD GOSHEN ROAD  
 ADD-LOT-36  
 MARCH 2013-COMBINED- 8-146 WITH 9-31  
 11-5 WITH 9-34  
 NOV. 2017 - REVISED LOTS 21, 29, 32, 51, 55  
 COMBINED LOT 15 WITH LOT 9



# TOWN OF GOSHEN MASSACHUSETTS

## ASSESSORS PLAN



PREPARED BY  
 ALMER HUNTLEY JR. & ASSOCIATES, INC.  
 REGISTERED LAND SURVEYORS & CIVIL ENGINEERS  
 238 BRIDGE STREET  
 NORTHAMPTON, MASSACHUSETTS  
 REVISED AND REPRINTED BY  
 CARTOGRAPHIC ASSOCIATES, INC.  
 LITTLETON, NEW HAMPSHIRE 03561

|   |    |    |
|---|----|----|
| 1 | 2  | 3  |
| 4 | 5  | 6  |
| 7 | 8  | 9  |
|   | 10 | 11 |

DATE OF INDEXING: 1967  
 DATE OF REVISIONS: 3-28-79

REVISED AND REPRINTED BY  
 HOLMBERG & HOWE INC.  
 EASTHAMPTON, MASS.

SHEET NO. 9

