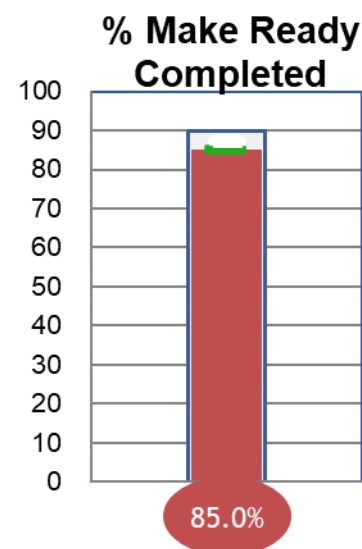
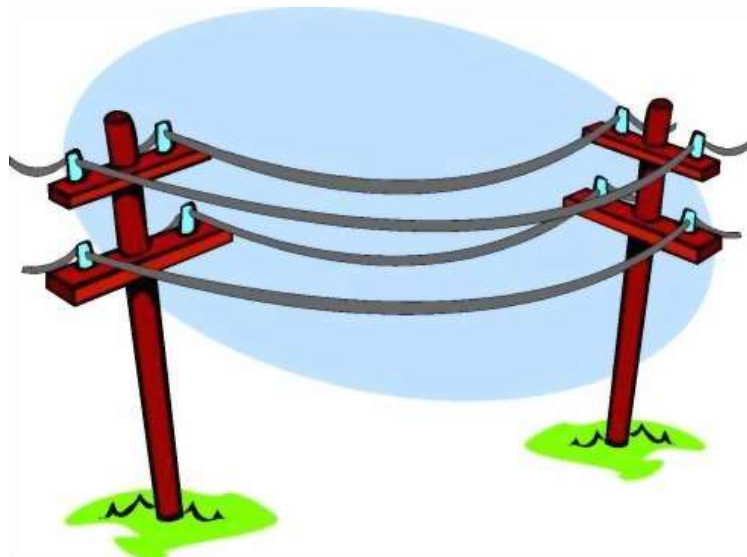


GOSHEN BROADBAND – HIGH SPEED INTERNET

Where are we with utility company make ready?

✓ *All 108 required pole replacements have been completed*

✓ *Most utility company lines have been moved*



WHAT IS THE CONSTRUCTION STATUS?

- ✓ Distribution network construction awarded to TriWire Engineering in May 2020
- ✓ Network hut ordered and electronics received
- ✓ Estimated project costs have been determined
- ✓ Grants identified and mostly received – additional grant opportunities may be available in the future
- ✓ Engineering details & costs to connect homes to poles identified
- ✓ Internet Service Provider (ISP) and Network Operator (NO) selected

OTHER ITEMS OF INTEREST

HOW SHOULD I STAY INFORMED	WHEN CAN I SIGN UP?	FUTURE ITEMS TO BE COMPLETED
Visit the Town website (goshen-ma.us) updates listed under Capital Projects/Broadband & in Town News & Announcements on the Home page	Sign up campaign will be announced later this year	Service options
Robocalls (sign up through the Emergency Management page of the Town website)	WG&E will host informational sessions, in Goshen, before sign up	Monthly service costs
Post cards mailed to you by the Town	WG&E will develop a web page, to link from the Goshen website, to facilitate sign up and FAQs	Drop policy pricing to determine what will be subsidized by the town

WHAT'S UP WITH OUR NEIGHBORS?

NEIGHBORS	MAKE READY (AS OF 6/30/2020)	FIBER TO POLES (AS OF 6/30/2020)	FIBER TO HOME (AS OF 6/30/2020)	ISP & NETWORK OPERATOR
ASHFIELD	Complete	Complete in mid August 2020	Began in June 2020	Westfield Gas & Electric
CHESTERFIELD	Almost Complete	To begin in August 2020	Not started	Westfield Gas & Electric
CUMMINGTON	Complete	Complete	To begin last week in July or first week in August 2020	Westfield Gas & Electric
GOSHEN	85% complete	To begin in Sept. or Oct. 2020	Not started	Westfield Gas & Electric
PLAINFIELD	Complete	Complete	Still in process, estimated to finish August 2020	Westfield Gas & Electric

ALL TIMELINES ARE UTILITY COMPANY & CONSTRUCTION COMPANY DEPENDENT AND SUBJECT TO FREQUENT CHANGES