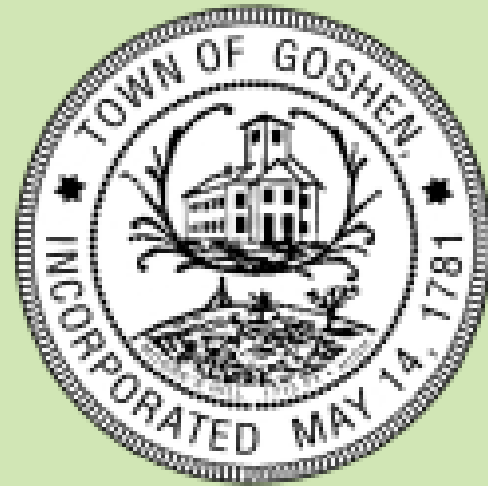


The Open Space Committee and Nicholas Dines, FASLA have collaborated to provide the residents of Goshen with a proposed design for the enhancement of the town center. The following images show the existing conditions and different viewpoints of the design elements.

# Re-Imagine Goshen Center



*Community Forum, July 20, 2022*

*6:00-8:00 pm, Town Hall*

# Welcome!

Goshen Open Space Committee: Sandy Papush, *Chair*

Lorraine Brisson

Melanie Dana

Jane Hillman

Pat Morey

Dave Christopolis, *Executive Director, Hilltown Community  
Development*

Nicholas Dines, *FASLA, retired UMass professor of Landscape  
Architecture*

Bob Goss, *Goshen Tree Warden*

# Re-Imagine Goshen Center

## **Mission Statement**

To create a vibrant town center that provides a recreational, cultural, and social gathering place that welcomes people of all ages and abilities. Promote community pride through beautification of our town center. Provide a landscape to encourage physical activity and social gatherings.

## Goals

- Redesign the existing park to include design elements such as benches, picnic area, plantings.
- Install barriers to Route 9 traffic.
- ADA compliant walking paths.
- Install bike rack.
- Replace tennis courts with a town common and pavilion.
- Improve traffic flow, parking, and pedestrian safety in parking lot.

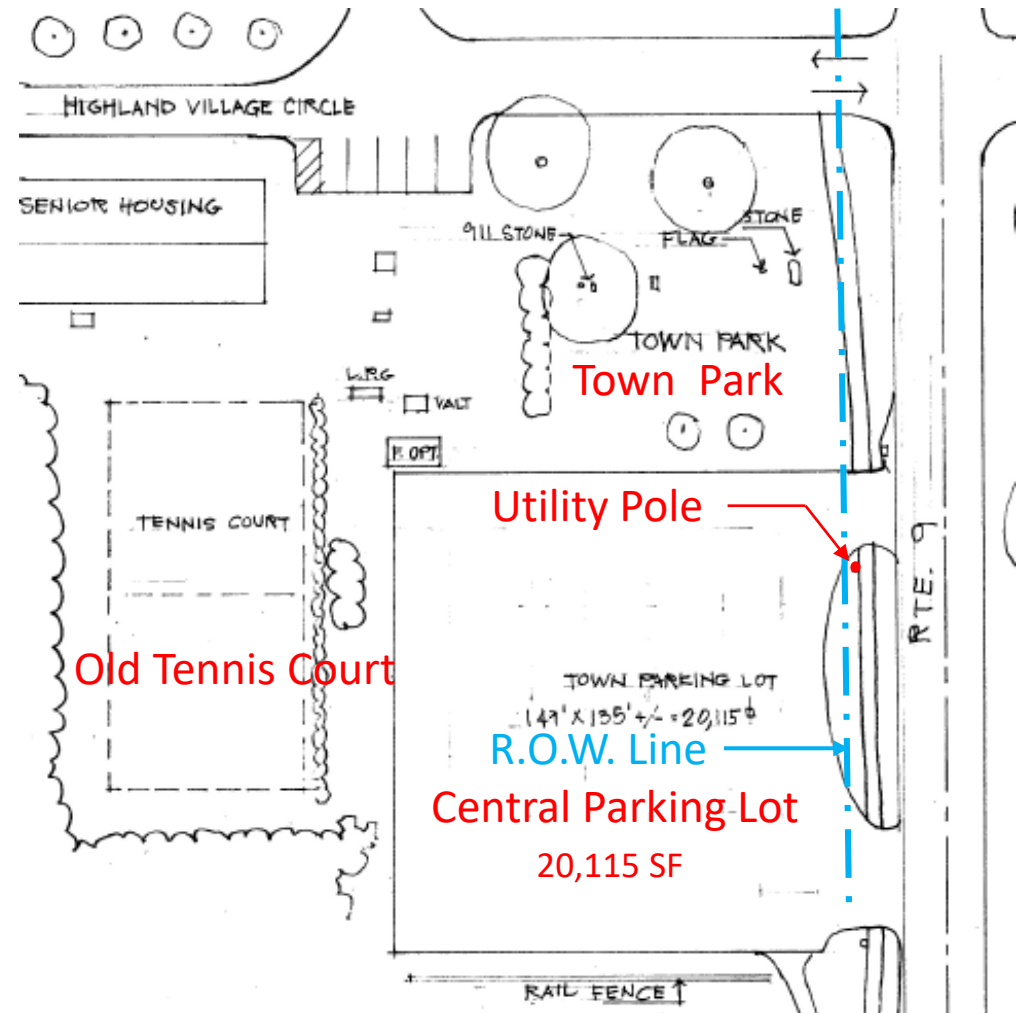
# Re-imagine Goshen Center

---

N. Dines, FASLA

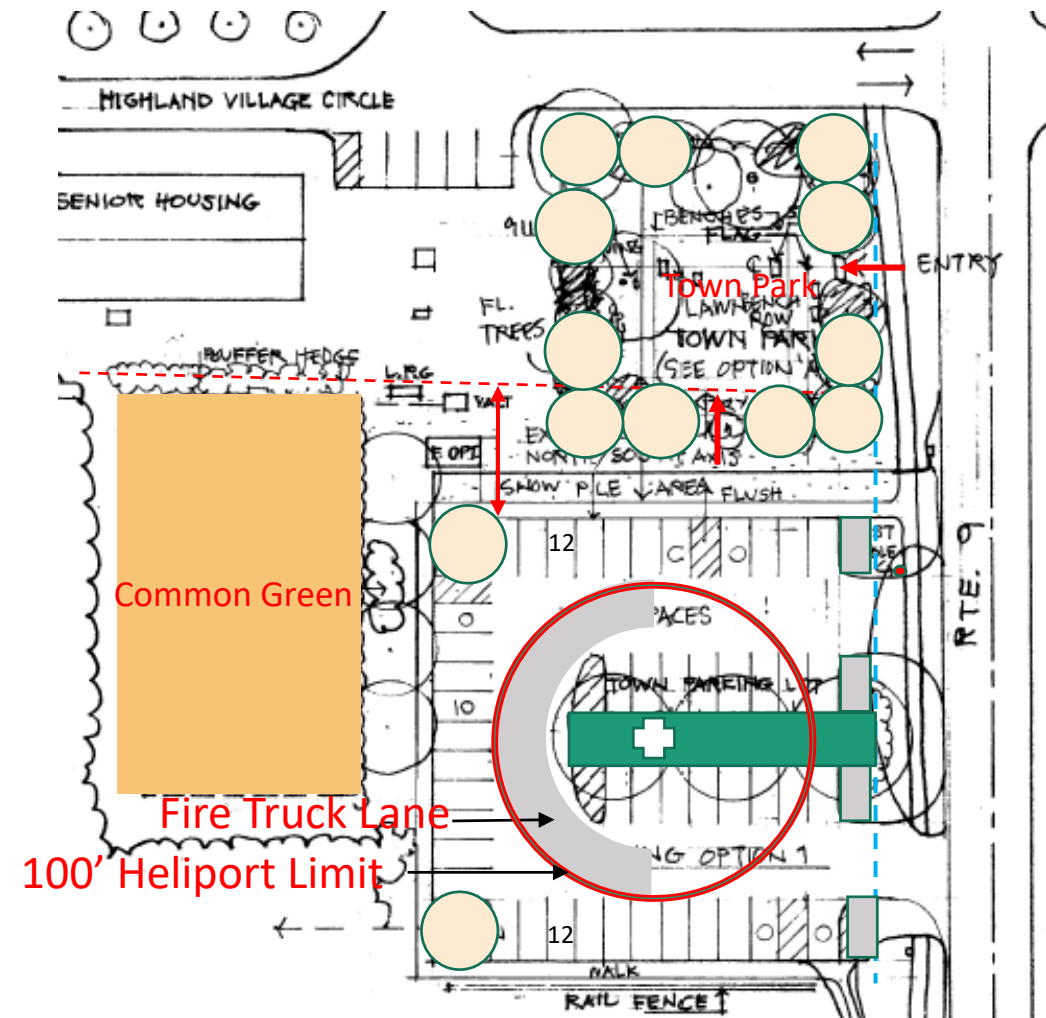
# Goshen Center Study Suggestions:

1. **Parking:** Parking layouts should reflect accessible parking standards, efficient layouts, and snow clearing strategies.
2. **Town Park:** Enclose with flowering plants to welcome pedestrians from the public sidewalk and the parking lot; rearrange memorial stones for accessible viewing.
3. **Tennis Court:** Create an accessible “Great Lawn” for a variety of Town gathering events.



# Schematic Plan with Parking Option 1

- Creates a 52 space parking lot within the property line.
  - Moves entrance South of the U.P. to allow a modular layout that expands the Town Park area, and accommodates winter emergency helicopter landing [Does not allow for Shade Trees].
  - Designates accessible parking stalls on perimeter edges.
  - Removes hedge and adds trees at edge of Tennis Court / “Common Green.”
- [Note: Nine 10’ stalls eliminates one regular stall].





# Town Park Schematic Plan: Option A

## KEY FEATURES:

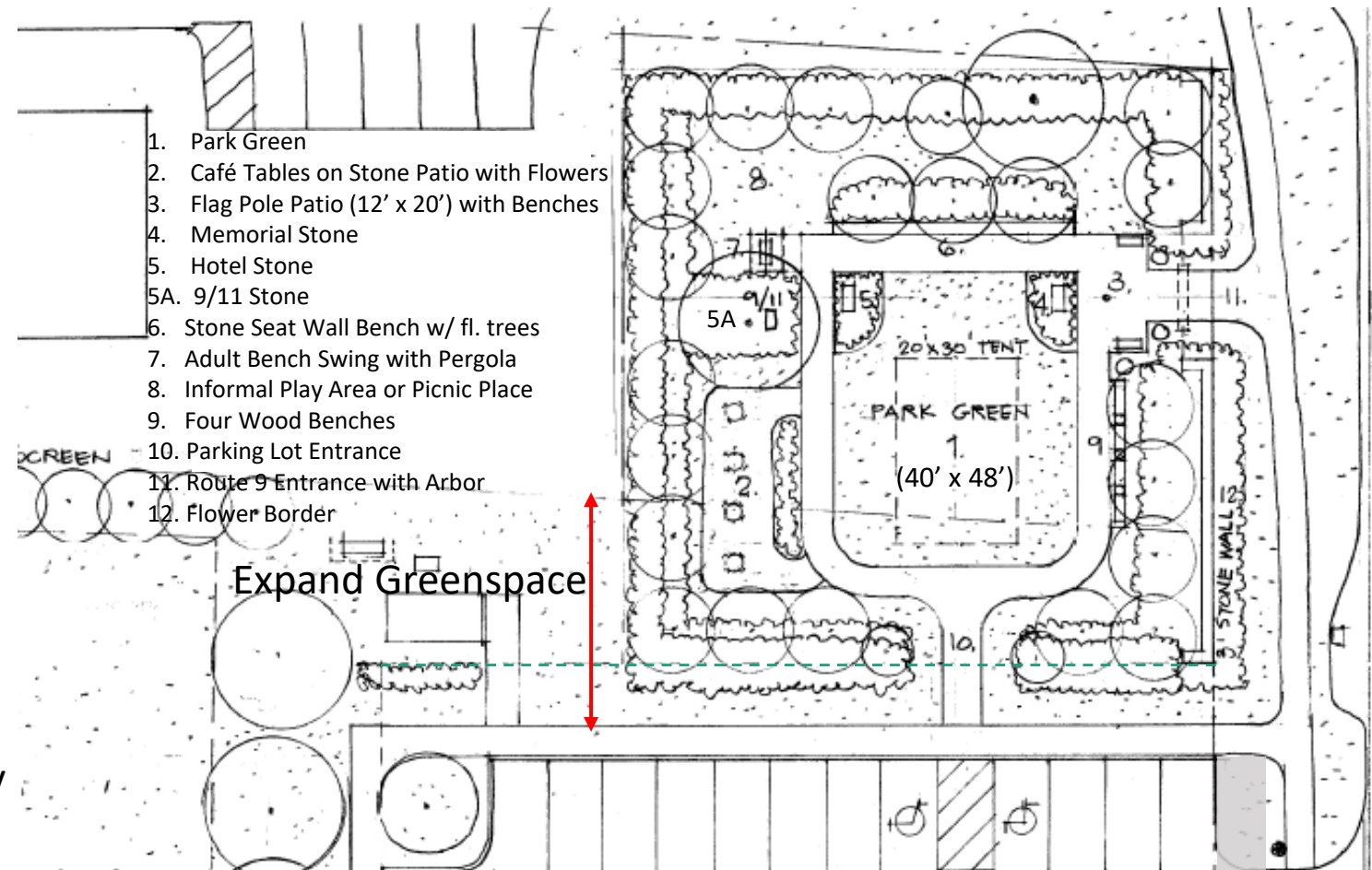
New South and East Accessible Entrances.  
(10, 11)

Flag Plaza aligned with memorial stones (12' x 20'). (3, 4, 5, 5A)

Park Green surrounded by accessible walks, flowering trees, shrubs and walls (40' x 48').

Café Tables, Seatwall, and Benches provide seating options. (2, 6, 9)

Pergola Swing and lawn picnic area for family options. (7, 8)

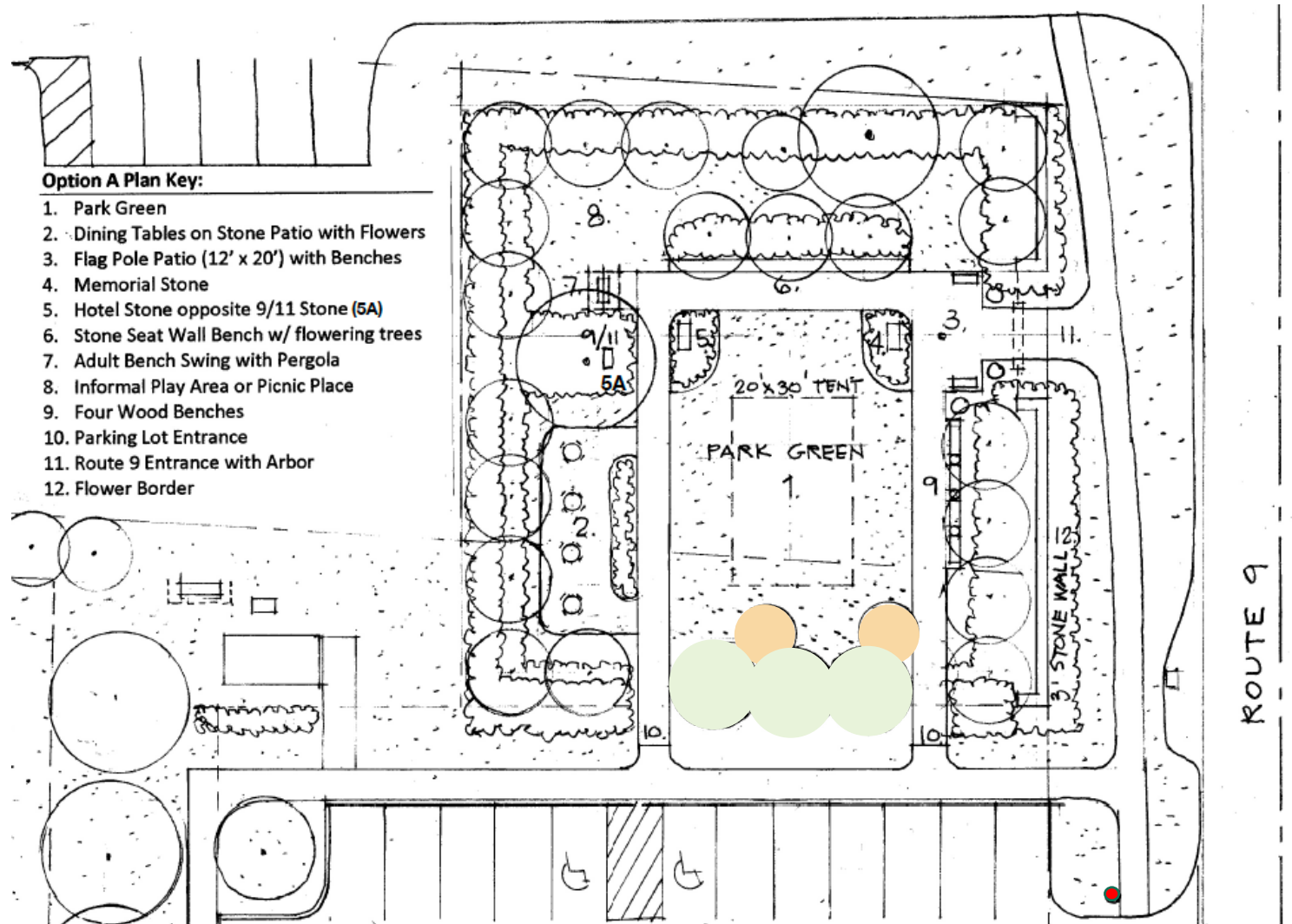


Goshen Center Study

# Town Park Schematic Plan: Option B

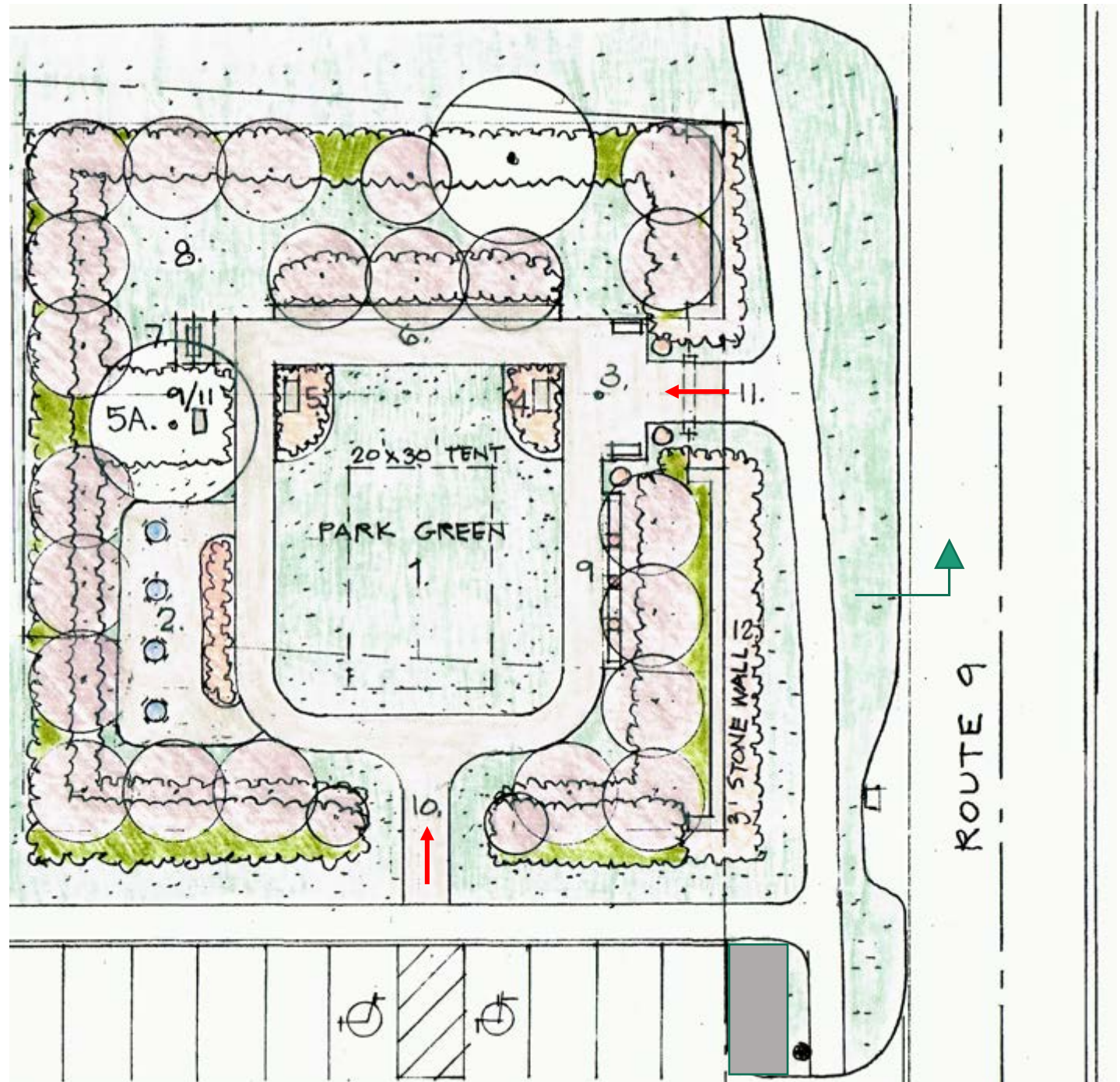
## Variation on Option A: Example of “Design Development” Phase

- Tree Hydrangeas remain in place. ●
- Walkways join parking walkway at 10.
- Three flowering trees echo those at 6. ●●●
- Accessible parking stalls moved West.
- Walkway rounded at 4. and 5.



# Option A: Detail

- Flowering trees encircle the Park with screen plants on North, West and South.
- Accessible walks link Park features.
- Flower beds mark stones and add seasonal color.
- Benches, Seatwall, and Café tables offer a variety of seating options.
- Park Green offers open space for events, presentations, performances, and a tent.



# Site Section and Detail Studies: Option A

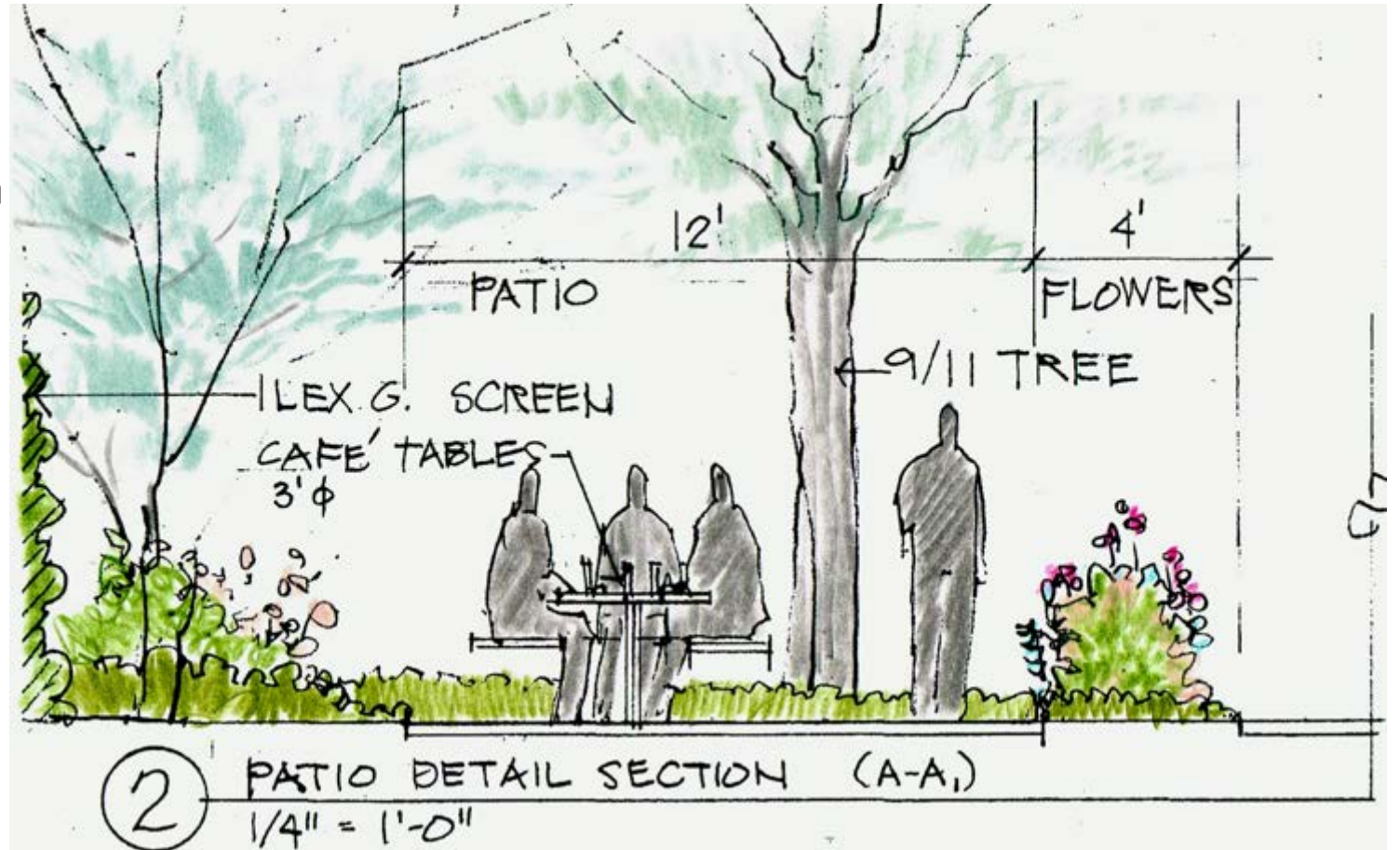


The 40' x 48' Park Green is flanked by walkways to meet ADA accessibility requirements to access benches, café tables, the swing and the Ceremonial Flag Plaza. The park is ringed with several species of flowering small to medium sized trees and evergreen screens on the North, South and West boundary lines.

# Café Table Patio at Park Green West Edge

The 12' x 32' Café Table Patio is shaded from western sun with flowering trees and separated from the park green by a perennial flower bed containing echinacea, liatris, nepeta, and other pollinator friendly species.

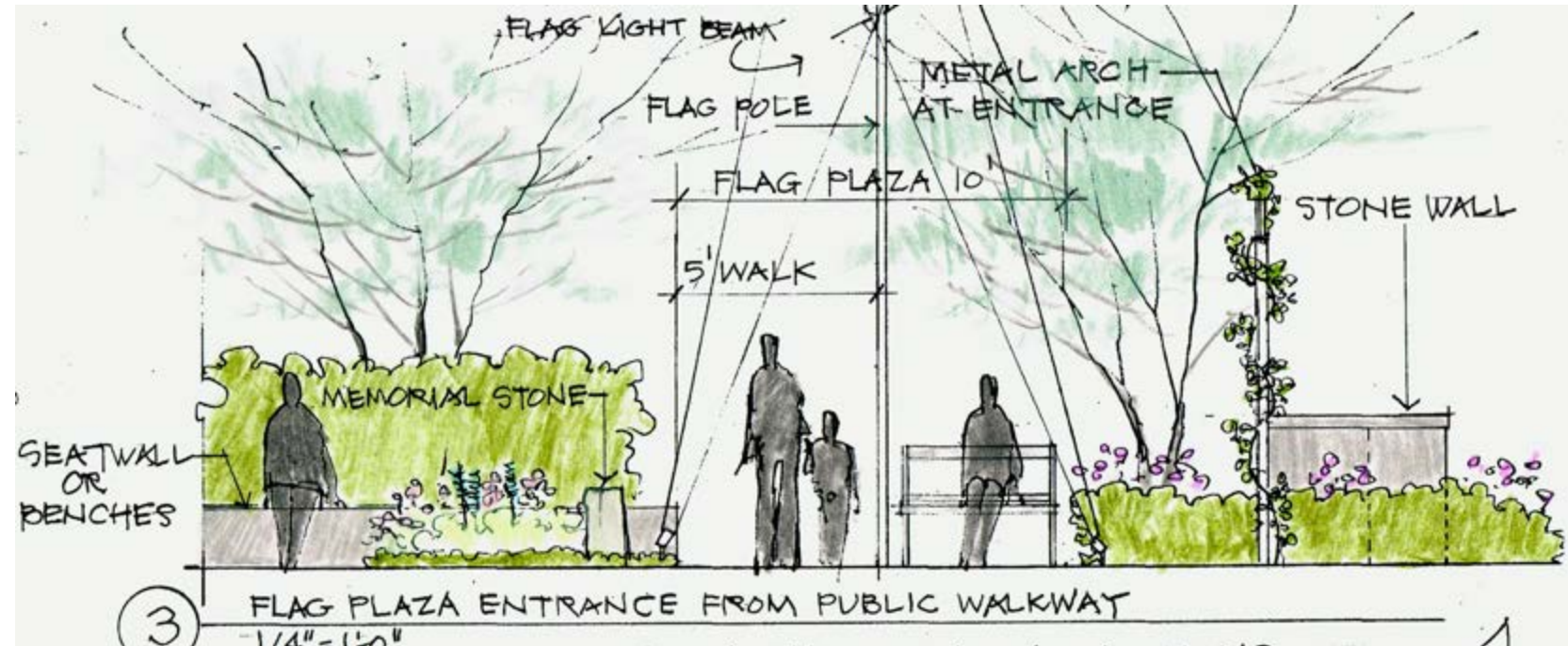
The patio is paved with large sized Goshen Stone.



# Memorial Stone at Flag Plaza East Entrance

The 12' x 20' Flag Plaza focuses on the Memorial Stone and provides a ceremonial setting that contains benches and seatwall accommodations.

These features may be used for other events as well. Memorial stones are placed in beds of spring bulbs and perennials for seasonal effects and color.



Goshen Center Study

Comments and/or questions on the proposed design and the Re-imagine Goshen Center project can be emailed to:

[Lorrainebrisson@verizon.net](mailto:Lorrainebrisson@verizon.net)

*Thank You!*