

Re-imagine Goshen Center Project Plan

The Open Space Committee and Nicholas Dines, FASLA have collaborated to provide the residents of Goshen with a design for the enhancement of the town center. The following images show the different viewpoints of the design elements.

Mission Statement

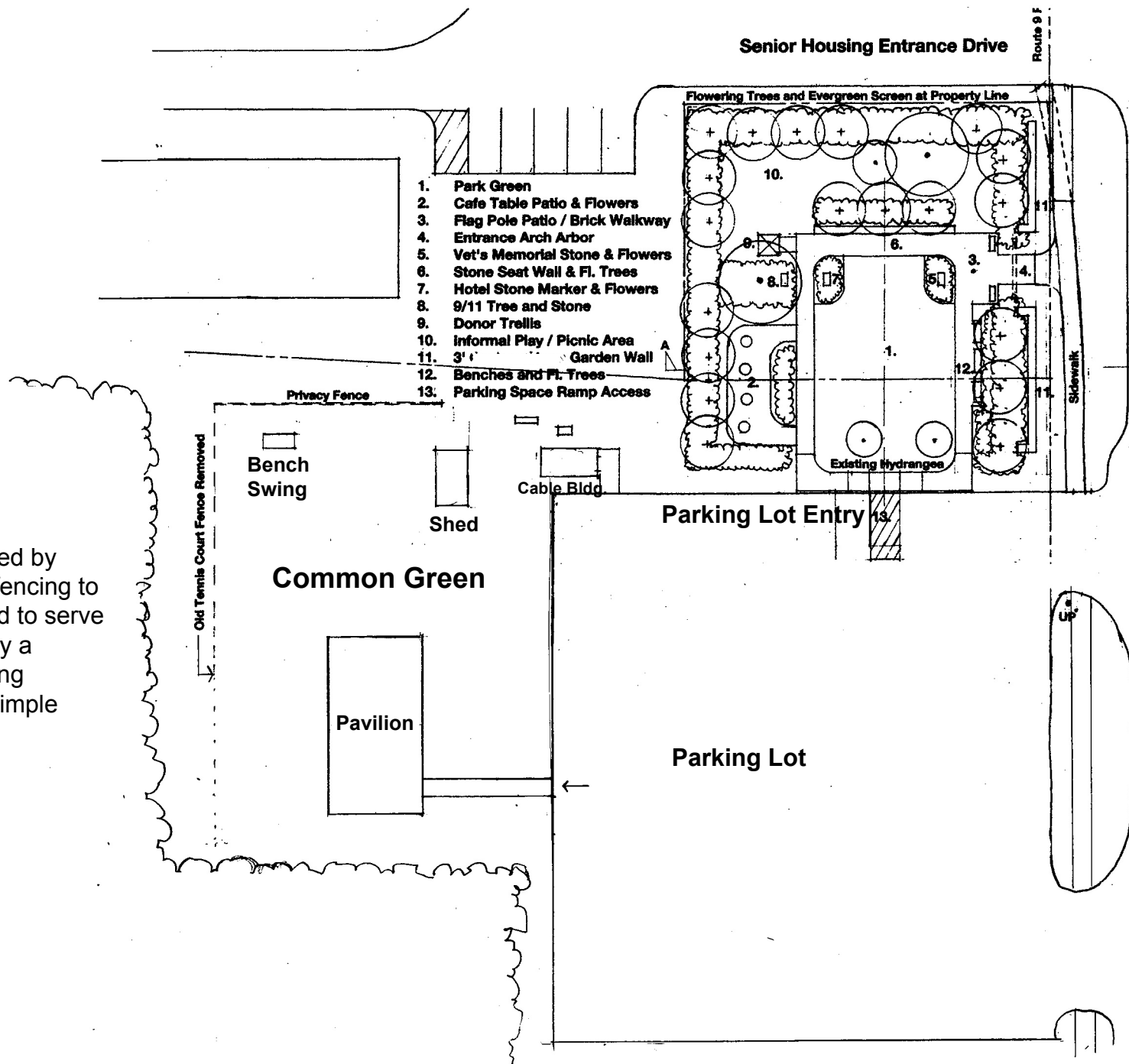
To create a vibrant town center that provides a recreational, cultural, and social gathering place that welcomes people of all ages and abilities. Promote community pride through beautification of our town center. Provide a landscape to encourage physical activity and social gatherings.

Goals

- Redesign the existing park to include design elements such as benches, patio area and plantings.
- Install barriers to Route 9 traffic noise.
- Install ADA compliant walkways and bike rack.
- Replace the tennis court with a town green, pavilion and bench swing.

"Common Green Concept:

The Common Green Space may be created by removing the tennis court pavement and fencing to allow placement of top soil and grass seed to serve as a Town gathering space, augmented by a Pavilion at the north end and a bench swing structure at the south end accessible by simple walkways from the parking lot."

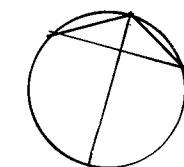


Town Park Concept:

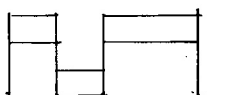
The Town Park concept incorporates the existing memorial and commemorative stones, the flag pole, three existing trees and hydrangea shrubs.

It features an entry from the public sidewalk on the east and from the parking lot to the south. A fully accessible brick path connects the Flag patio, the memorial stones, bench seating, and Cafe' tables that are surrounded by flowering trees and evergreen screening plants. Understory evergreen shrubs screen the north and west boundary lines.

The transition from Route 9 is buffered by a low stone wall for protection from winter snow and salt along the public sidewalk. Flowering trees to allow filtered morning and afternoon light. Perennial flower beds surround Memorial stones and sitting areas.



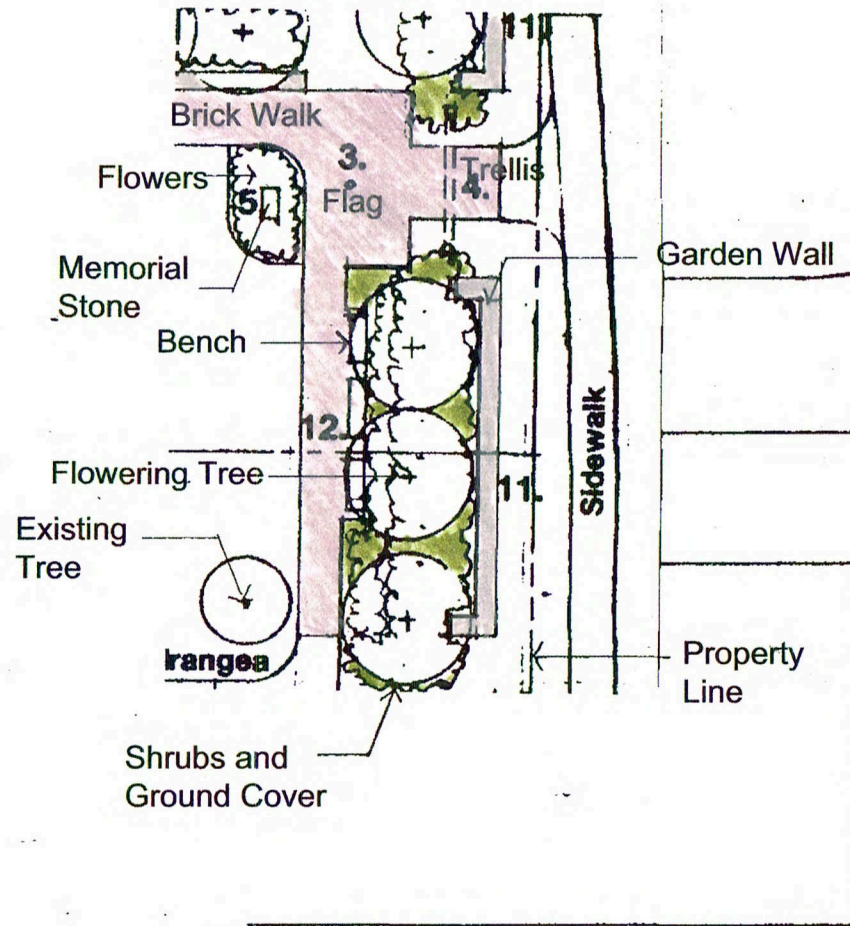
North



0 10 20 40

Re-Imagine Goshen Center
Proposed Park Plan: Concept

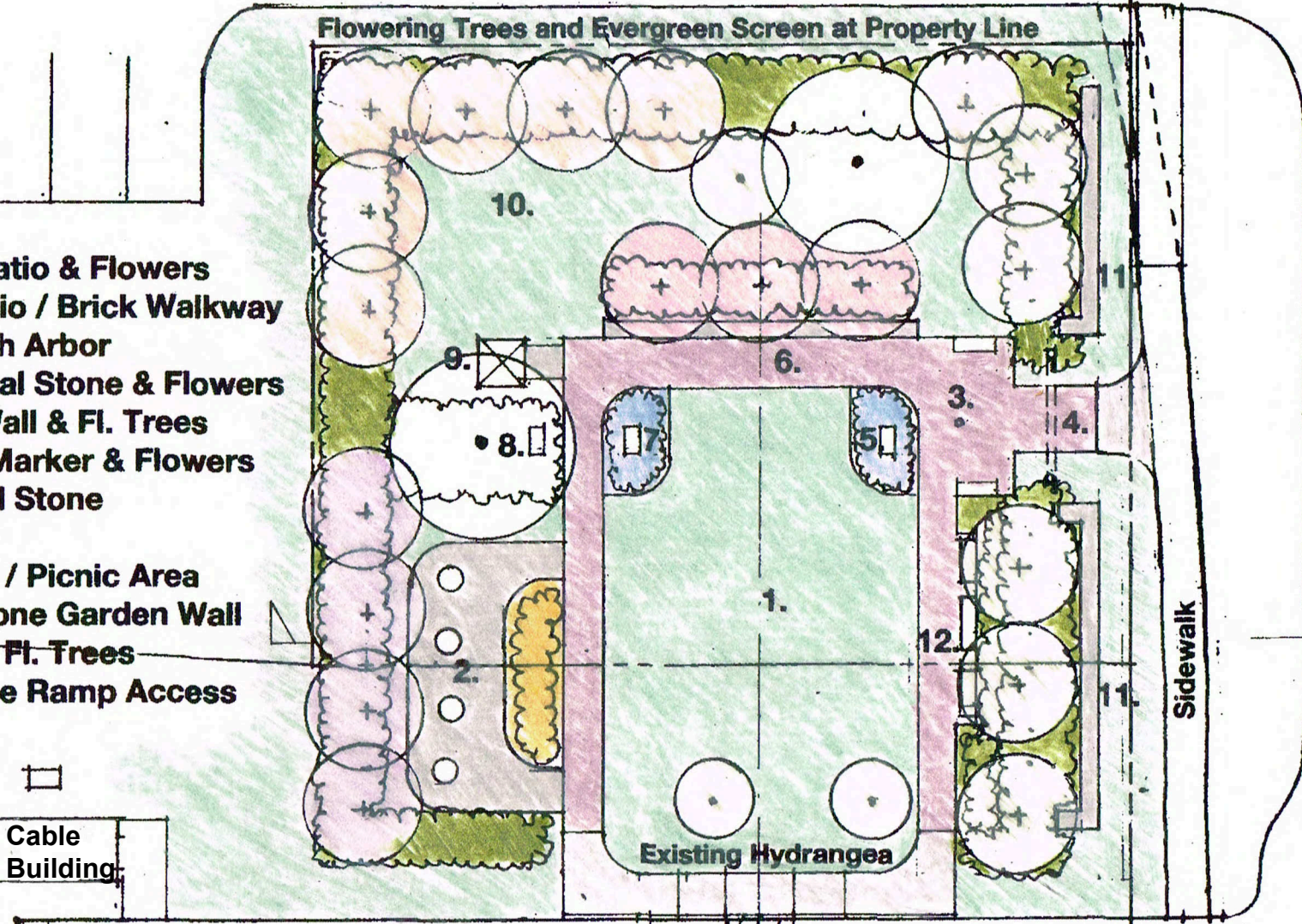
Graphic Key:



1. Park Green
2. Cafe Table Patio & Flowers
3. Flag Pole Patio / Brick Walkway
4. Entrance Arch Arbor
5. Vet's Memorial Stone & Flowers
6. Stone Seat Wall & Fl. Trees
7. Hotel Stone Marker & Flowers
8. 9/11 Tree and Stone
9. Donor Trellis
10. Informal Play / Picnic Area
11. 3' Stone Garden Wall
12. Benches and Fl. Trees
13. Parking Space Ramp Access

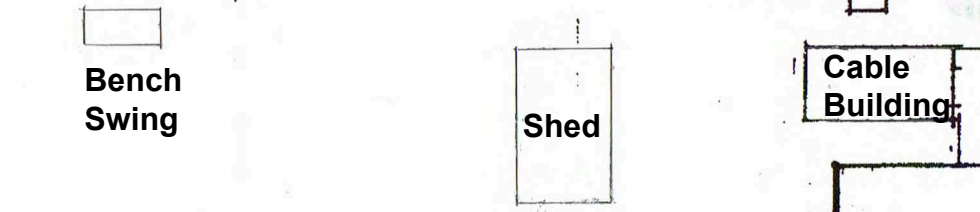
Senior Housing Entrance Drive

Route 9 Right of Way Line



Route 9

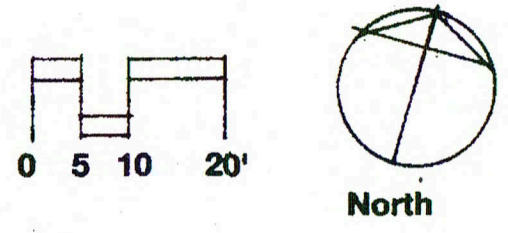
Old Tennis Court Fence Removed



Existing Parking Lot

Existing Hydrangea

Re-Imagine Goshen Center: Proposed Park Plan



UP

Site Section and Detail Studies: Option A

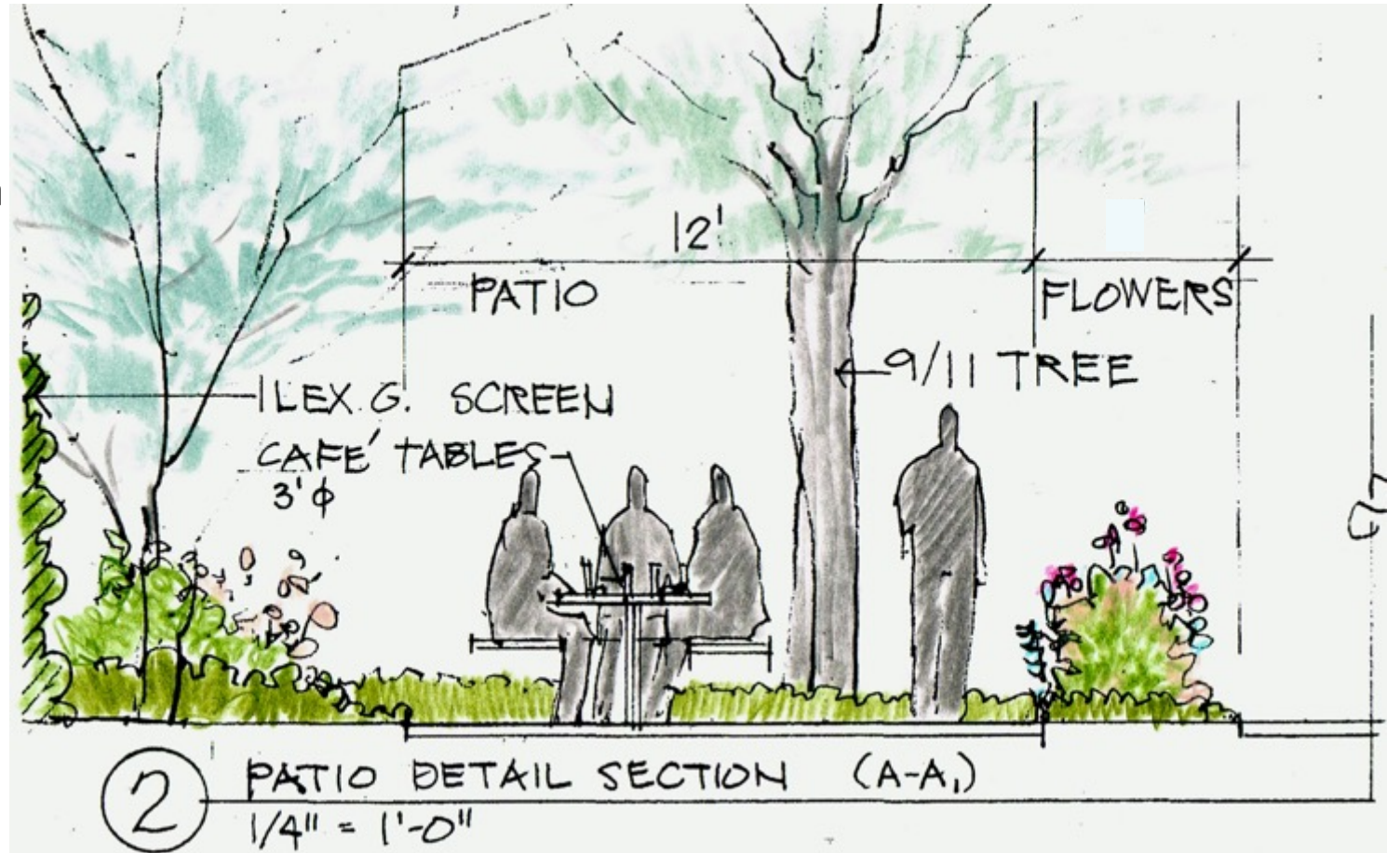


The Park Green is flanked by walkways to meet ADA accessibility requirements to access benches, café tables, the swing and the Ceremonial Flag Plaza. The park is ringed with several species of flowering small to medium sized trees and evergreen screens on the boundary lines.

Café Table Patio at Park Green West Edge

The 12' x 32' Café Table Patio is shaded from western sun with flowering trees and separated from the park green by a perennial flower bed containing echinacea, liatris, nepeta, and other pollinator friendly species.

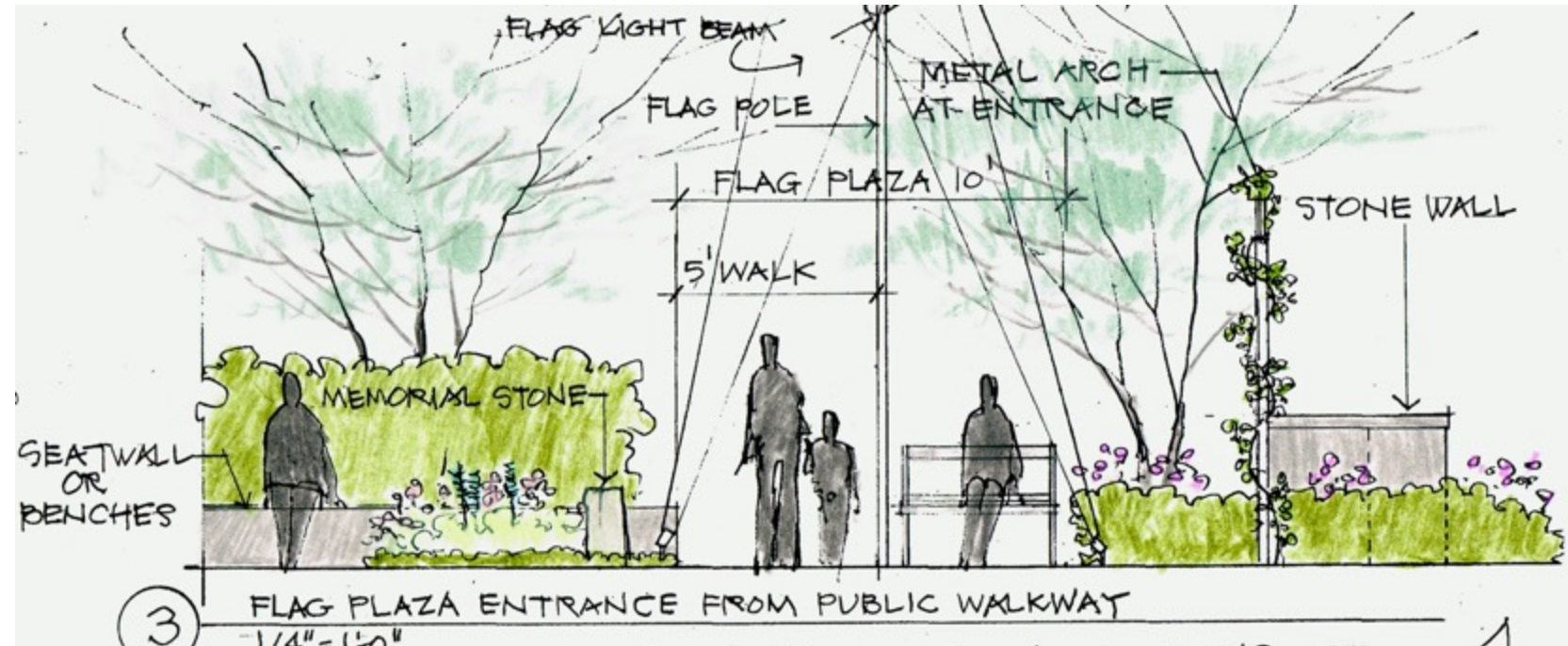
The patio is paved with large sized Goshen Stone.



Memorial Stone at Flag Plaza East Entrance

The 12' x 20' Flag Plaza focuses on the Memorial Stone and provides a ceremonial setting that contains benches and seat-wall accommodations.

These features may be used for other events as well. Memorial stones are placed in beds of spring bulbs and perennials for seasonal effects and color.



Goshen Center Study

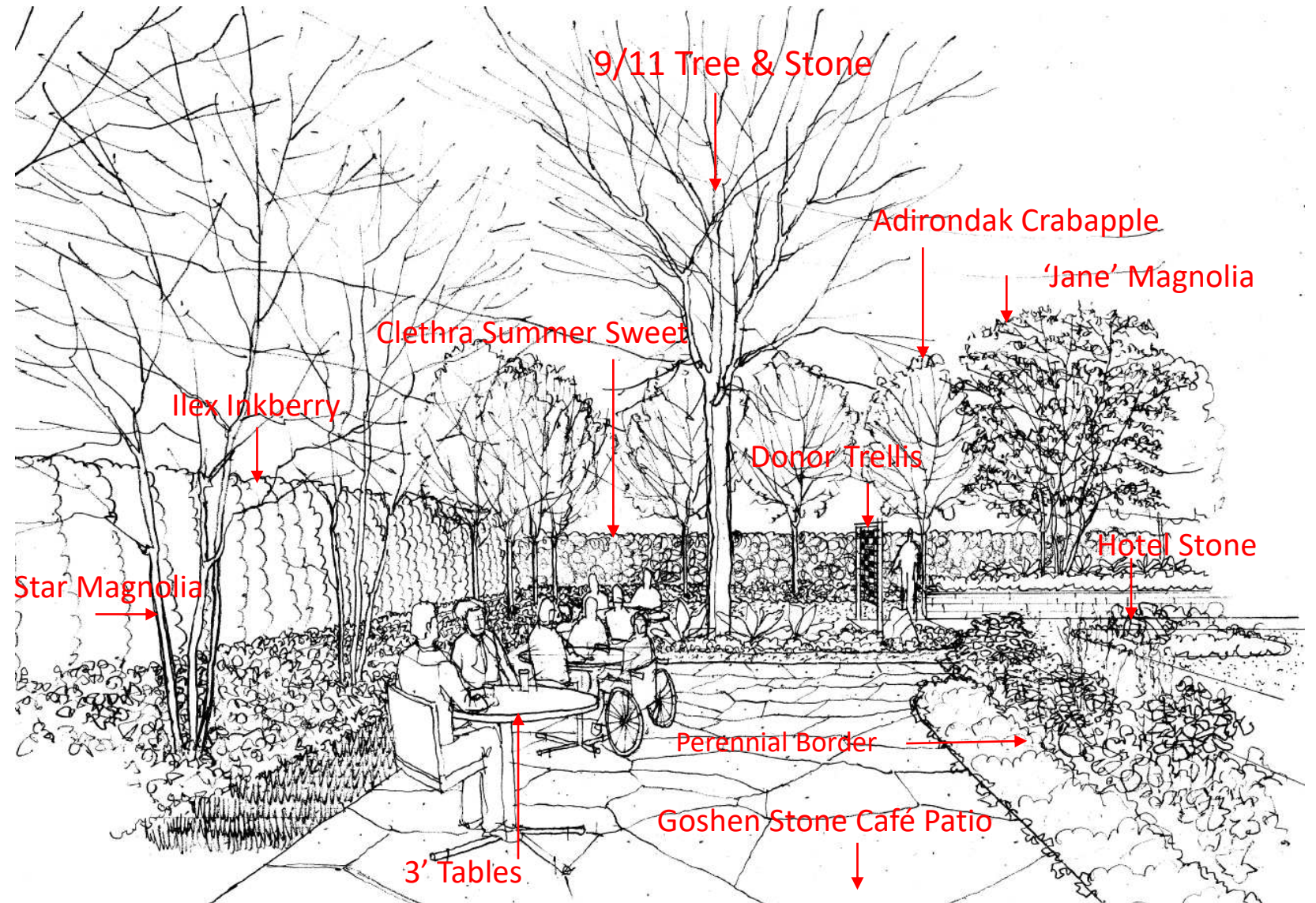
View of Café Table Patio at West Garden Edge

The Café Table Patio is shaded from the western sun by Star Magnolias and screened by a native Holly hedge.

It is accessible from the brick walk and is adjacent to the 9/11 Tree and Stone as well as the Donor Trellis.

The patio is surrounded by ground cover under the trees, and perennial flowers that separate the patio from the walkway.

The plants provide fragrance and color from early spring to late summer.



View of Vet's Stone Garden at Flag Patio


Northeast corner of the Park showing the Entrance Arch connecting Route 9 walkway and the Flag Patio.

Benches view the Park Green, buffered by a perimeter Goshen Stone Garden Wall, flowering trees, shrubs and perennials along the brick walkway that connects to the Parking Lot.

The Stone Seat Wall allows ceremonial seating under Magnolia trees.

The North boundary line shows a fragrant flowering hedge and upright crabapple trees.





Comments and/or questions on the
Re-Imagine Goshen Center Project Plan can
be emailed to:

reimaginegoshen01032@gmail.com

Thank You!

