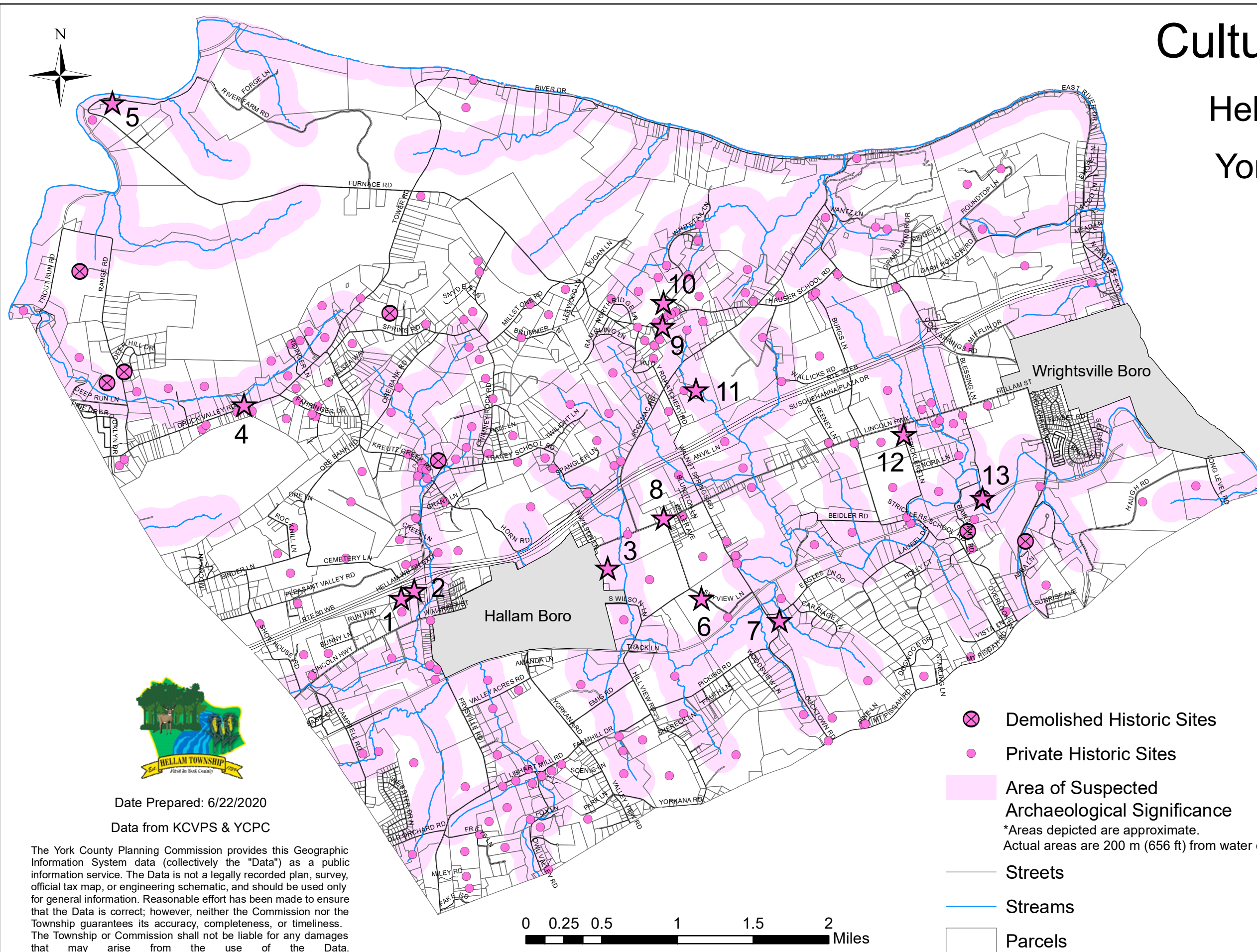


Cultural Features

Hellam Township
York County, PA

Exhibit F



- ★ Public Historic Sites
- 1 - Kreutz Creek Presbyterian Church
c. 1860
- 2 - Kreutz Creek Cemetery
Late 1700's to Mid 1800's
- 3 - Rudy Cemetery
Mid 1800's to Early 1900's
- 4 - United Brethren in Christ Church
and Druck Valley School
c. 1884
- 5 - Codorus Furnace
c. 1765
- 6 - Dietz Cemetery
Early 1800's to Early 1900's
- 7 - Strickler School House
c. 1870
- 8 - Rudy Schoolhouse
c. 1839
- 9 - Highmount Cemetery
Mid 1800's
- 10 - Pine Swamp Cemetery
Mid to Late 1800's
- 11 - Forry Cemetery
Mid to Late 1800's
- 12 - Strickler Cemetery
Mid 1800's
- 13 - Bair's Mill
c. 1878

⊗ Demolished Historic Sites

● Private Historic Sites

Area of Suspected
Archaeological Significance
*Areas depicted are approximate.
Actual areas are 200 m (656 ft) from water edge.

— Streets

— Streams

▭ Parcels



Date Prepared: 6/22/2020

Data from KCVPS & YCPC

The York County Planning Commission provides this Geographic Information System data (collectively the "Data") as a public information service. The Data is not a legally recorded plan, survey, official tax map, or engineering schematic, and should be used only for general information. Reasonable effort has been made to ensure that the Data is correct; however, neither the Commission nor the Township guarantees its accuracy, completeness, or timeliness. The Township or Commission shall not be liable for any damages that may arise from the use of the Data.

