

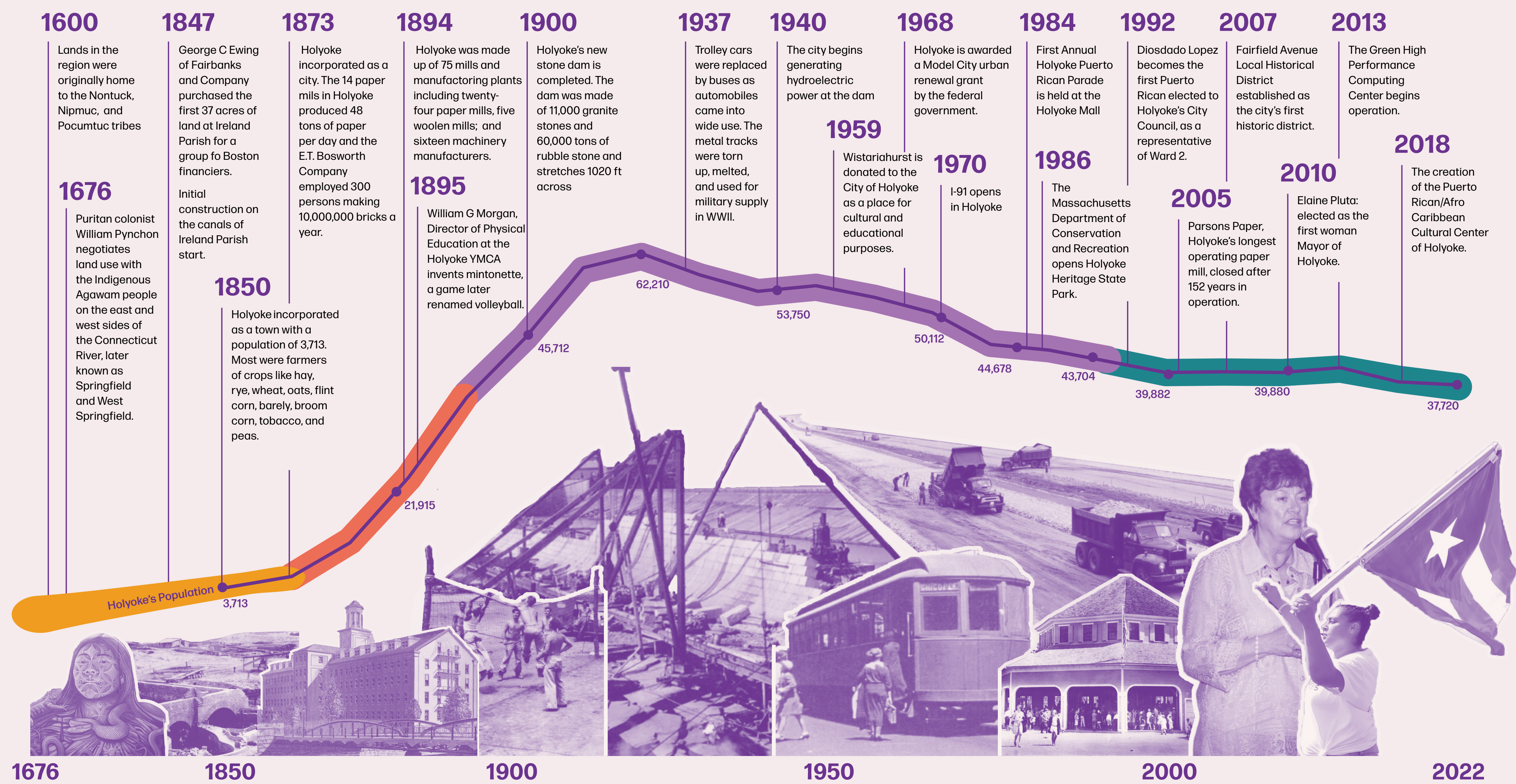
Understanding Holyoke's History

From an Industrial Past to a Green Future

Holyoke's growth has been shaped by its industrial origins, diverse immigrant populations, post-industrial challenges, and efforts toward urban revitalization and innovation. Its historical role as an industrial powerhouse is now being re-imagined with a focus on education, green technology, and cultural inclusion.

Did you know?

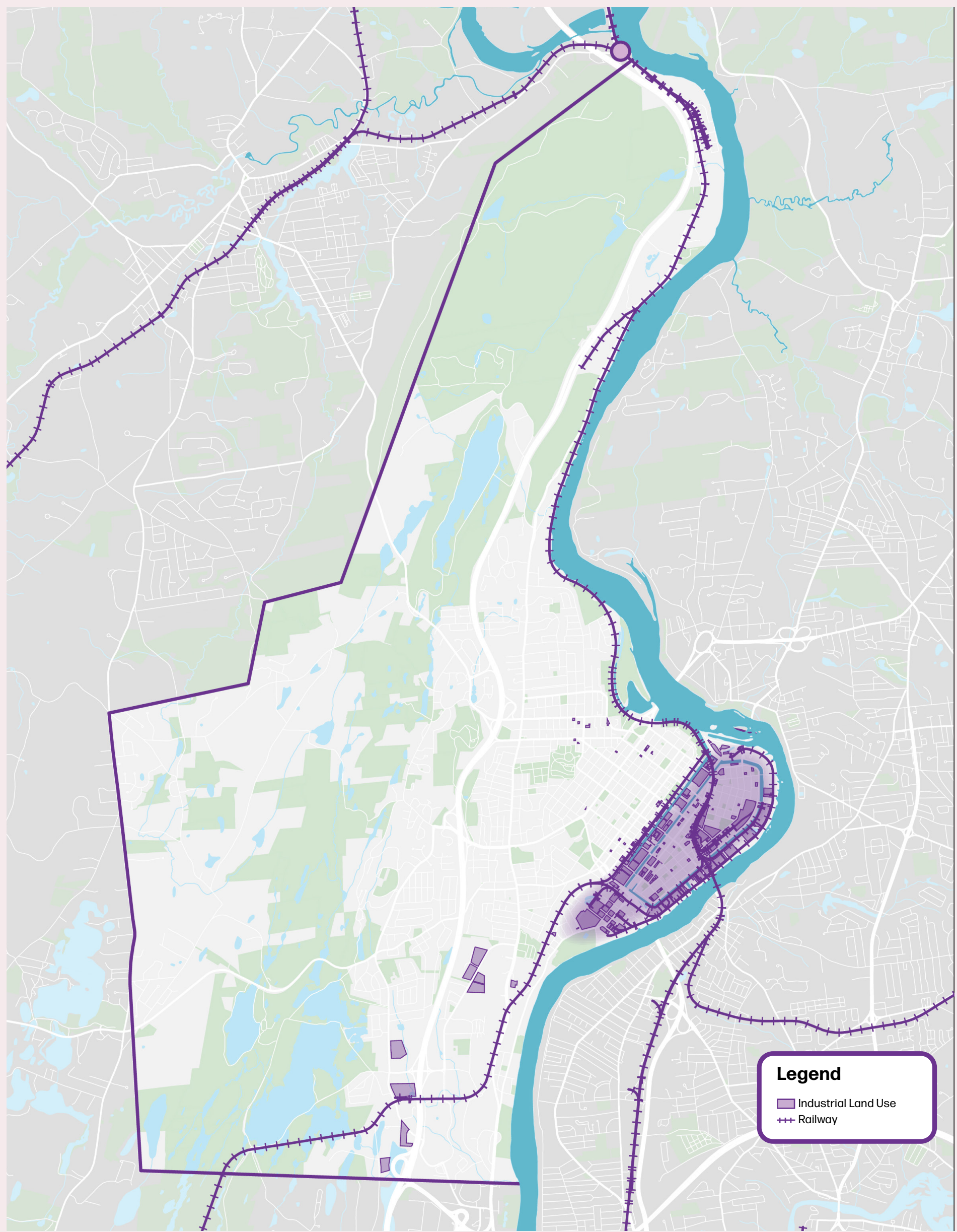
The first inhabitants of Holyoke were, of course, the Native Americans including the Nontuck, Nipmuc, and Pocumtuc.



Holyoke's Rail and Rivers

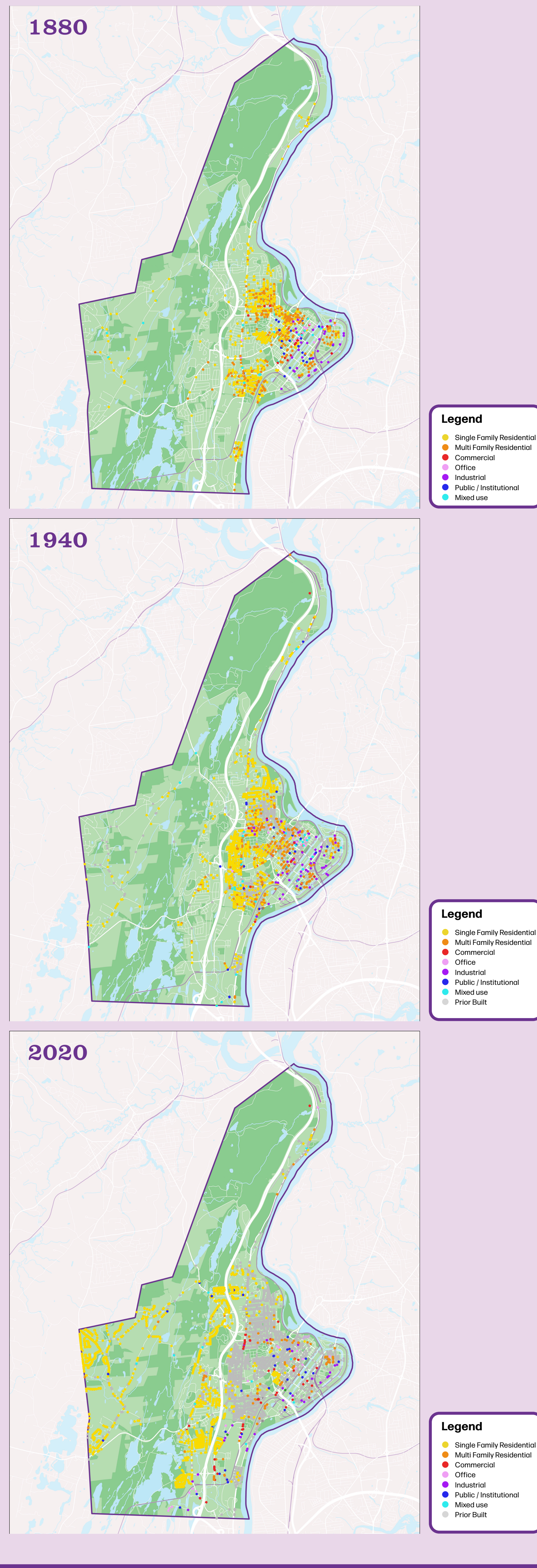
While Holyoke's growth is mostly accredited to the manufacturing mills none of this would be possible without the railroads and rivers that connected Holyoke to the rest of the region and provided affordable hydroelectric power to the mills in the city by way of the canals.

Today the Holyoke Dam contains two hydroelectric generating wheels with a total installed capacity of approximately 33 megawatts.



City Development & Growth

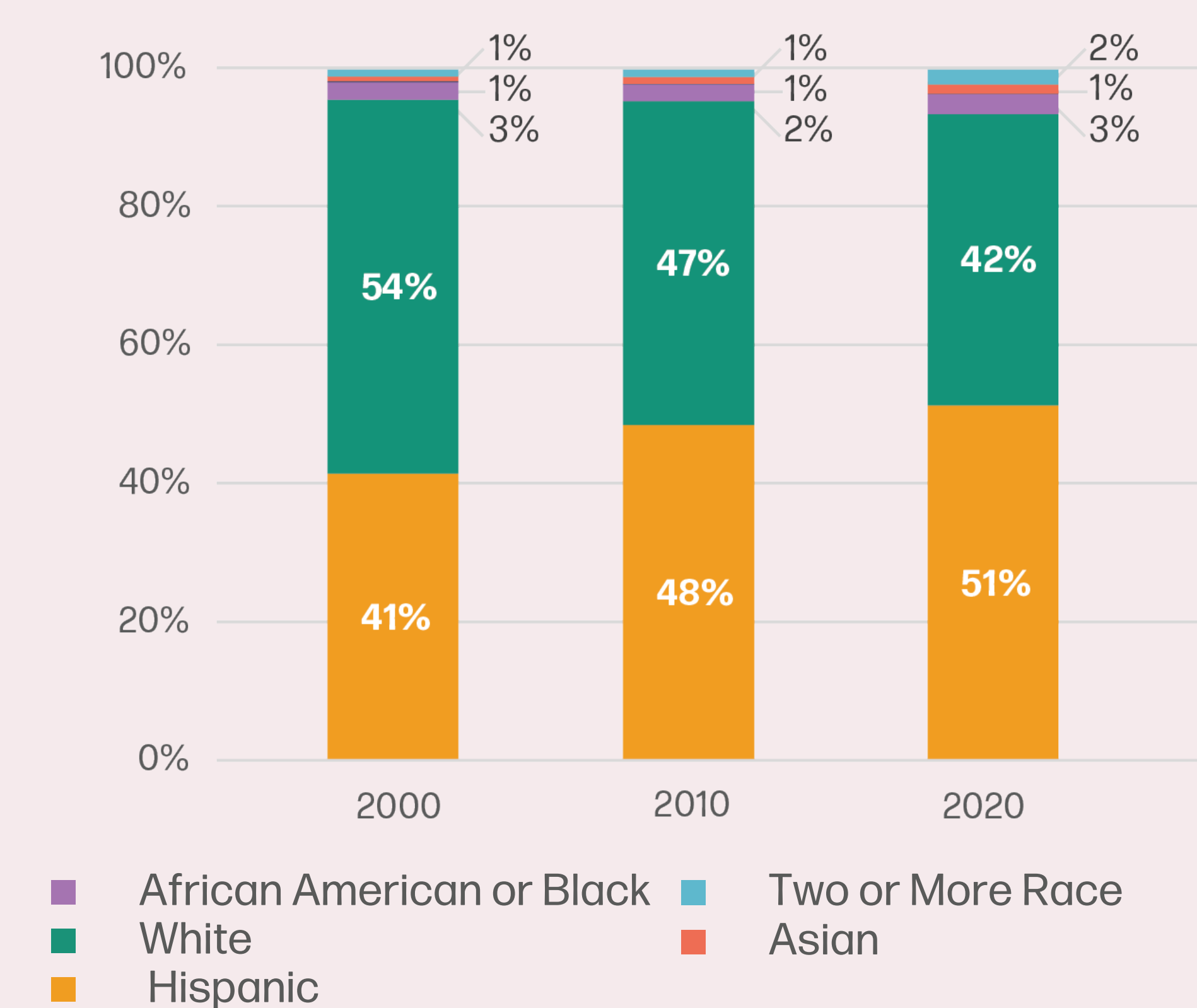
While some of the city's neighborhoods, like Oakdale were created by individual developers as streetcar suburbs for mill workers in the 19th century, others like Rock Valley and Elmwood were existing rural villages that predate the city's incorporation.



Did you know?

Despite being deemed eligible by the Massachusetts Historical Commission as of 2024, no mill properties in the city had been listed on the National Register of Historic Places.

Race and Ethnicity Over Time



Place of Opportunity

Industrial expansion attracted large waves of immigrants, particularly Irish, French-Canadian, and later Polish and German workers. These groups helped build and work in the mills, shaping the city's culture and identity. With the decline of industrial economies, many of these ethnic groups would leave for larger cities like Springfield or Boston.

In the latter half of the 20th century, Holyoke saw a significant influx of Puerto Rican residents, especially during the 1950s-1970s.

