



# Middle School Update

August - October 2022

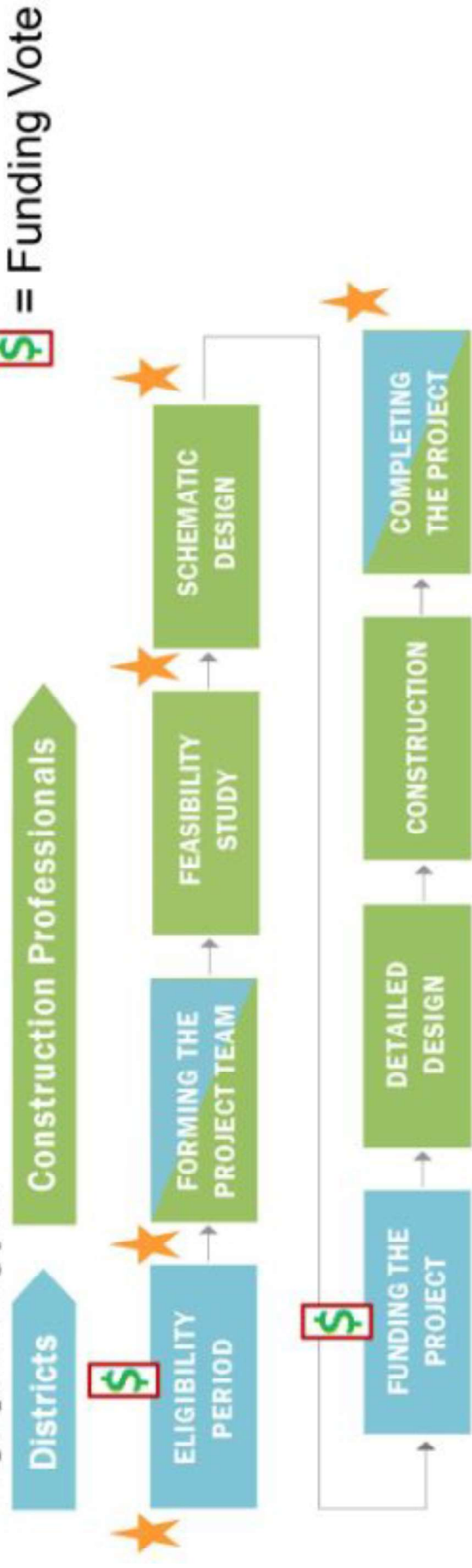


# Middle School Building Update

# MSBA Building Process

## MSBA Building Process

Steps primarily for:



[http://www.massschoolbuildings.org/building/modules\\_overview](http://www.massschoolbuildings.org/building/modules_overview)

# MSBA Module Description

## **Module 1: Eligibility**

**Module 2: Project Team** (procure the services of the Owner’s Project Manager and Designer)

**Module 3: Feasibility** (document the educational program & existing conditions, generate an initial space summary, establish design parameters, evaluate alternatives, and recommend the most cost effective and educationally appropriate preferred solution / submit two reports: a Preliminary Design Program and a Preferred Schematic Report)

**Module 4: Schematic Design** (develop a final design program and robust schematic design of sufficient detail to establish the scope, budget and schedule for the Proposed Project)

**Module 5: Project Scope and Budget and Project Funding Agreements** (establish the project scope, budget, schedule, and MSBA financial participation / after approval by MSBA, enter into a Project Funding Agreement)

**Module 6: Design Development, Construction Documentation, and Bidding** (advance the design, generate construction documentation, procure bids and award a construction contract in accordance with the Project Funding Agreement)

**Module 7: Construction Administration** (MSBA continues to monitor progress of the project to confirm that it remains on track and meets the expectation of both the District and the MSBA as defined in the Project Funding Agreement)

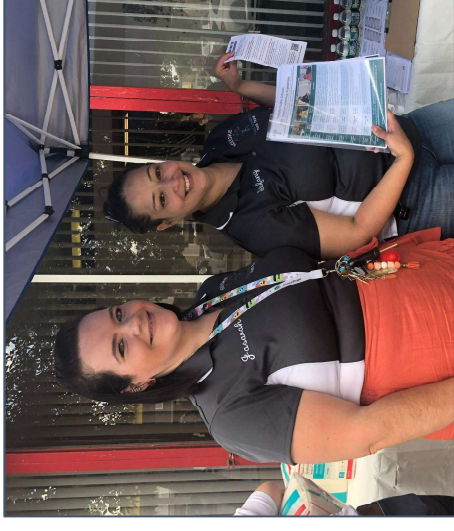
**Module 8: Project Closeout** (MSBA performs final audit to determine final total grant amounts and make final payment)

# Topics discussed at MSBA FAS Meeting on September 14

- Purpose: Vision for the Future
- Background: How we got here
- Moving Forward: How decisions will be made
- Big Decision: Which buildings will be middle schools?
- Three Scenarios
- Discussion

# Shared Outreach Efforts since 2020

- School Building Committee (SBC) meetings (11)
- School Committee (SC) meetings (7)
- City Council (CC) Full or Subcommittee meetings (6)
- Joint Committee meetings of SC and CC (4)
- Peck School Building Tour to SBC & CC (2)
- Moving Forward Community Meetings (3)
- Middle Grades Study Team (MCST) Meetings (5)
- MGST Empathy Interviews (30+)
- Middle Grades Study Team Presentations (12)
- Rezoning Task Force Meetings (3)
- Rezoning Working Group Meetings (8)
- Rezoning Outreach at Community/School Events (40+)
- Surveys (3)
- Videos (2)
- Holyoke Update newsletter
- Website Updates ([Building Project](#), [Rezoning](#))
- Entry Plan Efforts: 1,150+ voices
- Strategic Plan Efforts: 400+ voices



# Proposed Project Schedule

	2022	2023	2024	2025	2026
<b>Option A</b>	3	4	1	2	3
Building Designer Procurement	4	1	2	3	4
Schematic Design	2	3	4	1	2
Votes		Design Development/CD: 15 months			
Bid				Construction: 18 months	
Demo					
<i>Risk is short Schematic Design period: this is where the project cost and funding agreement are set</i>					
<b>Option B</b>	3	4	1	2	3
Building Designer Procurement	4	1	2	3	4
Schematic Design	2	3	4	1	2
Votes		Design Development/CD: 15 months			
Bid				Construction: 15 months	
Demo					
<i>Risk is short construction period: 15 months seems unlikely</i>					
<b>Option C</b>	3	4	1	2	3
Building Designer Procurement	4	1	2	3	4
Schematic Design	2	3	4	1	2
Votes		Design Development/CD: 12 months			
Bid				Construction: 18 months	
Demo					
<i>Risk is short Design Development/CD period: could affect quality of bid documents</i>					

- Reviewed three possible timelines with the School Building Committee
- Will revisit precise timing of City Council vote with the SBC at an upcoming meeting
- Advancing to next stage of model school process with MSBA → Kick-off meeting Today

# Middle School Rezoning



# Agenda

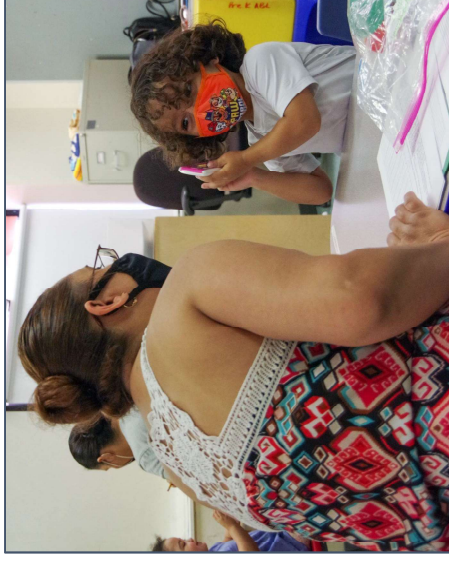
- Purpose: Vision for the Future
- Background: How we got here
- Moving Forward: How decisions will be made
- Big Decision: Which buildings will be middle schools?
- Three Scenarios
- Discussion

# Overview

Holyoke Public Schools will complete the transition to separate elementary (PK-5) and middle (6-8) schools and redraw school boundary lines for fall 2023. This decision was made after many years of soliciting stakeholder input, innovating and planning.

## This plan will:

- **Better prepare students** academically and socially
- Ensure **continuity** for dual language and special education programming
- Be more **equitable**
- Dedicate **more resources to instruction**, not operations



# Agenda

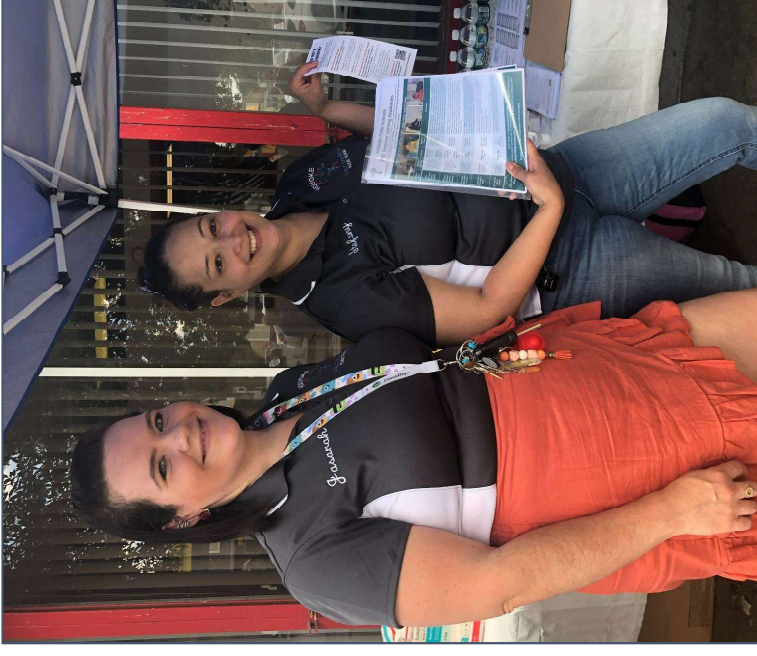
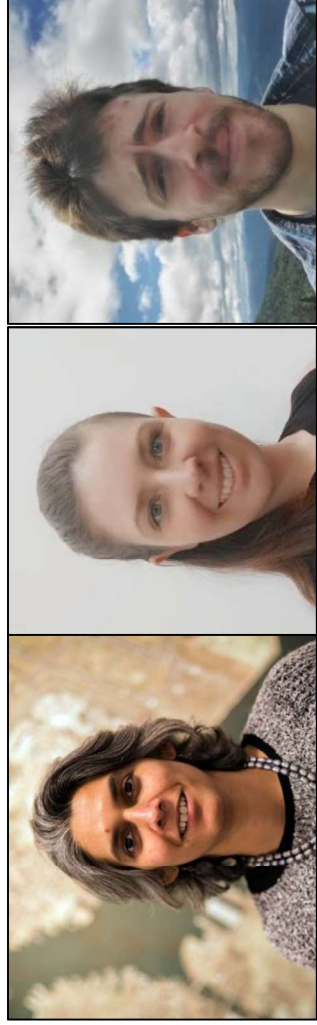
- Purpose: Vision for the Future
- Background: How we got here
- Moving Forward: How decisions will be made
- Big Decision: Which buildings will be middle schools?
- Three Scenarios
- Discussion

# Background Summary

- Many efforts over the past 7 years
  - Trying to build new middle schools
  - Exploring middle school models
  - Growing dual language
  - Determining which grades should be elementary vs. middle
- Teacher teams, leaders, families, students and community members have had significant input in the efforts
  - What's working?
  - What needs to change?
  - What are your hopes for the future?
- To learn more, visit [www.hps.holyoke.ma.us/msredesign](http://www.hps.holyoke.ma.us/msredesign)  
(the videos in the top left corner are especially great!)

# Rezoning Efforts since Spring

- Moving Forward community meetings (3)
- Rezoning Working Group meetings (8)
- Rezoning Task Force meetings (2)
- Video outreach
- Tabling at 40+ community events
- Outreach Consultants
- AppGeo - Technical Consultants



# Agenda

- Purpose: Vision for the Future
- Background: How we got here
- Moving Forward: How decisions will be made
- Big Decision: Which buildings will be middle schools?
- Three Scenarios
- Discussion

# Equity Commitments

- We intentionally build a community that is **anti-racist, inclusive, and culturally responsive**.
- We ensure that students, families, and staff get **the support they need to be successful**.
- We **seek out and incorporate the voices of those impacted**, with a commitment to include those who have been excluded in the past.
- We promote **access and inclusion for all** students, staff, and families.
- We **respect, embrace and honor the diversity** of our students, families, staff, and community.
- We **reflect on our own behavior** to minimize harm to others.
- We create a culture of acceptance and empathy so that **everyone feels valued and is able to contribute** to our community's success.

# Guidelines for Rezoning

## Most Important

- Design schools that put student needs first and prioritize money spent on instruction
- Ensure equitable access to special programs

## Very Important

- Balance student demographics across schools (esp. important in MS)
- Ensure program continuity from elementary to middle school
- Ensure efficient use of space and stable enrollment

## Important

- Ensure safe walking routes
- Have neighborhood schools (esp. important in elem)
- Minimize the impact on families
- Minimize transportation costs

Note: The rezoning task force participated in a workshop to help identify the categories. HPS leadership grouped the workshop results into categories. Then, HPS surveyed 123 stakeholders, in meetings and online.



# Announcement: Two Phases

## Phase 1 (late Oct.)

- Which schools are elementary vs. middle in 2023 and 2026
- The school leader of each in 2023
- The location of dual language programming
- The process for reassignment of impacted staff

## Phase 2 (late Nov.)

- The exact boundary lines
- The location of special education programming
- The process and timing by which any displaced students will be assigned to a specific program (e.g. sub-separate, dual language)
- The appeals process and timing
- The exact date in Dec. when impacted staff will be notified
- List of requested upgrades to designated middle school

# Agenda

- Purpose: Vision for the Future
- Background: How we got here
- Moving Forward: How decisions will be made
- Big Decision: Which buildings will be middle schools?
- Three Scenarios
- Discussion

# Big Decision: Which buildings will be middle schools?

## Which 2 buildings will be middle schools in 2026?

- Building 1: Current/New Peck
- Building 2: Donahue, Kelly, or Sullivan?

### Summary

- Current/New Peck will be determined through City Council & MSBA
- Donahue, Kelly and Sullivan all have the same number of full-sized classrooms and therefore, similar and sufficient capacity

### Major Takeaway

- Each building (Donahue, Kelly, Sullivan) is a reasonable option for Holyoke - similar size, condition and features /// [SEE VIDEO](#)
- More likely to come down to the community's preference on where a second middle school is located

# Agenda

- Purpose: Vision for the Future
  - Background: How we got here
  - Moving Forward: How decisions will be made
  - Big Decision: Which buildings will be middle schools?
- Scenarios
- Discussion

# Scenario Summary

	Donahue Middle Scenario	Kelly Middle Scenario	Sullivan Middle Scenario
# of elementary schools	6	6	6
# of middle schools	2	2	2
# schools w/ PK	5	4	5-6
Dual Language in Elem (all - 4 classes/gr) (½ = 2 DL classes/gr, 1-2 Eng-only/gr)	ENW (all DL) Kelly (½ DL)	ENW (all DL) Morg (½ DL)	ENW (½ DL) Kel (all DL)
Middle Schools (½ DL = ~50% of school has the dual language program)	Donahue Peck (½ DL)	Kel (½ DL) Peck	Sullivan Peck (½ DL)
3-4 homerooms/gr in ES? 6-8 homerooms/gr in MS?	Yes	Yes	Yes
Program continuity from Elem to Middle School?	Almost (except for one sub-separate program from ES to MS)	No 4 of 6 elem feed into both middle schools	Yes
Schools closed	2023: Hol Middle 2023: Peck (temporarily) 2026: STEM, Metcalf	2023: Hol Middle 2023: Peck (temporarily) 2026: STEM, Metcalf	2023: Hol Middle 2023: Peck (temporarily) 2026: STEM, Metcalf

# Scenario Evaluation: Rating System

Weight	Rezoning Guidelines	1	2	3	4
5	Design schools that put student needs first and prioritize money spent on instruction				
5	Ensure equitable access to special programs				
3	Balance student demographics across schools				
3	Ensure program continuity from elementary to middle school				
3	Ensure efficient use of space and stable enrollment	Does not Meet	Partially Meets	Mostly Meets	Fully Meets
1	Ensure safe walking routes				
1	Have neighborhood schools				
1	Minimize the impact on families				
1	Minimize transportation costs				

# Scenario Evaluation: Summary

<2.5 points      2.5-3.4 points      3.5-4 points

Weight	Guidelines	HPS Today	Donahue Middle	Kelly Middle	Sullivan Middle
5	Design schools that put student needs first and prioritize money spent on instruction	1.5	4	4	4
5	Ensure equitable access to special programs	3	3.9	3.8	4
3	Balance student demographics across schools (especially in middle school)	2	2.8	2.6	3
3	Ensure program continuity from elementary to middle school	2	3.5	3.0	4
3	Ensure efficient use of space and stable enrollment	2	4	4	4
1	Ensure safe walking routes	4	4	3.5	4
1	Have neighborhood schools (esp. in elem)	3	3	3.5	3.5
1	Minimize the impact on families	4	1.9	1.9	2
1	Minimize transportation costs (tentative)	3.8	3	4	3
	<b>WEIGHTED AVERAGE</b>	<b>2.4</b>	<b>3.6</b>	<b>3.5</b>	<b>3.7</b>

# Scenario Evaluation: Summary

<2.5 points      2.5-3.4 points      3.5-4 points

Weight	Guidelines	Current	Donahue	Kelly	Sullivan Middle
5	De an				4
5	En				4
3	Ba (es				3
3	En to				4
3	En en				4
1	En				4
1	Ha				3.5
1	Mi				2
1	Minimize transportation costs (tentative)	3.8	3	4	3
	<b>WEIGHTED AVERAGE</b>	<b>2.4</b>	<b>3.6</b>	<b>3.5</b>	<b>3.7</b>

## Major Takeaway

We've designed scenarios that are better than the current state and relatively comparable.

There isn't a "wrong" answer. Each scenario could work well for Holyoke.



# Donahue Middle Scenario

## Feeder Pattern and Dual Language (DL) program location

Fall 2023 - Spring 2026	
Elem	Middle
Lawrence	Donahue
Morgan	
Sullivan	
E.N. White (all DL)	Metcalf (most/all DL)
Kelly (partial DL)	Metcalf or STEM*
McMahon	STEM*

**Holyoke Middle~ closes.**

**As we pursue a new Peck, students will be at either STEM or Metcalf.**

- Current Metcalf elementary students move to Kel or ENW

^Trying to build a new Peck school. If funding isn't secured, current Peck will remain and be used

\*Currently co-located with Dean Campus; building returns to being just high school

~Currently co-located at Peck

Fall 2026 & beyond	
Elem	Middle
Lawrence	Donahue
Morgan	
Sullivan	
E.N. White (all DL)	Peck^ (partial DL)
Kelly (partial DL)	
McMahon	

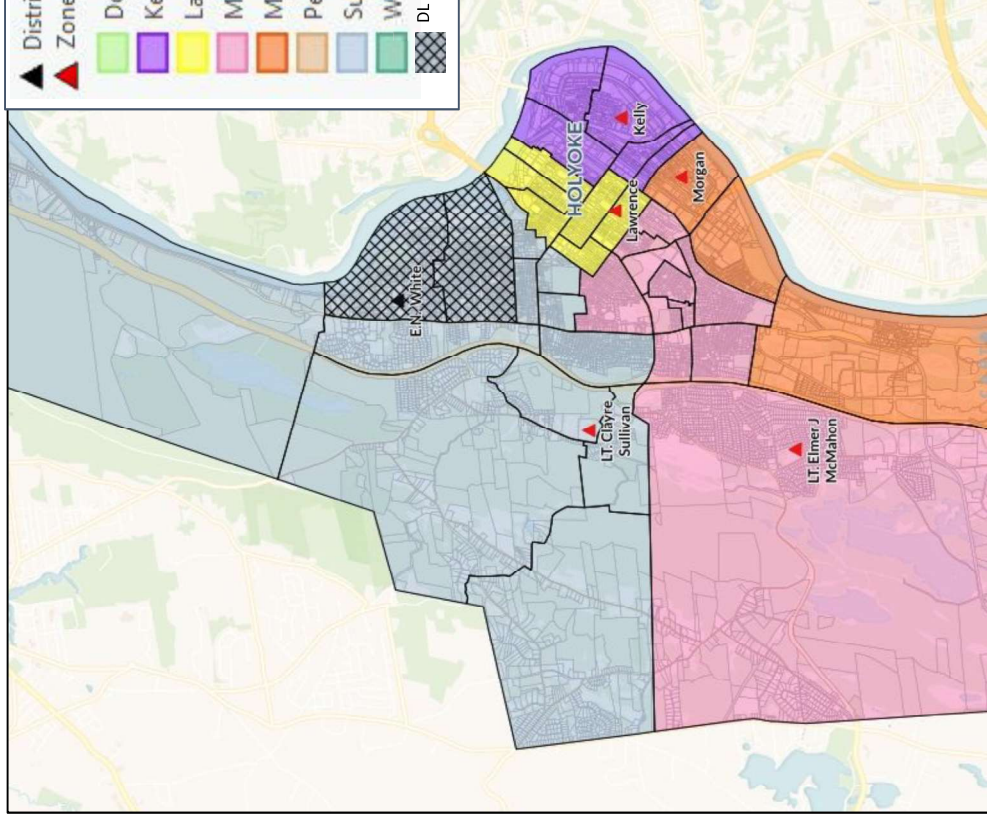
**Holyoke STEM\* & Metcalf students**

**move into Peck.**

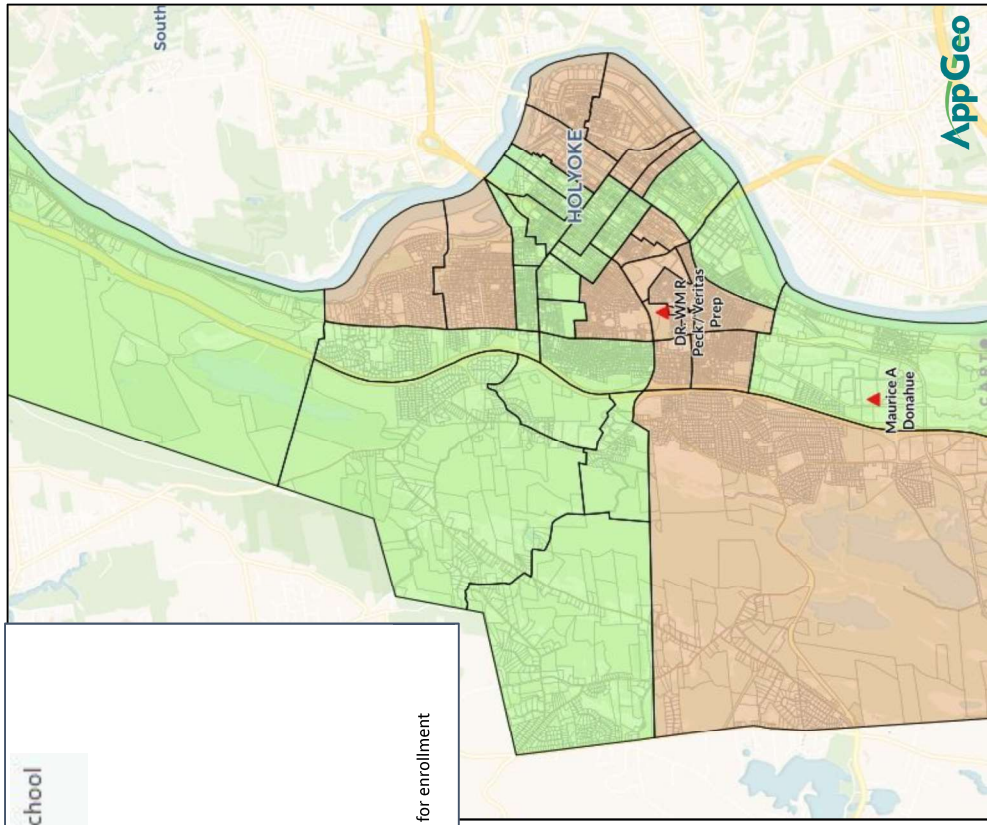
- Metcalf is no longer a school bldg
- Dean Campus returns to be high school only since STEM closes

# DRAFT Donahue Middle Scenario Zone Map (2026)

Elementary School Zones



Middle School Zones



# Kelly Middle Scenario

## Feeder Pattern and Dual Language (DL) program location

Fall 2023 - Spring 2026	
Elem	Middle
E.N. White (all DL)	Kelly (partial DL)
Morgan (partial DL)	Kelly, STEM*, Met
Lawrence	Kelly, STEM*, Met
Sullivan	Kelly, STEM*, Met
McMahon	Kelly, STEM*, Met
Donahue	STEM* or Met

**Holyoke Middle~ closes.**  
**As we pursue a new Peck, students will be at either STEM or Metcalf.**

- Current Metcalf students move to ENW, Morg or Kel; Metcalf if just a typical MS

^Trying to build a new Peck school. If funding isn't secured, current Peck will remain and be used

\*Currently co-located with Dean Campus; building returns to being just high school

~Currently co-located at Peck

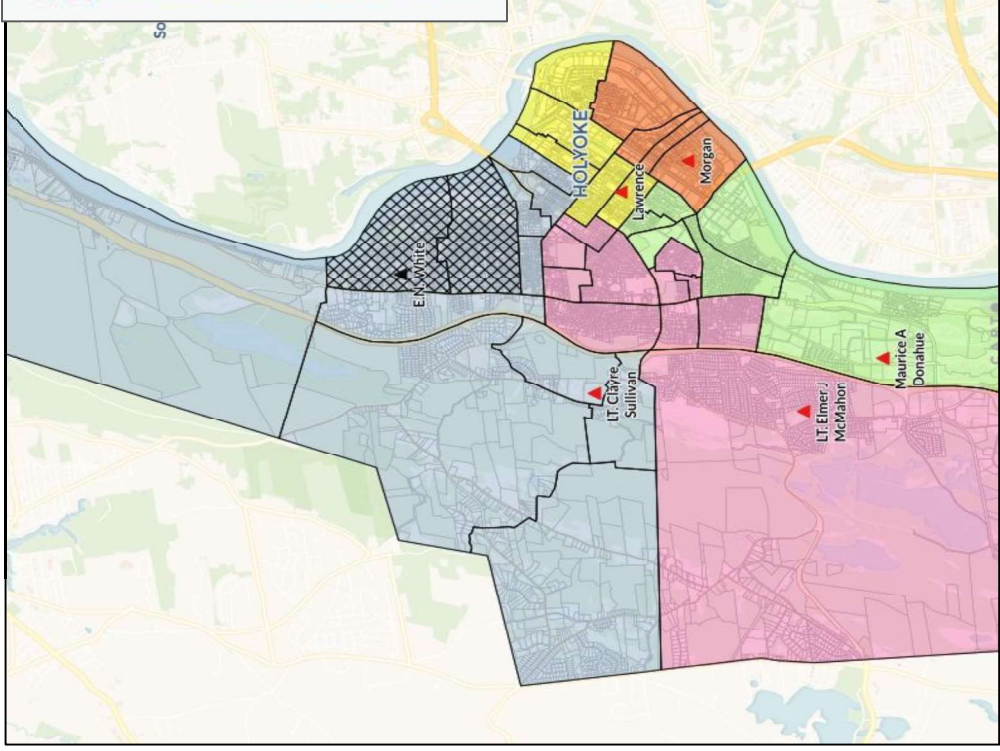
Fall 2026 & beyond	
Elem	Middle
E.N. White (all DL)	Kelly (partial DL)
Morgan (partial DL)	Kelly, Peck^
Lawrence	Kelly, Peck^
Sullivan	Kelly, Peck^
McMahon	Kelly, Peck^
Donahue	Peck^

**Holyoke STEM\* & Metcalf students move into Peck.**

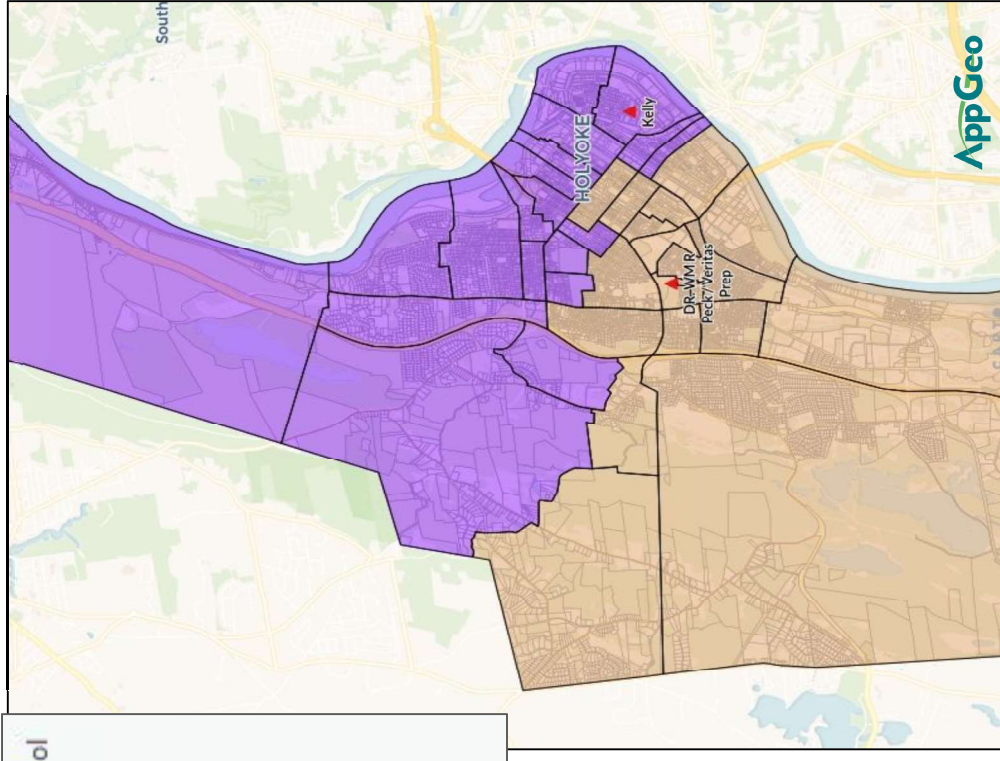
- Metcalf is no longer a school bldg
- Dean Campus returns to be high school only since STEM closes

# DRAFT Kelly Middle Scenario Zone Map (2026)

Elementary School Zones



Middle School Zones



▲ District-wide DL School  
 ▲ Zoned School

Green	Donahue
Purple	Kelly
Yellow	Lawrence
Pink	McMahon
Orange	Morgan
Brown	Peck
Light Blue	Sullivan
Dark Blue	White

# Sullivan Middle Scenario

## Feeder Pattern and Dual Language (DL) program location

Fall 2023 - Spring 2026	
Elem	Middle
Donahue	Sullivan
McMahon	
Morgan	
Lawrence	STEM*
E.N. White (partial DL)	Metcalf or STEM*
Kelly (all DL)	Metcalf (most/all DL)

**Holyoke Middle~ closes.**

**As we pursue a new Peck, students will be at either STEM or Metcalf.**

- Current Metcalf elementary students move to Kel or ENW

^Trying to build a new Peck school. If funding isn't secured, current Peck will remain and be used

\*Currently co-located with Dean Campus; building returns to being just high school

~Currently co-located at Peck

Fall 2026 & beyond	
Elem	Middle
Donahue	Sullivan
McMahon	
Morgan	
Lawrence	Peck^ (partial DL)
E.N. White (partial DL)	
Kelly (all DL)	

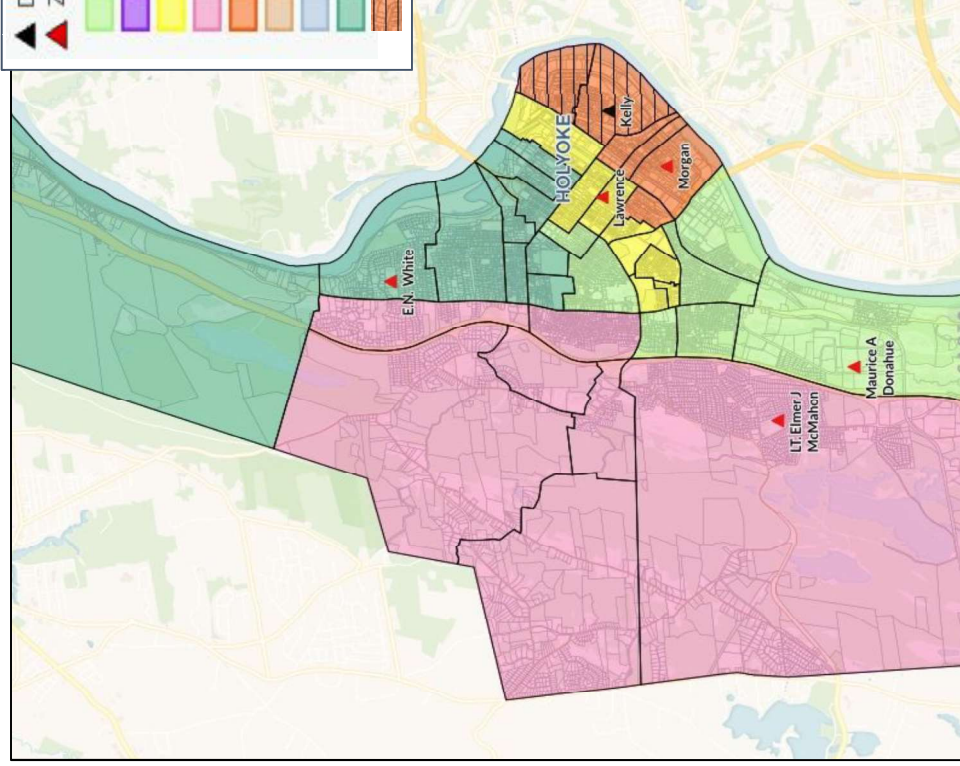
**Holyoke STEM\* & Metcalf students**

**move into Peck.**

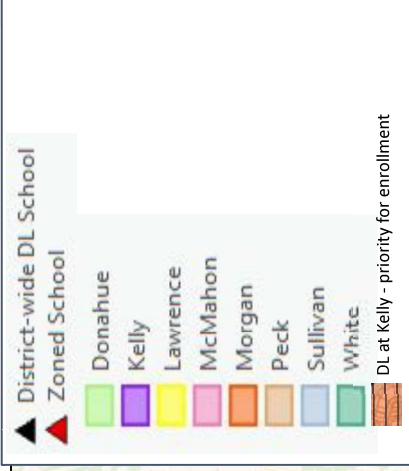
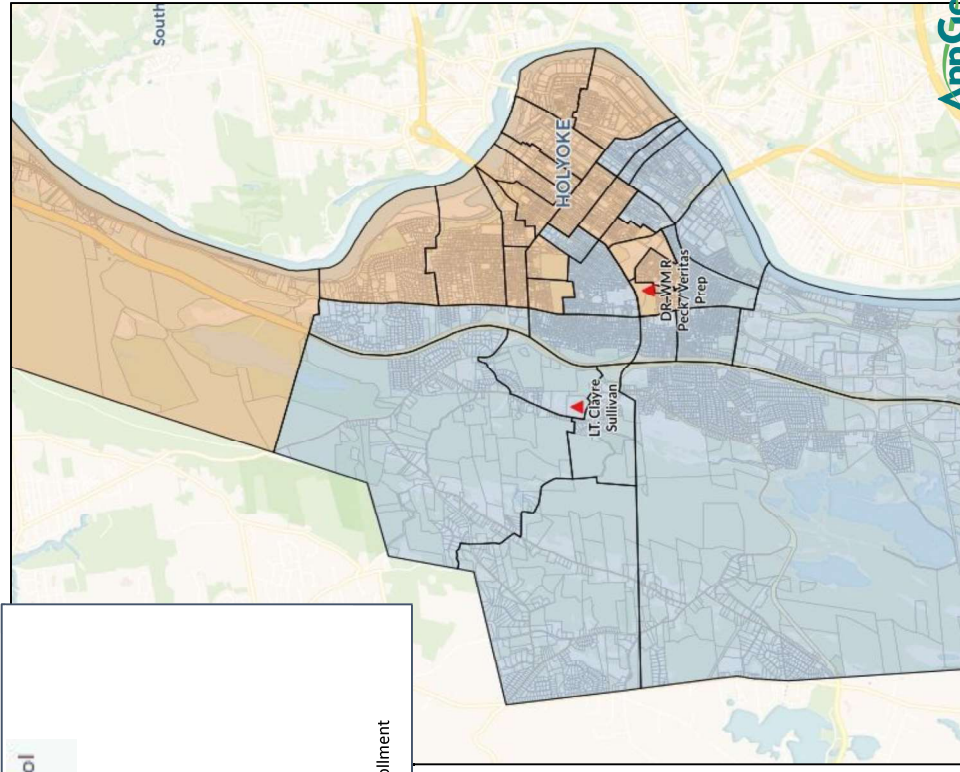
- Metcalf is no longer a school bldg
- Dean Campus returns to be high school only since STEM closes

# DRAFT Sullivan Middle Scenario Zone Map (2026)

Elementary School Zones



Middle School Zones



# Agenda

- Purpose: Vision for the Future
- Background: How we got here
- Moving Forward: How decisions will be made
- Big Decision: Which buildings will be middle schools?
- Three Scenarios
- Discussion

# Discussion

- What questions do you have?
- Which building do you think should be the second middle school and why?
- Which scenario do you like the most and why?
- Which scenario do you like the least and why?

Reminder: Take the [Stakeholder Survey](#) by Oct. 13



# Phase 1 Outreach (August - October)

- Rezoning Task Force (Sept. 12)
- Staff meetings at every elem, middle & PK-8 school (Sept. 12 - 21)
- Family and Community Meetings
  - **Wed, Sept. 14, 5 pm - Kelly**
  - **Wed, Sept. 21, 9 am - Virtual**
  - **Thurs, Sept. 29, 5:30 pm - Holyoke High**
  - **Tues, Oct. 11, 5:30 - Virtual**
- School Committee monthly meetings and October retreat
- Continued community and school-based outreach, especially at back-to-school events and open houses
- [Stakeholder Survey](#) (Aug. 19 - Oct. 13)

Supervised, fun, free activities for children (PK-8) and food at in-person events  
Free buses to Kelly & HHS

# Appendix



# Conversación comunitaria: Cambios de zonificación

agosto a octubre de 2022



# Agenda

- Propósito: Visión del futuro
- Antecedentes: ¿Cómo hemos llegado hasta aquí?
- Avanzar: ¿Cómo se tomarán las decisiones?
- La gran decisión: ¿Qué edificios serán escuelas intermedias?
- Tres escenarios
- Discusión

# Resumen

Las Escuelas Públicas de Holyoke completarán la transición a escuelas elementales (PK-5) y escuelas intermedias (6-8) separadas y redibujarán las líneas limítrofes de las escuelas para el otoño de 2023. Esta decisión se tomó después de muchos años de solicitar la opinión de las partes interesadas, innovar y planificar.

**Este plan permitirá:**

- **Preparar mejor a los estudiantes** académica y socialmente
- Garantizar la **continuidad** de los programas de educación especial y de dos idiomas
- Será más **equitativo**
- **Dedicar más recursos a la enseñanza** y no a las operaciones



# Agenda

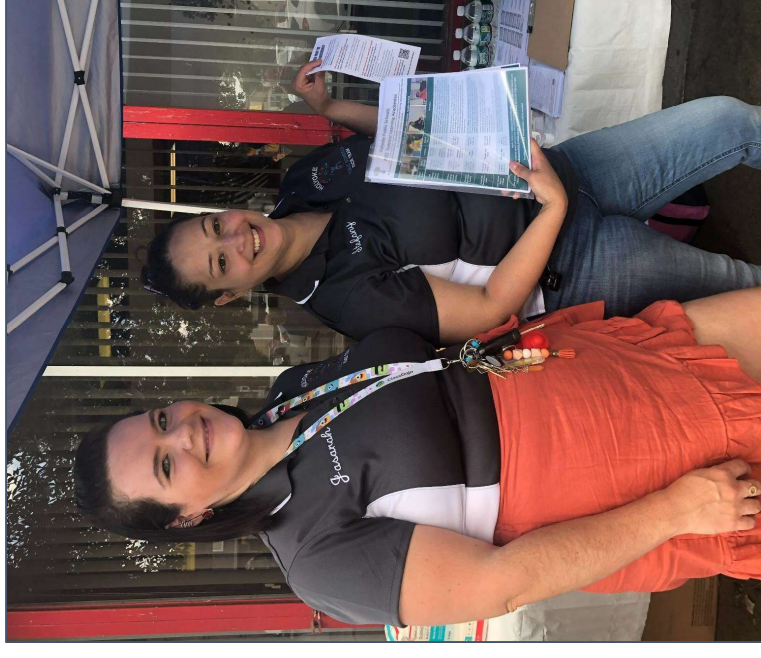
- Objetivo: Visión del futuro
- Antecedentes: ¿Cómo hemos llegado hasta aquí?
- Avanzar: ¿Cómo se tomarán las decisiones?
- La gran decisión: ¿Qué edificios serán escuelas intermedias?
- Tres escenarios
- Discusión

# Resumen de antecedentes

- Muchos esfuerzos en los últimos 7 años
  - Intentar construir nuevas escuelas intermedias
  - Explorando los modelos de escuela intermedia
  - El crecimiento de los dos idiomas
  - Determinar qué grados deben ser elementales o intermedios
- Los equipos de maestros, los líderes, las familias, los estudiantes y los miembros de la comunidad han hecho aportaciones importantes a los esfuerzos
  - ¿Qué es lo que funciona?
  - ¿Qué hay que cambiar?
  - ¿Cuáles son sus esperanzas para el futuro?
- Para aprender más, visite [www.hps.holyoke.ma.us/msredesign](http://www.hps.holyoke.ma.us/msredesign) (¡El vídeo de la esquina superior izquierda es especialmente bueno!)

# Esfuerzos de los cambios de zonificación desde la primavera

- Reuniones comunitarias de Avanzando (3)
- Reuniones del Grupo de Trabajo de Trabajo del cambio de zonificación (8)
- Reuniones del Equipo operativo del cambio de zonificación(2)
- Alcance por vídeo
- Participación con mesa informativa en más de 40 eventos comunitarios
- Consultores de alcance
- AppGeo - Consultores técnicos





# Agenda

- Objetivo: Visión del futuro
- Antecedentes: ¿Cómo hemos llegado hasta aquí?
- Avanzar: ¿Cómo se tomarán las decisiones?
- La gran decisión: ¿Qué edificios serán escuelas intermedias?
- Tres escenarios
- Discusión

# Compromisos de equidad

- Construimos intencionadamente una comunidad **antirracista, inclusiva y culturalmente receptiva**.
- Nos aseguramos de que los estudiantes, las familias y el personal **reciban el apoyo que necesitan para tener éxito**.
- **Buscamos e incorporamos las voces de los afectados**, con el compromiso de incluir a los que han sido excluidos en el pasado.
- Promovemos **el acceso y la inclusión de todos** los estudiantes, el personal y las familias.
- **Respetamos, acogemos y honramos la diversidad** de nuestros estudiantes, familias, personal y comunidad.
- **Reflexionamos sobre nuestro propio comportamiento** para minimizar el daño a los demás.
- Creamos una cultura de aceptación y empatía para que **todos se sientan valorados y puedan contribuir** al éxito de nuestra comunidad.

# Directrices para los Cambios de Zonificación

## Lo más importante

- Diseñar escuelas que den prioridad a las necesidades de los estudiantes y prioricen el dinero destinado a la enseñanza
- Garantizar un acceso equitativo a los programas especiales

## Muy importante

- Equilibrar la demografía de los estudiantes en todas las escuelas (especialmente importante en EM)
- Garantizar la continuidad del programa desde la escuela elemental hasta la escuela intermedia
- Garantizar el uso eficiente del espacio y la estabilidad de las matrículas

# Directrices para los Cambios de Zonificación

## Importante

- Garantizar rutas seguras para los peatones
- Tener escuelas de vecindario (especialmente importante en la elemental)
- Minimizar el impacto a las familias
- Minimizar el costo de transporte

Nota: El grupo de trabajo de los cambios de zonificación participó en un taller para ayudar a identificar las categorías. La dirección de HPS agrupó los resultados del taller en categorías. Luego, HPS encuestó a 123 partes interesadas, en reuniones y en línea.

# Anuncio: Dos fases

## Primera Fase (finales de oct.)

- Cuáles son las escuelas elementales y cuáles las intermedias en 2023 y 2026
- El líder de cada escuela en 2023
- La ubicación de la programación de dos idiomas
- El proceso de reasignación del personal afectado

## Segunda Fase (finales de nov.)

- Las líneas limítrofes exactas
- La ubicación de los programas de educación especial
- El proceso y el calendario por el cual los estudiantes desplazados serán asignados a un programa específico (por ejemplo, subdividido, dos idiomas)
- El proceso de apelación y el calendario
- La fecha exacta en diciembre en que se notificará al personal afectado
- La lista de las mejoras solicitadas para la escuela intermedia designada

# Agenda

- Objetivo: Visión del futuro
- Antecedentes: ¿Cómo hemos llegado hasta aquí?
- Avanzar: ¿Cómo se tomarán las decisiones?
- La gran decisión: ¿Qué edificios serán escuelas intermedias?
- Tres escenarios
- Discusión

# La gran decisión: ¿Qué edificios serán escuelas intermedias?

## ¿Qué 2 edificios serán escuelas intermedias en 2026?

- Edificio 1: Peck actual / nuevo
- Edificio 2: ¿Donahue, Kelly o Sullivan?

### Resumen

- El actual/nuevo Peck se determinará a través del Concejo Municipal y la MSBA
- Donahue, Kelly y Sullivan tienen el mismo número de salones de clases de tamaño completo y, por tanto, una capacidad similar y suficiente

### Lo más importante para llevar

- Cada edificio (Donahue, Kelly, Sullivan) es una opción razonable para Holyoke - tamaño, condición y características similares
- Es más probable que se trate de una preferencia individual sobre la ubicación de una segunda escuela intermedia

# Agenda

- Propósito: Visión del futuro
- Antecedentes: ¿Cómo hemos llegado hasta aquí?
- Avanzar: ¿Cómo se tomarán las decisiones?
- La gran decisión: ¿Qué edificios serán escuelas intermedias?
- Tres escenarios
- Discusión



# Resumen de los escenarios

	Escenario de la intermedia de Donahue	Escenario de la intermedia de Kelly	Escenario de la intermedia de Sullivan
# de escuelas elementales	6	6	6
# de escuelas intermedias	2	2	2
# de escuelas con prekínder	5	4	5-6
Dos idiomas (DI) en elemental (todos - 4 clases/grado) (½ = 2 clases de DI / grados, grados de 1-2 sólo inglés)	ENW (todo DI) Kelly (½ DI)	ENW ((todo DI) Morg (½ (todo DI)	ENW (½ DI) Kel (todo DI)

# Resumen de los escenarios

	Escenario de la intermedia de Donahue	Escenario de la intermedia de Kelly	Escenario de la intermedia de Sullivan
¿3-4 salones hogares / grados en escuela elemental? ¿6-8 salones hogares / grados en escuela intermedia?	Sí	Sí	Sí
¿Continuidad del programa de la escuela elemental a la escuela intermedia?	Casi (a excepción de un programa subdividido de escuela elemental a intermedia)	No 4 de 6 escuelas elementales alimentan a las dos escuelas intermedias	Sí
Escuelas cerradas	2023: Intermedia de Holyoke 2026: STEM, Metcalf	2023: Intermedia de Holyoke 2026: STEM, Metcalf	2023: Intermedia de Holyoke 2026: STEM, Metcalf

# Evaluación de escenarios: Sistema de clasificación

Importancia	Directrices del Cambio de Zonificación	1	2	3	4
5	Diseñar escuelas que den prioridad a las necesidades de los estudiantes y prioricen el dinero destinado a la enseñanza	No cumple	Cumple parcialmente	Cumple en su mayoría	Cumple plenamente
5	Garantizar un acceso equitativo a los programas especiales				
3	Equilibrar la demografía de los estudiantes en las distintas escuelas				
3	Garantizar la continuidad del programa desde la escuela elemental hasta la intermedia				
3	Garantizar el uso eficiente del espacio y la estabilidad de la matrícula				

# Evaluación de escenarios: Sistema de clasificación

Importancia	Directrices del Cambio de Zonificación	1	2	3	4
1	Garantizar rutas seguras para los peatones	No cumple	Cumple parcialmente	Cumple en su mayoría	Cumple totalmente
1	Tener escuelas de vecindario				
1	Minimizar el impacto de las familias				
1	Minimizar los costos de transporte				

# Evaluación de escenarios: Resumen

<2.5 puntos

2.5-3.4 puntos

3.5-4 puntos

Importancia	Directrices	HPS Ahora	Intermedia Donahue	Intermedia Kelly	Intermedia Sullivan
5	Diseñar escuelas que den prioridad a las necesidades de los estudiantes y prioricen el gasto en instrucción	1.5	4	4	4
5	Garantizar un acceso equitativo a los programas especiales	3	3.9	3.8	4
3	Equilibrar la demografía de los estudiantes en todas las escuelas (especialmente en la escuela intermedia)	2	2.8	2.6	3
3	Garantizar la continuidad del programa desde la escuela elemental hasta la escuela intermedia	2	3.5	3.0	4
3	Garantizar el uso eficiente del espacio y la estabilidad de las matrículas	2	4	4	4
1	Garantizar rutas seguras para peatones	4	4	3.5	4
1	Tener escuelas de vecindario (especialmente en elemental)	3	3	3.5	3.5
1	Minimizar el impacto de las familias	4	1.9	1.9	2
1	Minimizar los costos de transporte ( <i>provisional</i> )	3.8	3	4	3
	<b>PROMEDIO PONDERADO</b>	2.4	3.6	3.5	3.7

# Evaluación de escenarios: Resumen

Importancia	Directrices	2.5-3.4 puntos			3.5-4 puntos	
		Actual	Intermedia Donahue	Intermedia Kelly	Intermedia Sullivan	
5	D					4
5	G					4
3	E					3
3	G					4
3	G					4
1	G					4
1	T					3.5
1	N					2
1	Minimizar los costos de transporte	3.8	3	4		3
	<b>PROMEDIO PONDERADO</b>	2.4	3.6	3.5		3.7

## Lo más importante

Hemos diseñado escenarios que son mejores que el estado actual y relativamente comparables.

No hay una respuesta "equivocada". Cada escenario podría funcionar bien para Holyoke.

# Agenda

- Propósito: Visión del futuro
- Antecedentes: Cómo hemos llegado hasta aquí
- Avanzar: ¿Cómo se tomarán las decisiones?
- La gran decisión: ¿Qué edificios serán escuelas intermedias?
- Tres escenarios
- Discusión

# Discusión

- ¿Qué preguntas tiene?
- ¿Qué edificio cree que debería ser la segunda escuela intermedia y por qué?
- ¿Qué escenario le gusta más y por qué?
- ¿Qué escenario le gusta menos y por qué?

Recordatorio: Conteste la encuesta a las partes interesadas antes del 13 de octubre



# Thank you! - ¡Gracias!



# Appendix: Feeder Patterns & Maps

# Donahue Middle Scenario

## Feeder Pattern and Dual Language (DL) program location

Fall 2023 - Spring 2026	
Elem	Middle
Lawrence	Donahue
Morgan	
Sullivan	
E.N. White (all DL)	Metcalf (most/all DL)
Kelly (partial DL)	Metcalf or STEM*
McMahon	STEM*

**Holyoke Middle~ closes.**

**As we pursue a new Peck, students will be at either STEM or Metcalf.**

- Current Metcalf elementary students move to Kel or ENW

^Trying to build a new Peck school. If funding isn't secured, current Peck will remain and be used

\*Currently co-located with Dean Campus; building returns to being just high school

~Currently co-located at Peck

Fall 2026 & beyond	
Elem	Middle
Lawrence	Donahue
Morgan	
Sullivan	
E.N. White (all DL)	Peck^ (partial DL)
Kelly (partial DL)	
McMahon	

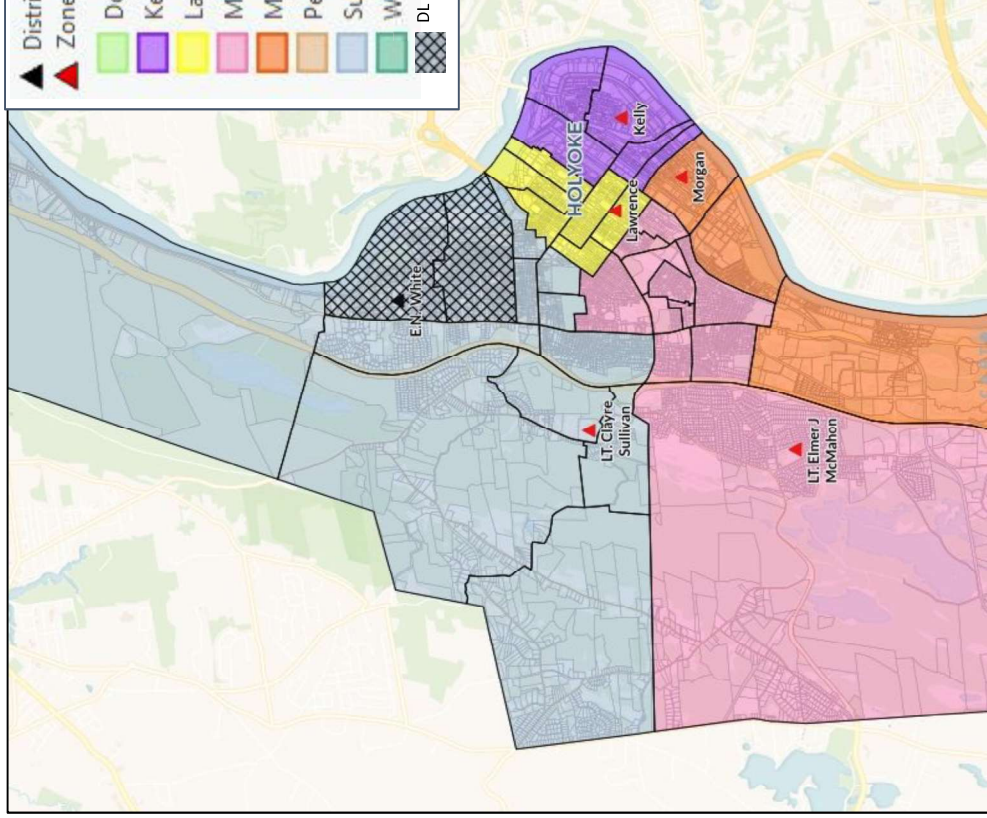
**Holyoke STEM\* & Metcalf students**

**move into Peck.**

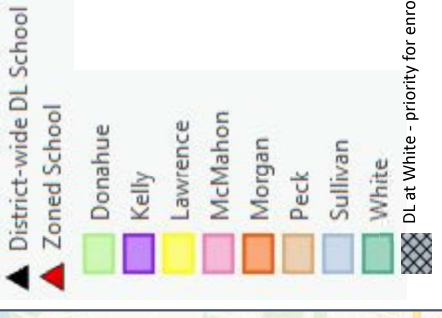
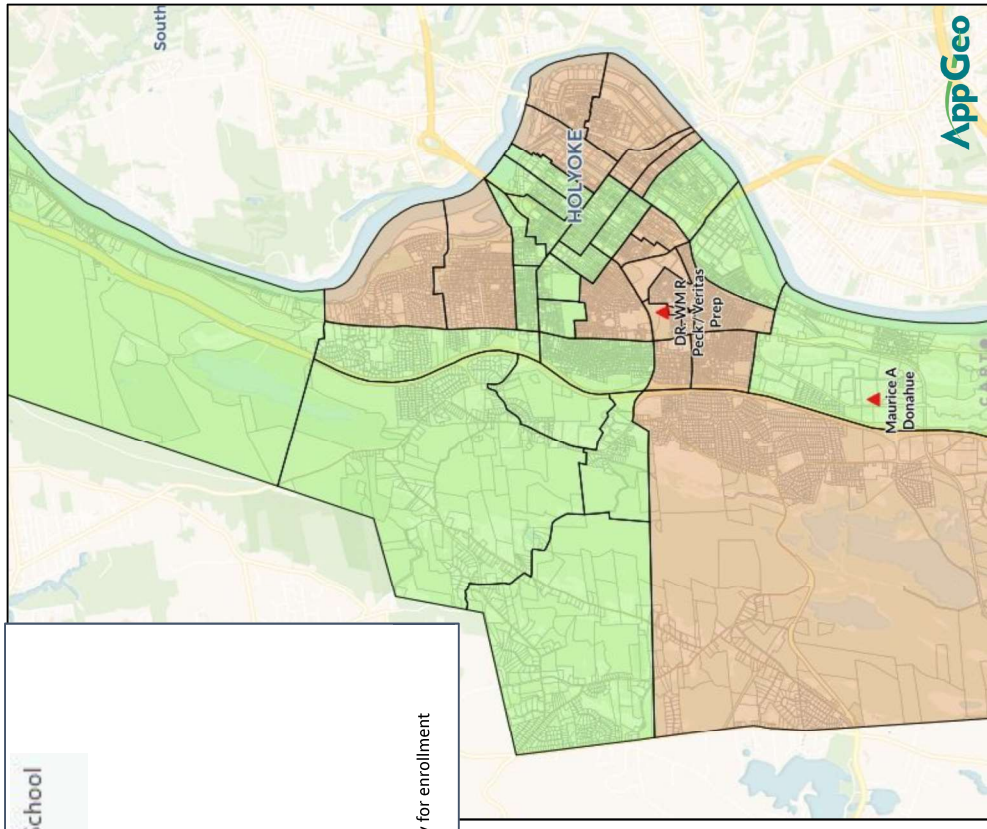
- Metcalf is no longer a school bldg
- Dean Campus returns to be high school only since STEM closes

# DRAFT Donahue Middle Scenario Zone Map (2026)

Elementary School Zones



Middle School Zones



# Kelly Middle Scenario

## Feeder Pattern and Dual Language (DL) program location

Fall 2023 - Spring 2026	
Elem	Middle
E.N. White (all DL)	Kelly (partial DL)
Morgan (partial DL)	Kelly, STEM*, Met
Lawrence	Kelly, STEM*, Met
Sullivan	Kelly, STEM*, Met
McMahon	Kelly, STEM*, Met
Donahue	STEM* or Met

**Holyoke Middle~ closes.**  
**As we pursue a new Peck, students will be at either STEM or Metcalf.**

- Current Metcalf students move to ENW, Morg or Kel; Metcalf if just a typical MS

^Trying to build a new Peck school. If funding isn't secured, current Peck will remain and be used

\*Currently co-located with Dean Campus; building returns to being just high school

~Currently co-located at Peck

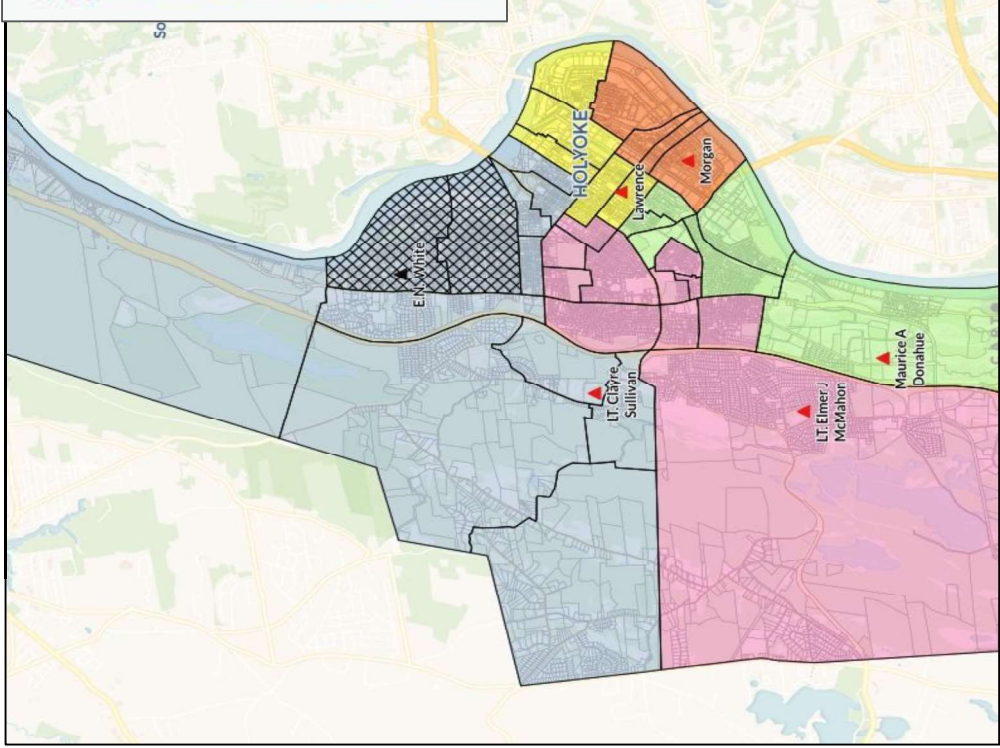
Fall 2026 & beyond	
Elem	Middle
E.N. White (all DL)	Kelly (partial DL)
Morgan (partial DL)	Kelly, Peck^
Lawrence	Kelly, Peck^
Sullivan	Kelly, Peck^
McMahon	Kelly, Peck^
Donahue	Peck^

**Holyoke STEM\* & Metcalf students move into Peck.**

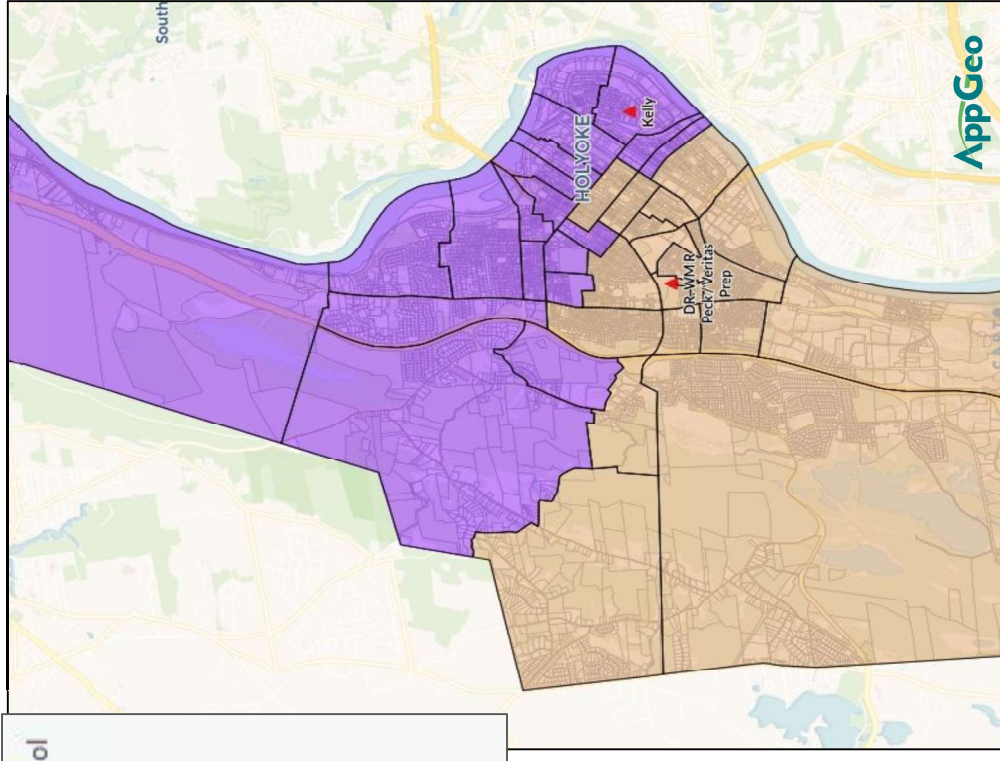
- Metcalf is no longer a school bldg
- Dean Campus returns to be high school only since STEM closes

# DRAFT Kelly Middle Scenario Zone Map (2026)

Elementary School Zones



Middle School Zones



▲ District-wide DL School  
 ▲ Zoned School

Green	Donahue
Purple	Kelly
Yellow	Lawrence
Pink	McMahon
Orange	Morgan
Light Orange	Peck
Light Blue	Sullivan
Dark Blue	White

# Sullivan Middle Scenario

## Feeder Pattern and Dual Language (DL) program location

Fall 2023 - Spring 2026	
Elem	Middle
Donahue	Sullivan
McMahon	
Morgan	
Lawrence	STEM*
E.N. White (partial DL)	Metcalf or STEM*
Kelly (all DL)	Metcalf (most/all DL)

**Holyoke Middle~ closes.**

**As we pursue a new Peck, students will be at either STEM or Metcalf.**

- Current Metcalf elementary students move to Kel or ENW

^Trying to build a new Peck school. If funding isn't secured, current Peck will remain and be used

\*Currently co-located with Dean Campus; building returns to being just high school

~Currently co-located at Peck

Fall 2026 & beyond	
Elem	Middle
Donahue	Sullivan
McMahon	
Morgan	
Lawrence	Peck^ (partial DL)
E.N. White (partial DL)	
Kelly (all DL)	

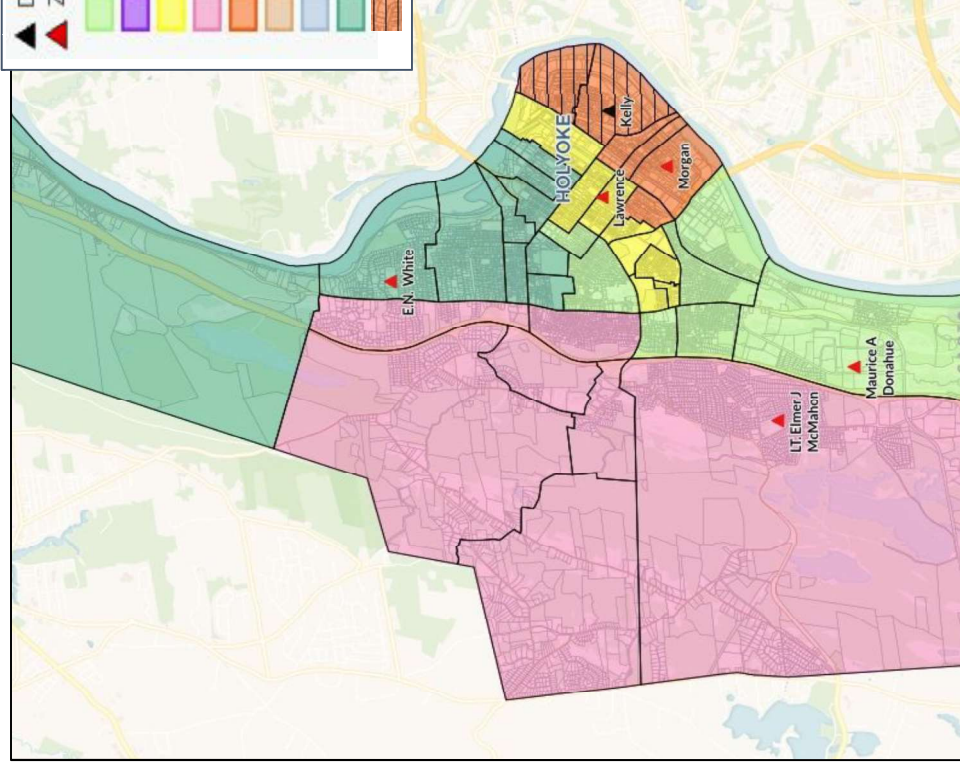
**Holyoke STEM\* & Metcalf students**

**move into Peck.**

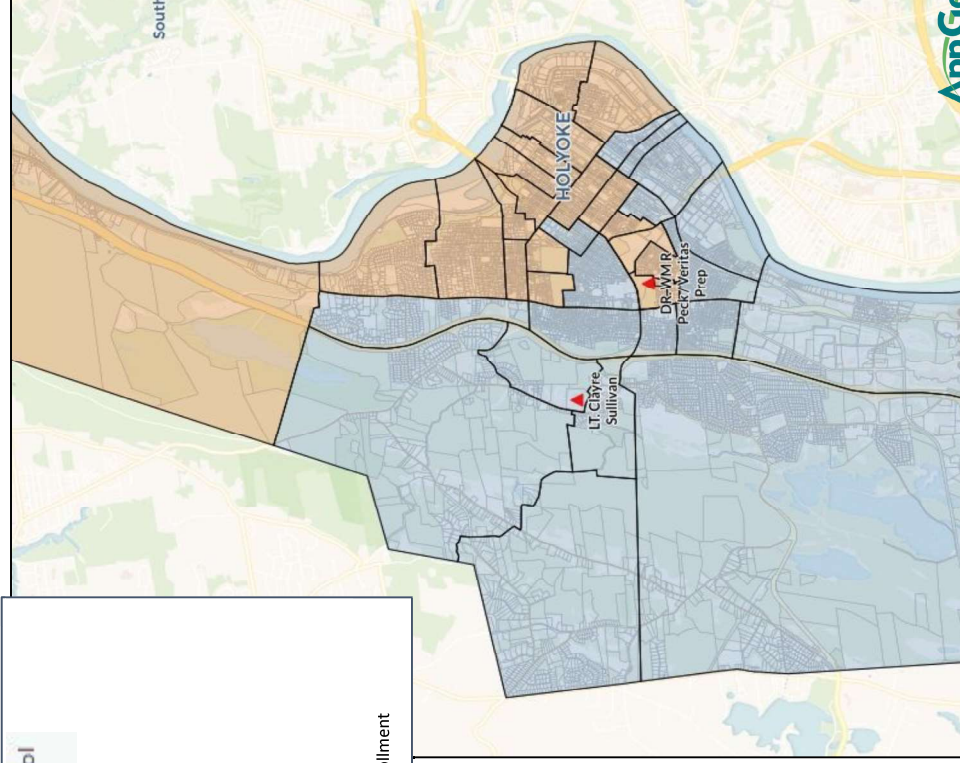
- Metcalf is no longer a school bldg
- Dean Campus returns to be high school only since STEM closes

# DRAFT Sullivan Middle Scenario Zone Map (2026)

Elementary School Zones



Middle School Zones



▲ District-wide DL School  
 ▲ Zoned School

- Donahue
- Kelly
- Lawrence
- McMahon
- Morgan
- Peck
- Sullivan
- White

DL at Kelly - priority for enrollment

