

# MASSACHUSETTS DEPARTMENT OF TRANSPORTATION HIGHWAY DIVISION

PLAN AND PROFILE OF  
MAIN STREET

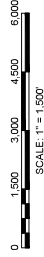
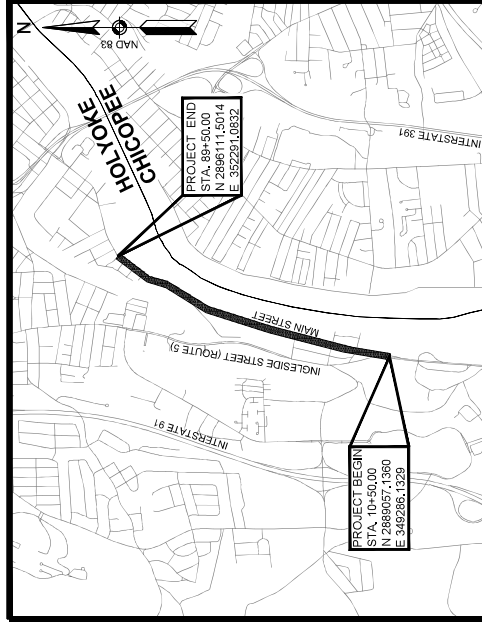
IN THE CITY OF  
HOLYOKE  
HAMPDEN COUNTY

FEDERAL AID PROJECT NO.

## 10% SUBMITTAL

### INDEX

| SHEET NO. | DESCRIPTION            |
|-----------|------------------------|
| 1         | TITLE SHEET            |
| 2         | LEGEND & ABBREVIATIONS |
| 3-4       | KEY PLAN               |
| 5         | TYPICAL SECTIONS       |
| 6-19      | CONSTRUCTION PLANS     |



LENGTH OF PROJECT = 7,900 FEET = 1.496 MILES

|                        |                    |
|------------------------|--------------------|
| HOLYOKE<br>MAIN STREET |                    |
| STATE                  | FED. AID PROJ. NO. |
| MA                     | -                  |
| SHEET NO.              | TOTAL SHEETS       |
| 1                      | 1                  |
| PROJECT FILE NO.       |                    |
| -                      |                    |

THESE PLANS ARE SUPPLEMENTED BY THE OCTOBER 2017 CONSTRUCTION STANDARD DETAILS, AS APPLICABLE, AND THE 2017 CONSTRUCTION STANDARD SPECIFICATIONS FOR HIGHWAYS, BRIDGES, AND STRUCTURES, THE 1988 STANDARD DRAWINGS FOR TRAFFIC SIGNALS AND HIGHWAY LIGHTING, AND SUPPORTS, THE 1988 STANDARD DRAWINGS FOR TRAFFIC SIGNALS AND HIGHWAY LIGHTING, AND THE LATEST EDITION OF THE AMERICAN STANDARD FOR NURSERY STOCK.



|             |            |       |   |
|-------------|------------|-------|---|
| DATE        | 2023-04-28 | REV.# | 0 |
| DESCRIPTION | 10% DESIGN |       |   |

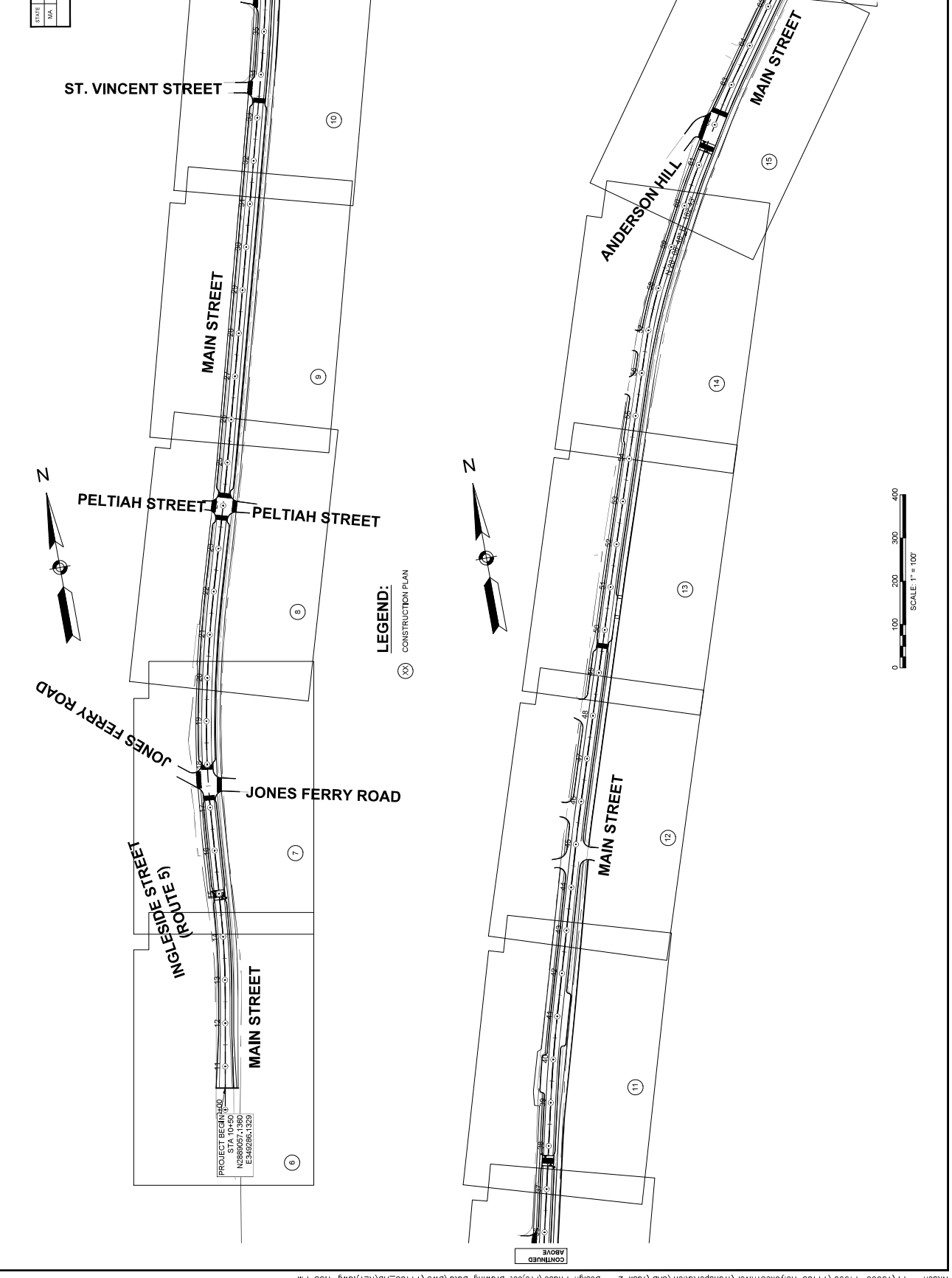


APPROVED  
\_\_\_\_\_  
CHIEF ENGINEER  
\_\_\_\_\_  
DATE



**HOLYOKE  
MAIN STREET  
KEY PLAN**

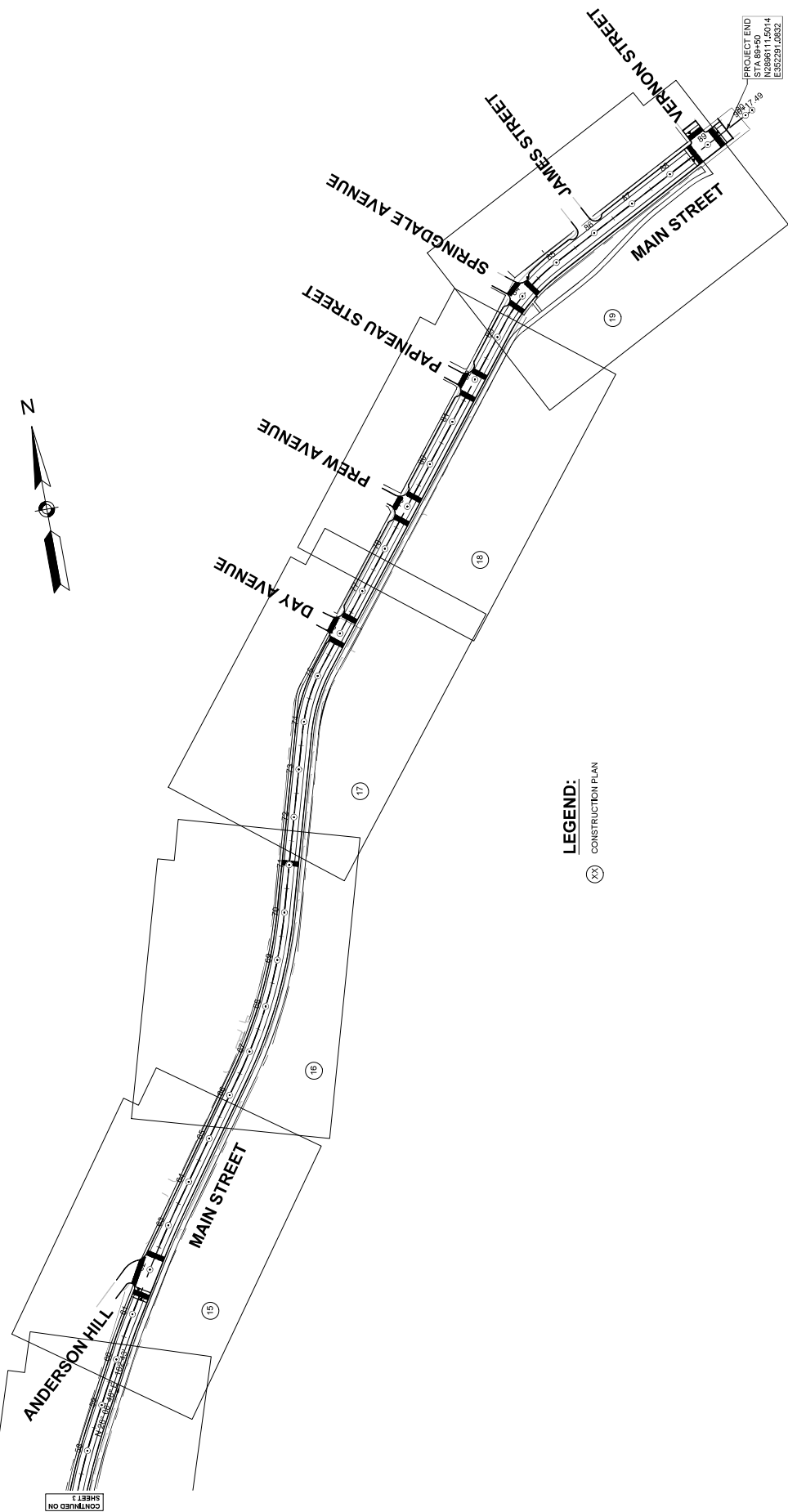
|                  |                |             |           |              |
|------------------|----------------|-------------|-----------|--------------|
| STATE            | REG. PROJ. NO. | PROJECT NO. | SHEET NO. | TOTAL SHEETS |
| MA               | -              | -           | 3         | 119          |
| PROJECT FILE NO. |                | -           |           |              |



HOLYOKE  
MAIN STREET

| STATE            | REG. PROJ. NO. | ISSUE NO. | SHEET NO. | TOTAL SHEETS |
|------------------|----------------|-----------|-----------|--------------|
| MA               | -              | 4         | 1         | 19           |
| PROJECT FILE NO. |                | -         |           |              |

KEY PLAN

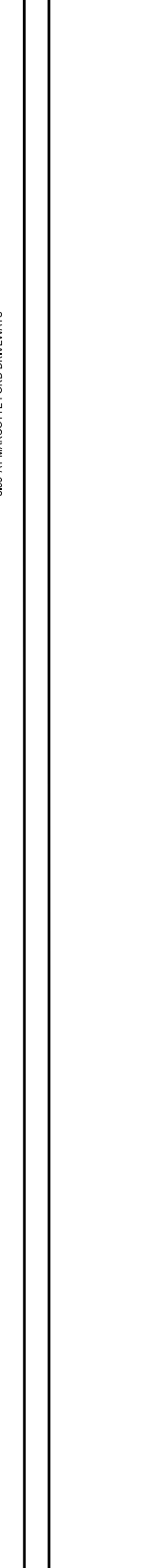
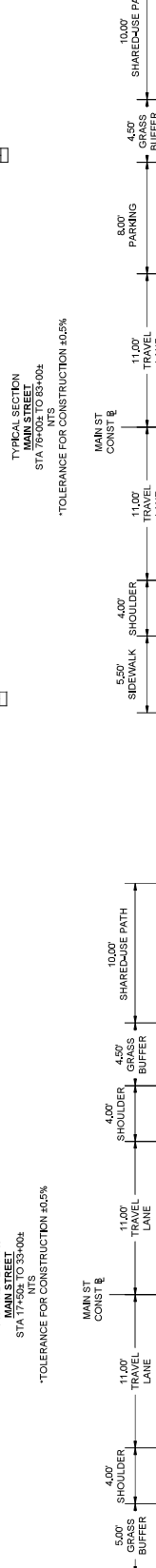
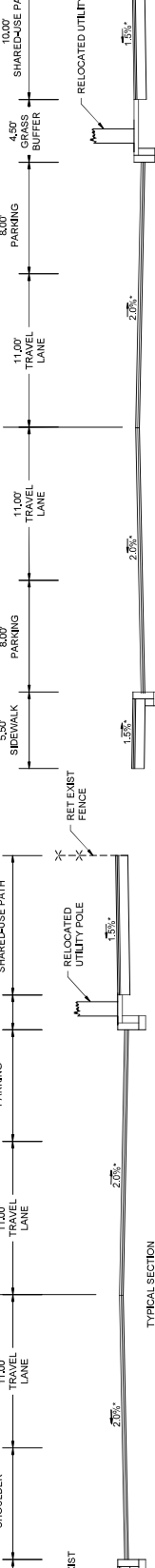
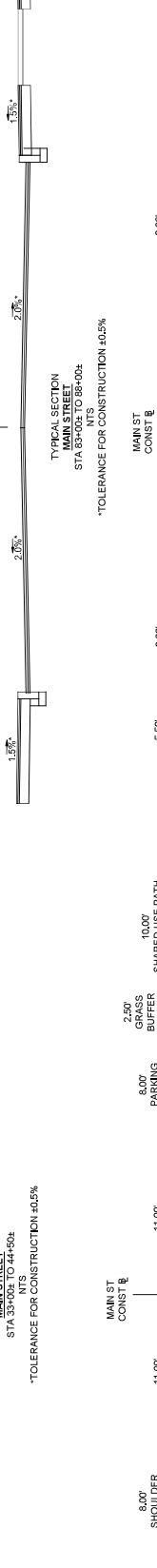
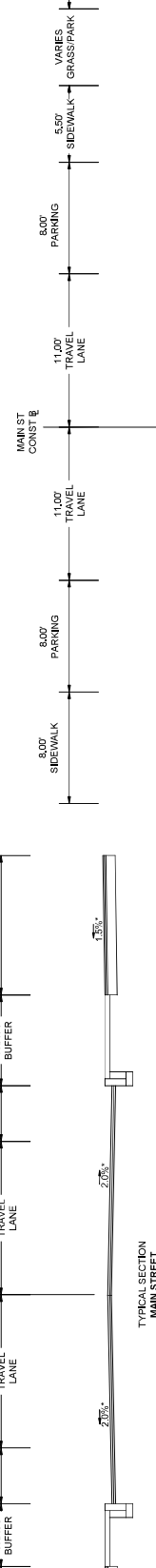


CONTINUED ON  
SHEET 1

**HOLYOKE  
MAIN STREET**

|                  |                |           |              |
|------------------|----------------|-----------|--------------|
| STATE            | REG. PROJ. NO. | SHEET NO. | TOTAL SHEETS |
| MA               | -              | 5         | 19           |
| PROJECT FILE NO. |                |           |              |

**TYPICAL SECTIONS**



HIGHWAY GUARD DETAILS

TRAFFIC SIGNAL CONDUIT

WATER SUPPLY ALTERATIONS

DRAINAGE DETAILS

HOLYOKE  
MAIN STREET

| STATE | REG. PROJ. NO. | NO. | SHEET NO. | TOTAL SHEETS |
|-------|----------------|-----|-----------|--------------|
| MA    | -              | 5   | 115       | -            |

PROJECT FILE NO. - -

CONSTRUCTION PLAN

JOHN P. MCCANN  
P.O. WINDSOR ST  
P.O. 118-00-004

JOHN P. MCCANN  
P.O. WINDSOR ST  
P.O. 118-00-004

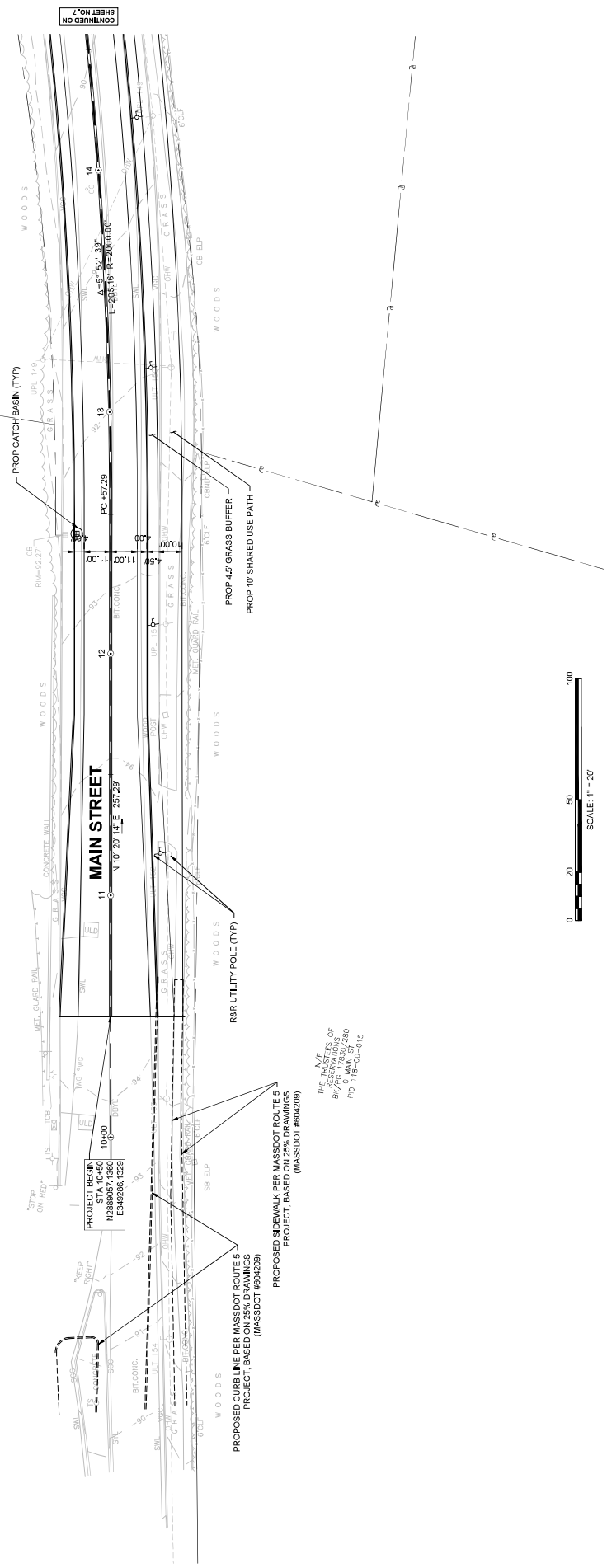
JOHN P. MCCANN  
P.O. WINDSOR ST  
P.O. 118-00-004



MOY, MARK P./E  
34 BAYVIEW ST  
WINDSOR, MA 01193  
P.O. 118-00-005

ROUTE 5  
MAIN STREET

CITY OF HOLYOKE  
P.O. MAIN ST  
P.O. 118-00-006



CONTINUED ON SHEET NO. 7



PROPOSED CURB LINE PER MASSDOT ROUTE 5  
PROJECT, BASED ON 25% DRAWINGS  
(MASSDOT #664299)

PROPOSED SIDEWALK PER MASSDOT ROUTE 5  
PROJECT, BASED ON 25% DRAWINGS  
(MASSDOT #664299)

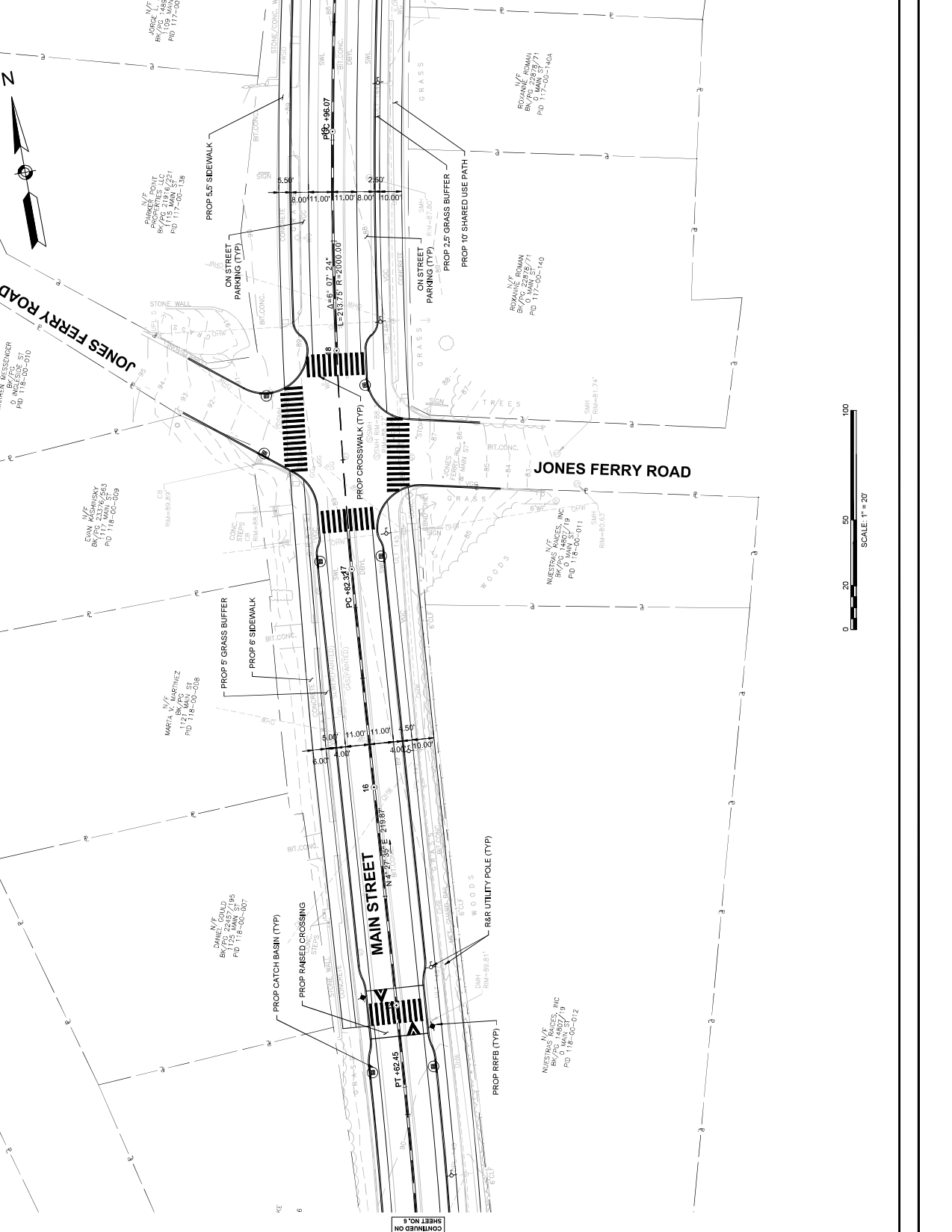
THE N/E  
ENGINEERS OF  
BAYVIEW PROPERTY, LLC  
P.O. 118-00-005  
P.O. 118-00-015

HIGHWAY GUARD DETAILS      TRAFFIC SIGNAL CONDUIT      WATER SUPPLY ALTERATIONS      DRAINAGE DETAILS

**HOLYOKE MAIN STREET CONSTRUCTION PLAN**

| STATE | REG. PROJ. NO. | NO. | SHEET NO. | TOTAL SHEETS |
|-------|----------------|-----|-----------|--------------|
| MA    | -              | -   | 7         | 119          |

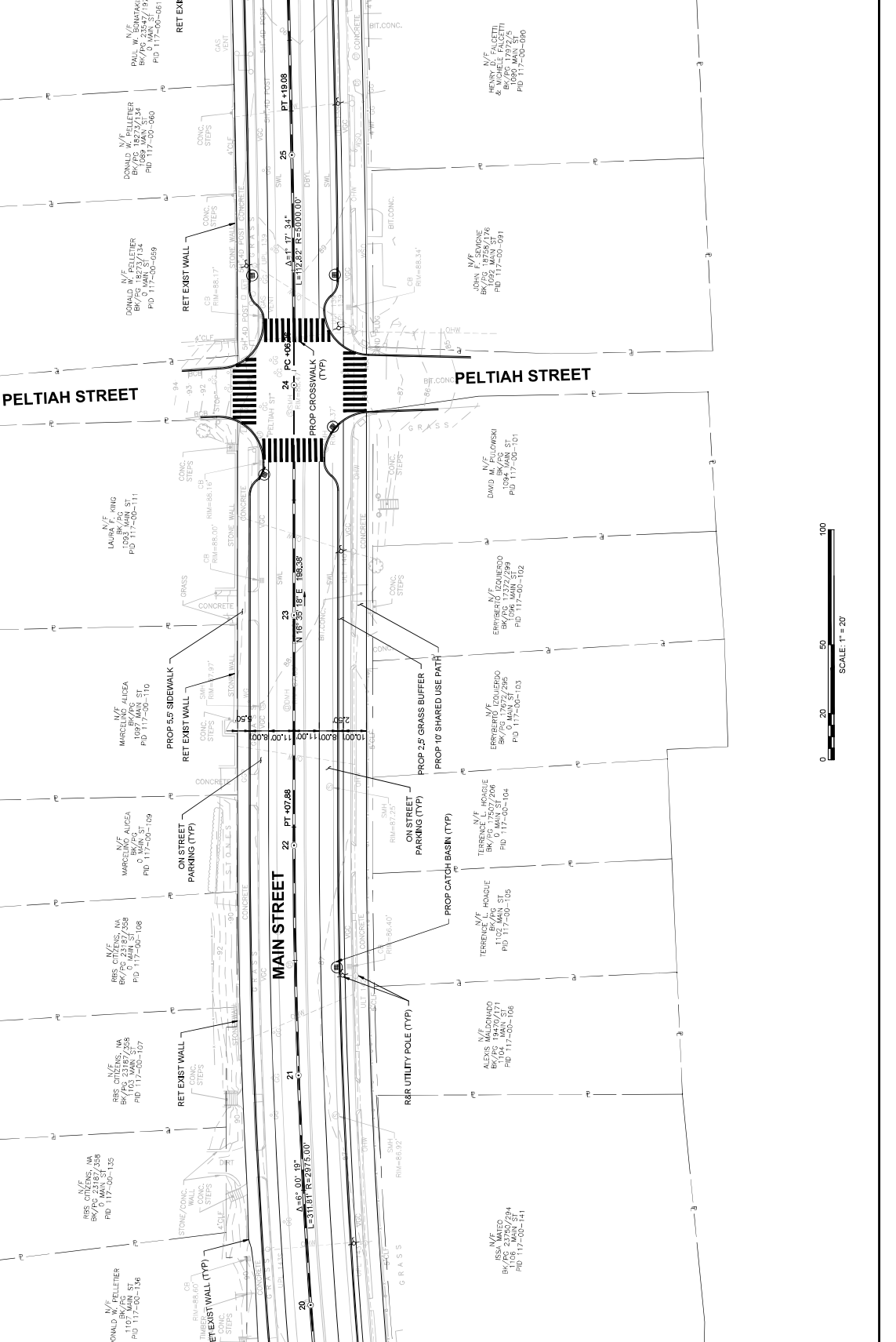
PROJECT FILE NO. -



CONTINUED ON SHEET NO. 8

CONTINUED ON SHEET NO. 6

| HOLYOKE MAIN STREET |                | CONSTRUCTION PLAN |              |
|---------------------|----------------|-------------------|--------------|
| STATE               | REG. PROJ. NO. | NO. SHEETS        | TOTAL SHEETS |
| MA                  | -              | B                 | 103          |
| PROJECT FILE NO.    |                | -                 |              |



CONTINUED ON SHEET NO. 9

SCALE: 1" = 20'

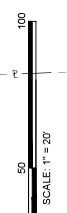
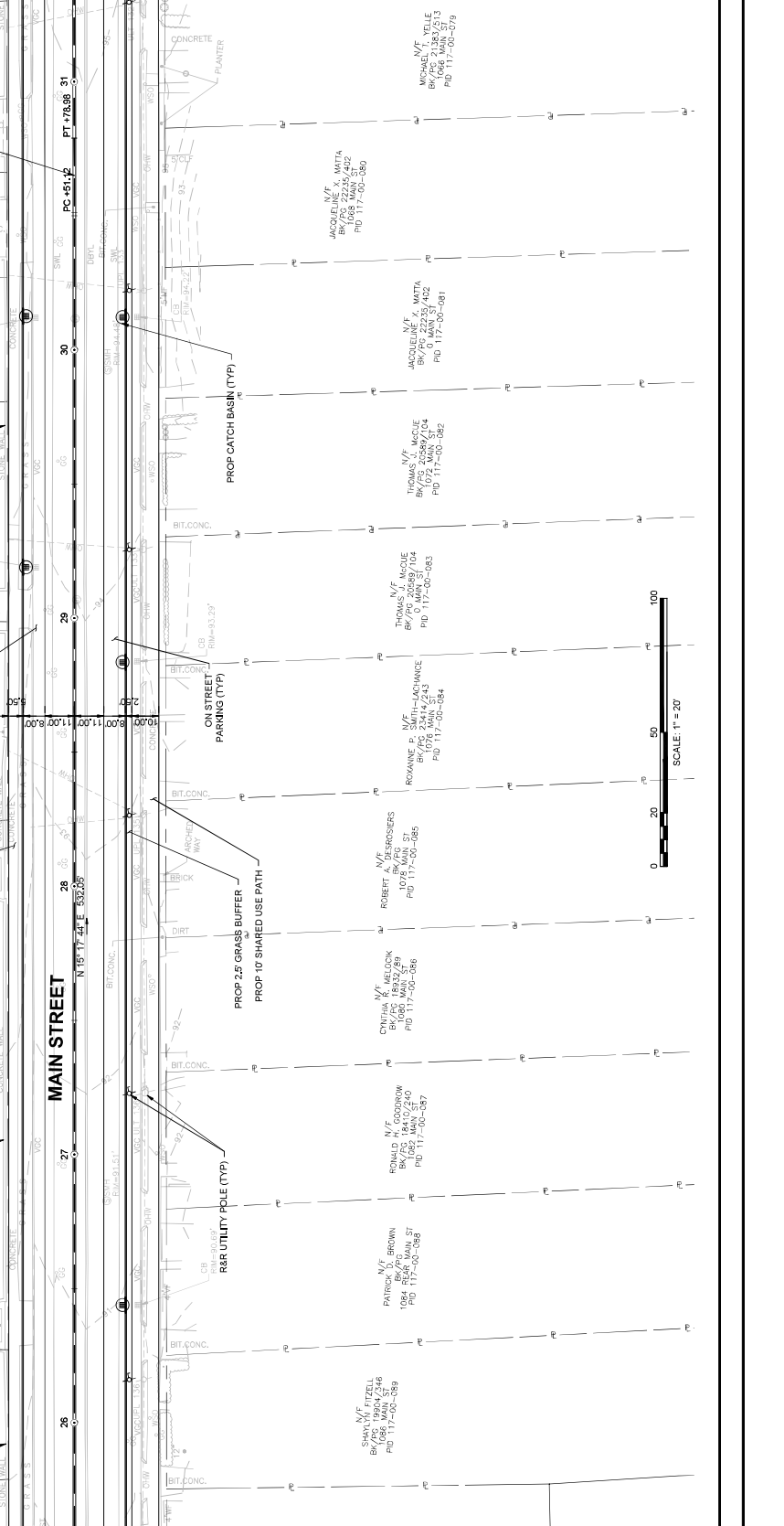
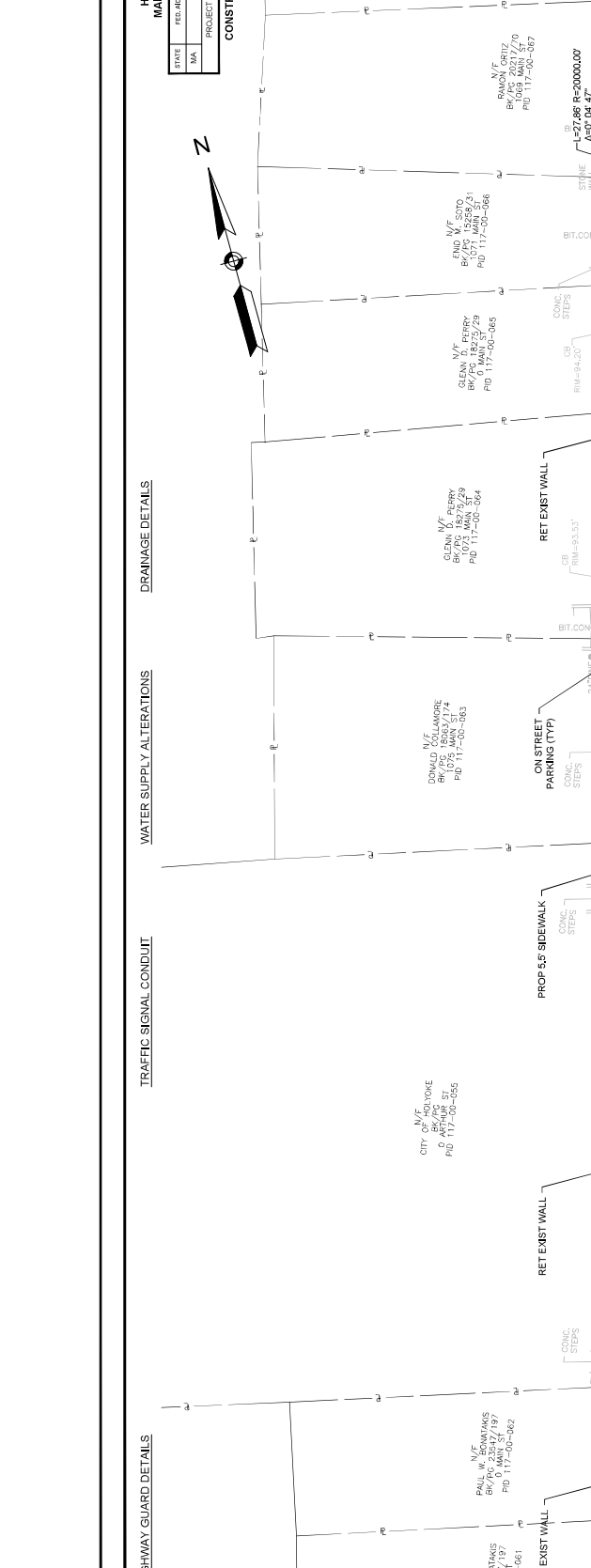
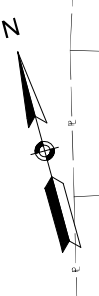
CONTINUED ON SHEET NO. 1



HOLYOKE  
MAIN STREET  
CONSTRUCTION PLAN

| STATE | REG. PROJ. NO. | NO. | DATE  |
|-------|----------------|-----|-------|
| MA    | ---            | 9   | 11/95 |
| MA    | ---            | 1   | 1985  |

PROJECT FILE NO. ---



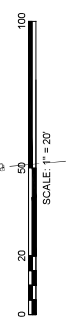
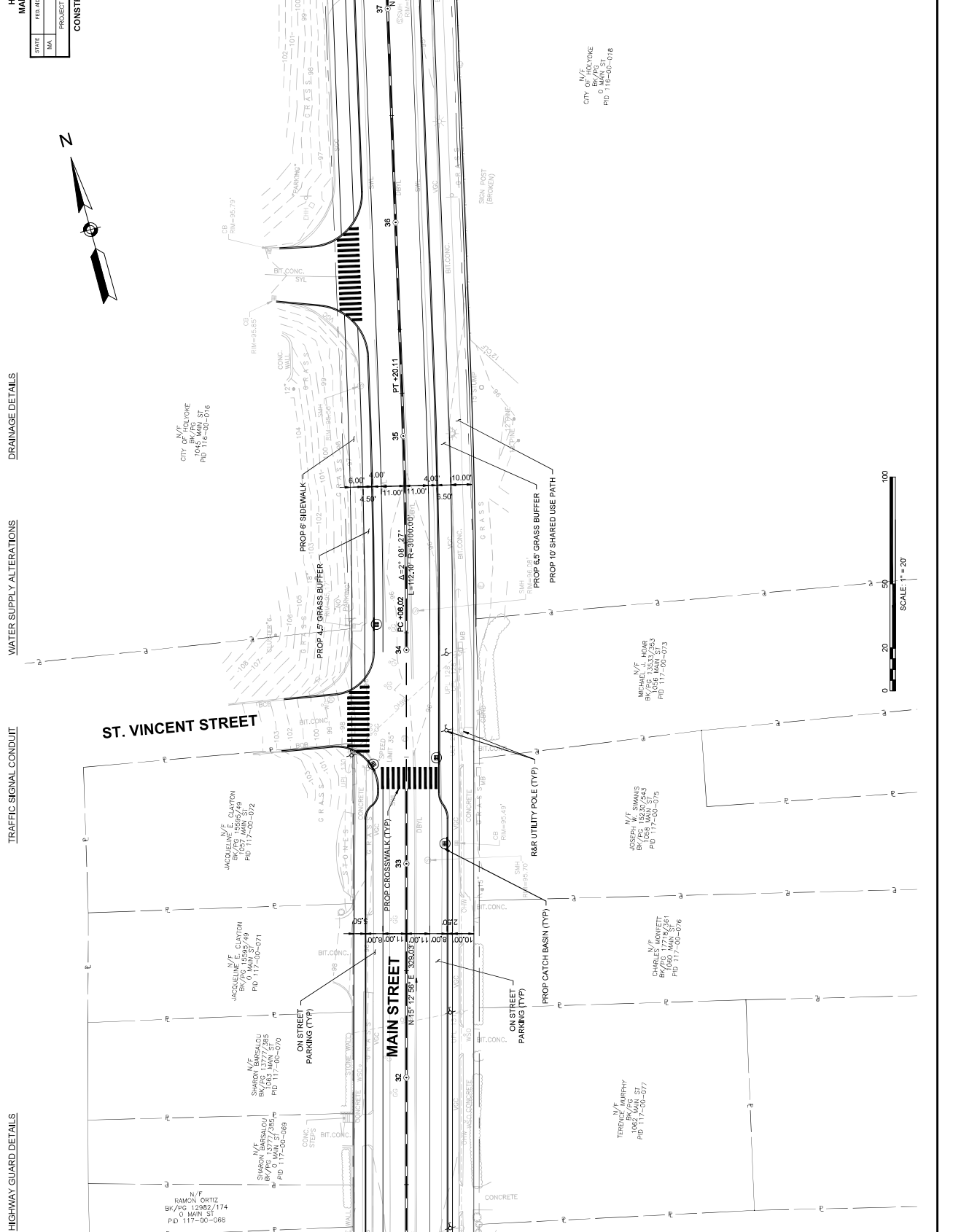
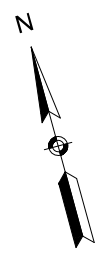
CONTINUED ON SHEET NO. 10

CONTINUED ON SHEET NO. 8

HIGHWAY GUARD DETAILS      TRAFFIC SIGNAL CONDUIT      WATER SUPPLY ALTERATIONS      DRAINAGE DETAILS      HOLYOKE MAIN STREET CONSTRUCTION PLAN

| STATE | REG. PROJ. NO. | NO. | DATE |
|-------|----------------|-----|------|
| MA    | -              | 10  | 19   |

PROJECT FILE NO. - -



CONTINUED ON SHEET NO. 11

CONTINUED ON SHEET NO. 9

HIGHWAY GUARD DETAILS

TRAFFIC SIGNAL CONDUIT

WATER SUPPLY ALTERATIONS

DRAINAGE DETAILS

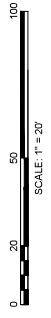
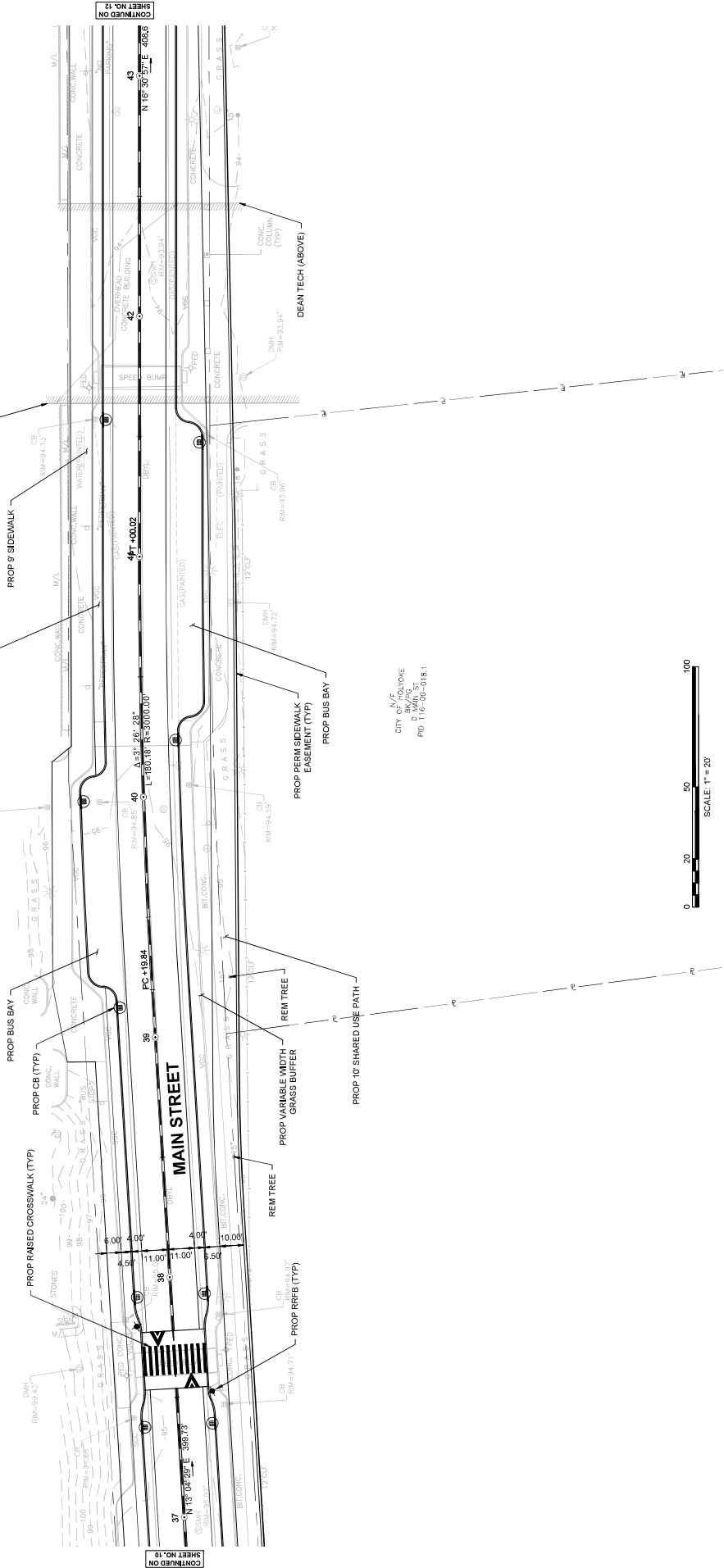
HOLYOKE  
MAIN STREET

| CONSTRUCTION PLAN |    |
|-------------------|----|
| STATE             | MA |
| FED. PROJ. NO.    |    |
| NO. SHEETS        | 11 |
| TOTAL SHEETS      | 15 |
| PROJECT FILE NO.  |    |



CITY OF HOLYOKE  
1028 BRIDGE ST.  
HOLYOKE, MA 01102  
PHONE: 508-763-3114

CITY OF HOLYOKE  
1028 BRIDGE ST.  
HOLYOKE, MA 01102  
PHONE: 508-763-3114



CONTINUED ON  
SHEET NO. 12

CONTINUED ON  
SHEET NO. 10

HIGHWAY GUARD DETAILS

TRAFFIC SIGNAL CONDUIT

WATER SUPPLY ALTERATIONS

DRAINAGE DETAILS

HOLYOKE  
MAIN STREET  
CONSTRUCTION PLAN

| STATE            | FED. PROJ. NO. | NO. | SHEET NO. | TOTAL SHEETS |
|------------------|----------------|-----|-----------|--------------|
| MA               | -              | -   | 12        | 18           |
| PROJECT FILE NO. |                | -   |           |              |

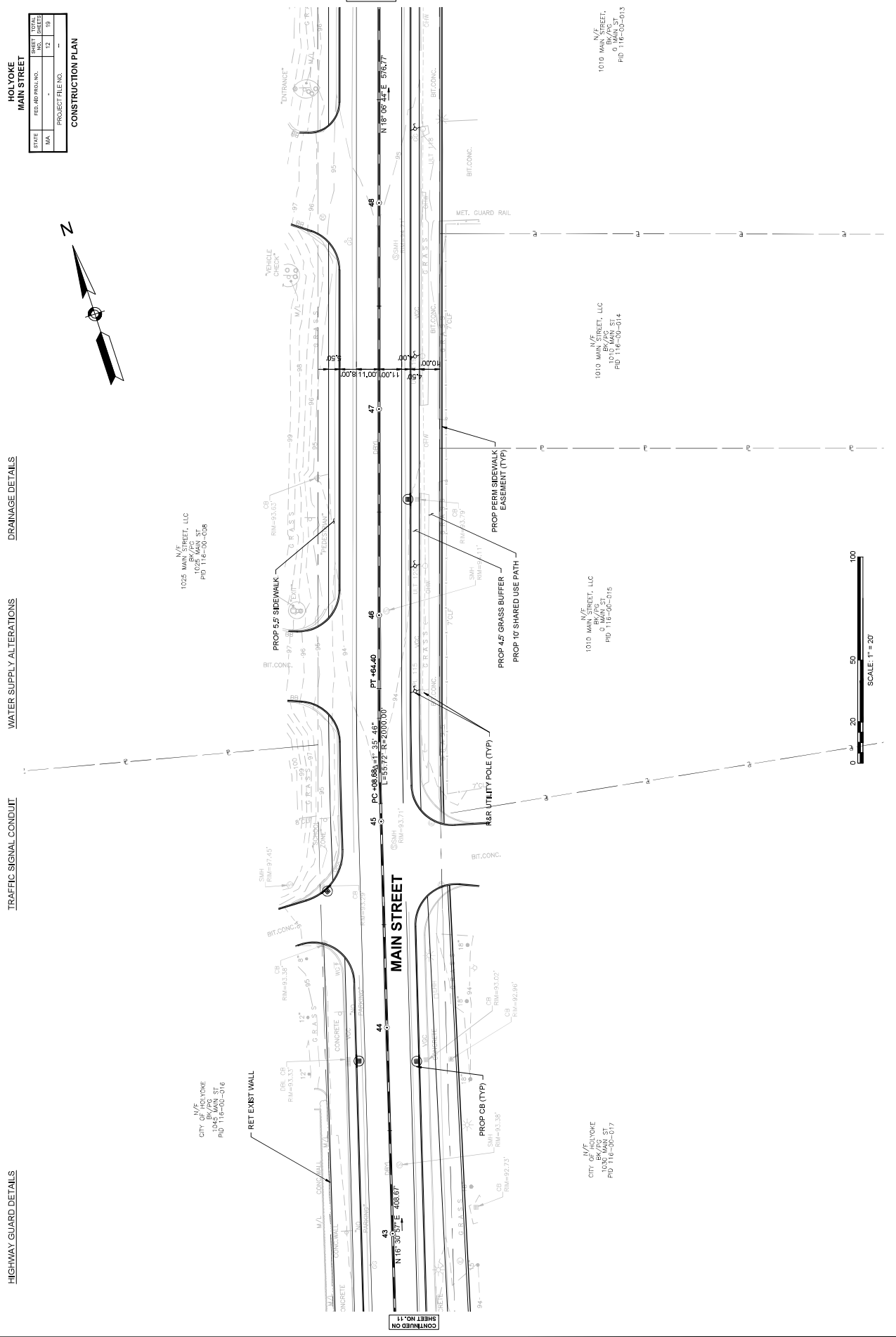


N/E  
1025 MAIN STREET, LLC  
1025 MAIN ST  
PID 116-00-038

CITY OF HOLYOKE  
1034 MAIN ST  
PID 116-00-010

N/E  
1010 MAIN STREET, LLC  
1010 MAIN ST  
PID 116-00-014

N/E  
1010 MAIN STREET,  
0 BAY ST  
PID 116-00-013



CONTINUED ON  
SHEET NO. 11

CONTINUED ON  
SHEET NO. 13

HIGHWAY GUARD DETAILS

TRAFFIC SIGNAL CONDUIT

WATER SUPPLY ALTERATIONS

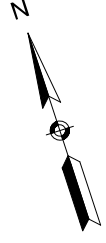
DRAINAGE DETAILS

HOLYOKE  
MAIN STREET

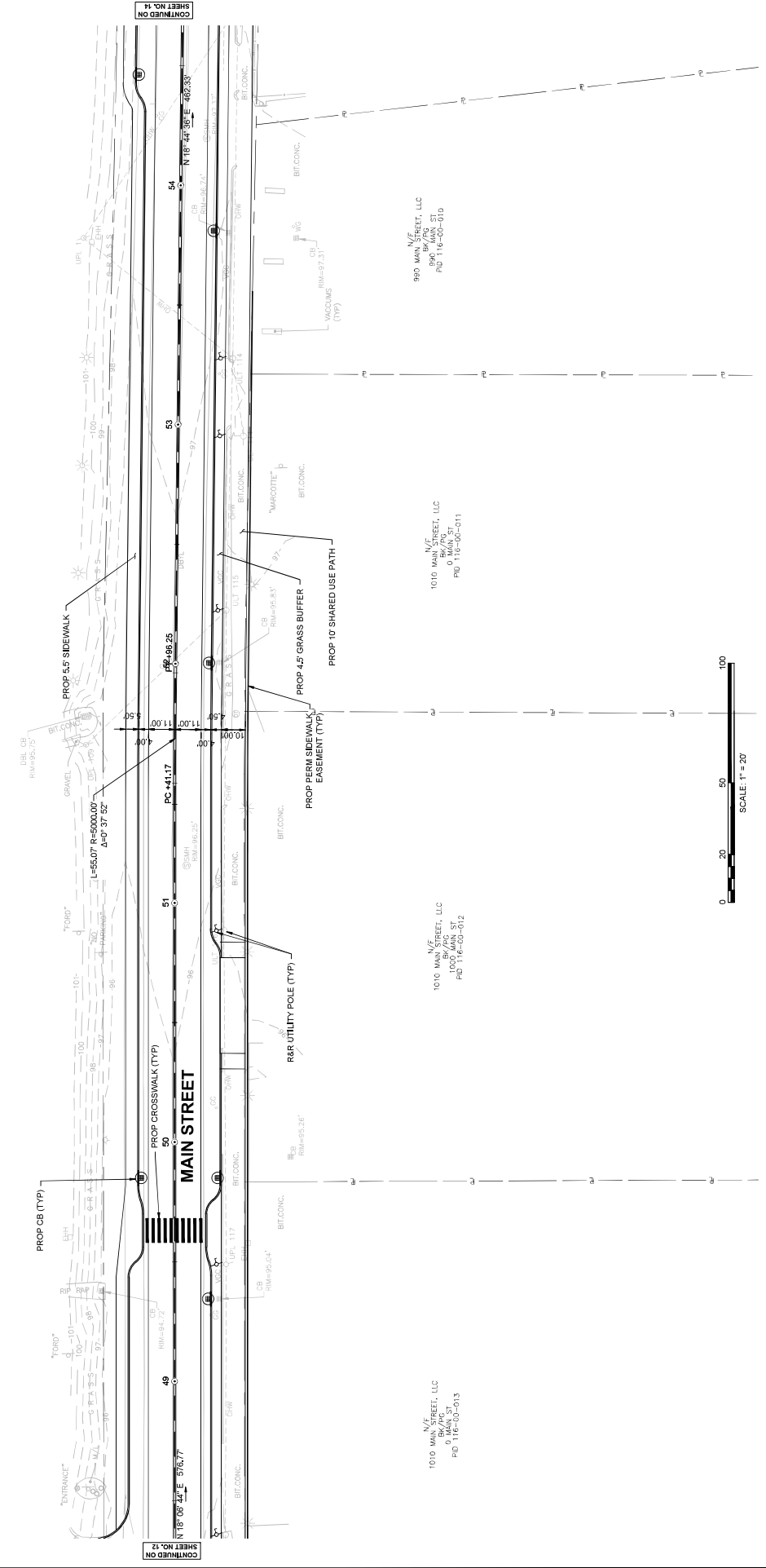
| STATE | REG. PROJ. NO. | NO. | SHEET NO. | TOTAL SHEETS |
|-------|----------------|-----|-----------|--------------|
| MA    | -              | 13  | 13        | 13           |

PROJECT FILE NO. - -

CONSTRUCTION PLAN



N/E  
1025 MAIN STREET, LLC  
1025 MAIN ST  
PID 116-00-008



SHEET NO. 13

SHEET NO. 13



N/E  
1010 MAIN STREET, LLC  
000 MAIN ST  
PID 116-00-013

N/E  
1010 MAIN STREET, LLC  
000 MAIN ST  
PID 116-00-012

N/E  
1010 MAIN STREET, LLC  
000 MAIN ST  
PID 116-00-011

N/E  
980 MAIN STREET, LLC  
890 MAIN ST  
PID 116-00-010

HIGHWAY GUARD DETAILS

TRAFFIC SIGNAL CONDUIT

WATER SUPPLY ALTERATIONS

DRAINAGE DETAILS

HOLYOKE  
MAIN STREET

| STATE | REG. PROJ. NO. | NO. SHEETS | SHEET NO. |
|-------|----------------|------------|-----------|
| MA    | -              | 14         | 13        |

PROJECT FILE NO. - -

**CONSTRUCTION PLAN**

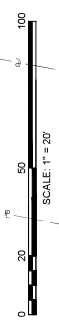
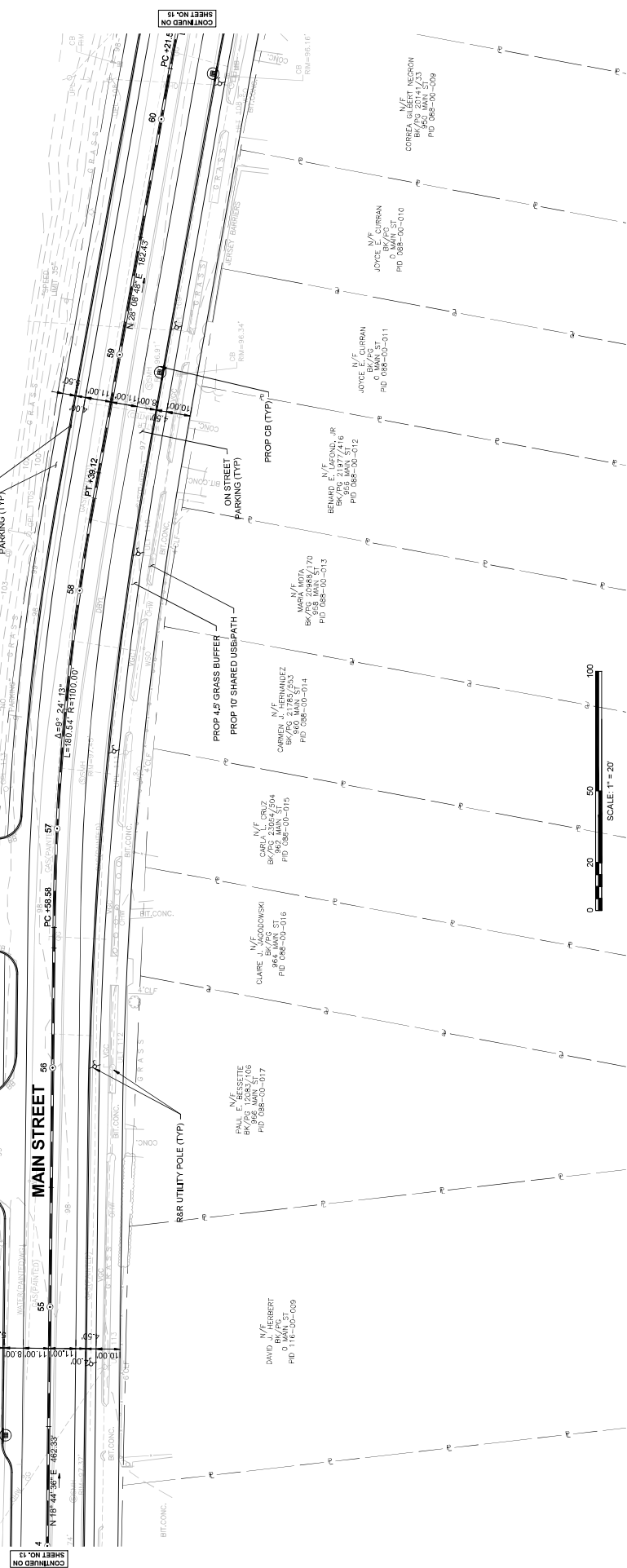


ANDERSON N/F HOLDINGS, LLC  
105 MAIN ST  
BK/PG 2324/2504  
PID 088-00-010

1025 MAIN STREET, LLC  
105 MAIN ST  
BK/PG 2324/2504  
PID 116-00-008

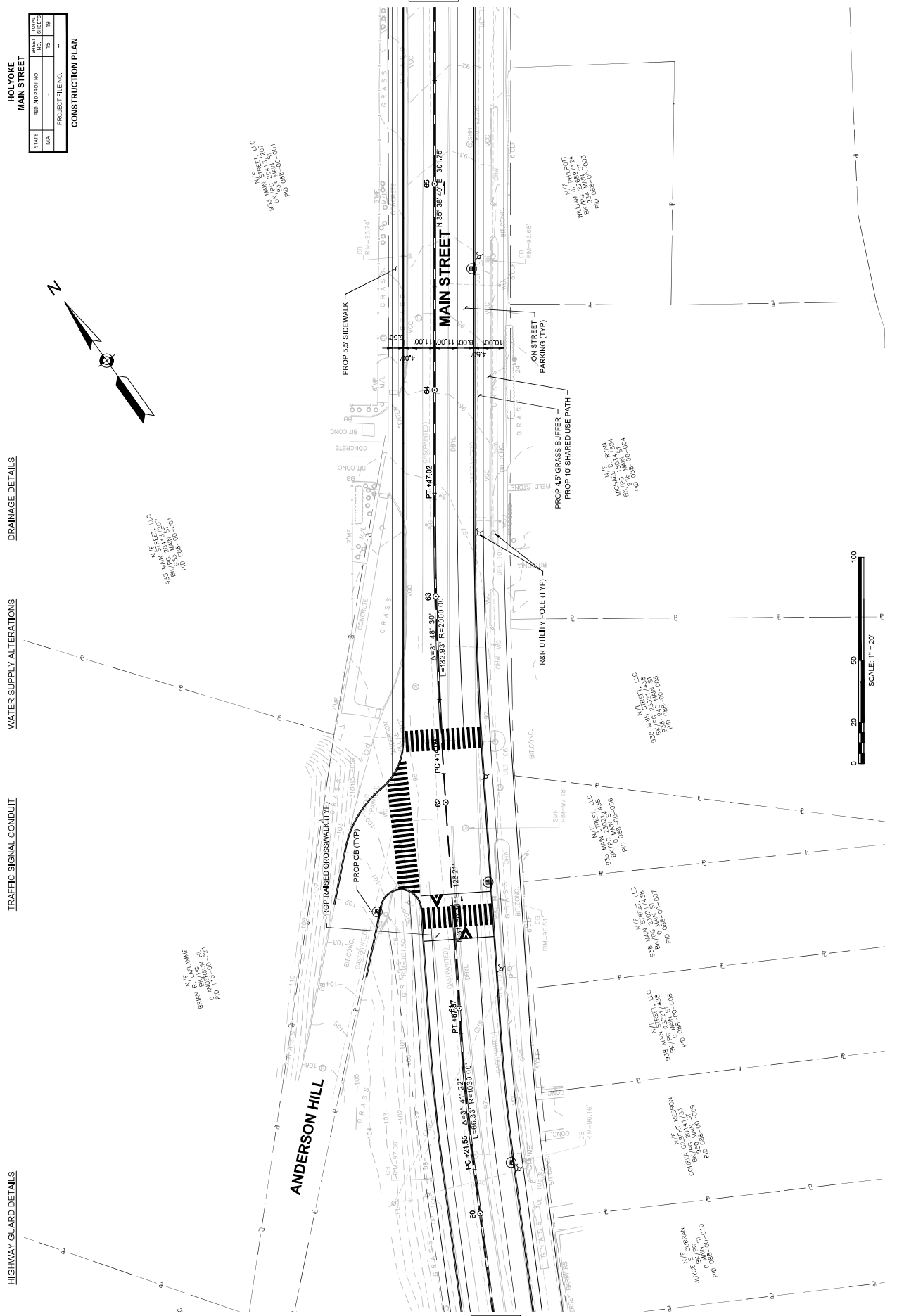
N/F  
1025 MAIN STREET, LLC  
105 MAIN ST  
BK/PG 2324/2504  
PID 116-00-008

700XK LANE  
100' 99' 98' 97' 96' 95' 94' 93' 92' 91' 90' 89' 88' 87' 86' 85' 84' 83' 82' 81' 80' 79' 78' 77' 76' 75' 74' 73' 72' 71' 70' 69' 68' 67' 66' 65' 64' 63' 62' 61' 60' 59' 58' 57' 56' 55' 54' 53' 52' 51' 50' 49' 48' 47' 46' 45' 44' 43' 42' 41' 40' 39' 38' 37' 36' 35' 34' 33' 32' 31' 30' 29' 28' 27' 26' 25' 24' 23' 22' 21' 20' 19' 18' 17' 16' 15' 14' 13' 12' 11' 10' 9' 8' 7' 6' 5' 4' 3' 2' 1' 0'



SHEET NO. 13

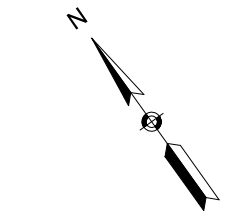
CONTINUED ON SHEET NO. 14



| STATE | REG. PROJ. NO. | REG. NO. | DATE |
|-------|----------------|----------|------|
| MA    | -              | 15       | 10   |

PROJECT FILE NO. - -

CONSTRUCTION PLAN



SHEET NO. 18

CONTINUED ON

HIGHWAY GUARD DETAILS      TRAFFIC SIGNAL CONDUIT      WATER SUPPLY ALTERATIONS      DRAINAGE DETAILS      HOLYOKE MAIN STREET CONSTRUCTION PLAN

| STATE | REG. PROJ. NO. | REG. NO. | DATE |
|-------|----------------|----------|------|
| MA    | -              | 16       | 1/15 |

PROJECT FILE NO. - - -

HOLYOKE MAIN STREET  
CONSTRUCTION PLAN



N/E  
A/N STREET, LLC  
15 MAIN ST, 2ND FLOOR  
HOLYOKE, MA 01901  
508-550-5091

SHEET NO. 15

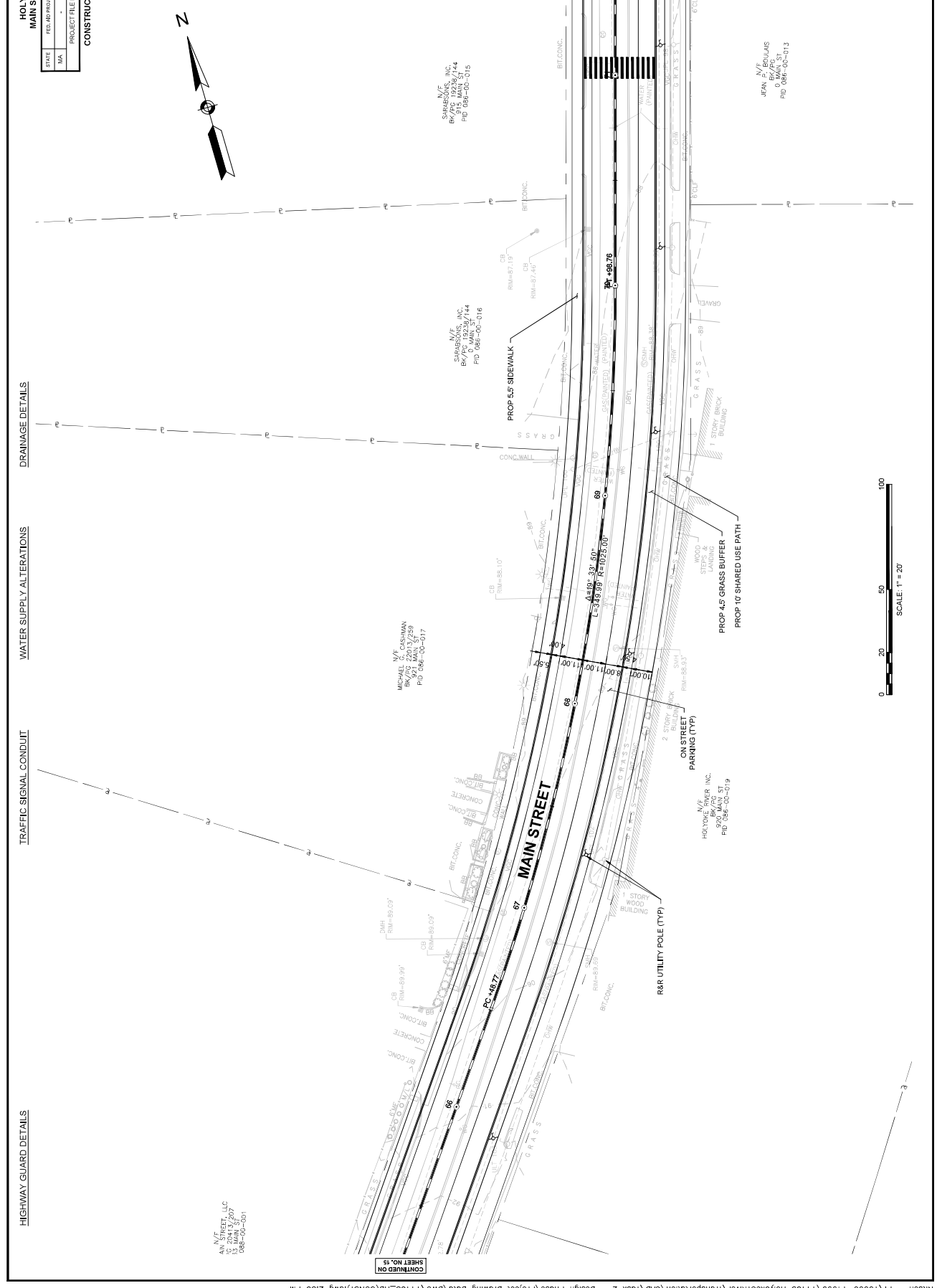
MICHAEL V.F. SHAWMAN  
BK/FC 22033/144  
PID 088-00-017

SARAH V.F. WINSLOW  
BK/FC 19238/144  
PID 088-00-016

SARAH V.F. WINSLOW  
BK/FC 19238/144  
PID 088-00-016

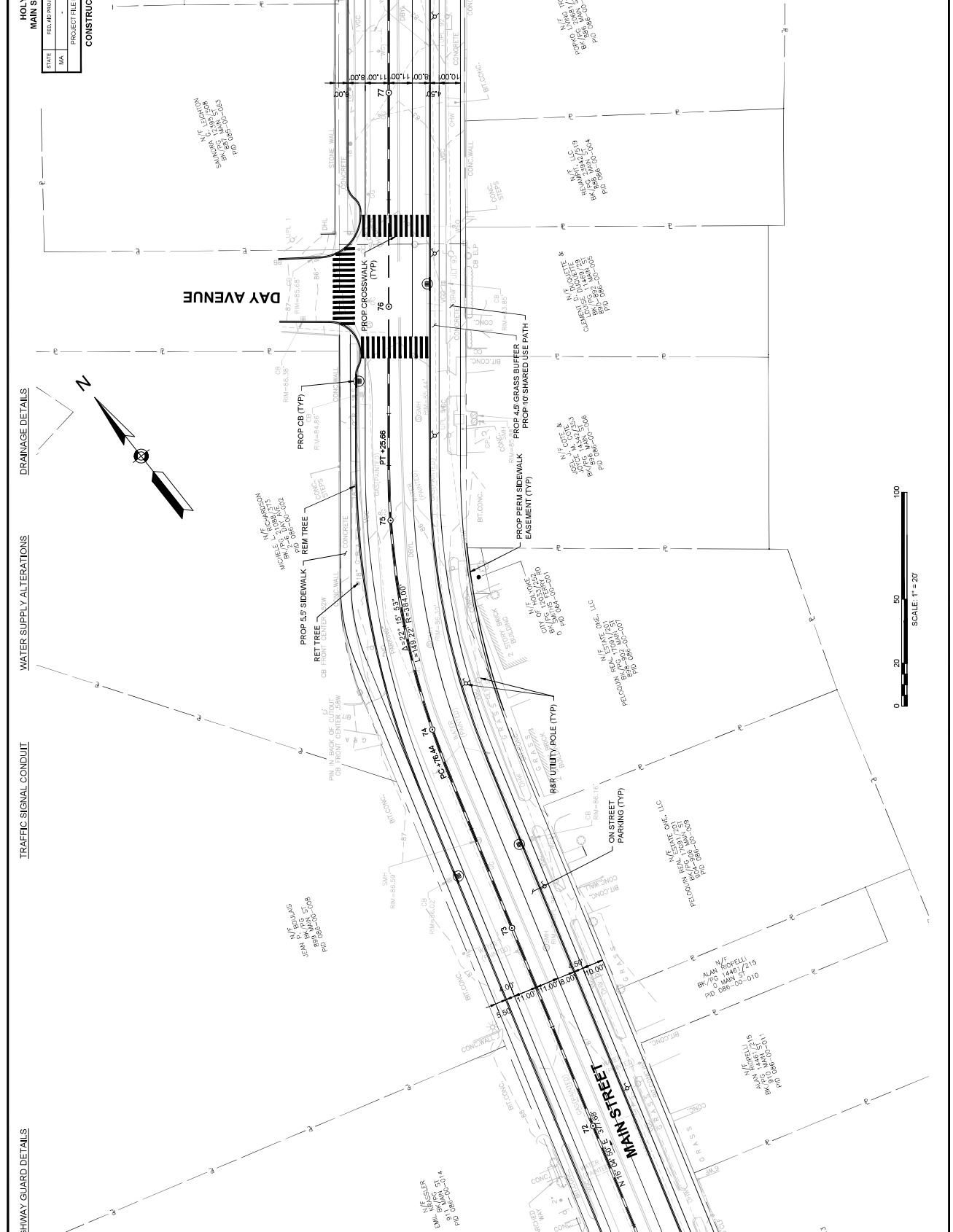
N/E  
HOLYOKE RIVER, INC.  
920 MAIN ST  
HOLYOKE, MA 01901  
508-550-0199

JEPAN V.F. ECKHARTS  
BK/FC 19238/144  
PID 088-00-013



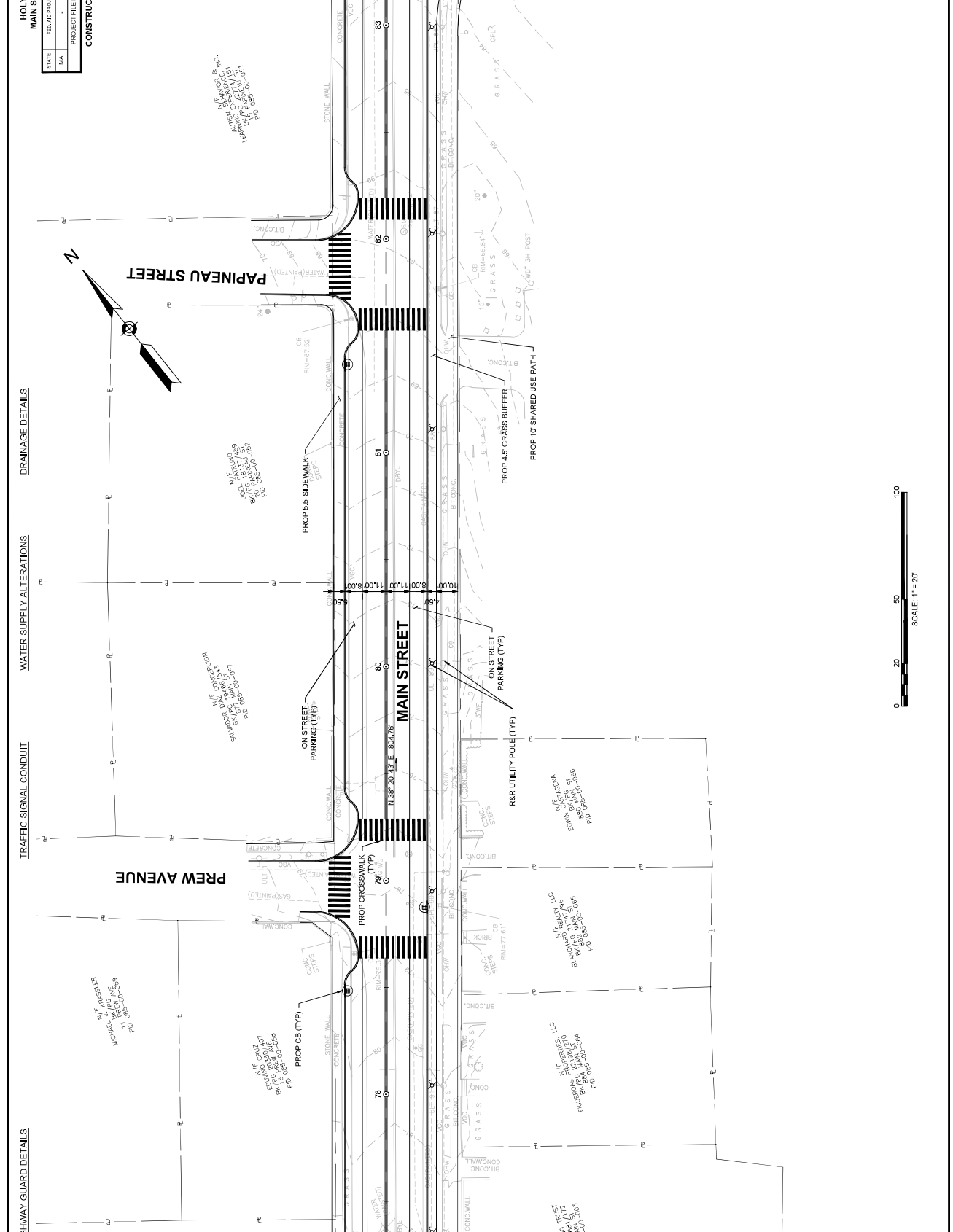
SHEET NO. 17





| HOLYOKE MAIN STREET |                  |
|---------------------|------------------|
| STATE               | REG. PROJ. NO.   |
| MA                  | MA               |
| PROJECT FILE NO.    | PROJECT FILE NO. |
| NO. SHEETS          | NO. SHEETS       |
| 17                  | 18               |

CONSTRUCTION PLAN



| HOLYOKE<br>MAIN STREET |    |
|------------------------|----|
| STATE                  | MA |
| FED. AID PROJ. NO.     | -  |
| PROJECT FILE NO.       | -  |
| NO. SHEETS             | 19 |
| SHEET NO.              | 18 |

| CONSTRUCTION PLAN |             |
|-------------------|-------------|
| DATE              | 11/15/18    |
| DESIGNER          | W. J. BROWN |
| CHECKER           | W. J. BROWN |
| APPROVED          | W. J. BROWN |

SHEET NO. 17

SCALE: 1" = 20'

SHEET NO. 18

HIGHWAY GUARD DETAILS

TRAFFIC SIGNAL CONDUIT

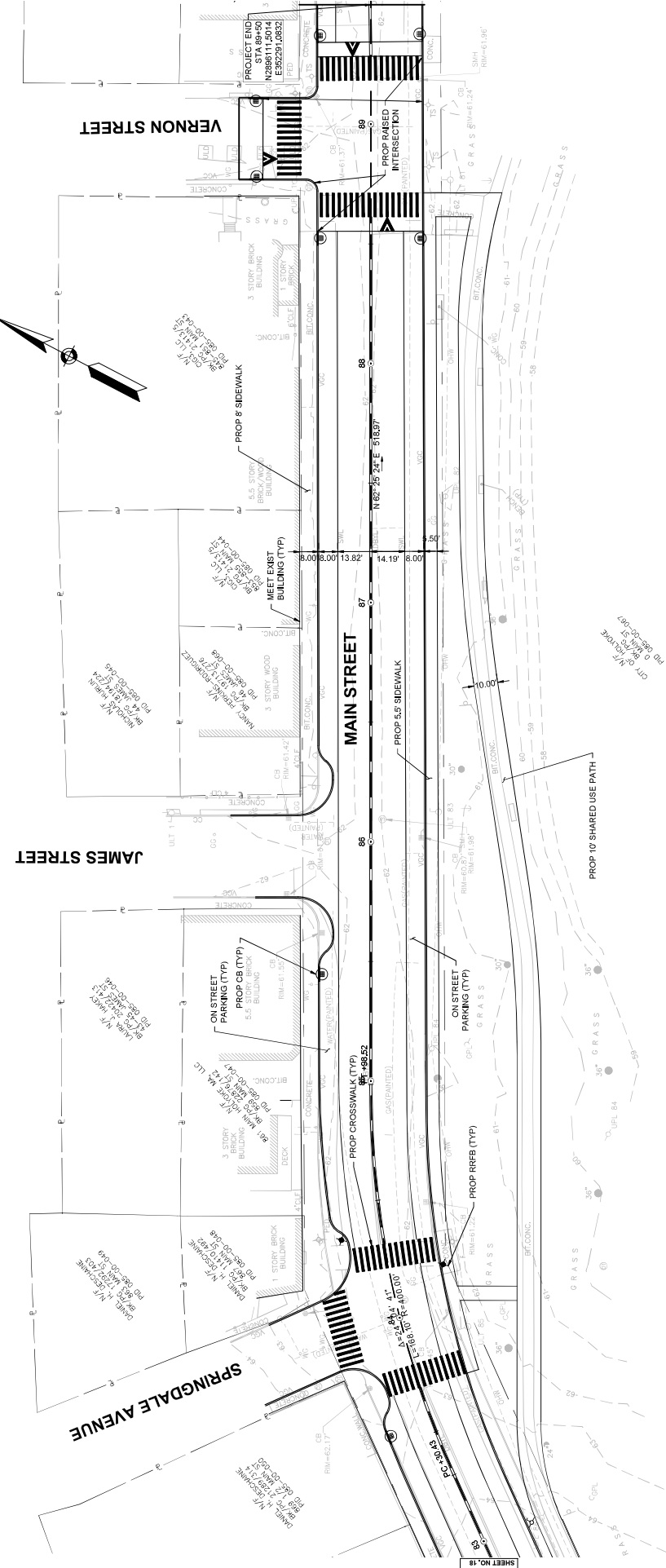
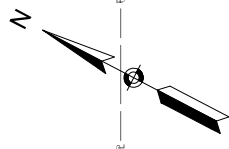
WATER SUPPLY ALTERATIONS

DRAINAGE DETAILS

HOLYOKE  
MAIN STREET

|                    |                |     |      |
|--------------------|----------------|-----|------|
| STATE              | REG. PROJ. NO. | NO. | DATE |
| MA                 | -              | 19  | 1/15 |
| PROJECT FILE NO. - |                |     |      |

CONSTRUCTION PLAN



ON OFF-DRAINAGE  
NO. 0862-01007



CONTINUED ON  
SHEET NO. 18

HIGHWAY GUARD DETAILS

TRAFFIC SIGNAL CONDUIT

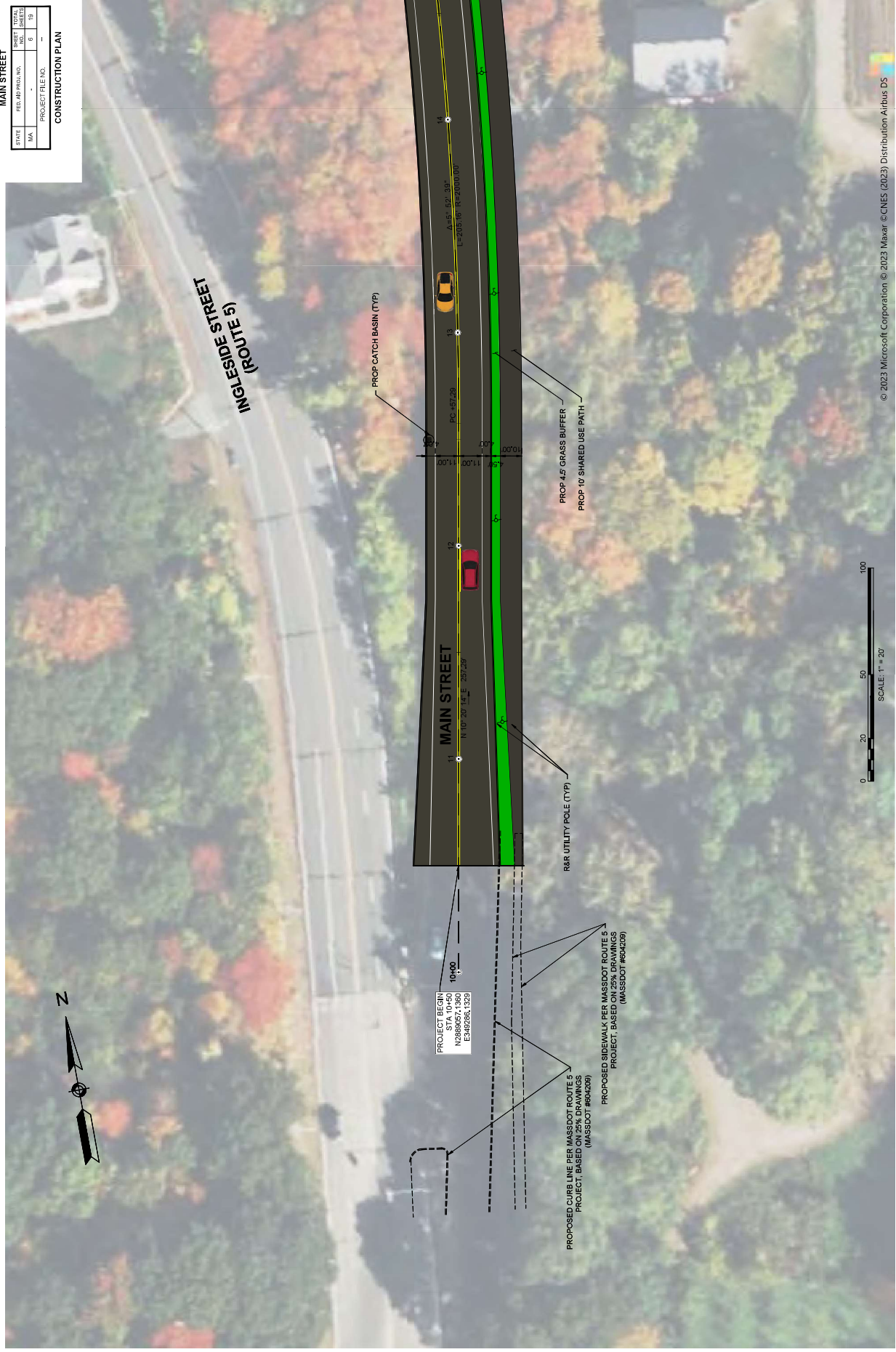
WATER SUPPLY ALTERATIONS

DRAINAGE DETAILS

HOLYOKE  
MAIN STREET

|                  |                |           |              |
|------------------|----------------|-----------|--------------|
| STATE            | REG. PROJ. NO. | SHEET NO. | TOTAL SHEETS |
| MA               | -              | 5         | 10           |
| PROJECT FILE NO. |                | -         |              |

CONSTRUCTION PLAN



CONTINUED ON  
SHEET NO. 7

© 2023 Microsoft Corporation © 2023 Maxar © CNES (2023) Distribution Airbus DS

HIGHWAY GUARD DETAILS

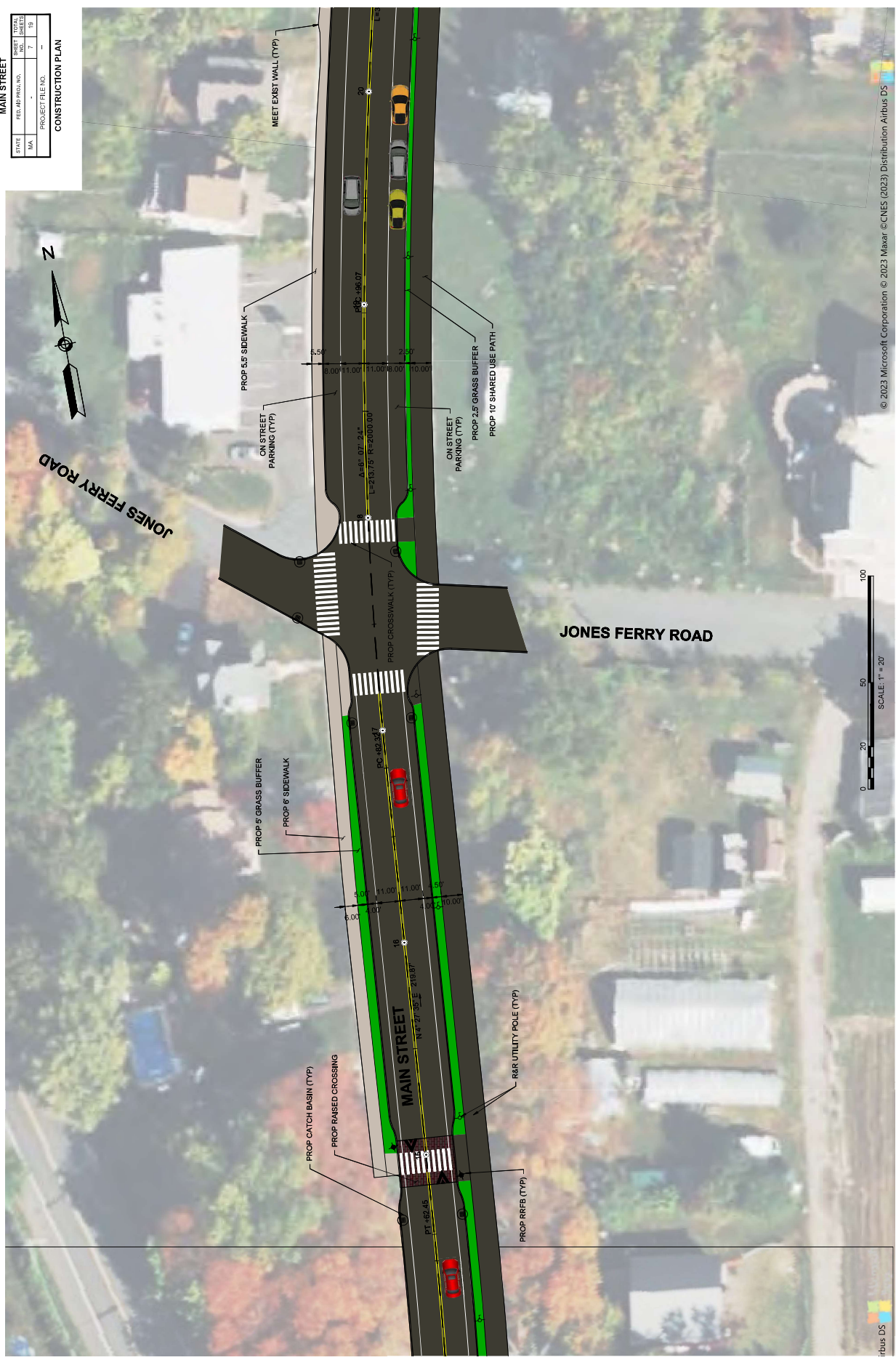
TRAFFIC SIGNAL CONDUIT

WATER SUPPLY ALTERATIONS

DRAINAGE DETAILS

HOLYOKE  
MAIN STREET  
CONSTRUCTION PLAN

| STATE | REG. PROJ. NO. | PROJECT FILE NO. | SHEET NO. | TOTAL SHEETS |
|-------|----------------|------------------|-----------|--------------|
| MA    | -              | -                | 7         | 19           |



CONTINUED ON SHEET NO. 8

CONTINUED ON SHEET NO. 6

HIGHWAY GUARD DETAILS

TRAFFIC SIGNAL CONDUIT

WATER SUPPLY ALTERATIONS

DRAINAGE DETAILS

HOLYOKE  
MAIN STREET

|                  |                |           |              |
|------------------|----------------|-----------|--------------|
| STATE            | REG. PROJ. NO. | SHEET NO. | TOTAL SHEETS |
| MA               | -              | 9         | 119          |
| PROJECT FILE NO. |                | -         |              |

CONSTRUCTION PLAN



CONTINUED ON  
SHEET NO. 1

CONTINUED ON  
SHEET NO. 9



HIGHWAY GUARD DETAILS

TRAFFIC SIGNAL CONDUIT

WATER SUPPLY ALTERATIONS

DRAINAGE DETAILS

HOLYOKE  
MAIN STREET

| STATE | REG. PROJ. NO. | ISSUE NO. | DATE |
|-------|----------------|-----------|------|
| MA    | -              | 9         | 1/15 |

PROJECT FILE NO. - -

CONSTRUCTION PLAN



CONTINUED ON  
SHEET NO. 8

CONTINUED ON  
SHEET NO. 10

© 2013 Autodesk, Inc. All rights reserved. Autodesk reserves the right to alter product offerings and specifications at any time without notice, and is not responsible for typographical or graphical errors that appear in this document.

HIGHWAY GUARD DETAILS

TRAFFIC SIGNAL CONDUIT

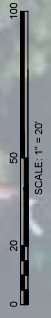
WATER SUPPLY ALTERATIONS

DRAINAGE DETAILS

HOLYOKE  
MAIN STREET

| STATE | REG. PROJ. NO. | SHEET NO. | TOTAL SHEETS |
|-------|----------------|-----------|--------------|
| MA    | -              | 10        | 115          |

PROJECT FILE NO. -  
CONSTRUCTION PLAN



© 2023 Microsoft Corporation © 2023 Mavaar © CNES (2023) Distribution Airbus DS



HIGHWAY GUARD DETAILS

TRAFFIC SIGNAL CONDUIT

WATER SUPPLY ALTERATIONS

DRAINAGE DETAILS

HOLYOKE  
MAIN STREET

| STATE | REG. PROJ. NO. | NO. | DATE |
|-------|----------------|-----|------|
| MA    | -              | 11  | 19   |

PROJECT FILE NO. - -

CONSTRUCTION PLAN



CONTINUED ON  
SHEET NO. 18

CONTINUED ON  
SHEET NO. 12

HIGHWAY GUARD DETAILS

TRAFFIC SIGNAL CONDUIT

WATER SUPPLY ALTERATIONS

DRAINAGE DETAILS

HOLYOKE  
MAIN STREET

| STATE | REG. PROJ. NO. | NO. | SHEET NO. | TOTAL SHEETS |
|-------|----------------|-----|-----------|--------------|
| MA    | -              | -   | 12        | 18           |

PROJECT FILE NO. - -

CONSTRUCTION PLAN



CONTINUED ON  
SHEET NO. 13

CONTINUED ON  
SHEET NO. 11



HIGHWAY GUARD DETAILS

TRAFFIC SIGNAL CONDUIT

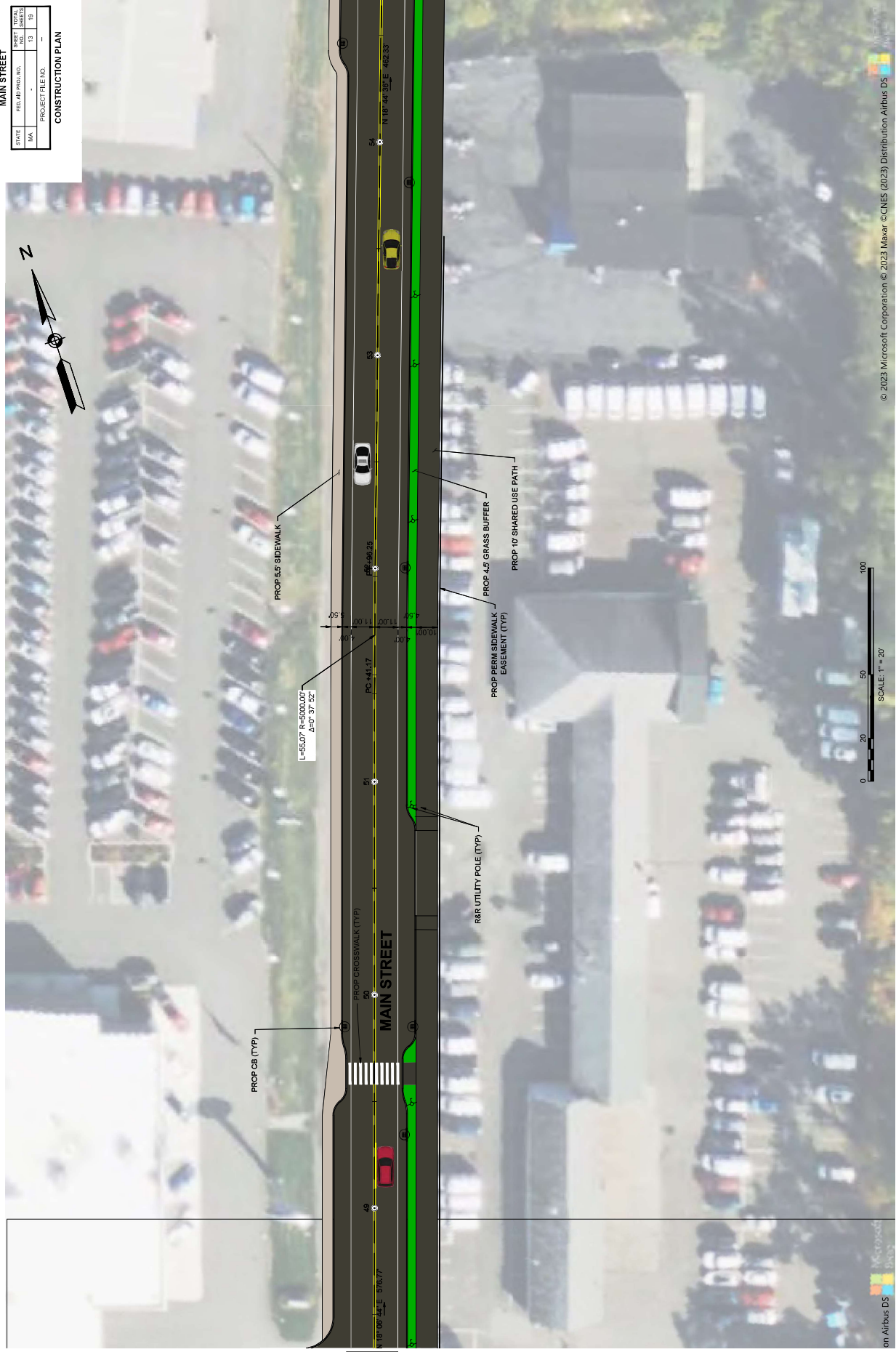
WATER SUPPLY ALTERATIONS

DRAINAGE DETAILS

HOLYOKE  
MAIN STREET

| STATE | REG. PROJ. NO. | NO. | SHEET NO. | TOTAL SHEETS |
|-------|----------------|-----|-----------|--------------|
| MA    | -              | 13  | 13        | 13           |

PROJECT FILE NO. - -  
CONSTRUCTION PLAN



CONTINUED ON  
SHEET NO. 14

CONTINUED ON  
SHEET NO. 12

HIGHWAY GUARD DETAILS

TRAFFIC SIGNAL CONDUIT

WATER SUPPLY ALTERATIONS

DRAINAGE DETAILS

HOLYOKE  
MAIN STREET

| STATE | REG. PROJ. NO. | DESIGN NO. | DATE |
|-------|----------------|------------|------|
| MA    | -              | 14         | 1/19 |

PROJECT FILE NO. - -

CONSTRUCTION PLAN



CONTINUED ON  
SHEET NO. 15

CONTINUED ON  
SHEET NO. 15



© 2023 Microsoft Corporation © 2023 Maxar © CNES (2023) Distribution Airbus DS

button Airbus DS

HIGHWAY GUARD DETAILS

TRAFFIC SIGNAL CONDUIT

WATER SUPPLY ALTERATIONS

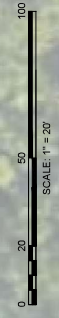
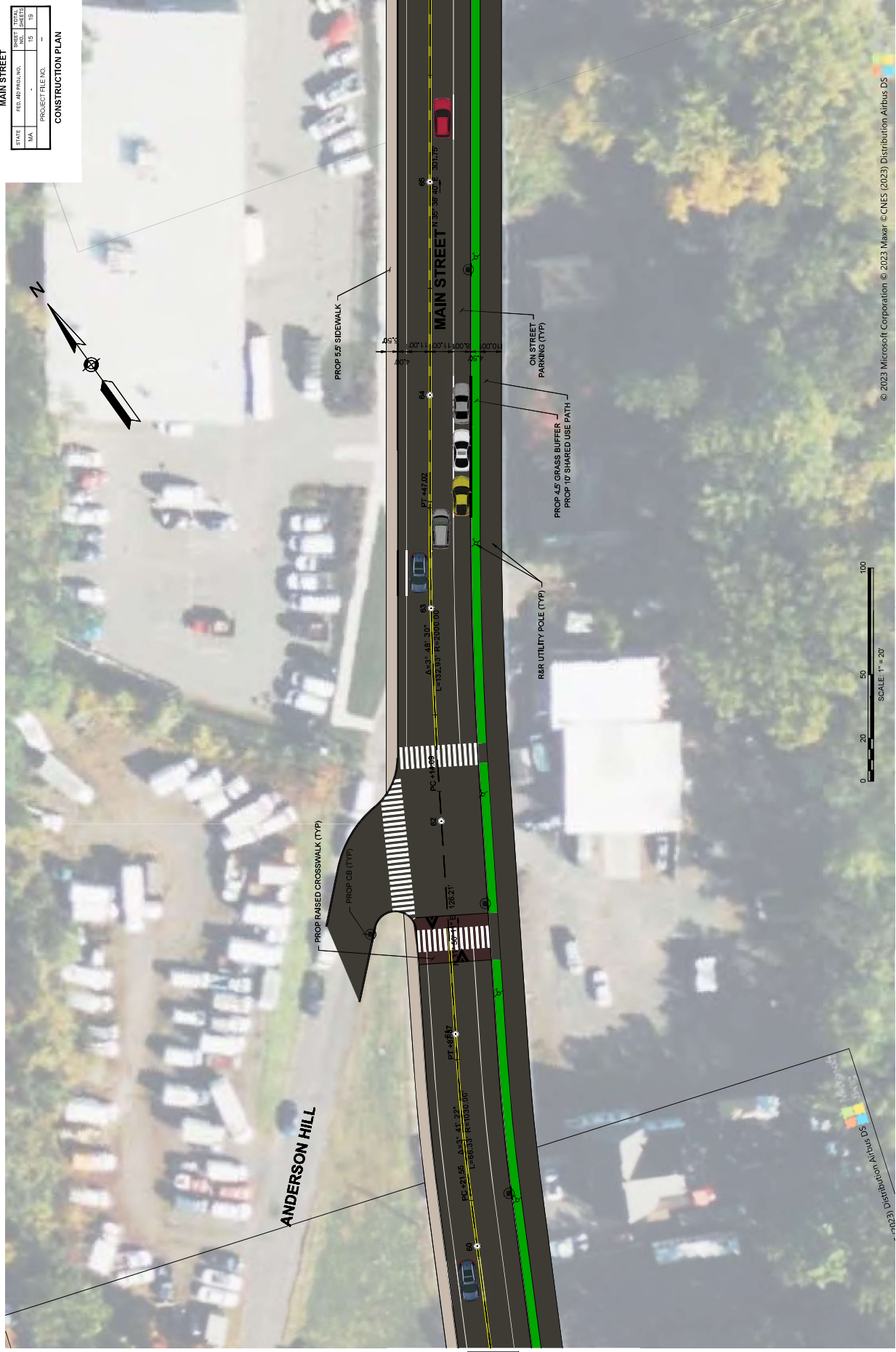
DRAINAGE DETAILS

HOLYOKE  
MAIN STREET

| STATE | REG. PROJ. NO. | NO. | SHEET NO. | TOTAL SHEETS |
|-------|----------------|-----|-----------|--------------|
| MA    | -              | -   | 15        | 15           |

PROJECT FILE NO. - -

CONSTRUCTION PLAN



© 2023 Microsoft Corporation © 2023 Maxar © CNES (2023) Distribution Airbus DS

HIGHWAY GUARD DETAILS

TRAFFIC SIGNAL CONDUIT

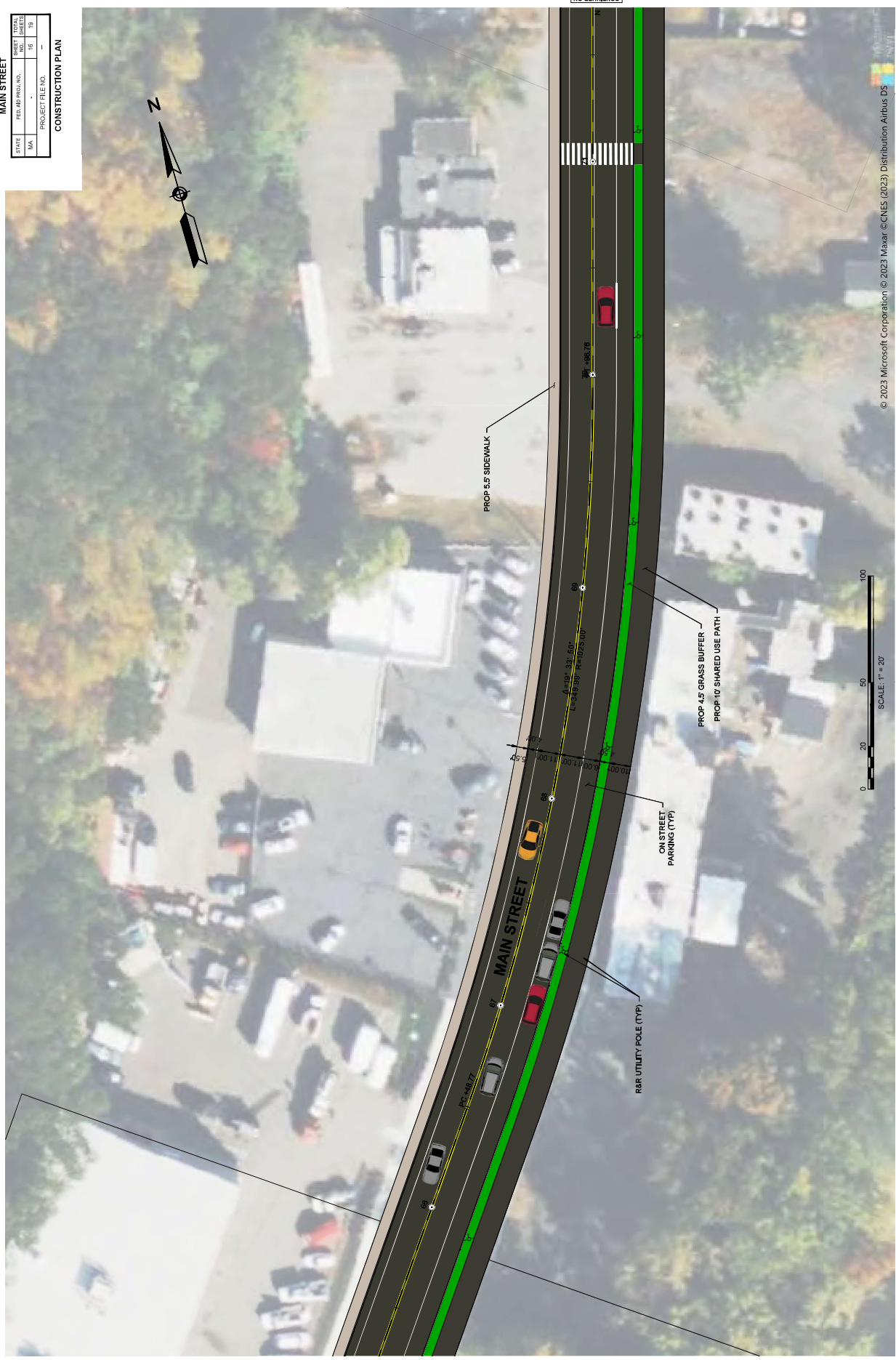
WATER SUPPLY ALTERATIONS

DRAINAGE DETAILS

HOLYOKE  
MAIN STREET  
CONSTRUCTION PLAN

| STATE | REG. PROJ. NO. | NO. | SHEET NO. | TOTAL SHEETS |
|-------|----------------|-----|-----------|--------------|
| MA    | -              | 16  | 15        | -            |

PROJECT FILE NO. -



CONTINUED ON  
SHEET NO. 15

CONTINUED ON  
SHEET NO. 17



HIGHWAY GUARD DETAILS

TRAFFIC SIGNAL CONDUIT

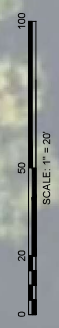
WATER SUPPLY ALTERATIONS

DRAINAGE DETAILS

HOLYOKE  
MAIN STREET

|                  |                |           |              |
|------------------|----------------|-----------|--------------|
| STATE            | REG. PROJ. NO. | SHEET NO. | TOTAL SHEETS |
| MA               | -              | 57        | 115          |
| PROJECT FILE NO. |                | -         |              |

CONSTRUCTION PLAN



© 2023 Microsoft Corporation © 2023 Maxar © CNES (2023) Distribution Airbus DS

CONTINUED ON  
SHEET NO. 18

CONTINUED ON  
SHEET NO. 18

HIGHWAY GUARD DETAILS

TRAFFIC SIGNAL CONDUIT

WATER SUPPLY ALTERATIONS

DRAINAGE DETAILS

HOLYOKE  
MAIN STREET

| STATE            | REG. PROJ. NO. | SHEET NO. | TOTAL SHEETS |
|------------------|----------------|-----------|--------------|
| MA               | -              | 18        | 19           |
| PROJECT FILE NO. |                | -         |              |

CONSTRUCTION PLAN



SHEET NO. 17

SHEET NO. 19



© 2023 Microsoft Corporation © 2023 Maxar © CNES (2023) Distribution Airbus DS



HIGHWAY GUARD DETAILS

TRAFFIC SIGNAL CONDUIT

WATER SUPPLY ALTERATIONS

DRAINAGE DETAILS

HOLYOKE  
MAIN STREET

|                  |                    |                   |           |              |
|------------------|--------------------|-------------------|-----------|--------------|
| STATE            | REG. JOB PROJ. NO. | PROJECT NO.       | SHEET NO. | TOTAL SHEETS |
| MA               | -                  | -                 | 19        | 19           |
| PROJECT FILE NO. |                    | CONSTRUCTION PLAN |           |              |



CONSTRUCTION PLAN  
SHEET NO. 18



Civil Engineering • Transportation Engineering • Structural Engineering • Land Surveying • Green Infrastructure • Planning • GIS  
 2 Center Plaza • Suite 430 • Boston, MA 021108 • 617-338-0063 • Fax 617-338-6472 • E-mail info@nitscheng.com

**Corridor Improvement on Main Street - Springdale Corridor  
 Holyoke, MA**

Date: 4/28/23

**10% Submission**

| Item No. | Description  | Units | Quantity | Average Bid Price* | Estimated Cost |
|----------|--|-------|----------|--------------------|----------------|
| 101.     | CLEARING AND GRUBBING                              | A     | 0.5      | \$35,000.00        | \$ 17,500.00   |
| 102.2*   | TREE TRIMMING                                      | LS    | 1        | \$7,500.00         | \$ 7,500.00    |
| *102.511 | TREE PROTECTION - ARMORING & PRUNING               | EA    | 10       | \$250.00           | \$ 2,500.00    |
| *102.521 | TREE AND PLANT PROTECTION FENCE                    | FT    | 200      | \$10.00            | \$ 2,000.00    |
| 103.     | TREE REMOVED - DIAMETER UNDER 24 INCHES            | EA    | 5        | \$2,000.00         | \$ 10,000.00   |
| 104.     | TREE REMOVED - DIAMETER 24 INCHES AND OVER         | EA    | 1        | \$3,500.00         | \$ 3,500.00    |
| 120.     | EARTH EXCAVATION                                   | CY    | 8,000    | \$40.00            | \$ 320,000.00  |
| 121.     | CLASS A ROCK EXCAVATION                            | CY    | 500      | \$150.00           | \$ 75,000.00   |
| 141.     | CLASS A TRENCH EXCAVATION                          | CY    | 100      | \$60.00            | \$ 6,000.00    |
| 141.1    | TEST PIT FOR EXPLORATION                           | CY    | 200      | \$130.00           | \$ 26,000.00   |
| 142.     | CLASS B TRENCH EXCAVATION                          | CY    | 30       | \$60.00            | \$ 1,800.00    |
| 144.     | CLASS B ROCK EXCAVATION                            | CY    | 10       | \$200.00           | \$ 2,000.00    |
| 146.     | DRAINAGE STRUCTURE REMOVED                         | EA    | 40       | \$900.00           | \$ 36,000.00   |
| 150.     | ORDINARY BORROW                                    | CY    | 200      | \$50.00            | \$ 10,000.00   |
| 151.     | GRAVEL BORROW                                      | CY    | 6,950    | \$50.00            | \$ 347,500.00  |
| 151.2    | GRAVEL BORROW FOR BACKFILLING STRUCTURES AND PIPES | CY    | 500      | \$50.00            | \$ 25,000.00   |
| 156.     | CRUSHED STONE                                      | TON   | 200      | \$60.00            | \$ 12,000.00   |
| 170.     | FINE GRADING AND COMPACTING - SUBGRADE AREA        | SY    | 23,000   | \$7.00             | \$ 161,000.00  |
| *201.    | CATCH BASIN  | EA    | 61       | \$4,500.00         | \$ 274,500.00  |
| 202.     | MANHOLE  | EA    | 20       | \$5,000.00         | \$ 100,000.00  |
| 220.     | DRAINAGE STRUCTURE ADJUSTED                        | EA    | 280      | \$400.00           | \$ 112,000.00  |
| 220.2    | DRAINAGE STRUCTURE REBUILT                         | FT    | 5        | \$700.00           | \$ 3,500.00    |
| 220.3    | DRAINAGE STRUCTURE CHANGE IN TYPE                  | EA    | 10       | \$1,500.00         | \$ 15,000.00   |
| 220.5    | DRAINAGE STRUCTURE REMODELED                       | EA    | 5        | \$750.00           | \$ 3,750.00    |
| 220.7    | SANITARY STRUCTURE ADJUSTED                        | EA    | 80       | \$600.00           | \$ 48,000.00   |
| 221.     | FRAME AND COVER                                    | EA    | 114      | \$900.00           | \$ 102,600.00  |
| 222.1    | FRAME AND GRATE - MASSDOT CASCADE TYPE             | EA    | 62       | \$900.00           | \$ 55,800.00   |
| 223.2    | FRAME AND GRATE (OR COVER) REMOVED AND DISCARDED   | EA    | 136      | \$175.00           | \$ 23,800.00   |
| 224.12   | 12 INCH HOOD                                       | EA    | 61       | \$500.00           | \$ 30,500.00   |
| 227.3    | REMOVAL OF DRAINAGE STRUCTURE SEDIMENT             | CY    | 100      | \$350.00           | \$ 35,000.00   |
| 227.31   | REMOVAL OF DRAINAGE PIPE SEDIMENT                  | FT    | 6,000    | \$11.00            | \$ 66,000.00   |
| 238.12   | 12 INCH DUCTILE IRON PIPE                          | FT    | 200      | \$215.00           | \$ 43,000.00   |
| 241.12   | 12 INCH REINFORCED CONCRETE PIPE CLASS III         | FT    | 1,900    | \$110.00           | \$ 209,000.00  |
| 303.06   | 6 INCH DUCTILE IRON WATER PIPE (MECHANICAL JOINT)  | FT    | 70       | \$200.00           | \$ 14,000.00   |
| 303.12   | 12 INCH DUCTILE IRON WATER PIPE (MECHANICAL JOINT) | FT    | 50       | \$210.00           | \$ 10,500.00   |
| 309.     | DUCTILE IRON FITTINGS FOR WATER PIPE               | LB    | 300      | \$10.00            | \$ 3,000.00    |
| 357.06   | 6 INCH GATE BOX                                    | EA    | 5        | \$735.00           | \$ 3,675.00    |
| 357.12   | 12 INCH GATE BOX                                   | EA    | 5        | \$655.00           | \$ 3,275.00    |
| 358.     | GATE BOX ADJUSTED                                  | EA    | 84       | \$300.00           | \$ 25,200.00   |
| *358.1   | GATE BOX REMOVED AND STACKED                       | EA    | 5        | \$250.00           | \$ 1,250.00    |
| *376.1   | HYDRANT - EXCLUDING COST OF HYDRANT                | EA    | 2        | \$4,000.00         | \$ 8,000.00    |
| *376.3   | HYDRANT - REMOVED AND STACKED                      | EA    | 2        | \$1,575.00         | \$ 3,150.00    |
| 381.     | SERVICE BOX  | EA    | 10       | \$500.00           | \$ 5,000.00    |
| 381.3    | SERVICE BOX ADJUSTED                               | EA    | 20       | \$250.00           | \$ 5,000.00    |
| 384.     | CURB STOP  | EA    | 5        | \$600.00           | \$ 3,000.00    |
| 402.     | DENSE GRADED CRUSHED STONE FOR SUB-BASE            | CY    | 200      | \$85.00            | \$ 17,000.00   |
| 415.1    | PAVEMENT STANDARD MILLING                          | SY    | 31,000   | \$4.00             | \$ 124,000.00  |
| 431.     | HIGH EARLY STRENGTH CEMENT CONCRETE BASE COURSE    | SY    | 1,900    | \$75.00            | \$ 142,500.00  |
| 440.     | CALCIUM CHLORIDE FOR ROADWAY DUST CONTROL          | LB    | 7,000    | \$0.50             | \$ 3,500.00    |
| 443.     | WATER FOR ROADWAY DUST CONTROL                     | MGL   | 7        | \$100.00           | \$ 700.00      |
| 450.23   | SUPERPAVE SURFACE COURSE - 12.5 (SSC-12.5)         | TON   | 3,100    | \$140.00           | \$ 434,000.00  |
| 450.42   | SUPERPAVE BASE COURSE -37.5 (SBC-37.5)             | TON   | 450      | \$150.00           | \$ 67,500.00   |
| 450.52   | SUPERPAVE LEVELING COURSE - 9.5 (SLC - 9.5)        | TON   | 400      | \$215.00           | \$ 86,000.00   |
| 451.     | HMA FOR PATCHING                                   | TON   | 370      | \$200.00           | \$ 74,000.00   |

|          |  |     |         |              |               |
|----------|--|-----|---------|--------------|---------------|
| 452.     | ASPHALT EMULSION FOR TACK COAT   | GAL | 5,800   | \$7.00       | \$ 40,600.00  |
| 453.     | HMA JOINT ADHESIVE   | FT  | 25,600  | \$2.00       | \$ 51,200.00  |
| 472.     | TEMPORARY ASPHALT PATCHING   | TON | 500     | \$200.00     | \$ 100,000.00 |
| 482.5    | SAWCUTTING ASPHALT PAVEMENT FOR BOX WIDENING                             | FT  | 8,000   | \$3.00       | \$ 24,000.00  |
| 506.     | GRANITE CURB TYPE VB - STRAIGHT  | FT  | 4,500   | \$50.00      | \$ 225,000.00 |
| 506.1    | GRANITE CURB TYPE VB - CURVED  | FT  | 2,600   | \$55.00      | \$ 143,000.00 |
| 509.     | GRANITE TRANSITION CURB FOR PEDESTRIAN CURB RAMPS - STRAIGHT             | FT  | 1,420   | \$70.00      | \$ 99,400.00  |
| 509.1    | GRANITE TRANSITION CURB FOR PEDESTRIAN CURB RAMPS - CURVED               | FT  | 1,420   | \$75.00      | \$ 106,500.00 |
| 514.     | GRANITE CURB INLET - STRAIGHT  | EA  | 36      | \$650.00     | \$ 23,075.00  |
| 515.     | GRANITE CURB INLET - CURVED  | EA  | 36      | \$650.00     | \$ 23,075.00  |
| 580.     | CURB REMOVED AND RESET   | FT  | 6,000   | \$30.00      | \$ 180,000.00 |
| 594.     | CURB REMOVED AND DISCARDED   | FT  | 6,000   | \$8.00       | \$ 48,000.00  |
| 595.     | CURB INLET REMOVED AND DISCARDED   | EA  | 41      | \$75.00      | \$ 3,075.00   |
| 645.148  | 48 INCH CHAIN LINK FENCE (PIPE TOP RAIL) VINYL COATED (LINE POST OPTION) | FT  | 500     | \$65.00      | \$ 32,500.00  |
| 652.048  | 48 INCH CHAIN LINK FENCE END POST  | EA  | 6       | \$450.00     | \$ 2,700.00   |
| *657.1   | TEMPORARY PEDESTRIAN MANAGEMENT GUIDANCE SYSTEM                          | FT  | 150     | \$20.00      | \$ 3,000.00   |
| *657.11  | TEMPORARY PEDESTRIAN MANAGEMENT GUIDANCE SYSTEM REMOVED AND RESET        | FT  | 500     | \$10.00      | \$ 5,000.00   |
| 672.     | FENCE GATE AND GATE POSTS REMOVED AND RESET                              | EA  | 10      | \$1,500.00   | \$ 15,000.00  |
| *697.1   | SILT SACK  | EA  | 130     | \$225.00     | \$ 29,250.00  |
| 701.     | CEMENT CONCRETE SIDEWALK   | SY  | 4,650   | \$85.00      | \$ 395,250.00 |
| 701.2    | CEMENT CONCRETE PEDESTRIAN CURB RAMP                                     | SY  | 580     | \$125.00     | \$ 72,500.00  |
| 702.     | HOT MIX ASPHALT SIDEWALK OR DRIVEWAY                                     | TON | 2,600   | \$175.00     | \$ 455,000.00 |
| 710.4    | BOUND - PLAIN GRANITE  | EA  | 10      | \$825.00     | \$ 8,250.00   |
| 715.     | RURAL MAIL BOX REMOVED AND RESET   | EA  | 10      | \$300.00     | \$ 3,000.00   |
| *740.    | ENGINEERS FIELD OFFICE AND EQUIPMENT (TYPE A)                            | MO  | 38      | \$3,000.00   | \$ 114,000.00 |
| 748.     | MOBILIZATION   | LS  | 1       | \$189,365.55 | \$ 189,365.55 |
| 751.1    | LOAM FOR LAWNS   | CY  | 1,940   | \$70.00      | \$ 135,800.00 |
| 765.     | SEEDING  | SY  | 13,600  | \$2.50       | \$ 34,000.00  |
| *824.221 | RECTANGULAR RAPID FLASHING BEACON ASSEMBLY - LOCATION 1                  | LS  | 1       | \$30,000.00  | \$ 30,000.00  |
| *824.222 | RECTANGULAR RAPID FLASHING BEACON ASSEMBLY - LOCATION 2                  | LS  | 1       | \$30,000.00  | \$ 30,000.00  |
| *824.223 | RECTANGULAR RAPID FLASHING BEACON ASSEMBLY - LOCATION 3                  | LS  | 1       | \$30,000.00  | \$ 30,000.00  |
| *826.7   | ELECTRIC SERVICE RISER RELOCATION  | EA  | 15      | \$5,000.00   | \$ 75,000.00  |
| 832.     | WARNING-REGULATORY AND ROUTE MARKER-ALUM. PANEL (TYPE A)                 | SF  | 620     | \$16.00      | \$ 9,920.00   |
| 847.1    | SIGN SUP (N/GUIDE)-RTE MKR W/1 BRKWAY POST ASSEMBLY - STEEL              | EA  | 75      | \$215.00     | \$ 16,125.00  |
| 850.41   | ROADWAY FLAGGER  | HR  | 960     | \$60.00      | \$ 57,600.00  |
| 851.1    | TRAFFIC CONES FOR TRAFFIC MANAGEMENT                                     | DAY | 120     | \$100.00     | \$ 12,000.00  |
| 852.     | SAFETY SIGNING FOR TRAFFIC MANAGEMENT                                    | SF  | 850     | \$20.00      | \$ 17,000.00  |
| *852.11  | TEMPORARY PEDESTRIAN BARRIER   | FT  | 1,000   | \$15.00      | \$ 15,000.00  |
| *852.12  | TEMPORARY PEDESTRIAN CURB RAMP   | EA  | 70      | \$500.00     | \$ 35,000.00  |
| 853.1    | PORTABLE BREAKAWAY BARRICADE TYPE III                                    | EA  | 10      | \$150.00     | \$ 1,500.00   |
| 853.403  | TRUCK MOUNTED ATTENUATOR   | DAY | 1,200   | \$60.00      | \$ 72,000.00  |
| 853.8    | TEMPORARY ILLUMINATION FOR WORK ZONE                                     | DAY | 100     | \$100.00     | \$ 10,000.00  |
| 854.016  | TEMPORARY PAVING MARKINGS - 6 INCH (PAINTED)                             | FT  | 33,200  | \$0.50       | \$ 16,600.00  |
| 854.036  | TEMPORARY PAVING MARKINGS - 6 INCH (TAPE)                                | FT  | 3,300   | \$1.75       | \$ 5,775.00   |
| 854.1    | PAVEMENT MARKING REMOVAL   | SF  | 1,000   | \$2.25       | \$ 2,250.00   |
| 856.     | ARROW BOARD  | DAY | 2,400   | \$15.00      | \$ 36,000.00  |
| 856.12   | PORTABLE CHANGEABLE MESSAGE SIGN   | DAY | 1,900   | \$25.00      | \$ 47,500.00  |
| 859.     | REFLECTORIZED DRUM   | DAY | 180,000 | \$0.30       | \$ 54,000.00  |
| *859.1   | REFLECTORIZED DRUMS WITH SEQUENTIAL FLASHING WARNING LIGHTS              | DAY | 2,400   | \$5.00       | \$ 12,000.00  |
| 864.02   | PAVEMENT ARROW AND LEGENDS - TAPE  | SF  | 60      | \$30.00      | \$ 1,800.00   |
| 864.04   | PAVEMENT ARROWS AND LEGENDS REFLECTORIZED WHITE (THERMOPLASTIC)          | SF  | 60      | \$9.00       | \$ 540.00     |
| 866.106  | 6 INCH REFLECTORIZED WHITE LINE (THERMOPLASTIC)                          | FT  | 16,200  | \$2.00       | \$ 32,400.00  |
| 866.112  | 12 INCH REFLECTORIZED WHITE LINE (THERMOPLASTIC)                         | FT  | 8,500   | \$5.00       | \$ 42,500.00  |
| 867.106  | 6 INCH REFLECTORIZED YELLOW LINE (THERMOPLASTIC)                         | FT  | 16,200  | \$2.00       | \$ 32,400.00  |
| 874.     | STREET NAME SIGN   | EA  | 40      | \$110.00     | \$ 4,400.00   |
| *874.2   | TRAFFIC SIGN REMOVED AND RESET   | EA  | 20      | \$125.00     | \$ 2,500.00   |
| *874.7   | MISCELLANEOUS SIGNS REMOVED AND STACKED                                  | EA  | 30      | \$40.00      | \$ 1,200.00   |
| *874.8   | MISCELLANEOUS SIGNS REMOVED AND RESET                                    | EA  | 25      | \$500.00     | \$ 12,500.00  |
| 903.     | 3000 PSI, 1.5 INCH, 470 CEMENT CONCRETE                                  | CY  | 5       | \$500.00     | \$ 2,500.00   |

**SUBTOTAL \$ 6,501,550.55**

Traffic Police (5.5%)= \$ 357,585.28

Construction Contingency (10%)= \$ 650,155.06

Utility Relocation Cost (65 Poles \*\$15k/EA)= \$ 975,000.00

**TOTAL \$ 8,484,290.89**

**SAY \$ 8,500,000.00**

\*Unit prices based on MassDOT Average April-2023