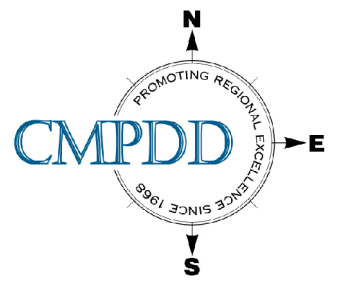


City of Jackson

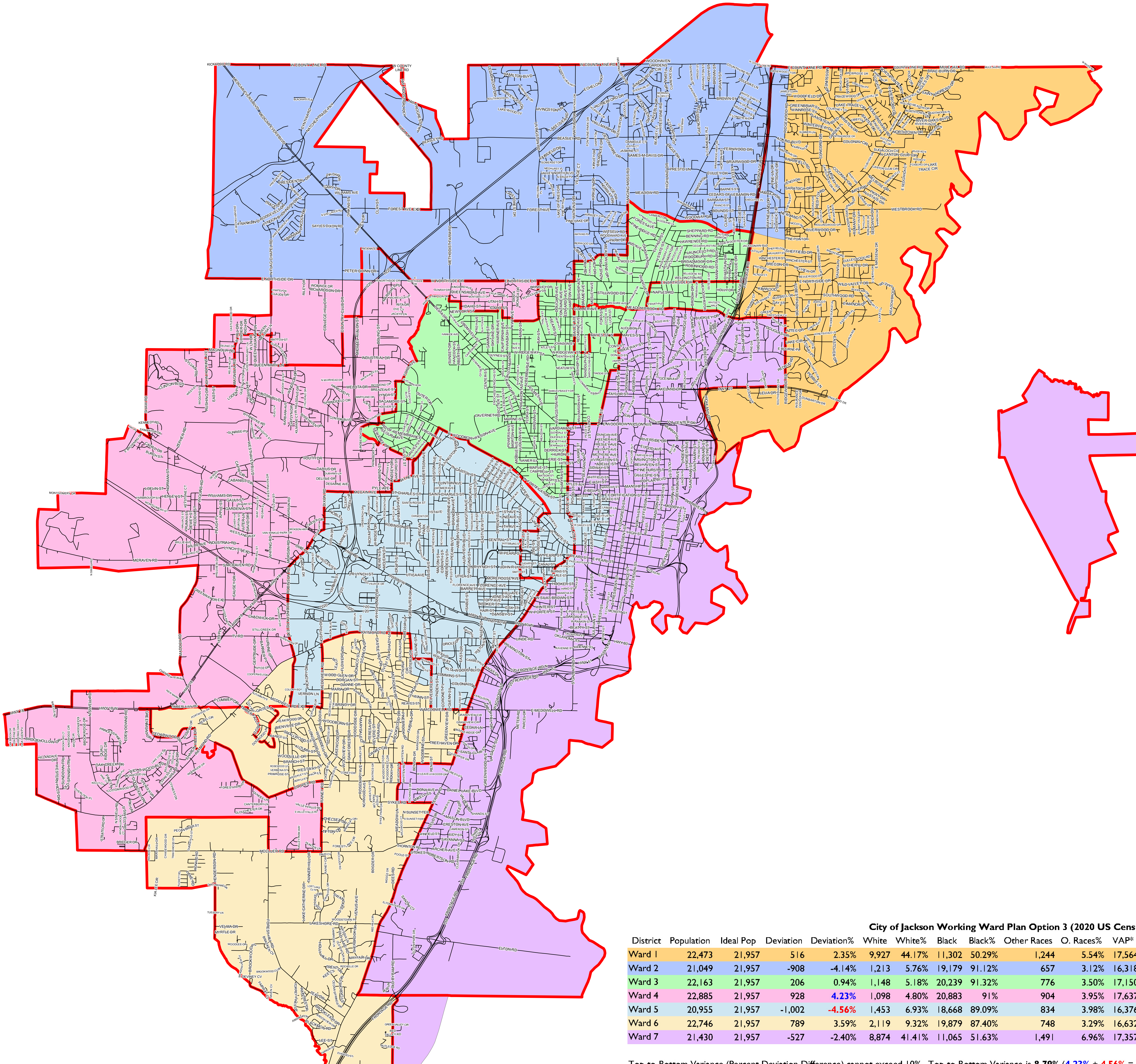
Working Ward Plan

Option 3

June 3, 2024



Total Population: 153,701
Ideal Population Per District: 21,957



Working Option 3

- Ward 1
- Ward 2
- Ward 3
- Ward 4
- Ward 5
- Ward 6
- Ward 7
- Existing Wards

City of Jackson Working Ward Plan Option 3 (2020 US Census Demographics)

District	Population	Ideal Pop	Deviation	Deviation%	White	White%	Black	Black%	Other Races	O. Races%	VAP*	WH. VAP	WH. VAP%	BL VAP	BL VAP%	O. Races VAP	O. Races VAP%
Ward 1	22,473	21,957	516	2.35%	9,927	44.17%	11,302	50.29%	1,244	5.54%	17,564	8,309	47.31%	8,344	47.51%	911	5.19%
Ward 2	21,049	21,957	-908	-4.14%	1,213	5.76%	19,179	91.12%	657	3.12%	16,318	1,111	6.81%	14,712	90.16%	495	3.03%
Ward 3	22,163	21,957	206	0.94%	1,148	5.18%	20,239	91.32%	776	3.50%	17,150	1,038	6.05%	15,532	90.57%	580	3.38%
Ward 4	22,885	21,957	928	4.23%	1,098	4.80%	20,883	91%	904	3.95%	17,637	992	5.62%	16,000	90.72%	645	3.66%
Ward 5	20,955	21,957	-1,002	-4.56%	1,453	6.93%	18,668	89.09%	834	3.98%	16,376	1,374	8.39%	14,366	87.73%	636	3.88%
Ward 6	22,746	21,957	789	3.59%	2,119	9.32%	19,879	87.40%	748	3.29%	16,632	1,937	11.65%	14,194	85.34%	501	3.01%
Ward 7	21,430	21,957	-527	-2.40%	8,874	41.41%	11,065	51.63%	1,491	6.96%	17,357	7,868	45.33%	8,315	47.91%	1,174	6.76%

Top-to-Bottom Variance (Percent Deviation Difference) cannot exceed 10%. Top-to-Bottom Variance is 8.79% (4.23% + 4.56% = 8.79%). *VAP: Voter Age Population