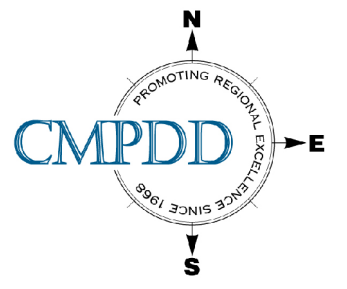


City of Jackson

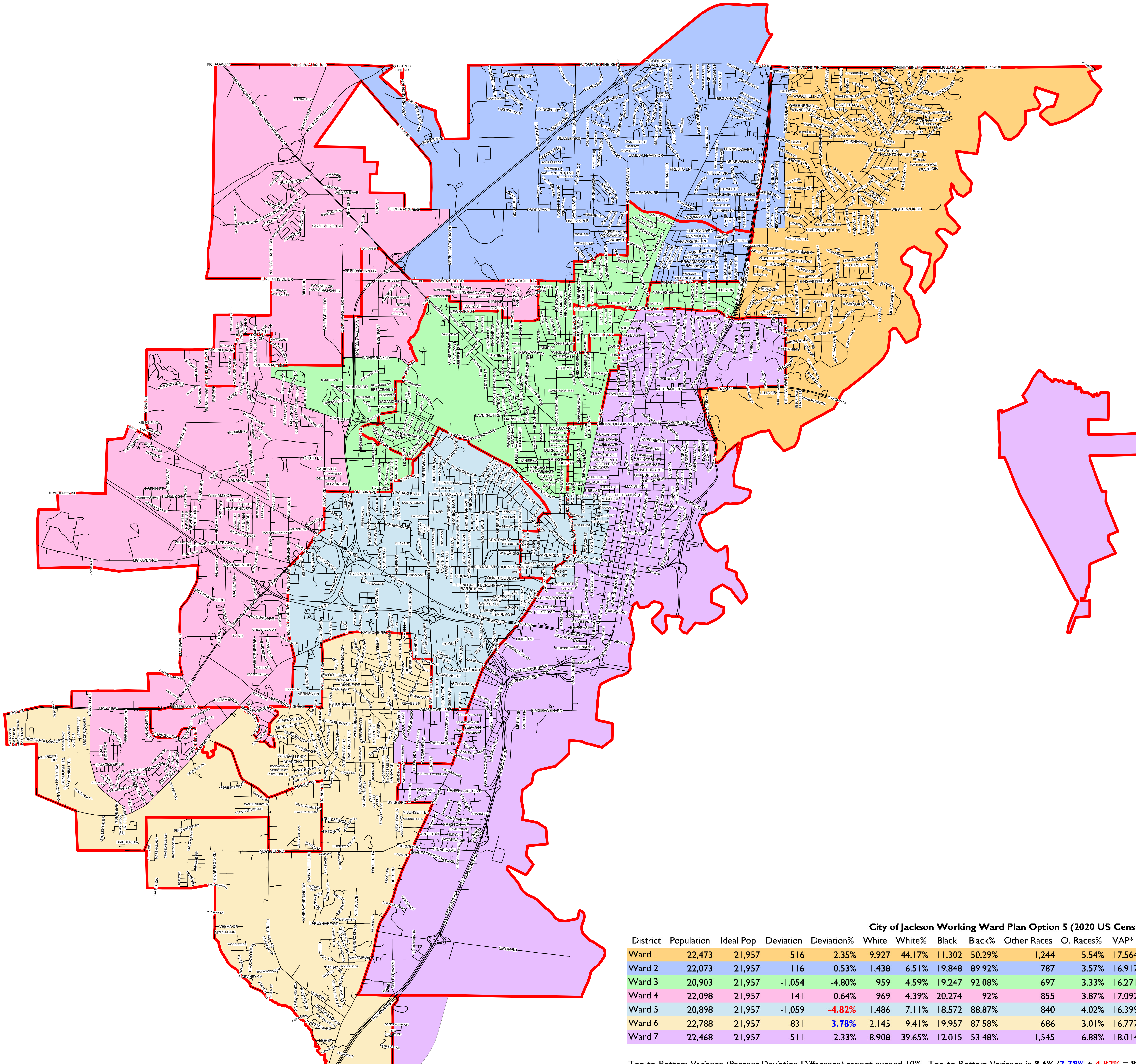
Working Ward Plan

Option 5

June 3, 2024



Total Population: 153,701
Ideal Population Per District: 21,957



Working Option 5

- Ward 1
- Ward 2
- Ward 3
- Ward 4
- Ward 5
- Ward 6
- Ward 7
- Existing Wards

City of Jackson Working Ward Plan Option 5 (2020 US Census Demographics)

District	Population	Ideal Pop	Deviation	Deviation%	White	White%	Black	Black%	Other Races	O. Races%	VAP*	WH. VAP	WH. VAP%	BL VAP	BL. VAP%	O. Races VAP	O. Races VAP%
Ward 1	22,473	21,957	516	2.35%	9,927	44.17%	11,302	50.29%	1,244	5.54%	17,564	8,309	47.31%	8,344	47.51%	911	5.19%
Ward 2	22,073	21,957	116	0.53%	1,438	6.51%	19,848	89.92%	787	3.57%	16,917	1,307	7.73%	15,022	88.80%	588	3.48%
Ward 3	20,903	21,957	-1,054	-4.80%	959	4.59%	19,247	92.08%	697	3.33%	16,271	878	5.40%	14,860	91.33%	533	3.28%
Ward 4	22,098	21,957	141	0.64%	969	4.39%	20,274	92%	855	3.87%	17,092	885	5.18%	15,602	91.28%	605	3.54%
Ward 5	20,898	21,957	-1,059	-4.82%	1,486	7.11%	18,572	88.87%	840	4.02%	16,399	1,410	8.60%	14,351	87.51%	638	3.89%
Ward 6	22,788	21,957	831	3.78%	2,145	9.41%	19,957	87.58%	686	3.01%	16,777	1,940	11.56%	14,372	85.66%	465	2.77%
Ward 7	22,468	21,957	511	2.33%	8,908	39.65%	12,015	53.48%	1,545	6.88%	18,014	7,900	43.85%	8,912	49.47%	1,202	6.67%

Top-to-Bottom Variance (Percent Deviation Difference) cannot exceed 10%. Top-to-Bottom Variance is 8.6% (3.78% + 4.82% = 8.6%). *VAP: Voter Age Population