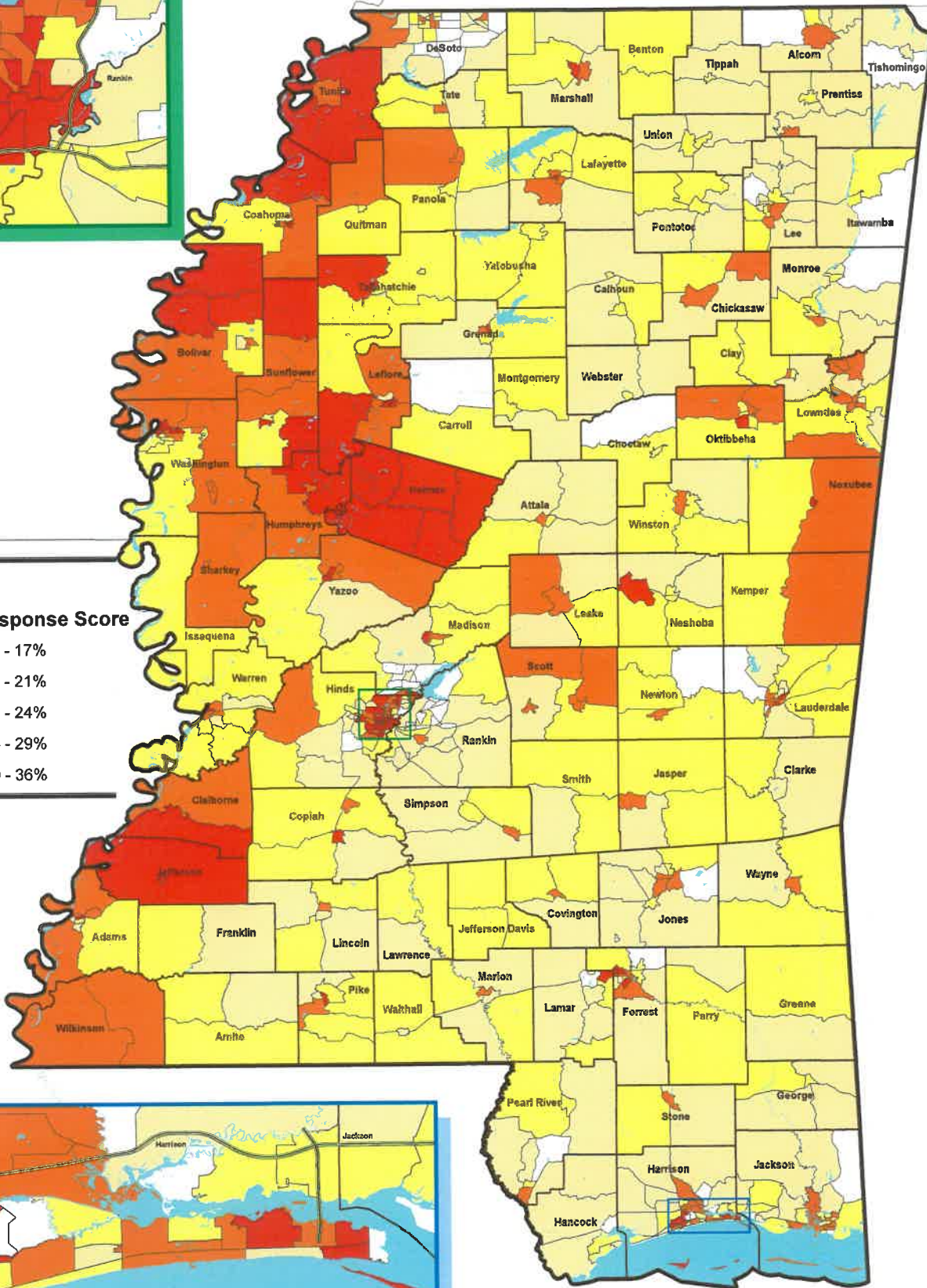
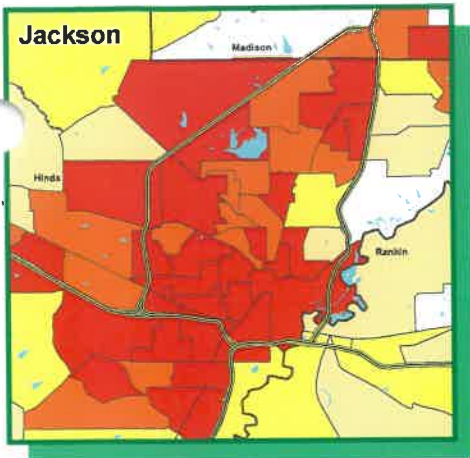
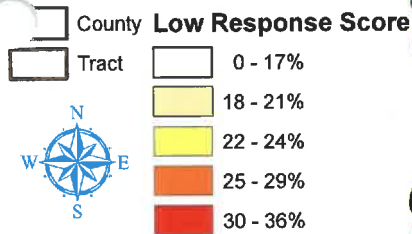


Mississippi - Census Low Response Score* By Census Tract

*The Census Low Response Score (LRS) is a continuous score that predicts whether a tract will produce a low response rate. The score for a tract is inversely related to the mail return rate from the 2010 Census for that tract. Therefore, the people living in tracts with a lower LRS are more likely to respond to 2020 Census than those with a higher LRS.

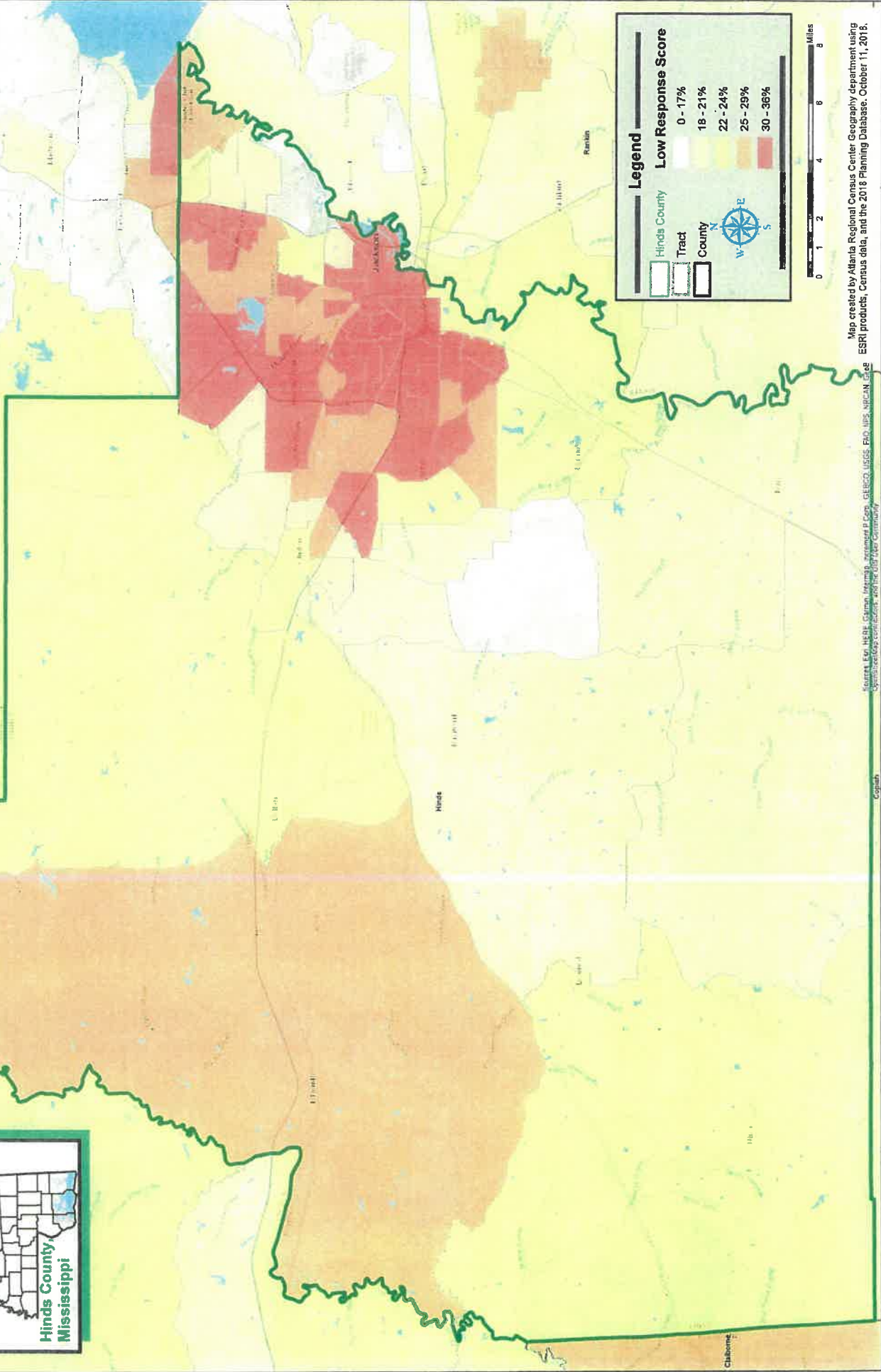


Legend



Hinds County, MS Census Low Response Score* By Census Tract

*The Census Low Response Score (LRS) is a continuous score that predicts whether a tract will produce a low response rate. The score for a tract is inversely related to the mail return rate from the 2010 Census for that tract. Therefore, the people living in tracts with a lower LRS are more likely to respond to 2020 Census than those with a higher LRS.



Legend

Hinds County

Tract

County

Low Response Score

0 - 17%
18 - 21%
22 - 24%
25 - 29%
30 - 36%

Scale: 0 1 2 4 8 Miles

Compass rose showing North (N), South (S), East (E), and West (W).

Map created by Atlanta Regional Census Center Geography department using ESRI products, Census data, and the 2018 Planning Database, October 11, 2018.