



**AGENDA ITEM REQUEST FORM  
CITY OF JOHNSON CITY, TEXAS  
CITY COUNCIL**

**ITEM NO. 5**

**MEETING DATE:**           **April 30, 2021**

**AGENDA PLACEMENT:**

- Ceremonial
- Consent
- Individual
- Closed Session

**CAPTION:**

Discussion of and action on a Resolution of the City Council of the City of Johnson City, Texas authorizing the appropriation of Interest & Sinking Funds for the replacement of three (3) Police Department vehicles and the purchase of the same through Ford Credit Municipal Finance in the maximum annual amount of Thirty-Eight Thousand Seven Hundred Forty Dollars and Twenty-two Cents (\$38,740.22) for a term of five (5) years; authorizing the Chief Administrative Officer / City Secretary to take all necessary steps to implement the provisions of this Resolution, including, but not limited to, the execution of related documents; incorporating recitals; providing for severability; and adopting an effective date. (Staff)

**EXECUTIVE SUMMARY:**

The City of Johnson City Police Department maintains the following fleet vehicles:

<b>Vehicle Year</b>	<b>Make / Model</b>	<b>Mileage</b>	<b>Notes</b>
2005	Ford Crown Vic	122,000	To be auctioned.
2007	Dodge Charger	Unknown	To be auctioned.
2011	Chevrolet Tahoe	153,275	To be replaced / auctioned.
2012	Dodge Charger	101,518	To be replaced / auctioned.
2012	Dodge Charger	83,264	To be replaced / auctioned.
2016	Ford Explorer	29,648	Remains.
2019	Dodge Charger	14,580	Remains.

City Staff proposes to auction all Police Department vehicles with years 2005 – 2012 and replace said vehicles with three (3) new 2021 Ford Police Interceptor Utility equipped vehicles. Caldwell

Country Ford is a BuyBoard vendor with active Contract No. 601-19 for police interceptor vehicles. No Historically Underutilized Businesses (HUBs) were identified in Blanco County.

**FINANCIAL:**

Each vehicle is expected to cost \$57,632.18. Ford Credit Municipal Finance offers Texas cities with lease-purchase contract options from 3 to 5-year repayment plans. At the conclusion of the lease, the City purchases the vehicle for \$1.00. Lease-purchase contracts are expressly authorized by Texas Local Government Code Section 271.005 *Authority to Contract for Personal Property*.

Total Asset Cost	\$172,896.55
Underwriting Fee	\$545.00
Amount Financed	\$173,441.55
Number of Payments	5
Payment Timing	Annual
Rate	5.85%
Payment Amount	\$38,740.22

Fund No. 4 *Interest & Sinking* holds an unencumbered balance of \$47,344.50 in Line Item No. 04-176-6321 *Miscellaneous*. City Staff proposes to fund Year One and subsequent year payments from said Fund.

**ATTACHMENTS:**

- Proposed Resolution No. R21-061
- Ford Credit Municipal Finance Flier
- Ford Police Interceptor Flier
- Caldwell Country Ford BuyBoard Contract No. 601-19
- Caldwell Country Ford Quote w/ Upfitting
- Ford Credit Municipal Finance Equipment Lease-Purchase Application and Schedule
- Fund No. 4 *Interest & Sinking* Revenue / Expense Report
- TLGC Sec. 271.005 *Authority to Contract for Personal Property*

**SUGGESTED ACTION:**

Motion to approve a Resolution of the City Council of the City of Johnson City, Texas authorizing the appropriation of Interest & Sinking Funds for the replacement of three (3) Police Department vehicles and the purchase of the same through Ford Credit Municipal Finance in the maximum annual amount of Thirty-Eight Thousand Seven Hundred Forty Dollars and Twenty-two Cents (\$38,740.22) for a term of five (5) years; authorizing the Chief Administrative Officer / City Secretary to take all necessary steps to implement the provisions of this Resolution, including, but not limited to, the execution of related documents; incorporating recitals; providing for severability; and adopting an effective date.

**PREPARED BY:** CAO/City Secretary Rick Schroder

**RESOLUTION NO. R21-061**

**A RESOLUTION OF THE CITY COUNCIL OF THE CITY OF JOHNSON CITY, TEXAS AUTHORIZING THE APPROPRIATION OF INTEREST & SINKING FUNDS FOR THE REPLACEMENT OF THREE (3) POLICE DEPARTMENT VEHICLES AND THE PURCHASE OF THE SAME THROUGH FORD CREDIT MUNICIPAL FINANCE IN THE MAXIMUM ANNUAL AMOUNT OF THIRTY-EIGHT THOUSAND SEVEN HUNDRED FORTY DOLLARS AND TWENTY-TWO CENTS (\$38,740.22) FOR A TERM OF FIVE (5) YEARS; AUTHORIZING THE CHIEF ADMINISTRATIVE OFFICER / CITY SECRETARY TO TAKE ALL NECESSARY STEPS TO IMPLEMENT THE PROVISIONS OF THIS RESOLUTION, INCLUDING, BUT NOT LIMITED TO, THE EXECUTION OF RELATED DOCUMENTS; INCORPORATING RECITALS; PROVIDING FOR SEVERABILITY; AND ADOPTING AN EFFECTIVE DATE.**

**WHEREAS**, the City Council of the City of Johnson City, Texas desires to replace three (3) existing Police Department vehicles due to age, high mileage, and mechanical failures; and

**WHEREAS**, Ford Credit Municipal Finance provides Texas cities with lease-purchase contract options for the replacement of municipal fleet vehicles, as authorized by Texas Local Government Code Section 271.005 *Authority to Contract for Personal Property*; and

**WHEREAS**, City Staff proposes to purchase said vehicles through Caldwell Country Ford, a dealership with active BuyBoard Contract No. 601-19 for police interceptor vehicles; and

**WHEREAS**, City Staff proposes to appropriate funds for said purchase through the Interest & Sinking Fund.

**NOW, THEREFORE, BE IT RESOLVED by the City Council of the City of Johnson City, Texas that:**

**Section One. Approval.** The City Council hereby authorizes the appropriation of Interest & Sinking Funds for the replacement of three (3) Police Department vehicles and the purchase of the same through Ford Credit Municipal Finance in the maximum annual amount of \$38,740.22 for a term of 5 years.

**Section Two. Authorization.** The City Council of the City of Johnson City authorizes the Chief Administrative Officer / City Secretary to take all necessary steps to implement the provisions of this Resolution, including, but not limited to, the execution of related documents.

**Section Three. Findings.** The City Council finds all of the above recitals to be true and correct and incorporates the same in this Resolution as findings of fact.

**Section Four. Severability.** If any section, subsection, sentence, clause, or phrase of this Resolution is for any reason held to be unconstitutional or illegal, such decision shall not affect the validity of the remaining sections of this Resolution. The City Council hereby declares that it would have passed this Resolution, and each section, subsection, clause, or phrase thereof, irrespective of the fact that any one or more sections, subsections, sentences, clauses, or phrases be declared void.

**Section Five. Effective Date.** This Resolution shall be effective immediately upon the approval of the City Council.

**PASSED AND APPROVED this 30<sup>th</sup> day of April 2021.**

---

Rhonda Stell, Mayor  
City of Johnson City, Texas

**ATTEST:**

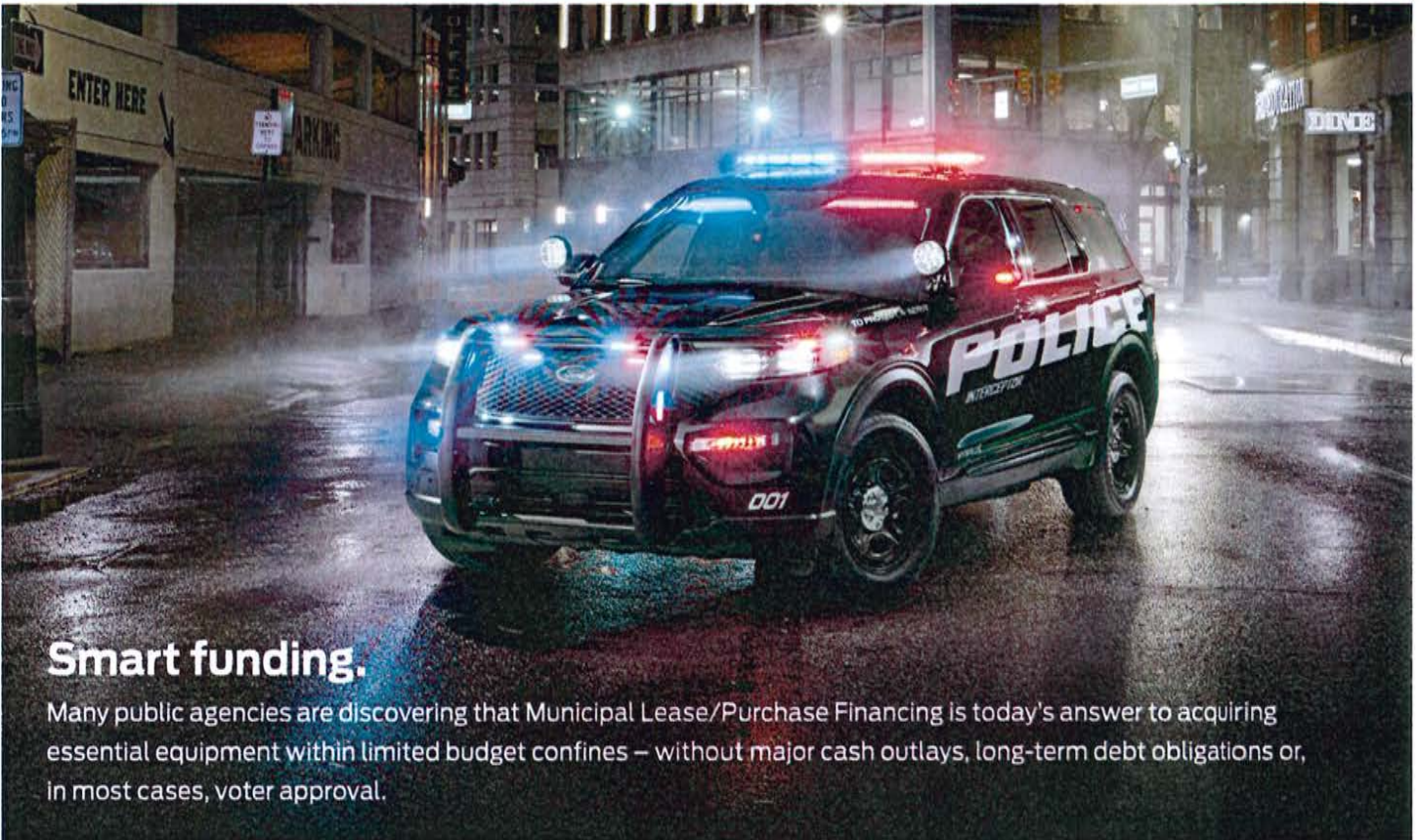
---

Rick A. Schroder, City Secretary  
City of Johnson City, Texas



FORD CREDIT

## Municipal Finance



### Smart funding.

Many public agencies are discovering that Municipal Lease/Purchase Financing is today's answer to acquiring essential equipment within limited budget confines – without major cash outlays, long-term debt obligations or, in most cases, voter approval.

### Here's how it works.

- Fixed-rate financing helps you get the vehicles you need when you need them, while sticking to your current budget
- Flexible repayment terms – monthly, quarterly, semiannual and annual
- Finance add-on equipment, upfits and extended-warranty plans
- Equity is accumulated with each payment, and ownership is realized with a final payment of \$1



### For your benefit.

- Avoid high costs of maintaining older equipment
- Tax-exempt interest rates
- No down payment or security deposit required
- No mileage restrictions
- No maintenance or return provisions
- Access to the latest technologies

Ford Motor Credit Company ("FMCC") is providing the information contained in this document for discussion purposes only in connection with a proposed arm's-length commercial leasing transaction between you and FMCC. FMCC is acting for its own interest and has financial and other interests that differ from yours. FMCC is not acting as a municipal advisor or financial advisor to you, and has no fiduciary duty to you. The information provided in this document is not intended to be and should not be construed as "advice" within the meaning of Section 15B of the Securities Exchange Act of 1934 and the municipal advisor rules of the SEC. FMCC is not recommending that you take an action, and you should discuss any actions with your own advisors as you deem appropriate.



FORD CREDIT

## Benefits you can see. Municipal Finance Program



### How much equipment can you get for \$150,000?\*

#### Option A – Purchase Today for Cash

---



#### Option B – Ford Credit Municipal Lease/Purchase Financing

---



### We're here for you. Just call 1-800-241-4199.

If you have any questions, call and speak to a Ford Credit Municipal Financing coordinator.  
We offer flexible terms and let you maximize your tax-exempt advantages.

We're a team ready to move fast to meet your vehicle financing needs.  
Visit us online at [ford.com/finance/commercial-financing/municipal](http://ford.com/finance/commercial-financing/municipal).

\*Based on the assumption that you could purchase Option A for \$150,000.00 from your annual budget, and you could lease/purchase Option B with total vehicle and optional equipment cost of \$375,000.00 at 7% APR, resulting in 4 annual payments of \$103,563.93. This is an example and rates are subject to change. Funding subject to credit approval.

**2021**

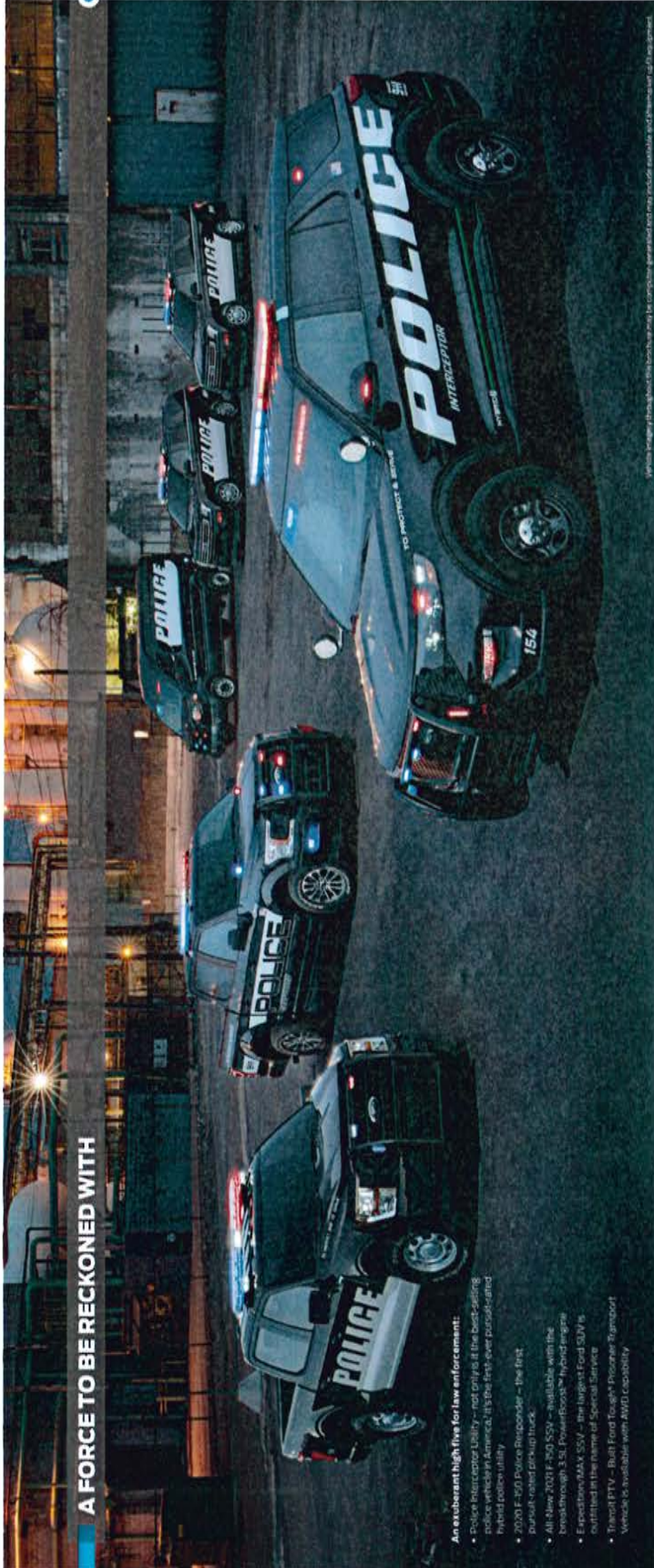
**POLICE & SPECIAL SERVICE VEHICLES**



| **FORD FLEET**



## A FORCE TO BE RECKONED WITH



### An exuberant high five for law enforcement:

- Police Interceptor Utility – not only is it the best-selling police vehicle in America, it's the first-ever purpose-built hybrid police utility
- 2020 F-350 Police Responder – the first pursuit-rated pickup truck
- All-new 2021 F-350 SSV – available with the breakthrough 3.5L PowerBoost™ hybrid engine
- Expedition MAX SSV – the largest Ford SUV is outfitted in the name of Special Service
- Tower PTV – Built Ford Tough Proximity Response Vehicle is available with AWD capability

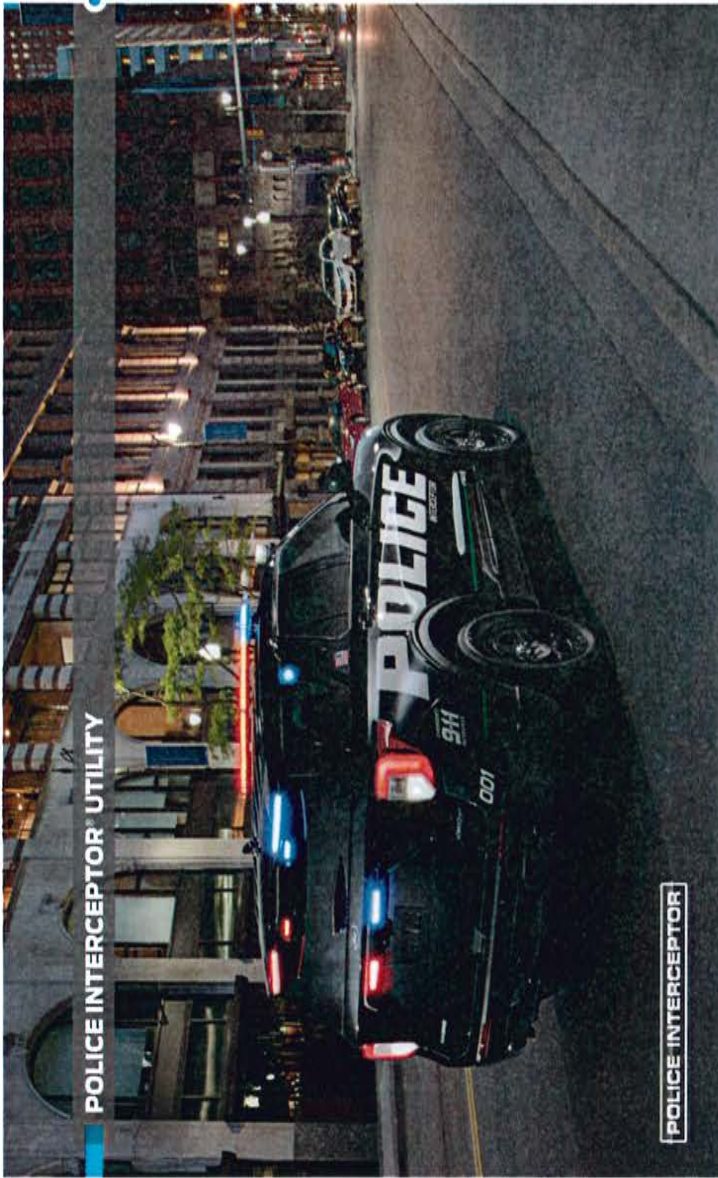
## TABLE OF CONTENTS

<b>FULL POLICE LINEUP</b>	
Police Interceptor Utility	2
Hybrid Equipped Choculiner	3
12.1" Integrated Computer Screen	4
Police Perimeter Alert	8
Ford Telematics™ for Law Enforcement	10
F-350® Police Responder <sup>1</sup>	12
Special Service Vehicles	14
All-New 2021 F-350 SSV	16
Expedition MAX SSV	17
Tower PTV	18
Supporting Vehicles	19
<b>VEHICLE UTILITIES</b>	
Safety & Security	20
Heavy-Duty Durability	22
Total Performance	24
Purpose-Built	26
Light-Friendly	28
<b>DETAILED VEHICLE SPECS</b>	
Police Interceptor Utility	30
F-350 Police Responder	34
F-350 SSV	36
Expedition MAX SSV	38
Tower PTV	40
<b>LIGHT SOLUTIONS &amp; OPTIONAL FEATURES</b>	
Police Interceptor Utility Lighting Solutions	42
Factory-Installed Light Packages	44
Smart Factory-Installed Light Options	46
Wheel of Service Center (W2S) Product Lighting & Equipment	47
<b>CUSTOMER SERVICES</b>	
Essential Resources	48
Elite Police Advisory Board (EPAB)	49

©2020 Ford Motor Company. All rights reserved. Ford, Ford Police, and Ford Police Interceptor are trademarks of Ford Motor Company.



## POLICE INTERCEPT® UTILITY



**POLICE INTERCEPT**

2. Model shown with Police Interceptor Utility. MSRP includes destination charge and delivery. <sup>1</sup>MSRP includes dealer prep, tax, license, title, and optional equipment. <sup>2</sup>MSRP includes destination charge, delivery, and other options. <sup>3</sup>MSRP includes dealer prep, tax, license, title, and optional equipment. <sup>4</sup>MSRP includes destination charge, delivery, and other options. <sup>5</sup>MSRP includes dealer prep, tax, license, title, and optional equipment. <sup>6</sup>MSRP includes destination charge, delivery, and other options. <sup>7</sup>MSRP includes dealer prep, tax, license, title, and optional equipment. <sup>8</sup>MSRP includes destination charge, delivery, and other options. <sup>9</sup>MSRP includes dealer prep, tax, license, title, and optional equipment. <sup>10</sup>MSRP includes destination charge, delivery, and other options. <sup>11</sup>MSRP includes dealer prep, tax, license, title, and optional equipment. <sup>12</sup>MSRP includes destination charge, delivery, and other options. <sup>13</sup>MSRP includes dealer prep, tax, license, title, and optional equipment. <sup>14</sup>MSRP includes destination charge, delivery, and other options. <sup>15</sup>MSRP includes dealer prep, tax, license, title, and optional equipment. <sup>16</sup>MSRP includes destination charge, delivery, and other options. <sup>17</sup>MSRP includes dealer prep, tax, license, title, and optional equipment. <sup>18</sup>MSRP includes destination charge, delivery, and other options. <sup>19</sup>MSRP includes dealer prep, tax, license, title, and optional equipment. <sup>20</sup>MSRP includes destination charge, delivery, and other options. <sup>21</sup>MSRP includes dealer prep, tax, license, title, and optional equipment. <sup>22</sup>MSRP includes destination charge, delivery, and other options. <sup>23</sup>MSRP includes dealer prep, tax, license, title, and optional equipment. <sup>24</sup>MSRP includes destination charge, delivery, and other options. <sup>25</sup>MSRP includes dealer prep, tax, license, title, and optional equipment. <sup>26</sup>MSRP includes destination charge, delivery, and other options. <sup>27</sup>MSRP includes dealer prep, tax, license, title, and optional equipment. <sup>28</sup>MSRP includes destination charge, delivery, and other options. <sup>29</sup>MSRP includes dealer prep, tax, license, title, and optional equipment. <sup>30</sup>MSRP includes destination charge, delivery, and other options. <sup>31</sup>MSRP includes dealer prep, tax, license, title, and optional equipment. <sup>32</sup>MSRP includes destination charge, delivery, and other options. <sup>33</sup>MSRP includes dealer prep, tax, license, title, and optional equipment. <sup>34</sup>MSRP includes destination charge, delivery, and other options. <sup>35</sup>MSRP includes dealer prep, tax, license, title, and optional equipment. <sup>36</sup>MSRP includes destination charge, delivery, and other options. <sup>37</sup>MSRP includes dealer prep, tax, license, title, and optional equipment. <sup>38</sup>MSRP includes destination charge, delivery, and other options. <sup>39</sup>MSRP includes dealer prep, tax, license, title, and optional equipment. <sup>40</sup>MSRP includes destination charge, delivery, and other options. <sup>41</sup>MSRP includes dealer prep, tax, license, title, and optional equipment. <sup>42</sup>MSRP includes destination charge, delivery, and other options. <sup>43</sup>MSRP includes dealer prep, tax, license, title, and optional equipment. <sup>44</sup>MSRP includes destination charge, delivery, and other options. <sup>45</sup>MSRP includes dealer prep, tax, license, title, and optional equipment. <sup>46</sup>MSRP includes destination charge, delivery, and other options. <sup>47</sup>MSRP includes dealer prep, tax, license, title, and optional equipment. <sup>48</sup>MSRP includes destination charge, delivery, and other options. <sup>49</sup>MSRP includes dealer prep, tax, license, title, and optional equipment. <sup>50</sup>MSRP includes destination charge, delivery, and other options. <sup>51</sup>MSRP includes dealer prep, tax, license, title, and optional equipment. <sup>52</sup>MSRP includes destination charge, delivery, and other options. <sup>53</sup>MSRP includes dealer prep, tax, license, title, and optional equipment. <sup>54</sup>MSRP includes destination charge, delivery, and other options. <sup>55</sup>MSRP includes dealer prep, tax, license, title, and optional equipment. <sup>56</sup>MSRP includes destination charge, delivery, and other options. <sup>57</sup>MSRP includes dealer prep, tax, license, title, and optional equipment. <sup>58</sup>MSRP includes destination charge, delivery, and other options. <sup>59</sup>MSRP includes dealer prep, tax, license, title, and optional equipment. <sup>60</sup>MSRP includes destination charge, delivery, and other options. <sup>61</sup>MSRP includes dealer prep, tax, license, title, and optional equipment. <sup>62</sup>MSRP includes destination charge, delivery, and other options. <sup>63</sup>MSRP includes dealer prep, tax, license, title, and optional equipment. <sup>64</sup>MSRP includes destination charge, delivery, and other options. <sup>65</sup>MSRP includes dealer prep, tax, license, title, and optional equipment. <sup>66</sup>MSRP includes destination charge, delivery, and other options. <sup>67</sup>MSRP includes dealer prep, tax, license, title, and optional equipment. <sup>68</sup>MSRP includes destination charge, delivery, and other options. <sup>69</sup>MSRP includes dealer prep, tax, license, title, and optional equipment. <sup>70</sup>MSRP includes destination charge, delivery, and other options. <sup>71</sup>MSRP includes dealer prep, tax, license, title, and optional equipment. <sup>72</sup>MSRP includes destination charge, delivery, and other options. <sup>73</sup>MSRP includes dealer prep, tax, license, title, and optional equipment. <sup>74</sup>MSRP includes destination charge, delivery, and other options. <sup>75</sup>MSRP includes dealer prep, tax, license, title, and optional equipment. <sup>76</sup>MSRP includes destination charge, delivery, and other options. <sup>77</sup>MSRP includes dealer prep, tax, license, title, and optional equipment. <sup>78</sup>MSRP includes destination charge, delivery, and other options. <sup>79</sup>MSRP includes dealer prep, tax, license, title, and optional equipment. <sup>80</sup>MSRP includes destination charge, delivery, and other options. <sup>81</sup>MSRP includes dealer prep, tax, license, title, and optional equipment. <sup>82</sup>MSRP includes destination charge, delivery, and other options. <sup>83</sup>MSRP includes dealer prep, tax, license, title, and optional equipment. <sup>84</sup>MSRP includes destination charge, delivery, and other options. <sup>85</sup>MSRP includes dealer prep, tax, license, title, and optional equipment. <sup>86</sup>MSRP includes destination charge, delivery, and other options. <sup>87</sup>MSRP includes dealer prep, tax, license, title, and optional equipment. <sup>88</sup>MSRP includes destination charge, delivery, and other options. <sup>89</sup>MSRP includes dealer prep, tax, license, title, and optional equipment. <sup>90</sup>MSRP includes destination charge, delivery, and other options. <sup>91</sup>MSRP includes dealer prep, tax, license, title, and optional equipment. <sup>92</sup>MSRP includes destination charge, delivery, and other options. <sup>93</sup>MSRP includes dealer prep, tax, license, title, and optional equipment. <sup>94</sup>MSRP includes destination charge, delivery, and other options. <sup>95</sup>MSRP includes dealer prep, tax, license, title, and optional equipment. <sup>96</sup>MSRP includes destination charge, delivery, and other options. <sup>97</sup>MSRP includes dealer prep, tax, license, title, and optional equipment. <sup>98</sup>MSRP includes destination charge, delivery, and other options. <sup>99</sup>MSRP includes dealer prep, tax, license, title, and optional equipment. <sup>100</sup>MSRP includes destination charge, delivery, and other options.

## NO-TRADE-OFFS HYBRID – STANDARD

The Ford Police Interceptor Utility is the first-ever consult-rated hybrid SUV. Fortified with standard full-time Intelligent AWD, an amazing 3.1L V6 hybrid engine and a 10-speed transmission, it outperformed all police utility competitors – including V8-equipped models – that participated in official testing.<sup>1</sup> Acceleration figures, lap times and top-speed numbers were tallied during rigorous evaluations conducted by the Michigan State Police and Los Angeles County Sheriff's Department.<sup>2</sup>

Potential fuel savings:<sup>3</sup> The hybrid powertrain offers significant potential reductions in fuel use when decreased engine idle times and an EPA-estimated rating of 23 city/24 combined miles per gallon are factored in, potentially saving \$3,509 per vehicle per year.<sup>4</sup> (See comparison on next page.) The Police Interceptor Utility and an equivalent full-price of \$27.35 per gallon. (See comparison on next page.)

Assembled in the U.S.A.,<sup>5</sup> with duty-ready technology (like the available 12.1" Integrated Computer Screen (ICS)), the Police Interceptor Utility is designed and engineered in Dearborn and there's a lot of potential value for taxpayers' money. The built-in Ford modem and complimentary 2-year Ford Telematics™ subscription make for timely cloud-based, manufacturer-guided programs to help decrease running costs and improve asset utilization. Bluetooth® wireless connectivity and Apple CarPlay™ voice commands to music devices are built in to the vehicle. Durable, 12-speaker premium audio system is also built into the control panel. The Class's trailer hitch, bike rack, storage, and power windows are available. The Class's trailer hitch, bike rack, storage, and power windows are available. The Class's trailer hitch, bike rack, storage, and power windows are available. The Class's trailer hitch, bike rack, storage, and power windows are available.

capable for a max. 5,000 lbs. Dual-zone electronic automatic temperature control (DEATC) helps optimize comfort. Automatic on/off headlamps revert to the last used position. And low/high-LED headlamps with built-in fog-lamp capability and pre-illumination for user-installed warning strobes come standard, as do 4 user-selectable switches on the steering wheel. The steering column itself is theft-deterrence.<sup>6</sup>

**Exceptional safety:** The Police Interceptor Utility is 75-mph rear-impact crash tested,<sup>7</sup> a crucially important to be the only vehicle in the world engineered to meet this test.

**Note:** See additional Police Interceptor Utility DNA on pages 20-29.

## REPEAT. A NO-TRADE-OFFS HYBRID

Innovative engineering and design of the hybrid system helps reduce the volume of the battery pack. The battery pack volume is 170.0 cu. ft. or less than 11.5 cu. ft. less than the previous generation Police Interceptor Utility. Passenger volume is a vast 119.0 cu. ft. and cargo volume behind the 2nd row is approximately 52.0 cu. ft. SpaceSaver originates with the strategic placement of the hybrid's battery pack, below the floor.

On the standard Ford Police Interceptor Utility, the electric motor is high-mounted behind the battery pack. The new advanced liquid heating and cooling system that's a Ford first for an FHEV (Full Hybrid Electric Vehicle). This integrated system helps keep the pack's components operating at optimum temperature. Every add-on to go, the battery pack's approximately 280 volts (with 37kW peak discharge power) are more than capable of energizing the electric motor. The battery pack provides full power to on-board equipment - from emergency lights and radios, to heated air pumps, air conditioning and fuel - even engine start. As engine is off during idle. Remains silent for warm, and cool, and

**Cold cranking power - to start the longitudinally mounted 3.3L direct-injection hybrid V6 - is assured with the H7 AGM (absorbent glass mat) 12V battery.** It has an impressive 800 CCA (cold cranking amps) rating. It's also a step up to the H6 AGM version with an 850 CCA (cold cranking amps) rating. To help support power up to 100% electric drive, the new 220 amp DC/DC converter is put into action to power up the alternator.

**A power-calibrated high-performance Regenerative Braking System means that when braking, the Police Interceptor's lithium-ion hybrid battery is charging.** Regenerative braking recaptures energy from vehicle motion by turning the electric motor into a generator. It's a smart way to use energy and storing it in the lithium-ion battery pack for later use.

**The Police Interceptor Utility - that comes standard as a hybrid electric vehicle (HEV) with AWD - offers significant potential fuel savings.** Its lithium-ion hybrid battery can provide added benefits when considering the unique loading demands of day-to-day police use.

**While driving,** Police Interceptor Utility (standard HEV AWD) projected fuel economy compares favorably against the past-generation Police Interceptor Utility (3.7L AWD).

**2018 Police Interceptor Utility**  
(3.7L AWD)  
20,000 miles driven per year  
÷ 17 MPG (EPA-estimated combined) = 1,176 gallons of fuel consumed per year

**2021 Police Interceptor Utility**  
(standard HEV AWD)  
20,000 miles driven per year  
÷ 24 MPG (EPA-estimated combined) = 833 gallons of fuel consumed per year

While driving, the 2021 Police Interceptor Utility (standard HEV AWD) potentially saves **343** gallons of fuel per year, per vehicle.

## POWERFUL HYBRID SAVINGS

**While idling,** Even when not in motion, police vehicles must constantly keep their engines running to power electrical equipment. Ford data shows that police vehicles spend approximately one-third of each shift at engine idle. This equates to roughly a 9-hour of every 8-hour shift. The Police Interceptor Utility (standard HEV AWD) reduces engine idle time by powering the high electrical loads of a police vehicle with its lithium-ion battery. So the engine runs less - intermittently called upon to top off the battery.

**2018 Police Interceptor Utility**  
(3.7L AWD)  
4.9 hours idling per 8-hour shift  
x 2.4 gallons of fuel consumed per hour\* = 11.76 gallons of fuel consumed per year

**2021 Police Interceptor Utility**  
(standard HEV AWD)  
4.9 hours idling per 8-hour shift  
x 2.04 gallons of fuel consumed per hour\* = 9.99 gallons of fuel consumed per year

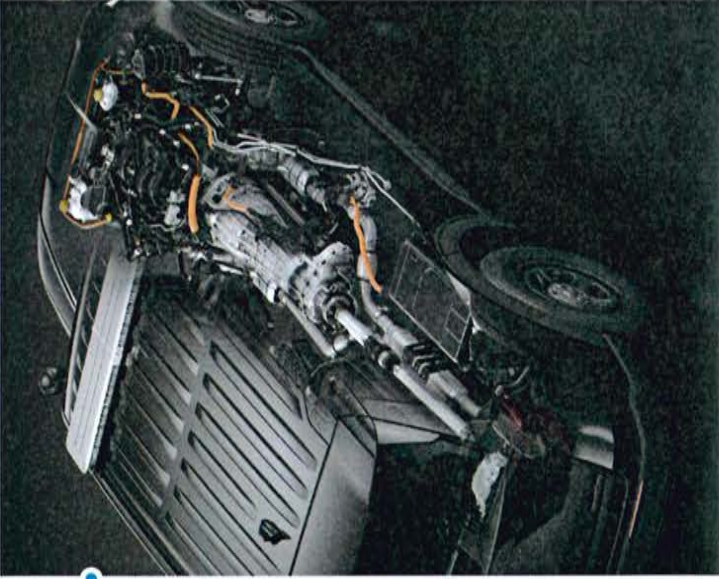
While idling, the 2021 Police Interceptor Utility (standard HEV AWD) potentially saves **933** gallons of fuel per year, per vehicle.

## In summary, the 2021 Police Interceptor Utility (standard HEV AWD) potentially saves:

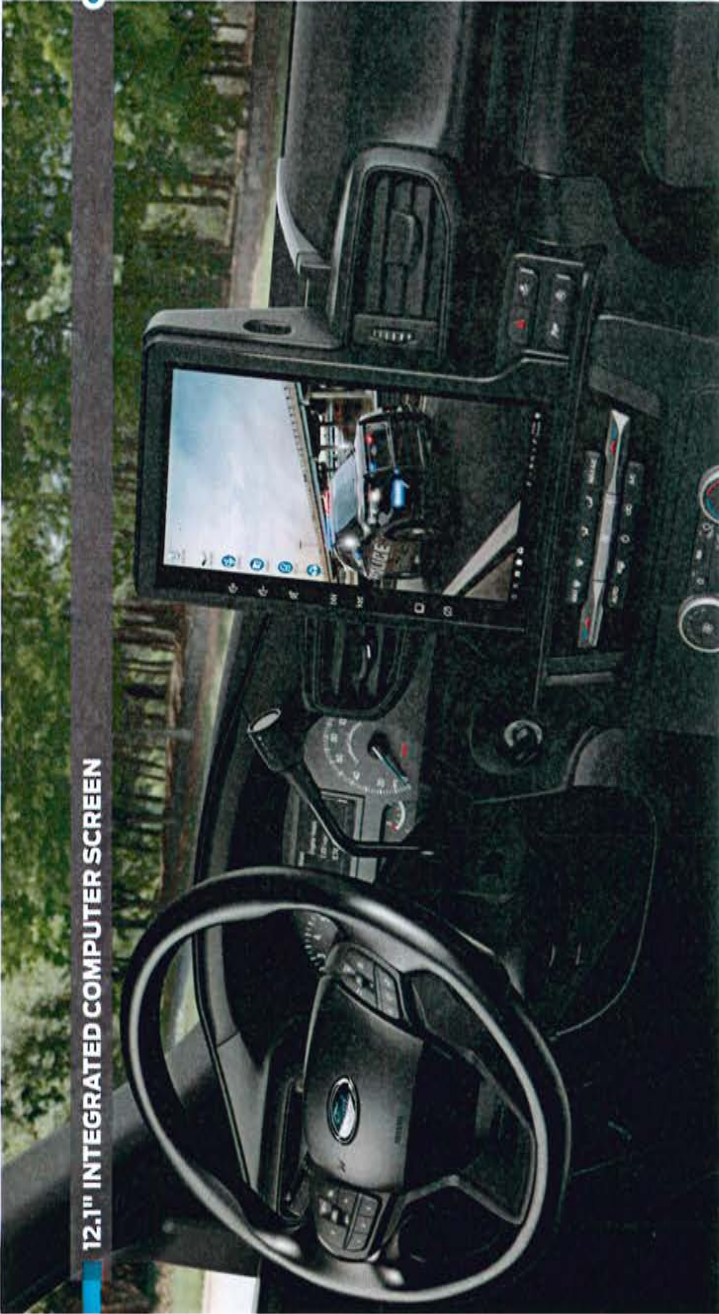
- (+) An estimated **343** gallons of fuel per year while driving.
  - (+) An estimated **933** gallons per year saved while idling in a city.
  - (-) An estimated **1,276** gallons saved per year, total.
- That's **\$3,509** in potential savings per year, per vehicle, (assuming an example gas price of \$1.75 per gallon) projecting to 4-, 5- or 6-year ownership terms. Savings could grow as high as \$34,452 at \$4.50 per gallon (per coast at night). Additionally, there's a potential **25,560 lbs. of CO<sub>2</sub> avoided\*** reduced per year, per vehicle. Visit [fordpoliceinterceptor.com](http://fordpoliceinterceptor.com) to calculate your own agency's potential savings.

## 2021 Police Interceptor Utility

Potential Total Savings at Varying Gas Prices and Terms (standard HEV AWD)	4 Years	5 Years	6 Years
\$3.00/gallon	\$15,312	\$19,140	\$22,968
\$3.50/gallon	\$17,864	\$22,330	\$26,796
\$4.00/gallon	\$20,416	\$25,520	\$30,624
\$4.50/gallon	\$22,968	\$28,710	\$34,452



\*2018 EPA-estimated 31 city/21 hwy/21 mpg. Actual mileage will vary. \*\*2021 EPA-estimated combined driving at 21 mpg. Actual mileage will vary. \*\*EPA fuel consumption estimates are based on test driving by the U.S. Environmental Protection Agency. EPA estimates are based on a 150-mile trip. EPA estimates are based on a 150-mile trip. EPA estimates are based on a 150-mile trip. EPA estimates are based on a 150-mile trip.



**12.1" INTEGRATED COMPUTER SCREEN**

**CUTTING THE CLUTTER**



Add this available factory-installed, factory-wired Integrated Computer Screen (ICS) for the freedom to stash laptops in the cargo bay, where they can be connected directly to the ICS system. Cable hookup is easy, and it helps ensure utmost security and speed. No special software is required for operation.

Centrally located, the substantial 12.1" touch-screen mirrors the laptop display and potentially eliminates the need for a standalone keyboard. Vehicle audio controls are accessible via the ICS unit. And SYNC3's voice-activated technology is included.

In addition to a built-in computer screen, you're fortified with the following associated hardware:

- One (1) 15.6" laptop screen (LVA) box — includes one (1) HDMI cable
- One (1) USB power source
- Two (2) AVX communication cables
- Three (3) USB system cables

Equipped with the conveniently placed 12.1" ICS, perform daily duties in a neat, streamlined manner. Simply select Order Code 51E on your next Police Interceptor Utility order.

6. See your dealer for complete equipment details. ©2021 Ford Motor Company. Some features are not available on all vehicles. Ford and Mustang are trademarks of Ford Motor Company.

## KEEPING A SHARP LOOKOUT

Enhanced situational awareness. The available Police Perimeter Alert utilizes Blind Spot Information System sensors for approximately 270-degree monitoring outside of the vehicle. It features a vivid visual display with motion-relevant information that can show moving objects, the motion trail, and even the potential threat level.

Neighboring movement is analyzed to determine potentially threatening behavior. When such motion is detected, the system automatically activates the rear camera (standard display or center stack only), sounds a chime, rolls up any lowered windows and locks the doors. The alerted officer can then monitor the situation.

Note: Exclusive to the Ford Police Interceptor Utility.



## POLICE PERIMETER ALERT



# FORD TELEMATICS™ FOR LAW ENFORCEMENT

## TAKING IT TO THE NEXT LEVEL

Increase operational effectiveness with the Ford engineered integrated modem that's standard on the Police Interceptor Utility and F-150 Police Responder. The Ford Plug-in Modem Kit is available to retrofit most recent Ford vehicles already in service.

The modem and plug-in device are cloud-connected gateways to Ford Telematics for law enforcement. This simple, yet powerful software tool delivers manufacturer-grade information, insights and actions. An easy-to-use interface enables management of the fleet in real time for quick assessment of needs to take action.

Improve asset uptime with Ford Telematics. Use GPS tracking and geofencing capabilities to help keep approved off fleet vehicles.

Maximize vehicle uptime with Ford Telematics. Receive proactive notifications – including Vehicle Health Alerts and service reminders – to help plan ahead.

Help optimize running costs with Ford Telematics. Monitor fuel consumption, not only identify areas of waste, but the causes too.

Protect the fleet with Ford Telematics. A range of timely notices can help facilitate quick action, protecting staff, vehicles and operators.

Think about the environment with Ford Telematics. Information is provided to help fully utilize the benefits of Ford's vehicles in the fleet.

Improve driver behavior with Ford Telematics. A range of valuable insights into driver performance can lead to coaching opportunities to help increase efficiency and improve compliance.

Note: A complimentary 2-year subscription to Ford Telematics for law enforcement comes standard on the Police Interceptor Utility, F-150 Police Responder and all 2021 Ford Police vehicles. This vehicle, however, is not a Ford. A subscription to Ford Telematics for law enforcement is available.



10 | 2-year subscription for Ford Telematics for law enforcement. Subscription requires an active cellular connection. Features may vary by vehicle. Features may vary by subscription price. All trademarks are the property of their respective owners. © 2021 Ford Motor Company. All rights reserved. Ford, Ford Telematics, and Ford Telematics for Law Enforcement are trademarks of Ford Motor Company. Complimentary refers to a 2-year period.



### TANGO. OSCAR. UNIFORM. GOLF. HOTEL.

The Ford F-150 Police Responder flaunts the most interior passenger volume of any pursuit-rated police vehicle. With 131.8 cu. ft. of interior space, it can comfortably seat 5 – complete with body armor and holsters. Shoulder room, hip room and rear leg room are the most of any pursuit-rated police vehicle. The driver's seat is 8-way powered and both front seats – power-adjustable – feature 10-way power-adjustable lumbar support. Front seats back to lean 18 degrees for an extra-inhale-inhale-inhale. Front and rear windows are tinted. Locks, windows and side-view mirror glass are power. Amenities include SYNC 3, a productivity screen, and the Remote Keyless Entry System.

Possessing the greatest torque of any pursuit-rated police vehicle, the F-150 Police Responder is also the first-ever pursuit-rated pickup truck. It's got 3.5L EcoBoost® 5-cylinder V6 in conjunction with a 10-speed SelectShift™ automatic, configured with progressive torque select and selectable Drive Modes – Normal, Tow/Haul, Snow/Slip, Eco/Select and Sport. The shifter is steering-column-mounted, the alternator is 240 amps, and the speedo is police-calibrated. It's got upgraded brake callipers, unique brake fluid-injection material and an upgraded stabilizer bar deliver necessary performance.

Responding with the best payload capacity (2,050 lbs.) and best standard towing capacity (7,000 lbs.) of any pursuit-rated police vehicle, this powerful pickup has a first-in-class, military-grade aluminum-alloy body and cargo box to reinforce its Built Ford Tough® reputation for quality, durability and muscle. Aluminum resists corrosion, and the grade 5 bolts, off-ends and dings a fully boxed, high-strength steel frame sets the foundation for more towing capability. They go for the available Trailer Tow Package and tow up to 10,500 lbs.

Outfitted exclusively in a SuperCrew® 4x4 setup – and bolstered with an FX4 Off-Road Package for off-road and available Ford Telematics® aptitude. It's prepackaged with off-road-tuned shocks, absorbers, underbody skid plates and an electronic locking rear axle. Standard confidence-driving features include Cruise Control, Trailer Sway Control, and a Rear View Camera with Dynamic Hitch Assist. There's also a built-in Ford in-motion to display and a Ford Wi-Fi hotspot for real-time, on-the-go data and strategy.



### 2020 F-150® POLICE RESPONDER®

POLICE RESPONDER

## SPECIAL SERVICE VEHICLES



## REPORTING FOR NON-PURSUIT DUTY

Like the law enforcement professionals who drive them, these Ford police vehicles are specialized to meet the needs of the communities they serve; each vehicle has been developed with input from the Ford Elite Police Advisory Board. The main objective is to provide law-enforcement agencies of all stripes with the ideal tools to get things done right.

Totally transformed inside and out, the all-new 2021 F-150<sup>®</sup> Special Service Vehicle is available with a choice of 3 engines, including an all-new hybrid powertrain – the available 3.5L PowerBoost<sup>™</sup> – is paired with a 10-speed SelectShift<sup>™</sup> automatic. No matter how it's powered, the F-150 SSV authorized Built Ford Tough<sup>™</sup> is the only way to go when police work requires the capability and dependability of a pickup.

Expedition and Expedition MAX Special Service Vehicles command authority and can fulfill diverse needs. The comfortable cabin has ample room available for up to 8, along with the necessary space for police equipment. For comparison purposes, the Expedition MAX SSV can accommodate an additional 16 9 cu. ft. of supplies.

Offering multiple configurations to suit your agency's needs, the unbridled, rugged Transit Police Transport Vehicle (PTV) is available in all-wheel drive (AWD) for outstanding traction and added get-them-where-they-gotta-go assurance. This Built Ford Tough people mover can be configured to extract people in a variety of situations, with heights, weights and wheelbases, with an option of 2 axially powered drive

## 70 YEARS STRONG

Ford has outfitted law enforcement for a full 70 decades. In 1950, Ford became the first manufacturer to offer a police package vehicle. Focusing then – as it does now – on the DNA attributes of safety, durability and performance, in addition to being purpose-built and built-in.





## ADVANCED F-150® SSV

## ALL-NEW ALL-OVER

Completely redesigned for 2021, the all-new Ford F-150 Special Service Vehicle (SSV) – available with no less than 3 engine choices, including a hybrid option – can fulfill your wish for rough and ready capability. Every powerplant is teamed with a 10-speed SelectShift™ automatic transmission. Standard equipment includes: Adaptive Drive, Normal, Sport Eco, Tow/Haul, and Slippy.

**3.5L PowerBoost® Full Hybrid V8 engine.** Pulling from the collective power of gas and electric energy, the newly available 3.5L PowerBoost Full Hybrid engine provides torque horsepower and torque to get the job done – in addition to potentially reduced idle times. Plus, the PowerBoost battery is packaged efficiently underneath the vehicle to avoid taking up space in the cab or cargo bed.

**The SSV seats 5 and is available on XL SuperCrew,® as a 4x2 or 4x4.** For the available 3.5L EcoBoost™ V6 with the available Max Trailer Tow Package to step into the impressive towing capacity of 10,000 lbs. (with proper hitch ball for the trailer receiver, this Plus View Camera with Dynamic Hitch Assist provides a visible spot on the center stack display. Special features also include a high-output 640-amp alternator, coin front seating, column-mounted police, and a vinyl floor finish and vinyl floor covering for ease of maintenance.

**F-150 is the first light-duty pickup made of high-strength, military-grade, aluminum alloys.** These panels don't rust, and they're strong and long-lasting. In other words, the SSV is made to stand up to equipment, heavy loads, and a modular frame is designed for 10 high-strength rails.

**Not only is the F-150 SSV Built Ford Tough, it also comes with Ford Co-Pilot360™ Technology.** Standard confidence-bring features include: Pre-Collision Assist with Automatic Emergency Braking (AEB), Automatic Downshift One-Off (Holds Ford's Auto Shift) feature, Plus View Camera and Dynamic Hitch Assist, and Trailer Sway Control.



## IMMENSELY IMPRESSIVE

## EXPEDITION/MAX SSV

Ideal for tactical work, hazardous-materials activity, evidence-tech operations and off-road duty, the Ford Expedition Special Service Vehicle (SSV) – in standard and extended-length MAX versions – can handle all kinds of action, big time. The robust aluminum alloy body for up to 6, plus the capacity to load connectivity technology for up to 6, plus the capacity to load connectivity technology and a space-enhancing, fold-flat, load room. A column shifter and front center-section seat-dresser make room for onboard equipment. Well-cushioned cloth-adorns the front-row bucket seats, and the same cloth comfort is available for the 2nd row. Easy-clean vinyl covers the standard 2nd-row seating, along with the full floor, plus, you get a handy array of 3rd-row storage bins in lieu of 3rd-row seating spaces.

**At nearly a foot longer than the standard-length version, the Expedition MAX SSV accommodates an additional 16.9 cu. ft. of supplies and munitions.** Both Expedition models are provisioned with a potent 3.5L EcoBoost twin-turbocharged direct-injection V6. Delivering a torquacious 370 hp and 475 lb-ft of torque, the benefits of that engine are spread all over the vehicle. The 10-speed SelectShift automatic is teamed with available 4x4, or 4x2, for greater all-terrain confidence with available eV4, which includes skid plates. You can also benefit from the joys of the 10-speed SelectShift automatic, and Auto Start-Stop Technology.

**Ford Co-Pilot360 is standard.** Numerous confidence-driving features are included, such as: Adaptive Cruise Control with Lane Keeping (AEB), Blind Spot Information System with Cross-Traffic Alert, Lane-Keep Assist System, Rear View Camera, and Trailer Sway Control.

**You're further reinforced with a 3.73 electronic limited-slip differential (eLSD), 17" heavy-duty steel wheels, and all-terrain tires.** (All-terrain tires are not available on all models.)







TRANSIT PTV



100 PROTECT AND SERVE

**CONFIGURABLE CONVEYANCE**

Compartmentalize the Ford Transit Prisoner Transport Vehicle (PTV) with single, double or triple prisoner inserts; add optional surveillance cameras, intercoms, lighting and more. Considerable versatility extends to the best-in-class choice of vehicle formats: 3 body lengths (Regular, Long, Extension), roof heights (Low, Medium, High), Seating Configuration, Cup Compartment, 12 tie-downs, 10-rod tie-downs, and more. Cup Compartment is also available with the available power reading door. Available dual rear wheels (DSRW) provide additional hauling and towing power.

A significant cargo capacity with a maximum of 5,100 lbs.<sup>1</sup> assists this PTV to master demanding challenges. Should more capacity be required, a substantial gross vehicle weight rating (GVWR) is provided, as well as a robust weight distribution system. GVWR is provided as the front wheel assembly is standard on regular, long and high roof vans. With a flat cargo floor and near-vertical sides, Transit maximizes usable space.

It's loaded with standard Ford Pro-1360™ Technology: Pro-Collision Assist with Automatic Emergency Braking (AEB), Pro-Blind Spot Assist, Lane Keeping System, Hill Start Assist, Pro-Adaptive Cruise Control, Pro-Reverse Brake, Pro-Blind Spot Warning, Weathered Windows, and Auto High Beam Headlamps.

Available Intelligent All-Wheel Drive (AWD) helps keep Transit PTV steady as it goes – so does standard AdvanceTrac™ with RSC (Roll Stability Control™) with Side-Wind Stabilization. AWD can make all the difference in snow, rain, mud, and other challenging conditions. Pro-MyFord Touch™ is a standard feature. Pro-MyFord Touch™ includes Pro-MyFord Touch™ and Pro-MyFord Touch™. Pro-MyFord Touch™ includes Pro-MyFord Touch™ and Pro-MyFord Touch™.

Helping ensure Transit PTV fulfills its missions, development vehicles were subjected to 7 million customer-equivalent miles of thermal testing in labs, at proving grounds, and on roads and highways across America. Cooling temperatures were as low as -20 from -40 to 140°F, and as high as 140 to 160°F. Pro-MyFord Touch™ includes Pro-MyFord Touch™ and Pro-MyFord Touch™.



Mustang Mach-E Platinum Star White Metallic Tri-Coat



Escape Titanium Blue Red Metallic Tri-Coat



Transit Connect XLT Passenger Wagon Blue

SUPPORTING VEHICLES

WHATEVER THE JOB IS, PUT A FORD ON IT

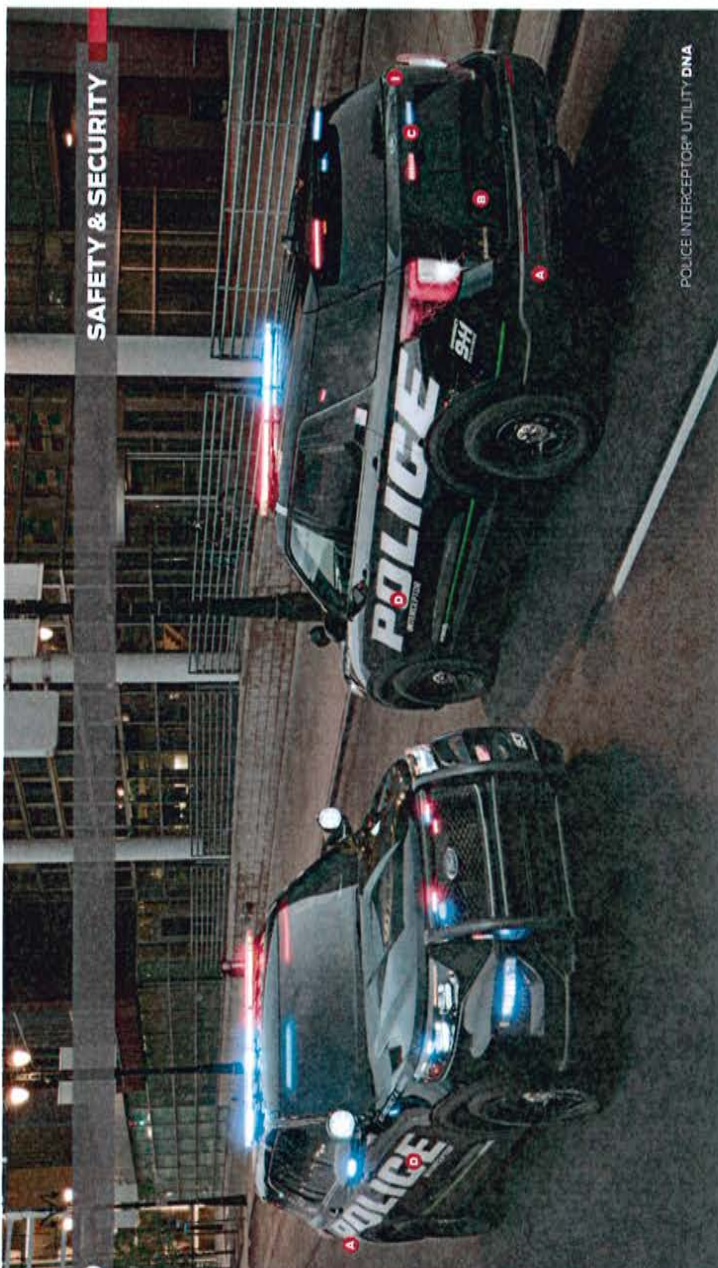
Beyond the family of police-equipped vehicles, Ford Fleet offers you an exhaustive, high-quality portfolio focused on utilities, trucks, vans and wagons. Visit the fleet.ford.com showroom for more specifics, including design, performance, technology, capacity, versatility, productivity and smart aspects as applicable to each vehicle.

- MUSTANG**  
Available models: **Convertible models:** EcoBoost Premium, GT Premium  
Available models: Select, California Route 1 Premium, Fast Edition, GT
- MUSTANG MACH-E**  
Available models: S, SE, SES, Titanium
- ECOSPORT**  
Available models: S, SE, SEL, Titanium
- EDGE**  
Available models: SE, SEL, Titanium, ST-Line, ST
- EXPLODER**  
Available models: EcoBoost, Limited, Limited Hybrid, ST, Super Duty
- EXPLORER/MAK**  
Available models: XLT, Elite, Explorer, XLT Limited, King Ranch Platinum
- F-SERIES**  
Available models: F-150, F-250, F-350, F-450  
Available Chassis Cab models: F-350, F-450, F-550, F-650, F-750
- TRANSIT CONNECT**  
Available models: Cargo Van, XL, Cargo Van XLT, Passenger Wagon, Passenger Wagon Titanium
- TRANSIT**  
Available models: Cargo Van, Crew Van, Passenger Van, XL, Passenger Van XLT, Chassis Cab

<sup>1</sup>Maximum Gross Vehicle Weight Rating (GVWR) is 5,100 lbs. GVWR is the maximum weight of the vehicle, including its own weight, passengers, cargo and equipment, which should not be exceeded.

## IN THE NAME OF PROTECTION AND PRECAUTION

- A. Worldwide vehicle exclusive: 75-mph rear-impact crash-tested.** Set the only vehicle on the market engineered to meet this test – which is well above the Federal Motor Vehicle Safety Standard of 50 mph.
- B. Available Police Perimeter Alert.<sup>2</sup>** A displays moving objects, the motion trail and the level of potential threat. (See page 8 for full details.)
- C. Available Rear Camera On Demand.** Activate it for additional surveillance at any speed, for as long as desired. This technology allows the vehicle's Rear View Camera to be operated independently with the pull of a button, not limited to just shifting into reverse.
- D. Available Level IV<sup>4</sup> or Level III<sup>4</sup> ballistic front-door panels.** Add National Institute of Justice Level IV protection against armor-piercing, .50-caliber rifle ammunition. Level II panels can help resist many handgun and non-armor-piercing bullets up to .30-caliber. Each "4" panel is 3 1/4" x 16" and is available in a variety of colors and finishes. Contact your local Ford Police Department.
- E. Extra-tough anti-stab plates.** To help keep unruly types at bay, protective steel intrusion plates are built into the driver and front-passenger seat bars.
- F. SPACE (Side Protection And Cabin Enhancement) Architecture.** Hydroformed cross-vehicle beam saddle the vehicle's sides.
- G. Multiple airbags.** Just in case, the front-seat Personal Safety System<sup>SM</sup> (with front airbags), next-seat side airbags, front-passenger knee airbags, and bio-air and side-curtain safety "Curtain" System (protecting side-curtain airbags) are at the ready.
- H. Sound surroundings.** In the event of a crash, advanced safety technology helps to absorb the energy of the collision and to direct the impact forces away from the occupants. Additionally, the occupant's inertia is reduced by the side-curtain airbags of the vehicle further absorbing and dissipating the energy of a crash to help reduce intrusion into the occupant compartment.



POLICE INTERCEPT<sup>SM</sup> UTILITY DNA

2011 POLICE & SPECIAL SERVICE VEHICLES • [fordpolicevehicles.com](http://fordpolicevehicles.com)



## HEAVY-DUTY DURABILITY

POLICE INTERCEPTOR UTILITY DNA

## IN THE NAME OF RELIABILITY AND RUGGEDNESS

**Heavy-duty steering and suspension components on the Police Interceptor Utility respond in a controlled, capable manner.** Electric, power-assisted steering (EPAS) adjusts to vehicle speed, crowned roads and crosswinds. For smooth, predictable, high-speed handling at every turn, the front and rear coil-over suspensions are fully independent — each one also incorporates a sturdy stabilizer bar to control body lean. Wheel cut-up rings and reinforced, anti-pressurized hydraulic shocks are made for constant-duty use. For added chassis strength and load capacity, the vehicle has a heavy-duty available L-Series Ford designed, underbody anti-rattle plate. **O** -recalibrated dampers and steering knuckles — tuned to the rigidity of the oil pan. The plate's shape facilitates oil-flow changes.

**Heavy-duty anti-lock brakes contribute to extreme high performance.** Police vehicles don't just need to go fast, they must halt rapidly — under control. Developed in association with the Los Angeles County Sheriff's Department and Michigan State Police, this long-wear brake system's vented rotors **O** are paired with large swept-area calipers **O** and unique pads for high thermal capacity.

**Heavy-duty cooling system regulates extreme heat.** The high-capacity radiator, engine oil cooler and transmission fluid cooler — working with the police-calibrated fan and grille — help optimize operation in times of pursuit or periods of idling.

**Heavy-duty stylized steel wheels are teamed with police-proposed hubcaps and tires.** Heavy-duty 35" steel wheels **O** are designed to be standard on the vehicle. The 35" wheels are constructed to maximize rigidity and strength. The 5-spoke design lets the brakes breathe freely and stay cool. Tires **O** are constructed to maximize grip, handling, rigidity and tread wear. To keep things rolling, the cap is not only full size, it's equipped with a Tire Pressure Monitoring System (TPMS) sensor. While TPMS is a standard vehicle feature, the Utility takes it one step further with individual TPMS, which can display exact, real-time pressure figures.

**Heavy-duty 220-amp DC/DC converter on the standard 3.3L V6 Hybrid, along with the 250-amp alternator, offer additional powerplants, are more than up to the high demands.** There's ample support for audio, video, computers and other on-board electrical equipment.

**Heavy-duty door tethers strengthen hinge action during police work.** Instead of the hinges, these supplemental front-door tethers **O** absorb the weight and force of the door when opening, and were tested for structural and mechanical integrity.

**Heavy-duty recovery hooks lend an assist as necessary.** There's a pair of hooks built into the Class II trailer hitch receiver out back.

**All kinds of heavy-duty evaluations: The Police Interceptor Utility is enhanced police durability-cycle tested.** It has thoroughly undergone reverse turns, median crossings, 30-mph raised crossings, 8' curb impacts, and water flooding conducted to levels of 16" (at 25 mph) and 30" (at 40 mph), and more.







**PURPOSE-BUILT**

POLICE INTERCEPTOR UTILITY DNA

3-year collaboration for Ford focused on safety and efficiency. Subsequent Interceptor or not equipped. Features such as the sensor that monitors the vehicle's condition are not included. ©2021 Ford Motor Company. All rights reserved.

**IN THE NAME OF FORM AND FUNCTION**

**No surrendering of space.** Total interior volume is 170.0 cu. ft., passenger volume is 84.118.0 cu. ft., and cargo volume behind the 2nd row is a generous 52.0 cu. ft. — even with the addition of the hybrid battery pack, which is located under the vehicle. Dual-zone electronic automatic temperature control (DEATC) helps maintain different preferred comfort levels, and comfort can be optimized with the 56-and-telescoping steering column.

**Free-up space for a stony workplace.** The available factory-installed 12" integrated Computer Screen **A** is stowed in the rear seat and can be viewed at the top of the center console. This smart touch-screen allows portable computers to be stored out of the way, freeing up valuable room in the front row of the cabin. (See page 6 for more details.)

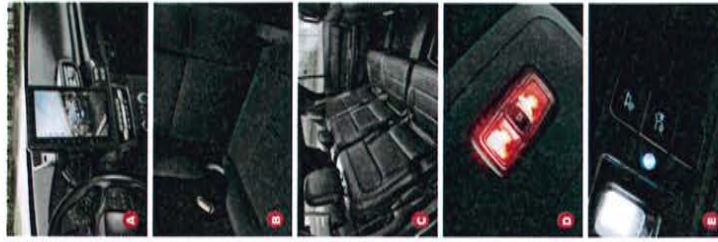
**Ergonomic front seats are made for both comfort and calls to action.** The driver's seat is 6-way powered and lumbar support is manually adjustable; both benefits are available for the front-passenger seat. The premium foam padding in each front seat is specially sculpted for officers' utility belts **B** making it easier to buckle in safely, comfortably and effortlessly — even when packing a copcarm. Seat bolsters are arm-rested, as is the high-strength, select-B-plant, to address the frequent entering and exiting of the cabin every shift. Front seat fabric is ultra-durable, and the seat backs provide an added measure of light-pipe-back resistance.

**The rear seat doesn't take a back seat to attention.** Wide-opening rear doors make 2nd-row ingress/egress a no-problem matter. The simplified rear-door overhead panel has no map pockets or cupholders, reducing opportunities to hide contraband. Available overhead door lock plungers, accessible only from the front-row door panels, are manually activated to secure occupant compartment in back. Rear seats come covered in durable vinyl **C** for easy cleaning. The 100-watt power windows include a carpeted floor, carpeted floor mats, a center floor console with cupholders, and a heavy-duty cabin floor set.

**Details that matter.** The column-mounted shifter frees up the center console. The certified speedometer (also available in digital format) provides at-a-glance readouts. To help with vehicle maintenance, truck engine hour usage and engine idle hour usage through the odometer. The cluster LCD screen is operated by 5-way steering wheel-mounted controls, while the 4.3" center-stack screen is controlled by the radio ECP buttons. Shallowly positioned radio lighting **D** helps keep operators' vision wraps, flooring throughout is covered in heavy-duty vinyl for easy clean-up.

**Simplified access measures.** The luggage release **E** is finger-touch-activated, operating on a 4.5-second timer for added security to help protect valuables in the rear cargo area, and a global lock/unlock for the doors and luggage is a no-charge option when extra security isn't required. Every Police Interceptor Utility comes with a set of 4 simple fleet keys, making for a cost-effective strategy. The availability of keyob-ake sets allows use of just a "single key" for the entire fleet. And once the key doesn't have a microchip, replacement costs are minimized. Optionally, the Remote Keyless Entry System includes a pre-programmed key fob.

**Plus, a built-in modicum with a complimentary 2-year subscription to Ford Telematics™ for law enforcement.** This powerful and purpose-built solution helps promote officer safety and increase fleet efficiency through secure access to real-time data. (See page 10 for more details.)





## UPFIT-FRIENDLY

### IN THE NAME OF CUSTOMIZING AND CONVENIENCE

To help dramatically reduce upfitting time, Ford offers optional, compatible, factory-direct police equipment that's first-in-class. Save administrative time, drop line and vehicle downtime with expert factory installation, utilizing components available for the vehicle. The equipment is designed to fit the vehicle's interior and exterior. Quality Systems, Chassis Testing, Obedience Technology, and the Ford Police Interceptor Utility are evaluated extensively. All parts – such as the available Ready-For-The-Road Package system controller – are validated to vehicle manufacturer safety standards and backed by Ford Dealers and authorized Ford Fleet maintenance facilities; they're also covered under the Ford factory warranty. For technical information that can be used as a checklist to help ensure important steps in the modification process are considered, download an official Ford Police Modifiers Guide at [fordpolicevehicles.com](http://fordpolicevehicles.com).

**Everything in its place.** A standard 8" wide front console mounting plate is a solid foundation for attaching aftermarket equipment and channeling wiring. Space actually measures a wide-open 31" between the driver and front-passenger seats. To streamline upfitting, a rear console plate is available to interface with the front plate. It extends through the 2nd-row occupant area, acting as a wiring conduit on top of the transmission tunnel – providing a path from the instrument panel center stack, all the way into the rear cargo area. There's also the option of a rear-center seat section delete. A pair of 250-amp battery disconnects are available to protect your power distribution junction block in backcountry situations. A standard 10" x 10" x 10" console storage bin is available to provide console space to make way for police equipment and ensuring accurate, reliable shifting. Up front, the reinforced universal top tray is a conveniently located for mounting radar equipment or ticket printers.

**Standard, customizable auxiliary control buttons, supported by a remarkable electrical system,** help keep distraction to a minimum while performing police tasks on the go. A user-configurable latching switch is integrated on the steering wheel. A standard 10-pin connector connects the driver with installed equipment, including lights, sirens, and more. The system is designed to be upfit-friendly, with a standard 10-pin connector on the wheel and port on the road. Whatever the need, upfitting is made easy with the use with the switches, plus 12-volt powerpoints are easily accommodated in both the front passenger cabin and rear cargo area. And the standard Police Interceptor Utility – with its unique of hybrid-board electrical equipment, Police Interceptors ordered with optional powerplants feature an impressive 250-amp alternator in lieu of a converter.

**Shining array of available lighting solutions are tailored specifically to this Police Interceptor Utility.** Headlamps are automatic on/off and feature LED low- and high-beam functions, with factory-integrated wing-wag functionality and pre-dialled for use. User-installed warning strobes, intense, long-lasting LEDs provide optimum visibility and head-up performance. They fully comply with SAE Emergency Lighting Standards. (See pages 42-43 for full lighting solutions.)

**The available vault acts undercover.** Positions on the driver's side of the cargo area, the lockable vault is a convenient place to store ammo and small weapons, seized firearms, drugs, and/or other assorted small goods and paraphernalia. Stacking of undercover, opt for the available extender police badge holder, and then clip on a set of available full-size wheel covers to create a stream-line appearance for administrative, detective and investigative ops.

POLICE INTERCEPTOR UTILITY DNA

## 2021 POLICE INTERCEPTOR® UTILITY SPECS



### STANDARD FEATURES

4.2" color LCD screen including digital speedometer, fuel gauge, oil pressure, coolant temperature, and other vehicle information. Includes interior and exterior camera. 17" split between driver's seat and front passenger seat for alternative consoles. TV powerpoint in 1st row. 75-mph rear-impact crush test<sup>1</sup>. AdvanceTrac™ with RSC<sup>2</sup> (Roll Stability Control)<sup>3</sup>. All-wheel drive (AWD). Alternator – 250-amp (3.3L Gas and 3.0L EcoBoost). 12V power windows with 1-touch windows. USB port, MP3 connectivity, clock and 6 speakers. Badge – Police Interceptor. Battery – 17 AGM (80-amp-hr/800-CCA) (3.3L Hybrid). Battery – 17 AGM (80-amp-hr/750-CCA) (3.3L Gas and 3.0L EcoBoost). 9-air-in steel intrusion plates in both front seat backs. Cargo area – Flat load floor. Class II trailer hitch receiver with 3,000-lb. capacity. 12V power windows with 1-touch windows and 2 recovery hooks. Climate controls – Dual-zone electronic automatic. Cruise control. Convenience package – Fog. Cooling system – Heavy-duty. Cruise control. Dash pass-through for aftermarket wiring. DC/DC converter – Heavy-duty 200-amp (3.3L Hybrid). Driver's seat – Front and rear. Easy Fuel power windows. Electric power-assisted steering – Heavy-duty. Engine – 3.3L V6 Hybrid System with lithium-ion battery pack. Engine-hour meter. Exterior key fob(s) – Front doors and trunk.

Fleet key – Low-cost replacement (includes 4 keys). Flooring – Heavy-duty vinyl. Front suspension and steering – Heavy-duty coil-over with 1.5" coil springs and 1.5" shock absorbers. Full-size spare wheel and tire with TPMS. Glass – Solar-limited front row privacy glass on all rear windows. 75-mph rear-impact crush test<sup>1</sup>. High beams with auto on/off. Independent front and rear suspensions. Mirrors – Power sideview, manual foldaway with 2-position memory. Power windows with 1-touch windows and 2 recovery hooks. Power distribution junction block with two (2) 50-amp battery power circuits. Power door locks. Power windows with front one-touch-4<sup>th</sup>-down. Rear View Camera with washer. Rear-window defroster. Red/white map lights – 1st row. Redundant digital speedometer display. Seat – Front heavy-duty cloth, 6-way power. Seat – Front heavy-duty cloth passenger. Seat – Rear vinyl 30/30/35 split-fold bench. SOS Post-Crash Alert System<sup>4</sup>. Traction control – LED. Tire-rotating training column. Tires – 255-K60R8 all-season BSW. Universal top tray for police equipment (lockable/unlockable). Universal top tray for police equipment. Wheels – Heavy-duty 18" 5-spoke steel.

### STANDARD SAFETY & SECURITY

Advanced ultra-high-strength boron steel in the front and rear crossmembers. Anti-lock Braking System (ABS) with Electronic Brake Boost (EBS) and 4-wheel disc brakes. The Pressure Monitoring System (TPMS) features a tire-location individual TPMS. Traction control.

### DRIVETRAIN

Police Interceptor Utility (AWD) – Standard. 3.3L V6 Direct-Injection Hybrid Engine System with 10-Speed Automatic Transmission (top speed 136 mph)  999W4J8. 3.3L V6 Direct-Injection with 10-Speed Automatic Transmission (top speed 136 mph)  94B3ALJ. 3.0L V8 EcoBoost with 10-Speed Automatic Transmission (top speed 148 mph)  9PC3ALJ.

### POWERTRAINS

3.3L V6 Direct-Injection Hybrid Engine System with 10-Speed Automatic Transmission (top speed 136 mph)  999W4J8. 3.3L V6 Direct-Injection with 10-Speed Automatic Transmission (top speed 136 mph)  94B3ALJ. 3.0L V8 EcoBoost with 10-Speed Automatic Transmission (top speed 148 mph)  9PC3ALJ.

### WHEELS

Standard. Set of 5 Heavy-duty wheels with center caps with metal color (95L) (20" wheel is 16" size spare).  Standard. Set of 4 wheels with metal color (95L) (20" wheel is 16" size spare).  Optional. Set of 4 wheels with metal color (95L) (20" wheel is 16" size spare).

### EXTERIOR COLORS



### INTERIOR COLOR



Because of occasional variations in printing, consult your Ford Dealer to ensure the true color reflects your make & model. Colors shown are representative only. See your dealer for actual paint from options. Visit [ford.com](http://ford.com) for more information or colors and special paint options.

<sup>1</sup>For more information on the safety condition in increasing to increase the rear-impact crush test performance attributes, or other information for front-impact safety, see vehicle sales. Subsequent testing may be required. Factors such as vehicle weight, distribution, and other factors may affect the results. Always use proper tie-down technique. For more information on proper tie-down technique, visit [www.ford.com](http://www.ford.com). <sup>2</sup>For more information on the safety condition in increasing to increase the rear-impact crush test performance attributes, or other information for front-impact safety, see vehicle sales. Subsequent testing may be required. Factors such as vehicle weight, distribution, and other factors may affect the results. Always use proper tie-down technique. For more information on proper tie-down technique, visit [www.ford.com](http://www.ford.com). <sup>3</sup>For more information on the safety condition in increasing to increase the rear-impact crush test performance attributes, or other information for front-impact safety, see vehicle sales. Subsequent testing may be required. Factors such as vehicle weight, distribution, and other factors may affect the results. Always use proper tie-down technique. For more information on proper tie-down technique, visit [www.ford.com](http://www.ford.com). <sup>4</sup>For more information on the safety condition in increasing to increase the rear-impact crush test performance attributes, or other information for front-impact safety, see vehicle sales. Subsequent testing may be required. Factors such as vehicle weight, distribution, and other factors may affect the results. Always use proper tie-down technique. For more information on proper tie-down technique, visit [www.ford.com](http://www.ford.com).

## 2021 POLICE INTERCEPTOR® UTILITY SPECS



### AVAILABLE PACKAGES

- 66A Tailpipe Heating
- 66B Police Interior Upgrade Solution
- 67V Police Wires Harness Connector Kit - Front and Rear
- 67H Ready-to-Go Sound Package
- 68C Rear Lighting Solution

### AVAILABLE FEATURES

- 19C 1st- and 2nd-row cupholders
- 19P 8-way power front-passenger seat with manual lumbar and recline
- 41E 12" integrated Computer Screen (ICS)
- 44E 18" high-back seat covers (N)
- 44F 18" high-back seat covers (S)
- 46E 100-watt stereo/booster
- 47A Badging delete - Deletes all "Interceptor" badging
- 47B Bullitt door panel (Level II-1) - Driver's door
- 47C Bullitt door panel (Level II-1) - Driver's door
- 47D Bullitt door panel (Level IV-1) - Driver's door
- 47E Bullitt door panel (Level IV-1) - Driver and front-passenger doors
- 47F Battery - 100 AHM (100-amp-into-CCC)
- 47G 12V (2nd 500W information system) with Cross-Traffic Alert and faster side-view mirrors
- 47H 12V (2nd 500W information system) with Cross-Traffic Alert and faster side-view mirrors
- 47I Climate control - Auxiliary air conditioning
- 47J Clock Car Features
- 47K Daytime running lamp
- 47L Dornis light - Red/white in cargo area
- 47M Engine block heater
- 47N Front console mounting plate delete
- 47O Front interior door light bar
- 47P Front interior door light bar
- 47Q Front interior door light bar
- 47R Glass - Side-vented 2nd row, privacy glass on rear quarter and liftgate window
- 47S Global lock/unlock
- 47T Hidden door-lock solenoid with rear-door controls inoperable (locks, handles and windows)
- 47U Keyed doors - N35X
- 47V Keyed doors - N35X
- 47W Keyed doors - N35X
- 47X Keyed doors - N35X
- 47Y Keyed doors - N35X
- 47Z Keyed doors - N35X

### DIMENSIONS & CAPACITIES<sup>1</sup>

EXTERIOR (in.)	INTERIOR (in.)
Length	196.9
Wheelbase	78.9 (69.3)
Height (excluding mirrors/including mirrors)	69.3
Step-in height	31.6
Cargo rear opening height	31.9
Cargo interior height (to top of floor)	50.6
Liftgate height (to top of floor)	50.6
Liftgate to ground (with raised)	70.0
Ground clearance	7.5

INTERIOR (in.)	SEATING
Head room	40.7
Leg room	40.7
Hip room	56.3
Shoulder room	61.8
Rear	40.4
Leg room	40.7
Hip room	58.1
Shoulder room	51.3

CAPACITIES	SEATING
Passenger volume (cu. ft.)	78.0
Cargo area volume with 2nd row folded (2nd row)	90.3 (behind 1st row); 52.0 (behind 2nd row)
Total interior volume (cu. ft.)	170.0
GVWR (lbs.)	6,840 (L3L, V6 Hybrid); 6,495 (L3L, V6 FFV); 6,500 (Police Interceptor)
Max. payload (lbs.)	850
Fuel (gal.)	19.0 (L3L, V6 Hybrid); 21.4 (L3L, V6 FFV/2.0L EcoBoost)
Seating	5



Pre-Collision Assist with AEB

Pre-Collision Assist disable button (left), Police Interceptor Alert activation button (right)

Direct View Camera on Centered Rear View Camera Displayed in Rearview Mirror

Inoperable rear-door controls

8.5 mirror

100 AHM battery

<sup>1</sup> Available on select vehicles. Restrictions may apply. See your dealer for details. Dimensions and capacities shown may vary due to optional features and/or production variability. Cargo and load capacity limited by weight and distribution.







## 2021 EXPEDITION/MAX SSV SPECS



Expedition XL, Agate Black

### SPECIAL SERVICE VEHICLE (SSV) PACKAGE (202A)

- Available on XL only
- 17" steel wheels
- 1265/70R17 AT OWL tires
- Running boards/delete
- Vinyl floor covering
- Differential (GLSD)
- 3rd-row storage bins

### STANDARD FEATURES

- Special Service Vehicle (SSV) Package
- 12V power windows (4)
  - Audio - AM/FM stereo with RSC (Rear Stability Control™)
  - Air conditioning with rear auxiliary controls
  - Auto - AM/FM stereo with MP3 capability and
  - Brake - 4-wheel disc with ABS-Lock
  - Cruise control
  - Daytime running lamps - Configurable
  - Easy Fuel® gas pedal fuel filler
  - Engine - 3.5L EcoBoost V6 with
  - Ford Co-Pilot360™ - Auto High-Beam Headlamps, Lane-Keeping Assist, Lane-Departing Alert and Driver Assist
  - Forward Collision Warning and Dynamic Radar Cruise Control
  - Hazard headlamps with monitoring
  - Hill Start Assist
- Individual Tire Pressure Monitoring System (TPMS; excludes tires)
- Power windows with one-touch-up/down
  - Power windows with front one-touch-up/down
  - Rear-wheel drive (RWD)
  - Seats - 10-row cloth buckets with recline and 8-way power adjust
  - Security - 4-wheel disc with ABS-Lock
  - Security - 3.5L EcoBoost V6 with
  - SOS Post-Crash Alert System
  - SYNC®
  - Tilt steering column
  - Trailer Sway Control
  - Transmission - 10-speed SelectShift™ automatic
  - Wheels - 17" steel

### ENGINE

ENGINE	Transmission	Horsepower (hp @ rpm)	Torque (lb.-ft. @ rpm)
3.5L EcoBoost V6	10-speed SelectShift™ automatic	375 @ 5,000	470 @ 3,500

### AVAILABLE PACKAGE

Henry Door Tower Door Package (20B)

Not used for payload.

### AVAILABLE FEATURES

- 4-wheel-drive (4WD) System (UG, XLS (MAX))
- Black running boards (88)
- Daytime running lamps - Non-configurable (94Z)
- Engine block heater (41)
- Reverse Sensing System (68)
- Seat - 2nd-row 40/20/40 split bench (couch) (7B)
- Seat - 3rd-row 60/40 split PowerFold® (couch) 3rd-row storage bins (8P)

### DIMENSIONS & CAPACITIES

EXTERIOR (in.)	Expedition	Expedition MAX	INTERIOR (in.)	Expedition	Expedition MAX
Length	270.0	275.9	2nd Row	40.0	40.0
Wheelbase	122.5	122.6	Head room	41.3	41.5
Width	75.4	75.4	Hip room	52.6	52.6
Height	76.4 (42Z)	76.2 (44Z)	Shoulder room	54.8	54.8
Minimum curving ground clearance	5.8	9.8 (42Z)	3rd Row	32.3	30.4
Minimum straight ground clearance	5.3	5.7 (44Z)	Head room	36.1	36.1
Cargo height	32.2	33.7	Hip room	51.4	51.4
Cargo rear opening width - Lower	51.4	51.4	Shoulder room	64.2	64.3
<b>CAPACITIES (cu. ft.)</b>					
<b>INTERIOR (in.)</b>			<b>Cargo volume</b>	104.6	121.5
1st Row	43.0	42.0	Behind 2nd row	57.5	73.3
Head room (max.)	43.9	43.8	Behind 3rd row	19.3	34.3
Hip room	62.2	62.2	(if equipped)	26.0	30.0
Shoulder room	64.3	64.5	Shelving	5.8	5.8

### TRAILER WEIGHT RATINGS\*

Class	Expedition	Max. Load	Expedition MAX
4x2 Class IV	3,200 lbs.		3,200 lbs.
4x4 Class IV	3,200 lbs.		3,200 lbs.

Max. weights shown are for properly equipped vehicles with required equipment and a 100-lb. driver. Weight of additional options, equipment, accessories and cargo must be deducted from this weight. For additional information, see your dealer. Cargo and load capacity limited by weight and distribution.

### EXTERIOR COLORS



### INTERIOR COLOR





# POLICE INTERCEPTOR® UTILITY LIGHTING SOLUTIONS\*



**Front Headlamp Lighting Solution (65A)** Includes base headlamps with LED high- and low-beam w/wig function and LED side warning light (driver side resp/w/other passenger side base view).



**Side mirror LED lamp - Base mirror glass (63L)** Features bucket flashing, linear high-intensity LED lamp.



**Side mirror LED lamp - Side mirror mirror (63R)** Features bucket flashing, linear high-intensity LED lamp.



**Tail Lamp Lighting Solution (66B)** Includes halogen base lamp, pilot (D) integrated/variable light/road LED side warning light.



**Rear Lighting Solution (66C)** Includes (1) bucket flashing, linear high-intensity LED light (driver side resp/w/other passenger side base), surround cover mounted inside the pickup plate. **Police Strata Light**, features (2) bucket flashing, linear high-intensity LED light (driver side resp/w/other passenger side base) mounted inside the license plate. **Light** lights activate when liftgate is open.



**Front bumper LED lamp (67L)** Features integrated, custom-designed LED lamp.



**Front bumper LED lamp (67R)** Includes (1) bucket flashing, linear high-intensity LED light (driver side resp/w/other passenger side base) mounted inside the windshield plate. Light can be programmed for factory (red, white, blue) patterns.



**Rear bumper LED lamp (68A)** Custom bucket flashing, linear high-intensity LED light (driver side resp/w/other passenger side base) mounted just above the license plate.



**Rear bumper LED lamp (68B)** Includes (1) bucket flashing, linear high-intensity LED light (driver side resp/w/other passenger side base) mounted on the edge of the rear spoiler. Light can be programmed for factory (red, blue, amber) patterns and factory amber-only traffic detection mode.



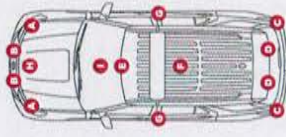
42. Available on select series. Restrictions may apply. See your dealer for details.

# FACTORY-INSTALLED UPFIT PACKAGES<sup>1</sup>



## READY-FOR-THE-ROAD PACKAGE

- Available on Police Interceptor Utility (R117)
  - A. Front Heulamp Lighting Solution
  - B. Grill LED Lighting Solution
  - C. Taillamp Lighting Solution
  - D. Rear Lighting Solution
  - E. Front console mounting plate
  - F. Rear console plate
  - G. Hidden deep-lock plungers/rear door handles interoperable
  - H. Control system
  - I. 100-watt xenon uplinker
  - J. 100-watt xenon uplinker with Traffic Advisor
  - K. Hidden CamCom rear console bracket with Traffic Advisor additional input/output signals
  - L. High-current digital
- Wholen specific WECAN cable connects CamCom to control head pre-wiring for grille LED lights, xenon and uplinker. On any wiring harness, grille LED lights, xenon and uplinker wiring, and control power harness.



## POLICE INTERIOR UPGRADE PACKAGE

- Available on Police Interceptor Utility (R117)
- Cloth rear seat – Heavy-duty fabric
- Center floor console – 2 cupholders and voice pouch
- Front and rear floor mats – Custom and custom-fit
- Front and rear carpeted floor covering – Premium-grade



**Grille LED lights**, includes (2) buckle latching function and (2) LED side marker lights (driver side red, passenger side blue).



**Tail lamp lighting solution**, includes halogen light bulb, white LED (red/blue) light, and LED (red/blue) light.



**Rear lighting solution**, includes (2) buckle latching inner high-side only LED lights (driver side red, passenger side blue), (2) LED side marker lights (driver side red, passenger side blue), and (2) buckle latching inner high-intensity LED light projector (each side, right side).



**Front console mounting plate**, solid floor option for attaching aftermarket equipment.



**Rear console plate**, interfaced with front console mounting plate and provides through 240-pin connector to the rear console. (Other wiring conduit on top of transmission tunnel).



**Hidden deep-lock plungers**, Manual lock tool with interoperable rear door handles.



**Control system**, includes CamCom controller, control head, and wires.



**100-watt xenon uplinker**, includes wires.



**Wiring harness**, includes (2) light connectors, three support (3), (6) LED lights each (engine and 1) 10-watt xenon uplinker. Circuit (engine to cargo area).

<sup>1</sup>Available. Restrictions may apply. Some Special Limited Warranty. 2 year/25,000 miles. See your dealer for details. Interceptor packages are covered under the New Vehicle Limited Warranty of 3 years/36,000 miles except where noted. Not available with options 551c, 551d, 551e, 551f, 551g, 551h, 551i, 551j, 551k, 551l, 551m, 551n, 551o, 551p, 551q, 551r, 551s, 551t, 551u, 551v, 551w, 551x, 551y, 551z, 551aa, 551ab, 551ac, and 551ad.

## SELECT FACTORY-INSTALLED UPFIT OPTIONS

Confidence in the capability of police equipment is reinforced by Ford. Components and installations are verified through the comprehensive Ford Quality System for exacting evaluation in terms of crash testing, cycle testing, vibration testing, roadload testing, humidity testing, corrosion testing and the like.

### STAND-ALONE OPTIONS

- A. Auxiliary air defroster (F73) – Offers climate control for the rear cargo area.
- B. Cargo area storage vault (S37) – Lockable and ideal for construction tools, items located on the driver's side of the cargo area.
- C. Rear console plate (S35) – Interfaces with front console mounting plate and extends through 2nd-row occupant area to seat bottom, acting as wiring conduit on top of transmission tunnel.
- D. Hidden door lock plunger (S37) – Manual lock rods; rear door controls inoperable.
- E. Sport lamp (S18) – High-intensity or LED (shown) with swivel mount.
- F. Rear quarter glass defogger (S34) – High-intensity, backlit fluorine rear high-reliability LED lamp (S34) – Includes rear console mounting plate, wiring for grille LED lights, alarm and speaker, and much more.
- G. Rear quarter glass defogger (S34) – Includes rear console mounting plate, wiring for grille LED lights, alarm and speaker, and much more.
- H. Ultimate Wiring Package (S10) – Allows up to 2 drivers to be connected to the OBD-II port.
- I. Pre-wiring for grille lamp, alarm and speaker – Electrical harness (14290) includes: (2) light connectors that support up to (3) LED lights each (in engine compartment), (1) grille LED light connector that supports (2) LED lights, and (1) front driver's side speaker inner cable (not shown).



## VEHICLE SPECIAL ORDER (VSO) PAINT, LIGHTING & EQUIPMENT



FORD FLEET



### VSO EXTERIOR COLORS

- Red
- Tom
- Green
- Sliver-Gray

### SAMPLE VSO POLICE LIGHTING OPTIONS

- Rear lights – Red/led or blue/led
- Front marker lights – Red/led or blue/led
- Front working auxiliary lights – Red/led or blue/led
- Subframe mirror side marker lights – Red/led or blue/led
- Tail lamp mounting lights – Red/led, blue/led or red/blue split
- Rear auxiliary fog/lane lights – Red/led or blue/led
- Rear quarter glass side mirror lights – Red/led or blue/led

Visit [fleet.ford.com/balers/vehicle-special-order](http://fleet.ford.com/balers/vehicle-special-order) for order codes, pricing and details.

VSO provides special paint and equipment options that are not currently available through regular – fleet-only – production. VSO offers a means of creating customized solutions that can meet the unique requirements of your force.

VSO color and equipment availability. VSO can provide a variety of unique paint finishes. In addition, VSO lighting packages and options – such as those listed at right – offer a distinctive appearance and help ensure adherence to state law requirements.

**New option development (VSO required)** – Enabling new VSO options is initiated by a customer request called a VSO inquiry. Your dealer receives and forwards the VSO inquiry. All requests are received, reviewed and approved by the VSO department to ensure the end product is compatible with regular and limited options. The end product must also meet Ford Motor Company standards of quality, durability, safety and performance.

**Production timing** – If you add exclusive VSO options to your vehicle, the process takes 60-90 days to get from order receipt to production. For newly created VSO options, please include the development timing provided within the inquiry response. For your fleet planning purposes, VSO production typically begins a month after Job One and balances out a month prior to Job Last.

To help you plan better, please visit [fleet.ford.com/orders/vehicle-special-order](http://fleet.ford.com/orders/vehicle-special-order) before ordering, to view the most current VSO options.

## ESSENTIAL RESOURCES

### SMART FUNDING

Many public agencies are discovering that Municipal Lease/Purchase Financing is today's answer to acquiring essential equipment with a limited budget constraint - without major cash outlays, long-term debt obligations or, in most cases, voter approval.



- HOW MUCH EQUIPMENT CAN YOU GET FOR \$150,000?**
- Option A: Purchase Today for Cash
- Avoid high costs of maintaining older equipment while sticking to your current budget
  - No major outlay
  - Finance side-on equipment, upfits and extended-warranty plans
  - Equity is accumulated with each payment, and ownership is realized with a final payment of \$1

### FOR YOUR BENEFIT

- Avoid high costs of maintaining older equipment
- No down payment or security deposit required
- No major outlay
- Access to the latest technologies

### WE'RE HERE FOR YOU - JUST CALL 1.800.241.4099

- Let our team help you acquire the equipment you need - when you need it
- Decision and focus on what's important - your municipality's financing
- Visit Us online at <http://www.ford.com/finance/municipal>



**Option A: Purchase Today for Cash**

**Option B: Ford Credit Municipal Lease/Purchase Financing**

Ford/Merit Credit Company ("MCC") is providing the information contained in this document for discussion purposes only in connection with a proposed financing arrangement. This information is not an offer, and it is not intended to constitute an offer. The information provided in this document is not intended to be used as a basis for investment decisions. For more information, please contact your local Ford/Merit Credit Company representative.

### FORD PROTECT

#### FORD PROTECT IS AVAILABLE FOR ALL FORD SPECIAL SERVICE VEHICLES

Upgrade your protection. Select the extended warranty that best suits your needs. There are 4 plans available that wrap around your equipment. Ford Protect is available for all Ford Special Service Vehicles. For an extended warranty, contact your Ford Special Service Vehicle representative. For more information, visit [fordprotect.com](http://fordprotect.com).

### FORD COLLISION PARTS

Dependability is crucial. To do your job, you depend on every piece of your equipment that it was designed for. The same goes for Ford Collision Parts. From the engine to the wheels, Ford Collision Parts are available in a wide range of configurations. To get the parts that came on your vehicle because they are the same parts used in the original factory, contact your Ford Special Service Vehicle representative. For more information, visit [fordcollisionparts.com](http://fordcollisionparts.com).

### Quality Fleet Care

#### FORD FLEET CARE

Ford Fleet Care is a comprehensive service you can use to help reduce your total cost of ownership. It includes everything from maintenance and repairs to performance upgrades. For more information, visit [fordfleetcare.com](http://fordfleetcare.com).

## ELITE POLICE ADVISORY BOARD (PAB)



An industry first. Acting as a liaison and resource for law-enforcement agencies nationwide, the Elite Police Advisory Board provides frank and direct feedback on the products, programs and policies of Ford. These standout officials help refine current vehicles and create future offerings. Input on safety, reliability and durability is essential to serving unique operational needs, and proves invaluable to the ongoing development of Ford law-enforcement vehicles. Please visit [fleet.ford.com](http://fleet.ford.com) for more PAB specifics.



**John Blainwood**  
Shelby County Sheriff's Office  
Blainwood@shelbycountyky.gov  
403.343.8211



**Fred Berman**  
Police Fleet Manager  
Police Fleet Manager Magazine  
778.836.4411



**Jennifer (Jan) Brown**  
Cocoma County Sheriff's  
Department  
jbrown@cocoma.gov  
928.326.5100



**Michael Casella**  
Beverly Hills Police Department  
mcasella@beverlyhills.org  
310.726.4444



**Andrés Castellón**  
Mountain Police (ICMP)  
andres.castellon@icmp-gi.ca  
503.393.2012



**Dennis Cooney**  
City of Kansas City, MO  
dcooney@kcmo.gov  
816.803.3921



**PJ Fernandez**  
Massachusetts State Police  
pjfernandez@state.ma.us  
508.800.2645



**Scott Gardner**  
Ontario Provincial Police  
scott.gardner@opps.on.ca  
705.724.8029



**Jason Holmberg**  
Police Fleet Manager  
jason.holmberg@metropolice.ca  
781.421.2716



**David (Dag) Holliday (ret.)**  
Michigan State Police  
dholliday50@gmail.com  
313.258.3693



**Ariana Huebly**  
South Dakota Highway Patrol  
ahuebly@southdakota.gov  
605.773.3105



**Carl Hines**  
Cherokee Highway Patrol  
chines@cherokee.gov  
815.940.0099



**Keith Laska**  
Lakeland Police Department  
klaska@lakelandfl.gov  
881.942.4996



**Michael J. McCarthy**  
Michigan State Police  
mccarthy@mi.state.gov  
517.240.3884



**Eric Vail**  
City of Columbus, Ohio  
eric.vail@colostate.edu  
614.643.0218



**Lagan Whelan**  
Lawrenceville Police Department  
lwhelan@lpcpd.com  
601.944.3665



**Caleb Williams**  
Coker County Sheriff's Office  
cwilliams@cocerkent.com  
256.253.5355



**George Venzuela**  
Los Angeles Police Department  
gvenzuela@lapd.com  
213.468.1020



**Scott B. Wessman**  
City of Charleston  
scott.wessman@charleston-sc.gov  
843.509.3411



**T. Henry Wilcox**  
New York City Police Department  
twilcox@nyc.gov  
212.601.7402



**Scott Wilson**  
New York City Police Department  
scott.wilson@nyc.gov  
718.670.7585



**Robert Phillips**  
Hawaii County  
rphillips@hawaii-county.gov  
808.331.3723



**Kevin Reynolds (ret.)**  
New York City Police Department  
kareyn@nyc.gov  
914.993.5556



**Paul Rowley**  
Shore University  
rowley@shore.edu  
417.375.8911



**Daren Troner**  
Las Vegas Metro  
dtroner@lvmetropoli.com  
702.828.3375



Tax ID (940160)  
27-3037655

Summary

Caldwell County Ford DBA Rockdale County Ford, LLC Information Page

Historically Unleveraged Business Certifications

Active Contracts

601-18 Vehicles, Heavy Duty Trucks, Police Motorcycles, Parts, and Service Labor

Shop  
View Products For Contract/ Vendor

Documents  
View Contract Documents

Expiration  
11/28/2022

Policy

Accept Requests for Quotes

Yes

Accept Requests for Quotes

601-18

Payments

Net 30 days

Handlings

Common Carrier

Freights

FOS Destination

Returns

Negotiable

Shipping

Pre-paid and added to invoice

Delivery

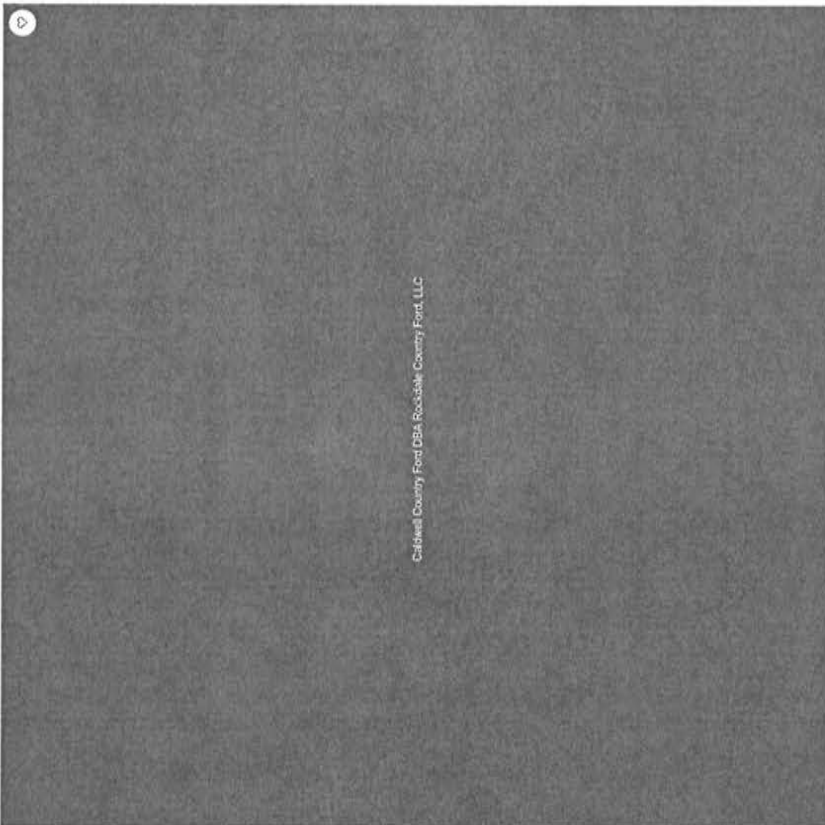
120 Days

Vendor Contract Information Summary

Vendor Announcement

No announcements.

© 1995-2021 Texas Association of School Boards, Inc. All Rights Reserved.  
P.O. Box 400, Austin, Texas 78757-0400 | 800.685.2013 | info@tasb.org  
Privacy Policy | Terms & Conditions of Use



Caldwell County Ford DBA Rockdale County Ford, LLC

Shop Products

Contact

AVERY KNAPP

Email  
a.knapp@caldwellcounty.com

Phone  
529.557.4116

Fax  
529.557.7083

Web  
www.rockdalecountyford.com

Office  
P.O. Box 72  
Rockdale TX, 75567

**CALDWELL COUNTRY FORD**

PO BOX 72, ROCKDALE, TX 76567

BUYBOARD BID 601-19

End User: JOHNSON CITY POLICE DEPARTMENT Caldwell Rep: BEN LAUREANO \*REVISED QUOTE

Contact: BARY BEDFORD Phone: 979-567-6155

Phone/email: BBEDFORD@CAPFLEETUPFITTERS.COM Date: Tuesday, April 20, 2021

Product Description: FORD POLICE INTERCEPTOR UTILITY email: ben@caldwellcountry.com

A. Bid Series: 114 A. Base Price: \$ **32,810.00**

**B. Published Options [Itemize each below]**

Code	Options	Bid Price	Code	Options	Bid Price
K8A	2021 FORD PIU AWD	INCL		DUAL ZONE FRONT AC	INCL
99B	ENGINE, 3.3L V6 DIRECT INJECTION	INCL		CRUISE CONTROL	INCL
44U	TRANS: 10-SPD AUTOMATIC	INCL		FULL VINLY FLOOR COVERING	INCL
47A	POLICE ENGINE IDLE FEATURE	\$ 260.00		POWER WINDOW/LOCK	INCL
51T	DRIVER LED SPOTLIGHT (WHELEN)	\$ 420.00		RADIO: AM/FM/MP3/BLUETOOTH	INCL
60A	GRILLE LIGHT/SIREN/SPKR PREWIRI	\$ 50.00		DEEP TINTED GLASS	INCL
68G	REAR DOOR CONTROL INOP	\$ 75.00		CLASS III TOWING EQUIP INC HITC	INCL
76D	UNDERBODY DEFLECTOR PLATE	\$ 335.00		BACK UP CAMERA	INCL
67U	ULTIMATE WIRING PACKAGE	\$ 560.00			
67V	FRONT/REAR WIRE HARNESS	\$ 185.00			
55F	REMOTE KEYLESS ENTRY	\$ 340.00			
<b>Total of B. Published Options:</b>					<b>\$ 2,225.00</b>

**C. Unpublished Options [Itemize each below, not to exceed 25%]** \$= 0.0 %

Options	Bid Price	Options	Bid Price
THEFT DETERRENT SYSTEM	INCL	YZ-OXFORD WHITE	COLOR
		96-CHARCOAL BLACK	COLOR
		ORDER 2021 MODEL	DELIVERY
<b>Total of C. Unpublished Options:</b>			<b>\$ -</b>

D. Registration, Inspection, Paperwork, Postage cost, Courthouse time, & Runner time: \$ **150.00**

E. UPFITTERS: CAPQ 100520 - \$ **21,413.85**

F. Manufacturer Destination/Delivery:

G. Floor Plan Interest (for in-stock and/or equipped vehicles): \$ **900.00**

H. Lot Insurance (for in-stock and/or equipped vehicles): \$ **-**

I. Contract Price Adjustment:  \$ **-**

J. Additional Delivery Charge:  miles \*CUSTOMER PICK-UP

K. Subtotal: \$ **57,498.85**

L. Quantity Ordered 3 x K = \$ **172,496.55**

M. Trade in:

N. BUYBOARD FEE PER PURCHASE ORDER \$ **400.00**

O. TOTAL PURCHASE PRICE WITH BUYBOARD FEE \$ **172,896.55**

# Quote

Date 2/8/2021  
Quote # CAPQ-100520



**CAP FLEET**  
UPFITTERS

CAP Fleet Upfitters, LLC  
2603 Taylors Valley Road  
Belton, TX 76513  
Phone: 254-773-1959

<b>Name / Address</b> JOHNSON CITY PD 406 W Main St, Johnson City, Texas 78636 United States
--

<b>Ship To:</b> 406 W Main St, Johnson City, Texas 78636 United States
---

<b>Salesperson:</b>	Bary Bedford
<b>Email:</b>	
<b>Contact Name:</b>	

<b>Year:</b>	2021
<b>Make:</b>	Ford
<b>Model:</b>	PI UTILITY

Job Description:

## Quote Summary

Per Vehicle Subtotal	\$21,413.85
Per Vehicle Tax	\$0.00
Per Vehicle Total	\$21,413.85

# Vehicles Quoted 1

**Grand Total \$21,413.85**

This quote is good for 30 days from date of quote.

I hereby authorize the install work therein set forth to be done by CAP Fleet Upfitters, together with the furnishing by CAP Fleet Upfitters of the necessary parts and other material for such install and agree that CAP Fleet Upfitters is not responsible for any delays caused by unavailability or delayed availability of parts or material for any reason; that CAP Fleet Upfitters neither assumes or authorizes any other person to assume for CAP Fleet Upfitters any liability in connection with such install; that CAP Fleet Upfitters shall not be responsible for loss or damage to the above vehicle, or articles left therein; in case of fire, theft, any Act of God, or other cause beyond CAP Fleet Upfitters control; that CAP Fleet Upfitters employees may operate the above vehicle on streets, highways, or elsewhere for the purpose of testing and/or inspecting such vehicle.

WWW.CAPFLEETUPFITTERS.COM

QUOTES ARE GOOD FOR 30 DAYS.

PLEASE SIGN BELOW IF ALL ITEMS & QUANTITIES ARE APPROVED.

X \_\_\_\_\_ Date: / /

# Quote

Date 2/8/2021  
 Quote # CAPQ-100520



## CAP FLEET

UP FITTERS

CAP Fleet Upfitters, LLC  
 2603 Taylors Valley Road  
 Belton, TX 76513  
 Phone: 254-773-1959

QTY	Part #	Part Details
1	200-1379-00	2020 FORD INTERCEPTOR SUV COMBO DASH MOUNT
1	200-1378-00	2020 FORD INTERCEPTOR SUV REAR ANTENNA MOUNT
1	22737	118-512 1/4 Wave Antenna, Field Tunable Notes: TESSCO
<b>CONSOLE/MDT</b>		
1	425-6512	Ford PI Utility (2020+) Max Depth Contour Console
1	425-6101	CenCom, MPC-03
1	425-6295	XTL5000 O5 (REMOTE HEAD)/APX 7500 O5 HEAD/APX6500/4500 (REMOTE HEAD)
1	425-3704	Dual ABS Cup Holder (Internally Mounted)
1	425-6260	Armrest - Upper Structure (7.75" x 8" x 8")
2	425-3692	Microphone Bracket
2	425-3816	Magnetic Microphone System - Single Pack
1	425-6164	2" BLANK FACEPLATE W/ 2.1A USB (2) & 12V OUTLETS(2)
1	425-0150/4138	The Mamba Mount with A-MOD Desktop
1	PA1580-1745	LIND ADAPTER FOR CF-74
<b>ELECTRONICS</b>		
1	DSR-2X-KIT	2X DS COUNTING UNIT WITH REMOTE DISPLAY INTERCONNECT CABLE
1	155-2211-00	REMOTE DISPLAY INTERCONNECT CABLE
1	DSR-2X	2X DS COUNTING UNIT
1	DVM-800	DVM-800 COMPLETE KIT INCLUDES ACTIVATION FEE
1	338265	3/4" MOUNT, 25' RG58/U MINI-UHF LOOSE
<b>EMERGENCY LIGHTING</b>		
1	LGYS54CORE-DE	54" DUO LEGACY FULLY POPULATED W/SMOKED LENSES (DRIVER SIDE RED/WHITE FRONT; RED/AMBER REAR; PASSENGER SIDE BLUE/WHITE FRONT; BLUE/AMBER REAR); C399 CORE SIREN; CEM16 EXPANSION MODULE; CV2V SYNC; C399K*; SA315P SPEAKER; SAK*; STPKT*
1	EB2SP3JX	54" LEGACY DUO WECAN X LIGHTBAR (SMOKED) FULLY POPULATED
1	C399	CENCOM CORE WCX CONTROL CENTER
1	SA315P	SA315P SPEAKER, BLACK PLASTIC
1	CEM16	WECANX 16 OUTPUT EXPANSION MOD
1	CV2V	VEHICLE TO-VEHICLE SYNC MODULE
1	C399K4	OBDII CANPORT CABLE KIT FORD
1	CCTL7	WECANX 21 BUTTON/SLIDE CTRL HD
1	SAK66P	SA-315 MT KIT EXPLORER PASS 20+ PI UTILITY
1	STPKT105	STRAPKIT #105 2020+ FORD PIU
2	VTX609J	VERTEX SUPER-LED SPLIT RED/BLU Mounting Location : T - TAILLIGHTS
2	I3JC	TRIO ION R/B W/ WHT OVERRIDE Mounting Location : LP - ON BRACKET

# Quote

Date 2/8/2021

Quote # CAPQ-100520



## CAP FLEET UPFITTERS

CAP Fleet Upfitters, LLC  
2603 Taylors Valley Road  
Belton, TX 76513  
Phone: 254-773-1959

QTY	Part #	Part Details
1	IONBKT1	Notes: override white on reverse and scene. red on brakes ION LICENSE PLATE BKT HORIZ.
4	I3JC	TRIO ION R/B W/ WHT OVERRIDE Mounting Location : PB - FRONT CENTER Notes: override white on takedown and scene.
<b>EXTERIOR</b>		
1	5344-4L61	2020 Ford Interceptor Utility- Push Bumper, 4-Light - Whelen ION - Light Not included
1	5344WHD	2020 Ford Interceptor Utility- Push Bumper
<b>PRISONER TRANSPORT EQUIPMENT</b>		
1	PRPSP4714UINT20A	Poly Center Slider Window with Expanded Metal Insert
1	S4705UINT20OSB	2020 PIU Standard Transport Seat w/ 7 Ga. Steel Scr Window Cargo Barrier, and Outboard Seat Belts
1	WB47NPUINT20	2020 PIU Pair, Steel Window Bars (for use with O.E.M. door panels only)
1	GK10342UHKSSCAXL	Dual T-Rail Mount 2 Universal XL , Handcuff Key Override


QTY	Part #	Description
1	LABOR	LABOR
1	SHIPPING	SHIPPING
1	PDKIT	POWER DISTRIBUTION KIT
1	DISPOSAL	DISPOSAL FEE (FOR OEM PARTS NOT PICKED UP ON DELIVERY)
1	PROGFEE	PROGRAMMING FEE
1	INSPECT	ALL CAP FLEET INSPECTIONS COME WITH AN AGENCY LIMITED LIFETIME WARRANTY
1	DEALER	DEALER PREP
1	WIRING HARNESS	WIRING HARNESS
1	SHOP SUPPLIES	SHOP SUPPLIES

QTY	Make	Model	Used
1	Motorola	XTL 5000	<input type="checkbox"/>



**MUNICIPAL FINANCE EQUIPMENT LEASE-PURCHASE APPLICATION**

**Schedule # 9606000**

1. Legal Name of Municipality ("Lessee")	City of Johnson City, TX
2. 9 Digit Federal ID Number	74-6003146
3. Street Address	303 E. Pecan Dr.
4. City, State, Zip Code	Johnson City, TX 78636
5. County	Blanco
6. What is the name of the department using the vehicle(s)/equipment and for what purpose?	Johnson City Police Department / Law Enforcement
7. How many units currently perform this function?	5
8. Does this equipment replace previous equipment?	<input checked="" type="checkbox"/> Yes → When was the previous equipment purchased? 2011 & 2012 <input type="checkbox"/> No → What is the reason for the new equipment?
9. Will the payments come from the General Fund?	<input type="checkbox"/> Yes <input checked="" type="checkbox"/> No → Please indicate the name of the Fund Interest & Sinking Fund
10. Accounts Payable Contact Information	Name: Rick A. Schroder Telephone: 830-868-7111, Ext. 8 Email: rschroder@johnsoncitytx.org
Billing address if different from above	PO Box 369 Johnson City, TX 78636
11. Attorney Contact Information	Name: Elizabeth Elleson Telephone: (512) 964-1220 Email: cityattorney@johnsoncitytx.org
<b><u>DOCUMENTATION</u></b>	
Please submit the following documents with this application:	
12. A copy of the Board Resolution or Meeting Minutes showing proof of appropriation;	
13. The most recent audited financial statements;	
14. Budget appropriation for the current year highlighting the line item from which the first payment will be made;	
15. A copy of your Tax-Exempt Certificate, if applicable; and,	
16. A copy of your insurance binder if requested financing is over \$250,000.	
<b><u>CERTIFICATION</u></b>	
I, the undersigned, certify that:	
1. Lessee has appropriated funds for the first payment.	
2. Lessee has followed all required purchasing procedures regarding the award of the proposed contract.	
3. Lessee has the requisite authority to execute, deliver and perform its obligations under the proposed contract.	
4. The execution, delivery and performance by Lessee of the proposed contract have been duly authorized by all necessary actions on its behalf.	
<b>THE SIGNATURE LINE BELOW IS TO BE SIGNED BY A PERSON DULY AUTHORIZED BY THE GOVERNING BODY TO EXECUTE THE PROPOSED CONTACT ON BEHALF OF THE LESSEE</b>	
<b>Print Name AND Title of authorized Official to sign contract</b> Rick A. Schroder Chief Administrative Officer / City Secretary	<b>Wet-Ink Signature of Authorized Official</b> 



## Finance Application for Schedule # 9606000

April 26, 2021

Municipality: City of Johnson City  
Dealer: Caldwell County Ford dba Rockdale Country Ford  
Attn: Rick Schroder

Thank you for choosing Ford Motor Credit Company for your financing. Below is a review of how we will proceed with the financing of your new vehicle(s).

Description	Unit Price
2021 Ford Police Interceptor Utility w/equipment	\$57,632.18
2021 Ford Police Interceptor Utility w/equipment	\$57,632.18
2021 Ford Police Interceptor Utility w/equipment	\$57,632.19

Total Asset Cost	\$172,896.55
Underwriting Fee	\$545.00
Amount Financed	\$173,441.55
Number of Payments	5
Payment Timing	Annual
Rate	5.85000
Payment Amount	\$38,740.22

In order to begin the approval process, please email the following document to [todonne8@ford.com](mailto:todonne8@ford.com):

- The completed Municipal Finance Application (attached). This one document also needs to be mailed to the address above.
- Proof of Appropriation (we need ONE of the following):
  - Board Meeting Minutes showing approval of vehicle(s) purchase
  - Approval of Budget with the Budget line item highlighted
  - Letter on your letterhead stating the vehicles are approved for purchase
- The most recent Audited Financial Statement
- A copy of your Tax-Exempt Certificate, if applicable.

The rate on this deal will expire on 6/25/2021. If the closing does not occur prior to the expiration date, the rate is subject to change.

Until financing has been approved, this is not a commitment by Ford Motor Credit Company to finance the above. It was prepared assuming the Municipality qualifies for Federal Income Tax Exempt Status for Ford Motor Credit Company, LLC under Section 103 of the IRS Code.

Should you have any questions, please contact me.

Sincerely,

*Tom O'Donnell*

Tom O'Donnell  
Marketing Coordinator  
[todonne8@ford.com](mailto:todonne8@ford.com)  
1-800-241-4199, press 1

REVENUE/EXPENDITURE REPORT

City of Johnson City

For the Period: 10/1/2020 to 4/30/2021

	Original Bud.	Amended Bud.	YTD Actual	CURR MTH	Encumb. YTD	UnencBal	% Bud
<b>Fund: 04 - Interest &amp; Sinking Fund</b>							
Revenues							
Dept: 000 Non-departmental							
4001 Property Taxes	0.00	0.00	0.00	0.00	0.00	0.00	0.0
4002 DEL PROPERTY TAX	0.00	0.00	0.00	0.00	0.00	0.00	0.0
4003 PENALTY & INTEREST	0.00	0.00	0.00	0.00	0.00	0.00	0.0
<hr/>							
Non-departmental	0.00	0.00	0.00	0.00	0.00	0.00	0.0
Dept: 175 I&S Revenues							
4001 Property Taxes	0.00	173,124.48	165,893.55	3,246.20	0.00	7,230.93	95.8
4809 Transfers In	0.00	25,608.49	65,967.04	0.00	0.00	-40,358.55	257.6
<hr/>							
I&S Revenues	0.00	198,732.97	231,860.59	3,246.20	0.00	-33,127.62	116.7
<hr/>							
Revenues	0.00	198,732.97	231,860.59	3,246.20	0.00	-33,127.62	116.7
Expenditures							
Dept: 000 Non-departmental							
6306 Bond, Series 2012	0.00	0.00	0.00	0.00	0.00	0.00	0.0
6324 Bond, Series 2015	0.00	0.00	0.00	0.00	0.00	0.00	0.0
6340 Bank Fees	0.00	0.00	0.00	0.00	0.00	0.00	0.0
9470 TSF- General to Debt Svc	0.00	0.00	0.00	0.00	0.00	0.00	0.0
<hr/>							
Non-departmental	0.00	0.00	0.00	0.00	0.00	0.00	0.0
Dept: 176 I&S Expenditures							
6306 Bond, Series 2012	0.00	97,725.00	12,725.00	0.00	0.00	85,000.00	13.0
6321 Miscellaneous	0.00	48,019.50	675.00	0.00	0.00	47,344.50	1.4
6324 Bond, Series 2015	0.00	52,488.50	7,488.50	0.00	0.00	45,000.00	14.3
6340 Bank Fees	0.00	500.00	236.92	0.00	0.00	263.08	47.4
<hr/>							
I&S Expenditures	0.00	198,733.00	21,125.42	0.00	0.00	177,607.58	10.6
<hr/>							
Expenditures	0.00	198,733.00	21,125.42	0.00	0.00	177,607.58	10.6
<hr/>							
Net Effect for Interest & Sinking Fund	0.00	-0.03	210,735.17	3,246.20	0.00	-210,735.20	566.7
Change in Fund Balance:			210,735.17				
<hr/>							
Grand Total Net Effect:	0.00	-0.03	210,735.17	3,246.20	0.00	-210,735.20	



Sec. 271.005. AUTHORITY TO CONTRACT FOR PERSONAL PROPERTY. (a) The governing body of a governmental agency may execute, perform, and make payments under a contract with any person for the use or the purchase or other acquisition of any personal property, or the financing thereof. The contract is an obligation of the governmental agency. The contract may:

(1) be on the terms considered appropriate by the governing body;

(2) be in the form of a lease, a lease with an option or options to purchase, an installment purchase, or any other form considered appropriate by the governing body including that of an instrument which would be required to be approved by the attorney general under Chapter 1202, Government Code, provided that contracts in such form must be approved by the attorney general in accordance with the terms of that chapter;

(3) be for a term approved by the governing body and contain an option or options to renew or extend the term; and

(4) be made payable from a pledge of all or any part of any revenues, funds, or taxes available to the governmental agency for its public purposes.

(b) The governing body of a governmental agency may contract under this section for materials and labor incident to the installation of personal property.

(c) A contract may provide for the payment of interest on the unpaid amounts of the contract at a rate or rates and may contain prepayment provisions, termination penalties, and other provisions determined within the discretion of the governing body. The net effective interest rate on the contract may not exceed the net effective interest rate at which public securities may be issued in accordance with Chapter 1204, Government Code. Interest on the unpaid amounts of a contract shall be computed as simple interest.

(d) Subject only to applicable constitutional restrictions, the governing body may obligate taxes or revenues for the full term of a contract for the payment of the contract.

Acts 1987, 70th Leg., ch. 149, Sec. 1, eff. Sept. 1, 1987. Amended by Acts 1991, 72nd Leg., ch. 82, Sec. 1, eff. May 12, 1991; Acts 1993, 73rd Leg., ch. 104, Sec. 3, eff. May 7, 1993; Acts 1999, 76th Leg., ch. 396, Sec. 1.38, eff. Sept. 1, 1999; Acts 2001, 77th Leg., ch. 1420, Sec. 8.293, eff. Sept. 1, 2001.