

Access to quality, functional water, sewer and roadway infrastructure can be a powerful driver of economic development in and around a city, but sometimes financing infrastructure expansion can be difficult. One tool a city can use to finance the cost of infrastructure expansion is impact fees, which can be adopted following the procedures detailed in Chapter 395 of the Texas Local Government Code ("Chapter 395").

Q What is an impact fee?

A An "impact fee" is defined, by statute, as "a charge or assessment imposed by a political subdivision against new development in order to generate revenue for funding or recouping the costs of capital improvements or facility expansions necessitated by and attributable to the new development." Tex. Loc. Gov't Code § 395.001(4). Put more simply, an impact fee is a tool that cities can use to recoup, from property developers, some of the costs that new development places on city infrastructure. Impact fees require new development to pay for the costs of new development.

Q What costs may be funded by impact fees?

A Impact fees may only be used to pay certain costs for: (1) constructing capital improvements or facility expansions for water supply, treatment, and distribution facilities; (2) wastewater collection and treatment facilities; (3) stormwater, drainage and flood control facilities; and (4) roadways. *Id.* § 395.001(1). Not all costs associated with infrastructure expansion qualify – only costs authorized under Chapter 395 are allowable. Allowable costs include the costs of facility expansion or new facility construction such as: (1) construction contract price; (2) surveying and engineering fees; and (3) land acquisition costs. *Id.* § 395.012(a). Fees paid to a non-city engineer or financial consultant related to preparing or updating the capital improvement plan can also be paid by impact fees. *Id.* § 395.012(a)(4). Additionally, certain financing charges related to permissible facilities improvements or expansions may be funded by impact fees, and impact fees may also be pledged to as security for bonds under certain circumstances. *Id.* § 395.012(d).

Q What items may not be paid for by an impact fee?

A Chapter 395 provides that impact fees may not be adopted or used to fund the following items: (1) construction, acquisition, or expansion of public facilities or assets *not identified* in the capital improvements plan; (2) repair, operation, or maintenance of existing or new capital improvements or facility expansions; (3) upgrading, updating, expanding, or replacing existing capital improvements to serve existing development in order to meet stricter safety, efficiency, environmental, or regulatory standards; (4) upgrading, updating, expanding, or replacing existing capital improvements to provide better service to existing development; (5) administrative and operating costs of the city; and (6) principal payments of interest or other finance charges on bonds or other indebtedness unless otherwise authorized under Chapter 395. *Id.* § 395.013.

Q Where can a city assess impact fees?

A An impact fee may be imposed within the corporate limits of a city. *Id.* § 395.011(b). Impact fees may also be imposed in the city's extraterritorial jurisdiction (ETJ), except that impact fees may not be imposed in the ETJ for roadway facilities. *Id.* § 395.011(b). The area where impact fees may be assessed is called the "Service Area." For roadway facilities, the Service Area is limited to an area within the corporate boundaries of the city, not to exceed six miles. *Id.* § 395.001(9). For storm water, drainage, and flood control facilities, the Service Area may include all or part of the land within the city or its ETJ, but shall not exceed the area actually served by the storm water, drainage, and flood control facilities designated in the capital improvements plan and shall not extend across watershed boundaries. *Id.*

In areas outside both the corporate limits and ETJ of the city, a city may only impose impact fees for capital improvements by contract (but not for roadway facilities even by contract). *Id.* § 395.011(c).

Q Are there procedural prerequisites for establishing an impact fee?

A Yes. Before a city can take final action to impose impact fees, the city must first appoint a Capital Improvements Advisory Committee and then adopt: (1) a Capital Improvements Plan; and (2) Land Use Assumptions.

Q What are Land Use Assumptions?

A Land use assumptions are essentially documentation containing a description of the Service Area and projections of changes in land uses, densities, intensities, and population in the Service Area over at least a 10-year period. *Id.* § 395.001(5).

Q What is the Capital Improvements Plan (CIP)?

A Based on the projections contained in the land use assumptions, the city also prepares a draft of a CIP detailing the capital improvements that will need to be made over the term of the plan to meet existing and projected future needs. *Id.* § 395.001(2). The CIP must be developed by qualified professionals using generally accepted engineering and planning practices. *Id.* § 395.0411. The land use assumptions and CIP are detailed documents that form the basis for calculating permissible impact fees.

Q What is the Capital Improvements Advisory Committee?

A The capital improvements advisory committee ("Committee") is an advisory committee appointed by city council to assist with the impact fee adoption and implementation process. The city council must appoint the Committee before passage of the ordinance setting the public hearing on the CIP and land use assumptions. *Id.* § 395.058. Practically speaking, once a city has decided to consider adopting an impact fee, appointment of the Committee is the first official action. In some cities, members of the Planning and Zoning Commission also serve as the Committee.

The Committee's purpose is to: (1) advise and assist the city in adopting the land use assumptions; (2) review and file written comments on the city's CIP; (3) monitor and evaluate implementation of the CIP; (4) file semiannual reports with respect to the progress of the CIP and report to the city any perceived inequities in implementing the plan or imposing the impact fee; and (5) advise the city of the need to update or revise the land

use assumptions, CIP, or impact fee. *Id.* §§ 395.058(c), 395.050. Be aware that these are not simply ad-hoc committees that disappear once an impact fee ordinance has been adopted. Due to the Committee's obligation to provide semiannual reports and advise the city council with regard to the CIP and land use assumptions, the Committee should meet on a regular basis.

Q Who may serve on the Capital Improvements Advisory Committee?

A The advisory committee must be composed of at least five members. At least 40 percent of the members of the advisory committee must be representatives of the real estate, development, or building community, and not employees or officials of the city. *Id.* § 395.058(b).

Q What is the procedure for adopting an impact fee?

A Adoption of an impact fee requires strict compliance with several detailed statutory steps, lest the city open itself up to potential legal challenge. This is a technical process with specific notice and hearing timelines, so if a city wishes to adopt impact fees or update its impact fees, it should involve its professionals early, including the city attorney and city engineer. The following is a summary of the procedural steps:

- (1) **Draft CIP and Land Use Assumptions.** The city must prepare a draft of its land use assumptions and CIP. *Id.* § 395.042. In practice, the Committee generally creates or updates these drafts in advance of the hearing described below.
- (2) **Set Hearing on CIP and Land Use Assumptions.** The council must adopt an order, resolution, or ordinance establishing a public hearing date to consider the CIP and land use assumptions. *Id.* Proper notice of the hearing must be given at least 31 days in advance of the date of the hearing. *Id.* § 395.044.
- (3) **Hold Public Hearing on CIP and Land Use Assumptions.** At the hearing, the council must allow all who desire to speak for or against the CIP or land use assumptions, or any other topic related to the upcoming impact fees, to present their views to the council. *Id.* § 395.044(c)(4).

(4) **Vote to Adopt an Ordinance Approving the CIP and Land Use Assumptions.**

After the conclusion of the hearing, the council should "determine whether to adopt or reject an ordinance, order, or resolution approving the land use assumptions and capital improvements plan." *Id.* § 395.045(a). Whether this "determination" step is a distinct requirement from simply adopting the CIP and land use assumptions is debatable. Regardless, within 30 days after the hearing, the city council must adopt an ordinance, order, or resolution approving the CIP and land use assumptions. *Id.* § 395.045(b).

(5) **Set Hearing on Impact Fees.** Assuming the city adopts the ordinance approving the CIP and land use assumptions, the city council must adopt an order or resolution setting a public hearing to consider the imposition of the impact fee. *Id.* § 395.047. Proper notice of the hearing must be given at least 31 days in advance of the date of the hearing. *Id.* § 395.049.

(6) **Advisory Committee Comments.** At least six business days before the hearing on the imposition of impact fees, the Committee must file written comments concerning the proposed impact fees. *Id.* § 395.050.

(7) **Hold Public Hearing on Impact Fees.** At the hearing on imposition of impact fees, the city council must allow all who desire to speak for or against the impact fees, or any other topic related to the upcoming impact fees, to present their views to the council. *Id.* § 395.049(c)(5).

(8) **Approve Impact Fee.** Within 30 days after the hearing on the imposition of impact fees, the city council must approve or disapprove the impact fees by order, ordinance, or resolution. *Id.* § 395.051.

Q When is an ordinance, order or resolution adopting impact fees effective?

A An ordinance, order or resolution establishing an impact fee can be effective immediately upon adoption, but the validity of such ordinance, order or resolution can be challenged in court. A lawsuit to contest the validity of an impact fee must be filed within 90 days from the date of adoption of the ordinance, order or resolution.

Id. § 395.077. To avoid refunding collected impact fees following a successful appeal, some cities delay the implementation of impact fees until after the 90-day appeal period has expired.

Q How much in impact fees may a city charge?

A An impact fee may not exceed the cost of capital improvements and facility expansions required by the new development (as calculated by a professional engineer), minus a credit in an amount equal to either: (1) the new property taxes and utility revenue generated by the development; or (2) 50 percent of total costs of the capital improvements, with that figure being divided by the total number of projected service units attributable to the new development. *Id.* § 395.015. Additionally, any construction of, contributions to, or dedications of off-site roadway facilities agreed to or required by the city as a condition of development approval shall be credited against roadway facilities impact fees otherwise due from the development. *Id.* § 395.023. It is up to the city, with the advice of its professionals, to determine which of the two credits above will be subtracted from the costs when calculating the impact fee.

Q What is the difference between impact fee "assessment" and "collection"?

A "Assessment" is the determination of the maximum amount of the impact fee that can be charged per service unit of development on the date when the impact fee amount is calculated as discussed below. *Id.* § 395.016(f). "Collection" is the actual payment of the assessed impact fee to the city.

Q When may an impact fee be assessed and collected from a developer?

A Generally, impact fees are assessed on development at the time the final plat of the property is recorded. *Id.* § 395.016. Impact fees are generally collected when a building permit is issued or, in some cases, when a meter is installed. *Id.* § 395.016. Keep in mind that, with certain exceptions, impact fees generally may be assessed but not collected where services are unavailable. *Id.* § 395.019. Chapter 395 provides different timeframes for assessment and collection of impact fees based on when the impact fees were adopted, so cities should carefully review Chapter 395 before taking final action. Additionally, the landowner and the city can set,

by agreement, the time and method of payment of impact fees. *Id.* § 395.018.

Q When is it too late to assess an impact fee on new development?

A If an impact fee is adopted after the land being developed is platted, fees cannot be assessed on any service unit that receives its building permit within one year after adoption of the impact fee. *Id.* § 395.016(c).

Q Should a city segregate impact fee funds from other municipal funds ?

A Yes. Because impact fee funds may be spent only for the purposes for which the impact fee was imposed, mingling the funds with other city revenues can be problematic. The order, ordinance, or resolution levying an impact fee must provide that all funds collected through the adoption of an impact fee shall be deposited in interest-bearing accounts clearly identifying the category of capital improvements or facility expansions within the service area for which the fee was adopted. *Id.* § 395.024(a). Furthermore, interest earned by impact fees is subject to the same use restrictions placed on the use of impact fee funds. *Id.* § 395.024(d).

Q What fees and other development tools are not considered impact fees (and thus not subject to the procedures or restrictions under Chapter 395)?

A A number of land development costs are not considered impact fees, and thus are not subject to the detailed procedures and formulas set forth in Chapter 395, including: (1) dedication of land for public parks; (2) payment in lieu of the dedication of parks; (3) dedication of rights-of-way or easements for on-site or off-site water distribution, wastewater collection or drainage facilities, or streets, sidewalks, or curbs if the dedication or construction is required by a valid ordinance and is necessitated by and attributable to the new development; (4) construction or dedication of on-site or off-site water distribution, wastewater collection or drainage facilities, or streets, sidewalks, or curbs if the dedication or construction is required by a valid ordinance and is necessitated by and attributable to the new development; (5) lot or acreage fees to be placed in trust funds for the purpose of reimbursing

developers for oversizing or constructing water or sewer mains or lines; and (6) other pro rata fees for reimbursement of water or sewer mains or lines extended by the political subdivision. *Id.* § 395.001(4).

Q Is a city required to review its CIP, Land Use Assumptions or impact fees after adoption?

A Yes. A city imposing impact fees must hold hearings and update its CIP and land use assumptions at least every five years. *Id.* § 395.052. Chapter 395 contains detailed procedures for hearings, review, and amendment of the CIP, which are essentially the same as the procedures for initial adoption. *Id.* §§ 395.053-395.057. Keep in mind that the Committee is required to make semiannual reports to the city council as well as advise the council with respect to the progress of the CIP. ★

HYDROPRO[®]
SOLUTIONS

**READY TO
INCREASE
REVENUE?**

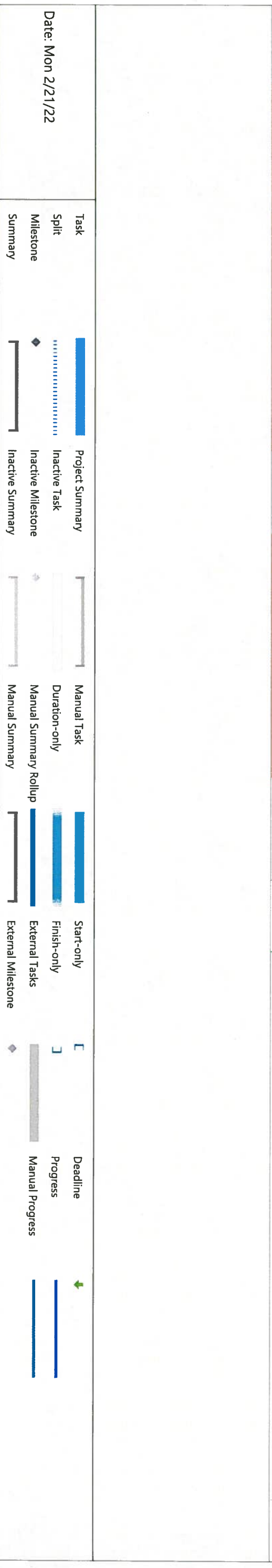
WE CAN HELP YOUR WATER UTILITY:
**INCREASE REVENUE, DECREASE OPERATIONAL
COSTS & INCREASE SAFETY**

FLUID WORLD, SOLID RELIABILITY

WWW.HYDROPROSOLUTIONS.COM (512) 996-8944

**City of Johnson City
Capital Improvements Plan Update & Impact Fee Study**

ID	Task Name	Duration	Start	Finish	Predecessors
1	Capital Improvements Plan Update & Impact Fee Study	126 days	Mon 2/7/22	Mon 8/1/22	
2	Notice to Proceed	0 days	Mon 2/7/22	Mon 2/7/22	
3	Project Setup & Data Collection	20 days	Mon 2/7/22	Fri 3/4/22	
7	Land Use Plan Update	15 days	Mon 2/21/22	Fri 3/11/22	
11	Capital Improvements Plan Update	21 days	Mon 3/7/22	Mon 4/4/22	
20	Notice of Public Hearing	0 days	Tue 4/5/22	Tue 4/5/22	
21	Prepare exhibits for Public Hearing	10 days	Tue 4/5/22	Mon 4/18/22	
22	Council Meeting / Public Hearing - Land Use and CIP	5 days	Tue 5/3/22	Mon 5/9/22	20FS+18 days
23	Address Comments	5 days	Tue 5/10/22	Mon 5/16/22	22
24	Impact Fees Update	20 days	Tue 5/17/22	Mon 6/13/22	23
30	Notice of Impact Fee Hearing	0 days	Mon 6/13/22	Mon 6/13/22	29
31	Advisory Committee Public Hearing - Impact Fees	5 days	Tue 7/12/22	Mon 7/18/22	30FS+20 days
32	Address Committee Comments	5 days	Tue 7/19/22	Mon 7/25/22	31
33	City Council Meeting - Adoption of Impact Fees	5 days	Tue 7/26/22	Mon 8/1/22	31FS+5 days



Date: Mon 2/21/22

Task Summary Legend:

- Task: Solid blue bar
- Split: Dashed blue bar
- Milestone: Diamond icon
- Summary: Thin grey bar
- Project Summary: Thick blue bar
- Inactive Task: Dotted blue bar
- Inactive Milestone: Diamond icon with grey background
- Inactive Summary: Thin grey bar
- Manual Task: Thin grey bar
- Duration-only: Thin grey bar
- Manual Summary Rollup: Thick blue bar
- Manual Summary: Thin grey bar
- Start-only: Thin blue bar
- Finish-only: Thin blue bar
- External Tasks: Thin grey bar
- External Milestone: Diamond icon with grey background
- Deadline: Green arrow icon
- Progress: Blue bar with gradient
- Manual Progress: Thin blue bar

LOCAL GOVERNMENT CODE

TITLE 12. PLANNING AND DEVELOPMENT

SUBTITLE C. PLANNING AND DEVELOPMENT PROVISIONS APPLYING TO MORE THAN ONE
TYPE OF LOCAL GOVERNMENTCHAPTER 395. FINANCING CAPITAL IMPROVEMENTS REQUIRED BY NEW DEVELOPMENT IN
MUNICIPALITIES, COUNTIES, AND CERTAIN OTHER LOCAL GOVERNMENTS

SUBCHAPTER A. GENERAL PROVISIONS

Sec. 395.001. DEFINITIONS. In this chapter:

(1) "Capital improvement" means any of the following facilities that have a life expectancy of three or more years and are owned and operated by or on behalf of a political subdivision:

(A) water supply, treatment, and distribution facilities; wastewater collection and treatment facilities; and storm water, drainage, and flood control facilities; whether or not they are located within the service area; and

(B) roadway facilities.

(2) "Capital improvements plan" means a plan required by this chapter that identifies capital improvements or facility expansions for which impact fees may be assessed.

(3) "Facility expansion" means the expansion of the capacity of an existing facility that serves the same function as an otherwise necessary new capital improvement, in order that the existing facility may serve new development. The term does not include the repair, maintenance, modernization, or expansion of an existing facility to better serve existing development.

(4) "Impact fee" means a charge or assessment imposed by a political subdivision against new development in order to generate revenue for funding or recouping the costs of capital improvements or facility expansions necessitated by and attributable to the new development. The term includes amortized charges, lump-sum charges, capital recovery fees, contributions in aid of construction, and any other fee that functions as described by this definition. The term does not include:

(A) dedication of land for public parks or payment in lieu of the dedication to serve park needs;

(B) dedication of rights-of-way or easements or construction or dedication of on-site or off-site water distribution, wastewater

collection or drainage facilities, or streets, sidewalks, or curbs if the dedication or construction is required by a valid ordinance and is necessitated by and attributable to the new development;

(C) lot or acreage fees to be placed in trust funds for the purpose of reimbursing developers for oversizing or constructing water or sewer mains or lines; or

(D) other pro rata fees for reimbursement of water or sewer mains or lines extended by the political subdivision.

However, an item included in the capital improvements plan may not be required to be constructed except in accordance with Section 395.019(2), and an owner may not be required to construct or dedicate facilities and to pay impact fees for those facilities.

(5) "Land use assumptions" includes a description of the service area and projections of changes in land uses, densities, intensities, and population in the service area over at least a 10-year period.

(6) "New development" means the subdivision of land; the construction, reconstruction, redevelopment, conversion, structural alteration, relocation, or enlargement of any structure; or any use or extension of the use of land; any of which increases the number of service units.

(7) "Political subdivision" means a municipality, a district or authority created under Article III, Section 52, or Article XVI, Section 59, of the Texas Constitution, or, for the purposes set forth by Section 395.079, certain counties described by that section.

(8) "Roadway facilities" means arterial or collector streets or roads that have been designated on an officially adopted roadway plan of the political subdivision, together with all necessary appurtenances. The term includes the political subdivision's share of costs for roadways and associated improvements designated on the federal or Texas highway system, including local matching funds and costs related to utility line relocation and the establishment of curbs, gutters, sidewalks, drainage appurtenances, and rights-of-way.

(9) "Service area" means the area within the corporate boundaries or extraterritorial jurisdiction, as determined under Chapter 42, of the political subdivision to be served by the capital improvements or facilities expansions specified in the capital improvements plan, except roadway facilities and storm water, drainage, and flood control facilities. The service area, for the purposes of this chapter, may include all or part of the land within the political subdivision or its extraterritorial jurisdiction, except for roadway facilities and storm water, drainage, and

flood control facilities. For roadway facilities, the service area is limited to an area within the corporate boundaries of the political subdivision and shall not exceed six miles. For storm water, drainage, and flood control facilities, the service area may include all or part of the land within the political subdivision or its extraterritorial jurisdiction, but shall not exceed the area actually served by the storm water, drainage, and flood control facilities designated in the capital improvements plan and shall not extend across watershed boundaries.

(10) "Service unit" means a standardized measure of consumption, use, generation, or discharge attributable to an individual unit of development calculated in accordance with generally accepted engineering or planning standards and based on historical data and trends applicable to the political subdivision in which the individual unit of development is located during the previous 10 years.

Added by Acts 1989, 71st Leg., ch. 1, Sec. 82(a), eff. Aug. 28, 1989.

Amended by Acts 1989, 71st Leg., ch. 566, Sec. 1(e), eff. Aug. 28, 1989;
Acts 2001, 77th Leg., ch. 345, Sec. 1, eff. Sept. 1, 2001.

SUBCHAPTER B. AUTHORIZATION OF IMPACT FEE

Sec. 395.011. AUTHORIZATION OF FEE. (a) Unless otherwise specifically authorized by state law or this chapter, a governmental entity or political subdivision may not enact or impose an impact fee.

(b) Political subdivisions may enact or impose impact fees on land within their corporate boundaries or extraterritorial jurisdictions only by complying with this chapter, except that impact fees may not be enacted or imposed in the extraterritorial jurisdiction for roadway facilities.

(c) A municipality may contract to provide capital improvements, except roadway facilities, to an area outside its corporate boundaries and extraterritorial jurisdiction and may charge an impact fee under the contract, but if an impact fee is charged in that area, the municipality must comply with this chapter.

Added by Acts 1989, 71st Leg., ch. 1, Sec. 82(a), eff. Aug. 28, 1989.

Sec. 395.012. ITEMS PAYABLE BY FEE. (a) An impact fee may be imposed only to pay the costs of constructing capital improvements or facility expansions, including and limited to the:

- (1) construction contract price;
- (2) surveying and engineering fees;

(3) land acquisition costs, including land purchases, court awards and costs, attorney's fees, and expert witness fees; and

(4) fees actually paid or contracted to be paid to an independent qualified engineer or financial consultant preparing or updating the capital improvements plan who is not an employee of the political subdivision.

(b) Projected interest charges and other finance costs may be included in determining the amount of impact fees only if the impact fees are used for the payment of principal and interest on bonds, notes, or other obligations issued by or on behalf of the political subdivision to finance the capital improvements or facility expansions identified in the capital improvements plan and are not used to reimburse bond funds expended for facilities that are not identified in the capital improvements plan.

(c) Notwithstanding any other provision of this chapter, the Edwards Underground Water District or a river authority that is authorized elsewhere by state law to charge fees that function as impact fees may use impact fees to pay a staff engineer who prepares or updates a capital improvements plan under this chapter.

(d) A municipality may pledge an impact fee as security for the payment of debt service on a bond, note, or other obligation issued to finance a capital improvement or public facility expansion if:

(1) the improvement or expansion is identified in a capital improvements plan; and

(2) at the time of the pledge, the governing body of the municipality certifies in a written order, ordinance, or resolution that none of the impact fee will be used or expended for an improvement or expansion not identified in the plan.

(e) A certification under Subsection (d)(2) is sufficient evidence that an impact fee pledged will not be used or expended for an improvement or expansion that is not identified in the capital improvements plan.

Added by Acts 1989, 71st Leg., ch. 1, Sec. 82(a), eff. Aug. 28, 1989.
Amended by Acts 1995, 74th Leg., ch. 90, Sec. 1, eff. May 16, 1995.

Sec. 395.013. ITEMS NOT PAYABLE BY FEE. Impact fees may not be adopted or used to pay for:

(1) construction, acquisition, or expansion of public facilities or assets other than capital improvements or facility expansions identified in the capital improvements plan;

- (2) repair, operation, or maintenance of existing or new capital improvements or facility expansions;
- (3) upgrading, updating, expanding, or replacing existing capital improvements to serve existing development in order to meet stricter safety, efficiency, environmental, or regulatory standards;
- (4) upgrading, updating, expanding, or replacing existing capital improvements to provide better service to existing development;
- (5) administrative and operating costs of the political subdivision, except the Edwards Underground Water District or a river authority that is authorized elsewhere by state law to charge fees that function as impact fees may use impact fees to pay its administrative and operating costs;
- (6) principal payments and interest or other finance charges on bonds or other indebtedness, except as allowed by Section 395.012.

Added by Acts 1989, 71st Leg., ch. 1, Sec. 82(a), eff. Aug. 28, 1989.

Sec. 395.014. CAPITAL IMPROVEMENTS PLAN. (a) The political subdivision shall use qualified professionals to prepare the capital improvements plan and to calculate the impact fee. The capital improvements plan must contain specific enumeration of the following items:

- (1) a description of the existing capital improvements within the service area and the costs to upgrade, update, improve, expand, or replace the improvements to meet existing needs and usage and stricter safety, efficiency, environmental, or regulatory standards, which shall be prepared by a qualified professional engineer licensed to perform the professional engineering services in this state;

- (2) an analysis of the total capacity, the level of current usage, and commitments for usage of capacity of the existing capital improvements, which shall be prepared by a qualified professional engineer licensed to perform the professional engineering services in this state;

- (3) a description of all or the parts of the capital improvements or facility expansions and their costs necessitated by and attributable to new development in the service area based on the approved land use assumptions, which shall be prepared by a qualified professional engineer licensed to perform the professional engineering services in this state;

- (4) a definitive table establishing the specific level or quantity of use, consumption, generation, or discharge of a service unit for each category of capital improvements or facility expansions and an equivalency or conversion table establishing the ratio of a service unit to

various types of land uses, including residential, commercial, and industrial;

(5) the total number of projected service units necessitated by and attributable to new development within the service area based on the approved land use assumptions and calculated in accordance with generally accepted engineering or planning criteria;

(6) the projected demand for capital improvements or facility expansions required by new service units projected over a reasonable period of time, not to exceed 10 years; and

(7) a plan for awarding:

(A) a credit for the portion of ad valorem tax and utility service revenues generated by new service units during the program period that is used for the payment of improvements, including the payment of debt, that are included in the capital improvements plan; or

(B) in the alternative, a credit equal to 50 percent of the total projected cost of implementing the capital improvements plan.

(b) The analysis required by Subsection (a)(3) may be prepared on a systemwide basis within the service area for each major category of capital improvement or facility expansion for the designated service area.

(c) The governing body of the political subdivision is responsible for supervising the implementation of the capital improvements plan in a timely manner.

Added by Acts 1989, 71st Leg., ch. 1, Sec. 82(a), eff. Aug. 28, 1989.

Amended by Acts 2001, 77th Leg., ch. 345, Sec. 2, eff. Sept. 1, 2001.

Sec. 395.015. MAXIMUM FEE PER SERVICE UNIT. (a) The impact fee per service unit may not exceed the amount determined by subtracting the amount in Section 395.014(a)(7) from the costs of the capital improvements described by Section 395.014(a)(3) and dividing that amount by the total number of projected service units described by Section 395.014(a)(5).

(b) If the number of new service units projected over a reasonable period of time is less than the total number of new service units shown by the approved land use assumptions at full development of the service area, the maximum impact fee per service unit shall be calculated by dividing the costs of the part of the capital improvements necessitated by and attributable to projected new service units described by Section 395.014(a)(6) by the projected new service units described in that section.

Added by Acts 1989, 71st Leg., ch. 1, Sec. 82(a), eff. Aug. 28, 1989.

Amended by Acts 2001, 77th Leg., ch. 345, Sec. 3, eff. Sept. 1, 2001.

Sec. 395.016. TIME FOR ASSESSMENT AND COLLECTION OF FEE. (a) This subsection applies only to impact fees adopted and land platted before June 20, 1987. For land that has been platted in accordance with Subchapter A, Chapter 212, or the subdivision or platting procedures of a political subdivision before June 20, 1987, or land on which new development occurs or is proposed without platting, the political subdivision may assess the impact fees at any time during the development approval and building process. Except as provided by Section 395.019, the political subdivision may collect the fees at either the time of recordation of the subdivision plat or connection to the political subdivision's water or sewer system or at the time the political subdivision issues either the building permit or the certificate of occupancy.

(b) This subsection applies only to impact fees adopted before June 20, 1987, and land platted after that date. For new development which is platted in accordance with Subchapter A, Chapter 212, or the subdivision or platting procedures of a political subdivision after June 20, 1987, the political subdivision may assess the impact fees before or at the time of recordation. Except as provided by Section 395.019, the political subdivision may collect the fees at either the time of recordation of the subdivision plat or connection to the political subdivision's water or sewer system or at the time the political subdivision issues either the building permit or the certificate of occupancy.

(c) This subsection applies only to impact fees adopted after June 20, 1987. For new development which is platted in accordance with Subchapter A, Chapter 212, or the subdivision or platting procedures of a political subdivision before the adoption of an impact fee, an impact fee may not be collected on any service unit for which a valid building permit is issued within one year after the date of adoption of the impact fee.

(d) This subsection applies only to land platted in accordance with Subchapter A, Chapter 212, or the subdivision or platting procedures of a political subdivision after adoption of an impact fee adopted after June 20, 1987. The political subdivision shall assess the impact fees before or at the time of recordation of a subdivision plat or other plat under Subchapter A, Chapter 212, or the subdivision or platting ordinance or procedures of any political subdivision in the official records of the county clerk of the county in which the tract is located. Except as provided by Section 395.019, if the political subdivision has water and wastewater capacity available:

(1) the political subdivision shall collect the fees at the time the political subdivision issues a building permit;

(2) for land platted outside the corporate boundaries of a municipality, the municipality shall collect the fees at the time an application for an individual meter connection to the municipality's water or wastewater system is filed; or

(3) a political subdivision that lacks authority to issue building permits in the area where the impact fee applies shall collect the fees at the time an application is filed for an individual meter connection to the political subdivision's water or wastewater system.

(e) For land on which new development occurs or is proposed to occur without platting, the political subdivision may assess the impact fees at any time during the development and building process and may collect the fees at either the time of recordation of the subdivision plat or connection to the political subdivision's water or sewer system or at the time the political subdivision issues either the building permit or the certificate of occupancy.

(f) An "assessment" means a determination of the amount of the impact fee in effect on the date or occurrence provided in this section and is the maximum amount that can be charged per service unit of such development. No specific act by the political subdivision is required.

(g) Notwithstanding Subsections (a)-(e) and Section 395.017, the political subdivision may reduce or waive an impact fee for any service unit that would qualify as affordable housing under 42 U.S.C. Section 12745, as amended, once the service unit is constructed. If affordable housing as defined by 42 U.S.C. Section 12745, as amended, is not constructed, the political subdivision may reverse its decision to waive or reduce the impact fee, and the political subdivision may assess an impact fee at any time during the development approval or building process or after the building process if an impact fee was not already assessed.

Added by Acts 1989, 71st Leg., ch. 1, Sec. 82(a), eff. Aug. 28, 1989.
Amended by Acts 1997, 75th Leg., ch. 980, Sec. 52, eff. Sept. 1, 1997;
Acts 2001, 77th Leg., ch. 345, Sec. 4, eff. Sept. 1, 2001.

Sec. 395.017. ADDITIONAL FEE PROHIBITED; EXCEPTION. After assessment of the impact fees attributable to the new development or execution of an agreement for payment of impact fees, additional impact fees or increases in fees may not be assessed against the tract for any reason unless the number of service units to be developed on the tract

increases. In the event of the increase in the number of service units, the impact fees to be imposed are limited to the amount attributable to the additional service units.

Added by Acts 1989, 71st Leg., ch. 1, Sec. 82(a), eff. Aug. 28, 1989.

Sec. 395.018. AGREEMENT WITH OWNER REGARDING PAYMENT. A political subdivision is authorized to enter into an agreement with the owner of a tract of land for which the plat has been recorded providing for the time and method of payment of the impact fees.

Added by Acts 1989, 71st Leg., ch. 1, Sec. 82(a), eff. Aug. 28, 1989.

Sec. 395.019. COLLECTION OF FEES IF SERVICES NOT AVAILABLE. Except for roadway facilities, impact fees may be assessed but may not be collected in areas where services are not currently available unless:

(1) the collection is made to pay for a capital improvement or facility expansion that has been identified in the capital improvements plan and the political subdivision commits to commence construction within two years, under duly awarded and executed contracts or commitments of staff time covering substantially all of the work required to provide service, and to have the service available within a reasonable period of time considering the type of capital improvement or facility expansion to be constructed, but in no event longer than five years;

(2) the political subdivision agrees that the owner of a new development may construct or finance the capital improvements or facility expansions and agrees that the costs incurred or funds advanced will be credited against the impact fees otherwise due from the new development or agrees to reimburse the owner for such costs from impact fees paid from other new developments that will use such capital improvements or facility expansions, which fees shall be collected and reimbursed to the owner at the time the other new development records its plat; or

(3) an owner voluntarily requests the political subdivision to reserve capacity to serve future development, and the political subdivision and owner enter into a valid written agreement.

Added by Acts 1989, 71st Leg., ch. 1, Sec. 82(a), eff. Aug. 28, 1989.

Sec. 395.020. ENTITLEMENT TO SERVICES. Any new development for which an impact fee has been paid is entitled to the permanent use and benefit of the services for which the fee was exacted and is entitled to receive

immediate service from any existing facilities with actual capacity to serve the new service units, subject to compliance with other valid regulations.

Added by Acts 1989, 71st Leg., ch. 1, Sec. 82(a), eff. Aug. 28, 1989.

Sec. 395.021. AUTHORITY OF POLITICAL SUBDIVISIONS TO SPEND FUNDS TO REDUCE FEES. Political subdivisions may spend funds from any lawful source to pay for all or a part of the capital improvements or facility expansions to reduce the amount of impact fees.

Added by Acts 1989, 71st Leg., ch. 1, Sec. 82(a), eff. Aug. 28, 1989.

Sec. 395.022. AUTHORITY OF POLITICAL SUBDIVISION TO PAY FEES. (a) Political subdivisions and other governmental entities may pay impact fees imposed under this chapter.

(b) A school district is not required to pay impact fees imposed under this chapter unless the board of trustees of the district consents to the payment of the fees by entering a contract with the political subdivision that imposes the fees. The contract may contain terms the board of trustees considers advisable to provide for the payment of the fees.

Added by Acts 1989, 71st Leg., ch. 1, Sec. 82(a), eff. Aug. 28, 1989.

Amended by:

Acts 2007, 80th Leg., R.S., Ch. 250 (S.B. 883), Sec. 1, eff. May 25, 2007.

Sec. 395.023. CREDITS AGAINST ROADWAY FACILITIES FEES. Any construction of, contributions to, or dedications of off-site roadway facilities agreed to or required by a political subdivision as a condition of development approval shall be credited against roadway facilities impact fees otherwise due from the development.

Added by Acts 1989, 71st Leg., ch. 1, Sec. 82(a), eff. Aug. 28, 1989.

Sec. 395.024. ACCOUNTING FOR FEES AND INTEREST. (a) The order, ordinance, or resolution levying an impact fee must provide that all funds collected through the adoption of an impact fee shall be deposited in interest-bearing accounts clearly identifying the category of capital

improvements or facility expansions within the service area for which the fee was adopted.

(b) Interest earned on impact fees is considered funds of the account on which it is earned and is subject to all restrictions placed on use of impact fees under this chapter.

(c) Impact fee funds may be spent only for the purposes for which the impact fee was imposed as shown by the capital improvements plan and as authorized by this chapter.

(d) The records of the accounts into which impact fees are deposited shall be open for public inspection and copying during ordinary business hours.

Added by Acts 1989, 71st Leg., ch. 1, Sec. 82(a), eff. Aug. 28, 1989.

Sec. 395.025. REFUNDS. (a) On the request of an owner of the property on which an impact fee has been paid, the political subdivision shall refund the impact fee if existing facilities are available and service is denied or the political subdivision has, after collecting the fee when service was not available, failed to commence construction within two years or service is not available within a reasonable period considering the type of capital improvement or facility expansion to be constructed, but in no event later than five years from the date of payment under Section 395.019(1).

(b) Repealed by Acts 2001, 77th Leg., ch. 345, Sec. 9, eff. Sept. 1, 2001.

(c) The political subdivision shall refund any impact fee or part of it that is not spent as authorized by this chapter within 10 years after the date of payment.

(d) Any refund shall bear interest calculated from the date of collection to the date of refund at the statutory rate as set forth in Section 302.002, Finance Code, or its successor statute.

(e) All refunds shall be made to the record owner of the property at the time the refund is paid. However, if the impact fees were paid by another political subdivision or governmental entity, payment shall be made to the political subdivision or governmental entity.

(f) The owner of the property on which an impact fee has been paid or another political subdivision or governmental entity that paid the impact fee has standing to sue for a refund under this section.

Added by Acts 1989, 71st Leg., ch. 1, Sec. 82(a), eff. Aug. 28, 1989.

Amended by Acts 1997, 75th Leg., ch. 1396, Sec. 37, eff. Sept. 1, 1997;

Acts 1999, 76th Leg., ch. 62, Sec. 7.82, eff. Sept. 1, 1999; Acts 2001, 77th Leg., ch. 345, Sec. 9, eff. Sept. 1, 2001.

SUBCHAPTER C. PROCEDURES FOR ADOPTION OF IMPACT FEE

Sec. 395.041. COMPLIANCE WITH PROCEDURES REQUIRED. Except as otherwise provided by this chapter, a political subdivision must comply with this subchapter to levy an impact fee.

Added by Acts 1989, 71st Leg., ch. 1, Sec. 82(a), eff. Aug. 28, 1989.

Sec. 395.0411. CAPITAL IMPROVEMENTS PLAN. The political subdivision shall provide for a capital improvements plan to be developed by qualified professionals using generally accepted engineering and planning practices in accordance with Section 395.014.

Added by Acts 2001, 77th Leg., ch. 345, Sec. 5, eff. Sept. 1, 2001.

Sec. 395.042. HEARING ON LAND USE ASSUMPTIONS AND CAPITAL IMPROVEMENTS PLAN. To impose an impact fee, a political subdivision must adopt an order, ordinance, or resolution establishing a public hearing date to consider the land use assumptions and capital improvements plan for the designated service area.

Added by Acts 1989, 71st Leg., ch. 1, Sec. 82(a), eff. Aug. 28, 1989.

Amended by Acts 2001, 77th Leg., ch. 345, Sec. 5, eff. Sept. 1, 2001.

Sec. 395.043. INFORMATION ABOUT LAND USE ASSUMPTIONS AND CAPITAL IMPROVEMENTS PLAN AVAILABLE TO PUBLIC. On or before the date of the first publication of the notice of the hearing on the land use assumptions and capital improvements plan, the political subdivision shall make available to the public its land use assumptions, the time period of the projections, and a description of the capital improvement facilities that may be proposed.

Added by Acts 1989, 71st Leg., ch. 1, Sec. 82(a), eff. Aug. 28, 1989.

Amended by Acts 2001, 77th Leg., ch. 345, Sec. 5, eff. Sept. 1, 2001.

Sec. 395.044. NOTICE OF HEARING ON LAND USE ASSUMPTIONS AND CAPITAL IMPROVEMENTS PLAN. (a) Before the 30th day before the date of the hearing on the land use assumptions and capital improvements plan, the political

subdivision shall send a notice of the hearing by certified mail to any person who has given written notice by certified or registered mail to the municipal secretary or other designated official of the political subdivision requesting notice of the hearing within two years preceding the date of adoption of the order, ordinance, or resolution setting the public hearing.

(b) The political subdivision shall publish notice of the hearing before the 30th day before the date set for the hearing, in one or more newspapers of general circulation in each county in which the political subdivision lies. However, a river authority that is authorized elsewhere by state law to charge fees that function as impact fees may publish the required newspaper notice only in each county in which the service area lies.

(c) The notice must contain:

(1) a headline to read as follows:

"NOTICE OF PUBLIC HEARING ON LAND USE ASSUMPTIONS AND CAPITAL IMPROVEMENTS PLAN RELATING TO POSSIBLE ADOPTION OF IMPACT FEES"

(2) the time, date, and location of the hearing;

(3) a statement that the purpose of the hearing is to consider the land use assumptions and capital improvements plan under which an impact fee may be imposed; and

(4) a statement that any member of the public has the right to appear at the hearing and present evidence for or against the land use assumptions and capital improvements plan.

Added by Acts 1989, 71st Leg., ch. 1, Sec. 82(a), eff. Aug. 28, 1989.

Amended by Acts 2001, 77th Leg., ch. 345, Sec. 5, eff. Sept. 1, 2001.

Sec. 395.045. APPROVAL OF LAND USE ASSUMPTIONS AND CAPITAL IMPROVEMENTS PLAN REQUIRED. (a) After the public hearing on the land use assumptions and capital improvements plan, the political subdivision shall determine whether to adopt or reject an ordinance, order, or resolution approving the land use assumptions and capital improvements plan.

(b) The political subdivision, within 30 days after the date of the public hearing, shall approve or disapprove the land use assumptions and capital improvements plan.

(c) An ordinance, order, or resolution approving the land use assumptions and capital improvements plan may not be adopted as an emergency measure.

Added by Acts 1989, 71st Leg., ch. 1, Sec. 82(a), eff. Aug. 28, 1989.

Amended by Acts 2001, 77th Leg., ch. 345, Sec. 5, eff. Sept. 1, 2001.

Sec. 395.0455. SYSTEMWIDE LAND USE ASSUMPTIONS. (a) In lieu of adopting land use assumptions for each service area, a political subdivision may, except for storm water, drainage, flood control, and roadway facilities, adopt systemwide land use assumptions, which cover all of the area subject to the jurisdiction of the political subdivision for the purpose of imposing impact fees under this chapter.

(b) Prior to adopting systemwide land use assumptions, a political subdivision shall follow the public notice, hearing, and other requirements for adopting land use assumptions.

(c) After adoption of systemwide land use assumptions, a political subdivision is not required to adopt additional land use assumptions for a service area for water supply, treatment, and distribution facilities or wastewater collection and treatment facilities as a prerequisite to the adoption of a capital improvements plan or impact fee, provided the capital improvements plan and impact fee are consistent with the systemwide land use assumptions.

Added by Acts 1989, 71st Leg., ch. 566, Sec. 1(b), eff. Aug. 28, 1989.

Sec. 395.047. HEARING ON IMPACT FEE. On adoption of the land use assumptions and capital improvements plan, the governing body shall adopt an order or resolution setting a public hearing to discuss the imposition of the impact fee. The public hearing must be held by the governing body of the political subdivision to discuss the proposed ordinance, order, or resolution imposing an impact fee.

Added by Acts 1989, 71st Leg., ch. 1, Sec. 82(a), eff. Aug. 28, 1989.

Amended by Acts 2001, 77th Leg., ch. 345, Sec. 5, eff. Sept. 1, 2001.

Sec. 395.049. NOTICE OF HEARING ON IMPACT FEE. (a) Before the 30th day before the date of the hearing on the imposition of an impact fee, the political subdivision shall send a notice of the hearing by certified mail to any person who has given written notice by certified or registered mail to the municipal secretary or other designated official of the political subdivision requesting notice of the hearing within two years preceding the date of adoption of the order or resolution setting the public hearing.

(b) The political subdivision shall publish notice of the hearing before the 30th day before the date set for the hearing, in one or more newspapers of general circulation in each county in which the political subdivision lies. However, a river authority that is authorized elsewhere by state law to charge fees that function as impact fees may publish the required newspaper notice only in each county in which the service area lies.

(c) The notice must contain the following:

(1) a headline to read as follows:

"NOTICE OF PUBLIC HEARING ON ADOPTION OF IMPACT FEES"

(2) the time, date, and location of the hearing;

(3) a statement that the purpose of the hearing is to consider the adoption of an impact fee;

(4) the amount of the proposed impact fee per service unit; and

(5) a statement that any member of the public has the right to appear at the hearing and present evidence for or against the plan and proposed fee.

Added by Acts 1989, 71st Leg., ch. 1, Sec. 82(a), eff. Aug. 28, 1989.

Amended by Acts 2001, 77th Leg., ch. 345, Sec. 5, eff. Sept. 1, 2001.

Sec. 395.050. ADVISORY COMMITTEE COMMENTS ON IMPACT FEES. The advisory committee created under Section 395.058 shall file its written comments on the proposed impact fees before the fifth business day before the date of the public hearing on the imposition of the fees.

Added by Acts 1989, 71st Leg., ch. 1, Sec. 82(a), eff. Aug. 28, 1989.

Amended by Acts 2001, 77th Leg., ch. 345, Sec. 5, eff. Sept. 1, 2001.

Sec. 395.051. APPROVAL OF IMPACT FEE REQUIRED. (a) The political subdivision, within 30 days after the date of the public hearing on the imposition of an impact fee, shall approve or disapprove the imposition of an impact fee.

(b) An ordinance, order, or resolution approving the imposition of an impact fee may not be adopted as an emergency measure.

Added by Acts 1989, 71st Leg., ch. 1, Sec. 82(a), eff. Aug. 28, 1989.

Amended by Acts 2001, 77th Leg., ch. 345, Sec. 5, eff. Sept. 1, 2001.

Sec. 395.052. PERIODIC UPDATE OF LAND USE ASSUMPTIONS AND CAPITAL IMPROVEMENTS PLAN REQUIRED. (a) A political subdivision imposing an impact fee shall update the land use assumptions and capital improvements plan at least every five years. The initial five-year period begins on the day the capital improvements plan is adopted.

(b) The political subdivision shall review and evaluate its current land use assumptions and shall cause an update of the capital improvements plan to be prepared in accordance with Subchapter B.

Added by Acts 1989, 71st Leg., ch. 1, Sec. 82(a), eff. Aug. 28, 1989.

Amended by Acts 2001, 77th Leg., ch. 345, Sec. 6, eff. Sept. 1, 2001.

Sec. 395.053. HEARING ON UPDATED LAND USE ASSUMPTIONS AND CAPITAL IMPROVEMENTS PLAN. The governing body of the political subdivision shall, within 60 days after the date it receives the update of the land use assumptions and the capital improvements plan, adopt an order setting a public hearing to discuss and review the update and shall determine whether to amend the plan.

Added by Acts 1989, 71st Leg., ch. 1, Sec. 82(a), eff. Aug. 28, 1989.

Sec. 395.054. HEARING ON AMENDMENTS TO LAND USE ASSUMPTIONS, CAPITAL IMPROVEMENTS PLAN, OR IMPACT FEE. A public hearing must be held by the governing body of the political subdivision to discuss the proposed ordinance, order, or resolution amending land use assumptions, the capital improvements plan, or the impact fee. On or before the date of the first publication of the notice of the hearing on the amendments, the land use assumptions and the capital improvements plan, including the amount of any proposed amended impact fee per service unit, shall be made available to the public.

Added by Acts 1989, 71st Leg., ch. 1, Sec. 82(a), eff. Aug. 28, 1989.

Sec. 395.055. NOTICE OF HEARING ON AMENDMENTS TO LAND USE ASSUMPTIONS, CAPITAL IMPROVEMENTS PLAN, OR IMPACT FEE. (a) The notice and hearing procedures prescribed by Sections 395.044(a) and (b) apply to a hearing on the amendment of land use assumptions, a capital improvements plan, or an impact fee.

(b) The notice of a hearing under this section must contain the following:

(1) a headline to read as follows:

"NOTICE OF PUBLIC HEARING ON AMENDMENT OF IMPACT FEES"

(2) the time, date, and location of the hearing;

(3) a statement that the purpose of the hearing is to consider the amendment of land use assumptions and a capital improvements plan and the imposition of an impact fee; and

(4) a statement that any member of the public has the right to appear at the hearing and present evidence for or against the update.

Added by Acts 1989, 71st Leg., ch. 1, Sec. 82(a), eff. Aug. 28, 1989.

Amended by Acts 2001, 77th Leg., ch. 345, Sec. 7, eff. Sept. 1, 2001.

Sec. 395.056. ADVISORY COMMITTEE COMMENTS ON AMENDMENTS. The advisory committee created under Section 395.058 shall file its written comments on the proposed amendments to the land use assumptions, capital improvements plan, and impact fee before the fifth business day before the date of the public hearing on the amendments.

Added by Acts 1989, 71st Leg., ch. 1, Sec. 82(a), eff. Aug. 28, 1989.

Sec. 395.057. APPROVAL OF AMENDMENTS REQUIRED. (a) The political subdivision, within 30 days after the date of the public hearing on the amendments, shall approve or disapprove the amendments of the land use assumptions and the capital improvements plan and modification of an impact fee.

(b) An ordinance, order, or resolution approving the amendments to the land use assumptions, the capital improvements plan, and imposition of an impact fee may not be adopted as an emergency measure.

Added by Acts 1989, 71st Leg., ch. 1, Sec. 82(a), eff. Aug. 28, 1989.

Sec. 395.0575. DETERMINATION THAT NO UPDATE OF LAND USE ASSUMPTIONS, CAPITAL IMPROVEMENTS PLAN OR IMPACT FEES IS NEEDED. (a) If, at the time an update under Section 395.052 is required, the governing body determines that no change to the land use assumptions, capital improvements plan, or impact fee is needed, it may, as an alternative to the updating requirements of Sections 395.052-395.057, do the following:

(1) The governing body of the political subdivision shall, upon determining that an update is unnecessary and 60 days before publishing the final notice under this section, send notice of its determination not to update the land use assumptions, capital improvements plan, and impact fee

by certified mail to any person who has, within two years preceding the date that the final notice of this matter is to be published, give written notice by certified or registered mail to the municipal secretary or other designated official of the political subdivision requesting notice of hearings related to impact fees. The notice must contain the information in Subsections (b) (2)-(5).

(2) The political subdivision shall publish notice of its determination once a week for three consecutive weeks in one or more newspapers with general circulation in each county in which the political subdivision lies. However, a river authority that is authorized elsewhere by state law to charge fees that function as impact fees may publish the required newspaper notice only in each county in which the service area lies. The notice of public hearing may not be in the part of the paper in which legal notices and classified ads appear and may not be smaller than one-quarter page of a standard-size or tabloid-size newspaper, and the headline on the notice must be in 18-point or larger type.

(b) The notice must contain the following:

(1) a headline to read as follows:

"NOTICE OF DETERMINATION NOT TO UPDATE

LAND USE ASSUMPTIONS, CAPITAL IMPROVEMENTS

PLAN, OR IMPACT FEES";

(2) a statement that the governing body of the political subdivision has determined that no change to the land use assumptions, capital improvements plan, or impact fee is necessary;

(3) an easily understandable description and a map of the service area in which the updating has been determined to be unnecessary;

(4) a statement that if, within a specified date, which date shall be at least 60 days after publication of the first notice, a person makes a written request to the designated official of the political subdivision requesting that the land use assumptions, capital improvements plan, or impact fee be updated, the governing body must comply with the request by following the requirements of Sections 395.052-395.057; and

(5) a statement identifying the name and mailing address of the official of the political subdivision to whom a request for an update should be sent.

(c) The advisory committee shall file its written comments on the need for updating the land use assumptions, capital improvements plans, and

impact fee before the fifth business day before the earliest notice of the government's decision that no update is necessary is mailed or published.

(d) If, by the date specified in Subsection (b) (4), a person requests in writing that the land use assumptions, capital improvements plan, or impact fee be updated, the governing body shall cause an update of the land use assumptions and capital improvements plan to be prepared in accordance with Sections 395.052-395.057.

(e) An ordinance, order, or resolution determining the need for updating land use assumptions, a capital improvements plan, or an impact fee may not be adopted as an emergency measure.

Added by Acts 1989, 71st Leg., ch. 566, Sec. 1(d), eff. Aug. 28, 1989.

Sec. 395.058. ADVISORY COMMITTEE. (a) On or before the date on which the order, ordinance, or resolution is adopted under Section 395.042, the political subdivision shall appoint a capital improvements advisory committee.

(b) The advisory committee is composed of not less than five members who shall be appointed by a majority vote of the governing body of the political subdivision. Not less than 40 percent of the membership of the advisory committee must be representatives of the real estate, development, or building industries who are not employees or officials of a political subdivision or governmental entity. If the political subdivision has a planning and zoning commission, the commission may act as the advisory committee if the commission includes at least one representative of the real estate, development, or building industry who is not an employee or official of a political subdivision or governmental entity. If no such representative is a member of the planning and zoning commission, the commission may still act as the advisory committee if at least one such representative is appointed by the political subdivision as an ad hoc voting member of the planning and zoning commission when it acts as the advisory committee. If the impact fee is to be applied in the extraterritorial jurisdiction of the political subdivision, the membership must include a representative from that area.

(c) The advisory committee serves in an advisory capacity and is established to:

- (1) advise and assist the political subdivision in adopting land use assumptions;
- (2) review the capital improvements plan and file written comments;

(3) monitor and evaluate implementation of the capital improvements plan;

(4) file semiannual reports with respect to the progress of the capital improvements plan and report to the political subdivision any perceived inequities in implementing the plan or imposing the impact fee; and

(5) advise the political subdivision of the need to update or revise the land use assumptions, capital improvements plan, and impact fee.

(d) The political subdivision shall make available to the advisory committee any professional reports with respect to developing and implementing the capital improvements plan.

(e) The governing body of the political subdivision shall adopt procedural rules for the advisory committee to follow in carrying out its duties.

Added by Acts 1989, 71st Leg., ch. 1, Sec. 82(a), eff. Aug. 28, 1989.

SUBCHAPTER D. OTHER PROVISIONS

Sec. 395.071. DUTIES TO BE PERFORMED WITHIN TIME LIMITS. If the governing body of the political subdivision does not perform a duty imposed under this chapter within the prescribed period, a person who has paid an impact fee or an owner of land on which an impact fee has been paid has the right to present a written request to the governing body of the political subdivision stating the nature of the unperformed duty and requesting that it be performed within 60 days after the date of the request. If the governing body of the political subdivision finds that the duty is required under this chapter and is late in being performed, it shall cause the duty to commence within 60 days after the date of the request and continue until completion.

Added by Acts 1989, 71st Leg., ch. 1, Sec. 82(a), eff. Aug. 28, 1989.

Sec. 395.072. RECORDS OF HEARINGS. A record must be made of any public hearing provided for by this chapter. The record shall be maintained and be made available for public inspection by the political subdivision for at least 10 years after the date of the hearing.

Added by Acts 1989, 71st Leg., ch. 1, Sec. 82(a), eff. Aug. 28, 1989.

Sec. 395.073. CUMULATIVE EFFECT OF STATE AND LOCAL RESTRICTIONS. Any state or local restrictions that apply to the imposition of an impact fee in a political subdivision where an impact fee is proposed are cumulative with the restrictions in this chapter.

Added by Acts 1989, 71st Leg., ch. 1, Sec. 82(a), eff. Aug. 28, 1989.

Sec. 395.074. PRIOR IMPACT FEES REPLACED BY FEES UNDER THIS CHAPTER. An impact fee that is in place on June 20, 1987, must be replaced by an impact fee made under this chapter on or before June 20, 1990. However, any political subdivision having an impact fee that has not been replaced under this chapter on or before June 20, 1988, is liable to any party who, after June 20, 1988, pays an impact fee that exceeds the maximum permitted under Subchapter B by more than 10 percent for an amount equal to two times the difference between the maximum impact fee allowed and the actual impact fee imposed, plus reasonable attorney's fees and court costs.

Added by Acts 1989, 71st Leg., ch. 1, Sec. 82(a), eff. Aug. 28, 1989.

Sec. 395.075. NO EFFECT ON TAXES OR OTHER CHARGES. This chapter does not prohibit, affect, or regulate any tax, fee, charge, or assessment specifically authorized by state law.

Added by Acts 1989, 71st Leg., ch. 1, Sec. 82(a), eff. Aug. 28, 1989.

Sec. 395.076. MORATORIUM ON DEVELOPMENT PROHIBITED. A moratorium may not be placed on new development for the purpose of awaiting the completion of all or any part of the process necessary to develop, adopt, or update land use assumptions, a capital improvements plan, or an impact fee.

Added by Acts 1989, 71st Leg., ch. 1, Sec. 82(a), eff. Aug. 28, 1989.

Amended by Acts 2001, 77th Leg., ch. 441, Sec. 2, eff. Sept. 1, 2001.

Sec. 395.077. APPEALS. (a) A person who has exhausted all administrative remedies within the political subdivision and who is aggrieved by a final decision is entitled to trial de novo under this chapter.

(b) A suit to contest an impact fee must be filed within 90 days after the date of adoption of the ordinance, order, or resolution establishing the impact fee.

(c) Except for roadway facilities, a person who has paid an impact fee or an owner of property on which an impact fee has been paid is entitled to specific performance of the services by the political subdivision for which the fee was paid.

(d) This section does not require construction of a specific facility to provide the services.

(e) Any suit must be filed in the county in which the major part of the land area of the political subdivision is located. A successful litigant shall be entitled to recover reasonable attorney's fees and court costs.

Added by Acts 1989, 71st Leg., ch. 1, Sec. 82(a), eff. Aug. 28, 1989.

Sec. 395.078. SUBSTANTIAL COMPLIANCE WITH NOTICE REQUIREMENTS. An impact fee may not be held invalid because the public notice requirements were not complied with if compliance was substantial and in good faith.

Added by Acts 1989, 71st Leg., ch. 1, Sec. 82(a), eff. Aug. 28, 1989.

Sec. 395.079. IMPACT FEE FOR STORM WATER, DRAINAGE, AND FLOOD CONTROL IN POPULOUS COUNTY. (a) Any county that has a population of 3.3 million or more or that borders a county with a population of 3.3 million or more, and any district or authority created under Article XVI, Section 59, of the Texas Constitution within any such county that is authorized to provide storm water, drainage, and flood control facilities, is authorized to impose impact fees to provide storm water, drainage, and flood control improvements necessary to accommodate new development.

(b) The imposition of impact fees authorized by Subsection (a) is exempt from the requirements of Sections 395.025, 395.052-395.057, and 395.074 unless the political subdivision proposes to increase the impact fee.

(c) Any political subdivision described by Subsection (a) is authorized to pledge or otherwise contractually obligate all or part of the impact fees to the payment of principal and interest on bonds, notes, or other obligations issued or incurred by or on behalf of the political subdivision and to the payment of any other contractual obligations.

(d) An impact fee adopted by a political subdivision under Subsection (a) may not be reduced if:

(1) the political subdivision has pledged or otherwise contractually obligated all or part of the impact fees to the payment of

principal and interest on bonds, notes, or other obligations issued by or on behalf of the political subdivision; and

(2) the political subdivision agrees in the pledge or contract not to reduce the impact fees during the term of the bonds, notes, or other contractual obligations.

Added by Acts 1989, 71st Leg., ch. 1, Sec. 82(a), eff. Aug. 28, 1989.

Amended by Acts 2001, 77th Leg., ch. 669, Sec. 107, eff. Sept. 1, 2001.

Sec. 395.080. CHAPTER NOT APPLICABLE TO CERTAIN WATER-RELATED SPECIAL DISTRICTS. (a) This chapter does not apply to impact fees, charges, fees, assessments, or contributions:

(1) paid by or charged to a district created under Article XVI, Section 59, of the Texas Constitution to another district created under that constitutional provision if both districts are required by law to obtain approval of their bonds by the Texas Natural Resource Conservation Commission; or

(2) charged by an entity if the impact fees, charges, fees, assessments, or contributions are approved by the Texas Natural Resource Conservation Commission.

(b) Any district created under Article XVI, Section 59, or Article III, Section 52, of the Texas Constitution may petition the Texas Natural Resource Conservation Commission for approval of any proposed impact fees, charges, fees, assessments, or contributions. The commission shall adopt rules for reviewing the petition and may charge the petitioner fees adequate to cover the cost of processing and considering the petition. The rules shall require notice substantially the same as that required by this chapter for the adoption of impact fees and shall afford opportunity for all affected parties to participate.

Added by Acts 1989, 71st Leg., ch. 1, Sec. 82(a), eff. Aug. 28, 1989.

Amended by Acts 1995, 74th Leg., ch. 76, Sec. 11.257, eff. Sept. 1, 1995.

Sec. 395.081. FEES FOR ADJOINING LANDOWNERS IN CERTAIN MUNICIPALITIES. (a) This section applies only to a municipality with a population of 115,000 or less that constitutes more than three-fourths of the population of the county in which the majority of the area of the municipality is located.

(b) A municipality that has not adopted an impact fee under this chapter that is constructing a capital improvement, including sewer or waterline or drainage or roadway facilities, from the municipality to a

development located within or outside the municipality's boundaries, in its discretion, may allow a landowner whose land adjoins the capital improvement or is within a specified distance from the capital improvement, as determined by the governing body of the municipality, to connect to the capital improvement if:

(1) the governing body of the municipality has adopted a finding under Subsection (c); and

(2) the landowner agrees to pay a proportional share of the cost of the capital improvement as determined by the governing body of the municipality and agreed to by the landowner.

(c) Before a municipality may allow a landowner to connect to a capital improvement under Subsection (b), the municipality shall adopt a finding that the municipality will benefit from allowing the landowner to connect to the capital improvement. The finding shall describe the benefit to be received by the municipality.

(d) A determination of the governing body of a municipality, or its officers or employees, under this section is a discretionary function of the municipality and the municipality and its officers or employees are not liable for a determination made under this section.

Added by Acts 1997, 75th Leg., ch. 1150, Sec. 1, eff. June 19, 1997.

Amended by:

Acts 2011, 82nd Leg., R.S., Ch. 1043 (H.B. 3111), Sec. 5, eff. June 17, 2011.

Acts 2011, 82nd Leg., R.S., Ch. 1163 (H.B. 2702), Sec. 100, eff. September 1, 2011.