

Geophysical Survey at James Polk Johnson Cemetery

Report Submitted To:

Johnson City
Attn: Rick Schroder

June 12th, 2023



Texas Cemetery Restoration LLC
1710 SE Loop 304
Suite 200
Crockett, Texas 75835
www.texascemeteryrestoration.com

214.686.0014
214.476.8654

Introduction

Texas Cemetery Restoration collected approximately 0.85 acres of Ground Penetrating Radar (GPR) data at James Polk Johnson Cemetery in Blanco County, Texas. A total of eight (8) possible unmarked graves were located within the survey area (Attached map). The coordinates of the unmarked graves are presented in Table 1. These coordinates are in Latitude and Longitude.

Geophysical Survey Investigations in Archaeology

Geophysical survey investigations have become an important part of the pursuit of North American archaeology and employ a range of techniques for the non-destructive prospecting of archaeological deposits (Gaffney and Gater 2003; Kvamme 2008). Several techniques have been derived from geophysical prospecting and adopted for archaeological investigations through rigorous field collection techniques and unique data processing programs specifically developed for the study of the archaeogeophysical record. (Clark 2000; Kvamme 2003). Techniques used mostly for archaeological research include soil resistivity, soil conductivity, magnetic susceptibility, magnetometry, and ground-penetrating radar (GPR) (Clark 2000; Kvamme 2003).

All produce different results and require different equipment. Magnetometers record the net sum of all magnetic fields, both induced and remnant; GPR records relative dielectric permittivity; and electromagnetic induction meters record both the conductivity of the soils as well as their induced magnetic properties (magnetic susceptibility). The geophysical instruments are differentially affected by variables such as moisture, metal trash or debris, and the transmission of signals such as cell phones and transmission lines. Data collection is also impacted differently for each of the geophysical instruments by physical impediments such as trees, pavement, fences, and vegetation. The different geophysical techniques that have been used in archaeology have been discussed in a number of seminal books and journal articles (Bevan 1998; Clark 1990; Conyers 2004; Gaffney 2008; Gaffney and Gater 2003; Scollar et al. 1990; Weymouth 1986; Witten 2006).

Ground Penetrating Radar

GPR is an active, non-invasive technique that uses a shielded surface antenna to transmit pulses of radar energy, generally high-frequency electromagnetic (EM) waves, that reflect off of buried objects, features, or geological bedding contacts and are detected using a receiving antenna (Conyers 2004:23-28). The waves detected by the receiving antenna are recorded in nano seconds (ns), which reflect the two-way travel time of the radar energy. Fairly accurate approximations of depth of recorded anomalies can be determined through velocity analysis (Conyers and Lucius 1996).

While GPR is one of the more widely used techniques in archeological geophysics, its success, like that of the other archeological geophysics techniques, is largely based on such site conditions as soil type, sediment mineralogy, and moisture content (Conyers 2004; Kvamme 2003). For example, ideal soil types for GPR include dry homogenous soils with minimal clay. On the other extreme, radar energy will become attenuated more quickly in more conductive mediums such as clay and poorly drained soils or in mediums with high magnetic permeability (Conyers 2004).

When site conditions are appropriate, GPR has been shown to be one of the most effective geophysical methods for locating unmarked graves and delineating historic cemeteries (Conyers 2004). GPR can be employed to detect the buried coffin or vault as well as disturbed soils related to the burial activities (i.e., the grave shaft) and possible reflections from other remains of the burial (i.e., coffin hardware, grave goods, voids). **The presence of false negative results are always possible, even in soils with good signal penetration. GPR cannot be used as the sole technique for determining the presence or absence of unmarked graves. Ground based manual excavation is always needed to “ground truth” GPR data.**

GPR Data Processing

The initial data processing involved the generation of amplitude slice-maps (Conyers 2004). Amplitude slice-maps are a three-dimensional tool for viewing differences in reflected amplitudes across a given surface at various depths. Reflected radar amplitudes are of interest because they measure the degree of physical and chemical differences in the buried materials. Strong, or high amplitude reflections often indicate denser buried materials, such as burials. Amplitude slice-maps are generated through comparison of reflected amplitudes between raw vertical profiles. In this method, amplitude variations recorded as digital values are analyzed at each location in a grid where there is a reflection recorded. The amplitudes of all traces are compared to the amplitudes of all nearby traces along that profile. This database can then be “sliced” horizontally and displayed to show the variation in reflection amplitudes at a sequence of depths in the ground. The produced result is a map that shows amplitudes in map view, but also with depth. Often when this is done, changes in the soil related to disturbances such as burials become apparent, making them visible to the human eye.

From the original dzt files (raw data), a series of image files were created for cross-referencing to the amplitude slice-maps that were produced. Two-dimensional reflection profiles are analyzed to determine validity of the features identified on the amplitude slice-maps. The reflection profiles show the geometry of the reflections, which can lend insight into whether the radar energy is reflecting from a flat layer (seen as a distinct band on profile) versus a single object or burial (seen as a hyperbola in profile). Using these profiles to confirm or refute ideas about the nature of buried materials seen in the three-dimensional slice maps, unmarked burials were then delineated at the cemetery.

Unmarked graves are located by analyzing the individual GPR profiles (or radargrams). Unmarked graves can create many different types of signatures in profile. Their variation depends on several different factors including the age of the grave, the physical nature of the grave (coffin, vault, depth, and state of decay) as well as the soil conductivity (higher soil conductivity typically attenuates radar energy more quickly). Locating unmarked burials is done by plotting anomalies in the individual GPR profiles then projecting these points in autocadd. This allows you to see the overall pattern of anomalies. Groups of anomalies that fit known patterns – such as the east/west orientation of most cemeteries – are then used to help determine the presence or absence of unmarked graves. Unmarked graves that do not fit the overall pattern of a cemetery can be missed and objects that appear to fit the overall pattern of a cemetery can be misinterpreted.

Survey Results

A total of eight (8) possible unmarked were recorded (Table 1 and attached map). Figure 1 is an example of a GPR profile with a grave legible in the data.

Figure 1. Interpretation of GPR data showing location of possible unmarked graves.

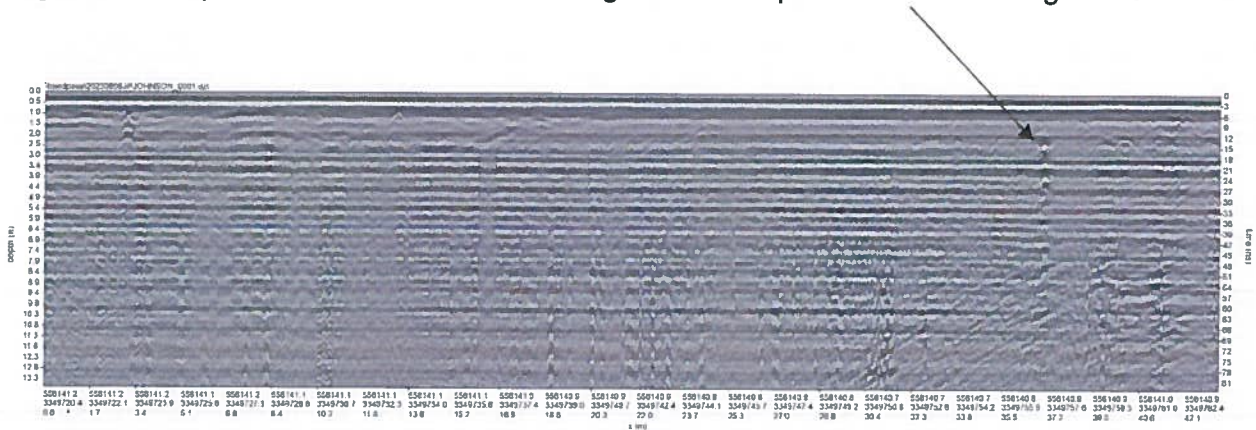


Table 1. Unmarked Grave Locations

LABEL	LONGITUDE	LATITUDE
GPR-A1	-98.41624697	30.27789533
GPR-A3	-98.41612273	30.27788561
GPR-B1	-98.41625321	30.27798662
GPR-E4	-98.41601237	30.27816918
GPR-F1	-98.41628523	30.27824392
GPR-F5	-98.41596904	30.27821808
GPR-I-4	-98.4160329	30.27842456
GPR-I-6	-98.41588816	30.27846245

References

Bevan, Bruce M

1983 Electromagnetics for Mapping Buried Earth Features. *Journal of Field Archaeology* 10:47-54.

Clark, A.

1990 *Seeing Beneath the Soil: Prospecting Methods in Archaeology*. Routledge, London.

Conyers, Lawrence B.

2004 *Ground-Penetrating Radar for Archaeology*. AltaMira Press, Walnut Creek, California.

Conyers, Lawrence B. and Jeffrey E. Lucius

1996 Velocity Analysis in Archaeological Ground-Penetrating Radar Studies. *Archaeological Prospection* 3(1):25-38.

Dabas, M. and A. Tabbagh

2000 Magnetic Prospecting. In *Archaeological Method and Theory: An Encyclopedia*, edited by L. Ellis, pp. 335-339. Garland, New York.

David, A.

1995 *Geophysical Survey in Archaeological Field Evaluation*. Ancient Monuments Laboratory, English Heritage Society, London.

Gaffney, C.

2008 Detecting Trends in the Prediction of the Buried Past: A Review of Geophysical Techniques in Archaeology. *Archaeometry* 50 (2):313-336.

Gaffney, C. and J. Gater

2003 *Revealing the Buried Past: Geophysics for Archaeologists*. Tempus, Gloucestershire, England.

Gaffney, C., J. A. Gater, P. Linford, V. Gaffney, and R. White

2000 Large-Scale Systematic Fluxgate Gradiometry at the Roman City of Wroxeter. *Archaeological Prospection* 7:81-99.

Kvamme, K.

2003 Geophysical Surveys as Landscape Archaeology. *American Antiquity* 68:435-457.

2008 Remote Sensing Approaches to Archaeological Reasoning: Pattern Recognition and Physical Principles. In *Archaeological Concepts for the Study of the Cultural Past*, edited by A. P. Sullivan III, pp. 65-84. The University of Utah Press, Salt Lake City.

Milsom, J.

2005 *Field Geophysics: The Geological Field Guide Series*. Third edition. Wiley, West Sussex, England.

Scollar, I., A. Tabbagh, A. Hesse, and I. Herzog

1990 *Archaeological Prospecting and Remote Sensing*. *Topics in Remote Sensing*, No. 2, G. Hunt and M. Rycroft, series editors. Cambridge University Press, Cambridge.

Weymouth, J.

1986 *Geophysical Methods of Archaeological Site Surveying*. In *Advances in Archaeological Method and Theory*, Volume 9, edited by M. B. Schiffer, pp. 311-396. Academic Press, Inc., New York.

Witten, A. J.

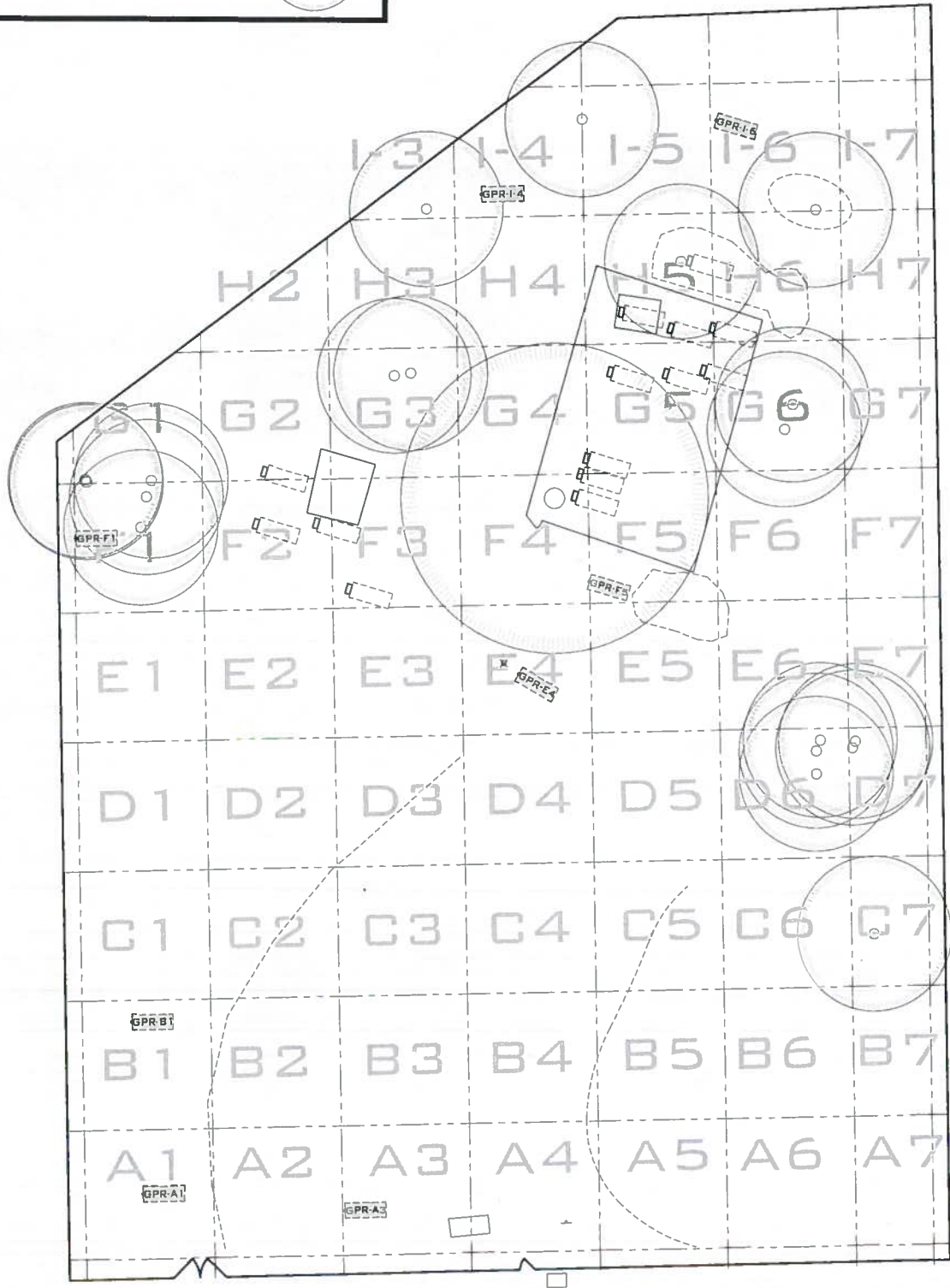
2006 *Handbook of Geophysics and Archaeology*. Equinox Publishing, London.

MAP LEGEND

EXISTING MARKED BURIALS 

POSSIBLE BURIALS LOCATED WITH GPR 

EXISTING TREES 



JP JOHNSON CEMETERY

BLANCO COUNTY, TEXAS

SECTION:
SCALE: 1" = 20'-0"

MAP DRAWN BY TEXAS CEMETERY RESTORATION LLC



Texas Cemetery Restoration LLC

J. R. Brenner Owner/Craftsperson

1710 SE Loop 304

Crockett, Texas 75835

(214) 686-0014 Cell

www.texascemeteryrestoration.com

James Polk Johnson Cemetery Monument Restoration Quote 2023-06

Leveling + Cleaning	\$ 1,998.20
Repairs	\$ 1,000.00
Travel Surcharge	\$ 1,000.00
Total	<u>\$ 3,998.20</u> * †
Down Payment	_____
Balance	<i>(Due upon completion)*</i>

Please make check payable to Texas Cemetery Restoration LLC

Signature: _____

(Must be signed by an officer of the listed Cemetery Association)

**Any additional work that is not listed on the detailed bid sheet will be added to final payment and work not needed will be deducted from final payment.*

† Pricing is based on a \$7,000 minimum job size

James P. Johnson Cemetery Monument Restoration Quote 2023-06

provided by

Texas Cemetery Restoration LLC

G	Sur Name	First Name 1	Monument Size (xyz) ft	Leveling + Cleaning	Repair	Subtotal	Conserv. Priority
10	BOND	SOLOMON	1.33x1.33x4	\$269.60		\$269.60	2
9	BROWN	BELVA	1.33x1.33x3.5	\$239.60		\$239.60	1
1	DOCKERY	ARTHUR E.	3x7x2	\$50.00	\$200.00	\$250.00	3
5	JOHNSON	INFANT	1.2x1.2x3.5	\$224.00	\$350.00	\$574.00	1
2	JOHNSON	JAMES P.	2x1x3	\$230.00		\$230.00	2
3	JOHNSON	JULIA A.	2x1x2	\$170.00		\$170.00	1
4	JOHNSON	MARK	2x1x2	\$170.00		\$170.00	2
8	JOHNSON	ROY	1.5x0.8x1.75	\$170.00		\$170.00	1
7	JOHNSON	ZOUNAH	2x1x3.25	\$245.00	\$175.00	\$420.00	1
6	WITHERS	BOBER T. LEE	2x1x3	\$230.00	\$275.00	\$505.00	1

Texas Cemetery Restoration LLC

Monument Conservation Descriptions

Priority 1 Monuments

Any monument that has a loose top, has fallen over, or is broken in multiple pieces. These monuments should be restored as soon as possible.

Priority 2 Monuments

Any monument that has a secure top but is leaning severely, any of the old tablet or obelisk monuments that are extremely dirty and unlevel, any flat monument that is sunken into the ground and has a chance of being lost. These monuments should be restored within a 2-3 years from time of assessment.

Priority 3 Monuments

All the remaining monuments that do fall into priority 1 or 2. These monuments may require leveling and cleaning but not immediately. These monuments should be reviewed every 3-5 years to see if anything changed and requires restoration

Monument Style Descriptions

Historic

Any monument that was hand carved or chiseled by a professional to create the design and words on the stone. Typically made out of softer stone like marble and limestone

Modern

Any monument that was pneumatically blasted with sand by a professional to create the design and words on the stone. Typically made out of granite and harder stone.

Homemade

Any monument that was made by a loved one that is not in the monument profession and using any material they are comfortable with using. Typically concrete, wood, or metal

TEXAS CEMETERY RESTORATION LLC



CEMETERY:		JAMES POLK JOHNSON	
CITY/COMMUNITY		JOHNSON CITY	
COUNTY	BLANCO	SECTION	
STATE	TEXAS	ROW	
DATE	06/2023	GRAVE	10
LONGITUDE			
LATITUDE			

SURNAME	BOND
FIRST NAME 1	SOLOMON
FIRST NAME 2	

MONUMENT DESCRIPTION

Monument Type	Pedestal Obelisk
Monument Style	Historic
Material of Top/Color	Concrete/gray
Material of Base	Concrete/gray
Footstone Quantity	

CONSERVATION PRIORITY

Priority (1-3)	2
1 = Immediate attention	
2 = Needs attention in 2-3 years	
3 = Should be reevaluated in 3-5 years	

MONUMENT SIZE (Feet)

Monument Width	1.33
Monument Depth	1.33
Monument Height	4

REPAIR RECOMMENDATIONS

--

MONUMENT CONDITION

Levelness	Unlevel
Monument Position 1	Severely leaning
Monument Position 2	
Security of Top	Secure
Needs Cleaning	Yes
Soil Severity (1-5) <small>5 = very soiled</small>	3
Soiling Type 1	biological growth
Soiling Type 2	soiling

LEVELING + CLEANING RECOMMENDATIONS

Safely lift monument from current position
Remove old foundation and replace with suitable foundation for monument type and size
Level monument base and align with neighboring monuments
Remove all failed setting masonry and compounds and replace the setting material
Safely clean monument with appropriate cleaning solution and technique

PRICING: Pricing is valid until 06/30/2024

Leveling	\$269.60
Repairs	\$0.00
Total + local tax	\$269.60

COMMENTS

Prices listed above are based on a project size totalling \$7,000 or more. All information given and and recommendations made herein are believed to be accurate, but not guaranteed. Texas Cemetery Restoration LLC
--



Texas Cemetery Restoration LLC
 James "Rusty" Brenner - Owner/Craftsman 214.686.0014
 Daniel Kieninger - Craftsman 214.476.8654

TEXAS CEMETERY RESTORATION LLC



MONUMENT DESCRIPTION

Monument Type	Pedestal Obelisk
Monument Style	Historic
Material of Top/Color	Marble/White
Material of Base	Limestone/White
Footstone Quantity	

MONUMENT SIZE (Feet)

Monument Width	1.33
Monument Depth	1.33
Monument Height	3.5

MONUMENT CONDITION

Levelness	Unlevel
Monument Position 1	Tilted
Monument Position 2	Sunken
Security of Top	Loose
Needs Cleaning	Yes
Soil Severity (1-5) <small>5 = very soiled</small>	3
Soiling Type 1	biological growth
Soiling Type 2	soiling



Texas Cemetery Restoration LLC
 James "Rusty" Brenner - Owner/Craftsman
 Daniel Kieninger - Craftsman

214.686.0014
 214.476.8654

CEMETERY:		JAMES POLK JOHNSON	
CITY/COMMUNITY		JOHNSON CITY	
COUNTY	BLANCO	SECTION	
STATE	TEXAS	ROW	
DATE	06/2023	GRAVE	9
LONGITUDE			
LATITUDE			
SURNAME		BROWN	
FIRST NAME 1		BELVA	
FIRST NAME 2			

CONSERVATION PRIORITY

Priority (1-3)	1
1 = Immediate attention	
2 = Needs attention in 2-3 years	
3 = Should be reevaluated in 3-5 years	

REPAIR RECOMMENDATIONS

--

LEVELING + CLEANING RECOMMENDATIONS

Safely lift monument from current position
Remove old foundation and replace with suitable foundation for monument type and size
Level monument base and align with neighboring monuments
Remove all failed setting masonry and compounds and replace the setting material
Safely clean monument with appropriate cleaning solution and technique

PRICING: Pricing is valid until 06/30/2024

Leveling	\$239.60
Repairs	\$0.00
Total + local tax	\$239.60

COMMENTS

<p>Prices listed above are based on a project size totalling \$7,000 or more. All information given and recommendations made herein are believed to be accurate, but not guaranteed.</p> <p>Texas Cemetery Restoration LLC</p>

TEXAS CEMETERY RESTORATION LLC



CEMETERY:		JAMES POLK JOHNSON	
CITY/COMMUNITY		JOHNSON CITY	
COUNTY	BLANCO	SECTION	
STATE	TEXAS	ROW	
DATE	06/2023	GRAVE	1
LONGITUDE			
LATITUDE			

SURNAME	DOCKERY
FIRST NAME 1	ARTHUR E.
FIRST NAME 2	

MONUMENT DESCRIPTION

Monument Type	Gravecover
Monument Style	Historic
Material of Top/Color	Granite/gray
Material of Base	Limestone/White
Footstone Quantity	

CONSERVATION PRIORITY

Priority (1-3)	3
1 = Immediate attention	
2 = Needs attention in 2-3 years	
3 = Should be reevaluated in 3-5 years	

MONUMENT SIZE (Feet)

Monument Width	3
Monument Depth	7
Monument Height	2

REPAIR RECOMMENDATIONS

Fill Cracks with Jahn color matched restorative mortar.

MONUMENT CONDITION

Levelness	Level
Monument Position 1	
Monument Position 2	
Security of Top	Secure
Needs Cleaning	Yes
Soil Severity (1-5)	4
<small>5 = very soiled</small>	
Soiling Type 1	biological growth
Soiling Type 2	soiling

LEVELING + CLEANING RECOMMENDATIONS

Safely clean monument with appropriate cleaning solution and technique
--



Texas Cemetery Restoration LLC
 James "Rusty" Brenner - Owner/Craftsman 214.686.0014
 Daniel Kieninger - Craftsman 214.476.8654

PRICING: Pricing is valid until 06/30/2024

Leveling	\$50.00
Repairs	\$200.00
Total + local tax	\$250.00

COMMENTS

Prices listed above are based on a project size totalling \$7,000 or more. All information given and and recommendations made herein are believed to be accurate, but not guaranteed.
Texas Cemetery Restoration LLC

TEXAS CEMETERY RESTORATION LLC



MONUMENT DESCRIPTION

Monument Type	Pedestal Obelisk
Monument Style	Historic
Material of Top/Color	Concrete/gray
Material of Base	Concrete/gray
Footstone Quantity	

MONUMENT SIZE (Feet)

Monument Width	1.2
Monument Depth	1.2
Monument Height	3.5

MONUMENT CONDITION

Levelness	Unlevel
Monument Position 1	fallen
Monument Position 2	broken
Security of Top	Loose
Needs Cleaning	Yes
Soil Severity (1-5) <small>5 = very soiled</small>	4
Soiling Type 1	biological growth
Soiling Type 2	soiling



Texas Cemetery Restoration LLC
 James "Rusty" Brenner - Owner/Craftsman
 Daniel Kieninger - Craftsman

214.686.0014
 214.476.8654

CEMETERY:		JAMES POLK JOHNSON	
CITY/COMMUNITY		JOHNSON CITY	
COUNTY	BLANCO	SECTION	
STATE	TEXAS	ROW	
DATE	06/2023	GRAVE	5
LONGITUDE			
LATITUDE			

SURNAME	JOHNSON
FIRST NAME 1	INFANT
FIRST NAME 2	

CONSERVATION PRIORITY

Priority (1-3)	1
1 = Immediate attention	
2 = Needs attention in 2-3 years	
3 = Should be reevaluated in 3-5 years	

REPAIR RECOMMENDATIONS

Epoxy broken pieces back together.
 Fill Cracks with Jahn color matched restorative mortar.

LEVELING + CLEANING RECOMMENDATIONS

Safely lift monument from current position
 Remove old foundation and replace with suitable foundation for monument type and size
 Level monument base and align with neighboring monuments
 Remove all failed setting masonry and compounds and replace the setting material
 Safely clean monument with appropriate cleaning solution and technique

PRICING: Pricing is valid until 06/30/2024

Leveling	\$224.00
Repairs	\$350.00
Total + local tax	\$574.00

COMMENTS

Prices listed above are based on a project size totalling \$7,000 or more. All information given and recommendations made herein are believed to be accurate, but not guaranteed.
Texas Cemetery Restoration LLC

TEXAS CEMETERY RESTORATION LLC



CEMETERY:		JAMES POLK JOHNSON	
CITY/COMMUNITY		JOHNSON CITY	
COUNTY	BLANCO	SECTION	
STATE	TEXAS	ROW	
DATE	06/2023	GRAVE	2
LONGITUDE			
LATITUDE			
SURNAME		JOHNSON	
FIRST NAME 1		JAMES P.	
FIRST NAME 2			

MONUMENT DESCRIPTION

Monument Type	Upright w/ Base
Monument Style	Historic
Material of Top/Color	Marble/White
Material of Base	Limestone/White
Footstone Quantity	

CONSERVATION PRIORITY

Priority (1-3)	2
1 = Immediate attention	
2 = Needs attention in 2-3 years	
3 = Should be reevaluated in 3-5 years	

MONUMENT SIZE (Feet)

Monument Width	2
Monument Depth	1
Monument Height	3

REPAIR RECOMMENDATIONS

--

MONUMENT CONDITION

Levelness	Unlevel
Monument Position 1	Tilted
Monument Position 2	
Security of Top	Secure
Needs Cleaning	Yes
Soil Severity (1-5)	5
<small>5 = very soiled</small>	
Soiling Type 1	biological growth
Soiling Type 2	soiling

LEVELING + CLEANING RECOMMENDATIONS

Safely lift monument from current position Remove old foundation and replace with suitable foundation for monument type and size Level monument base and align with neighboring monuments Remove all failed setting masonry and compounds and replace the setting material Safely clean monument with appropriate cleaning solution and technique

PRICING: Pricing is valid until 06/30/2024

Leveling	\$230.00
Repairs	\$0.00
Total + local tax	\$230.00

COMMENTS

Prices listed above are based on a project size totalling \$7,000 or more. All information given and and recommendations made herein are believed to be accurate, but not guaranteed. Texas Cemetery Restoration LLC
--



Texas Cemetery Restoration LLC
 James "Rusty" Brenner - Owner/Craftsman 214.686.0014
 Daniel Kieninger - Craftsman 214.476.8654

TEXAS CEMETERY RESTORATION LLC



CEMETERY:		JAMES POLK JOHNSON	
CITY/COMMUNITY		JOHNSON CITY	
COUNTY	BLANCO	SECTION	
STATE	TEXAS	ROW	
DATE	06/2023	GRAVE	3
LONGITUDE			
LATITUDE			

SURNAME	JOHNSON
FIRST NAME 1	JULIA A.
FIRST NAME 2	

MONUMENT DESCRIPTION

Monument Type	Wedge on Base
Monument Style	Historic
Material of Top/Color	Granite/gray
Material of Base	Granite/gray
Footstone Quantity	

CONSERVATION PRIORITY

Priority (1-3)	1
1 = Immediate attention	
2 = Needs attention in 2-3 years	
3 = Should be reevaluated in 3-5 years	

MONUMENT SIZE (Feet)

Monument Width	2
Monument Depth	1
Monument Height	2

REPAIR RECOMMENDATIONS

--

MONUMENT CONDITION

Levelness	Unlevel
Monument Position 1	Tilted
Monument Position 2	
Security of Top	Loose
Needs Cleaning	Yes
Soil Severity (1-5)	4
<small>5 = very soiled</small>	
Soiling Type 1	biological growth
Soiling Type 2	soiling

LEVELING + CLEANING RECOMMENDATIONS

<p>Safely lift monument from current position</p> <p>Remove old foundation and replace with suitable foundation for monument type and size</p> <p>Level monument base and align with neighboring monuments</p> <p>Remove all failed setting masonry and compounds and replace the setting material</p> <p>Safely clean monument with appropriate cleaning solution and technique</p>
--

PRICING: Pricing is valid until 06/30/2024

Leveling	\$170.00
Repairs	\$0.00
Total + local tax	\$170.00

COMMENTS

<p>Prices listed above are based on a project size totalling \$7,000 or more. All information given and recommendations made herein are believed to be accurate, but not guaranteed.</p> <p>Texas Cemetery Restoration LLC</p>



Texas Cemetery Restoration LLC
 James "Rusty" Brenner - Owner/Craftsman 214.686.0014
 Daniel Kieninger - Craftsman 214.476.8654

TEXAS CEMETERY RESTORATION LLC



CEMETERY:		JAMES POLK JOHNSON	
CITY/COMMUNITY		JOHNSON CITY	
COUNTY	BLANCO	SECTION	
STATE	TEXAS	ROW	
DATE	06/2023	GRAVE	4
LONGITUDE			
LATITUDE			

SURNAME	JOHNSON
FIRST NAME 1	MARK
FIRST NAME 2	

MONUMENT DESCRIPTION

Monument Type	Tablet w/ Base
Monument Style	Historic
Material of Top/Color	Marble/White
Material of Base	Limestone/White
Footstone Quantity	

CONSERVATION PRIORITY

Priority (1-3)	2
1 = Immediate attention	
2 = Needs attention in 2-3 years	
3 = Should be reevaluated in 3-5 years	

MONUMENT SIZE (Feet)

Monument Width	2
Monument Depth	1
Monument Height	2

REPAIR RECOMMENDATIONS

--

MONUMENT CONDITION

Levelness	Unlevel
Monument Position 1	Tilted
Monument Position 2	
Security of Top	Secure
Needs Cleaning	Yes
Soil Severity (1-5)	5
<small>5 = very soiled</small>	
Soiling Type 1	biological growth
Soiling Type 2	soiling

LEVELING + CLEANING RECOMMENDATIONS

Safely lift monument from current position
Remove old foundation and replace with suitable foundation for monument type and size
Level monument base and align with neighboring monuments
Remove all failed setting masonry and compounds and replace the setting material
Safely clean monument with appropriate cleaning solution and technique

PRICING: Pricing is valid until 06/30/2024

Leveling	\$170.00
Repairs	\$0.00
Total + local tax	\$170.00

COMMENTS

Prices listed above are based on a project size totalling \$7,000 or more. All information given and and recommendations made herein are believed to be accurate, but not guaranteed. Texas Cemetery Restoration LLC
--



Texas Cemetery Restoration LLC
 James "Rusty" Brenner - Owner/Craftsman 214.686.0014
 Daniel Kieninger - Craftsman 214.476.8654

TEXAS CEMETERY RESTORATION LLC



CEMETERY:		JAMES POLK JOHNSON	
CITY/COMMUNITY		JOHNSON CITY	
COUNTY	BLANCO	SECTION	
STATE	TEXAS	ROW	
DATE	06/2023	GRAVE	8
LONGITUDE			
LATITUDE			

SURNAME	JOHNSON
FIRST NAME 1	ROY
FIRST NAME 2	

MONUMENT DESCRIPTION

Monument Type	Upright w/ Base
Monument Style	Historic
Material of Top/Color	Marble/White
Material of Base	Limestone/White
Footstone Quantity	

CONSERVATION PRIORITY

Priority (1-3)	1
1 = Immediate attention	
2 = Needs attention in 2-3 years	
3 = Should be reevaluated in 3-5 years	

MONUMENT SIZE (Feet)

Monument Width	1.5
Monument Depth	0.8
Monument Height	1.75

REPAIR RECOMMENDATIONS

--

MONUMENT CONDITION

Levelness	Unlevel
Monument Position 1	Tilted
Monument Position 2	
Security of Top	Loose
Needs Cleaning	Yes
Soil Severity (1-5) <small>5 = very soiled</small>	5
Soiling Type 1	biological growth
Soiling Type 2	soiling

LEVELING + CLEANING RECOMMENDATIONS

Safely lift monument from current position Remove old foundation and replace with suitable foundation for monument type and size Level monument base and align with neighboring monuments Remove all failed setting masonry and compounds and replace the setting material Safely clean monument with appropriate cleaning solution and technique

PRICING: Pricing is valid until 06/30/2024

Leveling	\$170.00
Repairs	\$0.00
Total + local tax	\$170.00

COMMENTS

Prices listed above are based on a project size totalling \$7,000 or more. All information given and recommendations made herein are believed to be accurate, but not guaranteed. Texas Cemetery Restoration LLC
--



Texas Cemetery Restoration LLC
 James "Rusty" Brenner - Owner/Craftsman 214.686.0014
 Daniel Kieninger - Craftsman 214.476.8654

TEXAS CEMETERY RESTORATION LLC



CEMETERY:		JAMES POLK JOHNSON	
CITY/COMMUNITY		JOHNSON CITY	
COUNTY	BLANCO	SECTION	
STATE	TEXAS	ROW	
DATE	06/2023	GRAVE	7
LONGITUDE			
LATITUDE			
SURNAME		JOHNSON	
FIRST NAME 1		ZOUNAH	
FIRST NAME 2			

MONUMENT DESCRIPTION

Monument Type	Tablet w/ Base
Monument Style	Historic
Material of Top/Color	Marble/White
Material of Base	Limestone/White
Footstone Quantity	

CONSERVATION PRIORITY

Priority (1-3)	1
1 = Immediate attention	
2 = Needs attention in 2-3 years	
3 = Should be reevaluated in 3-5 years	

MONUMENT SIZE (Feet)

Monument Width	2
Monument Depth	1
Monument Height	3.25

REPAIR RECOMMENDATIONS

Mortar tablet monument into slotted base.

MONUMENT CONDITION

Levelness	Unlevel
Monument Position 1	Tilted
Monument Position 2	
Security of Top	Loose
Needs Cleaning	Yes
Soil Severity (1-5) <small>5 = very soiled</small>	4
Soiling Type 1	biological growth
Soiling Type 2	soiling

LEVELING + CLEANING RECOMMENDATIONS

Safely lift monument from current position Remove old foundation and replace with suitable foundation for monument type and size Level monument base and align with neighboring monuments Remove all failed setting masonry and compounds and replace the setting material Safely clean monument with appropriate cleaning solution and technique

PRICING: Pricing is valid until 06/30/2024

Leveling	\$245.00
Repairs	\$175.00
Total + local tax	\$420.00

COMMENTS

Prices listed above are based on a project size totalling \$7,000 or more. All information given and and recommendations made herein are believed to be accurate, but not guaranteed. Texas Cemetery Restoration LLC
--



Texas Cemetery Restoration LLC
 James "Rusty" Brenner - Owner/Craftsman 214.686.0014
 Daniel Kieninger - Craftsman 214.476.8654

TEXAS CEMETERY RESTORATION LLC



CEMETERY:		JAMES POLK JOHNSON	
CITY/COMMUNITY		JOHNSON CITY	
COUNTY	BLANCO	SECTION	
STATE	TEXAS	ROW	
DATE	06/2023	GRAVE	6
LONGITUDE			
LATITUDE			

SURNAME		WITHERS	
FIRST NAME 1		BOBER T. LEE	
FIRST NAME 2			

MONUMENT DESCRIPTION

Monument Type	Tablet w/ Base
Monument Style	Historic
Material of Top/Color	Marble/White
Material of Base	Limestone/White
Footstone Quantity	

CONSERVATION PRIORITY

Priority (1-3)	1
1 = Immediate attention	
2 = Needs attention in 2-3 years	
3 = Should be reevaluated in 3-5 years	

MONUMENT SIZE (Feet)

Monument Width	2
Monument Depth	1
Monument Height	3

REPAIR RECOMMENDATIONS

Carefully remove excess mortar.
Mortar tablet monument into slotted base.

MONUMENT CONDITION

Levelness	Unlevel
Monument Position 1	Tilted
Monument Position 2	Sunken
Security of Top	Loose
Needs Cleaning	Yes
Soil Severity (1-5) <small>5 = very soiled</small>	5
Soiling Type 1	biological growth
Soiling Type 2	soiling

LEVELING + CLEANING RECOMMENDATIONS

Safely lift monument from current position
Remove old foundation and replace with suitable foundation for monument type and size
Level monument base and align with neighboring monuments
Remove all failed setting masonry and compounds and replace the setting material
Safely clean monument with appropriate cleaning solution and technique

PRICING: Pricing is valid until 06/30/2024

Leveling	\$230.00
Repairs	\$275.00
Total + local tax	\$505.00

COMMENTS

Prices listed above are based on a project size totalling \$7,000 or more. All information given and recommendations made herein are believed to be accurate, but not guaranteed.
Texas Cemetery Restoration LLC



Texas Cemetery Restoration LLC
James "Rusty" Brenner - Owner/Craftsman 214.686.0014
Daniel Kieninger - Craftsman 214.476.8654