

CITY OF JOHNSON CITY, TEXAS

FIRE HYDRANT AND GATE VALVE IMPROVEMENTS

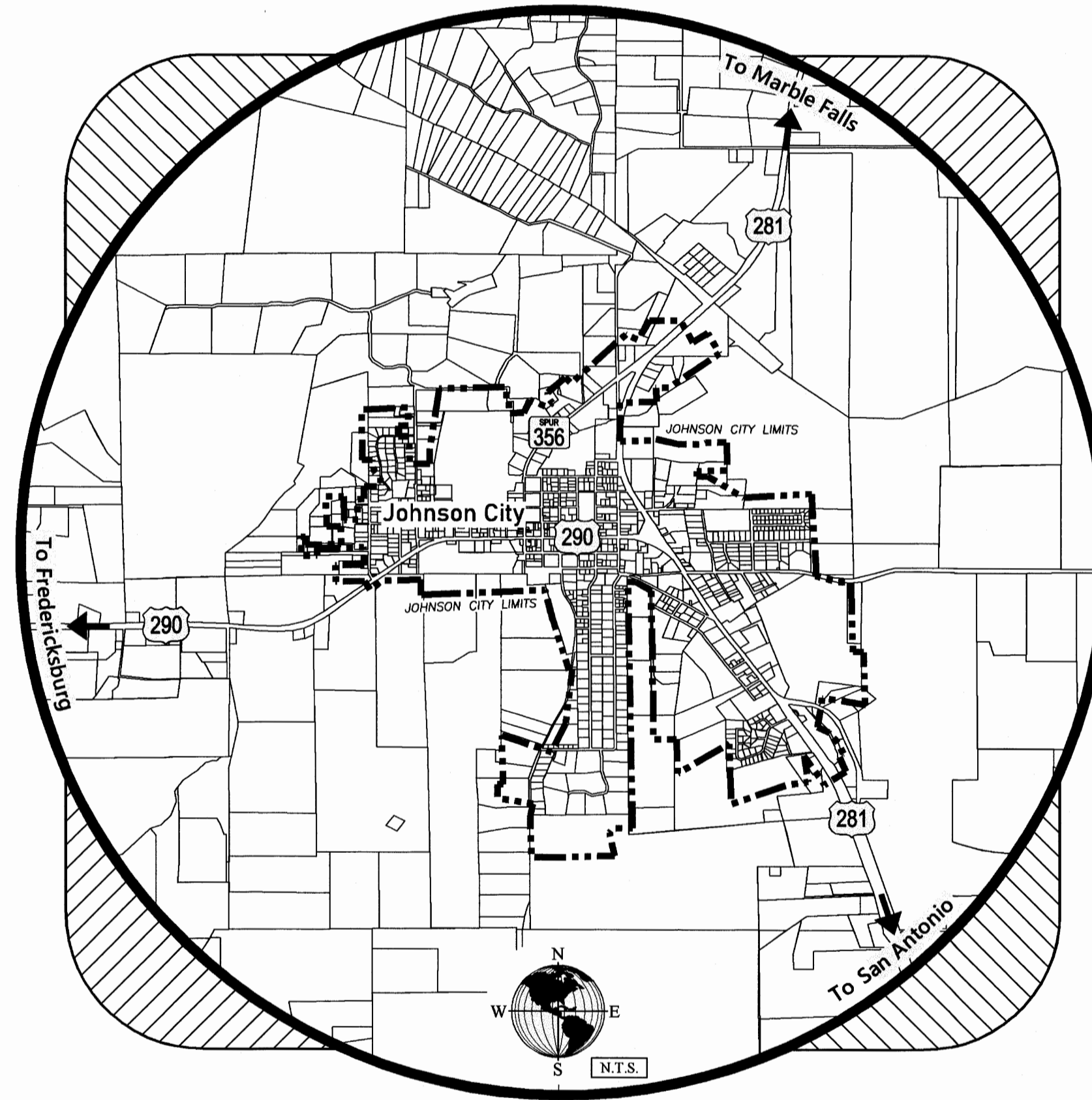
TDA FY 2021/2022

PROJECT #CDV21-0060

CITY OF JOHNSON CITY, TEXAS
 FIRE HYDRANT AND GATE VALVE IMPROVEMENTS
 TDA FY 2021/2022
 PROJECT #CDV21-0060
 PROJECT NO. 665-1789

CITY OFFICIALS

Mayor *STEPHANIE FISHER*
 Mayor Pro Tempore *SHELTON COLEMAN*
 Council Member *KARI THOMAS*
 Council Member *TERESA BABB*
 Council Member *GAYLA JO GUTHRIE*
 Council Member *PAT DILDINE*
 Chief Administrative Officer/City Secretary *RICK SCHRODER*
 Director of Public Works *BRENT J. SULTEMEIER*



SHEET INDEX

<u>SHEET NO.</u>	<u>SHEET TITLE</u>
1	COVER SHEET
2	GENERAL NOTES
3	OVERALL PROJECT LOCATION MAP
4	PROJECT LOCATION DETAILS (Sheet 1 of 3)
5	PROJECT LOCATION DETAILS (Sheet 2 of 3)
6	PROJECT LOCATION DETAILS (Sheet 3 of 3)
7	GENERAL CONSTRUCTION DETAILS

S.D. KALLMAN, L.P.
Engineers and Environmental Consultants
 TBPE Firm Registration No. F-516
 1106 South Mays, Suite 101
 Round Rock, Tx. 78664
 Phone: (512) 218-4404
 Fax: (512) 218-1668
 www.sdkallman.com



STEVEN D. KALLMAN, P.E.

SDK

01-25-2024

DATE

PLAN REVISIONS				
Date	Sheet No.	Revision No.	Description	Made By
03-04-2024	7	⚠	REVISED NOTE ON COMPACTION	SDK

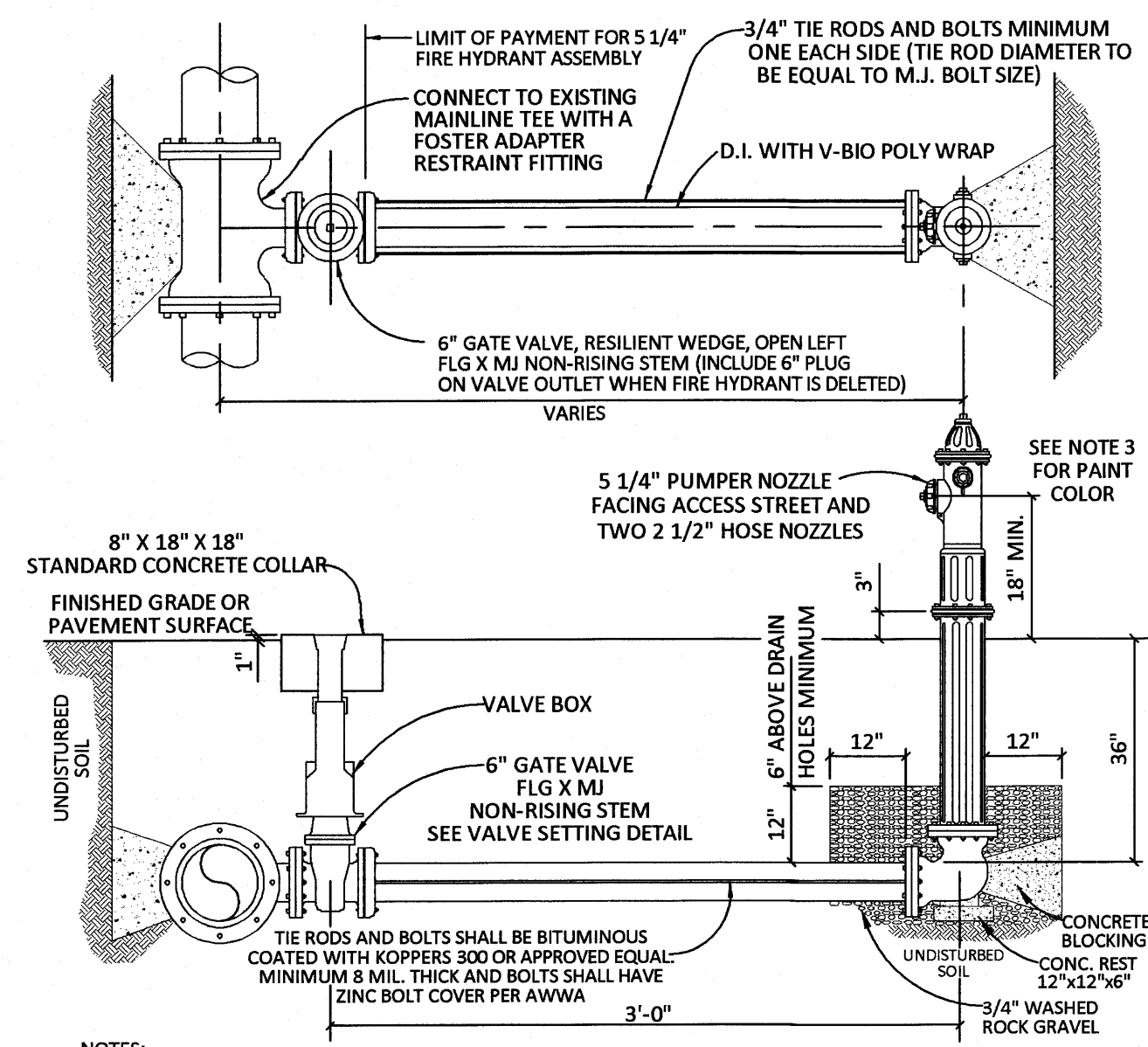
ALL RESPONSIBILITY FOR THE ADEQUACY OF THESE PLANS
 REMAINS WITH THE ENGINEER WHO PREPARED THEM. IN
 ACCEPTING THESE PLANS, THE CITY OF JOHNSON CITY
 MUST RELY UPON THE WORK OF THE DESIGN ENGINEER.

ACCEPTED FOR CONSTRUCTION:

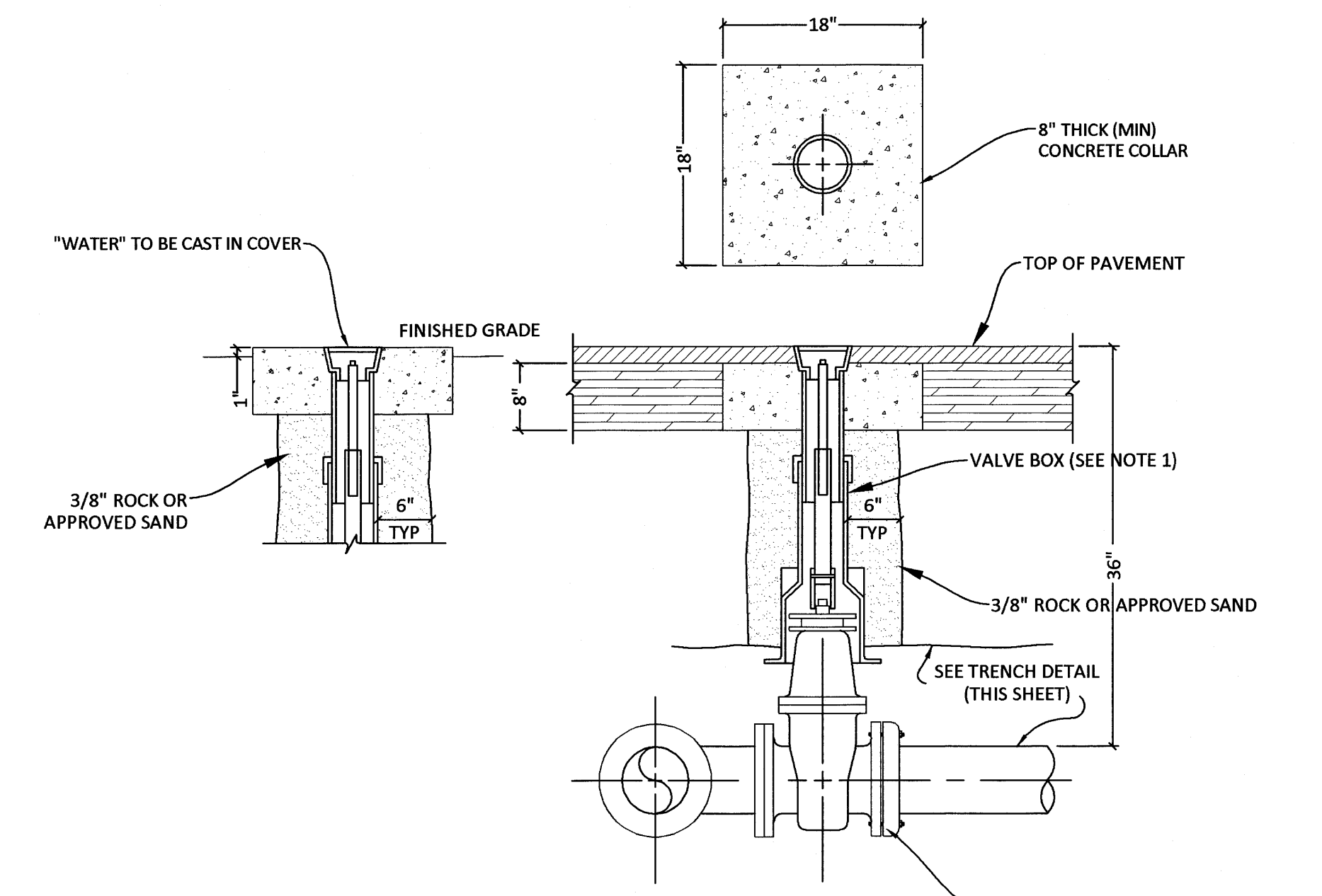
[Signature]

RICK SCHRODER, CHIEF ADMINISTRATIVE OFFICER/CITY SECRETARY
 CITY OF JOHNSON CITY, TEXAS

01-25-2024
 DATE



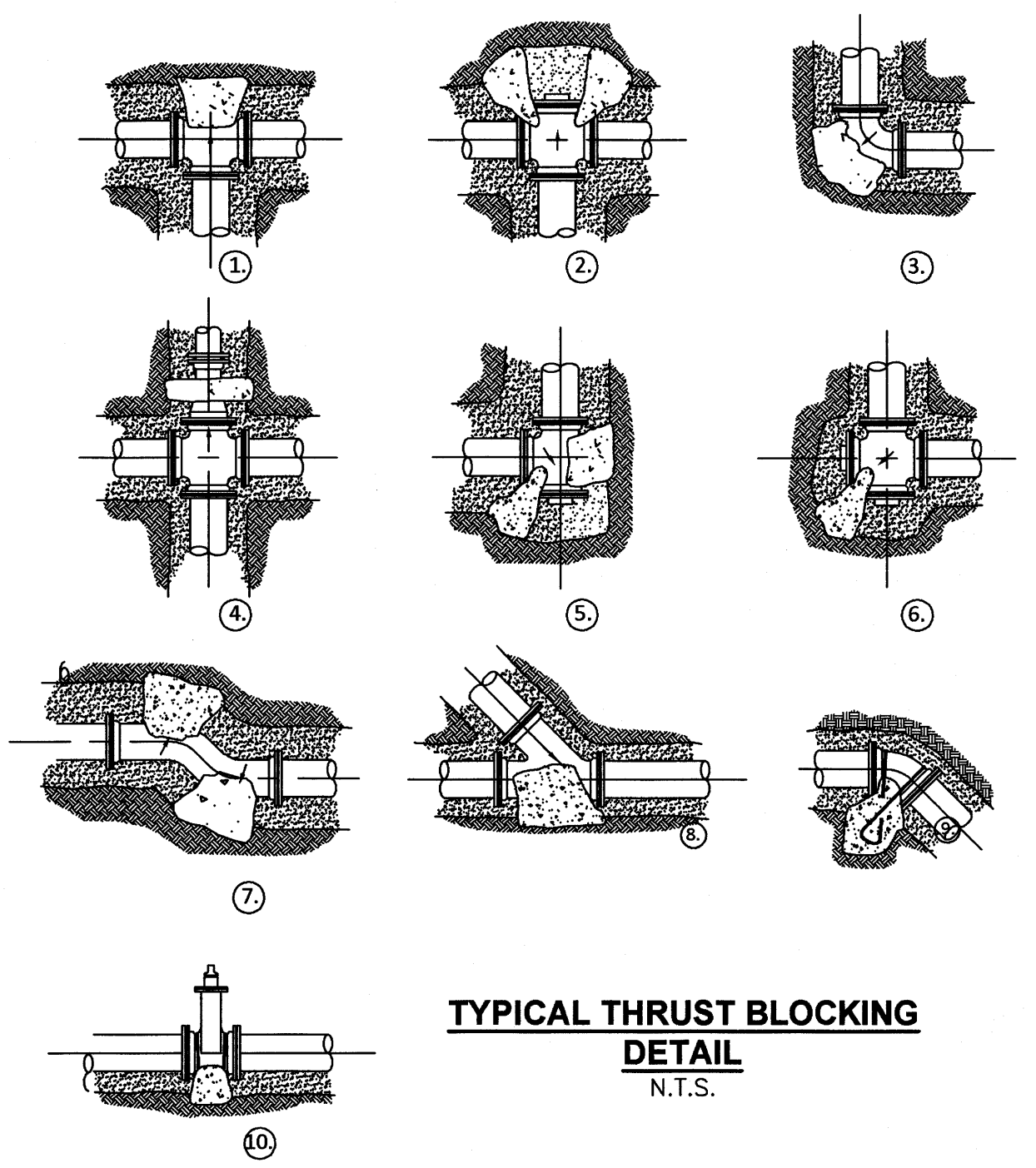
TYPICAL FIRE HYDRANT INSTALLATION DETAIL
N.T.S.



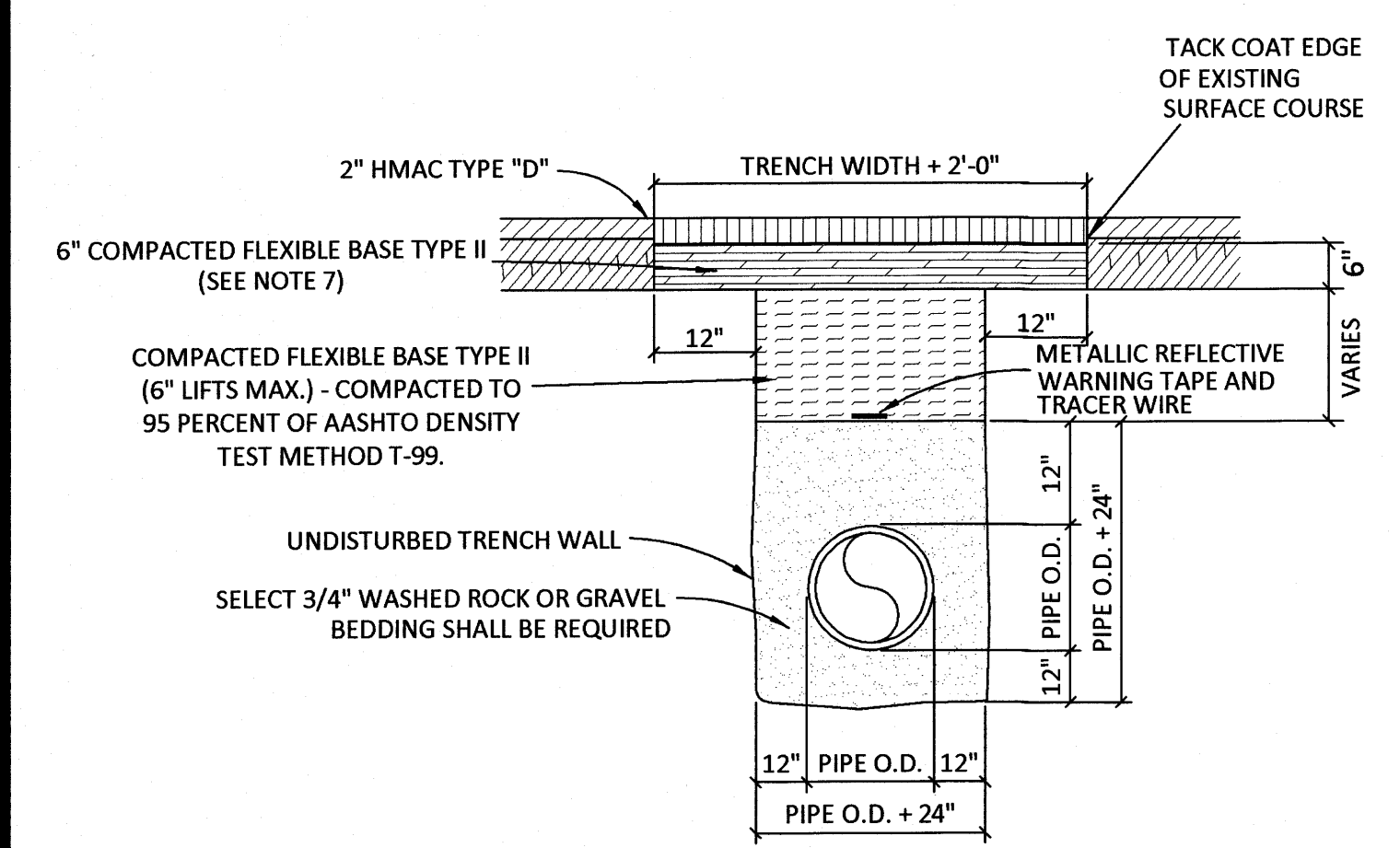
TYPICAL VALVE SETTING DETAIL
N.T.S.

- NOTES:
- 1 Thru Line Connection, Tee
 - 2 Thru Line connection, Cross Used As Tee
 - 3 Directional Change, Elbow
 - 4 Change Line Size, Reducer
 - 5 Direction Change, Tee Used As Elbow
 - 6 Direction Change, Cross Used As Elbow
 - 7 Direction Change
 - 8 Thru Line Connection
 - 9 Direction Change Vertical, Bend Anchor
 - 10 Valve Anchor

PIPE DIA.	FITTINGS	BLOCK DIMENSION HORIZ.	VERT.
2"	All Fittings	1.5	2.0
4"	All Fittings	1.5	2.0
6"	Tee, Cross, Valve	1.5	1.5
6"	90° Bend	1.5	2.0
8"	Tee, Cross, Valve	2.0	2.0
8"	90° Bend	2.0	2.5
10"	45° Bend	2.5	2.5
10"	90° Bend	2.5	2.5
12"	Tee, Valve	3.0	3.0
12"	90° Bend	4.5	2.5
12"	45° Bend	2.5	2.5
16"	Tee	4.5	3.0
18"	Valve		
18"	90° Bend		
18"	45°, 22° Bend		

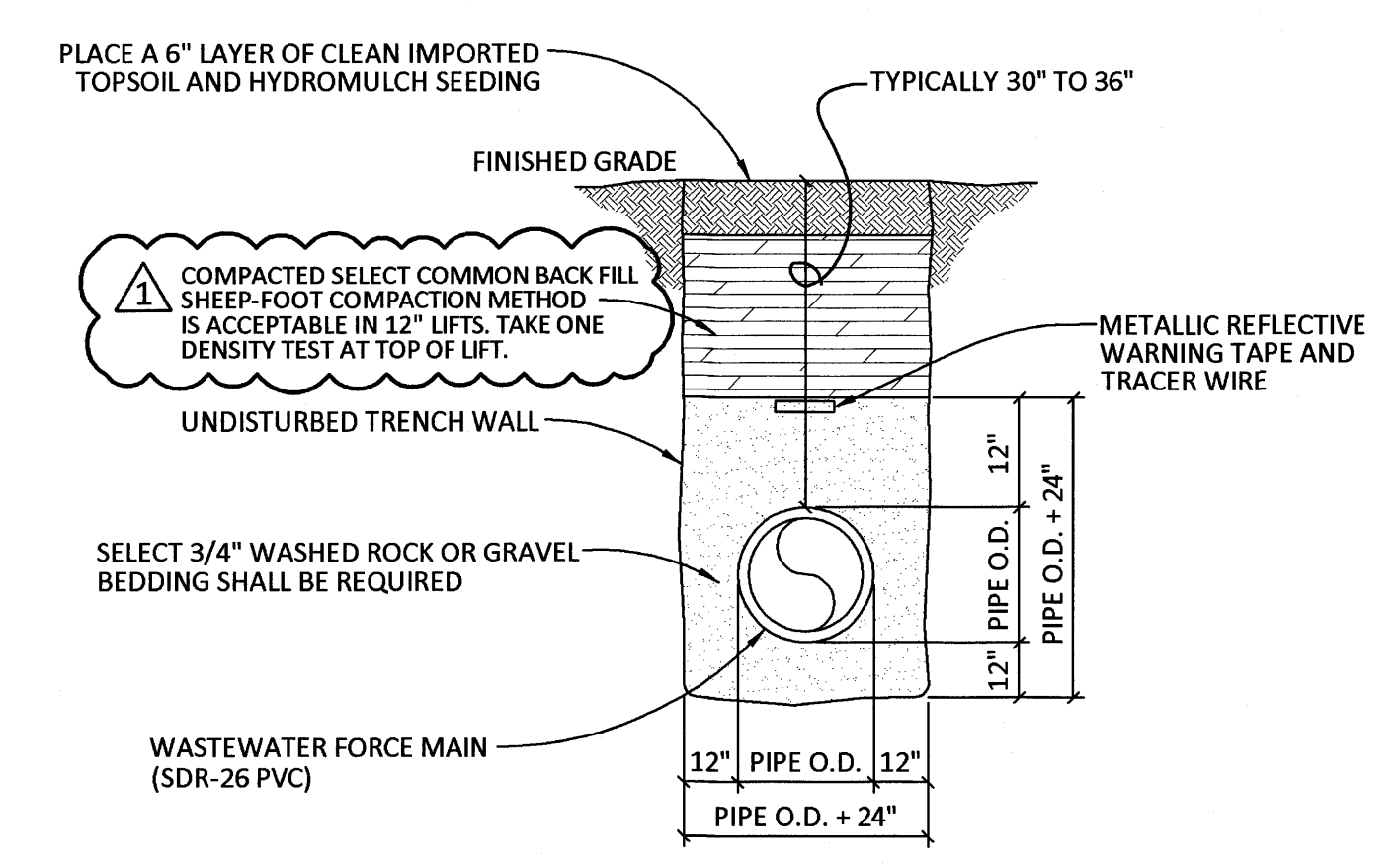


TYPICAL THRUST BLOCKING DETAIL
N.T.S.



OPEN-CUT TRENCH, EMBEDMENT AND PAVEMENT REPLACEMENT DETAIL UNDER EXISTING ROADWAY
N.T.S.

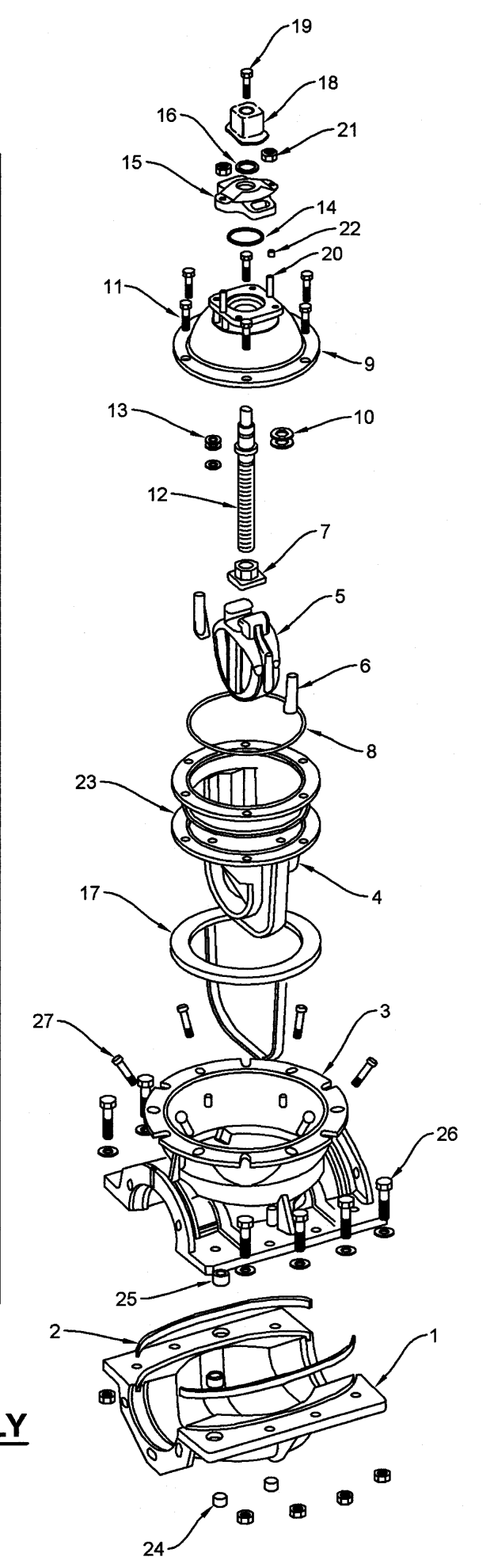
- NOTES:
1. REPLACED ROADWAY BASE MATERIAL OVER DITCH SHALL BE TWICE THE THICKNESS OF THE ORIGINAL BASE AND MINIMUM 6" THICKNESS.
 2. BASE MATERIAL SHALL BE PLACED IN TWO OR THREE LAYERS AND EACH LAYER THOROUGHLY ROLLED OR TAMPED TO SPECIFIED MAXIMUM DENSITY.
 3. ASPHALT CONCRETE PAVEMENT JOINTS SHALL BE MECHANICALLY SAWED.
 4. SURFACE MATERIAL WILL BE CONSISTENT WITH THE EXISTING SURFACE.
 5. A MINIMUM OF ONE DENSITY TEST SHALL BE TAKEN FOR EVERY OPEN CUT CROSSING. PROCTORS FOR MATERIALS USED IN BACKFILLING SHALL BE OBTAINED BY A CERTIFIED LABORATORY. DENSITY TESTS SHALL BE CONDUCTED BY A CERTIFIED LABORATORY OR THE PERMITTEE'S CONSULTANTS. THE PERCENTAGE OF MAXIMUM DENSITY REQUIRED SHALL BE IN ACCORDANCE WITH THE LATEST EDITION OF "THE DEPARTMENT OF TRANSPORTATION STANDARD SPECIFICATIONS FOR ROAD AND BRIDGE CONSTRUCTION" AT THE TIME THE PERMIT WAS ISSUED. ALL DENSITY TESTS SHALL BE COMPLETED AND ACCEPTED ON EACH LAYER PRIOR TO ADDITIONAL BACKFILLING. A COPY OF ALL COMPLETED AND ACCEPTED DENSITY TESTS SHALL BE FURNISHED TO CITY.
 6. THESE SPECIFICATIONS MAY BE SUPERSEDED BY THE GOVERNING AGENCY.
 7. FLEXIBLE BASE TYPE II: (ROADWAY BASE)
TXDOT TYPE A - GRADE 2 OR BETTER CRUSHED LIMESTONE BASE COMPACTED TO 98% OF TXDOT 113E AT OPTIMUM MOISTURE. PROCTOR TO BE PROVIDED BY THE CONTRACTOR TO THE CITY INSPECTOR.
 8. FLEXIBLE BASE TYPE II: (TRENCH BACKFILL)
TXDOT TYPE A - GRADE 2 OR BETTER CRUSHED LIMESTONE BASE COMPACTED TO MINIMUM 95% OF TXDOT 113E AT OPTIMUM MOISTURE. PROCTOR TO BE PROVIDED BY THE CONTRACTOR TO THE CITY INSPECTOR.
 9. CONTRACTOR OR ENGINEER MAY REQUEST FOR USE OF ALTERNATE BACKFILL MATERIAL. ALTERNATE MATERIALS AND TESTING PROTOCOL MUST BE SUBMITTED TO AND APPROVED BY THE CITY ENGINEER PRIOR TO USE.



TRENCH AND EMBEDMENT DETAIL UNDER NON-PAVED AREAS
N.T.S.

LEGEND

ITEM	DESCRIPTION
1	Insert Valve Bottom Casing
2	Valve Side Gasket
3	Insert Valve Top Casing
4	Insert Valve Body
5	Encapsulated Disc - EPDM
6	Guide Cap
7	Disc Nut
8	Bonnet O-Ring - EPDM
9	Bonnet
10	Anti-Friction Washer
11	Hex Cap Screw
12	Everdur Stem
13	Stem O-Ring - EPDM
14	Stuffing Box O-Ring - EPDM
15	Stuffing Box
16	Wiper Ring EPDM
17	Valve Body Gasket
18	Wrench Nut
19	Hex Bolt
20	Hex Bolt
21	Hex Nut
22	Pipe Plug
23	Packing Ring Kit
24	Pipe Plug
25	Dowel Pin/Bushing
26	Sleeve Fastener Kit
27	Angular Bolt Kit



4" - 12" MUELLER INSERTION VALVE ASSEMBLY DETAIL
N.T.S.

PLAN REVISIONS

NO.	DATE	DESCRIPTION	MADE BY
1	03-04-2024	REVISED NOTE ON COMPACTION	SDK

DESIGNED BY: SDK
 DRAWN BY: TIM
 CHECKED BY: SDK
 APPROVED BY: SDK
 SUBMITTAL: _____
 DATE: SEPTEMBER, 2019

S.D. KALLMAN, L.P.
Engineers and Environmental Consultants
 TBPE Firm Registration No. F-516
 1106 South Mays, Suite 101
 Round Rock, TX 78664
 Phone: (512) 218-4404
 Fax: (512) 218-1668
 www.sdkallman.com

FILE: Site Plan PROJECT NO. 724-1650

City of Johnson City, Texas
 FIRE HYDRANT IMPROVEMENTS
 TDA FY 2021/2022 GRANT

GENERAL CONSTRUCTION DETAILS

