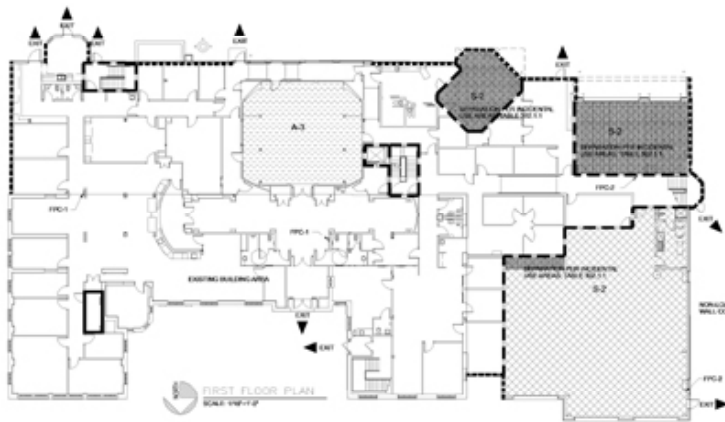
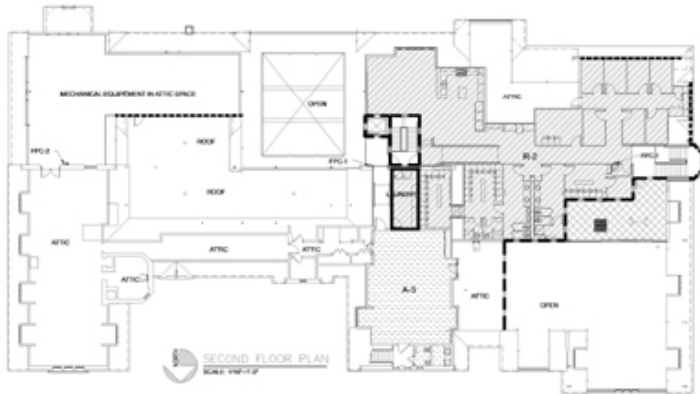


CODE PLANS

CODE INFORMATION



BUILDING OFFICIAL JURISDICTION: CITY OF OAKWOOD  
APPLICABLE BUILDING CODE: OHIO BUILDING CODE, 2002

PROJECT DESCRIPTION: ADDITION TO AND RENOVATION OF THE EXISTING MUNICIPAL BUILDING

30 PARK AVENUE  
OAKWOOD, OH 43040

CHAPTER 3 - USE AND OCCUPANCY

INDUSTRIAL USE AREAS

ROOM OR AREA	SEPARATION
MECHANICAL EQUIPMENT ROOMS	1 HR. GLASS BLOCK FIRE-RATED SYSTEM
MECHANICAL EQUIPMENT ROOMS	3 HR. OR 1 HR. AND AUTOMATIC FIRE-EXT. SYSTEM
LAUNDRY ROOMS OVER 100 SF	1 HR. GLASS BLOCK FIRE-RATED SYSTEM
STORAGE ROOMS OVER 100 SF	1 HR. GLASS BLOCK FIRE-RATED SYSTEM

SECTION 101.1

WHERE TABLE 101.1 PERMITS AN AUTOMATIC FIRE-EXTINGUISHING SYSTEM WITHOUT A FIRE RATED WALL, THE MECHANICAL USE AREA SHALL BE REMODELED TO CONSTRUCTION CAPABLE OF RESISTING THE PASSAGE OF SMOKE.

CLASSIFICATION OF OCCUPANCY SECTIONS 303 TABLE 303

MEANS OF EGRESS	NET SF	BASEMENT	1ST FLR	2ND FLR	NET SF
A. BUSINESS OFFICES, OFFICES AND FIRE STATIONS	15,336	3,796	6,536		25,668
A.3 ASSEMBLY CHAMBER, CONFERENCE TRAINING ROOM	4,850		1,204	1,210	7,264
B.2 STORAGE GARAGES AND STORAGE ROOMS	10,114	4,875	4,875	485	20,349
TOTAL NET SQUARE FOOTAGE	30,300	9,671	12,615	485	53,071

CHAPTER 5 - GENERAL BUILDING HEIGHTS AND AREAS

ANALYZING ACCORDING TO TABLE 503

TABLE 503	% ALLOWABLE STORY AREA (TABLE 503)	100
% INCREASE FOR FRONTAGE (TABLE 503)	40	
% INCREASE FOR AUTOMATIC SPRINKLER (TABLE 503)	200	
TOTAL	340	
CONVERSION FACTOR	0.42	
MAXIMUM AREA TYPE II-A-3 OCCUPANCY (AREA RESTRICTIVE)	6,804 SF	
ALL STORY AREA PORTION (A-3 STORY)	32,496 SF	
BASEMENT FLOOR AREA (ALL STORIES INCLUDING BASEMENT)	9,671 SF	
TOTAL ACTUAL FLOOR AREA (INCLUDING BASEMENT)	32,167 SF	
ACTUAL BUILDING HEIGHT	24 FT. 2 INCHES	37.75 FEET MAX
ALLOWABLE BUILDING HEIGHT	24 FT. 2 INCHES	37.75 FEET MAX

CHAPTER 6 - TYPES OF CONSTRUCTION

ACTUAL BUILDING AREA, FIRST FLOOR, GROSS SF

ADJUSTED BUILDING AREA, 30 PARK AVENUE

CONSTRUCTION CLASSIFICATION: TYPE III-B

FIRE RESISTANCE REQUIREMENTS TABLE 603

CONSTRUCTION TYPE	STORIES
ROOFING WALLS	ROOFING
ROOFING	EXTERIOR
NON-RADIANT WALLS	ROOFING
ROOFING	EXTERIOR
FLOOR CONSTRUCTION	ROOFING
ROOF CONSTRUCTION	ROOFING

CHAPTER 7 - FIRE RESISTANCE RATED CONSTRUCTION

TYPE 4

SMALL ENCLOSED FIRE RESISTANCE

ENCLOSURE OF PLUMBING AND ASSEMBLY

EXCEPT MORE THAN 3 FEET

CHAPTER 8 - INTERIOR FINISHES

TABLE 804

USE IS BUSINESS

ROOFING WALL AND CEILING FINISHES	ROOFING	A-3	B-2	B-2
VERTICAL EXTERIOR AND EXT. FINISHES (PARTIAL)	CLASS B	CLASS B	CLASS C	CLASS C
EXT. ACCESS CORRIDORS	CLASS C	CLASS B	CLASS C	CLASS C
ROOMS AND ENCLOSED SPACES	CLASS D	CLASS C	CLASS C	CLASS C
ROOFING FLOOR FINISHES	ROOFING	CLASS B	CLASS B	CLASS B
VERTICAL EXTERIOR AND EXT. FINISHES (PARTIAL)	CLASS B	CLASS B	CLASS B	CLASS B
EXT. ACCESS CORRIDORS	CLASS B	CLASS B	CLASS B	CLASS B

CHAPTER 9 - FIRE PROTECTION SYSTEMS

SECTION 901

SPRINKLER SYSTEMS INSTALLED THROUGHOUT IN ACCORDANCE WITH NFPA 13

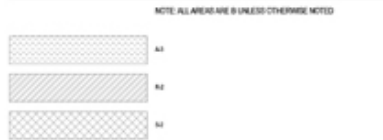
902

FIRE EXTINGUISHING SYSTEMS REQUIRED BY INTERNATIONAL FIRE CODE

FIRE SEPARATION LEGEND



USE GROUP LEGEND



CHAPTER 10 - MEANS OF EGRESS

TABLE 1002.2.2

DEPARTMENT

DEPARTMENT	FLOOR AREA BY PER OCCUPANT
BUSINESS AREAS	100 SQ. FT.
ASSEMBLY CHAMBER, NOT FIRED	70 SQ. FT.
ASSEMBLY CHAMBER & TABLES	70 SQ. FT.
STORAGE AREAS	300 SQ. FT.
STORAGE	300 SQ. FT.
LOCKER AND EXERCISE ROOMS	300 SQ. FT.
STORAGE AND MECHANICAL ROOMS	300 SQ. FT.
STORAGE AND MECHANICAL ROOMS	300 SQ. FT.

BASEMENT

DEPARTMENT	1ST FLR	2ND FLR	TOTAL
BUSINESS AREAS	2,001.00	0	2,001.00
STORAGE AND MECHANICAL ROOMS (INCLUDING B-2 AREAS)	2,339.00	0	2,339.00
LOCKER AND EXERCISE ROOMS	1,102.00	0	1,102.00
TOTAL AREA AND OCCUPANTS	5,442.00	0	5,442.00

FIRST FLOOR

DEPARTMENT	1ST FLR	2ND FLR	TOTAL
BUSINESS AREAS	14,752.00	146	14,898.00
ASSEMBLY CHAMBER, NOT FIRED	1,204.00	0	1,204.00
STORAGE AND MECHANICAL ROOMS	4,875.00	16	4,891.00
STORAGE AND MECHANICAL ROOMS (INCLUDING B-2 AREAS)	2,011.00	0	2,011.00
TOTAL AREA AND OCCUPANTS	32,842.00	162	33,004.00

SECOND FLOOR

DEPARTMENT	1ST FLR	2ND FLR	TOTAL
BUSINESS AREAS	2,001.00	14	2,015.00
LOCKER AND EXERCISE ROOMS	1,102.00	0	1,102.00
STORAGE AND MECHANICAL ROOMS	4,875.00	0	4,875.00
ASSEMBLY CHAMBER & TABLES	1,204.00	0	1,204.00
TOTAL AREA AND OCCUPANTS	9,182.00	14	9,196.00

TABLE 1002.3

EGRESS WIDTH PER OCCUPANT SERVED (INCHES OCCUPANT)

STAIRWAYS	CODES	1ST	2ND	3RD
STAIRWAYS	CODES	20"	20"	20"
GENERAL	CODES	14"	14"	14"

STAIRWAY STAIRWAYS, STAIR LANDING STAIRS

EXIT CAPACITY PER STAIR - 30' x 12' - 20' MAXIMUM

SECOND FLOOR STAIRWAYS, STAIRS & STAIR LANDING

EXIT CAPACITY PER STAIR - 30' x 12' - 20' MAXIMUM

TABLE 1002.4

EXT. ACCESS TRAVEL DISTANCE

MAXIMUM ALLOWABLE TRAVEL WITH SPRINKLER SYSTEM	BASEMENT	A-3	B-2	B-2
MAXIMUM ALLOWABLE TRAVEL WITH SPRINKLER SYSTEM	300 FT.	200 FT.	200 FT.	200 FT.
MAXIMUM ALLOWABLE TRAVEL DISTANCE	100 FT.	100 FT.	100 FT.	100 FT.

TABLE 1002.5

NAME OF EXIT

LOCATION	REQUIRED	EXISTING
BASEMENT	2	2
FIRST FLOOR	2	2
SECOND FLOOR	2	2

CHAPTER 11 - ACCESSIBILITY

TABLE 108.1

DESIGNED IN ACCORDANCE WITH ANIA 101.1

TOTAL SPACES	ACCESSIBLE SPACES REQUIRED	ACCESSIBLE SPACES PROVIDED
30	2	4

GROSS SQUARE FOOTAGE

	BASEMENT	1ST FLR	2ND FLR	TOTAL
EXISTING BUILDING	3,364	7,736	1,670	12,770
NEW CONSTRUCTION	5,286	14,750	4,961	25,000
TOTAL	8,650	22,486	6,631	37,767 SF

Colin + Russell Architects

227 Franklin Ave., Ste. 200  
Columbus, Ohio 43215  
614.221.1111

Architect  
Engineer  
Interior Designer  
Landscape Architect  
Construction Administrator

LORENZ + WILLIAMS

10 West Delaware Street, Suite 200  
Dayton, Ohio 45402  
Tel. 937.233.4400 Fax 937.233.4400  
E-MAIL: info@lwilliams.com

Project Title: City of Oakwood  
Oakwood Municipal Building  
30 PARK AVENUE  
DAYTON, OHIO 45419

Drawing Title: CODE SHEET

Date	Revision No.	Description
09-03-02	01403.00	

Checked: G002