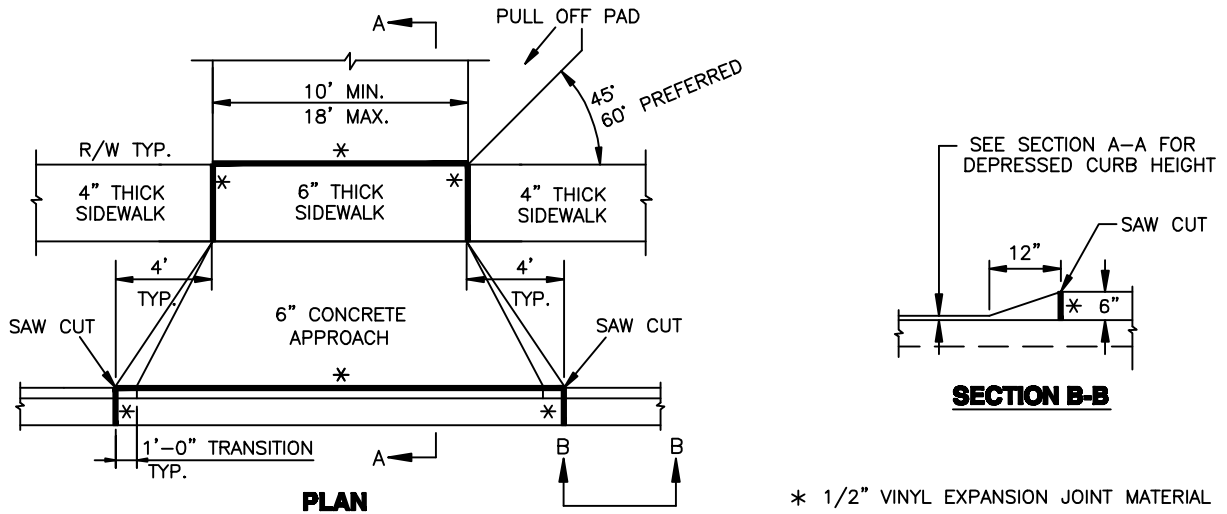
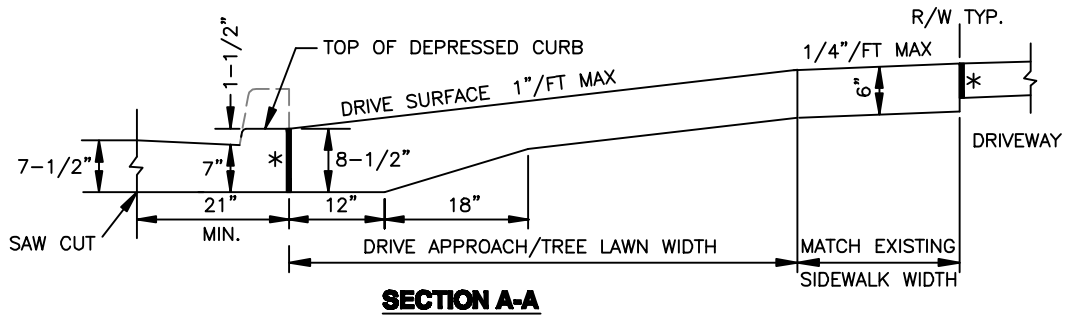


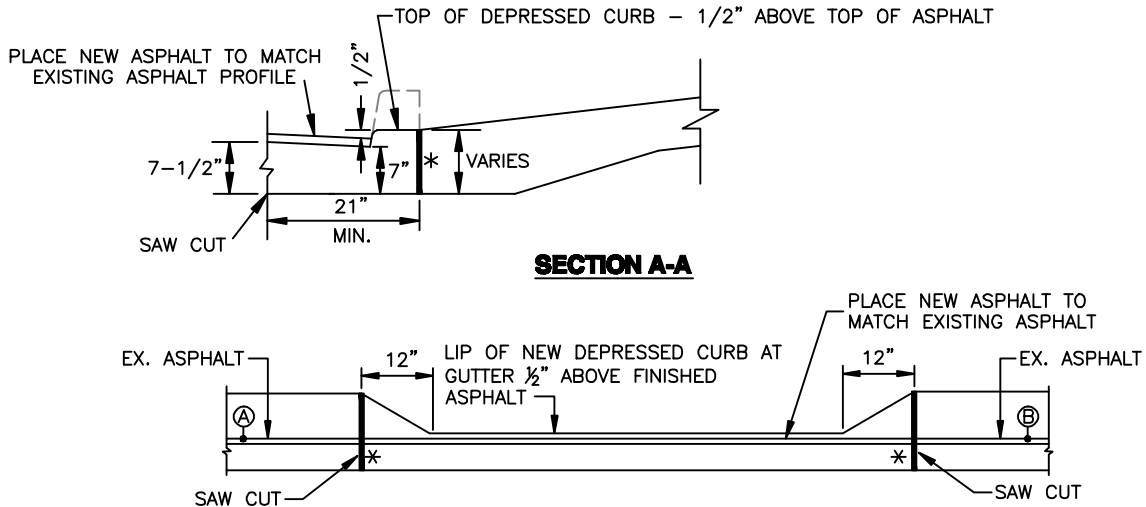
DRIVE APPROACH DETAILS



EXISTING GUTTER PLATE EXPOSED (NOT OVERLAID WITH ASPHALT)



EXISTING GUTTER PLATE OVERLAID WITH ASPHALT

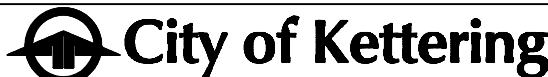


Ⓐ TO Ⓑ STRING LINE FROM Ⓐ TO Ⓑ TO MATCH EXISTING ASPHALT GRADE. USE THE STRING LINE FROM Ⓐ TO Ⓑ TO GET NEW ASPHALT GRADE IN FRONT OF DEPRESSED CURB. NEW DEPRESSED CURB LIP SHALL BE 1/2" HIGHER THAN NEW ASPHALT.

THIS SHEET IS A GUIDE FOR CONTRACTOR'S USE. CITY SPECIFICATIONS OR CITY ENGINEER'S DISCRETION MAY SUPERSEDE THIS SHEET.

STANDARD DRAWING		
DATE	REVISION	BY

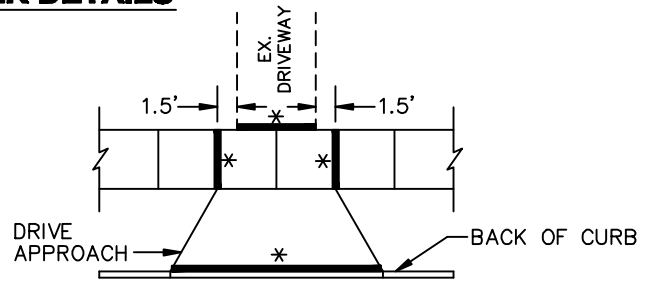
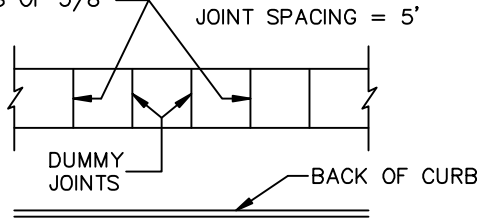
CONTRACTOR GUIDE SHEET FOR SIDEWALK AND DRIVE APPROACH



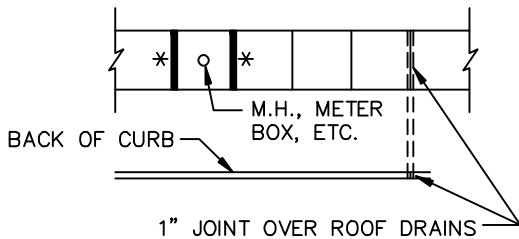
APPROVAL	
<i>Steve E. Ryan</i>	CITY ENGINEER
JANUARY 2010	SHEET 1 of 2 SEE BACK

SIDEWALK DETAILS

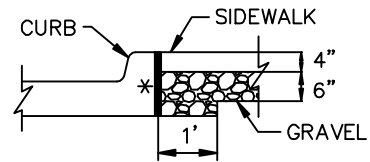
GROOVES 1" DEEP EVERY 15' FINISHED WITH A RADIUS OF 3/8"



* 1/2" VINYL EXPANSION JOINT MATERIAL



BACKFILL DETAIL



(TO BE USED WHERE CURB & SIDEWALK ARE ADJOINING)

SIDEWALK NOTES

1. SIDEWALKS SHALL BE 4 FEET WIDE ON 50' R/W STREETS AND 5' WIDE ON ALL OTHER STREETS, OR WIDTH AS DIRECTED BY THE ENGINEER.
2. SIDEWALKS SHALL BE 4" THICK EXCEPT THRU DRIVEWAYS, WHICH SHALL BE 6" THICK.
3. 1/2" VINYL EXPANSION JOINT MATERIAL SHALL BE PLACED AS SHOWN, WITH A MAXIMUM SPACING OF 100' OR AS DIRECTED BY THE ENGINEER. TYPE SHALL BE PRO-FLEX, OR APPROVED EQUAL.
4. 3" GRAVEL BASE SHALL BE PLACED UNDER SIDEWALKS IF DETERMINED NECESSARY BY THE ENGINEER.
5. CONCRETE SHALL MEET SPECS K-499 (KETTERING MIX) AND SHALL ONLY BE SUPPLIED THROUGH A CITY OF KETTERING APPROVED READY MIX SUPPLIER.
6. SIDEWALKS SHALL BE SLOPED AT 1/4" PER FOOT TOWARD THE STREET, OR AS APPROVED BY THE ENGINEER.

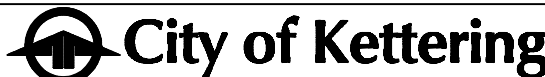
DRIVE APPROACH NOTES

1. MAXIMUM JOINT SPACING SHALL BE 12 FEET LONGITUDINALLY AND TRANSVERSELY.
2. THE FLARE ON RESIDENTIAL DRIVE APPROACHES SHALL BE A MINIMUM OF 4 FEET. ON RESIDENTIAL STREETS WHERE THE TREE LAWN IS LESS THAN 4 FEET, THE FLARE SHALL BE A 45° ANGLE. ON ALL OTHER STREETS (I.E. NON-RESIDENTIAL) WHERE THE TREE LAWN IS 8 FEET OR LESS, THE FLARE SHALL BE A 45° ANGLE. IF THE TREE LAWN IS GREATER THAN 8 FEET, THE FLARE SHALL BE AT THE DISCRETION OF THE ENGINEER.
3. 3" OF GRAVEL SHALL BE PLACED UNDER DRIVE APPROACHES IF DETERMINED NECESSARY BY THE ENGINEER.
4. CONCRETE SHALL MEET SPECS K-499 (KETTERING MIX) AND SHALL ONLY BE SUPPLIED THROUGH A CITY OF KETTERING APPROVED READY MIX SUPPLIER.
5. WHERE ASPHALT CONCRETE PAVEMENT IS DISTURBED, THE ASPHALT SHALL HAVE A SAWED EDGE, BE REPLACED AND SEALED.
6. SAW CUT CURB AT BOTH ENDS. SAW CUTS SHALL HAVE CLEAN AND STRAIGHT EDGES, AND SHALL BE THE FULL DEPTH OF THE CURB.
7. FOR CURB MONOLITHIC WITH CONCRETE STREET, SAW CUT PAVEMENT 21" FROM BACK OF CURB. SAW CUT TO HAVE CLEAN AND STRAIGHT EDGES, AND SHALL BE FULL DEPTH OF CURB AND/OR PAVEMENT.
8. 1/2" VINYL EXPANSION JOINT MATERIAL SHALL BE PLACED AS SHOWN. TYPE SHALL BE PRO-FLEX, OR APPROVED EQUAL.

THIS SHEET IS A GUIDE FOR CONTRACTOR'S USE. CITY SPECIFICATIONS OR CITY ENGINEER'S DISCRETION MAY SUPERSEDE THIS SHEET.

STANDARD DRAWING		
DATE	REVISION	BY

CONTRACTOR GUIDE SHEET FOR SIDEWALK AND DRIVE APPROACH



APPROVAL <i>Steve E. Ryan</i> CITY ENGINEER	SHEET 2 of 2 SEE FRONT
JANUARY 2010	