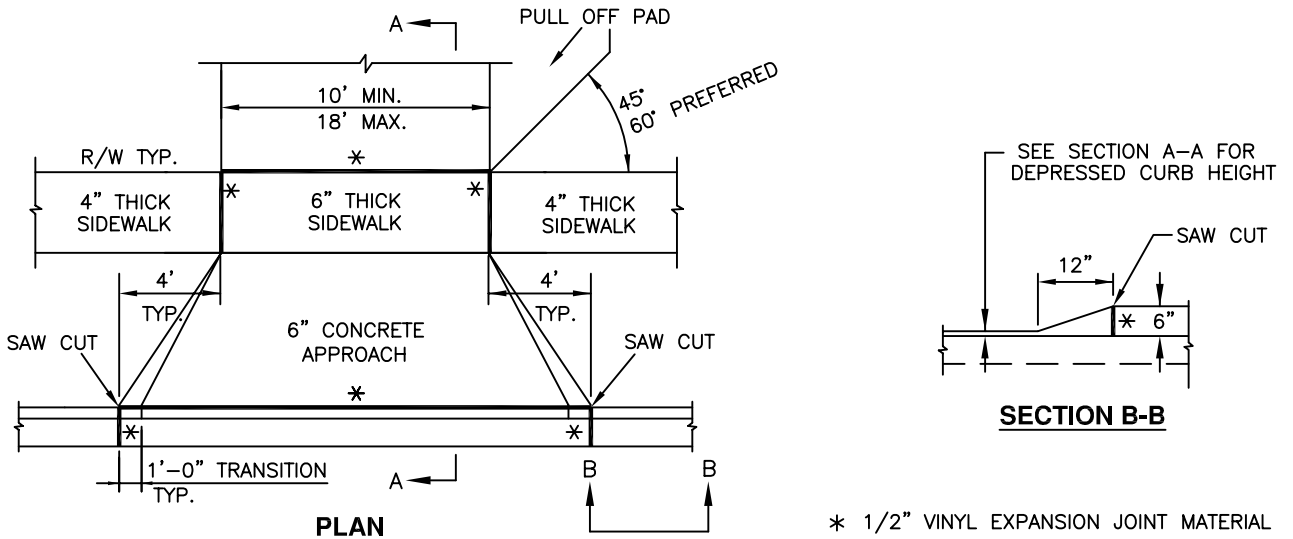
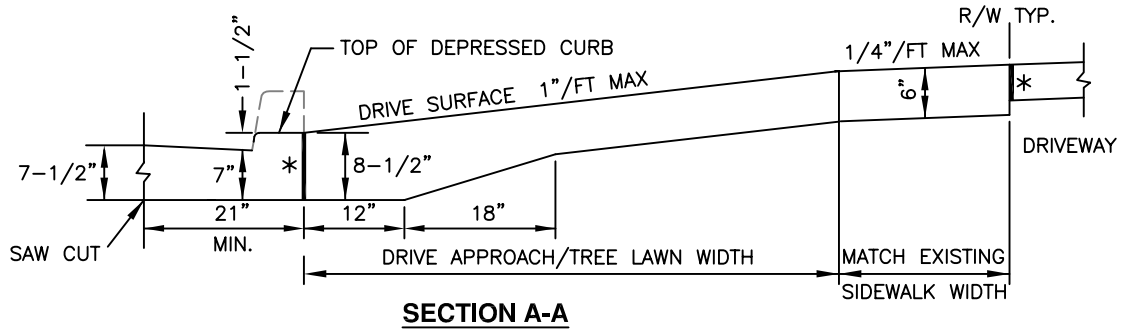


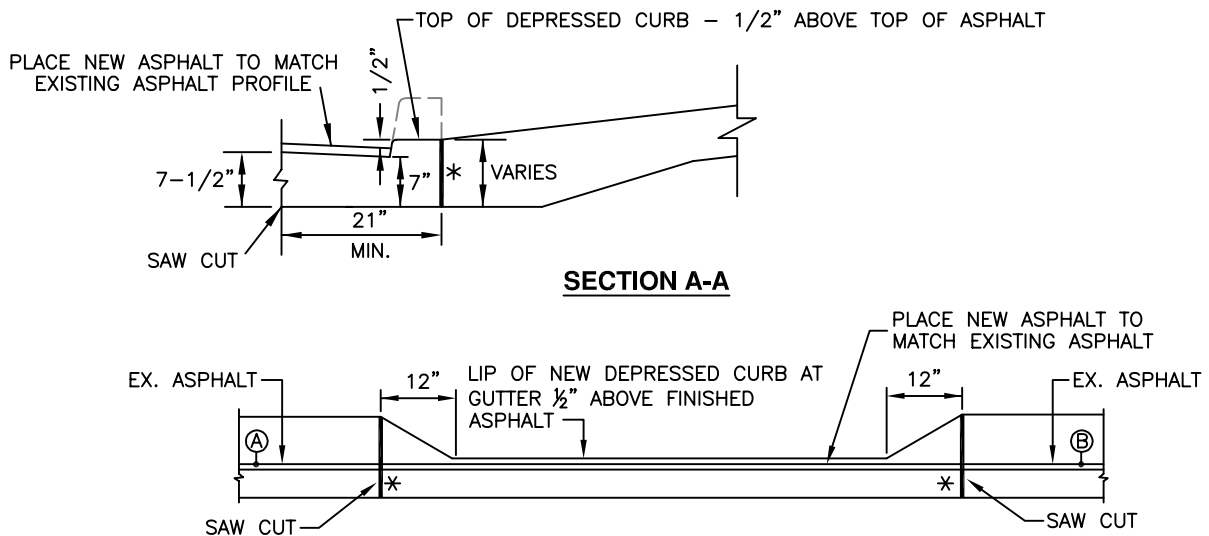
RESIDENTIAL DRIVE APPROACH DETAILS



EXISTING GUTTER PLATE EXPOSED (NOT OVERLAID WITH ASPHALT)



EXISTING GUTTER PLATE OVERLAID WITH ASPHALT



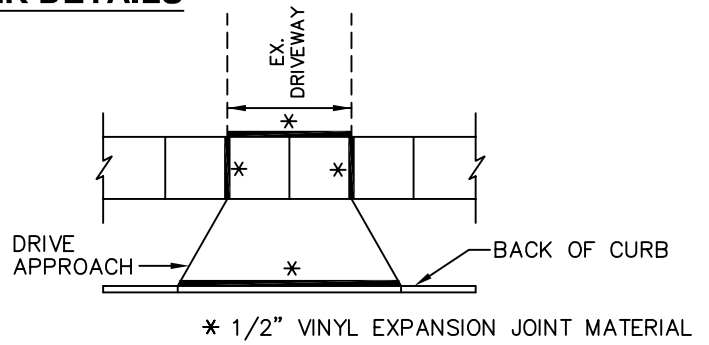
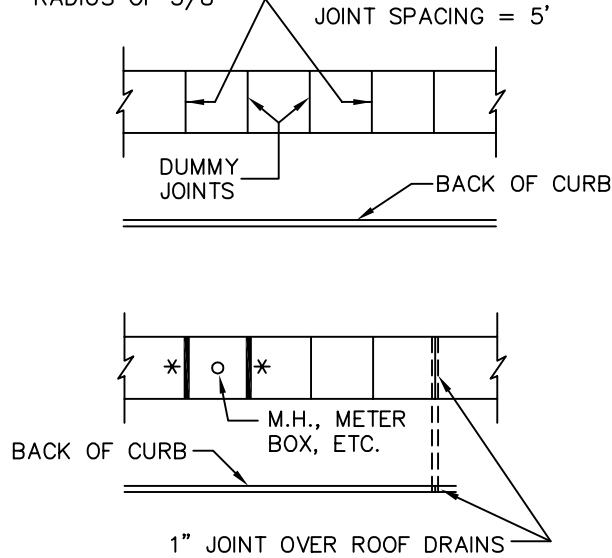
Ⓐ TO Ⓑ STRING LINE FROM Ⓐ TO Ⓑ TO MATCH EXISTING ASPHALT GRADE. USE THE STRING LINE FROM Ⓐ TO Ⓑ TO GET NEW ASPHALT GRADE IN FRONT OF DEPRESSED CURB. NEW DEPRESSED CURB LIP SHALL BE 1/2" HIGHER THAN NEW ASPHALT.

THIS SHEET IS A GUIDE FOR CONTRACTOR'S USE. CITY SPECIFICATIONS OR CITY ENGINEER'S DISCRETION MAY SUPERSEDE THIS SHEET.

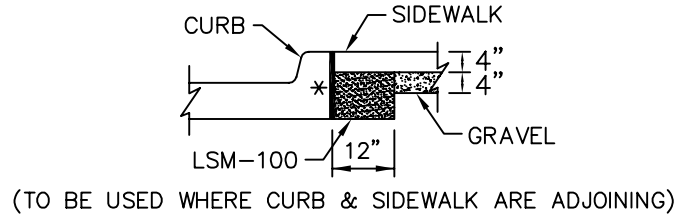
STANDARD DRAWING			CONTRACTOR GUIDE SHEET FOR SIDEWALK AND DRIVE APPROACH	APPROVAL
DATE	REVISION	BY		
			City of Kettering	FEBRUARY 2017
				SHEET 1 of 2 SEE BACK

SIDEWALK DETAILS

GROOVES 1" DEEP EVERY 15' FINISHED WITH A RADIUS OF 3/8"



BACKFILL DETAIL



SIDEWALK NOTES

1. SIDEWALK SHALL BE A MINIMUM OF 5' WIDE OR MATCH EXISTING ON 50' R/W STREETS , OR WIDTH AS DIRECTED BY THE ENGINEER.
2. SIDEWALK SHALL BE 4" THICK EXCEPT THRU DRIVEWAYS, WHICH SHALL BE 6" THICK.
3. VINYL EXPANSION JOINT MATERIAL OR APPROVED EQUAL, SHALL BE PLACED AS SHOWN. A MAXIMUM SPACING OF 50' FOR NEW CONSTRUCTION, BOTH SIDES OF EXISTING CONCRETE FOR REPLACEMENT SECTIONS EQUAL TO OR GREATER THEN 15' OR ONE SIDE OF EXISTING CONCRETE FOR REPLACEMENT SECTION LESS THEN 15'.
4. 3" GRAVEL BASE SHALL BE PLACED UNDER SIDEWALKS IF DETERMINED NECESSARY BY THE ENGINEER.
5. CONCRETE SHALL MEET SPECS K-499 AND SHALL ONLY BE SUPPLIED THROUGH A CITY OF KETTERING APPROVED READY MIX SUPPLIER.
6. SIDEWALKS SHALL BE SLOPED AT 1/4" PER FOOT TOWARD THE STREET, OR AS APPROVED BY THE ENGINEER.
7. ANY TOOL MARKS LEFT BY EDGING SHALL BE ELIMINATED BY TEXTURING THE SURFACE. THE FINAL SURFACE SHALL BE BROOM FINISHED. RETOoled JOINTS SHALL NOT BE CONSTRUCTED UNLESS APPROVED BY THE ENGINEER.

DRIVE APPROACH NOTES

1. MAXIMUM JOINT SPACING SHALL BE 12 FEET LONGITUDINALLY AND TRANSVERSELY.
2. THE FLARE ON RESIDENTIAL DRIVE APPROACHES SHALL BE A MINIMUM OF 4 FEET. ON RESIDENTIAL STREETS WHERE THE TREE LAWN IS LESS THAN 4 FEET, THE FLARE SHALL BE A 45° ANGLE. ON ALL OTHER STREETS (I.E. NON-RESIDENTIAL) WHERE THE TREE LAWN IS LESS THAN 8 FEET, THE FLARE SHALL BE A 45° ANGLE. IF THE TREE LAWN IS GREATER THAN 8 FEET THE FLARE SHALL BE AT THE DISCRETION OF THE ENGINEER.
3. 3" OF GRAVEL SHALL BE PLACED UNDER DRIVE APPROACHES IF DETERMINED NECESSARY BY THE ENGINEER.
4. CONCRETE SHALL MEET SPECS K-499 AND SHALL ONLY BE SUPPLIED THROUGH AN APPROVED READY MIX SUPPLIER.
5. WHERE ASPHALT CONCRETE PAVEMENT IS DISTURBED, THE ASPHALT SHALL HAVE A SAWED EDGE, BE REPLACED AND SEALED AS DIRECTED BY THE ENGINEER.
6. SAW CUT CURB AT BOTH ENDS. SAW CUT SHALL HAVE CLEAN AND STRAIGHT EDGES, AND SHALL BE THE FULL DEPTH OF THE CURB.
7. FOR CURB MONOLITHIC WITH CONCRETE STREET, SAW CUT PAVEMENT 21" FROM BACK OF CURB. SAW CUT TO HAVE CLEAN AND STRAIGHT EDGES, AND SHALL BE FULL DEPTH OF CURB AND/OR PAVEMENT.
8. VINYL EXPANSION JOINT MATERIAL SHALL BE PLACED AS SHOWN ON SHEETS 9-12.
9. ANY TOOL MARKS LEFT BY EDGING SHALL BE ELIMINATED BY TEXTURING THE SURFACE. THE FINAL SURFACE SHALL BE BROOM FINISHED. RETOoled JOINTS SHALL NOT BE CONSTRUCTED UNLESS APPROVED BY THE ENGINEER.
10. IF AN EXISTING SIDEWALK IS PRESENT THROUGH THE DRIVE, THE THE DRIVE APPROACH SHALL BE PLACED IN CONCRETE.

THIS SHEET IS A GUIDE FOR CONTRACTOR'S USE. CITY SPECIFICATIONS OR CITY ENGINEER'S DISCRETION MAY SUPERSEDE THIS SHEET.

STANDARD DRAWING			CONTRACTOR GUIDE SHEET FOR SIDEWALK AND DRIVE APPROACH	APPROVAL
DATE	REVISION	BY		 CITY ENGINEER
			City of Kettering	FEBRUARY 2017
				SHEET 2 of 2 SEE FRONT