



**CITY OF KETTERING**  
PARKS, RECREATION AND CULTURAL ARTS DEPARTMENT

# **Parks & Recreation** *for Every Generation!*



# **2008** **annual report**





The Kettering Parks, Recreation & Cultural Arts Department is extremely proud of the programs, facilities and parks we provide to Kettering residents. Whether it's fishing at Delco Park, working out at the Kettering Recreation Complex or taking a class at Rosewood, we strive to provide affordable, quality programming for all ages. The theme of our 2008 Annual Report is "Parks and Recreation for Every Generation."

This is a guiding principle in the way we develop the services we provide the community.

To ensure we are achieving our goals and providing high-quality services to the community, the City contracted with Leisure Vision, a leading recreation survey organization, to study which facilities and parks are used the most, which ones need improvements and if residents would support a bond issue on the ballot. The most valuable information gathered from the survey was that residents use our facilities/programs and support maintaining and upgrading our parks and facilities.

The support was evident in November 2008 when Kettering residents overwhelmingly approved a \$12.3 million bond issue. The funds along with \$5 million from the City will allow us to make major improvements to the Kettering Recreation Complex and all of our 21 neighborhood parks. Over the next 5 years, changes will include our facilities being made more accessible to people of all abilities, new playground equipment installed at each park, Water Raves Water Park being redesigned and much more.

Another major event last year was the weather conditions and damage not typically experienced in the Midwest from Hurricane Ike. It swept through the Miami Valley leaving department staff with many issues to contend with — power outages at facilities, canceled classes and mountains of storm debris. Staff worked together to develop creative solutions and continued to provide the best level of service to our customers.

Looking ahead to 2009, Kettering residents have a lot to be excited about. We want everyone to be involved in the renovations of our facilities and parks. Public meetings and project renderings will be online throughout the year. You will also have the opportunity to submit your comments online. We look forward to this new chapter in the Kettering Parks, Recreation and Cultural Arts Department.

All the best,

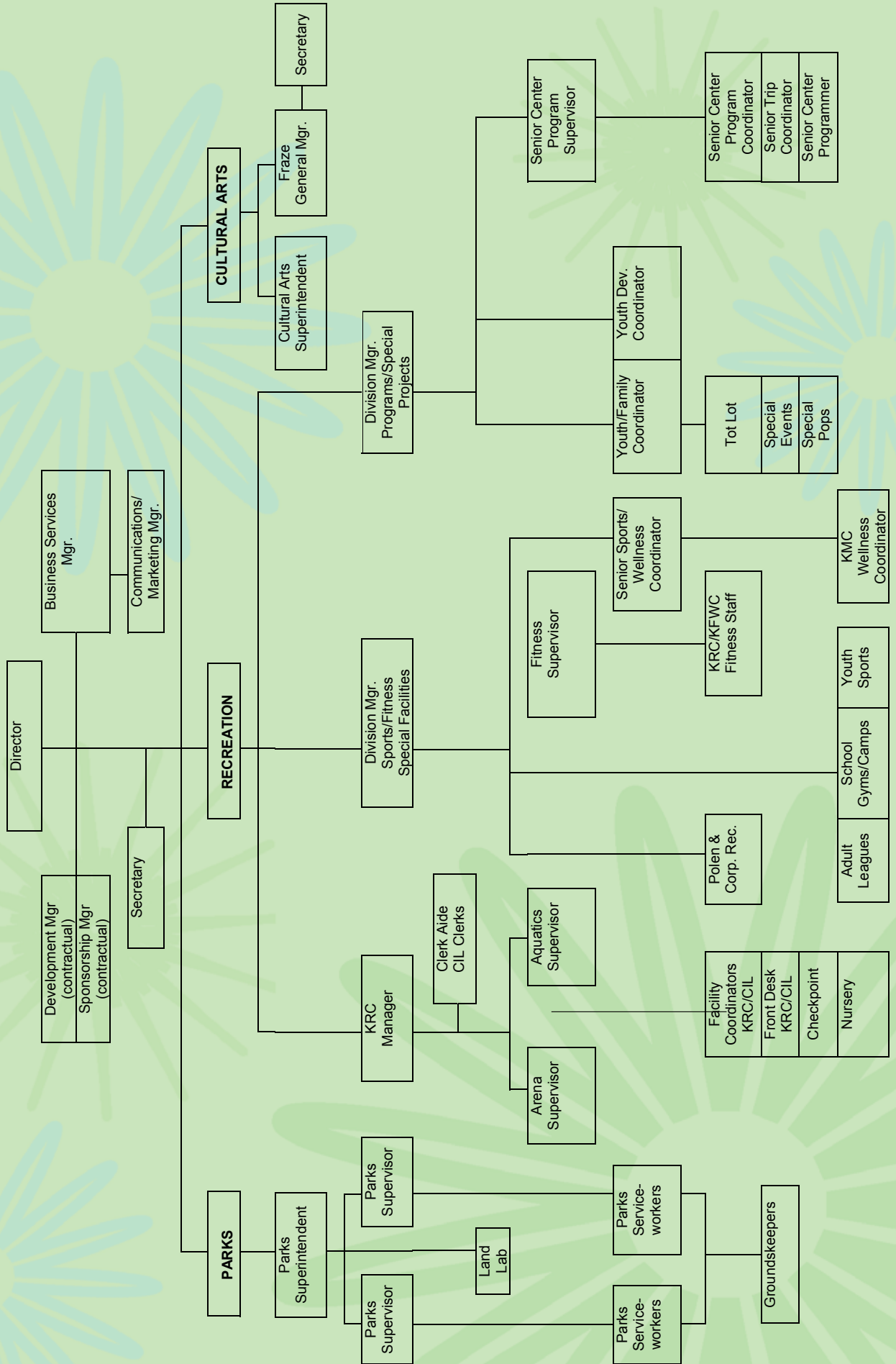
Mary Beth Thaman  
Director



**Integrated and accessible  
leisure services are critical  
to the quality of life of  
people with a disability and  
disadvantaged individuals.**



# Parks, Recreation and Cultural Arts Department 2008 Organizational Chart



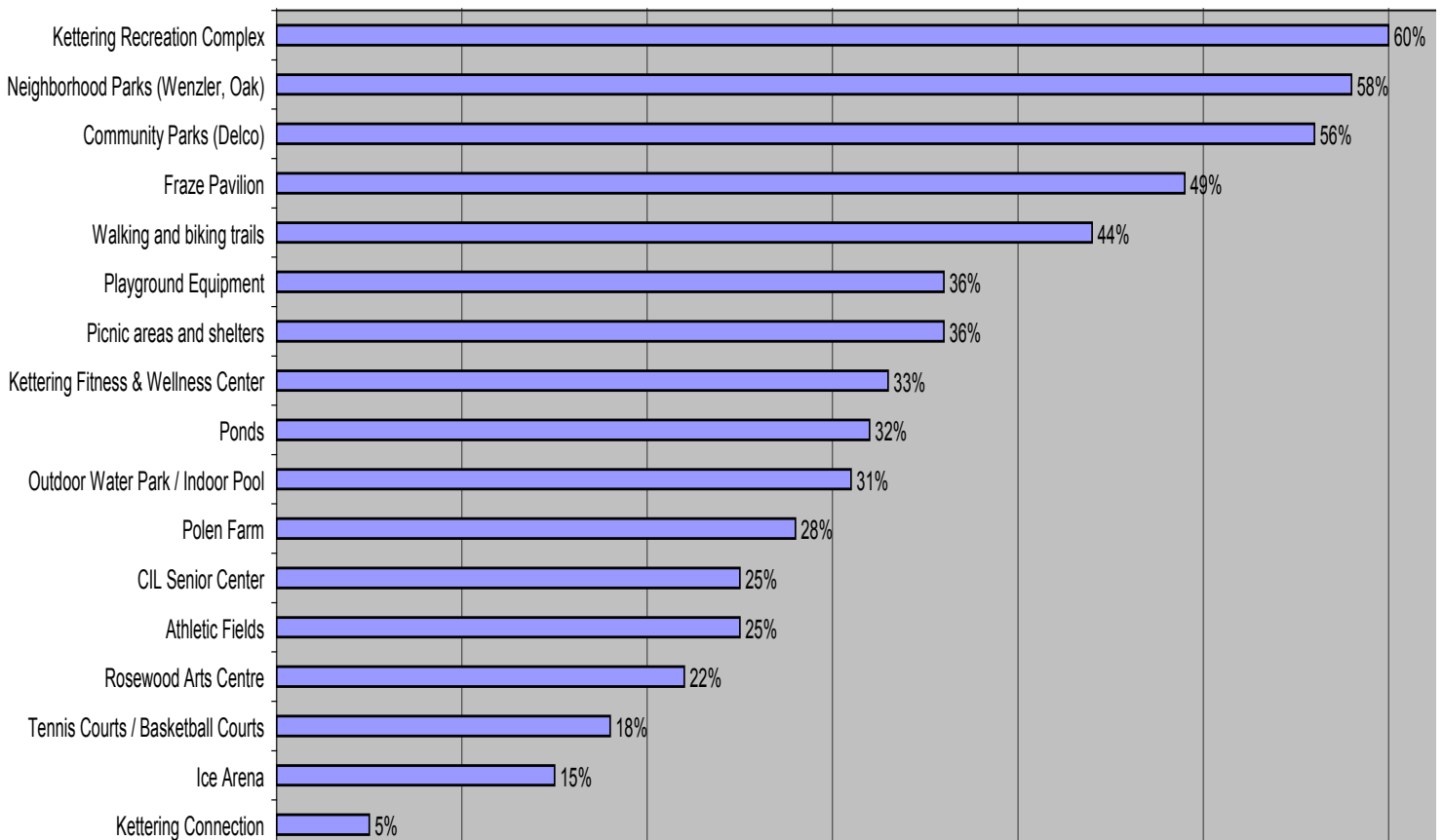
# Department-Wide

Residents were surveyed by an independent consulting firm. The survey found that 93% of responding households used at least one of the major City of Kettering Parks, Recreation and Cultural Arts facilities over the past 12 months. The Kettering Recreation Complex, neighborhood parks, community parks, Frazee Pavilion and walking and biking trails were used by the highest percentage of households in the past 12 months.



*(continued on page 6)*

## Use of Various PRCA Facilities During the Past 12 Months by percentage of respondents (multiple choices could be made)



# Department-Wide

Improving physical health and fitness is, by a wide margin, the most important benefit that parks, recreation and cultural arts services *provide to respondent households*. Fully 35% of respondents rate improving physical health and fitness as the most important benefit received by their households. The next most important benefit is providing healthy and positive alternatives for youth.

Kettering's Parks and Recreation bond issue passed by an overwhelming majority (69%). The department will spend most of 2009 planning and designing the projects.

## Projects include:

- ▶ **KRC** — lobby upgrades, additional fitness room space and multipurpose space

- ▶ **CIL** — lobby upgrades and additional program space
- ▶ **Main Pool & Spa** — upgraded spa area
- ▶ **Water Park** — new pirate-themed children's area, faster slides, additional deep water, improved entrance and increased shade areas
- ▶ **Southdale Nature Center** — new nature-themed playground, improvements to nature center including additional program space
- ▶ **Neighborhood Parks** — new accessible walking paths, new picnic shelters and new seating and landscaping

In partnership with the Kettering Parks Foundation, approximately \$12,363 was distributed to 64 families to



participate in programs and \$5,866 was given in camp scholarships to 33 families.



# Parks Division

Staff met with residents and local groups on the redesign of Pondview Park. Enhancements to the Pondview Park natural area is a cooperative effort between citizens, City staff and the Dayton Foundation. This effort resulted in applying for and receiving an Access to Recreation grant from the W.K. Kellogg Foundation. Staff also worked with a Cincinnati landscape architecture firm to make Pondview Park's paths and educational opportunities a model of accessibility through audio and visual components.

For the 24th consecutive year, Kettering received the distinction of "Tree City" by the Arbor Day Foundation.

The Parks Department Land Lab partnership with the Kettering School Board had its



**TREE CITY USA**

highest attendance yet with 3010 elementary students visiting the program during the 2008 school year.

The Parks Department worked with the Public Works Department in the massive tree and branch clean up resulting from Hurricane Ike. Staff worked more than 3,700 hours in the clean-up effort.



Parks and open spaces bring beauty to an area while giving people satisfaction and improving their quality of life.

# Recreation Division

A second site (at Greenmont Elementary) was added to the existing Camp Funtastic program held at John F. Kennedy Elementary, which doubled enrollment numbers and provided free summer camp to 50 Kettering students.

We coordinated the 2008 Giving Tree Program that gave gifts to 560 children from 11 of the 12 Kettering schools.

In it's first year, the response to the Employee Wellness Program exceeded our expectations! The program has met the initial goal of improving the health of the City of Kettering employees through the three key areas of ASSESSMENT, EDUCATION and ACTIVITY.

A Wellness partnership with Kettering Medical Center, "Partners for Your Health" ([partnersforyourhealth.org](http://partnersforyourhealth.org)),



**Children's play is essential to the human development process.**

combines the resources of two very credible organizations for the purpose of improved community health.

We hosted the Adapted Aquatics conference and had three of our own staff get credentialed in teaching swimming to special needs children.

We hosted the Senior Olympics again in Summer 2008 and had 75 participants. KCST ran the meet.

We hosted our 3rd Annual Family Luau with the Royal Hawaiians in performance. 101 people attended the luau.

National City Bank sponsored two "Splash-N-Jam" events with "Corky's Old-Time Rock & Roll Revival" and "Dustin Burke Band" in performance at the water park. National City Bank provided \$500 in sponsorship for the events.





# Recreation Division



Scooby-Doo appeared at the water park in July. Weekend attendance was up almost 90% and an additional \$3,615 in revenue was received for admission and concessions.

MTV filmed an episode of "MADE" at the Skate Plaza. The show transforms a teenager into something the teen has always dreamed of becoming. The conclusion of the show included the One Love Summer Contest at the Plaza where skaters competed for prizes.

Excellence on Ice Award through the Professional Skaters Association was awarded to the Ice Arena for the past 8 years. We are 1 of 30 facilities across the country that are considered a "Progressive Training Facility" for the excellent service our instruction staff provides.

The Kettering Ice Arena has 4 Professional Coaches on staff that have obtained the highest level of accreditation (Master Level) from the Professional Skaters Association. One of the instructors holds 2 Master Ratings in different disciplines of ice skating.

We hosted the following Hockey Tournaments: Silver Sticks, Mayors Cup, Frozen Creek and the Silver Skate Figure Skating Competition.

We supported the Dayton Hockey Foundation Pond Hockey Event, a special event



that raises donations for underprivileged children in the greater Dayton Area.

Polen Farm experienced the changing of the guard with the hiring of a new Coordinator, Beth Brubaker. Beth comes to Polen with a wealth of facility management experience from the City of Dayton. A new Clerk/secretary was also hired at Polen, Debbie Weaver, who will assist Beth in the day-to-day operations at Polen.

Despite the economy, rental volume at Polen has increased 129% from 2007 to 2008. Our many levels of discounted fees and affordable rates have also created a cold weather interest phenomenon. This increased interest in off-season rentals has caused Polen staff to explore heating alternatives for the upper level of the Polen Barn.



# Cultural Arts Division



Fraze Pavilion was recognized as #51 in Top 100 Worldwide Amphitheaters by Pollstar Magazine based on ticket sales.

Fraze Pavilion and radio station WMMX, Mix 107.7, produced Summerfest X — an all-day music festival celebrating the 10th year of their partnership featuring 10 bands on the Fraze stage in July 2008.

One of the most recognized artists in the world, Beatle Ringo Starr and his All-Starr Band, made a stop at Fraze July 8.

For the 24<sup>th</sup> year, Rosewood has been recognized by the Ohio Arts Council for outstanding arts programming with a general operating grant for over \$20,000.

The Rosewood Gallery held the second “Height x Width x Depth” exhibit featuring artists from Ohio, Michigan, Indiana and Kentucky. This exhibit was attended by 150 people and exceeded expectations for attendance.

The Public Art Committee completed their plan for the next 12 years. The plan includes opportunities for community partnerships, guidelines, structures and installation locations. The plan calls for temporary and interior installations, address issue of privately owned art and to begin the acquisition and installation of a monolithic scale public art in the turnaround space of Kettering Business Park.

The public is often prepared to pay for environmental protection and rehabilitation in their communities, and to support parks and recreation organizations that play a lead role in that protection.



# Awards & Accolades

Amy Anderson received an artist fellowship award for her artwork from the Montgomery County Arts & Cultural District. The award included \$5,000 to support the continuation of her artwork.

Parks Department receptionist Mindy Smith was recognized with a "2008 Special Way" award for her exceptional customer service and job performance.

Aquatic Operations Coordinator Jerry Webb was honored with a "2008 Special Way" award for his exceptional job performance.

Kettering was awarded the "Silver" Healthy Community Award through the Ohio Department of Health for our collaborative efforts in community health improvements with both KMC



Community recreation reduces alienation, loneliness and anti-social behaviors.

(Partners for your Health) and the Kettering City Schools Food Service Program.

Kettering's Senior Transportation Program received the Superior Award from the Ohio Parks and Recreation Association. This program enables many seniors to live independently and utilizes volunteer drivers to help keep costs down.

The lifeguard staff came in 1st and 4th at the regional lifeguard competition AND 3rd at the State competition.

Rated "the cleanest pool in the area" by Channel 7 News in conjunction with the Montgomery County Health Department.

Mary Beth Thaman received the President's Award from the Ohio Parks & Recreation Association for her work on creating the first Physical Activity Plan for the State of Ohio.

Maria Wegh was recognized with the EIP Award. This award celebrates the achievements of an employee in demonstrating Excellence, Innovation and Positive Experiences for our customers.



# 2008 Financial Report

Cost Center	2008 Budget Expenditures	2008 Budget Revenues	Cost Recovery %	2008 Actual Expenditures	2008 Actual Revenues	Cost Recovery %
2400 - Administration	905,223	58,100	6%	901,229	74,581	8%
<b>Administration Total</b>	<b>905,223</b>	<b>58,100</b>	<b>6%</b>	<b>901,229</b>	<b>74,581</b>	<b>8%</b>
2401 - Polen Farm Facility	201,969	138,850	69%	168,328	129,353	77%
2402 - Aquatics Programs/Facility	677,062	622,245	92%	682,898	616,045	90%
2403 - Arena Program/Facility	688,334	784,100	114%	642,141	630,418	98%
2404 - CIL Senior Transportation	108,819	22,500	21%	103,119	22,310	22%
2405 - Nature Center Facility	33,800	12,000	36%	33,145	14,604	44%
2406 - KRC Facility	1,416,446	94,830	7%	1,358,937	86,775	6%
2407 - Concessions	155,891	212,700	136%	133,436	170,069	127%
2408 - Nursery	43,421	13,000	30%	38,170	12,166	32%
2410 - Sports Programs/Facility	303,961	273,483	90%	280,845	199,616	71%
2412 - Fairmont Fitness/Facility	344,200	361,802	105%	344,704	330,790	96%
2413 - Fitness Programs/Facility	357,141	492,808	138%	264,963	374,613	141%
<b>Facilities Total</b>	<b>4,331,044</b>	<b>3,028,318</b>	<b>70%</b>	<b>4,050,685</b>	<b>2,586,759</b>	<b>64%</b>
2411 - Senior Adult Programs	308,544	177,211	57%	259,039	146,865	57%
2414 - Adult Leagues Programs	139,730	155,530	111%	110,767	146,600	132%
2415 - Special Populations Programs	70,009	27,000	39%	55,505	33,812	61%
2416 - Special Events	151,643	37,645	25%	137,189	14,090	10%
2417 - Youth Programs	162,162	127,581	79%	140,547	122,965	87%
2418 - Tot Lot Program	104,221	104,053	100%	85,806	82,317	96%
<b>Programs Total</b>	<b>936,307</b>	<b>629,020</b>	<b>67%</b>	<b>788,854</b>	<b>546,649</b>	<b>69%</b>
<b>TOTAL - RECREATION DIVISION</b>	<b>5,267,351</b>	<b>3,657,338</b>	<b>69%</b>	<b>4,839,540</b>	<b>3,133,408</b>	<b>65%</b>
2450 - Turf Care	180,305	-	0%	141,302	-	0%
2451 - Tree & Plant Maintenance	42,300	1,000	2%	43,645	224	1%
2452 - Athletic Field Maintenance	61,450	1,200	2%	47,006	5,189	11%
2453 - General Park Maintenance	2,380,541	42,350	2%	2,340,244	35,933	2%
2455 - Civic Commons Maintenance	96,395	-	0%	90,261	-	0%
<b>TOTAL - PARKS DIVISION</b>	<b>2,760,992</b>	<b>44,550</b>	<b>2%</b>	<b>2,662,458</b>	<b>41,346</b>	<b>2%</b>
2440 - Rosewood Arts Centre	393,637	58,050	15%	381,337	60,738	16%
2441 - Rosewood Programs	308,500	225,643	73%	281,136	200,375	71%
<b>TOTAL - CULTURAL ARTS DIVISION</b>	<b>702,137</b>	<b>283,693</b>	<b>40%</b>	<b>662,473</b>	<b>261,113</b>	<b>39%</b>
2200 - LPCC Amphitheatre & Frazee Pavilion	2,626,562	1,760,000	67%	3,085,867	2,545,740	82%
2210 - Frazee Concessions	270,450	587,000	217%	321,481	859,256	267%
<b>TOTAL- FRAZEE PAVILION</b>	<b>\$ 2,897,012</b>	<b>\$ 2,347,000</b>	<b>81%</b>	<b>\$ 3,407,348</b>	<b>\$ 3,404,996</b>	<b>100%</b>
<b>TOTAL PRCA</b>	<b>\$ 12,532,715</b>	<b>\$ 6,390,681</b>	<b>51%</b>	<b>\$ 12,473,047</b>	<b>\$ 6,915,444</b>	<b>55%</b>

# 2008 Statistics

## Enrollment Figures

	2007	2008
TotLot.....	102.....	102
Youth.....	2,148.....	1,999
Access to Recreation.....	107.....	176
Fitness/Wellness (KRC).....	1,959.....	2,288
Fitness/Wellness (KFWC).....	1,646.....	2,138
Sports Activities.....	6,953.....	6,789
Ice Skating.....	2,015.....	1,677
Aquatics.....	3,376.....	2,985
Arts.....	2,504.....	2,309



Leisure opportunities for youth provide positive lifestyle choices and alternatives to self-destructive behavior.



Regular physical activity is one of the very best methods of health insurance for individuals.

## Drop-in / Pass Visits

	2007	2008
KRC Fitness Room.....	121,432.....	99,323
KFWC Fitness Room.....	99,130.....	103,457
Aerobics (KRC).....	34,118.....	39,007
Walk/Run Track.....	69,806.....	54,024
Gymnasium.....	21,041.....	21,667
Nursery.....	7,170.....	7,013
Skating.....	26,465.....	25,967
Swimming.....	120,844.....	129,232



# 2008 Statistics

## Fraze Attendance

	2007	2008
Free Concert Attendance .....	20,028	29,543
Festival Attendance .....	59,750	41,000
Ticketed Performance Attendance .....	80,719	77,714

Investing in the environment through parks and the provision of open space in residential areas, leads to an increase in neighborhood property values through accessibility to environmentally friendly green spaces and associated recreation opportunities.



Physical recreation and fitness contributes to a full and meaningful life.



## Rental Attendance

	2007	2008
Gymnasium.....	19,996	16,067
KRC .....	20,696	23,145
Senior Center .....	3,558	5,267
Ice Arena .....	63,778	55,733
Main Pool / Water Park.....	26,976	29,537
Polen Farm .....	17,498	19,544



# City Council & Advisory Board

## CITY COUNCIL

<b>Don Patterson, Mayor</b> Don.Patterson@ketteringoh.org .....	299.5512
<b>Bruce E. Duke, Vice Mayor, District 4</b> Bruce.Duke@ketteringoh.org.....	299.2259
<b>Tony Klepacz, District 3</b> Tony.Klepacz@ketteringoh.org .....	435.9830
<b>Amy Schrimpf, At Large</b> Amy.Schrimpf@ketteringoh.org .....	429.3896
<b>Frank Spolrich, At Large</b> Frank.Spolrich@ketteringoh.org .....	298.2724
<b>Keith Thompson, District 1</b> Keith.Thompson@ketteringoh.org .....	298.4527
<b>Joseph D. Wanamaker, District 2</b> Joe.Wanamaker@ketteringoh.org .....	296.1712
<b>Mark Schwieterman, City Manager</b> Mark.Schwieterman@ketteringoh.org .....	296.2412

## ADVISORY BOARD

Jim Trent, *Chair*  
Sue McCall, *Vice Chair*  
Jerry Barnett, *Member*  
Robert L. Chapman, *Member*  
Bryan Suddith, *Member*  
Chris Morgan, *Ex-officio Member; Kettering Arts Council*  
Helen Watkins, *Ex-officio Member; Kettering Senior Advisory Board*



The City of Kettering, 3600 Shroyer Road, Kettering, OH 45429  
Phone: (937) 296-2454 Fax: (937) 296-3242

**[kettprca@ketteringoh.org](mailto:kettprca@ketteringoh.org)**

*Editors:* Claudine Heizer & Bill Tschirhart;  
*Design, Production and Printing:* Administrative Support