

# 2009

## ANNUAL REPORT



CITY OF KETTERING  
PARKS, RECREATION AND CULTURAL ARTS DEPARTMENT

# TABLE OF CONTENTS

|                             |       |
|-----------------------------|-------|
| WELCOME FROM DIRECTOR ..... | 3     |
| RECREATION .....            | 4-7   |
| PARKS .....                 | 8     |
| CULTURAL ARTS .....         | 9     |
| FINANCIAL REPORT .....      | 10    |
| STATISTICS .....            | 11-14 |
| ORGANIZATIONAL CHART .....  | 15    |



# WELCOME FROM DIRECTOR



Dear Friends,

Wow! 2009 was a productive year for the Kettering Parks, Recreation & Cultural Arts Department. We met with many of our residents concerning the exciting changes coming to our parks and facilities. We have enjoyed the excellent participation and interaction with each of our neighborhoods to renovate our parks for future generations to enjoy.

As I write this letter we have begun construction on several neighborhood parks: Oak, Van Buren, Wenzler and Kennedy Parks. We are also finalizing the plans for the Kettering Recreation Complex and Water Raves Water Park. Construction on the KRC and Water Park is anticipated to begin Fall 2010. All of these projects would not be possible without your support of the 2008 Bond Issue. Thank you for your support and participation with the park projects this year.

Another challenge for 2009 was the economy. We were committed to provide free and low cost programs and events for our residents. There are countless opportunities for you and your family to enjoy our parks – from walking the trails at Pondview Park to fishing at Delco Park or swinging on the playground at Kennedy Park. Our “20 under \$20” list of programs showcases affordable family programs. We’ve created Family Day at the Kettering Recreation Complex that allows families to enjoy all the facility has to offer for one low price. Our Free Fitness Fridays and Free Fridays at Rosewood Arts Centre allow you to try our fitness and arts programming for free! Our goal is to continually develop affordable family programs and events to serve all Kettering residents.

Looking forward into 2010, we will be anticipating many needed face lifts to our parks and facilities. We look forward to providing the residents of Kettering with excellence in service, innovation in our programming and providing positive experiences to all of you.

All the best!

*Mary Beth Thaman*

Mary Beth Thaman  
Director of Parks, Recreation and Cultural Arts Department



## RECREATION

Partners for Healthy Youth hosted the *Community Day of Service* on April 24, 2009. More than 300 youth and adults representing 12 community organizations formed 10 teams that completed property maintenance on 15 Kettering homes or held five car washes that raised \$1,800 for the *Kettering Backpack Program*.

Staff members have been meeting with residents regarding the proposed improvements to the Kettering Recreation Complex, Southdale Nature Center and Water Raves Water Park.

The PRCA Department responded to the needs of Kettering families as a result of tough economic times with a variety of programs and services. We continued to offer the *After-School Enrichment Program* featuring free instructor-led activities in every Kettering elementary school. The School Community Liaison, a full-time social worker who takes referrals for families in crisis from Kettering school counselors, brought an intern on-board to help meet the increased case load. PRCA staff created Camp Sunsational, a full-day summer camp with a lower price point to serve Kettering families with limited resources. Other Summer Camps were moved to school facilities to reduce operational expenses to keep price points affordable for our families. The Kettering Giving Tree





holiday gift donation program provided more than 560 gifts to Kettering children in 2008 and plans to serve more than 600 in 2009.

The *Charles I. Lathrem Senior Center* remains the heart of social, educational and wellness activities for Kettering's older adults. Our volunteers provided tax assistance for more than 1,500 seniors and the fall brought more than 500 seniors in for seasonal flu shots. Membership is growing as is the demand for our Senior Transportation Program. In 2009 nearly 10,000 rides to medical and dental appointments, shopping destinations and other life essential destinations were provided for our seniors by our City staff and volunteers.

The *Kettering Youth Council* enjoyed a year of substantial growth in participation, regional and national exposure. More than 50 young leaders attend KYC meetings each month and work together to implement service projects in the Kettering Community. The National Search Institute Healthy Communities Healthy Youth Conference was held in Cincinnati in November with PRCA staff and KYC leaders playing an important role in planning and execution.

## RECREATION



*Polen Farm* had a successful rental season that saw increase in overall rentals and featured large corporate/partnered events such as Kettering Sister City Picnic, Kettering Civic Band's "Concert in the Park," several local parish picnics, the Chaminade-Julienne Football Kickoff, Kettering Medical Center's "Ice Cream Social" and the Ambucs "Chili Cookoff."

Last year 103 participants met the cash incentive award criteria for the employee wellness program. Employee testimonials for personal health improvement achieved through this program have been overwhelming.

A grant funded "*Woman's Health Week: Whole Body Health — A Celebration of Wellness*" was held May 6, 2009 from 5 – 9 p.m. at the Kettering Recreation Complex. The event's goal was to empower women with information to guide them toward improving their health, living a better life and reducing the risk of chronic disease. The event offered various screenings and lecture topics, as well as provided access to community resources. Event sponsors included Ohio Department of Health, Office of Healthy Ohio, Bureau of Health Promotion and Risk Reduction, Violence and Injury Prevention Program, Wright State University's Center for Healthy Communities AHEA Region IV and the City of Kettering.

*The 2nd Annual Kettering Youth Sports Fest* was held on February 22 and featured all Kettering sports organizations, in addition to Quail Run Racquet Club/Kettering Tennis Center, Rollandia Golf Center, Kettering Sports Medicine Center, Champions Baseball Academy and the City of Kettering Parks,

Recreation & Cultural Arts Department. This event was developed to bring all community sports organizations together under one roof for exposure and to educate the community on all available youth sports opportunities. Approximately 350 adults and children attended the event that featured contests, demonstrations, door prizes, and registration information for available recreational sport opportunities.

Successful *2009 Sports Camp Season* that featured 55 sessions of 23 different sports camps, which accommodated 1,037 energetic youth participants over the course of the summer months of June, July and August.

*A Special Populations Sport Clinic Series* was developed. This series featured three special events that combined a sport-specific clinic with prominent athletes and a demonstration or game. The first event was a basketball clinic held at the Kettering Recreation Complex in conjunction with the University of Dayton Women's Basketball Team and the Wright State Wheelchair Basketball Team. Over 150 families participated in this event. The second event was held in conjunction with the Dayton Dragons. This event, held at Fifth Third Field on August 12, featured a skill clinic with five Dayton Dragon's players where participants received instruction in batting, fielding, pitching and base running. Participants were then invited back to the evening's game against the West Michigan Whitecaps with free game tickets.

*Two new free sports camps* were developed and conducted at Beavertown Elementary, in response to the economic struggles of the community and the need for safe, enriching summer programming.

The *7th Annual Cops & Kids Camp* was held at Indian Riffle Park with 65 participants. This camp also provides a free week of sports camp, coupled with good outreach for the Kettering Police Department and Satellite Courts.

Kettering Parks, Recreation and Cultural Arts Department



## PARKS

made the *Playground for All* more accessible to children of all abilities by adding new play features to the existing play structure and installing the soft surface material around the playground. Grand opening of the park was June 2009.

Staff members have been meeting with residents regarding the proposed improvements to all of the neighborhood and sports parks.

*Pondview Park* construction is underway with new decks, concrete pad learning centers, wetlands, and sensory garden and new trail system using Stay-Loc, which makes the park accessible to people of all abilities. Grand opening of the park is April 30, 2010.

The City of Kettering became a *Tree City Award* recipient for the 27th year.

*The Kettering Arts Council* held a retreat at





Polen Farm in March to plan for the next ten years of cultural arts programming and short-term considerations to meet the needs of the new economy.

*The Rosewood Gallery* was again recognized as a major exhibition space in the Miami Valley with three outstanding competitions and seven individual artists exhibitions from throughout the United States.

*United Art in Education Corporation* continued its support as sponsors in 2009 and through 2010 with cash awards for the competitions.

*The Kettering Children's Theatre*, under the direction of Shannon Fent, presented two outstanding productions with 12 performances of *The Wonderful Wizard of Oz* and *The Jungle Book* in March and November. An estimated 1,000 attended the productions.

*The Ohio Arts Council* approved funding for Rosewood Arts Centre general operations for FY years 2009 through 2011 for \$20,000.

*The 21st Annual Art on the Commons* was held in Lincoln Park in August with 120 exhibitors from throughout the country. Nearly 25,000 individuals from our region and beyond attend this annual event.

*Fraze Pavilion for the Performing Arts* offered more than 35 events with ticket prices under \$20, including five fee festivals and 13 free concerts on Wednesday nights. Fraze entertained sold out crowds with first time Fraze performers Steve Miller Band, Loggins & Messina and .38 Special, along with Fraze favorite the Menus. Fraze cost recovery was 99.68% in 2009.

## CULTURAL ARTS



**CITY OF KETTERING**  
**PARKS, RECREATION AND CULTURAL ARTS DEPARTMENT**  
**2009 FINANCIAL REPORT**

| <b>COST CENTER</b>                        | <b>2009 BUDGET EXPENDITURES</b> | <b>2009 BUDGET REVENUES</b> | <b>COST RECOVERY %</b> | <b>2009 ACTUAL EXPENDITURES</b> | <b>2009 ACTUAL REVENUES</b> | <b>COST RECOVERY %</b> |
|---|---------------------------------|-----------------------------|------------------------|---------------------------------|-----------------------------|------------------------|
| 2400 - ADMINISTRATION                     | 773,310                         | 55,822                      | 7%                     | 787,631                         | 58,020                      | 7%                     |
| <b>ADMINISTRATION TOTAL</b>               | <b>773,310</b>                  | <b>55,822</b>               | <b>7%</b>              | <b>787,631</b>                  | <b>58,020</b>               | <b>7%</b>              |
| 2401 - POLEN FARM FACILITY                | 206,762                         | 142,550                     | 69%                    | 178,551                         | 130,127                     | 73%                    |
| 2402 - AQUATICS PROGRAMS/FACILITY         | 671,164                         | 595,650                     | 89%                    | 704,438                         | 559,719                     | 79%                    |
| 2403 - ARENA PROGRAMS/FACILITY            | 707,863                         | 735,700                     | 104%                   | 678,428                         | 607,848                     | 90%                    |
| 2404 - CIL SENIOR TRANSPORTATION          | 115,827                         | 23,500                      | 20%                    | 102,357                         | 22,784                      | 22%                    |
| 2405 - NATURE CENTER FACILITY             | 41,120                          | 12,000                      | 29%                    | 37,282                          | 12,154                      | 33%                    |
| 2406 - KRC FACILITY                       | 1,470,085                       | 87,600                      | 6%                     | 1,434,234                       | 91,559                      | 6%                     |
| 2407 - CONCESSIONS                        | 147,379                         | 198,100                     | 134%                   | 114,439                         | 139,453                     | 122%                   |
| 2408 - NURSERY                            | 43,755                          | 14,500                      | 33%                    | 39,898                          | 9,028                       | 23%                    |
| 2410 - SPORTS PROGRAMS/FACILITY           | 268,883                         | 281,002                     | 105%                   | 280,097                         | 213,478                     | 76%                    |
| 2412 - FAIRMONT FITNESS/FACILITY          | 307,541                         | 403,600                     | 131%                   | 307,115                         | 288,580                     | 94%                    |
| 2413 - FITNESS PROGRAMS/FACILITY          | 299,053                         | 518,250                     | 173%                   | 274,336                         | 380,901                     | 139%                   |
| <b>FACILITIES TOTAL</b>                   | <b>4,279,433</b>                | <b>3,012,452</b>            | <b>70%</b>             | <b>4,151,174</b>                | <b>2,455,629</b>            | <b>59%</b>             |
| 2411 - SENIOR ADULT PROGRAMS              | 279,368                         | 181,250                     | 65%                    | 272,933                         | 144,192                     | 53%                    |
| 2414 - ADULT LEAGUES PROGRAMS             | 127,768                         | 153,285                     | 120%                   | 117,874                         | 140,331                     | 119%                   |
| 2415 - SPECIAL POPULATIONS PROGRAMS       | 79,952                          | 37,250                      | 47%                    | 46,989                          | 29,610                      | 63%                    |
| 2416 - SPECIAL EVENTS                     | 172,045                         | 13,750                      | 8%                     | 135,159                         | 17,557                      | 13%                    |
| 2417 - YOUTH PROGRAMS                     | 137,353                         | 129,175                     | 94%                    | 120,461                         | 108,482                     | 90%                    |
| 2418 - TOTLOT PROGRAM                     | 85,025                          | 89,000                      | 105%                   | 83,867                          | 88,153                      | 105%                   |
| <b>PROGRAMS TOTAL</b>                     | <b>881,511</b>                  | <b>603,710</b>              | <b>68%</b>             | <b>777,283</b>                  | <b>528,325</b>              | <b>68%</b>             |
| <b>TOTAL - RECREATION DIVISION</b>        | <b>5,160,944</b>                | <b>3,616,162</b>            | <b>70%</b>             | <b>4,928,457</b>                | <b>2,983,954</b>            | <b>61%</b>             |
| 2453 - GENERAL PARK MAINTENANCE           | 2,670,068                       | 44,550                      | 2%                     | 2,592,974                       | 38,886                      | 1%                     |
| <b>TOTAL - PARKS DIVISION</b>             | <b>2,670,068</b>                | <b>44,550</b>               | <b>2%</b>              | <b>2,592,974</b>                | <b>38,886</b>               | <b>1%</b>              |
| 2440 - ROSEWOOD ARTS CENTRE               | 373,946                         | 54,400                      | 15%                    | 342,452                         | 57,952                      | 17%                    |
| 2441 - ROSEWOOD PROGRAMS                  | 307,325                         | 233,680                     | 76%                    | 280,815                         | 201,933                     | 72%                    |
| <b>TOTAL - CULTURAL ARTS DIVISION</b>     | <b>681,271</b>                  | <b>288,080</b>              | <b>42%</b>             | <b>623,267</b>                  | <b>259,885</b>              | <b>42%</b>             |
| 2200 - LPCC AMPHITHEATRE & FRAZE PAVILION | 3,027,269                       | 2,115,000                   | 70%                    | 2,823,162                       | 2,288,467                   | 81%                    |
| 2210 - FRAZE CONCESSIONS                  | 349,382                         | 675,000                     | 193%                   | 294,996                         | 810,469                     | 275%                   |
| <b>TOTAL - FRAZE PAVILION</b>             | <b>\$3,376,651</b>              | <b>\$2,790,000</b>          | <b>83%</b>             | <b>\$3,118,158</b>              | <b>\$3,098,936</b>          | <b>99%</b>             |
| <b>TOTAL PRCA</b>                         | <b>\$12,662,243</b>             | <b>\$6,794,614</b>          | <b>54%</b>             | <b>\$12,050,487</b>             | <b>\$6,439,680</b>          | <b>53%</b>             |



## ENROLLMENT FIGURES

|                              | 2008  | 2009  |
|------------------------------|-------|-------|
| TOTLOT .....                 | 102   | 99    |
| YOUTH .....                  | 1,999 | 1,702 |
| ACCESS TO RECREATION .....   | 176   | 176   |
| FITNESS/WELLNESS (KRC) ..... | 2,288 | 1,938 |
| FITNESS/WELLNESS (KFWC) ..   | 2,138 | 1,546 |
| SPORTS ACTIVITIES.....       | 6,789 | 6,538 |
| ICE SKATING.....             | 1,677 | 1,507 |
| AQUATICS.....                | 2,985 | 2,888 |
| ARTS.....                    | 2,309 | 2,223 |

# 2009 STATISTICS



## DROP-IN / PASS VISITS

|                         | 2008    | 2009    |
|-------------------------|---------|---------|
| KRC FITNESS ROOM .....  | 99,323  | 96,157  |
| KFWC FITNESS ROOM ..... | 103,457 | 101,932 |
| AEROBICS (KRC).....     | 39,007  | 43,662  |
| AEROBICS (KFWC).....    |         | 1,112   |
| WALK/RUN TRACK.....     | 54,024  | 59,299  |
| GYMNASIUM .....         | 3,722   | 3,594   |
| NURSERY .....           | 7,013   | 5,696   |
| SKATING .....           | 25,967  | 23,944  |
| SWIMMING .....          | 129,232 | 102,598 |



**FRAZE ATTENDANCE**

|                                    | 2008   | 2009   |
|------------------------------------|--------|--------|
| FREE CONCERT ATTENDANCE.....       | 29,543 | 18,423 |
| FESTIVAL ATTENDANCE.....           | 41,000 | 39,685 |
| TICKETED PERFORMANCE ATTENDANCE .. | 77,714 | 87,601 |



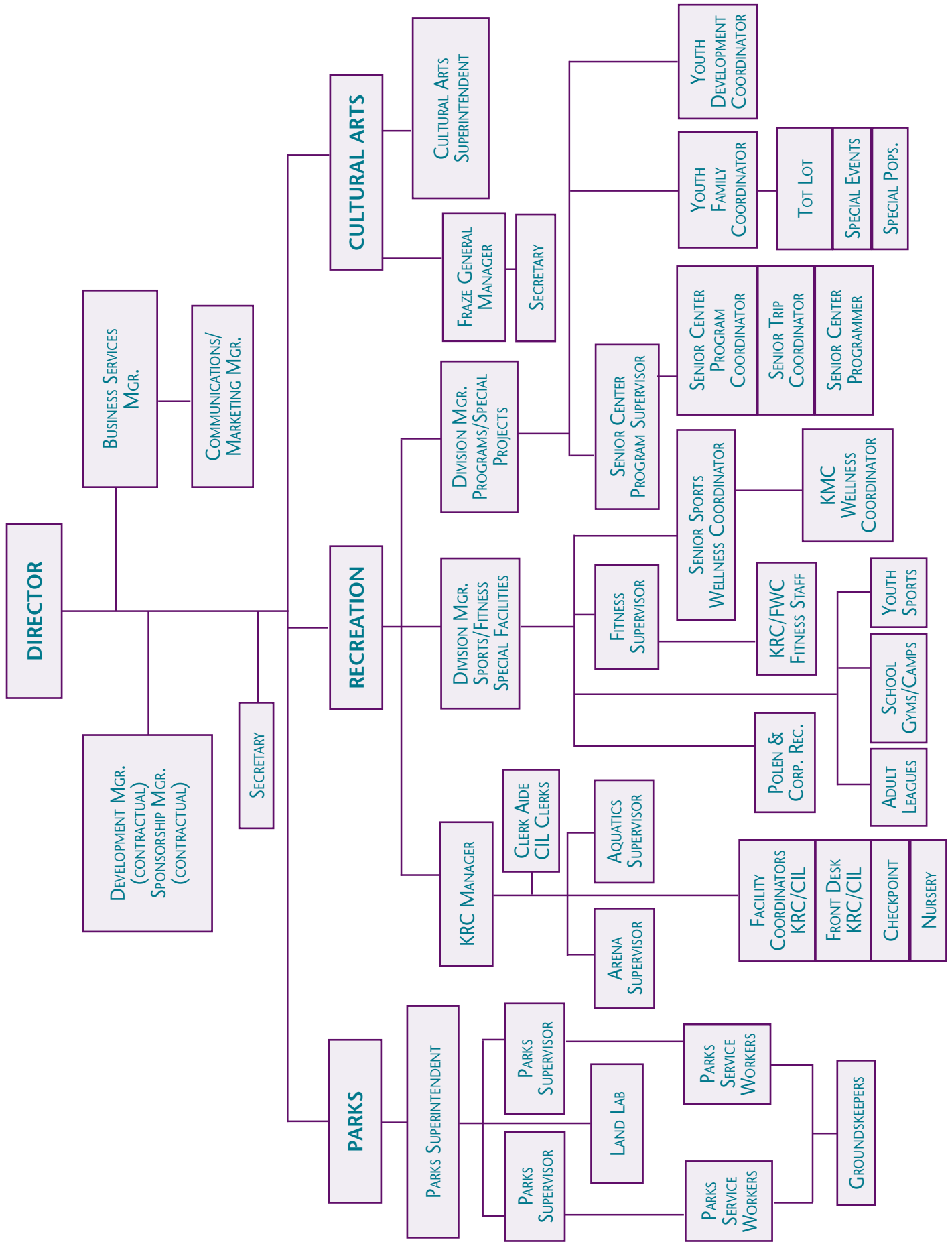
# 2009 STATISTICS



## RENTAL ATTENDANCE

|                           | 2008   | 2009   |
|---------------------------|--------|--------|
| GYMNASIUM .....           | 16,067 | 12,917 |
| KRC .....                 | 23,145 | 26,016 |
| SENIOR CENTER .....       | 5,267  | 9,097  |
| ICE ARENA .....           | 55,733 | 44,391 |
| MAIN POOL/WATER PARK .... | 29,537 | 33,295 |
| POLEN FARM.....           | 19,544 | 23,666 |







## The City of Kettering

3600 Shroyer Road, Kettering, OH 45429  
Phone: (937) 296-2454 Fax: (937) 296-3242

**[kettprca@ketteringoh.org](mailto:kettprca@ketteringoh.org)**

*Editors: Claudine Heizer & Bill Tschirhart;  
Design, Production and Printing: Administrative Support  
Cover Photography by: Gary Roeckner*