

2010

ANNUAL REPORT



CITY OF KETTERING
PARKS, RECREATION AND CULTURAL ARTS DEPARTMENT

WELCOME FROM DIRECTOR



Dear Friends,

In 2010, many of your facilities received a face lift or major improvements. We adopted a theme to celebrate the reopening of these facilities and parks – Celebrate Great Places to

Play, Renew, Connect and Be Active. If you've been to the new parks and facilities, undoubtedly you've seen that they embody all of that and more!

By the end of 2010, construction was well under way at the Kettering Recreation Complex along with several neighborhood parks including Kennedy, Oak, Van Buren and Wenzler. The grand openings for the KRC and these parks took place the spring of 2011. We are also excited about the unveiling of our two public art projects created by you – *The Egg* at Kennedy Park and *The Friendship Arch* at Wenzler Park. Over 1,000 residents made their mark in creating these one-of-a-kind works of art. We are thrilled about the installation of a permanent retractable roof over the indoor pool as well. This improvement will provide better energy efficiency and greater programming flexibility.

We hope you enjoy playing in the neighborhood parks, working out in the new fitness facility or enjoying the water park. We will continue to provide great places to play, renew, connect and be active as we look forward to another productive and successful year in 2011.

All the best!

A handwritten signature in black ink that reads "Mary Beth Thaman".

Mary Beth Thaman

Director of Parks, Recreation and Cultural Arts Department



Public meetings were held throughout 2010 to gather resident feedback regarding parks and facility renovations. Grand openings of the following parks and the Kettering Recreation Complex were scheduled:

April 2011

New Kettering Recreation Complex Fitness Center

May 14, 2011

Oak Park
Wenzler Park

May 21, 2011

Kennedy Park
Van Buren Park

June 4, 2011

Adventure Reef Water Park

June 25, 2011

Kettering Recreation Complex

Parks scheduled for grand opening in 2012:

Berwin Park	Irelan Park
Glaser Park	Oak Creek Park
Kantner Park	Tait Park
Southern Hills Park	Ernst Park
Walther Park	State Farm Park
Blackhawk Park	

Parks and facilities scheduled for completion in 2012:

The Habitat Environmental Education Center
Southdale Park

BOND ISSUE PROJECTS



RECREATION

The *Kettering Youth Leadership Academy* celebrated the graduation of its fifth class of young leaders. The students in grades 6-12 representing each school in Kettering participate in a year-long experience immersing them in all aspects of our community—schools, local government, businesses, social services, health care, public safety and volunteering. This year's graduating class coordinated the provision of holiday meals to the residents of Kettering Commons for their graduation project.

Bernie Harris was recognized for his 43 years of service to the City of Kettering with the naming of the *Bernie Harris Softball Complex* at Delco Park. The complex was officially dedicated at the Go Fourth! celebration on July 4.

Volunteers amassed 3,538 hours with youth sports coaches in basketball and soccer leagues and martial arts program instruction (Tae Kwon Do and Judo classes).

The *Martial Arts Program* served 1,072 participants with 60 different classes in seven different disciplines at the Kettering Recreation Complex. Aikido returned to our program offering this year after a two-year hiatus.

Polen Farm had 191 rentals with a combined 1,004 rental hours. This compares to 170 rentals with 1,015 rental hours from the previous year.

The fitness staff was restructured with the addition of three new regular part-time coordinator positions (KRC Fitness Coordinator, KFWC Fitness Coordinator, Group Exercise Coordinator).



As part of our attempt to increase recreational opportunities for adaptive populations, the **Special Populations Sport Clinic Series** featured three events: UD Women's Basketball Spirit Night with 60 in attendance, Bowling with 60 in attendance, and Dayton Dragons Clinic and Game with 120 in attendance. These events were run in conjunction with Montgomery County.



The Kettering Recreation Complex, Kettering Parks and Kettering City Schools held 38 different sports camps with 86 different sessions this summer, serving 931 children.

Trained in CPR, 24 seniors will alternately staff our various drop-in senior sports programs (tennis, basketball and volleyball), improving the safety of our senior sports programs.

The **Kettering Recreation Complex** hosted a local competition this past summer for the Senior Olympics. Shuffleboard had 12 participants, tennis had 25 participants, and basketball had 6 participants.

The **Employee Wellness Program** continues to serve the City's workforce with physical activities and exercise demonstrations, lectures and various health screenings. Thirteen lectures were conducted. A total of 238 employees participated in the HRA process and 130 employees actively participated in the incentive program.

The **Adult League** program served 7,001 participants in our softball, senior softball, basketball, volleyball, sand volleyball and corn hole leagues.

We have seen 195,962 patrons exercising in our two fitness centers, including 64,053 walkers and joggers on our two indoor tracks and 40,977 group exercisers in our drop-in group exercise programs at the Kettering Recreation Complex, Charles I. Lathrem Senior Center and the Kettering Fitness & Wellness Center.

Enrollment in camps is up 24% compared to July 2009 resulting in 22% increased revenue. Even with increased expenses due to enrollment, net profit is up 14% over July 2009.

RECREATION



Camp Discovery was 91% full this summer. The addition of a new age segment contributed to the additional unfilled spaces. We are confident the program will continue to grow to fill capacity.

Go 4th! 2010 took place at Delco Park with a crowd estimated at 75,000. We had a record number of vendors and beautiful weather. The crowd enjoyed a performance from “The Stumps” and a spectacular fireworks show.

The *Kettering Parks Foundation* was awarded a \$63,540 ODOT grant to purchase two minivans with wheelchair lifts to increase the efficiency and cost recovery of our Senior Transportation Program.

Partners for Healthy Youth was awarded ODADAS grant funds for the state fiscal year of 2011. The funds will support successful PFHY initiatives such as the Kettering Youth Council, Kettering Youth Leadership Academy, Kettering Youth Month, and Cops and Kids Camp.

With financial contributions from Mathile Foundation, Kettering Parks Foundation, Montgomery County Department of Job and Family Services and CDBG, a free summer camp was provided for 24 Kettering youth. Guidance counselors at Beavertown, Greenmont and Kennedy Elementary Schools identified the students most in need from each school. Campers received transportation to and from camp each day as well as a nutritious breakfast and lunch.

Funds from Montgomery County Department of Job and Family Services TCBC Program that have supported our *After-School Enrichment Program* in partnership with the Kettering City Schools are due to expire this year. We met with the school principals and administrators to develop a model to sustain these valuable programs in 2011 and beyond.

AARP Tax Aide volunteers assisted 1,501 households with their 2009 federal tax returns at the *Lathrem Senior Center*, almost 150 more than last year.

Second Annual Partners for Healthy Youth *Community Day of Service* was held on April 24. Teams completed property maintenance at two Kettering homes, hosted three car washes that raised nearly \$400 (in the rain!) for the Kettering Backpack Program and assembled 50 desks and stools as part of Project Homework Bound—an effort to provide dedicated study spaces for Kettering students in need.

Construction began on several neighborhood parks including Wenzler, Oak, Van Buren and Kennedy Parks. These projects included new soft surface material on playgrounds and the City's first splash pad.

Several public meetings were held for parks renovations and the new environmental education center, the *Habitat Nature Center*.

The grand opening was held for *Pondview Park* in April 2010, the first universally designed self-guided environmental park in Ohio.

The *Land Lab*, an environmental education program held at Pondview and Southdale Parks, was attended by 2,846 Kettering City Schools students.

Public meetings were held to help facilitate designs for the sports facilities at Ernst Park and State Farm Park.

Public meetings were also held to facilitate future park developments. As construction began on the Group I parks, the design teams were preparing construction documents for the Group II parks. The bidding process for these parks occurred late in the year.



During the year of 2010, a total of 52 events were held at *Fraze Pavilion*. The 20th anniversary season takes place in 2011.

In spite of a rainy June and an exceptionally hot July and August, attendance exceeded 165,000 visitors.

Fraze ranked 43 on Pollstar Magazine's Top 100 Amphitheaters world wide based on ticket sales.

Fraze Spotlight Magazine, a 48-page "coffee table quality" magazine was launched with advertising sold through the Kettering Moraine Oakwood Chamber of Commerce.

CULTURAL ARTS



Working with the Dayton Dragons, the Maroon 5 concert was successfully moved from Fifth Third Field to Kettering on August 31.

The year of 2010 ended with a budget surplus for the third time since 2005.

The first show of 2010 was put on sale February 6, 2010 with 6 inches of snow on the ground and a line of approximately 20 people waiting for us to open!

Kettering Children's Theatre provided two productions in 2010. The winter production of *Rumpelstiltskin* included six performances from March 12 through 21. A total of 540 individuals from pre-schoolers to senior citizens attended the performance. The fall production of *Hansel and Gretel* held six performances from November 11 through 20 with a total audience of 461.

The *Rosewood Gallery* produced ten individual artist exhibitions from throughout the United States and three special juried competitions for local, regional and midwest artists. *United Arts and Education* became our sponsorship partner for the three competitions providing \$3,300 in jury awards. In 2010, over 13,674 individuals visited the gallery and the public openings. Amy Anderson organized the exhibitions and competitions.

Kathryn Palmer and Karen Rensel retired after years of service to the City. Kathryn Palmer served over 30 years and Karen Rensel served a total of 24 years as regular part-time staff.

Mike Puckett and Traci Heaps were promoted at Rosewood to these vacant positions, with Mike Puckett as Adult Program Coordinator and Traci Heaps as Facility Coordinator. Also hired as new staff at Rosewood in 2010 was Summer Figuerio.

Summer Art Camps were a great success at Rosewood Arts Centre in 2010. A total of 470 youths enrolled in 38 summer camps during a nine-week period in June, July and August, recording an 18% increase over the previous

year. In 2009, 32 camps were held and 407 youth enrolled. Justin Ingram coordinated Art Camps with a staff of five.

In November the *Kettering City Council* was presented an Award of Merit from the Dayton Chapter of the American Institute of Architecture for our unique bus shelters. The bus shelters were collaborated between the CitySites Art in Public Places program in Kettering, Kettering Engineering Department and the Miami Valley Regional Transit Authority. Designed by artist and architect, Mary Rogero, nine bus shelters have been placed throughout Kettering as a signature icon of Kettering.

The CitySites Kettering Art in Public Places program initiated three public art projects in 2010.

Two of the projects were coordinated with the bond projects for the renovations of the parks. J. F. Kennedy Park was the site of a six-foot handmade mosaic tiled EGG and plaza by Yellow Springs artists Beth Holyoke and Kaethi Seidl. Working with over 550 individuals, the tiles reflect what the parks mean to the community through images and symbols. Wenzler Park is the site of a sixteen foot-tall stainless steel arch designed by Fairborn artist, Tess Little. Over 285 community members of all ages participated in tracing their hands with a personalized symbol that would identify their hand from others. The hands will appear on the arch as well as the two stainless steel benches facing the arch plaza after installation.

The third public art project is part of the major renovation to the Kettering Government Center on Shroyer Road. Erin McIntyre of LeGrange, Kentucky, was selected from a call for artists from Ohio, Indiana, Michigan, Kentucky, Pennsylvania and West Virginia. The selected design was a beautiful 150 square foot stained glass window for the front of the Government Center and viewed at the level of the Council Chambers.



CITY OF KETTERING
PARKS, RECREATION AND CULTURAL ARTS DEPARTMENT
2010 FINANCIAL REPORT

COST CENTER	2010 BUDGET EXPENDITURES	2010 BUDGET REVENUES	COST RECOVERY %	2010 ACTUAL EXPENDITURES	2010 ACTUAL REVENUES	COST RECOVERY %
2400 - ADMINISTRATION	850,992	28,300	3%	819,437	44,706	5%
ADMINISTRATION TOTAL	850,992	28,300	3%	819,437	44,706	5%
2401 - POLEN FARM FACILITY	209,969	143,550	68%	195,889	151,314	77%
2402 - AQUATICS PROGRAMS/FACILITY	820,694	493,400	60%	827,915	581,235	70%
2403 - ARENA PROGAM/FACILITY	621,230	641,700	103%	604,023	571,623	95%
2404 - CIL SENIOR TRANSPORTATION	138,781	29,950	22%	123,282	26,150	21%
2405 - NATURE CENTER FACILITY	43,268	12,000	28%	38,623	13,699	35%
2406 - KRC FACILITY	1,415,086	78,700	6%	1,431,019	82,523	6%
2407 - CONCESSIONS	121,884	148,000	121%	123,155	146,978	119%
2408 - NURSERY	44,952	14,500	32%	39,489	7,667	19%
2410 - SPORTS PROGRAMS/FACILITY	270,894	271,610	100%	275,049	207,036	75%
2412 - FAIRMONT FITNESS/FACILITY	328,960	316,737	96%	282,467	257,796	91%
2413 - FITNESS PROGRAMS/FACILITY	310,774	398,525	128%	277,763	286,445	103%
FACILITIES TOTAL	4,326,491	2,548,672	59%	4,218,674	2,332,467	55%
2411 - SENIOR ADULT PROGRAMS	267,170	137,500	51%	224,429	112,548	50%
2414 - ADULT LEAGUES PROGRAMS	141,000	157,000	111%	119,182	137,902	116%
2415 - SPECIAL POPULATIONS PROGRAMS	69,760	35,050	50%	38,685	28,378	73%
2416 - SPECIAL EVENTS	187,822	18,825	10%	154,454	18,993	12%
2417 - YOUTH PROGRAMS	125,313	109,510	87%	112,988	120,642	107%
2418 - TOT LOT PROGRAM	86,712	95,300	110%	81,978	80,949	99%
PROGRAMS TOTAL	877,777	553,185	63%	731,714	499,411	68%
TOTAL - RECREATION DIVISION	5,204,268	3,101,857	60%	4,950,388	2,831,878	57%
2453 - GENERAL PARK MAINTENANCE	2,744,474	39,850	1%	2,507,126	39,227	2%
TOTAL - PARKS DIVISION	2,744,474	39,850	1%	2,507,126	39,227	2%
2440 - ROSEWOOD ARTS CENTRE	377,210	49,450	13%	374,293	45,059	12%
2441 - ROSEWOOD PROGRAMS	285,860	219,503	77%	292,525	193,457	66%
TOTAL - CULTURAL ARTS DIVISION	663,070	268,953	41%	666,819	238,516	36%
2200 - LPCC AMPHITHEATRE & FRAZE PAVILION	2,983,560	2,140,000	72%	2,909,108	2,724,216	94%
2210 - FRAZE CONCESSIONS	314,829	725,000	230%	292,135	786,835	269%
TOTAL - FRAZE PAVILION	3,298,389	2,865,000	87%	3,201,243	3,511,052	110%
TOTAL PRCA	\$12,761,193	\$6,303,960	49%	\$12,145,013	\$6,665,379	55%



ENROLLMENT FIGURES

	2009	2010
TOT LOT.....	99	119
YOUTH	1,702	1,874
ACCESS TO RECREATION	176	181
FITNESS/WELLNESS (KRC)	1,938	3,235
FITNESS/WELLNESS (KFWC) ..	1,546	1,617
SPORTS ACTIVITIES.....	6,538	5,633
ICE SKATING.....	1,507	1,388
AQUATICS.....	2,888	2,255
ARTS.....	2,223	2,393

2010 STATISTICS



DROP-IN / PASS VISITS

	2009	2010
KRC FITNESS ROOM.....	96,157 ...	100,364
KFWC FITNESS ROOM	101,932	98,328
AEROBICS (KRC).....	43,662	40,372
AEROBICS (KFWC).....	1,112	605
WALK/RUN TRACK.....	59,299	30,582
GYMNASIUM	3,594	3,946
NURSERY	5,696	4,639
SKATING.....	23,944	22,724
SWIMMING	102,598 ...	128,281



FRAZE ATTENDANCE

	2009	2010
FREE CONCERT ATTENDANCE.....	18,423	10,500
FESTIVAL ATTENDANCE.....	39,685	33,650
TICKETED PERFORMANCE ATTENDANCE ..	87,601	77,371



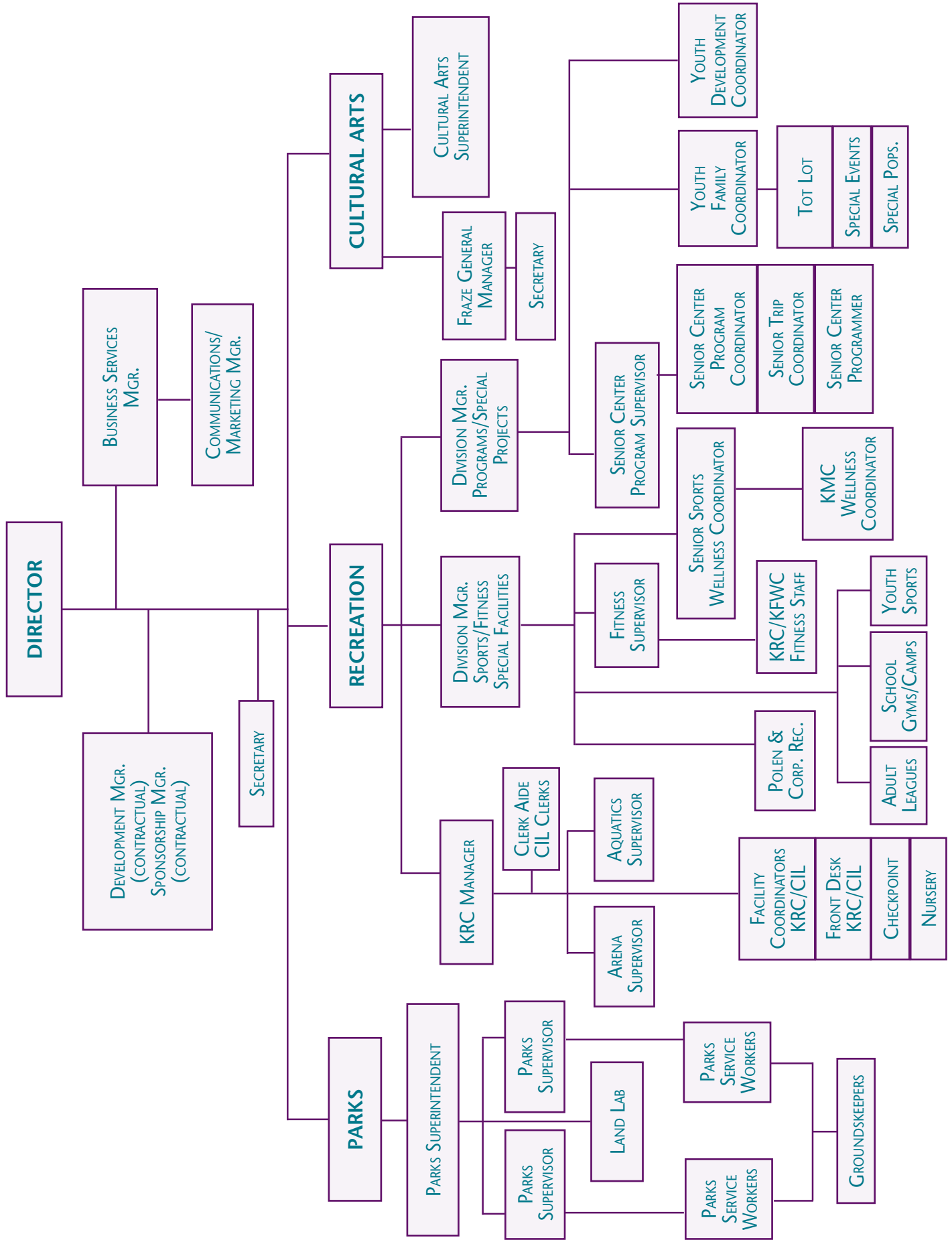
2010 STATISTICS



RENTAL ATTENDANCE

	2009	2010
GYMNASIUM	12,917	28,556
KRC	26,016	28,556
SENIOR CENTER	9,097	14,999
ICE ARENA.....	44,391	35,475
MAIN POOL / WATER PARK ..	33,295	32,860
POLEN FARM.....	23,666	29,627







The City of Kettering

3600 Shroyer Road, Kettering, OH 45429
Phone: (937) 296-2454 Fax: (937) 296-3242

kettprca@ketteringoh.org

Editors: Claudine Heizer & Bill Tschirhart;
Design, Production and Printing: Administrative Support
Cover Photography by: Gary Roeckner