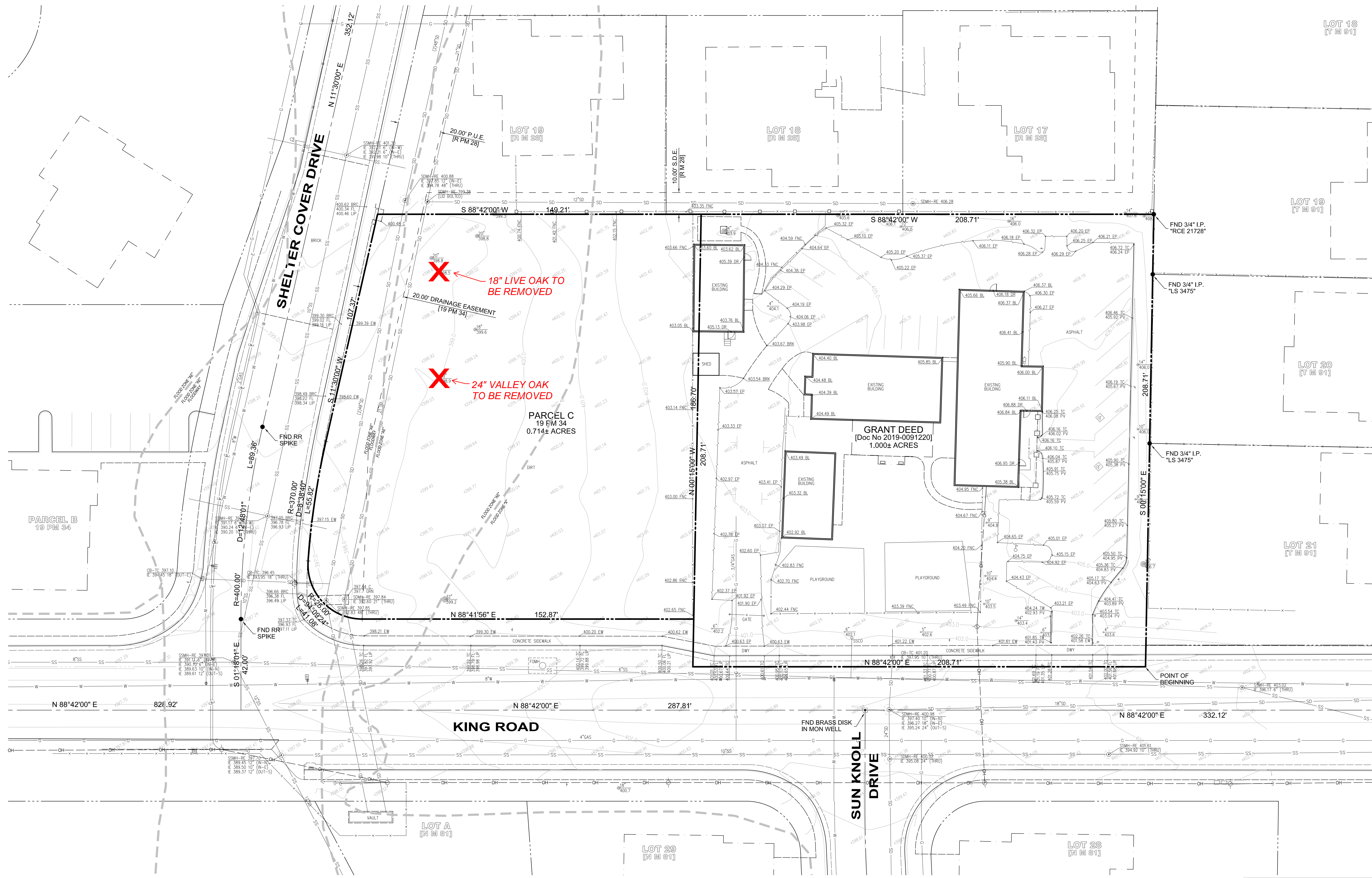


ABBREVIATIONS

BRC	BACK OF ROLLED CURB
BL	BUILDING
BRK	BRICK
CB	CATCH BASIN
DR	DOOR
DWY	DRIVEWAY
EP	EDGE OF PAVEMENT
EW	EDGE OF WALK
FNC	FENCE
FOH	FIBER OPTIC MANHOLE
GRN	GROUND
IE	INVERT ELEVATION
LIP	LIP OF GUTTER
PV	PAVEMENT
RE	RIM ELEVATION
SDMH	STORM DRAIN MANHOLE
SSMH	SANITARY SEWER MANHOLE
TC	TOP OF CURB

LEGEND

PROPERTY LINE	---
ADJACENT PROPERTY LINE	---
CENTERLINE	---
EASEMENT	---
NON-ACCESS	---
APPROX. FLOOD ZONE BOUNDARY	---
BUILDING LINE W/ DOOR	---
BUILDING OVERHANG	---
FOUND MONUMENT AS NOTED	●
FOUND IRON PIPE OR AS NOTED	●
BOLLARD LIGHT	●
LIGHT	○
STREET LIGHT	○
TRAFFIC SIGNAL POLE	○
TRANSFORMER	○
FIRE HYDRANT	○
STORM DRAIN MANHOLE	○
SANITARY SEWER MANHOLE	○
CLEAN OUT	○
GAS METER	○
UTILITY POLE W/ GUY WIRE	○
VALVE	○
CATCH BASIN / DROP INLET	○
WATER METER	○
FIRE DEPARTMENT CONNECTION	○
BACK FLOW PREVENTER	○
POST INDICATOR VALVE	○
UTILITY BOX (SIZE VARIES)	○
SIGN	○
TITLE REPORT EXCEPTION NUMBER	○
RECORD INFORMATION W/ REFERENCE	○
TREE W/ SIZE AND ELEVATION	○
SPOT ELEVATION	○
CONTOUR	---
INDEX CONTOUR	---
CURB	---
CURB & GUTTER	---
CONCRETE	---
FENCE	---
RETAINING WALL	---
EDGE OF PAVEMENT	---
SANITARY SEWER	---
STORM DRAIN	---
WATER	---
GAS	---
UNDERGROUND ELECTRIC	---
OVERHEAD	---



OAK TREE REMOVAL EXHIBIT

2645 KING ROAD

No.	REVISION	BY	Date:
1			
2			
3			
4			
5			
6			
7			
8			
9			
10			
11			
12			
13			
14			
15			
16			
17			
18			
19			
20			
21			
22			
23			
24			
25			
26			
27			
28			
29			
30			
31			
32			
33			
34			
35			
36			
37			
38			
39			
40			
41			
42			
43			
44			
45			
46			
47			
48			
49			
50			
51			
52			
53			
54			
55			
56			
57			
58			
59			
60			
61			
62			
63			
64			
65			
66			
67			
68			
69			
70			
71			
72			
73			
74			
75			
76			
77			
78			
79			
80			
81			
82			
83			
84			
85			
86			
87			
88			
89			
90			
91			
92			
93			
94			
95			
96			
97			
98			
99			
100			

LOOMIS

CALIFORNIA

1
Sheet