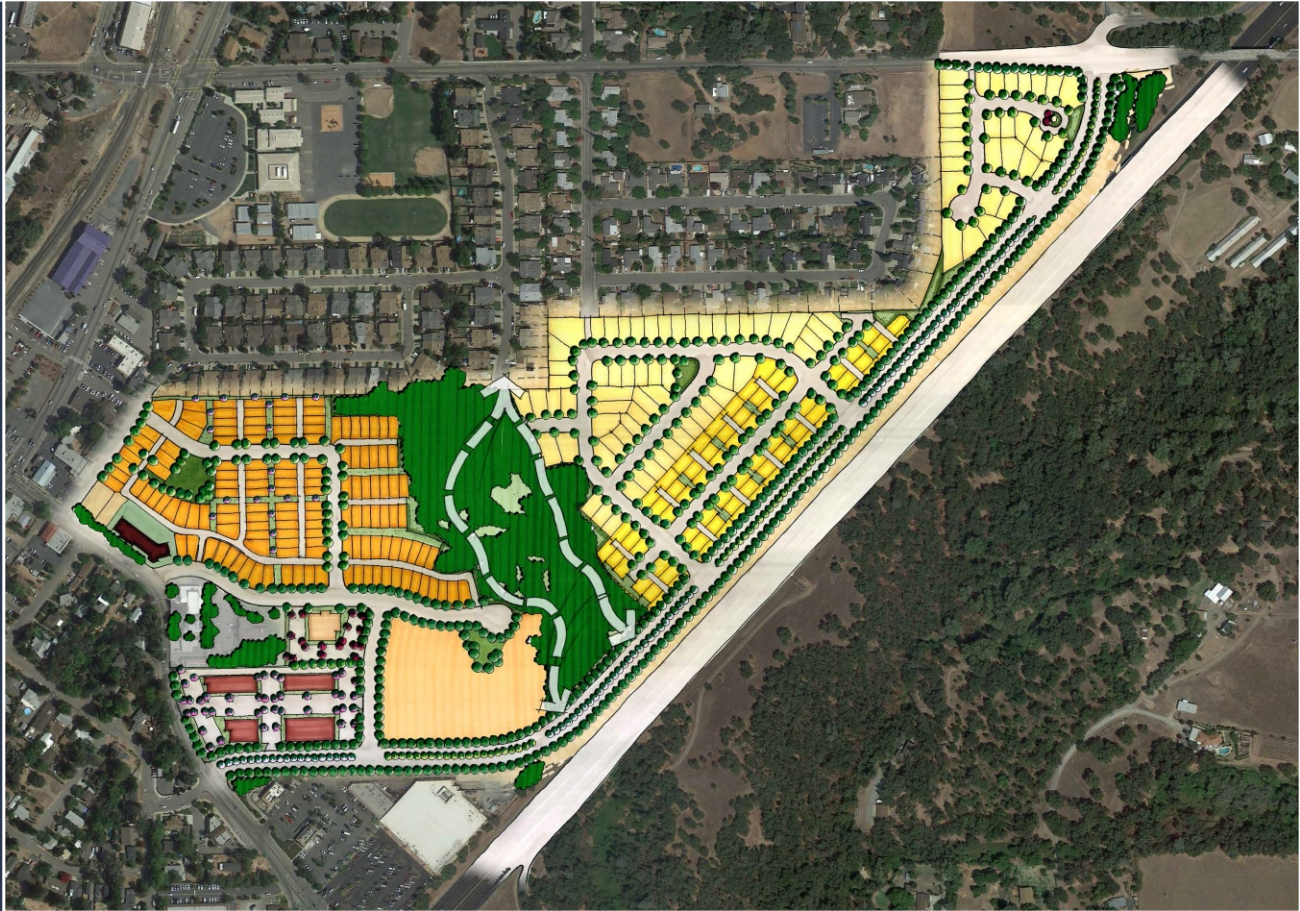


Environmental Impact Report for the

# The Village at Loomis



July 2017

PREPARED FOR:

**Town of Loomis**

3665 Taylor Road

Loomis, California 95650

Contact: Bob King, Town Planner

PREPARED BY:

**DUDEK**

853 Lincoln Way, Suite 208

Auburn, California 95603

Contact: Katherine Waugh



**The Village at Loomis  
Final Environmental Impact Report**

*Prepared for:*

**Town of Loomis**  
3665 Taylor Road  
Loomis, California 95650

*Prepared by:*

**DUDEK**  
853 Lincoln Way, Suite 208  
Auburn, California 95603  
*Contact: Katherine Waugh, AICP*

**JULY 2017**



# TABLE OF CONTENTS

---

<b><u>Section</u></b>	<b><u>Page No.</u></b>
<b>1 EXECUTIVE SUMMARY .....</b>	<b>1-1</b>
1.1 Project Location .....	1-1
1.2 Project Site Characteristics .....	1-1
1.3 Project Objectives .....	1-2
1.4 Description of Proposed Project Characteristics.....	1-3
1.5 Areas of Known Controversy and Issues Raised.....	1-3
1.6 Project Alternatives.....	1-4
1.7 Intended Uses of the Village at Loomis EIR .....	1-5
1.8 Summary of Impacts and Mitigation Measures .....	1-9
<b>2 INTRODUCTION.....</b>	<b>2-1</b>
2.1 Project Background.....	2-1
2.2 Purpose and Intended Use of this EIR .....	2-1
2.3 Type of EIR.....	2-2
2.4 Lead, Responsible, and Trustee Agencies .....	2-2
2.5 Scope of the EIR .....	2-3
2.6 Environmental Review Process .....	2-5
2.7 Document Organization .....	2-7
<b>3 PROJECT DESCRIPTION .....</b>	<b>3-1</b>
3.1 Study Area Characteristics.....	3-1
3.2 General Plan and Zoning Designations.....	3-6
3.3 Project Objectives .....	3-7
3.4 Project Description.....	3-8
3.5 Entitlements and Required Approvals .....	3-27
<b>4 ENVIRONMENTAL ANALYSIS.....</b>	<b>4-1-1</b>
4.1 Land Use .....	4-1-1
4.1.1 Environmental Setting .....	4-1-1
4.1.2 Regulatory Setting .....	4-1-10
4.1.3 Impacts.....	4-1-15
4.1.4 Mitigation Measures .....	4-1-38
4.2 Population and Housing.....	4-2-1
4.2.1 Environmental Setting .....	4-2-2
4.2.2 Regulatory Setting .....	4-2-5
4.2.3 Impacts.....	4-2-6
4.2.4 Mitigation Measures .....	4-2-13

## TABLE OF CONTENTS (CONTINUED)

<u>Section</u>	<u>Page No.</u>
4.3 Biological Resources .....	4.3-1
4.3.1 Environmental Setting .....	4.3-1
4.3.2 Regulatory Setting .....	4.3-15
4.3.3 Impacts .....	4.3-29
4.3.4 Mitigation Measures .....	4.3-49
4.4 Cultural Resources .....	4.4-1
4.4.1 Environmental Setting .....	4.4-1
4.4.2 Regulatory Setting .....	4.4-9
4.4.3 Impacts .....	4.4-15
4.4.4 Mitigation Measures .....	4.4-22
4.5 Visual Resources .....	4.5-1
4.5.1 Existing Setting .....	4.5-1
4.5.2 Regulatory Setting .....	4.5-4
4.5.3 Impacts .....	4.5-8
4.5.4 Mitigation Measures .....	4.5-21
4.6 Transportation .....	4.6-1
4.6.1 Environmental Setting .....	4.6-1
4.6.2 Regulatory Setting .....	4.6-9
4.6.3 Impacts .....	4.6-16
4.6.4 Mitigation Measures .....	4.6-68
4.7 Noise .....	4.7-1
4.7.1 Environmental Setting .....	4.7-1
4.7.2 Regulatory Setting .....	4.7-8
4.7.3 Impacts .....	4.7-11
4.7.4 Mitigation Measures .....	4.7-24
4.8 Air Quality .....	4.8-1
4.8.1 Environmental Setting .....	4.8-2
4.8.2 Regulatory Setting .....	4.8-10
4.8.3 Impacts .....	4.8-14
4.8.4 Mitigation Measures .....	4.8-28
4.9 Greenhouse Gas Emissions .....	4.9-1
4.9.1 Environmental Setting .....	4.9-1
4.9.2 Regulatory Setting .....	4.9-4
4.9.3 Impacts .....	4.9-11
4.9.4 Mitigation Measures .....	4.9-15

**TABLE OF CONTENTS (CONTINUED)**

<b><u>Section</u></b>	<b><u>Page No.</u></b>
4.10	Geology, Soils, Seismicity, and Paleontology ..... 4.10-1
4.10.1	Environmental Setting ..... 4.10-1
4.10.2	Regulatory Setting ..... 4.10-9
4.10.3	Impacts ..... 4.10-12
4.10.4	Mitigation Measures ..... 4.10-25
4.11	Hydrology and Water Quality ..... 4.11-1
4.11.1	Environmental Setting ..... 4.11-2
4.11.2	Regulatory Setting ..... 4.11-8
4.11.3	Impacts ..... 4.11-14
4.11.4	Mitigation Measures ..... 4.11-32
4.12	Public Services and Utilities ..... 4.12-1
4.12.1	Setting ..... 4.12-1
4.12.2	Regulatory Setting ..... 4.12-10
4.12.3	Impacts ..... 4.12-19
4.12.4	Mitigation Measures ..... 4.12-52
4.13	Hazards and Hazardous Materials ..... 4.13-1
4.13.1	Environmental Setting ..... 4.13-2
4.13.2	Regulatory Setting ..... 4.13-6
4.13.3	Impacts ..... 4.13-9
4.13.4	Mitigation Measures ..... 4.13-22
<b>5</b>	<b>ALTERNATIVES ..... 5-1</b>
5.1	Introduction ..... 5-1
5.2	Project Objectives ..... 5-2
5.3	Alternatives Analysis ..... 5-3
5.3.1	Alternative 1a: No Project/No Build ..... 5-6
5.3.2	Alternative 1b: No Project/Existing Designations ..... 5-11
5.3.3	Alternative 2: Transportation Alternative ..... 5-19
5.3.4	Alternative 3a: Reduced Density Alternative and Alternative 3b: Reduced Density Transportation Alternative ..... 5-47
5.3.5	Alternative 4a: Reduced Footprint and Alternative 4b: Reduced Footprint Transportation Alternative ..... 5-56
5.4	Summary Matrix ..... 5-65
5.5	Environmentally Superior Alternative ..... 5-67
<b>6</b>	<b>OTHER CEQA CONSIDERATIONS ..... 6-1</b>
6.1	Effects Not Found to Be Significant ..... 6-1

**TABLE OF CONTENTS (CONTINUED)**

<b><u>Section</u></b>	<b><u>Page No.</u></b>
6.2 Significant and Unavoidable Environmental Impacts .....	6-1
6.3 Significant and Irreversible Environmental Changes .....	6-2
6.4 Growth Inducement .....	6-4
6.5 Energy Consumption .....	6-5
6.5.1 Energy Setting.....	6-6
6.5.2 Regulatory Framework .....	6-7
6.5.3 Impacts.....	6-10
6.5.4 Mitigation Measures .....	6-18
<b>7 INTRODUCTION TO THE RESPONSES TO COMMENTS .....</b>	<b>7-1</b>
7.1 Responses to Comments .....	7-1
7.2 CEQA Requirements .....	7-1
7.3 Draft EIR Revisions.....	7-2
7.4 Certification of the Final EIR .....	7-2
7.5 List of Commenters and Responses.....	7-3
<b>8 MASTER RESPONSES .....</b>	<b>8-1</b>
1 Public Notification and Draft EIR Review .....	8-1
2 General Plan Consistency .....	8-3
3 Proposed Planned Development Zoning.....	8-14
4 Alley-Loaded Residences .....	8-15
5 Parking .....	8-16
6 Traffic Impacts and Mitigation .....	8-19
7 Affordable Housing .....	8-30
8 Historical Resource Impacts .....	8-32
9 School Capacity .....	8-34
10 Individual Oak Tree Impacts and In-Lieu Fees .....	8-35
11 Oak Woodland Impacts and Mitigation.....	8-36
12 Park Impacts and In-Lieu Fees .....	8-36
13 Alternatives Analysis .....	8-39
14 Greenhouse Gas Emissions Reduction Feasibility .....	8-40
<b>9 RESPONSE TO COMMENTS.....</b>	<b>9-1</b>
<b>10 REFERENCES.....</b>	<b>10-1</b>
<b>11 LIST OF PREPARERS.....</b>	<b>11-1</b>



## FIGURES

3-1	Regional Map.....	3-30
3-2	Vicinity Map.....	3-33
3-3	Aerial Map.....	3-35
3-4	APN Parcel Map.....	3-37
3-5	Site Illustrative.....	3-39
3-6	General Plan Land Use Designations.....	3-41
3-7	Zoning Designations.....	3-43
3-8	Modified Transportation Alternative Site Illustrative.....	3-45
4.1-1	Site Photos.....	4.1-39
4.1-2	Parks and Open Space Map.....	4.1-41
4.1-3	Village Single-Family Residential District.....	4.1-43
4.1-4	Village Residential District.....	4.1-45
4.1-5	Village Mixed-Use District.....	4.1-47
4.1-6	Commercial/Office District.....	4.1-49
4.1-7	High-Density Multiple-Family District.....	4.1-51
4.1-8	Modified Transportation Alternative Parks and Open Space.....	4.1-53
4.1-9	Modified Transportation Alternative Village Single-Family Traditional and Green Court Districts.....	4.1-55
4.1-10	Modified Transportation Alternative Village Residential District.....	4.1-57
4.1-11	Modified Transportation Alternative Village Mixed-Use District.....	4.1-59
4.1-12	Modified Transportation Alternative Commercial/Office District.....	4.1-61
4.1-13	Modified Transportation Alternative Village High Density Residential District.....	4.1-63
4.3-1	Habitat Map.....	4.3-55
4.3-2	Wetland Delineation Map.....	4.3-57
4.3-3	CNDDDB Species Occurrence Locations.....	4.3-59
4.3-4	Blue Oak Woodland Occurrence.....	4.3-61
4.5-1	Key Viewpoint Locations.....	4.5-23
4.5-2	Key Viewpoint 1 and Key Viewpoint 2.....	4.5-25
4.5-3	Key Viewpoint 3 and Key Viewpoint 4.....	4.5-27
4.5-4	Key Viewpoint 5 and Key Viewpoint 6.....	4.5-29
4.5-5	Key Viewpoint 7 and Key Viewpoint 8.....	4.5-31
4.5-6	Key Viewpoint 9 and Key Viewpoint 10.....	4.5-33
4.6-1	Existing Traffic Volumes and Lane Configurations.....	4.6-70
4.6-2	Project Only Traffic Volumes and Lane Configurations.....	4.6-73
4.6-3	Cumulative Without Project Traffic Volumes and Lane Configurations.....	4.6-75
4.6-4	Existing Plus Project Traffic Volumes and Lane Configurations.....	4.6-77
4.6-5	Cumulative Plus Project Traffic Volumes and Lane Configurations.....	4.6-79
4.6-6	Cumulative Plus Project Mitigated Traffic Volumes and Lane Configurations.....	4.6-81

**TABLE OF CONTENTS (CONTINUED)**

	<u>Page No.</u>
4.6-7 Modified Transportation Alternative Traffic Volumes and Lane Configurations.....	4.6-83
4.6-8 Existing Plus Modified Transportation Alternative Traffic Volumes and Lane Configurations.....	4.6-85
4.6-9 Cumulative Plus Modified Transportation Alternative Traffic Volumes and Lane Configurations.....	4.6-87
4.7-1 Ambient Noise Measurement Locations.....	4.7-27
4.7-2 Project Site Plan and Recommended Noise Barrier Locations.....	4.7-29
4.10-1 Project Site Topography .....	4.10-27
4.10-2 Soil Types .....	4.10-29
4.10-3 Grading Plan – Phase A .....	4.10-31
4.10-4 Grading Plan – Phases B and C .....	4.10-33
4.10-5 Grading Plan – Phase D .....	4.10-35
4.10-6 Grading Plan – Phase D .....	4.10-37
4.10-7 Grading Plan – Phases B and C .....	4.10-39
4.10-8 Grading Plan – Phase D .....	4.10-41
4.11-1 Regional Hydrology.....	4.11-33
4.11-2 Stormwater Runoff Summary.....	4.11-35
4.11-3 Pre-Project 100-Year Floodplain .....	4.11-37
4.11-4 Stormwater Runoff Summary .....	4.11-39
4.11-5 Stormwater Runoff Summary .....	4.11-41
4.12-1 Oak Parcourse Trail .....	4.12-53
5-1 Transportation Alternative.....	5-69
5-2 Reduced Footprint Alternative.....	5-71

**TABLES**

1-1 Required Approvals/Permits for the Village at Loomis .....	1-6
1-2 Impact Summary Table.....	1-10
3-1 Existing Land Use Designations and Zoning.....	3-7
3-2 Proposed Land Use Designations and Zoning .....	3-10
4.1-1 Proposed Land Use Summary.....	4.1-4
4.1-2 Proposed Rezoning .....	4.1-5
4.1-3 General Plan Designations and Zoning for Adjacent Areas .....	4.1-5
4.1-4 Summary of Approved and Proposed Developments.....	4.1-7
4.1-5 Proposed Public Purpose, Open Space and Park Parcels.....	4.1-18
4.1-6 Proposed Village Single-Family Residential District.....	4.1-20

**TABLE OF CONTENTS (CONTINUED)**

	<b><u>Page No.</u></b>
4.1-7 Proposed Village Residential District.....	4.1-22
4.1-8 Proposed Village Mixed-Use District.....	4.1-23
4.1-9 Proposed Commercial/Office District.....	4.1-25
4.1-10 Proposed Commercial/Office District.....	4.1-26
4.3-1 Waters of the United States on the Project Site .....	4.3-4
4.3-2 Special-Status Species with Potential to Occur on The Village at Loomis Project Site .....	4.3-8
4.3-3 Elderberry Shrub Location and Stem Count Summary .....	4.3-12
4.3-4 Tree Conservation Ordinance Tree Removal Mitigation.....	4.3-22
4.3-5 Protected Trees Proposed for Removal.....	4.3-42
4.3-6 Tree Removal and Mitigation .....	4.3-43
4.3-7 Doc Barnes Road Tree Removal.....	4.3-44
4.6-1 Level of Service Definitions .....	4.6-5
4.6-2 Existing Intersection LOS.....	4.6-7
4.6-3 Existing Daily Traffic Volumes and LOS .....	4.6-8
4.6-4 Trip Generation Rates .....	4.6-16
4.6-5 Project Trip Generation.....	4.6-17
4.6-6 Trip Distribution Assumptions .....	4.6-18
4.6-7 Year 2030 No Project and Plus Project Intersection LOS .....	4.6-24
4.6-8 Year 2030 No Project and Plus Project Daily Traffic Volumes and LOS.....	4.6-26
4.6-9 Existing Plus Project Intersection LOS.....	4.6-28
4.6-10 Existing Plus Project Traffic Signal Warrants .....	4.6-30
4.6-11 Existing Plus Project Daily Traffic Volumes and LOS .....	4.6-31
4.6-12 Existing Plus Project With Mitigation Intersection LOS.....	4.6-35
4.6-13 Mitigated Year 2030 Plus Project Intersection LOS .....	4.6-57
4.6-14 Year 2030 Plus Project Traffic Signal Warrants.....	4.6-59
4.7-1 Typical A-Weighted Sound Levels of Common Noise Source .....	4.7-4
4.7-2 Measured Baseline Noise Levels at Long-Term Monitoring Sites.....	4.7-6
4.7-3 Noise Reduction Offsets due to Existing Topographic Shielding .....	4.7-7
4.7-4 Existing (Baseline) Traffic Noise Levels and Distances to Traffic Noise Contours .....	4.7-7
4.7-5 Measures of Substantial Increase for Transportation Noise Exposure .....	4.7-8
4.7-6 Maximum Allowable Noise Exposure Levels (L <sub>dn</sub> ) .....	4.7-10
4.7-7 Noise Standards for Short Duration Events Near Residential Areas .....	4.7-11
4.7-8 Construction Equipment Noise Emission Levels .....	4.7-12
4.7-9 Cumulative Plus Project Traffic Noise Levels – Interior Roadways.....	4.7-15
4.7-10 Existing and Existing Plus Project Traffic Noise Levels.....	4.7-19

**TABLE OF CONTENTS (CONTINUED)**

	<u>Page No.</u>
4.7-11 Short-Term Noise Measurement Results .....	4.7-20
4.7-12 Cumulative and Cumulative Plus Project Traffic Noise Levels .....	4.7-22
4.8-1 Federal and State Ambient Air Quality Standards.....	4.8-4
4.8-2 Frequency of Air Quality Standard Violations .....	4.8-6
4.8-3 Placer County Attainment Status .....	4.8-8
4.8-4 Summary of 2012 Estimated Annual Average Emissions in Placer County (tons per day) .....	4.8-9
4.8-5 Placer County Air Pollution Control District Significance Thresholds.....	4.8-13
4.8-6 Construction Air Pollutant Emissions (pounds per day).....	4.8-20
4.8-7 Unmitigated Operational Air Pollutant Emissions (pounds per day) .....	4.8-24
4.9-1 Global Warming Potential and Atmospheric Lifetimes of Select GHGs .....	4.9-2
4.9-2 GHG Emissions (tons per year) .....	4.9-13
4.11-1 Existing Stormwater Runoff Peak Flow Rates .....	4.11-5
4.11-2 Stormwater Runoff Peak Flow Rates Post-Project Conditions.....	4.11-21
4.12-1 Summary of Parks, Trails, and Open Space .....	4.12-39
5-1 No Project/Existing Designations Trip Generation .....	5-15
5-2 Existing Plus Transportation Alternative Intersection LOS .....	5-24
5-3 Existing and Existing Plus Transportation Alternative Traffic Noise Levels.....	5-31
5-4 Transportation Alternative Impact Summary Table .....	5-36
5-5 Reduced Footprint Trip Generation .....	5-61
5-6 Project Alternatives Impacts Summary .....	5-66
6-1 Hours of Operation for Construction Equipment.....	6-11
6-2 Energy Consumption from Construction .....	6-13

INTENTIONALLY LEFT BLANK