
TOWN OF LOOMIS GENERAL PLAN CONSERVATION OF RESOURCES ELEMENT

CONSERVATION OF RESOURCES COMMITTEE MEETING #1 MARCH 24, 2021



AGENDA

- » **Introductions and Available Documents**
- » **Element Overview**
- » **Setting Review**
- » **Approach to the General Plan Update**
- » **Schedule**
- » **Discussion**



INTRODUCTIONS AND AVAILABLE DOCUMENTS



INTRODUCTIONS

- » **Town Staff**
- » **Consultant Staff**
- » **Committee Members**



AVAILABLE DOCUMENTS

Overall General Plan Update

» <https://loomis.ca.gov/2020-general-plan-update/>

Natural Resources Setting:

» <https://loomis.ca.gov/documents/natural-resources-setting/>

Cultural and Historical Resources

» <https://loomis.ca.gov/documents/cultural-and-historical-resources-setting/>

Energy Resources

» <https://loomis.ca.gov/documents/energy-resources/>

Greenhouse Gas Emissions

» <https://loomis.ca.gov/documents/greenhouse-gas-emissions/>

Air Quality

» <https://loomis.ca.gov/documents/air-quality/>



ELEMENT OVERVIEW



ELEMENT OVERVIEW

- » **Natural Resources**
- » **Open Space**
- » **Aesthetic resources**
- » **Habitat and wildlife**
- » **Cultural resources**
- » **Historical resources**
- » **Air quality**

New topics:

- » **Greenhouse gas emissions**
- » **Energy**



EXISTING GOALS

- » **To protect areas rich in wildlife of a fragile ecological nature, including areas of rare or endangered species and riparian areas, from land development impacts.**
- » **To preserve, maintain, and enhance creeks and riparian areas for their aesthetic, wildlife habitat, and recreational values.**
- » **To help protect groundwater and air quality within the Sacramento region.**
- » **To protect major open space areas and natural features within the Town, including significant topography and rock outcroppings, oak woodlands and significant specimens of native trees.**
- » **To preserve and where appropriate replicate historic areas, such as the Downtown district and fruit sheds, that contribute to Loomis' distinct character.**
- » **To encourage cultural facilities and events in Town, such as live theater and music programs.**



STATE LAW CHANGES

- » **Greenhouse gas emissions reductions**
- » **Groundwater sustainability**
- » **Native American Tribal consultation**
- » **Energy efficiency**
- » **Air quality**
- » **State wetland definition and procedures for discharge**



SETTING



NATURAL RESOURCES

- » **Antelope Creek, Secret Ravine, Sucker Ravine, Clover Valley Creek (outside the Town)**
- » **Sensitive habitats:**
 - » **Oak woodland and savanna**
 - » **Riparian and streams**
 - » **Wetlands**
 - » **Native perennial grassland**
- » **Thirteen special-status plants**
- » **Special status birds and western pond turtle**
- » **Valley elderberry longhorn beetle**
- » **Special-status bats**



CULTURAL & HISTORICAL RESOURCES

- » **65 resources have been identified**
 - » **prehistoric artifacts, including bedrock milling stations**
 - » **historic home sites**
 - » **historic commercial sites**
 - » **mining sites,**
 - » **railroads and roads**
 - » **water conveyance**
- » **Fire destroyed most of the downtown core in 1915**
- » **By the early 1920s, almost every destroyed building had been rebuilt with brick, concrete or tile**



AIR QUALITY, GHGS, AND ENERGY

- » **Transportation is the top source of ozone precursors, greenhouse gas emissions, and user of energy**
- » **Primary air quality issues are ozone and particulate matter**
- » **Permitted and unpermitted sources of toxic air contaminants**
- » **Regional climate change effects will include issues related to:**
 - » **extreme temperatures**
 - » **megadroughts, flooding and large wildfires**
 - » **water and energy availability**



APPROACH



GENERAL PLAN UPDATE APPROACH

» **Review existing goals, policies, and implementation measures**

- Keep those that are relevant as written
- Modify those that need minor updates
- Delete those that are complete, not relevant, or non-compliant
- Move and reference those that belong in another Element to reduce duplication.

» **Reorganize the goals, policies, and implementation measures with a numbering system.**

- #Goal
 - #.#Objective
 - #.#.# Policy
 - #.#.#.#Implementation Measure
- Every goal will have at least one objective, policy, and implementation measure and every objective will have at least one policy and implementation measure.



POLICY REVIEW

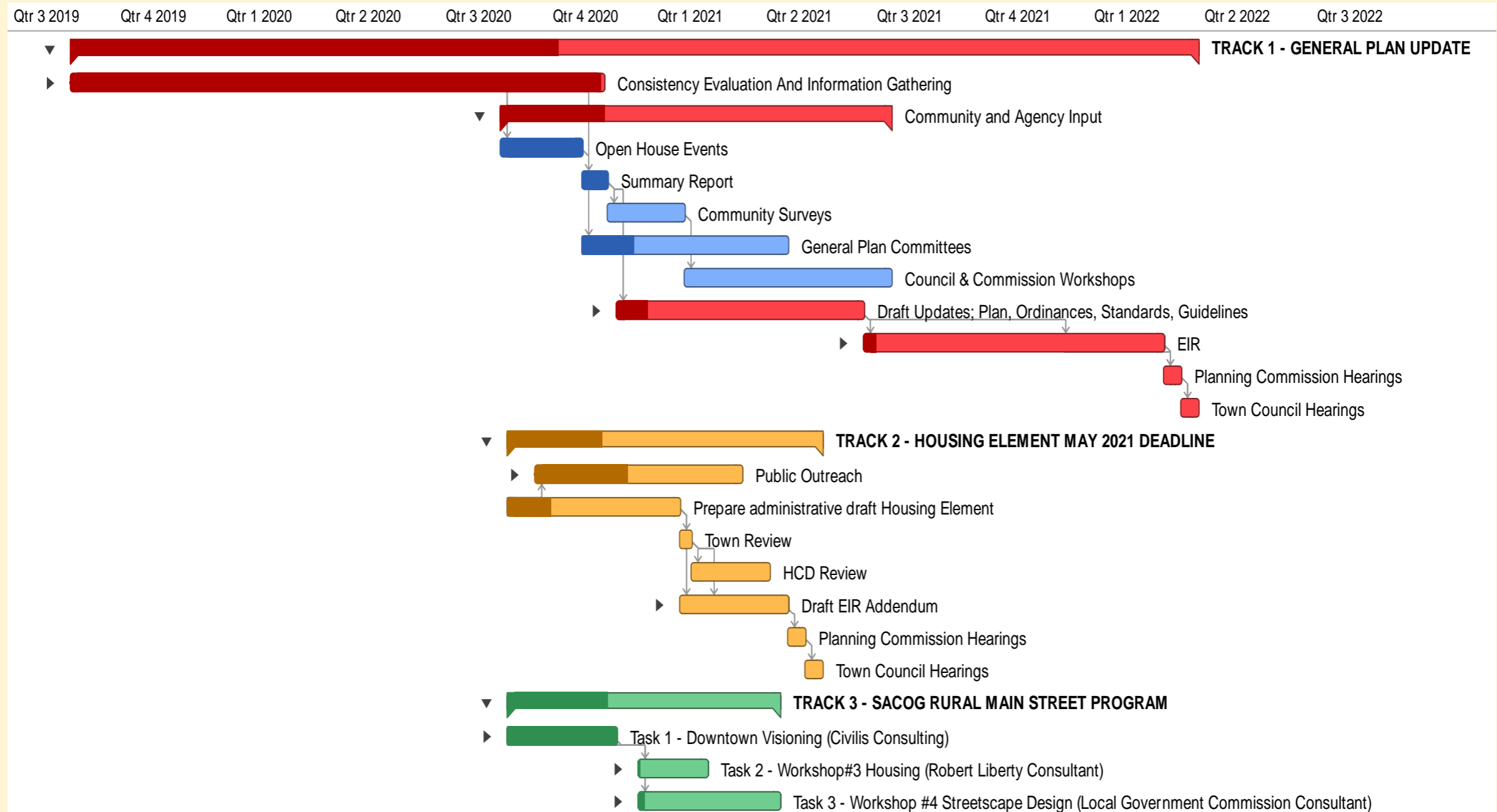
- » Has this policy/program been effective?
- » Should existing policies/programs be strengthened?
- » Is the language clear?
- » Are there issues not addressed that should be?
- » Is the content no longer relevant?
- » What policy updates are required as a result of recent State law?



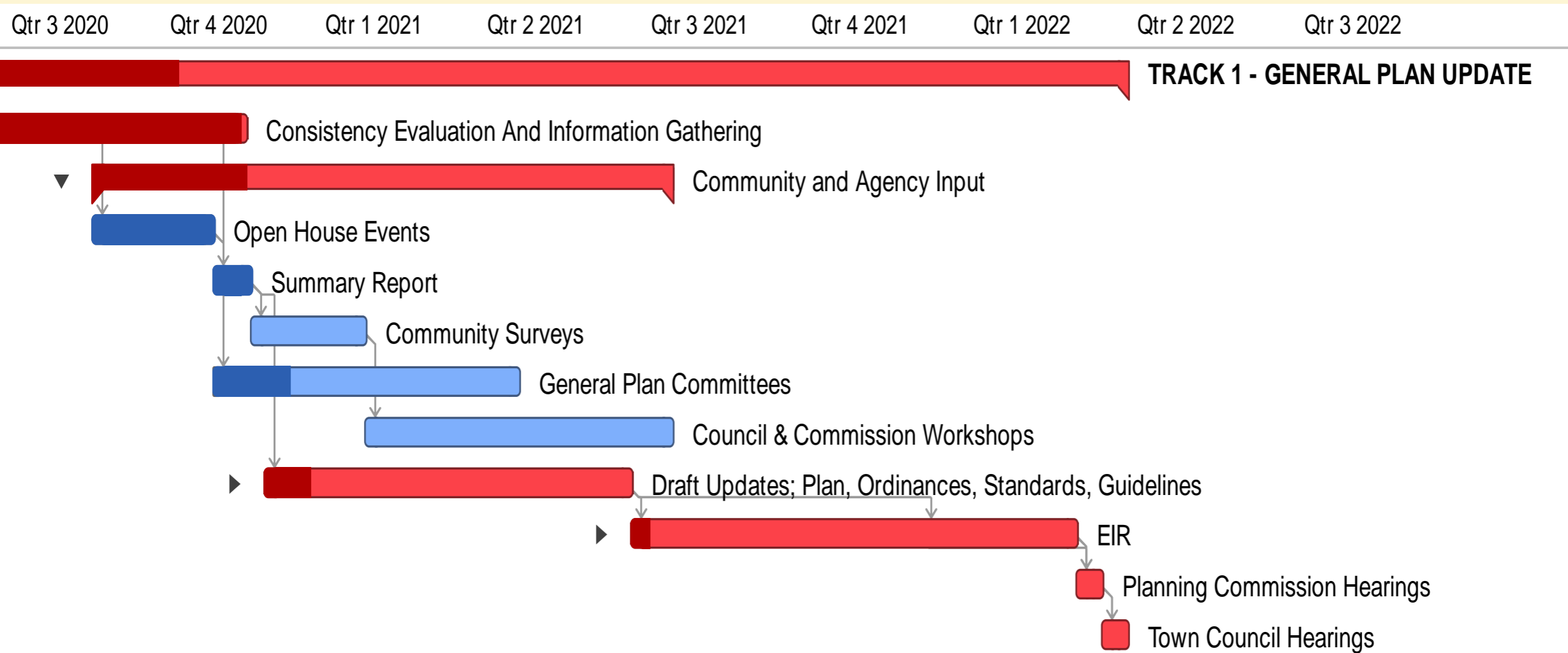
SCHEDULE



PROJECT SCHEDULE



PROJECT SCHEDULE



NEXT STEPS

» Review the Setting

- <https://loomis.ca.gov/2020-general-plan-update/>

» Review the existing Element

- Identify key issues and important trends
- Pose questions related to the existing General Plan content
- Suggest topics where revisions would be appropriate

» Identify key issues for Loomis for this General Plan Update

» Submit comments

- GPUUpdate@loomis.ca.gov

» Next Conservation of Resources Committee Meeting:

- April 28th at 7 PM.



QUESTIONS?

MARY BETH VAN VOORHIS, TOWN OF LOOMIS

mvanvoorhis@loomis.ca.gov

CHRISTY CONSOLINI, HAUGE BRUECK ASSOCIATES

cconsolini@haugebrueck.com

MATTHEW GERKEN, AECOM

matthew.gerken@aecom.com

DAVID BISE, HELIX

davidb@helixepi.com

MELINDA PEAK, PEAK AND ASSOCIATES

peakinc@sbcglobal.net



DISCUSSION



DISCUSSION

Any questions regarding required scope of the goals, policies, objectives, and feasible implementation measures ?

What are your biggest concerns related to natural and cultural resources in Loomis?

What new and emerging conditions do you consider most relevant?

What can the Town do to improve the natural environment, protect resources, and reduced air pollutant and GHG emissions?

How can the Element goals, policies, and programs be revised to better work in tandem

