
TOWN OF LOOMIS GENERAL PLAN PUBLIC SERVICES AND FACILITIES ELEMENT

PUBLIC SERVICES AND FACILITIES COMMITTEE MEETING #1 MARCH 17, 2021



AGENDA

- » **Introductions and Available Documents**
- » **Public Services and Facilities Element Overview**
- » **Setting Review**
- » **Approach to the General Plan Update**
- » **Schedule**
- » **Discussion**



INTRODUCTIONS AND AVAILABLE DOCUMENTS



INTRODUCTIONS

- » **Town Staff**
- » **Consultant Staff**
- » **Committee Members**



AVAILABLE DOCUMENTS

» **Setting**

» **General Plan Update**

<https://loomis.ca.gov/2020-general-plan-update/>

» **Exiting Public Services and Facilities Element**

» **Draft Public Services and Facilities Element**



PUBLIC SERVICES AND FACILITIES OVERVIEW



WHAT IS ADDRESSED?

» **Public Services and Utilities Element Addresses:**

» Services

- Town Government
- Law Enforcement
- Fire Protection
- Schools
- Library
- Water Service
- Wastewater Service
- Drainage and Flood Control
- Solid Waste Management



WHAT IS ADDRESSED

» Utilities

- Natural Gas
- Electricity
- Communications

» Service Funding and Local Finance Issues



GENERAL PLAN REQUIREMENTS

- » “Public Services and Utilities” is not a State required or mandated element.
- » Aspects of public services and utilities correspond to other elements:
 - Housing – To be affordable, housing requires the presence of utility infrastructure and capacity.
 - Land Use – Significant public service/utility facilities, such as schools, public parks, and libraries, are identified as a separate land use category (Public/Quasi Public)
 - Safety – Schools and public facilities need to be established outside areas at increased risk of safety hazard
 - Conservation and Open Space – Demand for more capacity or service volume may affect natural resources and their function. The establishment of greenways can facilitate groundwater recharge.
 - Circulation – Sufficient public services available throughout the community can reduce vehicle miles traveled and trips outside the Town.



GENERAL PLAN REQUIREMENTS

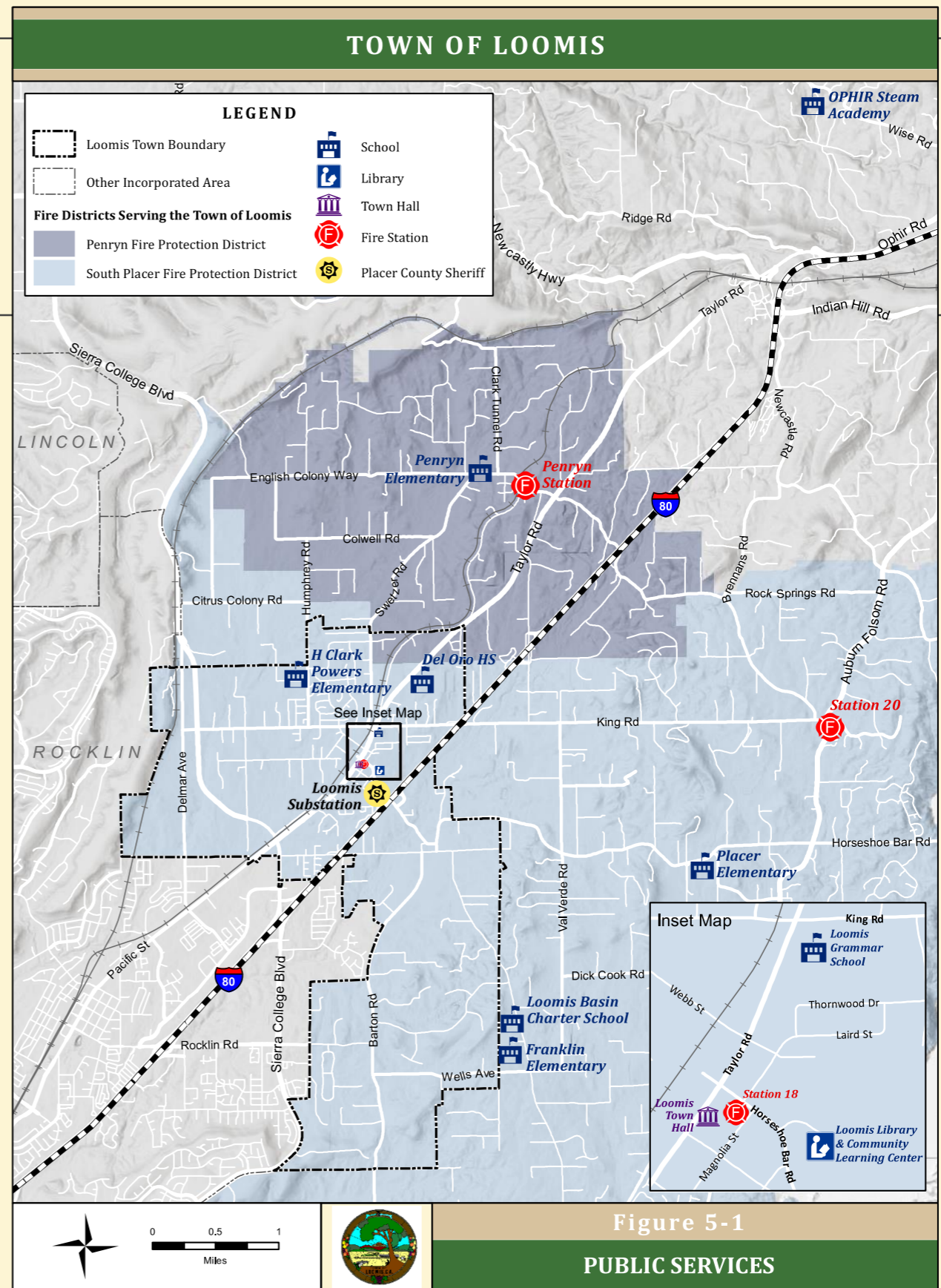
- » General Plans instruct future growth and development, but also help the Town to function efficiently and effectively in the near-term.
 - Identifying existing public service and utility constraints helps the Town to prepare for future changes based on projected growth.
 - The Town can plan for improvements and work with service providers to ensure service levels are maintained.
 - The Town can plan for the fiscal aspects of services.
 - If large developments are proposed to the Town, mechanisms should be in place to ensure those developments provide fair-share funding and have secured utility capacity and infrastructure so that the Town's existing residents and businesses are not adversely affected.



SETTING



PUBLIC SERVICES MAP



SETTING FINDINGS

- » **Law enforcement** – Based on the number of deputies paid for by the Town compared to population(1:1098) , payment for an additional 0.62 deputies is needed to meet the County standard (1:1000). Funding for an additional deputy or detective is needed should larger developments occur in the future.
- » **Fire Protection** – As growth occurs, additional personnel will be needed to adequately serve the area. Should structural height limits allow for taller structures, additional equipment such as ladder trucks will be necessary.
- » **Schools** – The high school and elementary schools operate at capacity. Future growth will result in a need for additional capacity at the schools. Growth in neighboring areas affects capacity.
- » **Library** – The Loomis library operates and is funded through the Town, better serving the Town, but requiring a Town funding source.



SETTING FINDINGS

- » **Water** – Although there are no issues with transmission and distribution, not all areas of Loomis have water service and rely on groundwater. Higher density development must demonstrate adequate supply. Lack of connection in some areas can increase costs for providing new housing and the cost of new service infrastructure is very high.
- » **Wastewater** – Although most of Loomis is connected to wastewater service, some areas rely on septic systems. There is adequate capacity to serve the area, but infrastructure expansion would allow for greater reach of service. Future development in the region may cause capacity constraints and new developments should secure service agreements during the planning process.
- » **Drainage** – Onsite runoff management is critical to reducing overall flood risk. Existing drainages need to be maintained.



SETTING FINDINGS

- » **Solid Waste** – State targets for per capita generation are slightly exceeded in Loomis (6.7 vs. 6.2 pounds per day per person and 11.3 vs. 10.8 pounds per day per employee). Efforts can be made to reduce waste generation.
- » **Gas and Electricity** – Not all Loomis residents have natural gas service, and some rely on individual propane service. As a result of recent disasters and intensive demand in high heat, electrical service has been temporarily shut off during inclement weather at an increasing frequency on a regional basis.
- » **Communications** – There are a number of service providers in the area, with some limits on fiber service, but with a variety of wireless and cable service options. Due to a desire to reach more customers, service providers actively maintain or improve service so that there are no system deficiencies.



APPROACH



PUBLIC SERVICES AND FACILITIES ELEMENT UPDATE APPROACH

» Review the existing goals, policies, and implementation measures

- Keep those that are relevant as written
- Modify those that need minor updates
- Delete those that are complete, not relevant, or non-compliant
- Move and reference those that belong in another Element to reduce duplication.

» Reorganize the goals, policies, and implementation measures with a numbering system.

- #Goal
 - #.#Objective
 - #.#.# Policy
 - #.#.#.#Implementation Measure
- Every goal will have at least one objective, policy, and implementation measure and every objective will have at least one policy and implementation measure.



QUESTIONS TO CONSIDER WHEN REVIEWING POLICIES

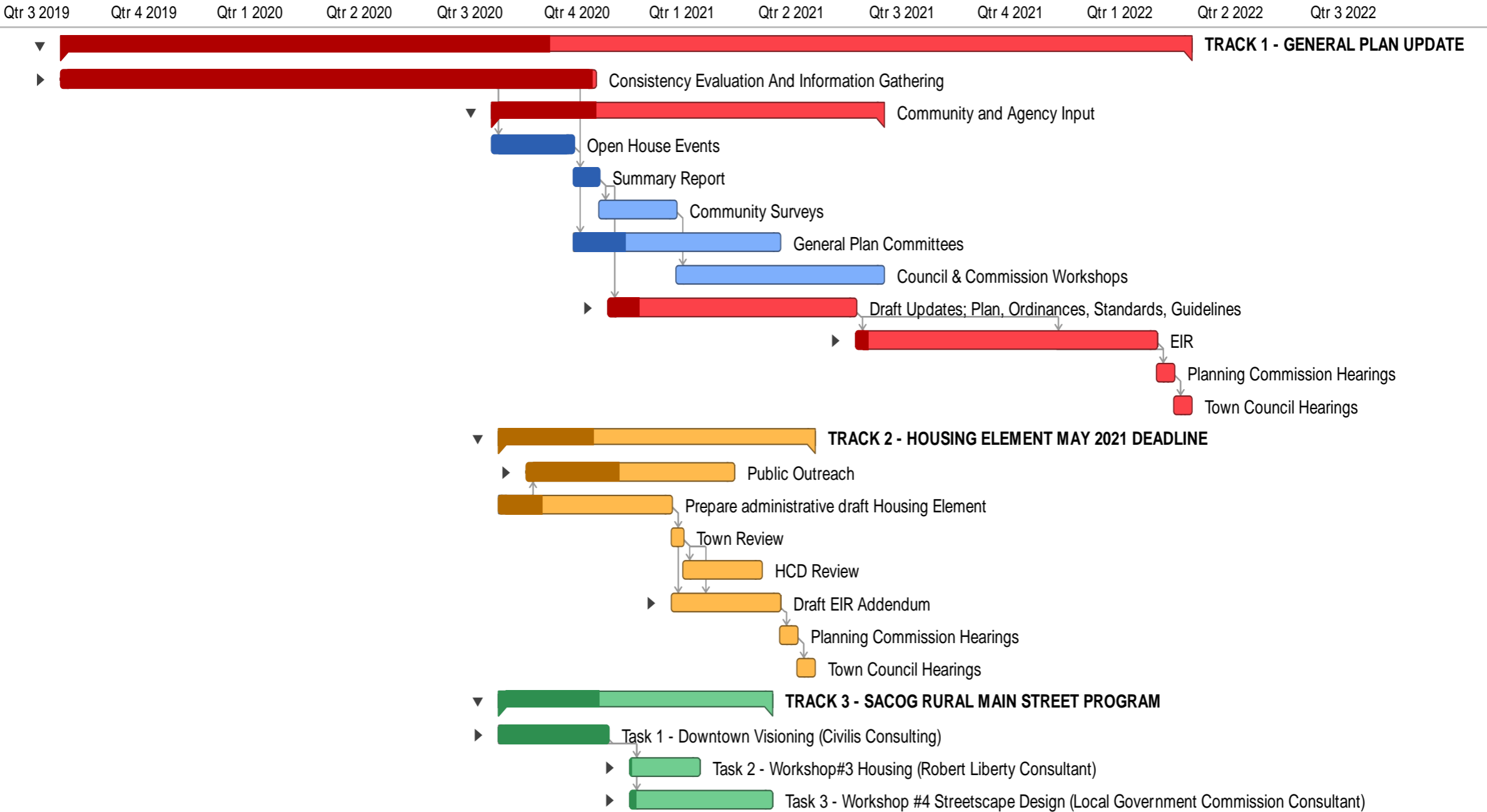
- » Has this policy/program been effective?
- » Does the policy/program address the corresponding goal?
- » Is the text appropriate?
- » Has this been completed or is no longer relevant?
- » Does this belong in another element?
- » How can existing policies/programs be strengthened?
- » Are there issues not addressed by the existing element that should be?
- » Which goals, policies, and implementation measures correspond with one another?



SCHEDULE



PROJECT SCHEDULE



NEXT STEPS

- » **Identify any areas/topics of concern in Loomis.**
- » **Review the Setting to determine if any additional topics should be added or if the data is accurate.**
- » **Review all the General Plan Update documents to gain a better understanding of the existing conditions in Loomis.**
- » **Review the existing Public Services and Facilities Element Goals, Objectives, Policies, and Implementation Measures.**
 - Identify areas that need to be changed or reorganized
- » **Submit comments.**



QUESTIONS?

MARY BETH VAN VOORHIS, TOWN OF LOOMIS

mvanvoorhis@loomis.ca.gov

CHRISTY CONSOLINI, HAUGE BRUECK ASSOCIATES

cconsolini@haugebrueck.com

