

---

**TOWN OF LOOMIS GENERAL PLAN  
HISTORIC/CULTURAL RESOURCES ELEMENT**

---

**HISTORIC/CULTURAL RESOURCES  
COMMITTEE  
MEETING #1  
APRIL 7, 2021**



---

# AGENDA

---

- » **Introductions and Available Documents**
- » **Overview: Historic Setting and the Conservation Element**
- » **Approach to the General Plan Update**
- » **Schedule**
- » **Discussion**



# INTRODUCTIONS AND AVAILABLE DOCUMENTS



---

# INTRODUCTIONS

---

- » **Town Staff**
- » **Committee Members**



---

# AVAILABLE DOCUMENTS

---

» **Setting**

» **General Plan Update**

<https://loomis.ca.gov/2020-general-plan-update/>

» **Existing Archaeological Resources, Parks & Recreation Setting**

» **Draft Cultural and Historic Resources Setting**



# CULTURAL AND HISTORIC RESOURCES OVERVIEW



---

# CULTURAL AND HISTORIC RESOURCES OVERVIEW

---

## » Types of Resources

- PREHISTORIC PERIOD—Native American village sites, camp sites, special use sites, food processing sites, rock art, isolated artifacts
- HISTORIC PERIOD—Buildings, structures, building complexes, roads, railroad line, cemeteries, trash deposits, mining features, ditches and canals



---

# REGULATORY CONTEXT

---

- » **Federal laws are applicable when the project involves federal lands, a federal action such as a permit, or receives federal funding. Federal laws include:**
- » Antiquities Act (1906)
- » National Historic Preservation Act (1966)
- » American Indian Religious Freedom Act (1978)
- » Archeological Resources Protection Act (1979)
- » Native American Graves and Repatriation Act (1990)

The most likely time for this to occur would be when a project area contains wetlands, and a permit is required from the US Army Corps of Engineers.





---

# REGULATORY CONTEXT

---

## » **State Laws**

- » CEQA—requires lead agencies to determine if a project will have a significant effect on significant cultural resources. These include resources eligible for or listed in the California Register of Historical Resources. An effect would be considered a significant environmental effect. Avoidance and protection of resources is preferable; if not possible, other means need to be considered.
- » CA Health and Safety Code—procedures should human remains be found
- » (Government to government)
- » Senate Bill 18 (2004) Allows Native American consultation early in planning.
- » Assembly Bill 52 (2014) Establishes formal consultation process for Native American groups.
- » The Town has initiated this process.



---

# REGULATORY CONTEXT

---

## » **Local**

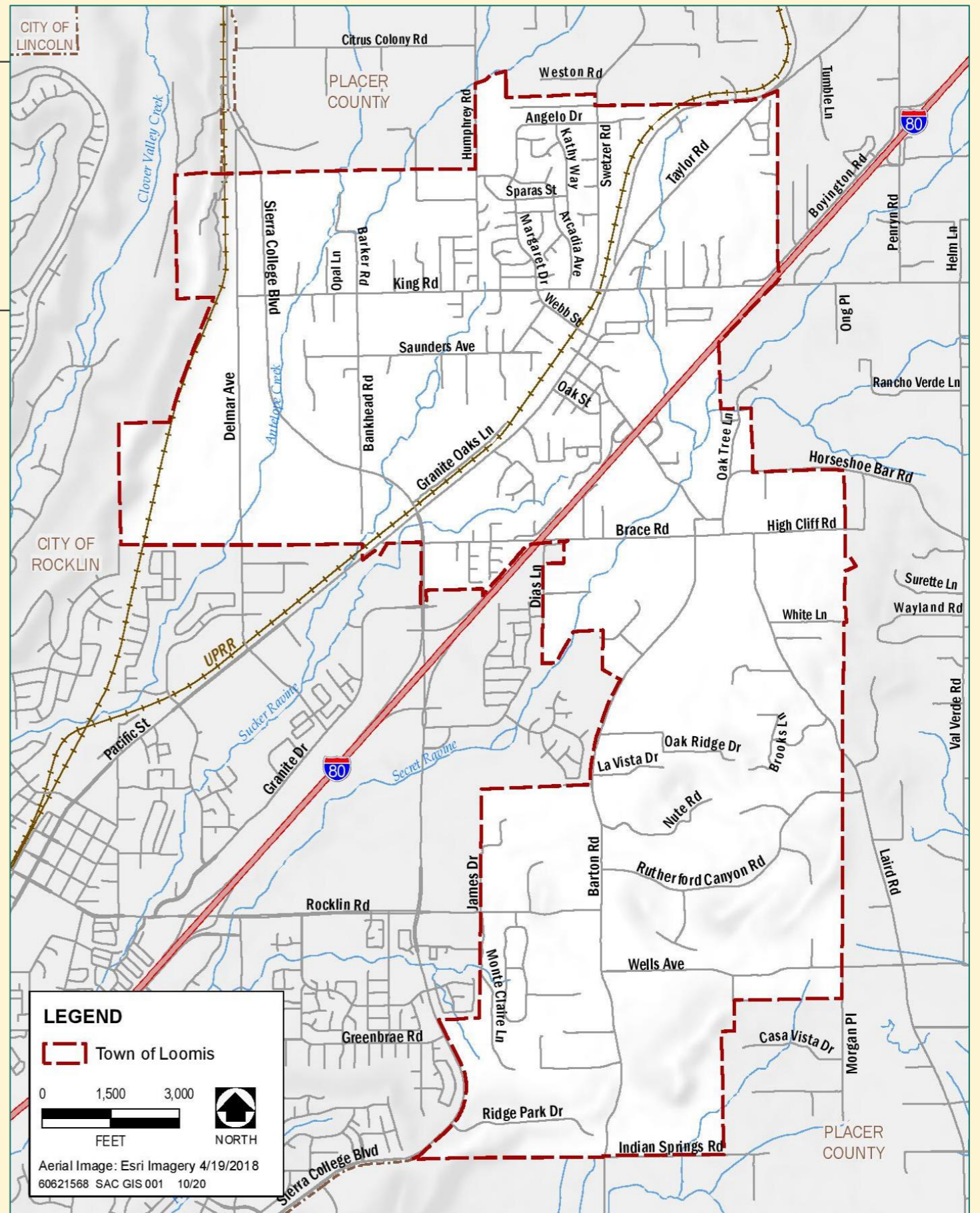
- » The Town of Loomis General Plan goals and policies can be found in the Conservation of Resources Element (Chapter VII).
- » The Town's goals are to preserve and replicate historic areas of the Town that contribute to the Town's distinctive character and to encourage cultural facilities and events.
- » Policies address historic building revitalization and restoration, expansion of cultural facilities and programs and protection of archaeological sites.



# SETTING



# TOWN OF LOOMIS MAP



---

# WHAT IS ADDRESSED?

---

## ➤ **Cultural and Historic Resources Setting addresses:**

- Regulatory setting:
  - Federal, State, and local laws.
- Background data:
  - Prehistory, ethnography, and history
- Resources within Loomis:
  - Any site that may have historical, architectural, archaeological, cultural, or scientific importance.
- Consultation with area Native American Tribes
- Paleontology



---

# SETTING FINDINGS

---

- » **Ethnology**—At the time of contact, Loomis is in Nisenan territory, with major villages along the large rivers. Seasonal movement for resources acquisition led to the establishment of camps and other use areas, such as milling stations for food processing.
- » **History**—Early forays into the region have not been noted for the early explorers. The January 1848 discovery of gold brought thousands to California seeking their fortunes. Secret Ravine was extensively worked for placer gold. The location of Loomis led to the development of the region as a transportation hub, and early small communities grew up to provide services for the incoming miners.
  - Early communities' names include Pine Grove House, Pino, Secret Ravine, Placer and Smithville.



---

# SETTING FINDINGS

---

- Early agriculture involved livestock grazing, with the ranchers practicing transhumance, necessary in a dry setting, and production of dry land grain. The development of better water distribution systems led to more intensive forms of agriculture. At the same time, the completion of the transcontinental railroad as far as Pino Station provided a wider marketplace for local produce.
- Quarrying granite was also facilitated in the region, with the rail available for hauling the heavy product of this industry.
- Mining continued in the region until the 1930s, but agriculture dominated. Land was subdivided into ten-acre tracts. Fruit packing became important with the location of the town able to ship to markets both east and west. There were six fruit-packing businesses in town by 1913.
- The town suffered a huge setback with a fire in July 1915 destroying much of downtown, but fortunately only one of the packing houses was affected. Residential buildings were not affected.



---

# SETTING FINDINGS: RECORDED RESOURCES

---

- A record search has been completed for the General Plan Area through the North Central Information Center, and a total of 65 resources have been recorded for the town.
  - Eight sites or isolated artifacts were reported be of the prehistoric period, ranging from a single artifact to bedrock milling features to rock art. Since status is not reported for sites after the initial survey, we cannot state whether any of the sites still exist.
  - Two sites were reported to have both historic and prehistoric elements.
  - The remaining 55 sites include rock wall, mining features, water conveyance features, refuse scatters, residences, railroad features and commercial buildings.
  - A total of four properties are included in the Built Environment Resources Directory (BERD) which contains files that provide information, organized by county, regarding non-archaeological resources in the Office of Historic Preservation's (OHP) inventory.





# GENERAL PLAN UPDATE APPROACH



---

# CULTURAL AND HISTORIC RESOURCES APPROACH

---

## » Review the existing goals and policies

- Keep those that are relevant as written
- Modify those that need minor updates
- Delete those that are complete, not relevant, or non-compliant
- Move and reference those that belong in another Element to reduce duplication.
- Add goals, objectives, policies, and implementation measures where needed

## » Reorganize the goals, policies, and implementation measures with a numbering system.

- #Goal
  - #.#Objective
    - #.#.# Policy
      - #.#.#.# Implementation Measure
- Every goal will have at least one objective, policy, and implementation measure and every objective will have at least one policy and implementation measure.



---

# QUESTIONS TO CONSIDER WHEN REVIEWING POLICIES

---

- » Has this policy been effective?
- » Does the policy address the corresponding goal?
- » Is the text appropriate?
- » Has this been completed or is no longer relevant?
- » Does this belong in another element?
- » How can existing policies be strengthened?
- » Are there issues not addressed by the existing goals and policies that should be?



---

# EXISTING GOALS AND POLICIES

---

## Existing Goals

1. To preserve and where appropriate replicate historic areas, such as the downtown district and fruit sheds, that contribute to Loomis' distinct character.
2. To encourage cultural facilities and events in town, such as live theater and music programs. (revise/replace?)



---

# EXISTING GOALS AND POLICIES

---

## Existing Policies

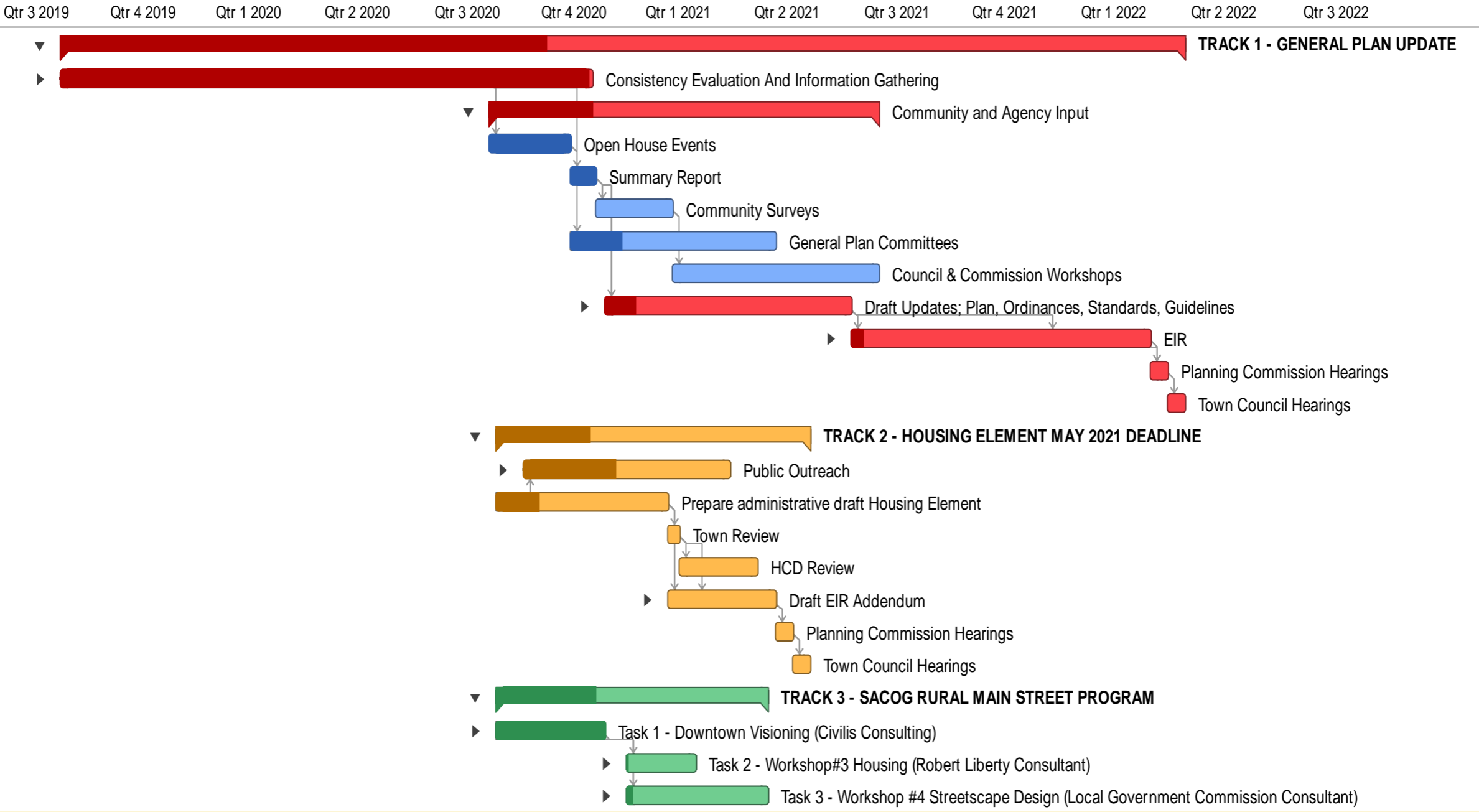
1. Loomis shall encourage the reuse and revitalization of historic buildings. Whenever possible, flexibility in development standards allowed by the Historic Building Code shall be offered to developers working with historic properties.
2. The demolition of buildings deemed by the Town to be historically or aesthetically valuable shall be prohibited in cases where alternatives for reuse are found to be feasible.
3. Loomis shall support the expansion and development of cultural facilities and programs, as a draw for visitors and residents to the downtown core.
4. When feasible, and on public property, Loomis shall prohibit recreational activities that could damage or destroy archaeological sites in areas where archaeological sites have been identified.
5. As part of the environmental review process, the Town shall review all development proposals for their potential to disturb cultural resources. In areas where cultural resources are known to occur, give special consideration to development of facilities that enhance the operation, enjoyment, and maintenance of these areas.



# SCHEDULE



# PROJECT SCHEDULE



---

# NEXT STEPS

---

- » **Identify any areas/topics of concern in Loomis.**
- » **Review the Setting to determine if any additional topics should be added or if the data is accurate.**
- » **Review all the General Plan Update documents to gain a better understanding of the existing conditions in Loomis.**
- » **Review the existing Goals, Objectives, Policies, and Implementation Measures.**
  - Identify areas that need to be changed or reorganized
  - Suggest text changes or new goals, objectives, policies, and implementation measures
- » **Submit comments.**





# QUESTIONS?

MARY BETH VAN VOORHIS, TOWN OF LOOMIS

CHRISTY CONSOLINI, HAUGE BRUECK ASSOCIATES

MELINDA PEAK, PEAK & ASSOCIATES

PLEASE SUBMIT COMMENTS TO: [GPUPDATE@LOOMIS.CA.GOV](mailto:GPUPDATE@LOOMIS.CA.GOV)

