



Staff Report

March 12, 2019

TO: Honorable Mayor and Members of the Town Council
FROM: Mary Beth Van Voorhis, Planning Director
DATE: March 12, 2019
RE: On-Call Planning Services Contract

Recommendation

Adopt resolution #19-__ awarding an On-Call and As-Needed Planning Services Contract to Hauge Brueck Associates and authorize the Town Manager to execute an agreement acceptable to the Town for providing such On-Call and As-Needed Planning Services. On-Call Planning and Environmental services will be billed on an hourly basis and will not exceed \$75,000 for special projects (General Plan and Zoning Code Updates) for 2019-2023. Applicant Reimbursable projects will also be billed on an hourly basis and evaluated separately when specific projects are identified.

Issue Statement and Discussion

The Planning Department anticipates the need for On-Call and As-Needed Planning services over the next year to provide additional staff support as the Town begins updating the General Plan, Zoning Code, Environmental Review, and as-needed on Applicant Reimbursable projects.

This on-call contract will allow the Town Manager and Planning Department to identify tasks and projects in a timely manner. Having a planning consultant under contract will allow the Town to continue to focus on grant opportunities which will supplement the Town's out-of-pocket expenses related to the General Plan/Zoning code update and facilitate new larger scale projects in a timely manner.

The Planning Department released a Request for Proposals in January 2019. Two consulting firms submitted proposals. Town staff reviewed, evaluated and ranked the submittals and after discussing the results, concurred on the recommendation of Hauge Brueck Associates as the top candidate to meet the Town's needs based on familiarity with the Town of Loomis, their continued work on the current Costco project, established local base, depth of firm and staff, long term client base, and their established relationships with outside consultants the Town of Loomis already engages with.

As proposed, the on-call contract would not exceed \$75,000 (billed at their current hourly rates / reduced by 6%) for 2019-2023, however, will be totally driven by the Town Manager and Planning Department based on the specific needs of the Town of Loomis.

CEQA Requirements

None.

Financial and/or Policy Implications

Funding for this contract will be from grant funds received or reimbursed by applicant specific projects. This contract does not require a budget amendment as there are adequate funds in the budget to accommodate these expenditures.

Attachments

- A. Resolution
- B. Hauge Brueck Associates, On-Call Planning Services Proposal 2019-2023I

TOWN OF LOOMIS

RESOLUTION NO. 19 – __

**A RESOLUTION OF THE TOWN COUNCIL OF THE TOWN OF LOOMIS
AWARDING AN ON-CALL AND AS-NEEDED PLANNING SERVICES CONTRACT 2019 – 2023 TO
HAUGE BRUECK ASSOCIATES AND
AUTHORIZE THE TOWN MANAGER TO EXECUTE AN AGREEMENT ACCEPTABLE TO THE
TOWN FOR PROVIDING SUCH SERVICES.**

WHEREAS, the Town of Loomis, anticipates the need for additional Planning Department support on-call services during 2019 – 2023 for upcoming General Plan and Zoning Updates; and

WHEREAS, current and forecasted Planning related projects in Loomis are and will remain below the level justifying the creation and hiring of a full-time employee with additional costs to the Town for benefits and pension; and

WHEREAS, a consulting firm would provide a multitude of additional services that could include interpretation of plans and regulations, General Plan and Zoning consistency updates, Environmental documents, land use planning, plan review, and other duties as needed; and

WHEREAS, two proposals were received and reviewed for consistency with the Request for Proposals (RFP) and the needs of the Town of Loomis to provide On-Call and Applicant Reimbursable services.

NOW, THEREFORE, IT IS HEREBY RESOLVED that the Town Council of the Town of Loomis accepts the proposal of Hauge Brueck Associates and hereby authorizes the Town Manager to execute agreements acceptable to the Town for on-call and as-needed planning services.

PASSED AND ADOPTED this 12th day of March 2019, by the following roll call vote:

AYES:
NOES:
ABSENT:
ABSTAINED:

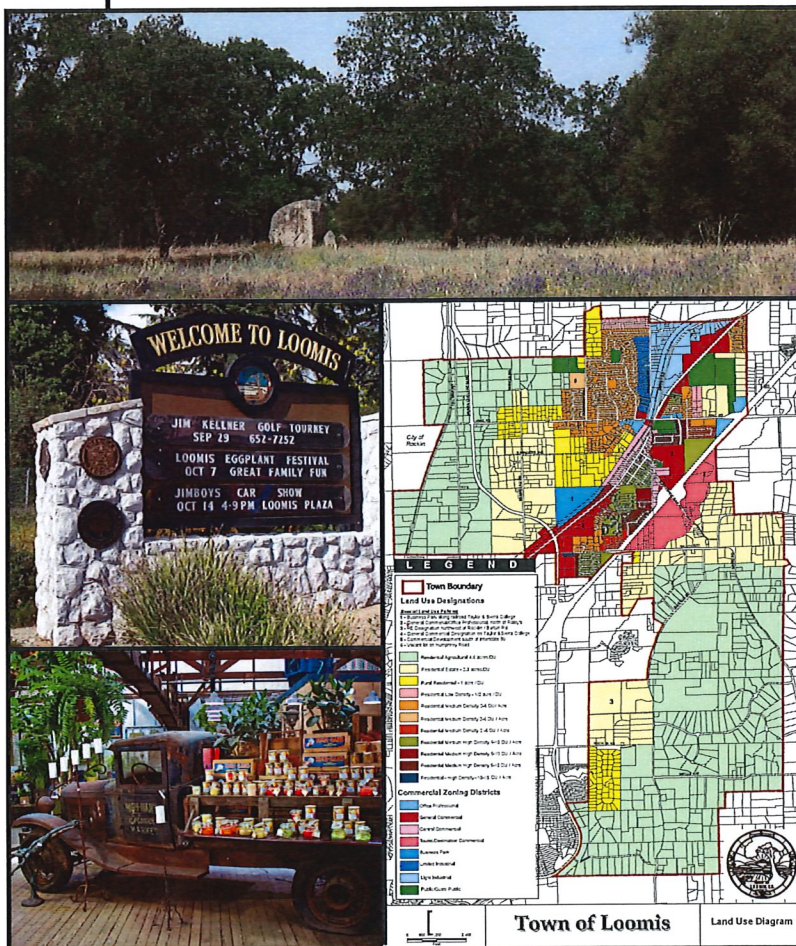
Tim Onderko, Mayor

ATTEST:

Charleen Strock, Town Clerk

Proposal for

**Town of Loomis Planning Department
On-Call Planning Services
For the Years 2019-2023**



Presented to

The Town of Loomis

February 28, 2019

**HAUGE BRUECK
ASSOCIATES**

HAUGE BRUECK February 28, 2019
ASSOCIATES

www.haugebrueck.com

SACRAMENTO

P 916-283-5800
F 916-273-4054
2233 Watt Avenue, Suite 300
Sacramento, CA 95825

Town of Loomis
3665 Taylor Road
Loomis, CA 95650

MEADOW VISTA

P 530-878-1909
2460 Walgra Meadows Circle
Meadow Vista, CA 95722

Attn: Mary Beth Van Voorhis, Planning Director

LAKE TAHOE

P 775-588-4700
901 Merced Avenue
South Lake Tahoe, CA 96150

RE: Proposal to Provide On-call Planning Staff Services

On behalf of Hauge Brueck Associates (HBA), I am pleased to submit our Proposal to provide On-call Planning Staff Services to the Town of Loomis for the years 2019-2023.

HBA's relevant qualifications and experience for providing On-call Planning Staff services are provided in the attached proposal and demonstrated by our existing on-call planning service contracts with the City of Sutter Creek, and our Costco Project processing services for the Town of Loomis. For these clients we review projects for General Plan and Zoning consistency, conduct site visits, work with Town/City staff to process and review applications and agencies and other jurisdictions to reach project consensus, review projects for compliance with regulations and policies, process conditional use permits and subdivision maps, prepare staff reports, prepare resolutions, prepare findings, prepare initial studies, conduct CEQA to develop Negative Declarations, Mitigated Negative Declarations, and Environmental Impact Reports, conduct NEPA analysis to develop Environmental Assessments and Environmental Impact Statements, make presentations at public meetings, and conduct public outreach.

It is our understanding that on-call services will include: providing planning staff support, such as application review for completeness, compliance with Town planning documents and regulations, and feasibility; data analysis and provision of advice and guidance regarding planning and site development; CEQA review and analysis; assistance with the Town's general plan update; site visits; meeting with developers, applicants, agencies, neighboring jurisdictions, and other Town staff; attendance at public hearings and community meetings; meeting presentation and facilitation; facilitation of major projects; and production of staff reports, resolutions, ordinances, conditions of approval, and other documentation and decision-making tools.

I will serve as the Planner supported by Christy Consolini and Rob Brueck. My contact information is:

2233 Watt Avenue, Suite 300
Sacramento, CA 95825
ahauge@haugebrueck.com

Main: (916) 283-5800 ext. 101
Direct: (530) 762-1641
Cell: (916) 307-7654

I work three to four days from my office in Meadow Vista allowing a quick commute to the Town office in Loomis.

We appreciate your consideration of HBA for this position and look forward to the opportunity to work with the Town of Loomis.

Sincerely,

A handwritten signature in blue ink, appearing to read "Anders Hauge". The signature is fluid and cursive, with a long horizontal stroke extending to the right.

Anders J. Hauge
Hauge Brueck Associates, LLC

PROPOSAL CONTENTS

Section	Page
1 COMPANY PROFILE	1
2 ORGANIZATION AND STAFFING	3
3 APPROACH	7
4 SUBCONTRACTORS	13
5 COST PROPOSAL	29
6 RESUMES, PROJECTS, AND REFERENCES	36
7 CONFLICT OF INTEREST	44
8 ANTICIPATED POTENTIAL PROBLEMS	44
A ATTACHMENT A: HBA RESUMES	45

1 COMPANY PROFILE

HBA is a multidisciplinary planning and environmental firm that provides services related to planning, environmental impact assessment, and permitting through its staff and project-specific subcontractor teams. HBA is a limited liability company formed in 2006, and at present, includes two partners, Anders Hauge and Rob Brueck, and three part-time/casual hourly employees. Prior to forming HBA, Anders Hauge and Rob Brueck developed the California/Nevada environmental practice for the Parsons Corporation, opening the Sacramento, CA office in 1989 and managing the office through our amicable departure from the corporation in 2006. HBA maintains offices in Sacramento, South Lake Tahoe, And Meadow Vista, California at the following locations:

Sacramento (Main Office)
2233 Watt Ave., Suite 300
Sacramento, CA 95825

Meadow Vista
2460 Walgra Meadows Circle
Meadow Vista, CA 95722

South Lake Tahoe
901 Merced Avenue
South Lake Tahoe, CA 96150

HBA's manager and key point of contact for the proposed work, Anders Hauge, has over 45 years of experience working with public agencies to develop and implement management policies that meet legal mandates and preclude significant environmental impacts. Anders is adept at organizing appropriate multidisciplinary teams, setting clear goals and standards, coordinating technical evaluations, addressing contentious environmental issues with agency staff members and public groups, developing feasible mitigation measures or modifications to proposed plans, and preparing clear and concise environmental documents and other reports.

HBA specializes in the management and preparation of environmental and planning documents for public and private clients. HBA prepares project- and program-level environmental documents in compliance with the California Environmental Quality Act (CEQA), National Environmental Policy Act (NEPA), and Tahoe Regional Planning Agency (TRPA) Rules of Procedure.

HBA has extensive experience supporting the planning staff and providing for the planning needs of various counties, cities, and towns. This includes working closely with staff from the planning department, as well as other departments, agencies, neighboring jurisdictions, and citizen groups; meeting with developers, applicants, and representatives to review development proposals; review of applications for consistency with regulations, permit requirements, and other planning documents, as well as environmental constraints and concerns; and managing and working with staff on multiple projects of various sizes within brief timeframes.

HBA manages both small and large projects, utilizing project management tools (scope, budget and schedule), applied appropriately for each project. HBA facilitates agency and public outreach to achieve consent among stakeholders to allow the process to reach its conclusion. This expertise also extends to public hearings in which HBA has prepared and provided presentations, meeting materials, staff reports, resolutions, and other materials for successful meetings that track concerns, discuss and reach consensus on issues, and allow decision-makers to reach conclusions.

HBA's associates provide technical background in land use, socioeconomic, scenic resources, biological resources, wetlands, air quality, climate change, public service infrastructure, water quality, hydrology and soils. HBA has expertise in conducting public outreach with demonstrated success in achieving consent on solutions for small and large projects.

HBA addresses the range of technical and political issues encountered with a focus on:

- Using quantified, accurate and objective data for analysis
- Developing effective and feasible implementation strategies
- Developing monitoring programs that objectively demonstrate success or failure of strategies
- Adherence to Quality Assurance and Quality Control procedures.

HBA works with our clients to resolve issues, develop creative and workable solutions, to be flexible in meeting the changing needs of a project. This is demonstrated through the principals ongoing contractual relationship with key clients for over 30 years.

2 ORGANIZATION AND STAFFING

HBA's staff and their assignments, qualifications, and experience are described below. Subcontractors who may be utilized to provide support services under the HBA team, when needed, are listed in Section 4.

Anders J. Hauge, HBA Partner, Manager of On-Call Services

Anders Hauge, Senior Planner, QA/QC. Anders has 48 years of experience (13 years as co-founder of HBA) in developing, managing, and implementing environmental documents; building partnerships and consensus; and developing general plans, design standards, and land use regulations. He has worked in the Lake Tahoe Basin and in the Sierra for more than 40 years, both as a public agency planner for the California Tahoe Regional Planning Agency and as a planning consultant. Anders has successfully completed over 50 environmental documents within California and Nevada. Anders received his B.S. in city and regional planning from California State Polytechnic University, San Luis Obispo in 1971.

Anders' experience in providing on-call staff services and experience as planning staff includes:

- City of Sutter Creek On-Call Planning Services,
- City of Sutter Creek Applicant Reimbursable Services,
- Tulare County On-Call Planning and Environmental Services,
- South Tahoe Public Utility District Environmental Services,
- Southern Nevada Water Authority Planning and Environmental Services,
- City of Ridgecrest, Planning Director
- City of Winters, California, Planning Director

Mr. Hauge is experienced in public facilitation programs including the Environmental manager for the City of Redwood City's Saltworks Project, Mariposa County General Plan, City of San Joaquin General Plan, City of Sutter Creek projects, South Tahoe PUD projects, Heavenly Ski Resort projects, and Bureau of Reclamation/Southern Nevada Water Authority Facilities Expansion EIS. He is currently providing staff processing services for the Loomis Costco Project which involves weekly meeting facilitation with the project processing team and applicant, review of applicant submittals, interagency coordination, scheduling, preparation of staff reports, findings, resolutions, and General Plan and zoning amendments, review of environmental compliance materials, and many other tasks. He provides on-call staff services to the City of Sutter Creek, including meeting facilitation with the City Council, Planning Commission, project applicants, the public, and various agencies, close coordination with the City Manager and other City departments, update of the City's General Plan, project review, and CEQA compliance, among various other tasks.

Robert Brueck, HBA Partner, Planner, CEQA Analyst, and Quality Control

Robert Brueck, Planner, QA/QC. Robert Brueck specializes in the management and preparation of environmental and planning documents for public and private clients. Specific environmental documentation experience has included documents prepared for the California Environmental Quality Act (CEQA), National Environmental Policy Act (NEPA), Tahoe Regional Planning Agency (TRPA), and state and federal permitting. Specific planning experience has included Master Plans, Annexations, Zone Changes, and General Plan Amendments. Mr. Brueck has performed many of his assignments in the western United States, including Lake Tahoe, and has a broad knowledge of the various rules and regulations that govern development within this heavily regulated area.

Rob's expertise includes coordinating interdisciplinary team efforts with client needs and expectations; organizing and conducting public and agency dialogue; carrying out a wide variety of natural resource analyses; refining and integrating work products from interdisciplinary team members; assuring compliance with myriad environmental laws and regulations; and producing highly readable, graphically effective, and legally adequate project reports and environmental compliance documents.

Specific technical abilities include recreation and land use analysis and scenic assessment. Rob's recent experience includes the management of environmental documentation for the Lake Tahoe Community College (Facilities Master Plan EIR), TRPA and Placer County (Homewood Ski Area Master Plan EIR/EIS and Dollar Creek Shared Use Trail IS/IEC), TRPA and the USDA Forest Service, LTBMU (Heavenly Mountain Resort Master Plan EIR/EIS/EIS), TRPA and El Dorado County (Meyers Area Plan IS/IEC), and the TRPA and Tahoe Resource Conservation District (Lake-Wide Aquatic Invasive Plant Control Plan IS/IEC).

Christy Consolini, HBA Senior Planner, Assistant Planner/CEQA Analyst

Christy Consolini, Assistant Planner and CEQA Analyst. Christy is an environmental planner and manager with over 20 years of professional experience (11 years with HBA) involving environmental analysis, regulatory compliance, urban planning, and project management. Christy is a project manager responsible for the preparation and oversight of CEQA, NEPA, and TRPA environmental documents that have included initial studies, categorical exemptions/exclusions, environmental assessments, mitigated negative declarations, and environmental impact reports/statements prepared for residential, commercial, mixed use, industrial, transportation, solid waste, and public works projects. Her experience includes permitting, construction specifications, environmental training workshops, scoping workshops, and meeting presentations. She also provides on-call staff services and planning assistance. Christy's work focuses on land use, visual and scenic resources, recreation, population and housing, socioeconomics, public services and utilities, project compliance, document review, analysis criteria development and preparation of outreach materials. Christy received her B.A. in Environmental Studies (Policy and Planning emphasis) from the University of California, Santa Cruz in 1998. She has also received certification under the US Department of Labor OSHA 10-hour Construction Safety and Health Certification (#001996223).

Christy has experience in providing on-call staff services, including application consistency and compliance reviews, environmental reviews and analysis, agency and staff coordination, permitting, meeting presentations, and preparation of staff reports, findings, resolutions, ordinances, and conditions of approval. Christy provides Town staff services on the Loomis Costco Project and has conducted application review, environmental documentation review, Town Council staff presentations, weekly coordination with the processing team, reviewed lot-line adjustments, and is preparing staff reports, resolutions, conditions of approval, and various other documentation to process the project application. She currently provides on-call staff services for the City of Sutter Creek, including the City's General Plan Update and preparation of the General Plan Update IS/MND, individual project compliance review, meeting attendance, inter-agency coordination, preparation of staff reports and resolutions, and various other on-call tasks. Other recent projects include the Loomis Costco Project (project processing services); Tourist Core Area Plan Update in South Lake Tahoe; Tahoe South Event Center Project; Bollinger Valley Project EIR; SPMUD Loomis Diversion Pipeline IS/MND and construction-phase environmental management and permitting; Lake Tahoe Community College EIR/EIS and other CEQA/TRPA documentation; and the Meyers Area Plan TRPA/CEQA documentation.

Jen DeMartino, GIS/Mapping Specialist

GIS/Mapping. Jennifer is a GIS specialist with over 18 years of experience (9 years collaborating with HBA) preparing high-quality cartography and map production, data analysis, and data development. She provides GIS services for a wide variety of projects, including general plan updates, housing availability studies, wetland delineations, environmental impact reports/statements, regional transportation plans and circulation elements, biological surveys, feasibility studies and more. Jennifer received her B.A. in geography from California State University Northridge in 1997 and her M.A. in geography from California State University Northridge in 2001.

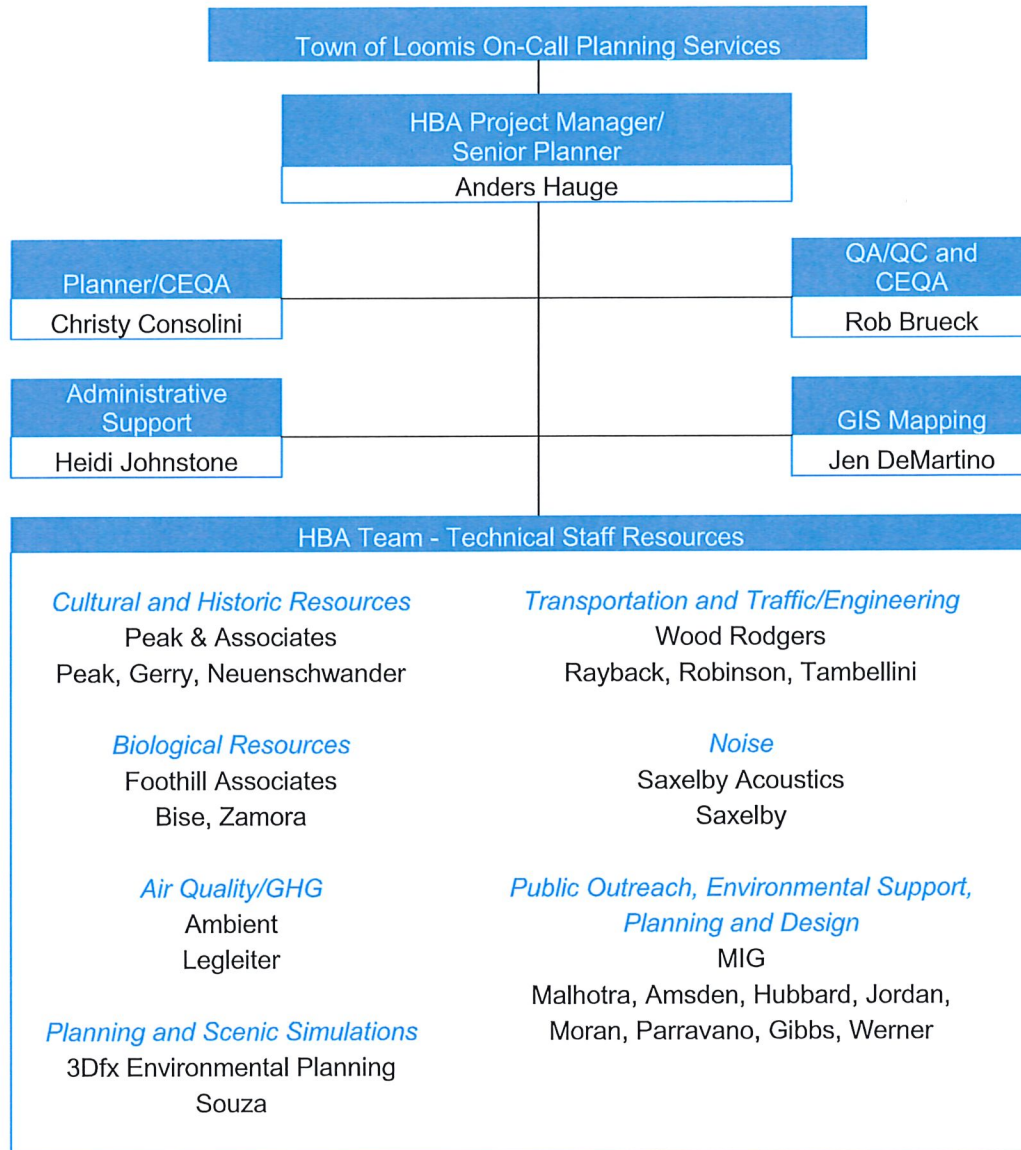
Recent projects include GIS services for the City of Sutter Creek General Plan Update for which the existing paper and parcel mapping were digitized, the Tahoe Core Area Plan Amendment land use map, biological resource mapping for the SPMUD Loomis Diversion Line Project, and various types of resource mapping for the Bollinger Valley Project EIR.

Heidi Johnstone, Administrative Support

Heidi Johnstone is a business professional responsible for supporting management in the preparation of environmental and planning documents for public and private clients, as well as invoicing and accounting. Ms. Johnstone specializes in website design and management. She has a B.S. in Communications with an emphasis in Public Relations from San Diego State University. She has been with HBA since 2006 and has over 17 years of experience.

She has designed a company logo and informational medical diagrams for a website and print. Ms. Johnstone has created newsletters, signage, brochures, banners, posters, and postcards for public outreach open houses on various projects. She created a website specifically designed to keep the public updated on the City of Sutter Creek Gold Rush Ranch project, and helped maintain websites for the California Avocado Commission, San Diego Padres, Ready Pac produce and the San Diego Zoo's Panda Cam and website. In addition to the Gold Rush Ranch Project, she has prepared scoping, workshop, and public outreach open house materials for the Saltworks Project, Mariposa Agri-Tourism Project, and Catheys Valley Community Plan Project. Her experience also includes administrative work on the City of Susanville Riverside Drive Trail Project, City of Sutter Creek On-Call Projects, Master Plan EIRs, the SPMUD Loomis Diversion Line Project, and various others.

HBA Team Organization Chart



3 APPROACH

The Town of Loomis requires on-call planning assistance on issues and projects not funded by applicants, projects funded by applicants, and brief consultation with staff to discuss interpretations of the General Plan, Zoning Code, Design Guidelines, or other Town and local regulations. Assistance may be required to provide general planning-related development and land use project review, site visits, technical plan check for planning documents and plans, map review, conformance review with Federal, State, Town, and local regulations, review for general compliance with Town Standards, ordinances, and regulations, and processing and scheduling of project applications. Additionally, work will include close working relationships with Town planning staff and the staff of other Town departments, jurisdictions, agencies, and the public; providing CEQA analysis and data compilation and analysis; meeting with applicants to discuss and review applications; and presenting projects to the Town Council and Planning Commission and providing planning direction and meeting materials. The work is to be conducted in a timely and concise manner to streamline the review process and maintain the schedules of multiple, competing projects, including special, large projects that may require additional time and attention. It is also understood that the Town may need assistance in the process of updating the Town's General Plan. The Town may issue separate Task Orders for major projects that have agreements for reimbursement and processing between the applicant and Town.

Project Management

HBA will maintain the program schedule, time records, and fiscal accounting and submit monthly progress reports to the Town through the contract term. The progress reports will provide a description of the work completed during the invoice period, a discussion of the work anticipated in the next billing period, and a description of potential issues with a corresponding resolution of each issue.

Data and deliverables will be accessible to the Town via BOX.com, a cloud based collaborative site. Administrative drafts of documents will be made available to the Town for review and comment. Box.com tracks each version of a document and each individual that accesses the document, providing the Town with the ability to track the status of deliverables as they are prepared.

On-Call Services

Based on direction received from the Town, HBA will provide on-call staff services including interpretation of plans and regulations, preparation of General Plan maintenance updates, CEQA documents, advice on processing permits or regulations, and other subjects requested by the Town. Specifically, HBA will:

- Coordinate with and develop good working relationships with Town departments and staff, neighboring jurisdictions such as Placer County and the cities of Rocklin and Roseville, area districts, and the public.
- Analyze projects for compliance with the Town's General Plan, zoning ordinance, Subdivision Map Act, Design Guidelines, specific plans and other policies applicable to the project in review.
- Compile and analyze data on economic, social, environmental, and physical factors affecting land use.

- Meet with developers, applicants, engineers, property owners, contractors, and others to discuss, advise, explain processes, and suggest improvements regarding potential projects, pre-applications, development applications, feasibility analysis, conceptual development plans, and code interpretation.
- Write Planning Commission and Town Council staff reports, resolutions, ordinances, and conditions of approval, and give oral presentations.
- Attend public hearings and community meetings.
- Analyze projects for CEQA compliance.
- Review projects and provide comment and feedback within the timelines specified by the Permit Streamlining Act and the Town, and fast-track reviews as needed.
- Manage multiple projects and competing priorities while maintaining high quality products, meeting schedules, and staying within budget.
- Facilitate special projects as needed.
- Support the Town of Loomis in the process of updating the Town's General Plan, including review of the existing General Plan content, updating for compliance with current State law and general plan requirements, environmental review, and specialized data development.
- Project Review Services for applicant reimbursable projects may include, but are not limited to:
 - Project review in compliance with federal, state, regional, and Town of Loomis regulations and policies, including the Town Fee Schedule;
 - Consultation with representatives of the Town in accessing documents prepared during the project review process;
 - Staff to the Town Council and Planning Commission;
 - Outreach and public involvement activities;
 - Review of final maps, tentative aps, and boundary line adjustments and mergers;
 - Design review
 - Review of tree ordinance, and environmental and public health and safety plans;
 - Review of use, home occupation use, site plan, encroachment, grading, building, and sign permits and outdoor use exception;
 - Preparation of General Plan amendments, ordinance amendments, zone change, variance, and design guidelines;
 - Management of mitigation monitoring and reporting programs;
 - Preparation of CEQA compliance documents; and
 - Geographic Information Systems support.

HBA's Approach and Experience

HBA provides planning and environmental services to our clients including the preparation of California Environmental Quality Act (CEQA) and National Environmental Policy Act (NEPA) documents, planning documents in compliance with the California General Plan Guidelines, and

project review in compliance with federal, state, and local regulation. HBA prepares for and conducts public meetings and presentations to decision makers. HBA's qualifications relevant to the Town of Loomis Planning Services are provided in the following paragraphs.

1. Analyze Projects for Compliance

HBA evaluates projects to determine consistency with the community's General Plan, compliance with federal, state, and local regulations, and acceptability by stakeholders and individuals. HBA conducts a thorough review of General Plan documentation, noting the consistency of a project with each Goal, Objective, Policy, and Implementation Measure. Recommendations to bring a project into consistency are made for consideration by the decision makers. HBA has completed General Plan consistency reviews for the City of Sutter Creek, City of San Joaquin, City of Redwood City, Town of Moraga, City of Susanville, City of Rocklin, Town of Loomis, El Dorado County, County of Lassen and County of Mariposa.

HBA evaluates lot line adjustments and subdivisions, Conditional Use permits, design guidelines, sign permits, and mitigation measures. Our staff reports document the conclusions and cite the appropriate regulation, standard, or guidelines upon which our conclusions are made. HBA has completed a wide variety of recent project reviews for the City of Sutter Creek, and is currently assisting the Town of Loomis to process the Costco project.

2. Written and Oral Abilities

Documents prepared by HBA are objective, consistent, and factual. Text is focused on presenting the relevant information to decision makers with detailed technical data and backup analysis provided in appendices available for in-depth consideration. To provide document consistency we follow two procedural guidelines, the HBA Quality Assurance/Quality Control Plan and the HBA Document Style Guide. The Quality Assurance/Quality Control (QA/QC) Plan is established to ensure each deliverable is subjected to a quality assurance and quality control review. The Document Style Guide provides consistency in the look of our documents avoiding multiple formats that create duplication and confusion.

Anders, Rob, and Christy have years of experience in presenting project staff reports and environmental findings to City/Town Councils, Planning Commissions, and public audiences. Written materials, including, but not limited to staff reports, resolutions, findings, conditions of approval, and mapping, and power point presentations accompany oral presentations, when appropriate. HBA's in-house GIS capabilities allow us to create a variety of map types, ranging from standard site maps to large-scale area maps or printouts, with a wide-range of layers and data. Recent presentations have been made to the Town of Loomis Town Council, City of Sutter Creek Planning Commission and City Council, Tahoe Regional Planning Agency (TRPA) Advisory Planning Commission and Governing Board, Placer County Planning Commission and Board of Supervisors, South Tahoe Public Utility District Board, and San Joaquin City Council.

3. Preparation of CEQA Documents and Data Compilation

HBA prepares documents in compliance with CEQA, NEPA, and the rules and regulations of the TRPA. Environmental documents prepared by HBA include Categorical Exemptions, Initial Studies, Environmental Assessments, Mitigated Negative Declarations (MND), EIR's, EIS's, and Mitigation Monitoring and Reporting Programs. HBA prepares the appropriate notices for filing with the Office of Planning and Research, newspapers, and County Clerk. HBA recently completed the MND for the Meyers Area Plan in El Dorado County and the Bollinger Valley EIR for the Town of Moraga.

As needed, HBA conducts surveys and research and compiles data and reports to address the environmental, economic, and social impacts of projects. By using a team of expert subcontractors, in addition to HBA staff, HBA is able to provide high quality background data to analyze projects and application materials, and support CEQA conclusions. While not all applications will require a team of resource experts or reports, HBA has assembled a team available to provide such support as needed.

4. General Plan Update

HBA's philosophy is that the general plan is a community's legacy and must reflect the vision and desires of its citizens, workers, and property owners. Our role is to assist the community in articulating the vision and identifying policies and measures to implement that vision, thereby meeting local needs as well as the parameters of state law. Our approach includes the following:

- Integration of expertise in planning, environmental law, sciences, and public participation;
- Articulation of a clear, realistic vision for the future;
- A focus on key issues and an emphasis on local needs and desires;
- Use of a strategic planning approach to the development of policy alternatives;
- Support of implementation through clear and achievable measures with identified funding;
- A "self-mitigating" plan that integrates implementation and environmental mitigation;
- A user-friendly, highly readable document;
- Consistency of the plan with legal requirements;
- A strong on-site presence during the planning process; and
- Working as a single team with local staff and subconsultants.

Our general plan update process includes the following steps that characterize our approach:

- Identification of key issues through a public scoping process;
- Interviewing key decision makers and community stakeholders to further define issues;
- Identification of data to support the update and evaluation of the Town's current database;
- Articulation of principles that will guide the consideration of new or modified policies;
- Evaluation of the efficacy of current general plan policies and implementation programs;
- Development of policy alternatives based on principles and evaluation;
- Identification of thresholds of significance to define needed mitigation; and
- Preparation of an implementation program that also provides a mitigation monitoring program.

Our role in the development of the general plan update is as a partnership with the Town and community, acting as a guide in the process, establishing rapport and trust with the larger community, and providing advice on working toward the update goals. HBA is currently assisting the City of Sutter Creek to update the City's General Plan, and has updated the General Plans for Mariposa County and the City of San Joaquin, as well as portions of the TRPA Regional Plan and various Area Plans in the Tahoe Basin.

5. Attendance at Meetings

HBA is available to attend meetings arranged by the Town. Our clients have found HBA to be responsive. When necessary, we meet during evenings or weekends for time sensitive projects.

We provide access to HBA's conference center, a web based conferencing site that works with telephones or computers. For quick meetings when individuals cannot attend in person, this software works well.

6. Schedule Compliance

HBA works with our clients to develop achievable schedules by establishing reasonable milestones throughout the process. On several occasions, we have met short schedule demands of clients to meet state mandated deadlines, local planning review timelines, or grant funding deadlines. We meet the schedule by collecting data quickly, shortening production and review times, and obtaining permission to use minimum standards for document circulation. Two examples of short schedules include the Bayview Water Well Permit processing for the South Tahoe PUD and the Sierra Community Park MND for the City of Susanville. Tools HBA uses to adhere to our schedules include:

Schedule Management. Use a Microsoft Project compatible program to track each task, deliverable, and milestone. These will be adjusted with Town concurrence to reflect changes in the scope and/or schedule. Regular review of the schedule keeps participants informed of upcoming deliverables and meetings and the consequences of schedule change.

Scope Management. Project Manager tracks deliverables to assure the team performs within the agreed upon scope and schedule.

Progress Reports. Issue monthly progress reports to inform the Town and applicant of the status of the scope, schedule, and budget. The progress report describes activities accomplished during the month and identifies tasks to be completed within the next month. The Project Manager identifies issues and recommended resolutions. The progress report will be discussed monthly between the Town and HBA to assure both understand the progress and issues encountered in the process.

7. Site Visits

In addition to using Google maps for initial site characterization, HBA prefers to conduct a site visit and photograph the site and its surroundings prior to preparing a staff report or project evaluation. Recent projects where site visits were conducted include the Broadmeadows project in Sutter Creek, SPMUD Diversion Line project in the Town of Loomis, Tahoe South Event Center Project in Stateline, Nevada, and the Plumas Eureka Community Services District Arsenic Mitigation project in Plumas County. For projects with substantial aesthetic concerns, HBA's subcontractor utilizes drone technology to capture the site aesthetic and generate visual modeling.

8. Availability

HBA principals, Anders and Rob, are available by cell phone and email seven days a week from 7:00 AM to 10:00 PM. We often find our clients are available to talk with us or email with us after 5:00 PM on weekdays and on Sunday evenings. We keep our clients informed when we will not be available. We are available for onsite meetings if adequate notice is provided. Online collaboration tools are used if in-person meetings cannot be arranged.

9. Ability to Perform

HBA demonstrates its ability to perform with each project we work on. We manage our schedule and scope to meet the expectations of the client, at times nudging the client and assisting our client to meet their milestones. Examples of our ability to perform include completing the

LeSage Conditional Use Permit, Bowers Boundary Lot Line Adjustment, Boston Alley Conditional Use Permit project evaluations and staff reports within one week of their assignment for the City of Sutter Creek. This allowed the City to distribute the staff reports to the Planning Commission early providing additional time for review.

10. Experience with Entitlement Projects

HBA has processed and reviewed entitlement projects for the City of Sutter Creek and Tulare County including Conditional Use Permits, boundary line adjustments, and environmental documentation. Anders Hauge was a public planner for the City of Bangor, Maine, City of Woodland California, California Tahoe Regional Planning Agency, and Town of Breckenridge Colorado. Anders was the contract planner for the City of Winters and Ridgecrest, California.

11. Communications

HBA establishes lines of communication with the Town staff and project applicants at the beginning of each project. Our Communication Guidelines are used to direct the flow of communications, especially with the press and public. The principals established in the communications guidelines are:

Be Accurate. Use facts and if necessary, clearly stated experienced professional assumptions. The use of facts assures that discussions are focused on issues and not unfounded judgments. The best experts in their field need to be engaged in the process.

Be Objective. Throughout the process, objectivity must be achieved. Opportunities for solutions often develop if an objective/open minded approach is maintained. CEQA/NEPA documents require objective information and analysis, or the environmental document is at risk of not meeting legal standards.

Provide Disclosure. Disclosure throughout the process is essential to assure that each participant is conducting discussions with the same information and knowledge. Disclosure builds trust in the information used in decision-making.

Balance the Level of Detail. It is important to determine the level of detail required for an environmental document early in the review process. Greater detail would reduce any required subsequent documentation, but a longer schedule increases risks that the project or related circumstances would change, and additional evaluation would be required.

HBA uses Box.com to collaborate the production and review of documents with our clients. Box tracks each version and author, provides access to the documents through the Internet, and assures consistency in review. HBA also has the skills to create, design, and manage project websites to facilitate public communications, as well as prepare and produce effective public outreach materials.

Our success in communication with staff, decision makers, stakeholders, and the public have been demonstrated in our performance on large-scale or controversial projects conducted for the Town of Loomis, City of Redwood City, County of Mariposa, TRPA, Town of Moraga, City of Sutter Creek, City of Susanville, Southern Nevada Water Authority, and City of San Joaquin.

4 SUBCONTRACTORS

HBA utilizes subcontractors to provide technical support for specific environmental topics such as traffic and circulation, noise, air quality, biological resources, and cultural resources. A brief description of the subcontractor's HBA proposes to use as needed is provided below followed by a detailed bio for key subcontractor personnel.

MIG, Public Outreach, Planning and Design, and Biological Resources

MIG expands upon HBA's skill set and provides additional depth in design services that may be utilized dependent on the Town's project needs. MIG, Inc. is a multidisciplinary firm that specializes in a participatory, sustainable and community-based approach to design and planning. The driving philosophical principles behind our work are transparency and inclusivity with community and stakeholder interaction in all projects.

MIG thrives in complex human environments, building custom-tailored and action-oriented programs and plans that help organizations and communities realize their aspirations. MIG's multidisciplinary team has developed dozens of placemaking plans that produce results — stronger communities, sustainable environments, healthy lifestyles and energized organizations.

For each endeavor, our approach is strategic, context driven and holistic, addressing social, political, economic and physical factors to ensure our clients achieve the results they need. We approach each project from the standpoint of building collaborative teams that include multidisciplinary professionals working side-by-side with clients, users and communities to identify strategies that achieve objectives and can be implemented. At MIG, every project is viewed as a new opportunity to apply our expertise, but also to learn new approaches and techniques.

Our work is characterized by a dedication to quality and creativity, a flexible approach and a commitment to completing projects on time and within budget. MIG's areas of expertise include urban planning and design, placemaking services, strategic and comprehensive planning, complete streets planning and design, community outreach and participation, facilitation and graphic recording, trails, natural areas, and greenways planning and design, NEPA/CEQA compliance, permit and agency consultation, technical studies, and mapping and GIS analysis.

At MIG, every project is viewed as a new opportunity to apply our expertise and to collaborate on new approaches and techniques that advance the sustainability, livability and economic vibrancy of a community. MIG's experience in creating integrated, forward-thinking and implementable Specific Plans and Zoning Codes has resulted in noticeable, positive change for our client communities. We utilize the latest and most effective public outreach and engagement tools to build community support for the process and will apply them to reach a diverse section of the Santa Rosa community. We also have extensive experience developing effective implementation tools, including benchmark metrics, form-based codes, organizational strategies, pragmatic measures, and more.

MIG has extensive experience designing public outreach and involvement programs that educate the community, encourage participation and provide agency staff with meaningful community input. MIG designs and implements multi-leveled, well-documented community engagement processes and social marketing efforts aimed at increasing public understanding, confidence in decision-making, and participation in local planning processes. The process is tailored to the distinctive conditions of each project and program, as well as focuses on developing common objectives and providing a full range of successful strategies for achieving those objectives. Our

approach to strategic process design evokes creative solutions that lead to measurable outcomes and real change.

MIG is a multidisciplinary planning firm that offers comprehensive environmental consulting services with expertise in environmental impact analysis under the California Environmental Quality Act (CEQA) and National Environmental Policy Act (NEPA), technical studies, permit and consultation support, and mitigation monitoring and compliance for infrastructure projects (transportation, water, wastewater, stormwater), transit oriented and infill development, and Complete Streets projects. We offer a broad scope of services to our clients with highly qualified, experienced staff.

We have built a reputation for preparing solid, defensible environmental documents in an efficient and cost-effective manner. With 36 years of experience in its focused areas of expertise, MIG has developed a reputation for technical accuracy and innovative solutions to our client's needs. Our services are based on a thorough understanding of guiding regulations and incorporating analytical approaches to assessing environmental effects. MIG's team of environmental professionals assists our clients in navigating the sometimes complex and difficult environmental review and permitting process.

Makul Malhotra, Planning and Design

Mukul Malhotra has over 20 years of experience in urban design, planning and architecture. Since joining MIG in 2000, he has managed and contributed to a wide range of award-winning planning and design projects, addressing issues related to urban development and revitalization, streetscape design and planning, pedestrian- and transit-oriented design and preservation of neighborhood and city character. He has a Diploma in Architecture from the Sushant School of Art and Architecture, Gurgaon, India, and a Master of Urban Design from the University of California, Berkeley.

An urban designer and Complete Streets specialist, Mukul has worked with an array of cities, agencies and community groups in efforts to redevelop urban and neighborhood corridors and streetscapes in California, Nevada, Washington, Oregon, Texas, New Mexico and Massachusetts. His projects have ranged from downtowns and historic districts to new communities and university campuses. All of his projects have involved extensive agency and stakeholder coordination to ensure that final designs and plans can be effectively implemented. In addition, he has facilitated numerous working sessions, public workshops and design charrettes in conjunction with all of his projects to ensure community ownership and pride. Recent and relevant experience includes the West Capitol Avenue Streetscape and Urban Design Master Plan in West Sacramento, "R" Street Corridor Design and Development Master Plan Project and Downtown Sacramento Strategic Action Plan Project in Sacramento, the North Las Vegas Downtown Master Plan and Investment Strategy Project, the San Antonio and Dallas Complete Streets Projects, the San Pablo Avenue Specific Plan and BART Station Area Planning in El Cerrito/Richmond, and the Upper Market Street Community Vision and Design Plan in San Francisco, among many others.

Dan Amsden, AICP, Planning/Design and Public Outreach

Dan Amsden has over 20 years of experience as a planning consultant and public agency planner with expertise in land use planning and policy, general and specific plans, urban design, public outreach and meeting facilitation, planning law, GIS and graphic design. Dan brings a wealth of experience in general plan and specific plan updates, project management, community outreach and economic development. He received a B.A. in Geography from the University of California, Santa Barbara, a Master of City and Regional Planning from California Polytechnic State

University, San Luis Obispo, and holds a Graduate Certificate in Planning Law from Rutgers University. He is also a member of the American Planning Association and Urban Land Institute.

With a strong foundation in both urban planning and public policy, Dan is passionate about developing strategies and plans that are implementable, foster positive change and respond to a community's ideals and vision. He has extensive experience coordinating projects with clients, presenting to decision-makers, preparing contracts, schedules and reports, managing budgets, facilitating meetings and workshops, managing project teams and ensuring quality control for all work products. Recent and relevant experience includes the River District Placemaking and Community Engagement Project and Franklin Boulevard District Plan Project in Sacramento, the UC Davis Long Range Development Plan, Cupertino General Plan Update, Hayward General Plan Update, Cupertino General Plan Amendment, Burlingame General Plan, South Lake Tahoe General Plan Update, Galt General Plan Update, Saint Mary's College Campus Master Plan, Downtown Hawthorne Specific Plan, West Texas Street Complete Streets Project in Fairfield, and the San Pablo Avenue Complete Streets Project in El Cerrito/Richmond, among many others. Dan worked with HBA on the Gold Rush Ranch Project in Sutter Creek.

Kelsey Hubbard, Planning and Public Outreach

Kelsey Hubbard has over two years of full-time experience providing facilitation in support of land use planning and design projects. Utilizing GIS, Illustrator, and other programs, she illuminates analysis of existing site conditions; illustrates real life montages for project visioning; and formats significant information into visually arresting infographics, maps and site plans. Her experience also includes assisting with facilitation of public engagement activities; preparing client, interview and public meeting presentations along with associated materials; organizing and analyzing community outreach materials and surveys; researching relatable case studies for project reports; writing, proofreading, layout and design of reports; designing and developing standards for placemaking tactics; and applied her knowledge of green infrastructure and sustainable design to address environmental issues and transform urban spaces. She has a dual B.A. in Environmental Design: Urban Studies and Legal Studies from the University of Massachusetts Amherst, and a Master of Design in Sustainable Urban Environments from Northeastern University, Boston. Recent experience includes the Bascom Corridor Complete Streets Study in San Jose, the Franklin Boulevard Complete Street Study in Sacramento, EBMUD 2050 Demand Study, Burlingame Parks Master Plan, Patrick Henry Drive and Freedom Circle Specific Plans in Santa Clara, and the Caltrans D9 US Route 395 Lee Vining Pre-PID Outreach in Lee Vining.

Jamillah Jordan, Public Outreach

Jamillah Jordan is a planner and project manager who specializes in public outreach and multi-method issue analysis for transportation, community health and education initiatives. Jamillah combines subject-area and policy expertise with strategic planning and process skills to help clients identify and meet their goals. She received a B.A. in Psychology and Community Studies from the University of California, Santa Cruz and a M.A. in Urban Planning from the University of California, Los Angeles.

Jamillah works with a wide range of stakeholders as well as technical experts and focuses on effectively communicating information to the public in order to make projects meaningful and relevant and to gather constructive input. She advises clients on the most appropriate set of engagement tools to use to meet their unique needs and reach target audiences, drawing on both traditional and innovative techniques. She has developed and implemented public involvement plans and managed multi-lingual outreach processes. Recent experience includes the Solano Community College District Educational Master Plan Outreach, in Solano County, BART Title

VI Public Outreach Meetings, Plan Bay Area Public Workshop Facilitation for the Metropolitan Transportation Commission and Association of Bay Area Governments, Santa Monica airport Visioning Process, Soquel Creek Water District Public Outreach and Education in Capitola, Lawrence Berkeley National Laboratory Community Participation Process in Berkeley, SamTrans Service Plan Public Outreach in San Mateo, and the Energy Upgrade California Sonoma Facilitation, among many others.

Laura Moran, Ecological Restoration and Climate Change

Laura Moran has over 30 years of environmental consulting experience in biology and project management. Ms. Moran's professional specialty comprises multiple aspects of environmental studies and analyses, including climate change adaptation planning, ecosystem services valuation, wetland delineation and restoration and mitigation design. She has directed, managed and conducted a broad range of wetland delineation and resource studies, biological resource inventories, special-status species surveys, environmental impact analyses, multi-agency permitting, multi-parcel mitigation banking and environmental monitoring plans for mitigation and construction projects for various public and private sector clients. She has a B.S. in Biology from St. Lawrence University and a Bachelor of Landscape Architecture/Masters of Urban Planning Degree Program from City University of New York.

Ms. Moran has a thorough understanding of CEQA/NEPA, multiple state and federal endangered species acts and state and federal regulations and permits involving biological and water resources. She has managed a wide variety of complex, multi-jurisdictional and environmental compliance projects, involving EIR and EIS compliance documentation, as well as multi-agency consultation, reporting and permit application preparation for projects throughout the United States and in Central America. Relevant experience includes Port of San Diego Climate Mitigation and Adaptation Plan (Climate Plan) in San Diego, Nature Based Solutions to Climate Change in Ventura County, City of Palo Alto Recycles Water Facility Plan EIR, EA/FONSI, BKK Landfill IS/MND in West Covina, State Route 4 Ramp Relocation Project EIR in Hercules, City of Santa Clarita Climate Action Plan, DTE Potrero Hills PG&E Interconnection IS/MND and Permitting in Solano County, Cotati Downtown Specific Plan EIR, Chevron Renewal Project Revised EIR in Richmond, and many other EIR projects.

Amy Parravano, Wetlands, Rare Plants, and Habitat Mitigation

Amy has more than 23 years of experience in environmental consulting and research, including habitat mitigation planning, Federal and State Endangered Species Acts (FESA/ CESA), CEQA/NEPA impact analyses, and regulatory permitting for Clean Water Act (CWA) 401 and 404 and CDFW 1602, and the California Coastal Act. She has directed, managed, and conducted a broad range of biological resource studies, multi-agency permitting, and mitigation monitoring plans for public and private sector clients. Amy has developed environmental permit application strategies for unique project needs, working closely with federal, state, and local regulatory agency personnel. Amy has managed field studies and the preparation of a wide variety of technical reports including biological constraints analyses, rare plant survey reports, jurisdictional delineation reports, wetland functional assessments, wetland and habitat mitigation plans, construction monitoring, vegetation management plans, wetland permit applications, documentation for endangered species permitting, and biological resources reports in accordance with CEQA/NEPA. Amy has a B.S. in Ecology, Systematic Biology from California Polytechnic State University and is a California Rapid Assessment Methodology Practitioner, Wetlands Training Institute Certified Wetland Delineator, and has a Wetland Training Institute certification in Advanced Hydric Soils.

Amy is a skilled botanist with experience conducting rare plant surveys and preparing detailed botanical inventories for projects throughout Northern California. Recent experience includes the American River Parkway Natural Resources Management Plan and Programmatic EIR/EIS in Sacramento County, Jurisdictional Delineation/Wetland Delineation Study, NES/BA Metropolitan Transportation Commission Caltrans/FHWA Regional Express Lane Network Project in Contra Costa, Alameda, and Santa Clara Counties, Caltrans SR 89 Lake Tahoe Shoreline Water Quality Infrastructure Improvement Project and Natural Resources Protection Plan and Biological Compliance Monitoring in El Dorado and Placer Counties, Section 7 Compliance for VELB and Biological Constraints Analysis, Wetland Delineation, Permitting, Monitoring, and Restoration Plan for the SPMUD Loomis Diversion Route Project in Loomis and Rocklin, and CDFW and RWQCB Regulatory Permits, Habitat Mitigation and Monitoring Plan, and Monitoring for the Ridgecrest Specific Plan and Flood Control Infrastructure Project in Ridgecrest. Amy has provided wetland, biological resource, monitoring, and permitting services for HBA on a number of projects including the SPMUD Loomis Diversion Line Project, Heavenly Epic Project, STPUD Diamond Valley Ranch Project, Susanville Riverside Drive Trail Project and Sierra Community Park Project, Moraga Bollinger Valley Project, Lake Tahoe Water System Preliminary Engineering Project, Lake Tahoe Community College Master Plan Project, Dollar Creek Trail Project, Shingle Springs Village Project, and many others.

Michelle Gibbs, CEQA/NEPA and Permitting

Michelle Gibbs is a Senior Project Manager and Senior Planner/Biologist with 26 years of experience, specializing in CEQA and NEPA permitting and compliance, as well as Natural Resource Management. Michelle has prepared CEQA, NEPA, and joint documents for a wide variety of projects. She has a B.A. in Environmental Science with an emphasis in Biology and a Minor in Resource Management from the University of California, Berkeley.

Michelle is currently the project manager for the American River Parkway Natural Resources Management Plan and associated Programmatic EIS/EIR, and is supporting the Section 408 permitting required in the Parkway. She has managed the preparation of all documentation required for Caltrans/FHWA, including PEARs and PESs, CEQA and NEPA, including documentation for Categorical Exemptions pursuant to CEQA and Categorical Exclusions pursuant to NEPA to MNDs and complex EAs and EIRs/EISs. She is experienced in obtaining permits from the resource agencies including 10/404/401/1600 permits and emergency permits, and in supporting agency consultations required including section 7, preparation of HCPs, EFH, and Section 106. She is experienced in writing Section 4(f) Evaluations, FONPAs, RODs and FONSI, staff reports, and CEQA findings, as well as presenting at decision-maker hearings. She is knowledgeable of the requirements and processes for Phase I ESAs (or ISAs), Phase II ESAs, and PEAs. Recent experience includes the American River Parkway Natural Resources Management Plan and Programmatic EIR/EIS in Sacramento County, NEPA Biological and Cultural Resources Services at Vandenberg Air Force Base, the Vandenberg Air Force Base Launch Facility Air Permitting, Noise Studies, Biological Studies, and NEPA Compliance Project, the I-5/Magic Mountain Parkway Interchange Improvements PEAR Support, ND/EA, NES/BA/Section 7 Consultation, Section 4(f) Evaluation, 404/401/1600, FONPA, AQIA/Noise Study Report, and ISA for Caltrans District 7 in Santa Clarita, and various other projects.

Kate Werner, CEQA/NEPA and Permitting

Kate Werner is a Senior Project Manager with expertise in CEQA analysis, planning and land use issues. With 25 years of experience at MIG, Kate has managed CEQA documents on an array of land use projects including quarries, schools, residential and commercial developments and recreational uses. The projects have been located throughout the greater Bay Area and Central

Coast counties and have varied in both size and complexity. She has a B.S. in Environmental Policy Analysis and Planning from the University of California, Davis.

As a Project Manager, Kate maintains day-to-day communications with clients, directs the work of project team members, reviews and incorporates technical documents from outside contractors as well as prepares key sections of project documents. She assists clients with all aspects of the CEQA process including project scoping, notification requirements, public meetings and project findings. Recent experience includes Caltrans Technical Studies for the Serramonte Boulevard Overlay Improvement in Colma, Caltrans Technical Studies for San Pedro Terrace Trail in Pacifica, Caltrans Technical Study for the Hillsborough Asphalt Overlay Project in Hillsborough, Caltrans Technical Studies and MND for the San Juan Highway Bike Lane in San Benito County, Coyote Point Recreation Area Promenade and Shoreline Improvement Project IS/ND in San Mateo County, Polhemus Road Pipeline Replacement Project in San Mateo, Olive Hill Lane Pipeline Replacement Project in Woodside, Guadalupe Valley Quarry Mitigation Monitor in San Mateo County, and various quarry EIR projects in Aromas, San Mateo County, Santa Cruz County, and Felton.

Saxelby Acoustics, Noise

Saxelby Acoustics was formed in 2017 by Luke Saxelby. Luke is a board certified member of the Institute of Noise Control Engineering (INCE) and has been providing these services to clients for over 17 years. Prior to establishing Saxelby Acoustics, Luke worked in the positions of Senior Consultant and Vice President at j.c. brennan & associates, Inc. based in Auburn, California from 2006 to 2017.

Saxelby Acoustics provides consulting services in acoustical design, noise control engineering, and vibration isolation to clients throughout the United States. Based in Roseville, California we provide these services to architects, engineers, environmental consulting firms, developers, public agencies, land-owners, etc. Many of our projects involved assessing potential noise impacts associated with proposed development projects or public works infrastructure. In this role we evaluate the need for noise reduction measures, such as sound walls or acoustical windows, to ensure that the local noise standards are met. Our work product is often a noise study report or environmental noise analysis documenting our findings for the local jurisdiction. Often these studies are used in Environmental Impact Reports (EIR) or Mitigated Negative Declarations (MND) as a part of the environmental review process.

In addition to providing noise studies, we often consult on issues relating to architectural acoustics, noise control engineering, and vibration monitoring. Some typical projects include review of architectural building plans to ensure proper acoustical isolation in multi-family residential projects, outdoor or indoor noise control for industrial clients, and construction noise/vibration monitoring.

Luke Saxelby

Luke Saxelby has been practicing acoustic and noise control engineering for the past 17 years and is a Board Certified member of the Institute of Noise Control Engineering (INCE). He is an expert in the requirements of the California Environmental Quality Act (CEQA) relating to noise impacts and has been involved in the preparation of hundreds of noise studies, including CEQA Environmental Impact Reports (EIR) and Mitigated Negative Declarations (MND). He is also a recognized expert witness in issues relating to building acoustics and noise control and has given testimony on various legal projects including construction defect claims and CEQA litigation.

Mr. Saxelby has extensive experience in the use of complex noise modeling programs including the Federal Highway Administration (FHWA) Traffic Noise Model (TNM), the CadnaA (Computer Aided Noise Abatement) sound prediction model, the SoundPLAN acoustic model, the Federal Aviation Administration's (FAA) Integrated Noise Model (INM), and the Enhanced Acoustic Simulator for Engineers (EASE) model. He has also developed many custom computer models used in his practice. Special interests and areas of practice include the application of noise control techniques for mechanical systems, building noise control design, low noise HVAC systems, and architectural acoustics.

Mr. Saxelby was a Board for Professional Engineers and Land Surveyors Engineer-In-Training (EIT) #116045 in 2003, received his B.S. in Mechanical Engineering from California State University, Sacramento in 2004, completed the FHWA Traffic Noise Model Training Course in 2005, and was INCE Board Certified in 2011. His experience includes community noise ordinance development, compliance monitoring, noise assessments and analysis, general plan noise element development, green building code analysis, master plan and community plan noise, transportation noise assessment and various other use specific noise and vibration analysis.

While with j.c.brennan, Luke worked with HBA on a number of projects including the Moraga Bollinger Valley Project, Moraga Center Specific Plan Project, Meyers Area Plan Project, Lake Tahoe Community College Master Plan, Boulder Bay Project, Heavenly Epic Project, Sierra Community Park Project, and a variety of solar projects in Gustine and the San Joaquin Valley.

Peak & Associates, Historic and Cultural Resources

Peak & Associates, Inc., a California corporation, offers archeological services and cultural resource expertise to public agencies and private concerns. A woman-owned small business enterprise in business since 1975, Peak & Associates operates with a full-time staff of two professional archeologists and a historian/archeologist, with offices in El Dorado Hills and Chico. The company also maintains an outstanding complement of expert consultants and adjunct fieldwork and laboratory personnel ready to respond to large scale projects. Peak & Associates has the capability to carry out archeological and cultural resource projects of many types, including: intensive archeological and historical field surveys; archeological/historical section of environmental impact reports and statements; research services, archeological monitoring, and test excavations for evaluating the significance of archeological sites; site-specific historical research for legal issues; building and structure recordation and evaluation; data recovery excavations for mitigation of adverse effect; preparation of determination of eligibility and effect documents for Section 106 review; preparation of nomination forms for the National Register of Historic Places; professional analytical reports regarding all types of sensitive archeological sites and historical properties; and Historic Property Management Plans and Treatment Plans for projects with significant cultural resources.

Since the firm's incorporation late in 1975, Peak & Associates has successfully completed over 7,000 projects in the fields of public archeology and cultural resource management. These projects have ranged in scale from subdivision surveys to a survey of a 560-mile-long corridor for a power line; from single-unit test excavations through the multi-season Clarks Flat data recovery project; and from the evaluation of single residences for historical significance through the preparation of the Historic American Engineering Record documentation for Reclamation District 1000 covering thousands of acres in Sacramento and Sutter counties. A large percentage of our work is prepared for Corps of Engineers review, utilizing the guidelines provided by the Sacramento District.

HBA has utilized Peak's cultural resource expertise extensively including the SPMUD Loomis Diversion Pipeline Project and Monitoring, Susanville Riverside Trail Project, Plumas Eureka

Community Services District Arsenic Mitigation Project, the Metropolitan State Hospital Norwalk Fire Alarm System Upgrade Project, STPUD Diamond Valley Ranch Projects and Recycled Water EIR, and many others.

Melinda Peak

The president of the firm, Ms. Peak has charge of company records, acts as principal field director for survey and archeological test projects, and takes responsibility for the firm's historical research and historical evaluation activities. With a record of more than thirty- five years of field experience, Ms. Peak has been a principal investigator, field director, crew chief and assistant director on a wide range of prehistoric and historic excavations. She has directed laboratory analyses of archeological materials, including the historic period. She has also conducted a wide variety of cultural resource assessments in California, including documentary research, field survey, and report preparation. Ms. Peak is a registered professional historian. With a B.A. degree in anthropology (University of California, Berkeley), Ms. Peak has developed a second field of expertise in applied history, and has completed her thesis and received an M.A. in history at California State University, Sacramento. Through her education and experience, Ms. Peak meets the Secretary of Interior Standards for historian, architectural historian, prehistoric archeologist and historic archeologist.

In recent years, Ms. Peak has completed a number of determinations of eligibility and effect documents, assessing the eligibility of a number of sites for the National Register of Historic Places, in coordination with the Corps of Engineers and other agencies for projects requiring federal permits. She has prepared Memoranda of Agreement and Historic Property Treatment Plans for several of these projects. Ms. Peak has prepared a number of cultural resource overviews and predictive models for blocks of land proposed for future development for general and specific plans. She has been able to direct a number of surveys of these areas, allowing the models to be tested. Her credits as a historical researcher and analyst includes both rural and urban site- specific studies as well as general regional historical overviews throughout California in such widely scattered locales as the City of San Francisco, Coulterville, Mariposa County; Lake Britton, Shasta County; and the City of Los Angeles. She has conducted research on a wide variety of site types including homesteads, mines, ditches, roadways, lumber mills, railroads and landscape features. She has also conducted architectural evaluations of a number of structures. Ms. Peak has also conducted historical research for specific legal issues. She completed an assessment of a section of the Overland Emigrant Trail and served as an expert witness on the trail route. She researched the history of water rights for the Star Canyon Ranch in Calaveras County, upon which a legal opinion was based for a small hydroelectric power project. In addition, Ms. Peak has been the principal investigator for the excavations of a number of historic period archeological sites, both urban and rural. She has also monitored the excavations of a number of urban blocks in Sacramento, and led teams in site excavations using rapid recovery for the historic features.

Robert Gerry

Mr. Gerry has responsibility for directing field work, conducting transit and stadia surveys and supervising the production of all graphics. Mr. Gerry has more than forty years of service as a professional archeologist and was one of the founding members of Peak & Associates in 1975. He has also been active in historical archeology and historical resource evaluations. He has participated in test excavation in two project areas in downtown Sacramento and has produced graphics and maps for block studies in the same area. Mr. Gerry has participated in the evaluation of a number of historic bridges throughout northern California. He has conducted and directed archeological fieldwork, both surveys and excavations, throughout northern California and western Nevada. He directed the surveys for several AT&T fiber optic lines and included

areas in Idaho and Oregon as well as California. All of these projects involved site identification and evaluation and preparation of plans for avoidance or other mitigation of effect.

Mr. Gerry was field director for a cultural resources survey of the Diamond Valley Project in Alpine County, California. The project involved an overview and survey of an extensive plan area, recording and evaluation of resources and presenting the results to local Native Americans and helping to conduct a field tour with them. He also directed field survey of the Van Vleck Ranch, a large property in Sacramento County being put into a conservation easement. He has conducted surveys throughout California related to low income housing development. He was field director and primary report writer on several linear surveys of considerable length--including the San Joaquin Valley Pipeline (157 miles) for Shell Oil, the Point Arena-Dunnigan fiber optic cable (137 miles) and the Medford, Oregon, to Redding, California fiber optic cable (151 miles), the Oregon and Idaho portions of the Spokane to Boise fiber optic cable, and the San Bernardino to San Diego fiber optic cable, for American Telephone & Telegraph Company. Mr. Gerry supervised the cultural resources assessments and participated in all field surveys for the studies of water supply facilities for seven wildlife refuges in the Sacramento and San Joaquin Valleys. He has also developed a specialty in bridge replacement evaluations, completing five such studies in Tuolumne County, two in Santa Barbara County, two in Amador County and ten others in various areas of California. Mr. Gerry has had extensive experience in the recording and evaluation of mining sites in northern California and Nevada for proposed mining undertakings as well as in the course of survey for proposed subdivisions, reservoirs, and other development projects. Mr. Gerry has directed test excavations for evaluation of significance at a number of sites, both historic and prehistoric. Examples include CA-NAP-261, twelve sites on Naval Petroleum Reserve No. 1, three sites on Russell Ranch in Sacramento County, a midden site near Guinda and a village known through ethnographic literature in Murphys. In the field of historical resources, Mr. Gerry has prepared site records and significance evaluations for numerous historical buildings throughout California. He has also directed excavations for evaluation of historical archeological potential and monitored construction work in areas of known historical sensitivity.

Neal Neuenschwander

Mr. Neuenschwander has been employed by Peak & Associates, Inc. since 1986. He has gained extensive experience in both reconnaissance and excavation techniques, as well as a considerable exposure to thousands of prehistoric and historic period cultural resources. His training began with seasonal positions with the Modoc and Plumas National Forests in 1979 and 1980. In late 1983, Mr. Neuenschwander founded Professional Archeological Services, a private consulting firm where he worked as co-principal investigator on excavation and survey projects in Trinity, Shasta, Butte, and Plumas counties. During 1985, he was retained by Peak & Associates, Inc. to supervise extensive survey and excavation projects in Sonoma, Sacramento, Alpine, Tuolumne, and Calaveras counties. Neuenschwander's duties at Peak & Associates have included the field direction for multiple site excavations and surveys throughout northern, central, and southern California, Nevada, Oregon and Idaho. In this capacity, he has been responsible for the planning and implementation of every aspect of the fieldwork, analysis, and report production phases. During his thirty plus years with the company, he has developed a reputation for his ability to complete projects on-time and within budget parameters, while at the same time maximizing the recovery and analysis of data for the professional community.

Notable projects under Neuenschwander's direction include the nine week excavation at Clarks Flat in Calaveras County, eleven weeks with a crew of over twenty technicians at the Upper Mountain locale (a remote camp six miles from the nearest road), ten weeks of an over 9,000-acre survey at Elk Hills Naval Petroleum Reserve, and a two-phase excavation at CA-PLU-88, a site that contained radiocarbon evidence of the some of the earliest inhabitation of the Sierra Nevada

Mountains. Mr. Neuenschwander also served as the field director for multiple phases of recordation, testing and evaluation for the 172-mile-long Pacific Pipeline Project proposed for construction in Santa Barbara, Ventura, and Los Angeles counties. He also has served as field director or co-director on a number of AT&T fiber optic projects throughout California, Oregon and Idaho. In recent years, Neuenschwander has been involved with a number of Caltrans funded and reviewed projects throughout the area, completing surveys, Native American consultation, site testing and assisting in report preparation. He has also contributed his skills during the recordation and evaluation of a number of historic buildings including Rocklin City Hall and Taylor Hall on the California State University, Chico campus.

Foothill Associates, Biological Resources

Founded in 1995, Foothill Associates is a Veteran-owned, California Corporation with Small Business certification (#20864) that provides a wide range of environmental consulting, landscape architecture, and planning services to local governments, public agencies, and private clients. We are distinguished from our competitors by the range of complementary environmentally-based services we provide and our ability to assemble internal multidisciplinary teams that are tailored to the specific requirements of each unique project. Our diverse staff includes regulatory specialists, environmental planners, biologists, botanists, arborists, landscape architects, and GIS specialists. With this range of skills, we are qualified to address a broad array of environmental, planning, and landscape architectural issues from initial project conception through final completion. This integrated approach to project execution typically results in better assessment of the issues, more innovative design, lower costs, and shorter timeframes.

Through over twenty years of environmental consulting, Foothill Associates has experience in managing complex and controversial regulatory compliance and environmental planning projects. Foothill Associates offers in-depth knowledge and experience with the Clean Water Act (CWA), Federal and State Endangered Species Act(s) (FESA/CESA), California Department of Fish and Game (CDFG) Codes, and US Fish and Wildlife Service (USFWS), and other Federal and State environmental regulations and statutory requirements. Our staff have long-standing positive relationships with agency staff.

Our regulatory specialists and biologists work together to prepare documentation and surveys addressing State and Federally listed species. We have considerable experience conducting field surveys for threatened or endangered plant and animal species throughout Placer County. Additionally, we conduct environmental impact analyses for projects that may affect threatened or endangered species; we coordinate and consult with resources agencies regarding compliance with federal and state endangered species statutes and regulations; and develop mitigation and monitoring plans for projects with the potential to result in adverse effects to listed species.

Previous experience within the Town of Loomis includes an arborist report for the South Placer Municipal Utility District Loomis Diversion Pipeline for which HBA was the lead environmental consultant; biological constraints analysis and aquatic resources delineations for a private property on Indian Springs Road; wetland assessment for a private property on Taylor Road; aesthetic treatments for the Horseshoe Bar Interchange and native tree planting plan for the interchange loops; and landscape architecture design and public outreach for the Loomis Town Center Improvements on Taylor Road from Horseshoe Bar Road to Shawn Way.

David Bise

David Bise, President of Foothill Associates, is a senior project manager and wildlife biologist specializing in environmental permitting, client and agency coordination, project management, environmental impact assessment, and regulatory and environmental compliance. He has over

twenty years of professional experience in the environmental sciences including preparation of CEQA and NEPA documents, preparing environmental permit applications (404/401, SAA), Section 7 Biological Assessments, State Incidental Take Permit Applications, and land management plans, conducting special-status species surveys, and habitat mitigation and monitoring. David received a B.S. in Zoology from the University of California Davis in 1992, a Master of Science in Wildlife from the University of California, Berkeley in 1998, and a Master of Business Administration from the University of California Davis in 2014. He is a member of the Western Section and National Member of the Wildlife Society and a member of the Association of Environmental Professionals.

David is currently serving as project manager and permit coordination lead for environmental permitting associated with development of a 530-acre parcel in the City of Rancho Cordova for the Sunrise Douglas Project. Permit applications being prepared for the project include 404 Standard Permit, 401 WQC and CDFW SAA. The project is being designed to be consistent with the pending South Sacramento Habitat Conservation Plan. David is also currently serving as project manager for environmental compliance and construction monitoring associated with development of a site in El Dorado Hills, California for the Saratoga Estates Project. Environmental compliance issues include wetland avoidance, wetland permitting, and preparation and implementation of Workers Environmental Training sessions. He is also serving as project manager for an on-call contract for the San Joaquin Council of Governments related to site assessments for proposed projects subject to review under the San Joaquin County Multi-species Habitat Conservation and Open Space Plan. The contract involves conducting site assessments and constraints analyses for proposed projects in San Joaquin County. Contract involves coordination with client and project proponent. David is also currently managing and providing technical expertise for the Natomas Unified School District, including aquatic resource delineations, biological resource assessments, preparation of due diligence procedures for new school sites. Other recent experience includes work for the City of Folsom and the SMUD Environmental On-call Project in Sacramento and Placer counties, which included over 90 task orders for vegetation management, biological assessments, CEQA documents, and biological monitoring,

Cherry Zamora

Cherry Zamora is a Senior CEQA/NEPA Specialist at Foothill Associates with 14 years of experience preparing and overseeing environmental compliance documents. Her work has included managing environmental studies for local and Caltrans transportation projects, including roadway widenings, interchange reconfigurations, and bridge improvements. She is also experienced in environmental compliance related to airport facilities and local planning projects. In 2003, she received a B.A. in Geography from the University of California, Berkeley, and received a M.A. in Geography from the University of California, Davis in 2009.

Her recent experience includes the Landmark Commons North Civic Center Initial Study and focused EIR, the Thunder Bay National Marine Sanctuary Visitors Center Environmental Assessment, the Camino Safety Improvements IS/MND in El Dorado County, and the Pudding Creek Bridge IS/MND and technical studies in Fort Bragg. She was the lead environmental planner for the Pioneer Bluff Bridge Project and the Village Parkway Project in West Sacramento, and the Pacific Electric Inland Empire Multi-Use Trail Project for which she prepared a CEQA IS/MND and a NEPA CE.

Wood Rodgers, Traffic/Transportation and Engineering

Founded in 1997, Wood Rodgers, Inc.'s mission is to provide our clients with exceptional service, provide our employees with a great work environment, and provide lasting value to

society as a whole in the work we do. Wood Rodgers, Inc. (Wood Rodgers) began with two engineers who were determined to create an energetic and innovative engineering firm that focused on the needs of their clients and a dynamic workplace where staff were encouraged to grow. As a result, the firm has grown into a unique company incorporating innovation and quality to each project, while adhering to schedules, budgets, and environmental constraints.

Wood Rodgers is a California corporation with a diversified staff of over 265 employees to support and deliver projects throughout California and Nevada. Our staff includes: professionally registered civil; transportation; traffic; structural; hydrogeologic and geotechnical engineers; project management professionals; transportation and land planners; qualified SWPPP developers and practitioners; professional land surveyors; certified floodplain managers; professional hydrologist; landscape architects; LEED accredited professional staff; and geographic information specialists (GIS) who have had extensive experience with successfully completing both public and private projects. Our versatile and reliable team works seamlessly with other designers, engineers, public agencies, and private clients to provide quality engineering services, while meeting the economic challenges and desired aesthetics for each project.

Wood Rodgers is headquartered in Sacramento, with additional offices located in Oakland, Pleasanton, and San Dimas California; as well as Reno and Las Vegas, Nevada. Our firm-wide capabilities include: civil engineering, transportation planning and engineering, traffic modeling and analysis, traffic signal and lighting design, structural engineering, water resources engineering, water quality design and permitting, land planning, public outreach, landscape architecture, mapping/surveying, right-of-way engineering, construction management, GIS applications, geotechnical engineering, environmental services, and aviation services

Wood Rodgers has successfully managed and completed numerous award-winning projects from inception to completion throughout the region, including those that require local, state, and federal agency approvals. We take pride in the fact that our principals and management staff are closely involved with the work product and are responsive to clients' needs. Our existing relationships with federal, state, and local agencies help to ensure the successful completion of our projects. We believe that our clients' success is our success.

Mark Rayback, Principal, Engineer II

Mr. Rayback joined Wood Rodgers in 2005 and has over 26 years of experience working on projects associated with transportation, developing transportation related policy and project management. Prior to joining Wood Rodgers, Mr. Rayback served as the Chief of Staff for the California Department of Transportation (Caltrans). Mr. Rayback has demonstrated his ability to initiate and lead programs in a large, diverse organization and is a dynamic leader and project/program manager. His direct project experience has involved serving as the Project Manager for high-profile public transportation works projects utilizing his unique combination of skills and experience in Transportation Engineering and Planning, Environmental Compliance, Information Technology, and Management. Mr. Rayback has managed the preparation of Project Study Reports, Project Reports, and the development of plans, specifications and estimates packages for a variety of transportation projects, including: interchange modifications, route realignments, ramp modification projects, signal projects, green streets and streetscape projects, pavement rehabilitation, roundabouts, safety improvement projects, road widening, new connections, etc. Mr. Rayback has also managed the completion of various multi-modal transportation planning projects to develop bike path, transit facilities and pedestrian improvements. Mr. Rayback is also well versed in the requirements of the Caltrans project delivery process under full oversight and through the local assistance program. He is a registered professional engineer in California and Nevada (California No. 52723, Nevada No. 023156) and a

Qualified SWPPP Developer/Practitioner (QSD/QSP). He received a B.S. in Civil Engineering from California State University, Sacramento, in 1991.

Current and recent experience includes the Lincoln East 5th Street Sewer and Water Main Replacement Project, the Lincoln High School Roadway and Utilities Rehabilitation Project, the Caltrans District 3, SR 65 Pavement (SHOPP CAPM) Project, the Pacific Street Bike Lane and Widening Project in Rocklin, the Colusa 20 Pavement Rehabilitation Project, the City of Lincoln Safe Routes to School Project, the Truemper Street Extension Project in Sacramento, and the Mather Rails to Trails Improvement Project in Rancho Cordova. Tasks include preparation of plans, specifications, and estimates (PS&E) for roadway and drainage improvements, site investigations, geotechnical analysis, surveying, agency coordination, public outreach, and construction support, among various other tasks and products.

Steven Robinson, Associate, Engineer I

Mr. Robinson is a Transportation Design Engineer and Transportation Planner specializing in Roadway Improvements and Roadway Design, with additional expertise in the preparation of Project Study Reports, Traffic Impact Studies, and Traffic Operations Analyses Reports. Mr. Robinson has evaluated and designed intersection, interchange, and roadway improvements, roadway geometrics and profiles, storm drainage facilities, signing and striping, stage construction/traffic handling, and has prepared construction plans, specifications, and cost estimates for several roadway widening and improvement projects throughout Central and Northern California. Mr. Robinson has work experience with Caltrans, the Tahoe Transportation District, Tahoe Regional Planning Agency, Central Federal Lands Highway Division, the counties of Monterey, Napa, Placer, Sacramento, and Stanislaus, and the cities of Elk Grove, Fairfield, Greenfield, Modesto, Rancho Cordova, Roseville, Sacramento, Salinas, Sebastopol, West Sacramento, and Yuba City. He received a B.S. in Civil Engineering from the University of California, Davis, is a Registered Professional Civil Engineer in California and Nevada (California No. 73207 and Nevada No. 22622), and a Registered Professional Traffic Engineer (California No. 2621). He is also experienced in AutoCAD, Civil 3D, Geopak, Microstation, SignCAD, AutoTURN, Synchro, Traffix, Highway Capacity Software (HCS-2000), Interactive highway Safety Design Model, and various other programs.

Recent and current experience includes the East 5th Street Sewer and Water Main Replacement Project in Lincoln, the Route 20 Browns Valley Realignment and Widening Project in Yuba County, the City of Rancho Cordova Fee Program Update, State Route 89 Fanny Bridge Community Revitalization Project in Tahoe City, US 50 Stateline Community Revitalization Project, Keating Avenue Rehabilitation in Sebastopol. The Bridge District Infrastructure Project in West Sacramento, and South Lake Tahoe Transit Shelters Project. Mr. Robinson served as the Project/Design Engineer on these projects. Other tasks on these projects included grant funding applications, scheduling, signage and striping plans, construction staging and traffic control plans, ADA compliance, and PS&E.

Mario Tambellini, Engineer I

Mr. Tambellini is a transportation engineer specializing in Transportation Planning, Travel Demand Modeling, and Microsimulation Modeling. He has experience in the preparation of Traffic Impact Studies, Travel Demand Forecast Modeling Reports, and Traffic Operations Analysis Reports. Mr. Tambellini has prepared comprehensive, CEQA compliant Traffic Impact Studies for projects of various sizes throughout the California Central Valley and Bay Area. Mr. Tambellini is familiar with the impact and mitigation measure criteria for vehicular, pedestrian, bicycle, and transit facilities of a wide array of agencies including Placer County and Caltrans. Mr. Tambellini has assisted with the preparation of EIR transportation elements and is familiar

with CEQA and SB 743 requirements. Mr. Tambellini has evaluated stop controlled intersections, signal controlled intersections, roundabouts, and freeway interchanges for development and roadway improvement projects throughout central and northern California. Mr. Tambellini also has background training and experience in transportation system design, pavement engineering, and cost estimates. He has a B.S. in Civil Engineering from the University of California, Davis, and is a Registered Professional Engineer (California No. 85534). He is experienced with various traffic modeling, analysis, and simulation software including Cube, TP+, Viper, TransCAD, Synchro, Sidra, Vissim, SimTraffic, and AutoCAD.

Recent and current experience includes the SR 70 Feather River Expressway Project in Yuba and Sutter Counties, US 50 HOV Lane Project in Sacramento, Sanboard Road/Elvee Drive as US 101 Interchange Improvements Project in Salinas, Tuolumne County Regional Travel Demand Model Update, US 50 Stateline Core/Loop Road Project in South Lake Tahoe/Stateline, Fay Property Residential Subdivision Traffic Impact Study in San Benito County, Tuolumne County General Plan and Regional Transportation Plan Update EIR Traffic Study, San Antonio Retail Center Phase 2 Redevelopment Project in Mountain View, Transportation Agency for Monterey County Sales Tax Expenditure Plan Cost Estimate Project, and US 101 Brisco Road/Halcyon Road Interchanges Modifications Project. For these projects, Mr. Tambellini prepared traffic reports and studies, traffic operations analysis memorandums, traffic forecasts, simulations, and models. He is also working with the Town of Loomis to review traffic studies prepared for the Costco Project.

AMBIENT, Air Quality and Greenhouse Gas Emissions

AMBIENT Air Quality & Noise Consulting provides a broad range of services, with particular emphasis on providing analytical support and documentation for proposed projects that are subject to CEQA and NEPA requirements. AMBIENT Air Quality & Noise Consulting was founded in 2004 by Mr. Kurt Legleiter and is a California certified small business enterprise (certification number 41480). Mr. Legleiter has over 25 years of experience related to the assessment of air quality, greenhouse gas, environmental noise, and groundborne vibration impacts. AMBIENT Air Quality & Noise Consulting maintains a working knowledge of federal, state, and local regulatory requirements, including those required by the Federal Transit Administration, Federal Highway Administration and the California Department of Transportation. AMBIENT Air Quality & Noise Consulting provides a broad range of services, with particular emphasis on providing analytical support and documentation for projects subject to CEQA and NEPA requirements. Additional services include regulatory and code compliance investigations, emissions modeling, barrier feasibility analyses, ambient noise and vibration monitoring, and land use compatibility determinations.

Kurt Legleiter, Principal, Air Quality and Greenhouse Gas Emissions

Mr. Legleiter has over 25 years of experience in areas related to the assessment of air quality, greenhouse gas, noise, and groundborne vibration impacts. He maintains a comprehensive working knowledge of the regulatory environment and utilizes of state-of-the-art technology to provide clients with cost-efficient, high-quality, and technically defensible services. Mr. Legleiter maintains professional affiliations with the Air & Waste Management Association, Acoustical Society of America, and the Association of Environmental Planners. He holds a B.A in Urban and Environmental Planning and a B.S. in Environmental Health Science from California State University, Fresno. His training also includes the following: Health Risk Assessment Training, SJVAPCD (2015); CalEEMod Training, SJVAPCD (2012); Health Risk Assessment Training, CAPCOA (2010); Greenhouse Gas Model Training, BAAQMD (2010); Air Toxics, Health Risk Assessment & HARP, Bluescape Environmental (2004); Sound Power Measurement & Prediction, Bruel & Kjaer (2003); Vibration Measurement & Analysis, Bruel & Kjaer (2003);

Acoustics & Measurement Principles, Bruel & Kjaer (2003); and ISC/AERMod Air Dispersion Modeling, Lakes Environmental (2001).

Mr. Legleiter's expertise related to air quality and greenhouse gas include the preparation of impact assessments in support of CEQA and NEPA impact assessments, air quality conformity assessments, the preparation of mitigation management plans, dispersion modeling assessments, and health risk assessments. His expertise includes FHWA/Caltrans Air Quality Study Reports, and Air Quality Conformity Assessments. He has provided air quality and greenhouse gas modeling and study reports and assessments for HBA on a variety of projects including the Bollinger Valley Project and Meyers Area Plan Project.

Mr. Legleiter's expertise related to noise and ground-borne vibration include the preparation of impact assessments in support of CEQA and NEPA impact assessments, noise and ground-borne vibration monitoring, noise prediction and contour mapping, and ground-borne vibration prediction. His expertise includes FHWA/Caltrans Noise Study Reports.

3Dfx Environmental Planning, Planning and Visual Simulations

3Dfx was founded in 2006 by Aaron Souza, a local Tahoe resident and Planning graduate from Cal Poly San Luis Obispo. The original business scope of 3Dfx was creating photo realistic simulations for Tahoe development projects. The business expanded to encompass a wider range of planning services focusing on the Scenic Quality requirements of the Tahoe Regional Planning Agency codes, CEQA compliance/GIS, and visual assessment. Today the 3Dfx primary service area includes the Tahoe basin as well as expanded areas of Northern California. We approach our projects knowing the economic and time impacts that regulations can have on a project. Our goal is to minimize these impacts with our in-depth knowledge of the local codes, requirements and agencies. Recently, 3Dfx advanced their mapping and simulation capabilities by using drone technology in which drones are used to capture aerial images, produce accurate site contours, and create topographic shaded relief images. This technology can produce accurate, real-time aerial imagery, orthorectified imagery, topographic mapping, and even marketing videography.

Aaron Souza, Principal, Planning and Visual Simulations

Aaron Souza has 25 years of professional experience in environmental planning, Geographic Information System (GIS) analysis, visual simulation, visual assessment, and computer systems. He was born and raised in Gridley, California, which has given him an intimate understanding of northern California environmental planning issues and the local culture. He has extensive experience with GIS analysis and mapping for resource-based projects. He has created GIS maps and databases for wetland delineations, biological and botanical surveys, biological assessments, National Environmental Policy Act (NEPA) and California Environmental Quality Act (CEQA) documents, vegetation monitoring, habitat assessment, noxious weed mapping, sensitive resource impact analysis, resource damage assessment and regulatory permit applications.

He was the lead planner for the preparation of the recently completed joint CEQA/NEPA document for the Hammer Diversion on South Fork Cottonwood Creek Fish Passage Improvement Project, located in Tehama County. He has conducted mapping for several large and complex wetland delineations and wetland impact analyses, including the 750-acre Bidwell Ranch Conservation and Mitigation Bank project in Butte County, California, the 45-acre Lower Clear Creek Floodway Rehabilitation Project, Phase 3B, in Shasta County, California and numerous other projects in Tehama County.

Mr. Souza also has extensive experience in conducting visual simulations and viewshed analyses for aesthetic impact analysis. He conducted many of these analyses in the Lake Tahoe Basin,

where aesthetic impact analysis requirements are extremely stringent. He is proficient with many computer software programs including ArcMap, AutoCAD and Adobe Photoshop. His projects range from major casino redevelopments, ski resort master planning, marina expansions, private lakeside residential projects, pier modifications and public environmental improvement projects. His simulation projects include photorealistic simulations as well as conceptual animated simulations. He has also acted as the Project Manager and Planner for several upstart businesses in northern California. Mr. Souza worked as a Marketing Director for Design Workshop, a landscape architecture design firm, and as a Marketing Analyst for Stuart Anderson's Black Angus restaurant chain. He has worked with HBA on a variety of projects for which he prepared visual simulations of proposed development and proposed height and massing amendments to planning documents, including the Boulder Bay Redevelopment Project, Heavenly Epic Project, and the Meyers Area Plan Project. In a typical simulation, Mr. Souza first gathers base information and site photography, produces 3D modeling from CAD drawings, and matches the 3D Model to real world photos using accurate camera matching, which is followed by digital material rendering and photo enhancement, and finally images are produced comparing photos of the existing conditions to the proposed conditions. Many of Mr. Souza's projects are aided with drone photography. His drone photography experience includes marketing videography, orthorectified imagery and topographic mapping.

While earning his Bachelor's Degree, he worked as a Planner and participated in several internships for the City of Chico, the City of San Francisco, the City of Morro Bay and the City of San Luis Obispo. In these capacities, he conducted studies for mixed income housing Planned Unit Developments, conducted Land Use Surveys and scheduling of public facilities for a downtown Civic Center Study Area, conducted strategic planning for a General Plan study and assisted in determining lots and areas to be included in a Sensitive Resource Area.

Aaron is an accomplished public speaker and an active member of Rotary International. He received a Bachelor of Science degree in City and Regional Planning from California Polytechnic State University, San Luis Obispo.

5 COST PROPOSAL

HBA proposes a two-tier approach to a contract and fee schedule, effectively used with our clients.

- The first is an on-call contract billed at hourly rates reduced six percent from HBA's standard fees for Town planner professional services, those typically conducted using general funds. This reduced fee is in recognition of the long-term contract and our reduced costs for preparing proposals. HBA will work with the Town Manager in establishing the fees/lump sum costs.
- The second is a contract for Project Services paid by applicants billed hourly or lump sum at HBA's current fees.

It is understood that expenses in excess of \$500 per month must be approved in advance in writing by the Town Planner or Town Manager.

HBA estimates a reasonable maximum fee for On-Call planning and environmental services is \$75,000. This estimate assumes providing on-call staff assistance from 2 to 4 hours per week and time supporting staff on special projects such as a General Plan update or Zoning Code update. This estimate does not cover an estimate for Applicant Reimbursable projects, which will be evaluated separately when the projects are identified.

HBA's 2019 Rate Schedules are provided on the following page. Rates for each subcontractor in the HBA Team are also included.

HAUGE BRUECK A S S O C I A T E S

2019 REDUCED RATE SCHEDULE For Town On-Call Planning Services

CLASSIFICATION	HOURLY BILLING RATE
ASSOCIATE I	\$38
ASSOCIATE II	\$47
ASSOCIATE III (Johnstone)	\$66
ASSOCIATE IV	\$75
ASSOCIATE V	\$94
ASSOCIATE VI (DeMartino)	\$104
ASSOCIATE VII	\$113
ASSOCIATE VIII (Consolini)	\$132
ASSOCIATE IX	\$150
ASSOCIATE X	\$169
ASSOCIATE XI (Hauge, Brueck)	\$188
ASSOCIATE XII	\$207

2019 STANDARD RATE SCHEDULE For Applicant Reimbursable Services

CLASSIFICATION	HOURLY BILLING RATE
ASSOCIATE I	\$40
ASSOCIATE II	\$50
ASSOCIATE III (Johnstone)	\$70
ASSOCIATE IV	\$80
ASSOCIATE V	\$100
ASSOCIATE VI (DeMartino)	\$110
ASSOCIATE VII	\$120
ASSOCIATE VIII (Consolini)	\$140
ASSOCIATE IX	\$160
ASSOCIATE X	\$180
ASSOCIATE XI (Hauge, Brueck)	\$200
ASSOCIATE XII	\$220

(Updated Annually)

Hourly billing rates include labor and overhead (e.g., office space, office supplies, computers, phones, and incidentals).

Mileage billed at IRS rates.

Other direct costs (ODC) billed at actual cost plus 10% (e.g., printing, travel and subcontractors).



Billing Rates

Professional time is billed according to the rates presented below.

Team Member and Title	Hourly Billing Rate
Mukul Malhotra, Principal / Director of Urban Design	\$295
Dan Amsden, AICP, Director / Senior Planner and Urban Designer	\$175
Kelsey Hubbard, Planner and Urban Designer	\$105
Jamillah Jordan, Community Engagement Specialist	\$150
Laura Moran, Principal, Ecological Restoration	\$225
Amy Parravano, Director of Biological Services	\$185
Michelle Gibbs, Senior Environmental Project Manager	\$170
Kate Werner, Senior Environmental Project Manager	\$180
Planning and Urban Design Associate	\$110
Community Engagement Associate	\$115
Environmental Associate	\$115
Administrator	\$145

AMBIENT AIR QUALITY AND NOISE CONSULTING

FEE SCHEDULE

Rate/Hour

Kurt Legleiter, Principal..... \$150

Project Services/Tasks: Air Quality, Greenhouse Gas, Noise & Groundborne
Vibration Assessments

General Terms

1. Scheduled rates are effective for services contracted through December 2019.
2. Scheduled labor rate includes direct and indirect costs. Outside consultants and subcontractors, if applicable, will be billed at actual cost plus a 10 percent administrative fee, with prior approval from the client.

SAXELBY ACOUSTICS
2019 FEE SCHEDULE AND CONSULTING TERMS

Item	Rate
Principal Consultant <i>Regular Rate</i> <i>Legal Rate (Depositions, court testimony, etc.)</i>	\$150/hr. \$300/hr.
Technical Staff	\$100/hr.
Administrative Staff	\$75/hr.
Mileage Rate	IRS Rate (\$0.58/mile)
Meals and Lodging	\$200/day
Sound Level Meter <i>Basic (daily)</i> <i>Basic (weekly)</i> <i>Advanced (daily)</i> <i>Advanced (weekly)</i>	\$100/day \$300/week \$150/day \$500/week

Insurance Coverage

Saxelby Acoustics maintains automobile, general, and professional liability insurance policies with one million dollars coverage each and two million dollars aggregate. Certificates of insurance to our clients can be issued for no additional fee.

Request for Retainers

For new clients, a retainer of up to 50% of the contract may be required prior to beginning work on the project.

Invoicing and Terms of Payment

Saxelby Acoustics reserves the right to submit monthly invoices for services and expenses which have been incurred when the project duration is expected to exceed 30 days. Payment for professional services is due within 30 days of the invoice date, and past due thereafter. Past due invoices will incur interest at the rate of 2% per month on the balance due, unless otherwise agreed upon. We will accept bank transfer (ACH) and credit card payments for no additional fee.

PEAK & ASSOCIATES, INC.
Standard Billing Rates Effective February 1, 2019

<u>Professional Classification</u>	<u>Hourly Rate</u>
Principal Investigator	\$130.00
Archeologist/Historian IV	120.00
Archeologist/Historian III	80.00
Archeologist/Historian II	65.00
Archeologist/Historian I	50.00

Other Direct Charge Rates

Automobile mileage \$0.55/mile

Cost Reimbursement Charges: Travel costs are based on direct reimbursements for commercial transportation, including vehicle rentals. Per diem is charged at the government rate for the region.

3Dfx Environmental Planning

2019 Fee Schedule

	<u>Rate/Hour</u>
Aaron Souza, Principal	\$100



SACRAMENTO FEE SCHEDULE
Effective January 1, 2019

CLASSIFICATION	STANDARD RATE
Principal Engineer/Geologist/Surveyor/Planner/GIS/LA* II	\$245
Principal Engineer/Geologist/Surveyor/Planner/GIS/LA* I	\$215
Associate Engineer/Geologist/Surveyor/Planner/GIS/LA* III	\$200
Associate Engineer/Geologist/Surveyor/Planner/GIS/LA* II	\$190
Associate Engineer/Geologist/Surveyor/Planner/GIS/LA* I	\$180
Engineer/Geologist/Surveyor/Planner/GIS/LA* III	\$170
Engineer/Geologist/Surveyor/Planner/GIS/LA* II	\$160
Engineer/Geologist/Surveyor/Planner/GIS/LA* I	\$145
Assistant Engineer/Geologist/Surveyor/Planner/GIS/LA*	\$110
CAD Technician III	\$145
CAD Technician II	\$125
CAD Technician I	\$110
Project Coordinator	\$125
Administrative Assistant	\$105
1 Person Survey Crew	\$195
2 Person Survey Crew	\$285
3 Person Survey Crew	\$370
Consultants, Outside Services, Materials & Direct Charges	Cost Plus 10%
Overtime Work	Rate Plus 50%

*LA = Landscape Architect

Blueprints, reproductions, and outside graphic services will be charged at vendor invoice. Auto mileage will be charged at the IRS standard rate, currently 58 cents per mile.

Fee Schedule subject to change January 1, 2020.



FOOTHILL ASSOCIATES

ENVIRONMENTAL CONSULTING • PLANNING • LANDSCAPE ARCHITECTURE

2 0 1 9 R A T E S C H E D U L E

Labor Rates

Rates for Technical Staff

Senior Technical Staff	\$116-250
Legal Deposition	\$300
Legal Testimony	\$450
Associate Technical Staff	\$96-115
Assistant Technical Staff	\$50-95

Rates for CAD/GIS Staff

Senior CAD/GIS Staff	\$101-135
Associate CAD/GIS Staff	\$86-100
Assistant CAD/GIS Staff	\$50-85

Rates for Administrative Staff

Administrative Staff	\$60-95
----------------------------	---------

Insurance Coverage

Foothill Associates maintains the following insurance coverage:

Type	Amount
Errors and Omissions	\$2,000,000
General Commercial Liability	\$2,000,000
Motor Vehicle Liability	\$1,000,000
Workers Compensation	Per State of CA Requirements

Meals and Incidentals

Breakfast	\$10.00 per day
Lunch	\$15.00 per day
Dinner	\$20.00 per day
Incidentals	\$5.00 per day

Direct Expenses

Photocopy	\$0.10 per copy
Black & White Graphic (11x17)	\$0.35 each
Color Graphics (8½x11)	\$1 each
Color Graphics (11x17)	\$2 each
CAD Line Production Plot	
Black & White (bond)	\$2.40 per linear foot
Black & White (mylar)	\$10 per linear foot
CAD Line Plot	
Black & White	\$6 per linear foot
Color	\$12 per linear foot
CAD Photo Plot	
Bond Paper	\$20 per linear foot
Gloss Paper	\$30 per linear foot
Binding Fees	
Small Reports	\$3 each
Large Reports	\$5 each
Binders	\$20 each
Digital Files (on CD/DVD)	\$5 per CD/DVD
Mileage	current IRS rate
All Terrain Vehicle	\$150 per day
GPS Unit	\$110 per day
GPS App on Tablet	\$10 per day
Projector	\$110 per day
Natural Diversity Database	\$100 per run
Property Analysis Record (PAR)	\$600 per run
Incubator	\$400 per month
Laser Level and Rod	\$75 per day
Rod	\$25 per day
GPS Tablet	\$150 per day
Pressure Transducer (GW-WL16)	\$125 per day
Stream Gage (Sigma-950AV)	\$700 per day
Water Analysis	\$6-8 per sample

10% fee on subconsultants and other direct expenses.

Effective 01/01/2019. Rates subject to review and change on an annual basis

www.foothill.com
916-435-1202

6 RESUMES, RELEVANT EXPERIENCE, AND REFERENCES

Resumes for Anders Hauge, Rob Brueck, and Christy Consolini are attached in Attachment A.

Relevant Experience and References

HBA's experience for relevant on-call planning and environmental projects are listed below. The client, project, scope of services, duration, staff who worked on the project with relevant role and services provided are presented for each project.

City of Sutter Creek

Project:	On-Call Planning Staff
Scope of Services:	Provide on-call planning services to the City. Provide consultation with the planning staff, City Manager, Planning Commission, and City Council. Prepare staff reports, resolutions, conditions of approval, and CEQA documents including Categorical Exemptions, Initial Studies, and Mitigated Negative Declarations. Meet with applicants and the public. Conduct site visits, present staff reports to the Planning Commission and City Council. Prepare General Plan Updates, prepare General Plan Annual Progress Reports, review lot line adjustments, review subdivision maps, review Conditional Use Permits, review Design Standards, prepare GIS mapping, and prepare general plan and zoning amendments. HBA also provided preparation oversight and CEQA analysis for the City's Housing Element Update.
Duration:	2010 – Ongoing

Staff	Firm	Role	SERVICES PROVIDED												
			General Plan	Zoning	Subdivision Map Act	Design Review	Specific Plan	Policy	Staff Report	Resolution	Conditions of Approval	CEQA	Public Outreach / Meetings	Site Visits	Findings
Hauge	HBA	Manager	✓	✓	✓	✓	✓	✓	✓	✓	✓	✓	✓	✓	✓
Consolini	HBA	Planner	✓	✓	✓	✓	✓	✓	✓	✓	✓	✓	✓	✓	✓
DeMartino	HBA	GIS	✓	✓											✓

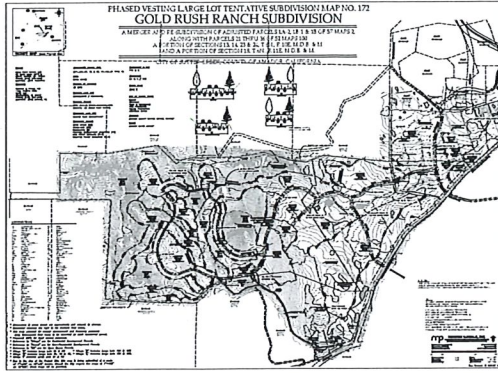
Reference

Name: Amy Gedney, City Manager
Address: 18 Main Street
Sutter Creek, CA 95865
Telephone: 209-267-5647
Email: agedney@cityofsuttercreek.org

Project:
Scope of Services:

Staff Processing of the Gold Rush Ranch and Golf Resort Project

Retained by the City to manage the processing of the Gold Rush Ranch and Golf Resort Project. Managed a project team that included the City staff, CEQA firm (ESP), and City Council and Planning Commission sub-committees. Coordinated products and activities with the applicant's



team and coordinated with the responsible agencies (Amador County Transportation Commission, Caltrans, LAFCO, Amador Recreation District, Amador Fire District, Amador Water Agency, Amador Regional Sanitation Authority, Amador County). Management included tracking costs, tracking milestones, establishing team assignments, and monthly invoicing. Evaluated the project's consistency with the General Plan. Prepared the Oak Habitat Guidelines, conducted peer review of City and applicant produced products, prepared the Specific Plan, prepared the General Plan

Amendment and Zoning Ordinance Amendment, prepared staff reports, reviewed the EIR for consistency, conducted public outreach, prepared resolutions, prepared conditions of approval, collaborated in preparation of the Development Agreement and prepared CEQA findings.

Duration:

2007-2010

Staff	Firm	Role	SERVICES PROVIDED												
			General Plan	Zoning	Subdivision Map Act	Design Review	Specific Plan	Policy	Staff Report	Resolution	Conditions of Approval	CEQA	Public Outreach / Meetings	Site Visits	Findings / Staff / Agency Interaction
Hauge	HBA	Manager	✓	✓	✓	✓	✓	✓	✓	✓	✓	✓	✓	✓	✓
Consolini	HBA	Planner	✓	✓				✓							✓
DeMartino	HBA	GIS	✓	✓			✓								✓
Johnstone	HBA	Outreach											✓		

Reference

Name: Amy Gedney, City Manager

Sean Rabe, Town Manager

Address: 18 Main Street
Sutter Creek, CA 95865

3665 Taylor Road
Loomis, CA 95650

Telephone: 209-267-5647

916-652-1840

Email: agedney@cityofsuttercreek.org

srabe@loomis.ca.gov

Town of Loomis

Project: Costco Project Processing

Scope of Services: Provide planning support services to the Town to process the Costco Project. Provide consultation with the planning staff, Town Manager, Planning Commission, Town Council, and other Town departments. Prepare staff reports, findings, resolutions, conditions of approval, ordinances, presentations, and review CEQA documents and environmental studies. Meet with applicants, neighboring jurisdictions, regulatory agencies, and the public, and prepare noticing. Conduct site visits, present staff reports to the Planning Commission and Town Council. Prepare General Plan and Zoning amendments, review lot line adjustments, review applicant plans and submittals, and review Design Standards. Conduct weekly meetings with Town staff, applicant team, and environmental review team.

Duration: 2018 – Ongoing

Staff	Firm	Role	SERVICES PROVIDED												
			General Plan	Zoning	Subdivision Map Act	Design Review	Specific Plan	Policy	Staff Report	Resolution	Conditions of Approval	CEQA	Public Outreach / Meetings	Site Visits	Findings
Hauge	HBA	Manager	✓	✓		✓			✓	✓	✓	✓	✓	✓	✓
Consolini	HBA	Planner	✓	✓		✓			✓	✓	✓	✓	✓	✓	✓
Tambellini	Wood Rodgers	Traffic				✓					✓				✓

Reference

Name: Sean Rabe, Town Manager
Address: 3665 Taylor Road
Loomis, CA 95650
Telephone: 916-652-1840
Email: srabe@loomis.ca.gov



Project: SPMUD Loomis Diversion Line Project IS/MND, Permitting, Monitoring, and Reporting

Scope of Services: Provide environmental analysis services to the Town of Loomis and the South Placer Municipal District for the Loomis Diversion Pipeline Project. Provide consultation with the planning staff, Town Manager, Planning Commission, Town Council, and other Town departments, as well as with SPMUD, contractors, and federal and state resource agencies. HBA reviewed plans and studies, conducted biological resource and cultural studies, managed subcontractors, prepared an IS/MND, noticing, a presentation to the Town Council, a SPMUD Board Resolution, and attended hearings. During construction, HBA conducted monitoring and provided environmental training to the construction team. In addition to site visits for the resource studies, HBA conducted monitoring site visits as well as on-site meetings with CDFW and the engineering /design team. HBA is currently preparing ongoing site restoration monitoring per the terms of the CDFW permit.

Duration: 2014 – Ongoing

Staff	Firm	Role	SERVICES PROVIDED												
			General Plan	Zoning	Subdivision Map Act	Design Review	Specific Plan	Policy	Staff Report	Resolution	Conditions of Approval	CEQA	Public Outreach / Meetings	Site Visits	Findings
Hauge	HBA	Manager				✓				✓	✓	✓	✓	✓	✓
Consolini	HBA	Planner				✓				✓	✓	✓	✓	✓	✓
Peak/Gerry	Peak	Cultural Resources										✓	✓	✓	✓
	Foothill	Arborist												✓	✓
Parravano	MIG	Wetlands										✓		✓	✓

Reference

Name: Eric Nielsen, SPMUD District Engineer
Address: 5807 Springview Drive
Rocklin, CA 95677
Telephone: 916-786-8555
Email: enielsen@spmud.ca.gov

Town of Moraga

Projects: **Bollinger Valley EIR, Moraga Center Specific Plan and EIR, and Town of Moraga General Plan Update**

Scope of Services: HBA has provided planning and environmental services to the Town of Moraga since 2006, with work originating prior to the formation of HBA and completed by HBA staff when employed by Parsons. Projects include the Bollinger Valley Project EIR, Moraga Center Specific Plan and EIR, General Plan Update (2002), and various biological, cultural, and wetland surveys, as well as traffic, noise, visual, geology, hydrology, air quality, and greenhouse gas emissions assessments, and other CEQA compliance. Services include preparing staff reports, CEQA documentation, conducting public meetings, preparing findings and resolutions, preparing conditions of approval, noticing, and presenting projects to the Planning Commission and Town Council. HBA conducted extensive coordination with local service and utility providers, neighboring jurisdictions, and regulatory agencies, along with the Town and project applicant. HBA is currently assisting the Town to reclassify areas identified as "Study" in the General Plan. During this time, HBA has worked with four different planning directors at the Town of Moraga, and has maintained the Town's planning history over the last two decades.

Duration: 2006 - Ongoing

Staff	Firm	Role	SERVICES PROVIDED												
			General Plan	Zoning	Subdivision Map Act	Design Review	Specific Plan	Policy	Staff Report	Resolution	Conditions of Approval	CEQA	Public Outreach / Meetings	Site Visits	Findings
Brueck	HBA	Manager	✓	✓		✓	✓	✓	✓	✓	✓	✓	✓	✓	✓
Hauge	HBA	Manager	✓	✓	✓	✓	✓	✓	✓	✓		✓	✓	✓	✓
Consolini	HBA	Planner	✓	✓				✓				✓	✓	✓	✓
DeMartino	HBA	GIS										✓			
Parravano	HBA/ MIG	Wetlands										✓		✓	
Legleiter	Ambient	Air/GHG										✓			
Saxelby	Saxelby/ ibrennan	Noise										✓		✓	

Reference

Name: Derek Farmer, Planning Director
Address: 329 Rheem Blvd.
Moraga, CA 94556
Telephone: 925-888-7041
Email: dfarmer@moraga.ca.us

El Dorado County and Tahoe Metropolitan Planning Organization

Project: Meyers Area Plan and CEQA Initial Study/TRPA Initial Environmental Checklist

Scope of Services: HBA assisted staff with the preparation of an Area Plan and prepared the associated environmental analysis (CEQA Initial Study and TRPA Initial Environmental Checklist). Tasks included ensuring the Meyers Area Plan met certain goals of the Regional Plan including the provision of higher density mixed-use development, transit and pedestrian facilities and services, and infill/redevelopment opportunities. In 2016, the County contracted with HBA to update and complete the environmental documentation for the Area Plan developed in 2014 and updated in 2015. HBA conducted environmental documentation, overseeing traffic, air quality, and noise studies and modeling, visual simulations, and providing land use and growth assessments. HBA coordinated between the County, TRPA, Caltrans, and the public, conducting numerous public outreach and scoping events.

Duration: 2013 - 2017

Staff	Firm	Role	SERVICES PROVIDED												
			General Plan	Zoning	Subdivision Map Act	Design Review	Specific Plan	Policy	Staff Report	Resolution	Conditions of Approval	CEQA	Public Outreach / Meetings	Site Visits	Findings
Brueck	HBA	Manager	✓	✓		✓	✓	✓	✓	✓	✓	✓	✓	✓	✓
Consolini	HBA	Planner	✓	✓			✓	✓				✓	✓		✓
DeMartino	HBA	GIS	✓	✓								✓			
Souza	3Dfx	Visual				✓	✓					✓		✓	
Saxelby	Saxelby/ jbrennan	Noise										✓		✓	
Legleiter	Ambient	Air/GHG										✓			

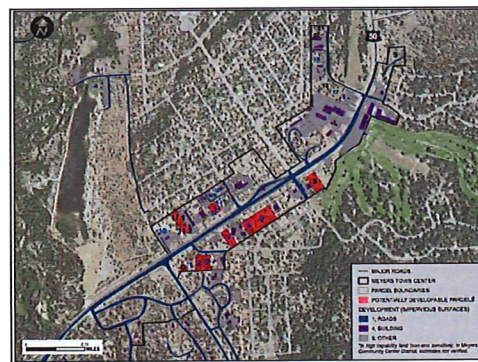
Reference

Name: Brendan Ferry, El Dorado County
Principal Planner

Address: 3924 B Emerald Bay Road
South Lake Tahoe, CA 96150

Telephone: 530-573-7905

Email: brendan.ferry@edcgov.us



City of Susanville

Project: **Riverside Drive Trail IS/MND**

Scope of Services: HBA prepared an Initial Study/ Mitigated Negative Declaration as associated studies for the Riverside Drive Trail Project. HBA worked with the City to identify appropriate Class I trail locations along Riverside Drive, with a crossing of the Susan River. Four alignments were developed and studied. Work included cultural resource test excavation and assessment, a wetland delineation, biological resource surveys, hazardous materials study, Phase I ESA, mapping, hydrology and floodplain analysis, preparation of an IS/MND and a NEPA CatEx per Caltrans requirements. To avoid losing grant funds, work was fast-tracked and completed in advance of the schedule. HBA managed a team of subcontractors and coordinated between the City, Caltrans, the Regional Water Quality Control Board, CDFW, Army Corps of Engineers, and the public. Meeting materials included noticing, sign-in and comment sheets, legal ads, and presentations.

Duration: 2013 - 2015

Staff	Firm	Role	SERVICES PROVIDED												
			General Plan	Zoning	Subdivision Map Act	Design Review	Specific Plan	Policy	Staff Report	Resolution	Conditions of Approval	CEQA	Public Outreach / Meetings	Site Visits	Findings
Hauge	HBA	Manager				✓					✓	✓	✓	✓	✓
Brueck	HBA	Manager				✓					✓				
Consolini	HBA	Planner				✓					✓	✓	✓	✓	✓
DeMartino	HBA	GIS									✓	✓			
Parravano	HBA/ MIG	Wetlands									✓		✓		✓
Neuen- schwander	Peak	Cultural									✓		✓		✓

Reference

Name: Dan Newton, Public Works Director
Address: 66 North Lassen
Susanville, CA 96130
Telephone: 530-257-1045
Email: dnewton@cityofsusanville.org

Plumas Eureka Community Services District

Project: Arsenic Mitigation Project

Scope of Services: Plumas Eureka Community Services District (PECSD) retained HBA to help the District identify an appropriate site in which to develop an arsenic treatment system to meet new federal arsenic thresholds. PECSD received notice from the State Department of Health to rectify the arsenic levels within a set timeframe and PECSD was in the process of securing state funding, therefore, HBA worked quickly with PECSD and the engineering team to identify appropriate sites and guide PECSD to sites requiring the least environmental study to meet the deadlines. Through this process, a disturbed site with no environmental resources already owned by PECSD was selected, resulting in the need for biological and cultural studies to confirm a lack of presence. HBA worked with the engineering and design team to ensure the structure avoided a riparian area, aesthetically integrated into the neighborhood, and eliminated the potential for noise and odor nuisance. HBA prepared a CEQA Categorical Exemption and findings for the PECSD Board to consider.

Duration: 2013 - 2015

Staff	Firm	Role	SERVICES PROVIDED													
			General Plan	Zoning	Subdivision Map Act	Design Review	Specific Plan	Policy	Staff Report	Resolution	Conditions of Approval	CEQA	Public Outreach / Meetings	Site Visits	Findings	Staff / Agency Interaction
Hauge	HBA	Manager				✓					✓				✓	
Consolini	HBA	Planner						✓			✓	✓			✓	
DeMartino	HBA	GIS									✓					
Neuen-schwander	Peak	Cultural									✓		✓			

Reference

Name: John Rowden, PECSD General Manager
Address: 200 Lundy Lane
Blairsdon-Graeagle, CA 96103
Telephone: 530-836-1953
Email: john.rowden@digitalpath.net

7 CONFLICT OF INTEREST

HBA warrants that no official or employee of the Town, nor any business entity in which an official of the Town has an interest has been employed or retained to solicit or aid in the procuring of a resulting contract, nor that any such person will be employed in the performance of such contract without immediate divulgence of such fact to the Town. Although HBA is currently providing planning staff services to the Town of Loomis for the Costco project, this is not a conflict of interest.

8 ANTICIPATED POTENTIAL PROBLEMS

HBA does not anticipate any potential problems.

ATTACHMENT A: HBA RESUMES



Anders Hauge

Partner

w 916-283-5800

d 530-762-1641

c 916-307-7654

ahauge@haugebrueck.com

EDUCATION

B.S. City and Regional
Planning, 1971

Certified Program Manager,
2006

Desert Tortoise Training
Certification #12381

AREAS OF SPECIALIZATION

Program/Project
Management

Planning

Environmental Compliance

Resource Management

Permitting

Public Involvement

Contract Staffing

Anders Hauge is a land use planner and environmental planner responsible for managing and performing environmental, general plan, mitigation, on-call staffing, and public outreach programs. Mr. Hauge has successfully managed large, complex and controversial programs that include the management of large multidisciplinary teams to address a range of technical and political issues inherent in planning and environmental processes.

Mr. Hauge manages environmental documents meeting the requirements of the California Environmental Quality Act (CEQA), the National Environmental Policy Act (NEPA) and the Rules and Regulations of the Tahoe Regional Planning Agency (TRPA). Unique to projects within the Lake Tahoe Basin, Mr. Hauge prepares a single document that meets the combined requirements of CEQA, NEPA, and the TRPA.

Anders career has spanned 47 years, first as a public agency planner and second as a planning consultant. As a public agency planner Anders has worked in California, Maine and Colorado. As a planning consultant Anders has worked in California, Georgia, Nevada, Arizona, Venezuela, and the Dominican Republic.

Major projects managed by Mr. Hauge include: The Redwood City Saltworks Project Environmental Team, Santa Rosa Long-Term Wastewater Project EIR/EIS, Sutter Creek Gold Rush Ranch Project, South Tahoe PUD wastewater and water projects, the Lake Tahoe Airport Master Plan/EIR-EIS, the Heavenly Ski Resort Master Plan/EIR-EIS, the Nevada County General Plan and EIR, the Mariposa County General Plan and EIR, and the Arizona Military Airport Land Use Compatibility Program.

Anders is the contract planner for the City of Sutter Creek, engaged in the management of the General Plan Update and review of Use Permits and subdivisions. Anders is currently managing the Town of Loomis Costco Project processing and the SPMUD Diversion Line Project's permit implementation.

EMPLOYMENT SUMMARY

2006- Date:	Hauge Brueck Associates, LLC. Partner
2018-Date	Placer County Planning Commissioner, District 5
2015- Date:	A&J Lund Farms, Co-Trustee and Managing Partner
1989-2006:	Parsons (Harland Bartholomew & Associates), Manager
1979-1989:	Quad Consultants, Vice President
1979:	Wickersham, Hauge and Associates, Inc., President
1976-1979:	Town of Breckenridge, Colorado, Community Development Director
1974-1976:	California Tahoe Regional Planning Agency, Senior Planner/Acting Executive Officer

1973-1974:	City of Woodland, California. Associate Planner
1973-1974:	City of Winters, California. Planning Director
1971-1973:	City of Bangor, Maine. Planner I
1969-1971:	Cal Poly City and Regional Planning Library, Librarian
1967-1968:	PMT Engineers, Computer Operator & Staff Assistant
1963-1967:	Auburn Boulevard Veterinary Hospital, Staff

EMPLOYMENT

2006-Date: Hauge Brueck Associates, LLC. Partner. Mr. Hauge manages planning and environmental projects. Anders has managed the Town of Loomis SPMUD Diversion Line IS/MND, City of Susanville Riverside Trail Project IS/MND, City of San Joaquin General Plan update and EIR, Mariposa County General Plan and EIR, Sutter Creek Gold Rush Ranch Project Processing, SNWA South Valley Facilities Expansion EIS, multiple South Tahoe PUD projects, and the Redwood City Saltworks Project Environmental Scoping. Anders currently manages task order projects under the South Tahoe PUD On-Call contract, Town of Loomis Costco Processing, is the on-call staff planner for the City of Sutter Creek and manages applicant reimbursable projects for the City of Sutter Creek. Mr. Hauge is the Placer County Planning Commissioner for Supervisorial District 5.

2015-Date: A&J Lund Farms, Managing Partner. Mr. Hauge is a Co-Trustee and Managing Partner of A&J Lund Farms, a family owned farm. The farm includes approximately 400 acres in three fields located in Sutter County, California. Various crops are grown on the farm including rice, corn, melons, sunflower, tomatoes, and cucumbers. The farm is leased to Hoppin Family Farms.

1989-2006: Parsons/Harland Bartholomew & Associates. Program Director. Mr. Hauge managed Parsons' environmental team supporting the Southern Nevada Water Authority's In-State Water Resource Development Projects. Mr. Hauge managed the Santa Rosa Long-Term Wastewater Project EIR/EIS for the City of Santa Rosa implementing the Geysers Recharge Project. Mr. Hauge was the co-author of the Parsons Environmental Planning Toolkit (PEPT) an on-line interactive CEQA/NEPA analysis tool.

Mr. Hauge opened Parsons'/Harland Bartholomew & Associates Sacramento office in 1989 focusing on environmental documentation, land use planning and public outreach. The Sacramento operation expanded to include offices in Santa Rosa and Lake Tahoe. As Parsons' organizational structure evolved, Mr. Hauge managed Parsons' Western Region Planning Group and managed Parsons' State and Municipal Planning Sector.

1979-1989: Quad Consultants. Vice President. Mr. Hauge was responsible for managing Quad's Northern California programs. Mr. Hauge managed general plans, site plans, master plans, design guidelines, environmental documents, recreation plans, public outreach programs, consent building programs, and policy plans.

1979: Wickersham, Hauge and Associates, Inc. President. Mr. Hauge provided services to municipal clients in establishing performance regulations and site planning to private clients.

1976-1979: Town of Breckenridge, Colorado. Community Development Director. Mr. Hauge managed the Town's advanced planning, current planning, economic development and building

inspection services. Mr. Hauge received the American Institute of Planners Meritorious Planning Award for the Breckenridge Performance Regulatory System he co-developed and implemented.

1974-1976: California Tahoe Regional Planning Agency. Senior Planner/Acting Executive Officer. Mr. Hauge prepared the EIR on the California Tahoe Regional Plan and was a staff planner on the team that wrote the Regional Plan and Code of Ordinances. Mr. Hauge, as Acting Executive Officer, was responsible for implementation of the Regional Plan and Code of Ordinance upon adoption in 1976.

1973-1974: City of Woodland, California. Associate Planner. Mr. Hauge was responsible for multiple assignments including, developing the City's first CEQA guidelines, writing the City's first landscape ordinance, updating the sign ordinance, designing the City logo, managing the General Plan update, designing neighborhood parks, conducting project reviews, and code enforcement responsibility.

1973-1974: City of Winters, California. Planning Director. Mr. Hauge provided general planning and project review services for the City of Winters while working for the City of Woodland.

1971-1973: City of Bangor, Maine. Planner I. Mr. Hauge worked under the supervision of the planning director and was the planning staff to the Bangor Redevelopment Agency.

MEMBERSHIPS, REGISTRATIONS, AND CERTIFICATES

SNWA Desert Tortoise Training Certification #12381, 2007

Parsons Program Manager Certification, 2006

HONORARY AFFILIATIONS

Placer County Planning Commission, 2018-date.

Placer County Meadow Vista Municipal Advisory Council, 2013-2018.

Vice President, State and Local Affairs, California Chapter APA, 1983-1984.

Northern Legislative Director, California Chapter APA, 1979-1982.

Director, Sacramento Valley Section/California Chapter APA, 1975-1976, 1982-1983, 1988-1989, and 1998-2000.

Past Director, Sacramento Valley Section APA, 1989-1991 and 2000-2004.

Secretary/Treasurer, Sacramento Valley Section, American Institute of Planners, 1974-1975.

PUBLICATIONS

"Practicing Planner," National Planning Awards, Breckenridge Development Code, December 1978.

Water Environment Federation, 1998 National Conference Session, Co-author, "Turning Reclaimed Water into Energy," Orlando, Florida.

Parsons Environmental Planning Toolkit (PEPT), Parsons web site and selected client web sites, 2004

PRESENTATIONS

Sacramento Valley Section, California Chapter American Planning Association, Getting to Yes, 2017

City of Placerville Chamber of Commerce, Performance Regulatory Systems, 2011

Kiwanis Club of Sacramento Surban, Water in the Desert, 2010

Parsons Corporate Meeting and multiple regional presentations, Demonstration of Parsons Environmental Planning Toolkit (PEPT), 2004

California Chapter APA, 2002 State Conference Session speaker, "Mariposa County General Plan: Building Backwards," San Diego, October 2002.

University of California Hasting College of the Law, Hasting West-Northwest Journal of Environmental Law and Policy Sixth Annual Environmental Law Symposium "Smart Growth: How Smart Is It?" "Lessons Learned Implementing Smart Growth Strategies", San Francisco, CA, March 2001.

Metropolitan Water District of Southern California Workshop on Watershed Management, Session Leader, October 2000.

National University, Management 635, lecturer: Selling in a consulting firm, Dick Milbrodt professor, July 1998.

Water Environment Federation, 1997 National Conference Speaker, "Not in My Back Forty; Santa Rosa's Water Reuse Program," Chicago, Illinois.

Association of Environmental Professionals, 1997 Statewide Conference Speaker, "Environmental Planning in the information Age: The Internet and other New Technologies," San Francisco, CA.

Nevada Water Pollution Federation, 1997 Statewide Conference Speaker, "Reuse Opportunities of the Santa Rosa Long-Term Wastewater Project," Las Vegas.

California State Polytechnic University San Luis Obispo, Planning 102, guest lecturer, 1997.

CalTrans Land Planning Workshops, 1996

California Chapter APA Conference, speaker, "Permit Regulatory System," Santa Cruz, CA, 1979.

National Association of Home Builders, 1979 National Conference Speaker, "Breckenridge Development Code," Las Vegas.

Workshops, "Land Use Development Guidelines": Breckenridge, CO; Boulder, CO; Bozeman, Montana; Las Vegas, NV; Placerville, CA; Redding, CA, New Orleans, LA: 1978 – 1979.

American Institute of Planners, National Conference Speaker, "Breckenridge Development Code," New Orleans, 1978.

AWARDS

American Planning Association, Arizona Chapter, Multi-Agency Plan State Award, Davis-Monthan AFB-City of Tucson-Pima County-Arizona Department of Commerce, Joint Land Use Study, 2004.

American Planning Association, California Chapter, Northern Section, Award of Merit for Innovative Use of Technology, "Santa Rosa Subregional Long-Term Wastewater Project," 1998.

Association of Environmental Professionals Outstanding Environmental Analysis Document, "Santa Rosa Subregional Long-Term Wastewater Project Draft EIR/EIS," May 1997.

American Planning Association, California Chapter, Sacramento Valley Section, Award for Outstanding Comprehensive Planning Program, City of Folsom General Plan, 1989.

American Planning Association, California Chapter, Sacramento Valley Section, Award for Outstanding Comprehensive Planning Program, South Tahoe Public Utility District Mitigation Program 1983-1987, 1988.

American Institute of Planners Meritorious Program Award for the Breckenridge Colorado Development Code, 1978.

PROJECTS

Environmental Documentation

City of Auburn, CA Auburn Airport Master Plan EIR	Road Standards Negative Declaration, 2007 Catheys Valley Supplemental EIR, 2010
California Tahoe Regional Planning Agency California Tahoe Regional Plan EIR, 1976	Mount Shasta Ski Park, CA Mount Shasta Ski Park Master Plan EIR/EIS
City of Ceres, CA North Central Annexation EIR, 1990	Scoping New Life Christian Center
City of Davis, CA Mace Ranch Park EIR, 2002	New Life Christian Center Project MND, 2012
City of Dixon, CA Southwest Dixon Specific Plan EIR, 1994	Ohlone College Ohlone College Master Plan EIR
East Incline Improvement District Water Quality Improvements, 2016	Plumas-Eureka Community Services District Arsenic Mitigation Permitting 2016-2018
City of Gustine, CA Valley Vista Apartments MND, 2012 SR Solis Solar PV MND, 2012	Redwood City, CA Saltworks Project Environmental Documentation, 2010-2012
Incline Village, NV East Incline Village Water Quality Improvement Project NEPA documentation, 2015	City of Rocklin, CA Rocklin Civic Center Specific Plan EIR
City of Lodi, CA Pro-Style Sports Complex, 2001	City of Rohnert Park, CA Stadium Area Master Plan EIR, 2006-2008
Town of Loomis, CA SPMUD Diversion Line IS/MND, 2015	City of Sacramento, CA Sacramento River Marina EIR
County of Marin, CA Marin County Airport (Gross Field) EIR	City of San Joaquin Rose Solar EIR Review, 2012 San Joaquin General Plan EIR, 2012-2014
Mariposa County, CA General Plan EIR, 2006 Catheys Valley Community Plan Negative Declaration, 2007	Santa Clara County, CA Stanford University General Plan, 2000 Santa Rosa, City of, CA and US Corps of Engineers

Santa Rosa Sub-regional Long-Term
 Wastewater Project EIR/EIS, 2000-2005
 Siskiyou County, CA
 Siskiyou County Airports (5) EIRs
 Siskiyou Lake Highlands EIR
 Southern Nevada Water Authority, NV
 In-State Water Resource Development
 Projects
 Clark Lincoln and White Pine Counties
 Groundwater Development Project
 Virgin and Muddy Rivers
 Surface Water Development Project
 Three Lakes Groundwater Project
 Coyote Springs to Moapa Pipeline
 South Placer Municipal Utility District
 Diversion Pipeline Permitting, 2015-2016
 South Tahoe Public Utility District, CA
 Bayview Well EA, 2007
 Indian Creek Reservoir TMDL EA, 2007
 Recycled Water Facilities Master Plan

 City of Susanville
 Sierra Community Park MND, 2013
 Riverside Trail IS/MND, 2015
 Sutter County, CA
 Fountainville EIR
 City of Sutter Creek, CA
 Housing Element Negative Declaration,
 2007
 Housing Element Negative Declaration,
 2015
 Gold Rush Ranch and Golf Resort EIR
 editor, 2007-2009
 Tahoe Regional Planning Agency (TRPA), CA
 and NV
 Kings Run EIS
 Tahoe Queen EIR/EIS
 TRPA & PG&E
 Echo Lake Dam Replacement EA

TRPA & El Dorado County
 El Dorado County Jail at Lake Tahoe
 EIR/EIS
 Golden Bear Park Draft EIR/EIS
 TRPA & South Tahoe Public Utility District
 Wastewater Treatment Facility Expansion
 Final EIR/EIS/EIS, 1989
 Mitigation Program Development, 1980
 Mitigation Program Monitoring, 1979 -
 1988
 Wastewater Holding Pond EIR
 Fallen Leaf Lake Sewer Collection
 Modification EA
 Luther Pass Pump Station EA
 Tahoe Keys Water Well EA
 Alpine County Alternatives EIS, 2001
 TRPA & Lake Tahoe Community College
 College Master Plan Relocation EIR/EIS
 Child Care and Safety Project EA
 TRPA & City of South Lake Tahoe
 Lake Tahoe Airport Interim Service
 Agreement EA
 Air Cal Operations EIR
 Loop Road EIS/EIR
 Westates Air Service EIR/EIS
 TRPA, FAA & City of South Lake Tahoe
 Lake Tahoe Airport Master Plan
 EIR/EIS/EIS
 TRPA, USFS, & Heavenly Ski Resort
 Heavenly Ski Resort Master Plan
 EIR/EIS/EIS, 1996
 Gondola EA, 1998
 Tulare County
 Bosman Dairy EIR and Use permit
 Decision Documents, 2010
 Tule River Tribe Wastewater EIR review,
 2010
 Tule River Tribe Housing EIR review, 2010
 SolarGen Solar Projects Processing, 2010
 Stone Corral Solar PV EIR, 2012-2013
 U.S. Bureau of Reclamation & SNWA
 South Valley Facilities Expansion EIS,
 2007-2008
 City of Ventura, CA

Ventura Keys/Arrundell Baranca
Settlement, 2000
City of West Sacramento, CA
UNOCAL EIR, 1991

Sacramento River Water Filtration Plant EIR
City of Woodland, CA
Wastewater Treatment Plant EIR

Public Outreach and Consent Building

Arizona, State of
Arizona Military Regional Compatibility
Plan, 2002
West Valley/Luke AFB
Davis Monthan AFB
City of Auburn, CA
General Plan Growth Policy, 1992
City of Bangor, ME
Kenduskeag Stream Regional Park consensus
group, 1972-73
Chevron Environmental Management Company
Communications Task Force, 2001
eBusiness Task Force, 2001
El Dorado County, CA
Open Space and Conservation Steering
Committee, 1986-87
Missouri Flat Specific Plan Committee,
1988-89
South Tahoe Recreation Master Plan, 1998.
City of Folsom, CA
Folsom General Plan Committee (15),
1988-89
Folsom Recreation Plan outreach, 1988
Humbug/Willow Creek Plan, 1989
Folsom Historic District, 1990
Heavenly Ski Resort and TRPA, CA & NV
Ski Resort Master Plan Community
Workshops, 1996
Mariposa County, CA
Planning Fairs (6), 2001
Agritourism Workshop, 2007
Catheys Valley Community Plan
Workshops, 2007
Mono County, CA
MonoPlan, 1982

Nevada County, CA
General Plan Committee of 500, 1994
Redwood City, CA
Saltworks Project "Understanding the
Environmental Review Process", 2010
Saltworks Project "Land Use and Housing
Open House Scoping Meeting", 2010
Saltworks Project "Water Supply,
Wastewater, Flooding, and Sea Level Rise
Open House Scoping Meeting", 2010
Saltworks Project "Natural Resources Open
House Scoping Meeting", 2011
Saltworks Project "Transportation, Air
Quality, Noise, Greenhouse Gas Emissions
Open House Scoping Meeting", 2011
City of Santa Rosa, CA
Alternative Development Workshops,
1995-96
Project Screening Workshops, 1996-97
Preliminary Environmental Analysis
Workshops 1997
City of South Lake Tahoe & TRPA
Lake Tahoe Airport Community Education
Workshop
Lake Tahoe Airport Town Meeting
South Tahoe Public Utility District, CA
Mitigation Task Force, 1980-1985
Alpine County Alternatives Planning
Fairs, 2001
Recycled Water Facilities Master Plan
and EIR public meetings, 2007
City of Sutter Creek, CA
Gold Rush Ranch and Golf Resort
Workshops, 2007-2009
Tahoe Regional Planning Agency/US Forest
Service/Heavenly Ski Resort
Master Plan committees, 1990's
U.S. Bureau of Reclamation & SNWA

South Valley Facilities Expansion EIS
scoping meetings, 2007-2008
City of Ventura, CA
Ventura Keys/Arrundel Barranca

Settlement public meetings, 2000
Woodland, CA
Woodland Area General Plan Committee,
1974 - 1975

Community & Regional Planning

City of Auburn, CA
Auburn General Plan, 1992
Arizona, State of
Arizona Military Regional Compatibility Plan
West Valley/Luke AFB area, 2002
Davis-Monthan AFB area, 2002
City of Bangor, ME
Bangor General Plan, 1972
Open Space Plan, 1972
Town of Breckenridge, CO
Comprehensive Plan, 1978
Historic District Designation, 1977
Directional Sign Plan, 1977
Blue River Commercial Corridor Specific
Plan, 1978
California Tahoe Regional Planning Agency
Lake Tahoe Regional Plan for
California, 1976
CTRPA Housing Plan, 1976
Community of Delhi (Merced County), CA
Delhi Community Plan, 1979
Dominican Republic
National Strategic Plan, 2000
El Dorado County, CA
El Dorado County Airport Location Study,
1988
Meyers Area Community Plan, 2013
Missouri Flat Specific Plan, 1989
Open Space and Conservation Element, 1987
South Tahoe Recreation Plan, 1998
City of Folsom, CA
Folsom General Plan, 1988

Folsom Recreation Plan, 1988
Folsom Historic District Specific Plan,
1988
Humbug/Willow Creek Specific Plan,
1989
Jewett Square Developers, Bakersfield, CA
Jewett Square Specific Plan, 1981
Town of Loomis, CA
Costco Project Processing, 2018
City of Malibu, CA
Malibu General Plan, 1992
Mariposa County, CA
General Plan Update, 2000-2006
Catheys Valley Community Plan,
2007-2012
Road Standards, 2007
Mono County, CA
Community Plan for Mammoth Lakes,
1982
Nevada County, CA
Nevada County General Plan,
1992-1994
City of Oakdale, CA
Oakdale General Plan, 1992
PDVSA (National Oil Company), Venezuela
Desarrollo Armonico de Oriente (DAO),
1998
City of Ripon, CA
Ripon Specific Plan
City of Rocklin, CA
Civic Center Specific Plan, 1993
City of San Joaquin
General Plan Update, 2014
City of Sutter Creek
Gold Rush Ranch Specific Plan rewrite, 2010

General Plan and Zoning Amendment, 2010
General Plan Update, 2012
General Plan Annual Review, 2013
City Planner, 2012-date
City of Taft, CA
Downtown Redevelopment Plan
South Tahoe Public Utility District

Export Pipeline Location Study
City of Woodland, CA
Woodland General Plan 1975
Woodland General Plan Update 1986
Woodland Level of Service Study

Regulation Development

Town of Breckenridge, CO
Development Code, 1978
Design Guidelines, 1977
California Tahoe Regional Planning Agency
Code of Ordinances, 1976
Shorezone Ordinance, 1975
City of Ceres, CA
Ceres Downtown Design Guidelines,
1992
Kern County, CA
Zoning Ordinance Update
City of Selma, CA
Downtown Redevelopment Design Standards

City of Sutter Creek, CA
Oak Woodland Guidelines
Zoning Code Update, 2010
City Design Standards, 2015
City of Taft, CA
Downtown Design Guidelines
Tahoe Regional Planning Agency, NV & CA
Ordinance Update
City of Woodland, CA
Level of Service Plan, 1988
Landscape Ordinance, 1973
Sign Ordinance, 1973

Site Planning

Auburn Boulevard Veterinary Hospital
Site Master Plan, Sacramento, CA, 1979
City of Bakersfield, CA
Stockdale Estates Subdivision Plan (Sections
8 and 9), 1981
City of Bangor, ME
Kenduskeag Stream Regional Park, 1972
Downtown Pedestrian Park, 1972
Neighborhood Redevelopment Street
Improvements, 1972
Town of Breckenridge, CO
Blue River Commercial Corridor Specific
Plan, 1978
Chevron Richmond CA Refinery
Castro Site Strategic Plan, 2001

El Dorado County, CA
Missouri Flat Specific Plan
Kern County, CA
Zoning Ordinance Update
City of Paso Robles, CA
Airport Industrial Park
City of Selma, CA
Downtown Selma Revitalization Plan
Industrial Park Plan
Siskiyou County, CA
Siskiyou Airport Industrial Park Plan
Sutter Bay Company
Sutter Bay Specific Plan, Sutter County, CA
City of Wasco, CA
Wasco Industrial Park Plan

Transportation Planning

City of Auburn, CA
Auburn Airport Master Plan
California Tahoe Regional Planning Agency
Transportation Plan, 1976
El Dorado County, CA
Airport Location Study
City of Folsom, CA
Transportation System Management Plan
City of South Lake Tahoe/Tahoe Regional
Planning Agency
Lake Tahoe Airport Master Plan/Part
150 Study, 1992
Airport Summer/Winter Passenger Surveys
California Department of Transportation
Land Planning Workshops

Contract Staff

City of Ridgecrest, CA Planning Director	in-state water resource projects
Leavell Ranch On-Call services, 2013	City of Sutter Creek, CA Contract Planner for the Gold Rush Ranch Project Approval, 2007-2010
Town of Loomis, CA On-Call Staff 2018	Contract Planner for Development Review, 2010 – 2018
Southern Nevada Water Authority Safety Manager for the in-state water resource projects 2004-2006 Contract staff human resource manager for the in-state water resource projects 2003-2006 Environmental and planning staff for the	City Planning Staff, 2010-2018 County of Tulare, CA On-Call staff, 2009-2017 City of Winters, CA Planning Director, 1973-1975



Robert Brueck

Partner

p 775-267-7202

rbrueck@haugebrueck.com

EDUCATION

B.S. in Design with
emphasis in Urban
Planning, 1989

Certified Program
Manager, 2006

AREAS OF SPECIALIZATION

Program/Project
Management

Planning

Environmental Compliance

Resource Management

Permitting

Public Involvement

Contract Staffing

Robert Brueck specializes in the management and preparation of environmental and planning documents for public and private clients. Specific environmental documentation experience has included documents prepared for the California Environmental Quality Act (CEQA), National Environmental Policy Act (NEPA), Tahoe Regional Planning Agency (TRPA), and state and federal permitting. Specific planning experience has included Master Plans, Annexations, Zone Changes, and General Plan Amendments. Mr. Brueck has performed many of his assignments in the western United States, including Lake Tahoe, and has a broad knowledge of the various rules and regulations that govern development within this heavily regulated area.

Rob's expertise includes coordinating interdisciplinary team efforts with client needs and expectations; organizing and conducting public and agency dialogue; carrying out a wide variety of natural resource analyses; refining and integrating work products from interdisciplinary team members; assuring compliance with myriad environmental laws and regulations; and producing highly readable, graphically effective, and legally adequate project reports and environmental compliance documents.

Specific technical abilities include recreation and land use analysis and scenic assessment. Rob's recent experience includes the management of environmental documentation for the Lake Tahoe Community College (Facilities Master Plan EIR), TRPA and Placer County (Homewood Ski Area Master Plan EIR/EIS and Dollar Creek Shared Use Trail IS/IEC), TRPA and the USDA Forest Service, LTBMU (Heavenly Mountain Resort Master Plan EIR/EIS/EIS), TRPA and El Dorado County (Meyers Area Plan IS/IEC), and the TRPA and Tahoe Resource Conservation District (Lake-Wide Aquatic Invasive Plant Control Plan IS/IEC).

EMPLOYMENT SUMMARY

2006-DATE: Hauge Brueck Associates, LLC. Partner

1989-2006: Parsons/Harland Bartholomew & Associates. Principal Planner

REPRESENTATIVE TAHOE PROJECTS

Environmental Documentation

South Tahoe Public Utility District, CA

A-Line Phase I Export Pipeline Replacement
Project EIR/EIS/EIS

A-Line Phase II Export Pipeline Replacement
Project IS/EA

A-Line Phase III Export Pipeline
Replacement Project IS/EA

B-Line Phase II Export Pipeline Replacement
Project IS/EA

B-Line Phase III Export Pipeline
Replacement Project EIR/EIS/EIS

Angora Water Tank Replacement Project
IS/EA

Grizzly Mountain Pump Station IS/IEC

Luther Pass Pump Station Emergency Power
Project IS/EA

State of California

CTC South Tahoe Greenway Shared-
Use Trail Project IS/IEC/EA

CTC Tahoe Pines Bio and Cultural Studies

Tahoe Regional Planning Agency (TRPA), CA and NV

Boulder Bay Community Enhancement
Program Project EIS

Domus Affordable Housing Project Regional
Plan Amendments

Environmental Thresholds Update and
Interim Allocations EAs

TRPA & El Dorado County

Meyers Area Plan IS/IEC

San Bernardino Bike Trail IS/IEC (awarded)

TRPA & Placer County

Homewood Mountain Resort Ski Area Master
Plan EIR/EIS

Dollar Creek Shared-Use Trail IS/IEC

TRPA & Lake Tahoe Community College

Fine Arts Center IS/IEC

New Gymnasium and Cafeteria IS/IEC

Child Development Center and Safety
Lighting Project IS/IEC

Facilities Master Plan EIR/EIS

TRPA, USFS, & Heavenly Ski Resort

Heavenly Ski Resort Master Plan (and
Amendment) EIR/EIS/EIS

Gondola EA

Ski Lift and Ski Run EA

Heavenly Mountain Resort Epic Discovery
Project EIR/EIS/EIS

Tahoe Resource Conservation District

Lake-Wide Aquatic Invasive Plant Control
Plan IS/IEC

University of California, Davis

Tahoe Environmental Research Center
EIR/EIS



Christy Consolini
Senior Environmental
Planner

p 916-283-5800x103

cconsolini@haugebrueck.com

EDUCATION

B.A. with Honors in
Environmental Studies with
an emphasis in Policy and
Planning, 1998, UC Santa
Cruz

AREAS OF SPECIALIZATION

Program/Project
Management
Environmental Compliance
Resource Management
Planning
Permitting
Public Involvement
Contract Staffing

Christy Consolini has over 20 years of experience in environmental planning, and project and program management with an emphasis on CEQA/NEPA/TRPA, policy, and multidisciplinary problem solving. Her experience includes various types of document preparation, general research, and achieving multiagency consensus on projects. Ms. Consolini is experienced in the management and preparation of EIRs, EISs, addenda, Initial Studies, EAs, Negative Declarations, CEs, construction specifications, permits, Housing Elements, biological survey reports, and General Plans, as well as planning staff services.

Ms. Consolini provides environmental analysis and review and ensures environmental compliance with CEQA, NEPA, and TRPA, which currently includes the Bollinger Valley EIR, On-call staff services for the City of Sutter Creek, including General Plan updates, staff services to process the Loomis Costco Project, Loomis Diversion Pipeline IS/MND/permitting/environmental monitoring, Douglas County Water Systems Project, Tourist Core Area Plan Amendment IS/IEC in South Lake Tahoe, and the Tahoe South Events Center Project. Other recent experience includes the Meyers Area Plan TRPA/CEQA compliance, Plumas Eureka Community Services District Water Treatment Plant Project, City of Loyalton Sanitary Sewer Rehabilitation Project, the East Incline Village WQIP NEPA/CEQA compliance, Heavenly Epic and run-widening projects, Homewood Resort Master Plan EIR/EIS, Boulder Bay EIS, Dollar Creek Shared-Use Trail, and South Tahoe Greenway Trail. Her work focuses on land use, visual and scenic resources, recreation, population, housing, socioeconomics, public services and utilities, project compliance, document review, public outreach, project management, analysis criteria development, safety planning, quality control, and other project-specific manuals.

Ms. Consolini served as the Environmental Manager for the Freeport Regional Water Authority, where she oversaw the environmental compliance work on a \$900-million regional water supply program. Her responsibilities included the EIR/EIS and addenda, ROD, BAs, USFWS and NOAA BOs, permits, environmental training and monitoring, and was highly involved in public outreach and interagency consensus building, review of plans and specifications, RFPs, safety training documentation, property acquisition.

EMPLOYMENT SUMMARY

2008-DATE: Hauge Brueck Associates, LLC. Senior Environmental Planner
1997-2008: Parsons. Senior Environmental Planner

Employment

2007-Date: Hauge Brueck Associates, LLC. Senior Environmental Planner. Experience includes researching, writing, and preparing documents for various projects, as well as providing planning staff services. Projects include the Loomis Costco EIR, Tourist Core Area Plan Amendment IS/IEC, Lake Tahoe Community College EIR/EIS, Tahoe South Event Center Project, PECSD Arsenic Mitigation Project, Meyers Area Plan TRPA/CEQA documentation, Heavenly Epic Discovery Project EIR/EIS/EIS and Capital Improvement Projects, Bollinger Valley EIR, East Incline Village Water Quality Improvement Project, Douglas County Water Systems PERs, Riverside Drive Trail IS/MND and NEPA CE, Loomis Diversion Pipeline IS/MND and permitting/construction monitoring, Douglas County Nevada Water Systems Environmental Reporting, Shingle Springs Village Phase I IS/MND, City of Sutter Creek On-call planning staff (Housing Element Update, General Plan Update, Design Standards, various project review processing), Moraga Center Specific Plan EIR, SNWA South Valley Facilities Expansion Project EIS, Boulder Bay Community Enhancement Program Project EIS, California Tahoe Conservancy South Tahoe Greenway Shared Use Trail EIR/EIS/EIS, Homewood Ski Resort Master Plan EIR/EIS, Sierra Community Park MND (Susanville, CA), City San Joaquin General Plan, Metropolitan Hospital CatEx, and Saltworks Project. Engaged in various aspects of the projects, with a focus on land use, scenic resources, socioeconomics, population, housing, recreation, and public services and utilities, as well as document review. Other experience includes implementation of environmental training for contractors, development of Safety Plans, QA/QC Plans, other training documents, and public scoping materials.

1998-2007: Parsons. Senior Environmental Planner. Experience includes researching, writing, and preparing documents for various projects and proposals, as well as fieldwork, permitting, and project management through design and construction phases for a variety of municipal, federal, and private clients. Ms. Consolini managed the environmental planning and permitting for the Freeport Regional Water Authority, a joint-forces agency between the Sacramento County Water Agency and the East Bay Municipal Utilities District. Tasks included completion of CEQA/NEPA documentation and USFWS/NOAA Biological Opinions, coordination with various permitting and regulatory agencies and engineering and design staff to uphold environmental commitments, preparation of construction specifications, permitting, environmental monitoring and training programs, and management of various contractor activities in conjunction with environmental laws, regulations, and commitments. Permit management included consultations and agreements for: Section 7 of the ESA (NOAA NMFS and USFWS); Section 404, 10, 401 and 402 of the Clean Water Act (USACOE and RWQCB); Section 106 of the National Historic Preservation Act (SHPO); Streambed Alteration Agreements and 2081 Incidental Take Permit (CDFW); Cal/OSHA Tunneling Classification; City and County permits; State Reclamation Board permits; US Bureau of Reclamation; US Coast Guard; and UPRR; Caltrans, and CA State Parks encroachment permits.

Environmental documentation experience includes documents prepared for the California Environmental Quality Act (CEQA), National Environmental Policy Act (NEPA), Tahoe Regional Planning Agency (TRPA), and state and federal permitting. Experience in environmental documentation includes the STPUD B-Line Phase III Export Pipeline Replacement Project EIR/EIS/EIS and UC Davis Tahoe Environmental Research Center EIR/EIS, as well as project management for the Lodi ProStyle Sports Complex EIR, Mace Ranch Community Park EIR, Green Valley Rd/Silva Valley Pkwy Improvement Project, and the Sierra Pacific Power Company Hobart Mills Substation PEA. Prepared Biological Evaluations for the STPUD Gardner Mountain Emergency Well project (bald eagle) and Winton/Flagpole Tank Replacement project (northern goshawk). Conducted the STPUD B-Line Phase III forest carnivore surveys, Heavenly Ski Resort and STPUD spotted owl surveys, and UC Davis Tahoe Research Center Project mountain yellow-legged frog surveys.

1997-1998: Parsons Harland Bartholomew and Associates. Environmental Planning Intern. Tasks included document preparation, word processing, and organization.