

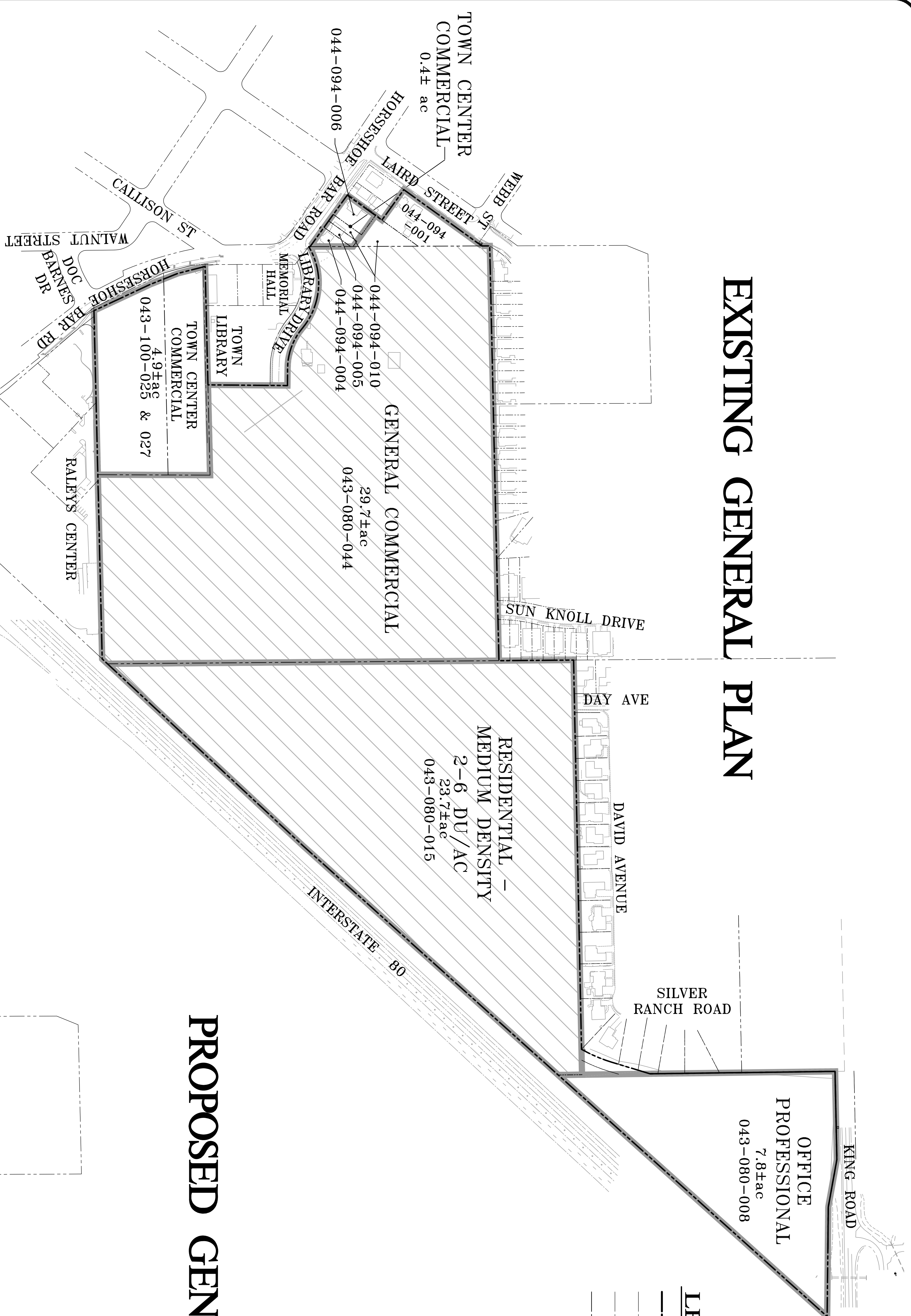
THE VILLAGE AT LOOMIS

GENERAL PLAN AMENDMENT

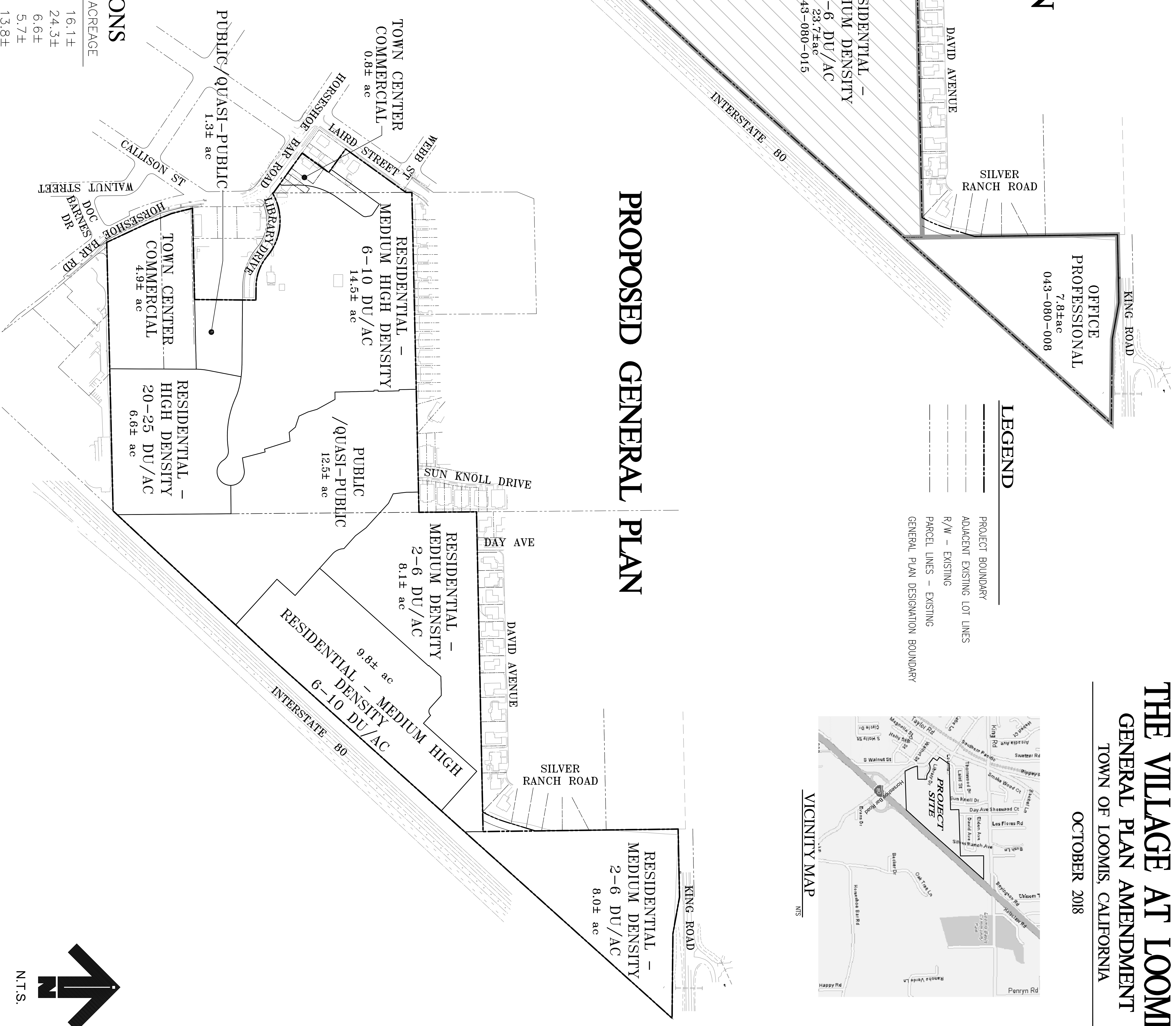
TOWN OF LOOMIS, CALIFORNIA

OCTOBER 2018

EXISTING GENERAL PLAN

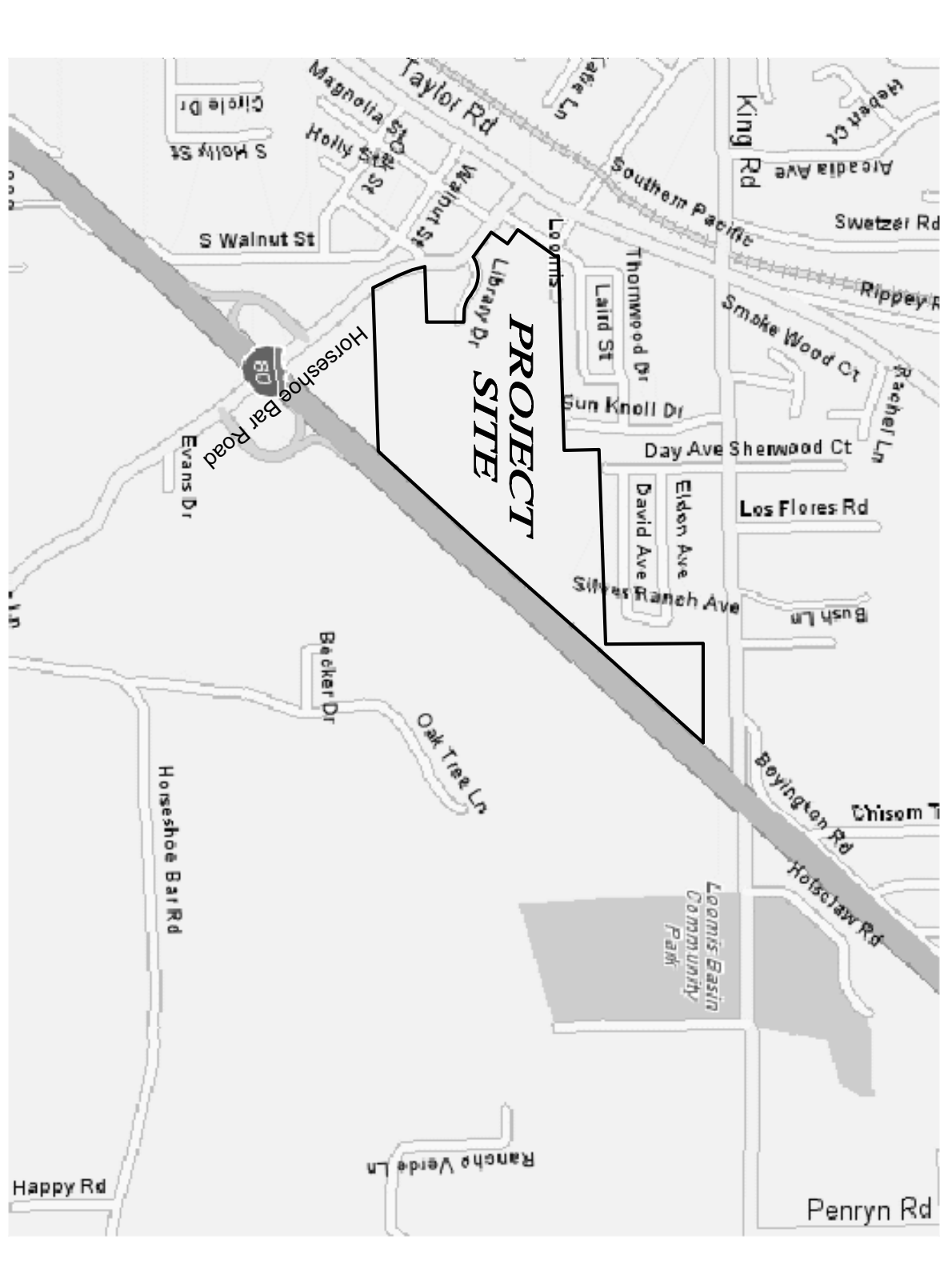


PROPOSED GENERAL PLAN



LEGEND

- PROJECT BOUNDARY
- ADJACENT EXISTING LOT LINES
- R/W - EXISTING
- PARCEL LINES - EXISTING
- GENERAL PLAN DESIGNATION BOUNDARY



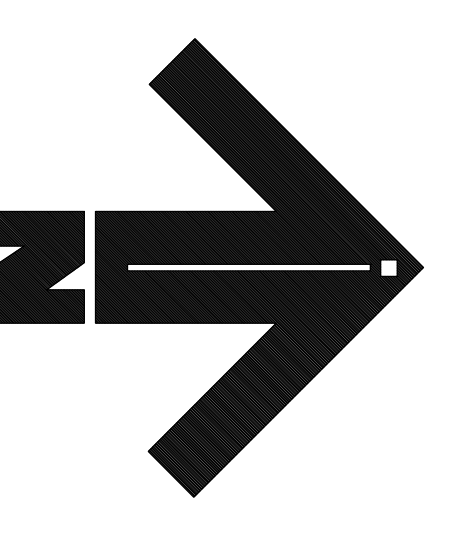
EXISTING GP DESIGNATIONS

GENERAL PLAN DESIGNATION	ACREAGE
RESIDENTIAL-MEDIUM DENSITY	23.7±
GENERAL COMMERCIAL - SPECIFIC AREA 2	29.7±
TOWN CENTER COMMERCIAL	5.3±
OFFICE PROFESSIONAL	7.8±
TOTALS	66.5±

RESIDENTIAL - HIGH DENSITY OVERLAY

PROPOSED GP DESIGNATIONS

GENERAL PLAN DESIGNATION	ACREAGE
RESIDENTIAL-MEDIUM DENSITY	16.1±
RESIDENTIAL-MEDIUM HIGH DENSITY	24.3±
RESIDENTIAL HIGH DENSITY-20	6.6±
TOWN CENTER COMMERCIAL	5.7±
PUBLIC/QUASI-PUBLIC	13.8±
TOTALS	66.5±



N.T.S.