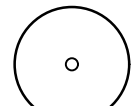


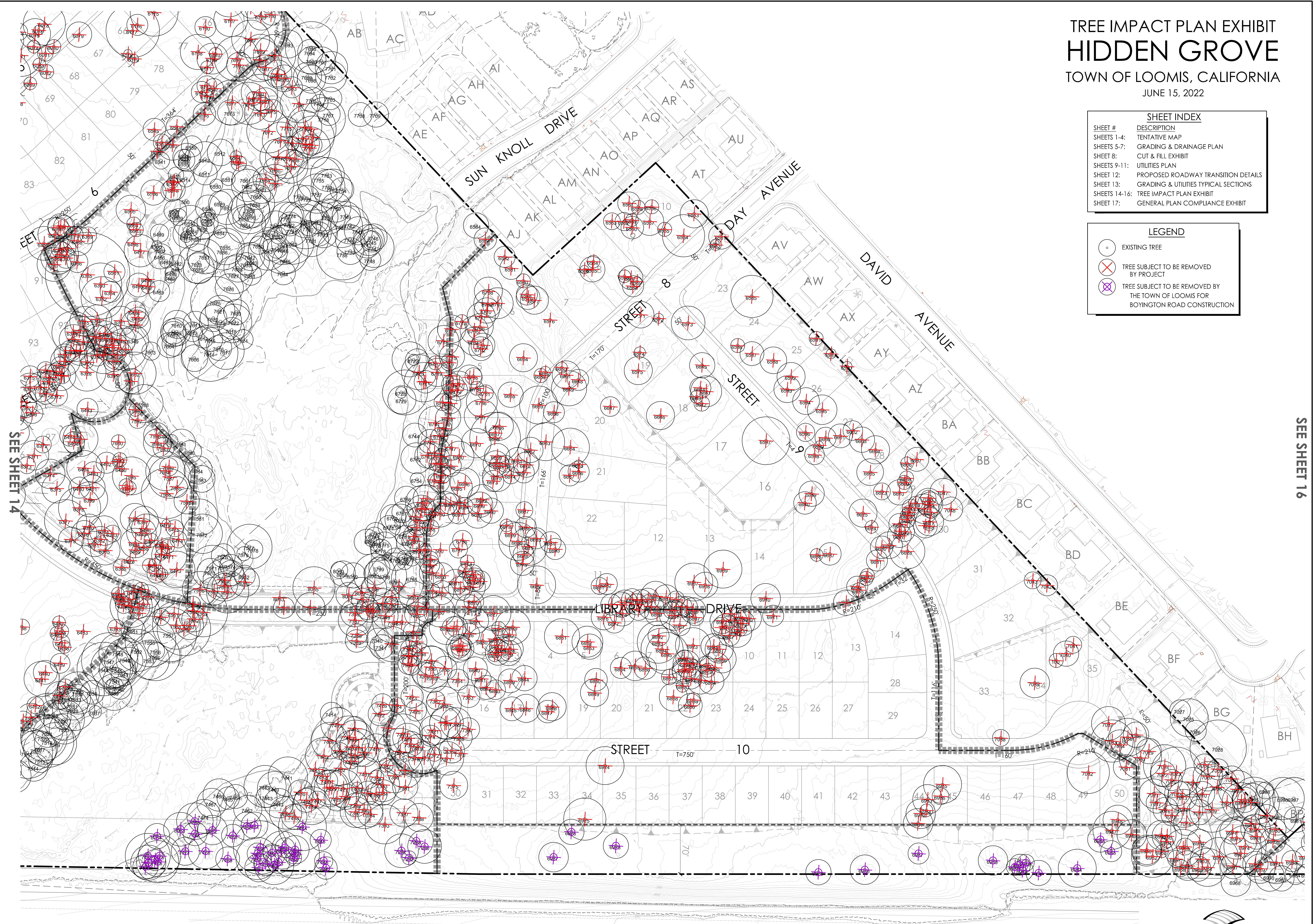


TREE IMPACT PLAN EXHIBIT
HIDDEN GROVE
 TOWN OF LOOMIS, CALIFORNIA
 JUNE 15, 2022

SHEET INDEX	
SHEET #	DESCRIPTION
SHEETS 1-4:	TENTATIVE MAP
SHEETS 5-7:	GRADING & DRAINAGE PLAN
SHEET 8:	CUT & FILL EXHIBIT
SHEETS 9-11:	UTILITIES PLAN
SHEET 12:	PROPOSED ROADWAY TRANSITION DETAILS
SHEET 13:	GRADING & UTILITIES TYPICAL SECTIONS
SHEETS 14-16:	TREE IMPACT PLAN EXHIBIT
SHEET 17:	GENERAL PLAN COMPLIANCE EXHIBIT

LEGEND	
	EXISTING TREE
	TREE SUBJECT TO BE REMOVED BY PROJECT
	TREE SUBJECT TO BE REMOVED BY THE TOWN OF LOOMIS FOR BOYINGTON ROAD CONSTRUCTION



SEE SHEET 14

SEE SHEET 16



WOOD RODGERS
 BUILDING RELATIONSHIPS ONE PROJECT AT A TIME
 3301 C St. Bldg. 100-B Tel 916.341.7760
 Sacramento, CA 95816 Fax 916.341.7767

TREES SUBJECT TO REMOVAL BY PROJECT

Table with 4 columns: Tag#, CommonName, Tree Rating, and Tree Rating. It lists various tree species and their corresponding ratings for removal.

Table with 4 columns: Tag#, CommonName, Tree Rating, and Tree Rating. It lists various tree species and their corresponding ratings for removal.

Table with 4 columns: Tag#, CommonName, Tree Rating, and Tree Rating. It lists various tree species and their corresponding ratings for removal.

Table with 4 columns: Tag#, CommonName, Tree Rating, and Tree Rating. It lists various tree species and their corresponding ratings for removal.

Table with 4 columns: Tag#, CommonName, Tree Rating, and Tree Rating. It lists various tree species and their corresponding ratings for removal.

TREE IMPACT PLAN EXHIBIT HIDDEN GROVE TOWN OF LOOMIS, CALIFORNIA JUNE 15, 2022

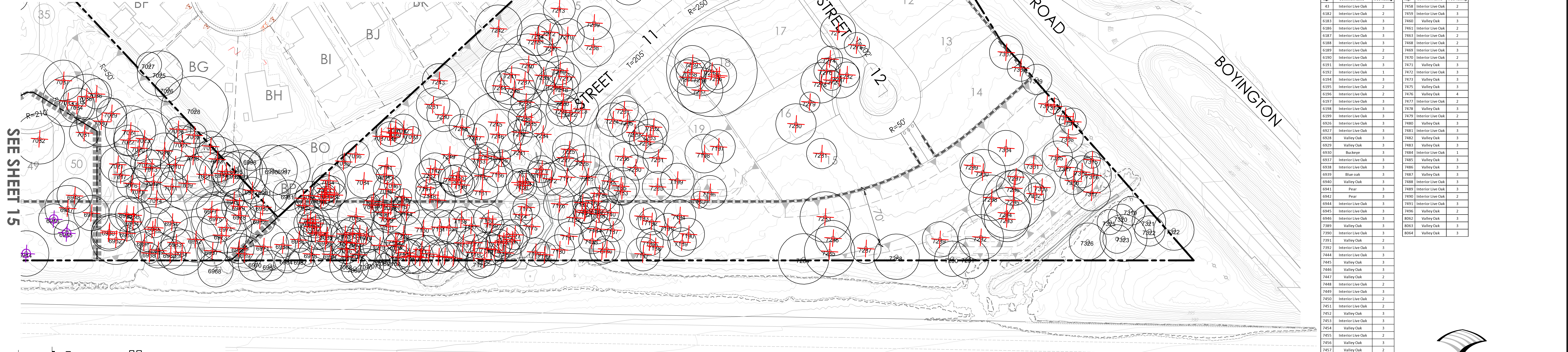
Table titled 'TREE RATING CATEGORIES' with 4 columns: Category, Description, and Example. It defines rating levels from 0 (Dead) to 5 (Excellent).

Table with 4 columns: Tag#, CommonName, Tree Rating, and Tree Rating. It lists various tree species and their corresponding ratings for removal.

SHEET INDEX table with 2 columns: SHEET # and DESCRIPTION. It maps sheet numbers to project components like 'DESIGNATIVE MAP' and 'GRADING & DRAINAGE PLAN'.

LEGEND section with symbols for 'EXISTING TREE', 'TREE SUBJECT TO BE REMOVED BY PROJECT', and 'TREE SUBJECT TO BE REMOVED BY THE TOWN OF LOOMIS FOR BOYINGTON ROAD CONSTRUCTION'.

Table with 4 columns: Tag#, CommonName, Tree Rating, and Tree Rating. It lists various tree species and their corresponding ratings for removal.



FUTURE TREES SUBJECT TO REMOVAL BY THE TOWN OF LOOMIS FOR BOYINGTON ROAD CONSTRUCTION

Table with 4 columns: Tag#, CommonName, Tree Rating, and Tree Rating. It lists various tree species and their corresponding ratings for removal.

Vertical text on the right edge of the page, likely a project or drawing number.

GENERAL PLAN COMPLIANCE EXHIBIT
HIDDEN GROVE
 TOWN OF LOOMIS, CALIFORNIA
 JUNE 15, 2022

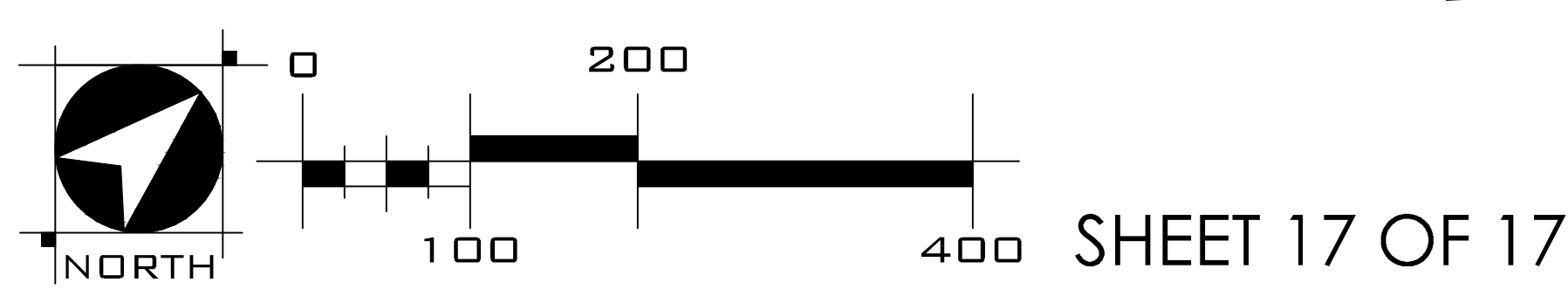


KEY

- EXISTING GENERAL PLAN BOUNDARY
- EXISTING/PROPOSED GENERAL PLAN LAND USE
- RESIDENTIAL MEDIUM DENSITY
- RESIDENTIAL MEDIUM-HIGH DENSITY
- RESIDENTIAL HIGH DENSITY
- TOWN CENTER COMMERCIAL
- PUBLIC/QUASI-PUBLIC

SHEET INDEX

SHEET #	DESCRIPTION
SHEETS 1-4:	TENTATIVE MAP
SHEETS 5-7:	GRADING & DRAINAGE PLAN
SHEET 8:	CUT & FILL EXHIBIT
SHEETS 9-11:	UTILITIES PLAN
SHEET 12:	PROPOSED ROADWAY TRANSITION DETAILS
SHEET 13:	GRADING & UTILITIES TYPICAL SECTIONS
SHEETS 14-16:	TREE IMPACT PLAN EXHIBIT
SHEET 17:	GENERAL PLAN COMPLIANCE EXHIBIT



SHEET 17 OF 17

WOOD RODGERS
 BUILDING RELATIONSHIPS ONE PROJECT AT A TIME
 3301 C St. Bldg. 100-B Tel 916.341.7760
 Sacramento, CA 95816 Fax 916.341.7767