

# GRADING & DRAINAGE PLAN

## HIDDEN GROVE

### TOWN OF LOOMIS, CALIFORNIA

JUNE 15, 2022

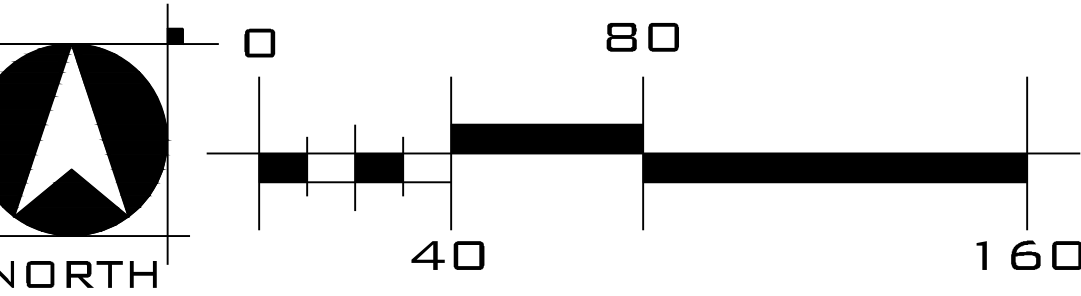
- NOTES:**
- SEE SHEET 13 FOR TYPICAL GRADING SECTIONS AND DETAILS.
  - RETAINING WALL HEIGHTS "H" REFERS TO RETAINED WALL HEIGHT. SEE TYPICAL SECTIONS ON SHEET 13.
  - SEE H&H STUDY FOR BASIS FOR EXISTING AND PROPOSED FLOODPLAINS.
  - STRUCTURE DEMOLITIONS TO BE PERFORMED UNDER SEPARATE PERMIT.
  - ALL EXISTING STRUCTURES OUTSIDE OF GRADING LIMITS SHALL REMAIN.

**LEGEND**

- |                 |                         |
|-----------------|-------------------------|
| <b>EXISTING</b> | <b>PROPOSED</b>         |
| N/A             | RETAINING WALL          |
| N/A             | BUILDING ENVELOPE       |
| — 24.0' —       | STORM DRAIN             |
| — 24.0' —       | DRAIN MANHOLE           |
| N/A             | DROP INLET              |
| — 24.0' —       | OVERLAND RELEASE PATH   |
| — 24.0' —       | DRAIN SWALE             |
| — 24.0' —       | WETLANDS BOUNDARY       |
| — 24.0' —       | 100-YEAR FLOODPLAIN     |
| — 24.0' —       | 500-YEAR FLOODPLAIN     |
| ⊗               | ROCK OUTCROPPING        |
| N/A             | PUBLIC UTILITY EASEMENT |
| — 24.0' —       | EASEMENT                |
| — 24.0' —       | GROUND CONTOUR          |
| N/A             | GRADING LIMITS          |
| N/A             | EARTH SLOPE             |
| N/A             | STREET CENTERLINE       |
| — 24.0' —       | SPOT ELEVATION          |
| N/A             | STRUCTURE DEMOLITION    |

**SHEET INDEX**

- |               |                                      |
|---------------|--------------------------------------|
| SHEET #       | DESCRIPTION                          |
| SHEETS 1-4:   | TENTATIVE MAP                        |
| SHEETS 5-7:   | GRADING & DRAINAGE PLAN              |
| SHEET 8:      | CUT & FILL EXHIBIT                   |
| SHEETS 9-11:  | UTILITIES PLAN                       |
| SHEET 12:     | PROPOSED ROADWAY TRANSITION DETAILS  |
| SHEET 13:     | GRADING & UTILITIES TYPICAL SECTIONS |
| SHEETS 14-16: | TREE IMPACT PLAN EXHIBIT             |
| SHEET 17:     | GENERAL PLAN COMPLIANCE EXHIBIT      |



SHEET 5 OF 17

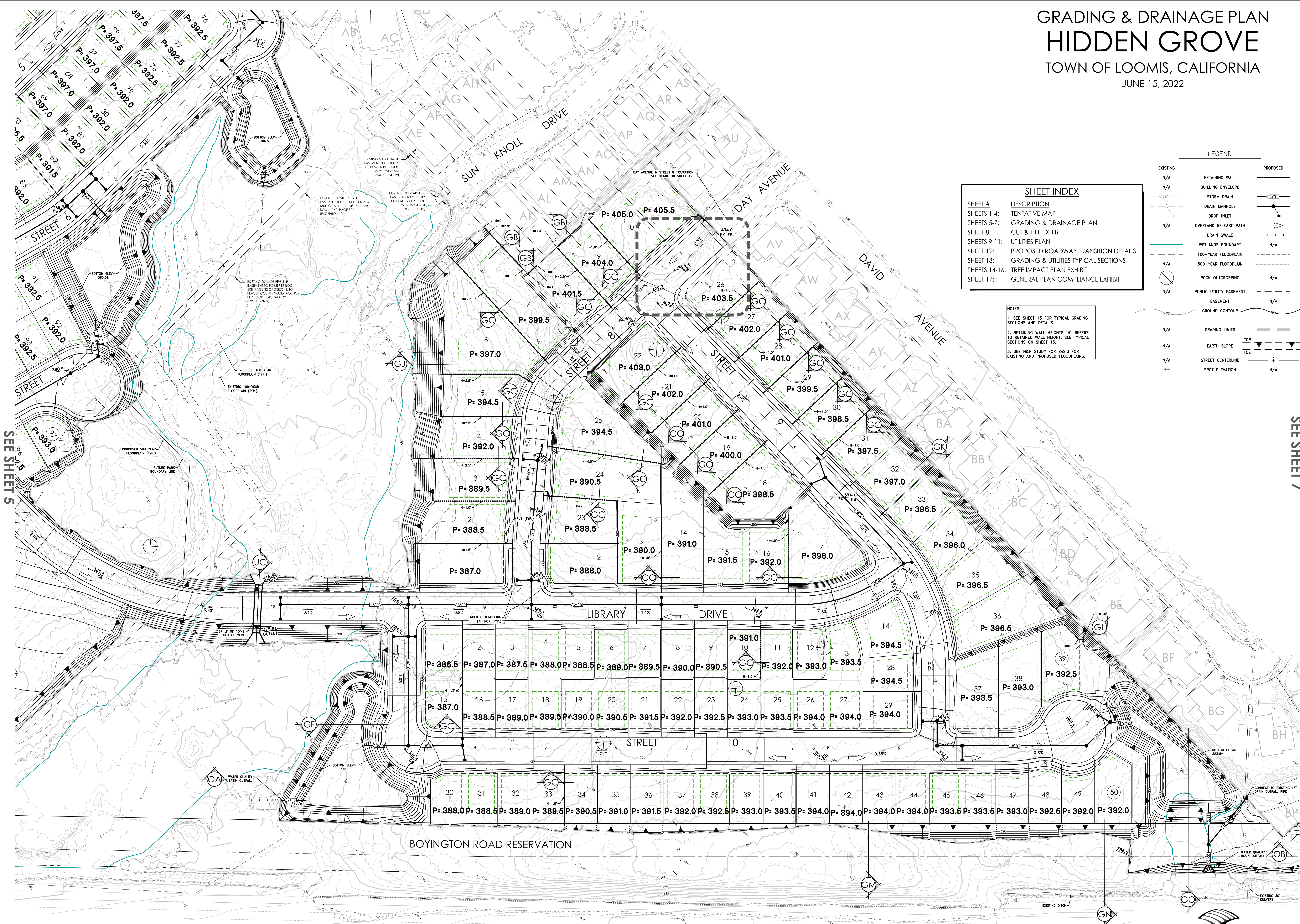
**WOOD RODGERS**  
 BUILDING RELATIONSHIPS ONE PROJECT AT A TIME  
 3301 C St. Bldg. 100-B Sacramento, CA 95816  
 Tel 916.341.7760 Fax 916.341.7767

SEE SHEET 6



# GRADING & DRAINAGE PLAN HIDDEN GROVE TOWN OF LOOMIS, CALIFORNIA

JUNE 15, 2022



### SHEET INDEX

SHEET #	DESCRIPTION
SHEETS 1-4:	TENTATIVE MAP
SHEETS 5-7:	GRADING & DRAINAGE PLAN
SHEET 8:	CUT & FILL EXHIBIT
SHEETS 9-11:	UTILITIES PLAN
SHEET 12:	PROPOSED ROADWAY TRANSITION DETAILS
SHEET 13:	GRADING & UTILITIES TYPICAL SECTIONS
SHEETS 14-16:	TREE IMPACT PLAN EXHIBIT
SHEET 17:	GENERAL PLAN COMPLIANCE EXHIBIT

**NOTES:**

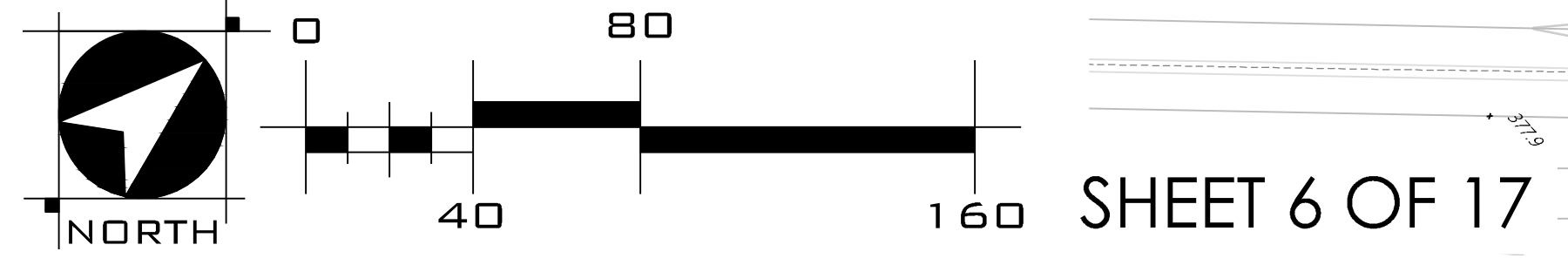
- SEE SHEET 13 FOR TYPICAL GRADING SECTIONS AND DETAILS.
- RETAINING WALL HEIGHTS "H" REFERS TO RETAINED WALL HEIGHT. SEE TYPICAL SECTIONS ON SHEET 13.
- SEE H&M STUDY FOR BASIS FOR EXISTING AND PROPOSED FLOODPLAINS.

### LEGEND

EXISTING	PROPOSED
N/A	RETAINING WALL
N/A	BUILDING ENVELOPE
— 2'-0"	STORM DRAIN
—	DRAIN MANHOLE
N/A	DROP INLET
—	OVERLAND RELEASE PATH
—	DRAIN SWALE
—	WETLANDS BOUNDARY
N/A	100-YEAR FLOODPLAIN
N/A	500-YEAR FLOODPLAIN
⊗	ROCK OUTCROPPING
—	PUBLIC UTILITY EASEMENT
—	EASEMENT
—	GROUND CONTOUR
N/A	GRADING LIMITS
N/A	EARTH SLOPE
N/A	STREET CENTERLINE
N/A	SPOT ELEVATION

SEE SHEET 5

SEE SHEET 7



**WOOD RODGERS**  
BUILDING RELATIONSHIPS ONE PROJECT AT A TIME  
3301 C St. Bldg. 100-B Sacramento, CA 95816  
Tel 916.341.7760 Fax 916.341.7767



