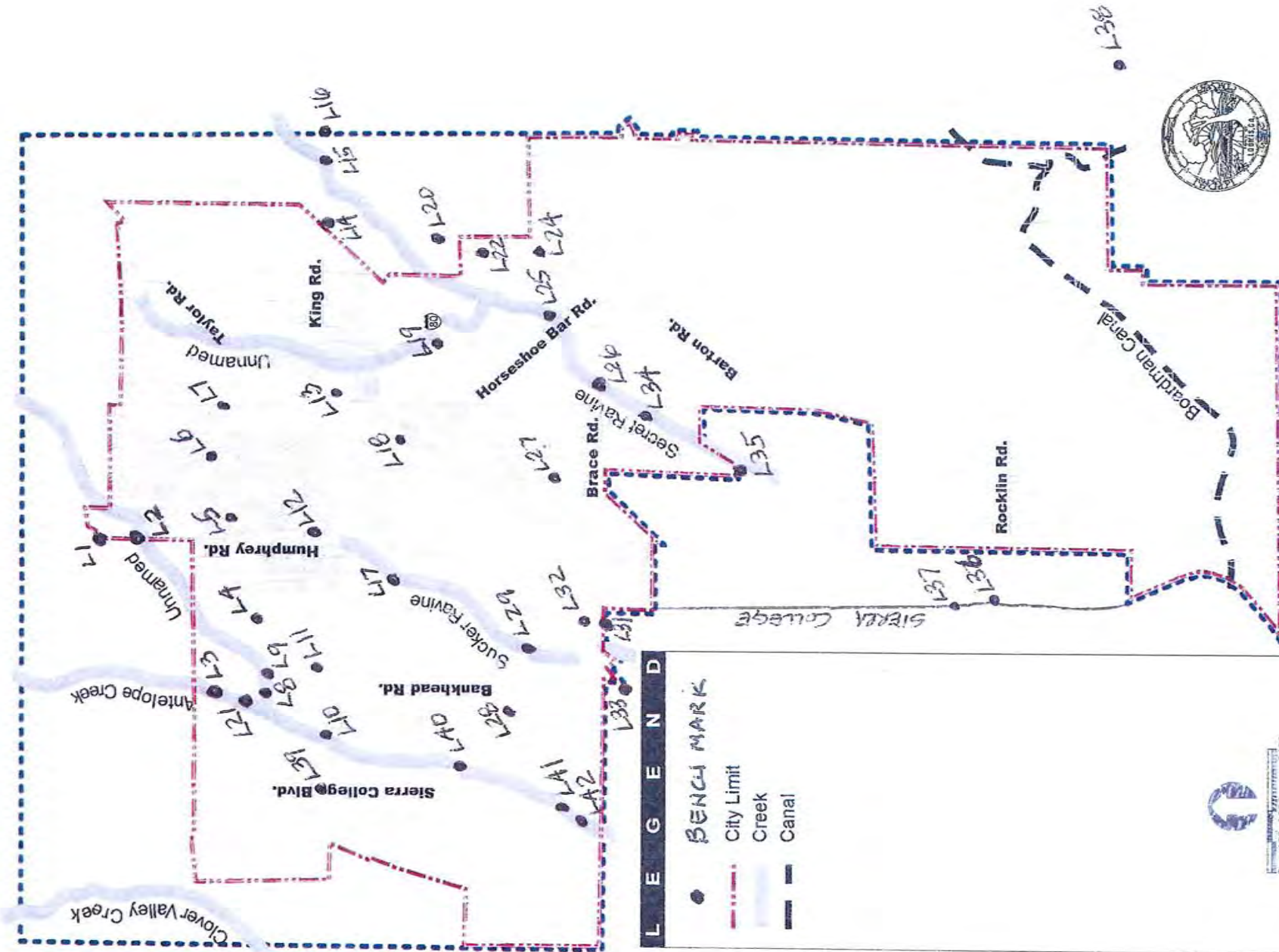


**TOWN
OF
LOOMIS**

BENCH MARKS

7/27/09



L E G E N D

- BENCH MARK
- - - City Limit
- Creek
- - - Canal



City of Loomis

BENCH MARKS

6/18/09

TOWN OF LOOMIS BENCH MARKS

LEGEND

RM = FEMA "Reference Mark" N.V.G.D. 1929 Datum

ROC = From Placer County Surveyor shown on Rocklin Quad Map, N.V.G.D. 1929 Datum.

L1 = Town of Loomis location number with discription and photo.

PH = I.D. photo number, date taken 6-13-2009

	<u>Bench Mark</u>	<u>Elevation</u>	<u>Description</u>
L1	RM 55 ROC-083 PH-108 Map: 416	378.46	PK with 1.5" metal disc stamped 471 in top of wingwall at SE corner bridge on the east side of Humphrey Rd., 0.13 mile +/- south of the interesection of Humphrey and Citrus Colony Rds.
L2	RM 57 ROC-082 PH-107 Map: 416	373.11	PK with 1.5" Metal disc stamped 470 in top at center of the east concrete headwall of culvert xing on the east side of Humphry Rd., 0.19 mile +/- north of the intersection of Humphrey Rd. and Arcadia Ave.
L3	RM 64 ROC-077 PH-104 Map: 416	347.85	Railroad spike with 1.5" metal disc stamped 465 in the SE face of a twin 14" live oak tree, 22' +/- west and 25' +/- south of the center of bridge xing creek to house address 3273 Barker Rd.
L4	RM 61 ROC-078 PH-106 Map: 416	351.17	PK with 1.5" metal disc stamped 466 in top of concrete bridge support at the NE corner of bridge on private drive to Hilltor's residence at 5040 No Name Ln. (drive is the west extension off No Name Ln.)
L5	RM 62 ROC-046 PH-109 Map: 416	369.74	PK with 1.5" metal disc stamped 431 in top back of sidewalk at a culvert xing on the north side of Sparas St., at the SE corner of concrete driveway to house address 5623 Sparas St.
L6	RM 63 ROC-047 PH-110 Map: 416	385.00	PK with 1.5" metal disc stamped 432 in top back of sidewalk at a culvert xing on the north side of Arcadia Ave., 150' +/- east of Woodbury Ct., between addresses 5925 and 5945 Arcadia Ave.
L7	PH-136 / 137 Map: 416	417.88	BM cap. 2" brass disc in monument box at centerline of Swetzer Rd., west 1/4 corner, Section 3.
L8	RM 60 ROC-075 PH-101 Map: 416	340.18	PK with 1.5" metal disc stamped 463 in top of a concrete bridge support at the NE corner of a bridge, on the north side of Barker Rd., being the second bridge north of the intersection of Barker and King Roads.
L9	RM 65 ROC-074 PH-100 Map: 416	342.68	PK with 1.5" metal disc stamped 462 in top of the SE end of a concrete wingwall at the SE Corner of a concrete bridge on the east side of Barker Rd., 0.21 mile +/- north of the intersection of Barker and King Roads.

L10 RM 83 ROC-072 PH-98 Map: 418	330.69	PK with 1.5" metal disc stamped 460 in top of a concrete wingwall at the NW corner of concrete bridge "#19 C 0056 Antelope creek" on the north side of King Rd., 0.12 mile +/- east of the Intersection of King Rd. and Sierra College Blvd .
L11 RM 66 ROC-073 PH-99 Map: 418	345.51	Top of a fire hydrant at the NE corner of the intersection of King Rd. and Barker Rd.
L12 RM 67 ROC-045 PH-105 Map: 418	357.17	PK with 1.5" metal disc stamped 430 in top at centerline of a concrete headwall on the north side of King Rd. at a culvert xing, 200' +/- east of the intersection of King and Humphrey Roads.
L13 RM ROC PH- Map 418	404.86	BM H566, reset 1975 USGS brass disc @ entrance to Loomis Elementary School Administration Building. Located in the concrete left of the entrance doors.
L14 ROC-011 PH-122 Map: 418	407.25	CAL TRANS BM# 19-172 brass cap stamped "California Division of Highway 19-172", located in the center of the south sidewalk of King Rd./ I-80 overcrossing 85' +/- west of east end of bridge.
L15 ROC-013 PH-123 Map: 418	387.73	Railroad spike set in telephone pole at north side of King Rd. just west of A/C Rd. that runs along along west side of Loomis City Park (Holsclaw Rd.), the northerly Park at north side King Rd. just east of I-80.
L16 RM 69 ROC-033 PH-124 Map: 418	380.32	PK with 1.5" metal disc stamped 418 in top of north end of west abutment of bridge crossing of Secret Ravine on the north side of King Rd.
L17 RM 70 ROC-044 PH-111 Map: 418	343.91	Top of fire hydrant on the north side of #429 Saunders Ave. 290' +/- east of culvert crossing, 250' +/- east of the intersection of Saunders Ave. and Wine Way.
L18 W-45 ROC-008 PH-112 / 113 / 114 Map: 418	398.60	Rocklin-Loomis Municipal Utility District Bldg., 186 ft. SW of SW curb of Horseshoe Bar Rd., 10.9 ft SE of SE curb of Taylor Rd., 7 ft. NE of center door, 0.6 ft. NE of NE side of 1st pillar NE of door, and 1 ft. +/- higher than sidewalk. Brass disc stamped W-45-399 1940.
L19 RM 71 ROC-087 PH-126 / 127 Map: 418	371.43	Chisled "X" in top west rim of sewer manhole, 6' north of the right-of-way fence on the north side of I-80, 75' +/- southwest of culvert xing, 0.14 mile +/- NE of Horseshoe Bar Rd. overpass. Values have not been reviewed or approved by Placer County. Reference town of Loomis #475.
L20 RM 72 ROC-032 PH-119 Map: 418	368.97	Railroad spike with 1.5" metal disc stamped 417 in NW face of JP#3757 at the SE side of Oak Tree Ln., located in front of house address 3675 Oak Tree Ln.
L21 ROC-076 PH-102 / 103 Map: 416	344.47	Below ground line. Railroad spike with 1.5" metal disc stamped 464 in the east face of joint pole #12, 40' +/- west of centerline of creek, 21' +/- south of driveway to house address 3333 Barker Rd.
L22 RM 76 ROC-031 PH-120 Map: 418	360.16	PK with 1.5" metal disc stamped 416 at SW corner concrete bridge at drainage crossing at Oak Tree Ln.

L23

L24	RM 77 ROC-030 PH-121 Map: 418	375.99	Top of the fire hydrant at the SE side of Horseshoe Bar Rd. opposite the intersection of Horseshoe Bar Rd. and Oak Tree Ln.
L25	ROC-029 PH-118 Map: 418	350.64	PK with 1.5" metal disc stamped 414 in top of the SW end of concrete wingwall at the SW corner bridge # 19C-162 on the south side of Horseshoe Bar Rd., at the crossing of Secret Ravine at Horseshoe Bar Rd.
L26	ROC-027 PH-117 Map: 418	338.59	PK with 1.5" metal disc stamped 412 at the NW footing of the most northwesterly granite pillar on the bridge #19C-136 on the north side of Brace Rd., 0.21 mile +/- east of I-80 Freeway.
L27	ROC-049 PH-125 Map: 418	340.70	PK with 1.5" metal disc stamped 434 in top back of sidewalk at the centerline of culvert xing on the east side of Stonegate Ct.
L28	ROC-125 PH-92 Map: 418	327.92	BM D12-V1. 1" round head bolt set in concrete mount 74' +/- of centerline Seirra College Blvd. +/- 0.2 mile north of Bankhead Rd. east of driveway @ gate.
L29	RM 75 ROC-043 PH-91 Map: 418	320.68	Railroad spike with 1.5" metal disc stamped 428 at the south face of light pole #1643 on the north side of Sierra College Blvd., on the west side of private driveway to house address 3901 Sierra College Blvd.
L30			
L31	RM 81 ROC-048 PH-90 Map: 418	325.50	PK with 1.5" metal disc stamped 433 in top of the SW corner of a 2' by 2' concrete base of a stop light at the SW corner of the intersection of Taylor Rd. and Sierra College Blvd.
L32	RM 82 ROC-085 PH-95 Map: 418	311.99	Railroad spike in SW face of switch pole #623 on the north side of Brace Rd., 120' west of culvert xing, 230' +/- east of the intersection of Brace Rd. and Taylor Rd. Values have not been reviewed or approved by Placer County.
L33	RM 73 ROC-005 PH-89 Map:418	308.36	PK with 1.5" metal disc stamped 426 in top of the southwesterly end of concrete headwall of a culvert inlet of the north side of Taylor Rd. +/- 0.4 mile west of Brace Rd.
L34	ROC-023 PH-116 Map: 418	325.96	PK with 1.5" metal disc stamped 408 in top of concrete footing at the NW corner of a wood bridge crossing to the house addresses 5859 and 5901 Grade Ln.
L35	ROC-022 PH-115 Map: 418	342.89	Top of a fire hydrant at the southerly end of Dias Ln., on the west side of Dias Ln., at the end of AC paving.
L36	RM 79 PH-140 / 141 Map: 418	341.89	The NW bolt on a traffic signal light stand for the signal light arm over Sierra College Blvd., at the NE corner of the intersection of Sierra College Blvd. and Rocklin Rd.

L37 RM 80 PH-128 / 129 Map: 418	348.58	Set railroad spike with 1.5" metal disc stamped 405, 2' above ground at west face of telephone pole, 15' +/- east of the east edge of Sierra College Blvd., 0.19 mile +/- north of the intersection of Sierra College Blvd. and Rocklin Rd.
L38 ROC-141 PH-138 / 139 Map: 481	476.84	E13-V12 round head bolt set in concrete monument west side Laird Rd., +/- 175' south of intersection on Laird Rd. and Wells Ave. +/- 40' west of centerline Laird Rd.
L39 ROC-115 PH-132 / 133 Map: 414	347.17	BM# D12-V2. 1" round head bolt set in concrete monument 40' +/- left of NW corner King Rd. and Sierra College Blvd.
L40 RM 41 ROC-071 PH-93 Map: 414	314.39	PK with 1.5" metal disc stamped 459 in top at the south end of a concrete headwall at the SE corner of a concrete box culvert on the SE side of Sierra College Blvd. at the xing of Antelope Creek.
L41 RM 43 ROC-070 PH-96 Map: 414	297.23	PK with 1.5" metal disc stamped 458 in top center of a concrete headwall over the centerline of Antelope Creek at an inlet on the east side of Delmar Ave.
L42 RM 45 ROC-069 PH-97 Map: 414	288.82	PK with 1.5" metal disc stamped 457 in top at the SW end of a concrete wingwall of a dam on the SE side of Antelope Creek on the NE side of a bridge xing to house address 3994 Delmar Ave.

L1

378.46

PK with 1.5" metal disc stamped 471 in top of wing wall at SE corner bridge on the east side of Humphrey Rd., 0.13 mile +/- south of the intersection of Humphrey and Citrus Colony Rd.



L2

373.11

PK with 1.5" Metal disc stamped 470 in top at center of the east concrete headwall of culvert crossing on the east side of Humphrey Rd., 0.19 mile +/- north of the intersection of Humphrey Rd. and Arcadia Ave.



L3

347.85

Railroad spike with 1.5" metal disc stamped 465 in the SE face of a twin 14" live oak tree, 22' +/- west and 25' +/- south of the center of bridge crossing creek to house address 3273 Barker Rd.



L4

351.17

PK with 1.5" metal disc stamped 466 in top of concrete bridge support at the NE corner of bridge on private drive to Hilton's residence at 5040 No Name Lane. (drive is the west extension off No Name Lane.)



L5

369.74

PK with 1.5" metal disc stamped 431 in top back of sidewalk at a culvert crossing on the north side of Sparas St., at the SE corner of concrete driveway to house address 5623 Sparas St.



L6

385.00

PK with 1.5" metal disc stamped 432 in top back of sidewalk at a culvert crossing on the north side of Arcadia Ave., 150' +/- east of Woodbury Ct., between addresses 5925 and 5945 Arcadia Ave.



L7

417.88

BM cap. 2" brass disc in monument box at centerline of Swetzer Rd., west 1/4 corner, Section 3.



L8

340.18

PK with 1.5" metal disc stamped 463 in top of a concrete bridge support at the NE corner of a bridge, on the north side of Barker Rd., being the second bridge north of the intersection of Barker and King Roads.



L9

342.68

PK with 1.5" metal disc stamped 462 in top of the SE end of a concrete wing wall at the SE Corner of a concrete bridge on the east side of Barker Rd., 0.21 mile +/- north of the intersection of Barker and King Roads.



L10

330.69

PK with 1.5" metal disc stamped 460 in top of a concrete wing wall at the NW corner of concrete bridge "#19 C 0056 Antelope creek," on the north side of King Rd., 0.12 mile +/- east of the Intersection of King Rd. and Sierra College Blvd .



L11

345.51

Top of a fire hydrant at the NE corner of the intersection
of King Rd. and Barker Rd.



L12

357.17

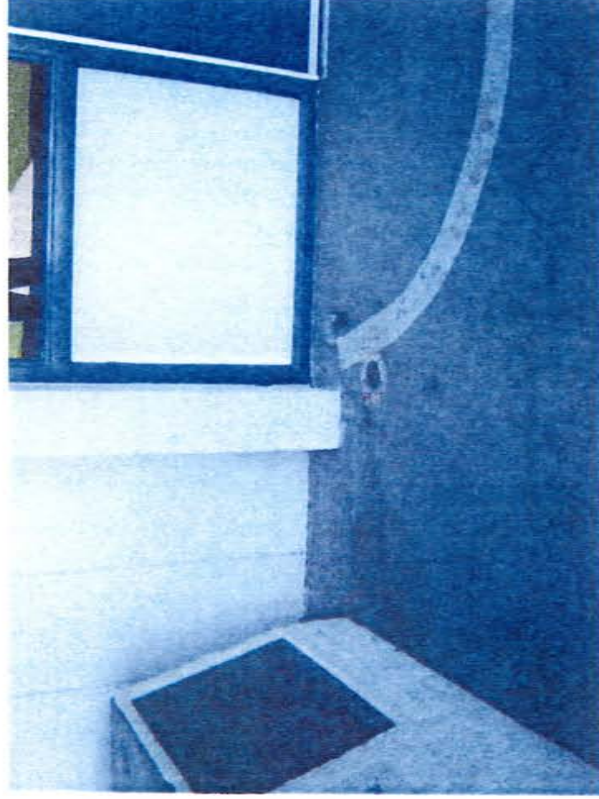
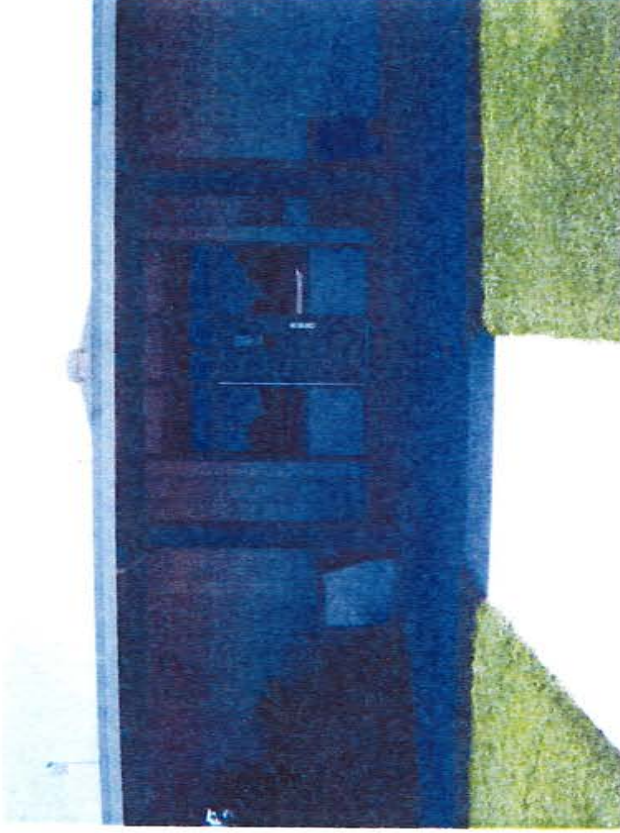
PK with 1.5" metal disc stamped 430 in top at centerline of a concrete headwall on the north side of King Rd. at a culvert crossing, 200' +/- east of the intersection of King and Humphrey Roads.



L13

404.86

BM H566, reset 1975 USGS brass disc @ entrance to Loomis Elementary School Administration Building. Located in the concrete left of the entrance doors.



L14

407.25

CAL TRANS BM# 19-172 brass cap stamped "California Division of Highway 19-172", located in the center of the south sidewalk of King Rd./ I-80 overcrossing 85' +/- west of east end of bridge.



06.11.2009

L15

387.73

Railroad spike set in telephone pole at north side of King Rd. just west of A/C Rd. that runs along west side of Loomis Park (Holsclaw Rd.), the northerly Park at north side King Rd. just east of I-80.



L16

380.32

PK with 1.5" metal disc stamped 418 in top of north end of west abutment of bridge crossing of Secret Ravine on the north side of King Rd.



L17

343.91

Top of fire hydrant on the north side of #429 Saunders Ave.
290' +/- east of culvert crossing, 250' +/- east of the intersection
of Saunders Ave. and Wine Way.



L18

398.60

Loomis Town Hall Bldg., 186 ft. SW of SW curb of Horseshoe Bar Rd., 10.9 ft. SE of SE curb of Taylor Rd., 7 ft. NE of center door, 0.6 ft. NE of NE side of 1st pillar NE of door, and 1 ft. +/- higher than sidewalk. Brass disc stamped W-45-399 1940.



L19

371.43

Chiseled "X" in top west rim of sewer manhole, 6' north of the right-of-way fence on the north side of I-80, 75' +/- southwest of culvert crossing, 0.14 mile +/- NE of Horseshoe Bar Rd. Values have not been reviewed or approved by Placer County. Reference town of Loomis #475.



L20

368.97

Railroad spike with 1.5" metal disc stamped 417 in NW face of JP#3757 at the SE side of Oak Tree Lane., located in front of house address 3675 Oak Tree Lane.



L21

344.47

Below ground line. Railroad spike with 1.5" metal disc stamped 464 in the east face of joint pole #12, 40' +/- west of centerline of creek, 21' +/- south of driveway to house address 3333 Barker Rd.



L22

360.16

PK with 1.5" metal disc stamped 416 at SW corner concrete bridge at drainage crossing at Oak Tree Lane.



L23

L24

375.99

Top of the fire hydrant at the SE side of Horseshoe Bar Rd. opposite the intersection of Horseshoe Bar Rd. and Oak Tree Lane.



L25

350.64

PK with 1.5" metal disc stamped 414 in top of the SW^E end of concrete wing wall at the SW^E corner bridge # 19C-162 on the south side of Horseshoe Bar Rd., at the crossing of Secret Ravine at Horseshoe Bar Rd.



L26

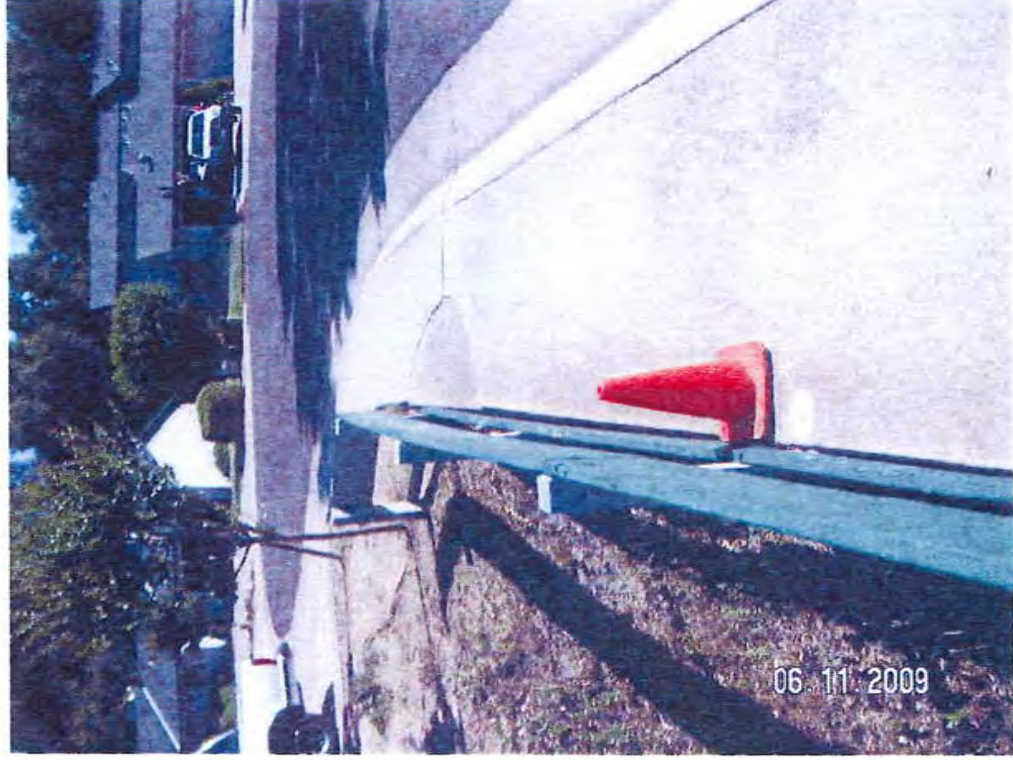
338.59

PK with 1.5" metal disc stamped 412 at the NW footing of the most northwesterly granite pillar on the bridge #19C-136 on the north side of Brace Rd., 0.21 mile +/- east of I-80 Freeway.



L27

340.70 PK with 1.5" metal disc stamped 434 in top back of sidewalk at the centerline of culvert crossing on the east side of Stonegate Ct.



L28

327.92

BM D12-V1. 1" round head bolt set in concrete mount 74'
+/- of centerline Sierra College Blvd. +/- 0.2 mile north of
Bankhead Rd. east of driveway @ gate.



L29

320.68

Railroad spike with 1.5" metal disc stamped 428 at the south face of light pole #1643 on the north side of Sierra College Blvd., on the west side of private driveway to house address 3901 Sierra College Blvd.



L30

L31

325.50

PK with 1.5" metal disc stamped 433 in top of the SW corner of a 2' by 2' concrete base of a stop light at the SW corner of the intersection of Taylor Rd. and Sierra College Blvd.



L32

311.99

Railroad spike in SW face of switch pole #623 on the north side of Brace Rd., 120' west of culvert crossing, 230' +/- east of the intersection of Brace Rd. and Taylor Rd. Values have not been reviewed or approved by Placer County.



L33

308.36

Pk with 1.5" metal disc stamped 426 in top of the southwesterly end of concrete headwall of a culvert inlet of the north side of Taylor Rd. +/- 0.4 mile west of Brace Rd.



L34

325.96

PK with 1.5" metal disc stamped 408 in top of concrete footing at the NW corner of a wood bridge crossing to the house addresses 5859 and 5901 Grade Lane.



L35

342.89

Top of a fire hydrant at the southerly end of Dias Lane, on the west side of Dias Lane, at the end of AC paving.



L36

341.89

The NW bolt on a traffic signal light stand for the signal light arm over Sierra College Blvd., at the NE corner of the intersection of Sierra College Blvd. and Rocklin Rd.



L37

348.58

Set railroad spike with 1.5" metal disc stamped 405, 2' above ground at west face of telephone pole, 15' +/- east of the east edge of Sierra College Blvd., 0.19 mile +/- north of the intersection of Sierra College Blvd. and Rocklin Rd.



L38

476.84

E13-V12 round head bolt set in concrete monument west side Laird Rd., +/- 175' south of intersection on Laird Rd. and Wells Ave. +/- 40' west of centerline Laird Rd.



L39

347.17

BM# D12-V2. 1" round head bolt set in concrete monument
40' +/- left of NW corner King Rd. and Sierra College Blvd.



L40

314.39

PK with 1.5" metal disc stamped 459 in top at the south end of a concrete headwall at the SE corner of a concrete box culvert on the SE side of Sierra College Blvd. at the crossing of Antelope Creek.



L41

297.23

PK with 1.5" metal disc stamped 458 in top center of a concrete headwall over the centerline of Antelope Creek at an inlet on the east side of Delmar Ave.



L42

288.82

PK with 1.5" metal disc stamped 457 in top at the SW end of a concrete wing wall of a dam on the SE side of Antelope Creek on the NE side of a bridge crossing to house address 3994 Delmar Ave.

