



# Sunrise Loomis Park

---

**PLAYGROUND REVITALIZATION**

**DESIGN UPDATE MEETING & WORKSHOP**

# Introduction

## MERRILL BUCK

Engineer

Town of Loomis

[townengineer@loomis.ca.gov](mailto:townengineer@loomis.ca.gov)

(916) 824-1518

## DYLAN BUTERBAUGH

Landscape Architect

AEON Landscape Architecture, Inc.

[dylan@aeonlandscape.com](mailto:dylan@aeonlandscape.com)

(707) 469-3900

**Please fill out the sign in sheet, if you'd like to receive future notifications about the project.**

# Project Overview

## Opportunity to upgrade the 5-12 Play Structure

- Play Structure at End of Useable Life
- Can Replace Using State Grant Funding Allocation
- Increase Play Value/Capacity (Multi-sensory, Varied Experiences)
- Address Drainage and Accessibility Issues
- Opportunity to expand scope to include 2-5 Play Area (although this will require a budget increase).



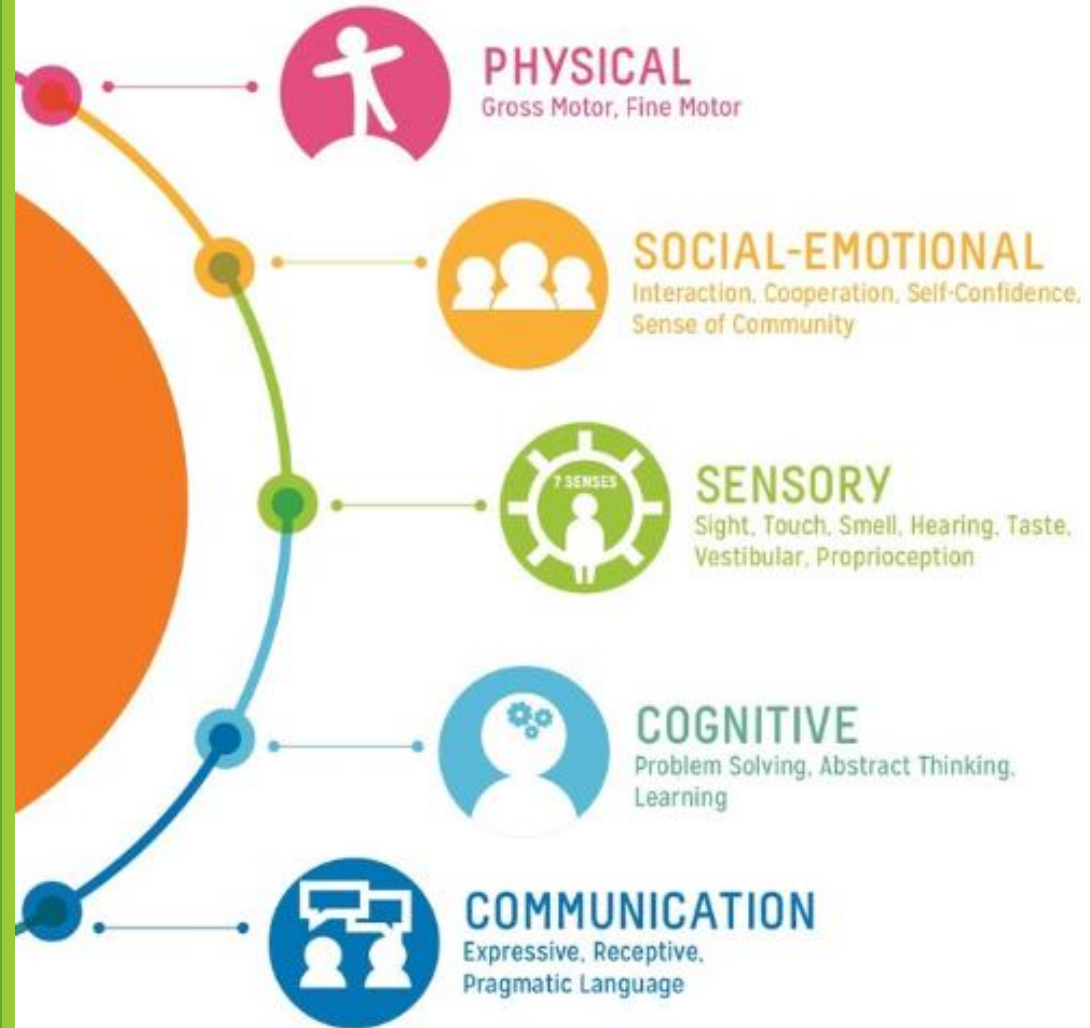
# California Prop 68 Grant



## State Bond for Parks, Natural Resources and Water Infrastructure

- \$177,952 in grant funding allocated to Town plus \$44,488 match
- Eligible projects include playgrounds, trails, picnic areas, and community gardens
- Approved Town Application includes:
  - New play structure
  - New Picnic Facilities
  - New Playground Fiber
  - Remove and replace damaged pathways (in progress)
- Project must be completed by December 31, 2023

# Inclusive Play



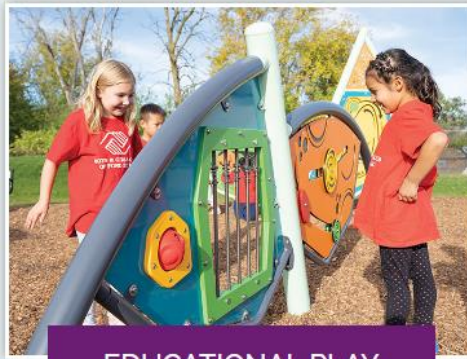


# Play Variety





# Play Variety



EDUCATIONAL PLAY



MUSICAL PLAY



ELECTRONIC PLAY



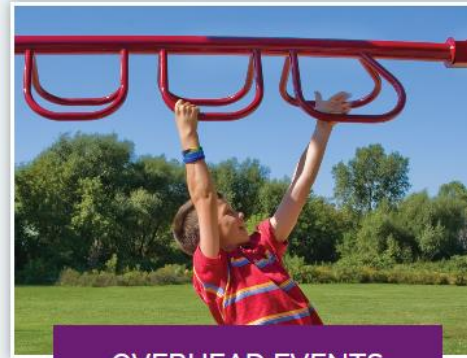
MOTION PLAY



SWINGS



CLIMBERS



OVERHEAD EVENTS



SLIDES



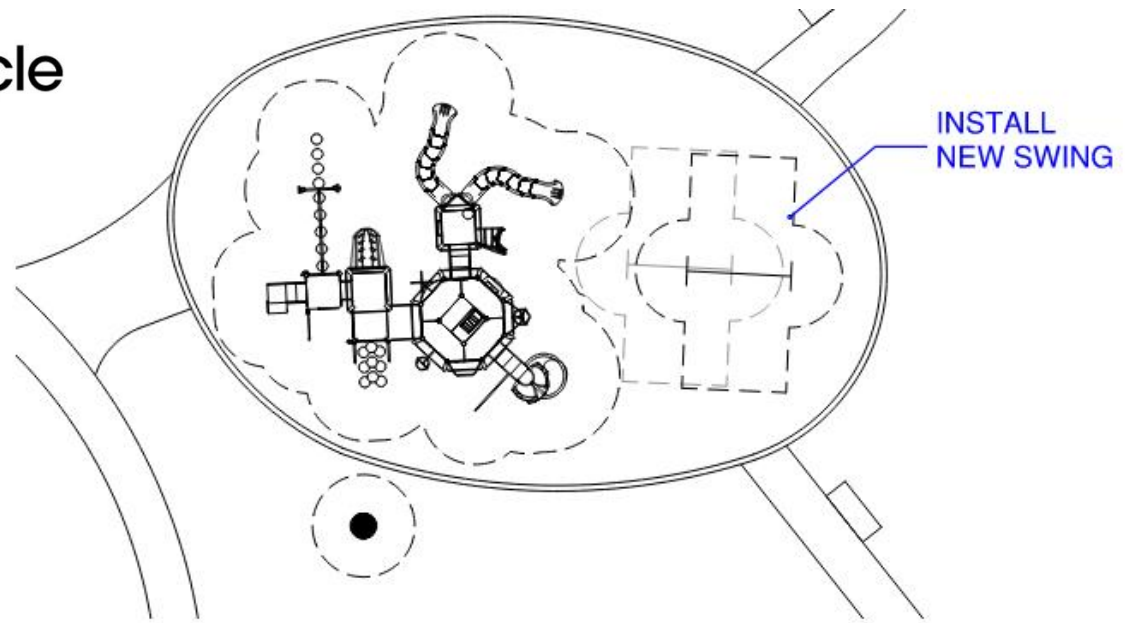
PLAYGROUND FUNDAMENTALS



# Existing 5-12 Playground







## Mega Tower Structure

Model: 714-S637

Approx. \$175,000 Installed

Elevated Play Activities: 16

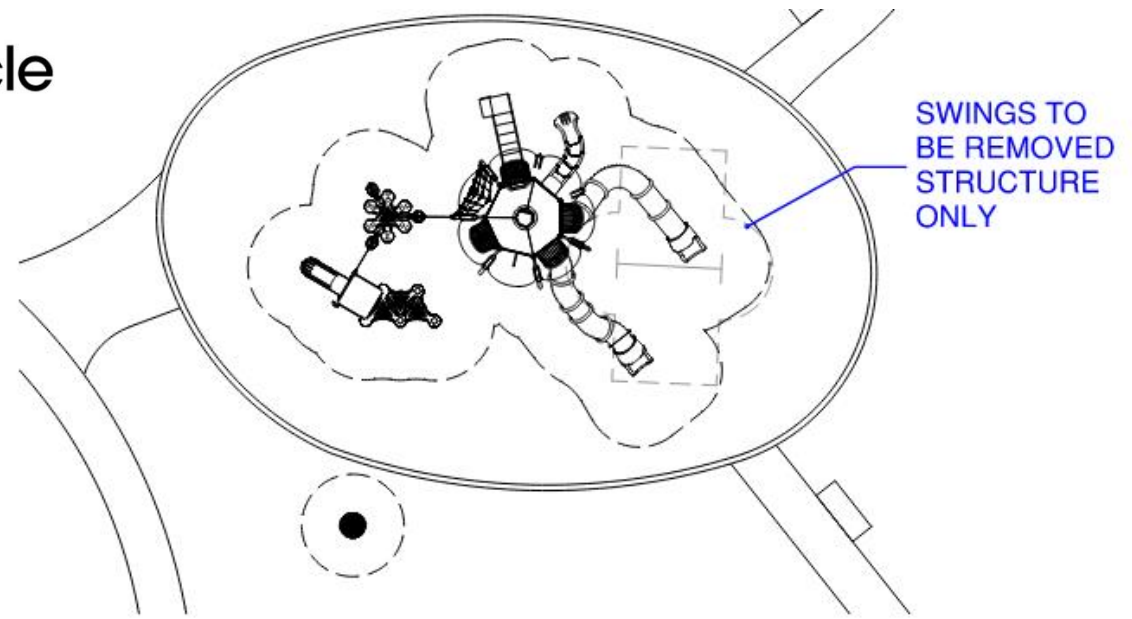
Ground Level Play Activities: 5



Approx. \$3,200 Installed



# 5-12 Playground Options



## Mega Tower Structure

Model: 714-S462

Approx. \$165,000 Installed

Elevated Play Activities: 12

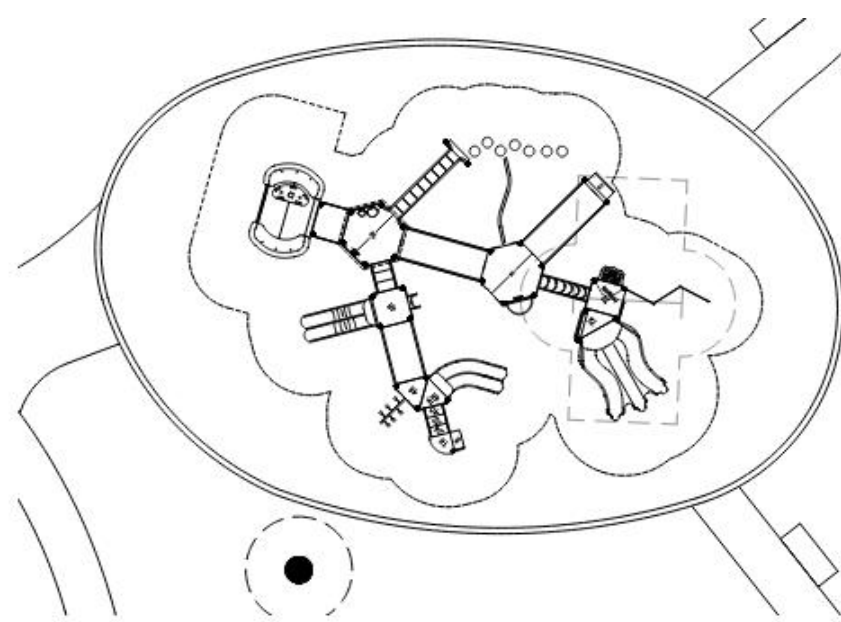
Ground Level Play Activities: 6



May be able to customize to fit a swingset into this option.

5-12  
Playground  
Options





## Playbooster

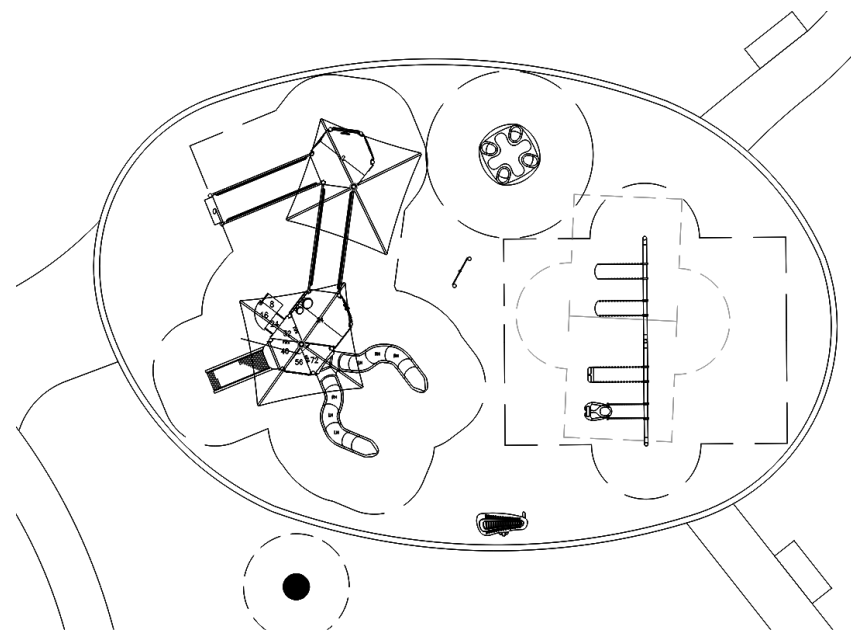
Approx. \$140,000 Installed

**Elevated Play Activities: 20**

**Accessible Ground Level  
or Elevated Play Activities: 10**



# 5-12 Playground Options



## Playbooster

Approx. \$170,000 Installed



**Elevated Play Activities: 10**

**Ground Level Play Activities: 6**

**Elevated Play Activities Accessible by  
Ramp or Transfer Station: 14**



# 2-5 Playground Considerations

## Option to Address 2-5 Playground

- At end of life, also in need of replacement.
- Same design considerations as the 5-12 Play Equipment.
- Replacement could allow matching the selected theme/colors of 5-12 playground.
- Additional replacement cost approximately \$100,000.
- Currently unfunded, would have to be authorized by Council.



# 2-5 Playground Considerations





Questions or Comments?

# Timeline and Next Steps

## Timeline

- May 16th: Community Meeting / Workshop
- May 30th: Follow-Up Playground Design Presentation (If needed)
- June 2023: Council Meeting – Approve Project Scope and Advertise For Bid
- July 2023: Award Construction Contract
- August 2023: Begin Construction
- November 2023: Construction Complete



# Thank You!

---

**PLAYGROUND REVITALIZATION**  
**SUNRISE LOOMIS PARK**