



Staff Report August 8, 2023

TO: Honorable Mayor and Members of the Town Council
FROM: Merrill Buck, Town Engineer
RE: Receive a Presentation on the Loomis Welcome Sign Project and Appropriate Funds in the Amount of \$55,000 from the General Fund Capital Reserves

Recommendation

Staff recommends that the Town Council receive a presentation by Ken Teichmann of Solace Graphics on the Town of Loomis Welcome Sign Project and adopt a resolution appropriating \$55,000 to fund the project, from the General Fund Capital Reserves (Fund 110).

Issue Statement and Discussion

The Welcome Sign Project was started back in 2016 when the Town hired Coastland Civil Engineering to design a sign structure that could be placed on the northeast corner of Sierra College Boulevard and Taylor Road (Attachment B), within the Union Pacific Railroad (UPRR) right of way. The UPRR agreed to the placement of this sign under the terms of a lease agreement which requires annual payments in the amount of \$250 for the use of their right of way.

In March 2017, the Town executed the lease agreement, and it is unclear why the project was not implemented at that time. It could be that while the plans were finalized for a structure, there was still more work to be done in designing and gaining approval for the interior "artwork and messaging" portion of the sign.

In December 2022, there was renewed interest in implementing the project, The plans for the sign structure were revised by Coastland to bring them up to current California Building Code standards, and the project was advertised for bids. The scope of work consisted of building a sign structure, with concrete footings, to the 14-foot-long by 10-foot-high dimensions approved under the lease agreement.

Concurrent with finalizing the sign structure portion of the project, the Chamber of Commerce and Town staff met as part of an Economic Development Committee with Ken Teichmann of Solace Graphics to discuss design options for graphics, lettering, and lighting that would make up the interior portion of the sign. The final recommendation from this committee is included with this report and will be presented as a power point during the meeting (Attachment C).

On July 18, 2023, a total of four bids were received for the sign structure portion of the work, as summarized below:

<u>Bidder</u>	<u>Bid Amount</u>
1. JS Construction	\$38,000.00
2. Paine Construction	\$39,999.00
3. Kingsley Builders	\$42,625.00
4. Galt Sign & Screenprinting	\$48,643.91
Engineer's Estimate	\$28,500.00

The low bidder, JS Construction from Palo Cedro, California, has been licensed and performing similar work since 2019. They have a current and active Class B General Contractor's License, as required to perform the work, they are registered with the Department of Industrial Relations, and they are deemed a responsible bidder under criteria defined in the California Public Contract Code.

A project appropriation of \$55,000 will be needed to award contracts to JS Construction in the amount of \$38,000 to build the sign structure and Solace Graphics in the amount of \$12,300 to design and construct the interior portion of sign. This appropriation also includes a 10% contingency as an allowance for any unforeseen items of work. These contracts are within the Town Manager's expenditure authority to award, following the recommended project appropriation.

It is expected that with the award of the above referenced contracts, work can begin by the end of August and be completed by the end of the year.

CEQA Requirements

The proposed work is Categorically Exempt from the provisions of the California Environmental Quality Act pursuant to CEQA Guidelines Section 15303, New Construction of Small Structures.

Financial and/or Policy Implications

There is currently no budget established for the Welcome Sign Project, as it was not included in the FY 2022-23 / FY 2023-24 Capital Improvements Program. It is therefore recommended that \$55,000 be appropriated from the Town's General Fund Capital Reserves (Fund 110) to fund the Welcome Sign Project. Sufficient funds are available in Fund 110 for the recommended appropriation.

Attachment

- A. Resolution
- B. Location Map
- C. Presentation Slides

TOWN OF LOOMIS

RESOLUTION NO. 23 - _____

**A RESOLUTION OF THE TOWN COUNCIL OF THE TOWN OF LOOMIS
APPROPRIATING \$55,000 TO FUND THE WELCOME SIGN PROJECT
FROM THE GENERAL FUND CAPITAL RESERVES**

WHEREAS, the Town is proposing to construct a welcome sign in the Union Pacific Railroad (UPRR) right of way, at the northeast corner of Sierra College Boulevard and Taylor Road; and

WHEREAS, a license agreement approving the construction of the welcome sign in the UPRR right of way was authorized by the Town Council in March 2017; and

WHEREAS, two contracts are proposed to construct the welcome sign, one from JS Construction in the amount of \$38,000 to construct the sign structure, and one from Solace Graphics in the amount of \$12,300 to design and construct the interior portion of sign; and

WHEREAS, in order to award these contracts along with a 10% contingency as an allowance for unforeseen work, a project appropriation in the amount of \$55,000 is needed; and

WHEREAS, it is recommended that \$55,000 be appropriated to the Welcome Sign Project from the Town's General Fund Capital Reserves (Fund 110); and

WHEREAS, there are sufficient funds in the General Fund Capital Reserves for the requested appropriation.

NOW, THEREFORE, BE IT RESOLVED that the Town Council of the Town of Loomis hereby appropriates \$55,000 to fund the Welcome Sign Project, from the General Fund Capital Reserves (Fund 110).

PASSED AND ADOPTED this 8th day of August 2023 by the following vote:

AYES:
NOES:
ABSENT:
ABSTAINED:

Mayor

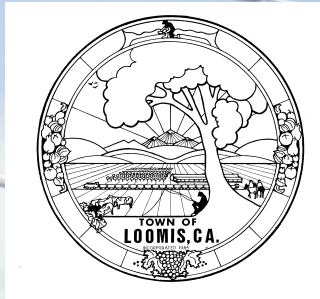
ATTEST:

Deputy Town Clerk

Attachment B

**Town of Loomis
Welcome Sign Project
Location Map**





Item 11 Attachment C

Loomis Welcome Sign

August 8, 2023

Presented by
Solace Graphics

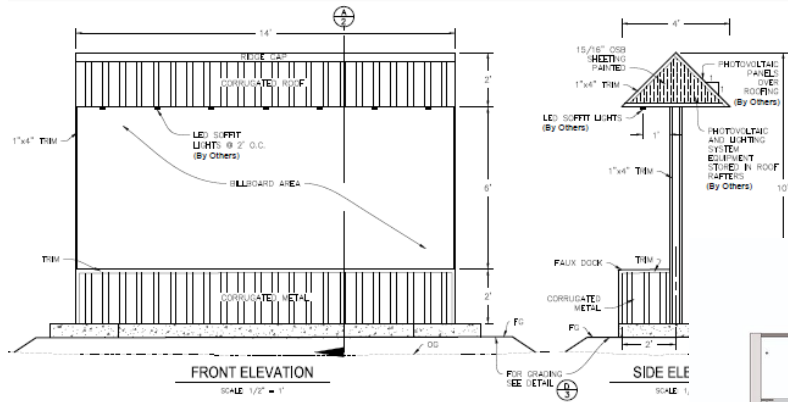


Lease Agreement with
Union Pacific Railroad



DISCOVER LOOMIS

Artwork Developed under Economic
Development Committee Collaboration:
Chamber of Commerce and Town Staff



Project in Two Phases:

- Structure
- Interior Artwork



Mounting Options



Plain Mount

Letters and logos are supplied with no mounting holes or hardware. Note: Most metal finishes do require some processing holes on letters backs - even with Plain mounts



Stud Mount

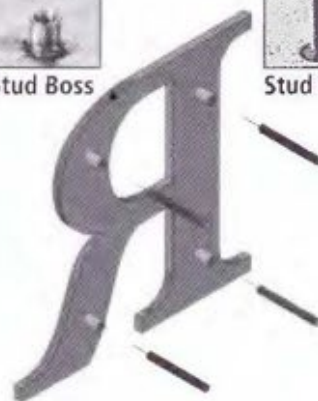
Backs of letters and logos, at least 1/4" thick, are drilled and tapped to receive threaded studs, for mounting to wall. Optional alignment for brick, block or rails.



Stud Boss



Stud Weld



Welded Stud Mount

Backs of 1/8" thick letters and logos are supplied with welded stud bosses (to receive studs) or 1" long welded studs, for mounting to wall.



Single Rail Mount

Add 35% to brushed letter price. Includes one flat 1/4" painted rail. Letters pre-assembled to rail. Typical with 4" - 8" letters. C-channel and anodized finish optional.

FL48

Solar Sign Light System

Supplied with 3 to 4 LED Light Bars



- Sold as a complete lighting system with all components necessary for a typical installation.
- Supplied with your choice of between three and four LED light bars. Additional bars can be added.
- Light bars can be used for internal or external illumination of signs.
- Illumination period can be designed subject to project requirements.
- Typical luminaire options are 5 Watts, or 10 Watts.
- Solar panel power is calculated based on quantity of light fixtures, luminaire power, installation location, and illumination time.
- Necessary battery capacity is based on desired illumination time.
- Refer to our website, or contact our sales team for solar panel and battery sizing requirements.



*SUBJECT TO OUR TERMS & CONDITIONS AND RETURN POLICY

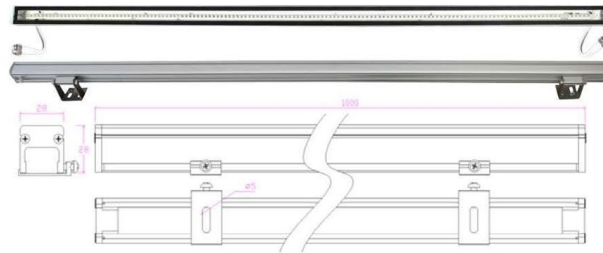
Lowest Price Guarantee Worldwide Shipping 10 Year System Warranty 20 Year Panel Warranty Lifetime Tech Support

0972040012

FL48

Solar Sign Light System

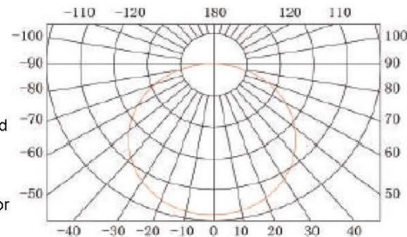
Supplied with 3 to 4 LED Light Bars



Specifications			
Dimensions	1" x 1" x 39"	Weather Rating	IP67
Voltage	24V DC	Color Temperature	5000K – 5500K
Wattage	10 Watts	Operating Temperature	-12°F to 120°F
Lumens	900 lm	Beam Angle	120°
CRI:	>80	Construction	Aluminum & Glass

Light Bar Details

- Each light bar can externally illuminate a sign up to 10' x 10'.
- Best results require the light to be mounted between 2' to 6' from the face of the sign.
- Light cable routes back to battery enclosure, for connection to charge controller.
- Cable length between light fixture and battery enclosure is 20'.
- Extension cables available upon request.
- Light fixture support brackets allow for 180° angle adjustment
- Support brackets can be moved and fixed to any position along the back of the light fixture.



*SUBJECT TO OUR TERMS & CONDITIONS AND RETURN POLICY

Lowest Price Guarantee Worldwide Shipping 10 Year System Warranty 20 Year Panel Warranty Lifetime Tech Support

0972040012

XP08 Solar Commercial Light String / Christmas Light System



- Sold as a complete lighting system with all components necessary for a typical installation.
- Illumination period can be designed subject to project requirements.
- Each 104 ft light string consists of 300 LEDs.
- Up to 8 light strings can be supplied with each system.
- Up to two light strings can be connected to each other.
- Solar panel power is calculated based on quantity of light strings, installation location, and illumination time.
- Refer to our website, or contact our sales team for solar panel and battery sizing requirements.



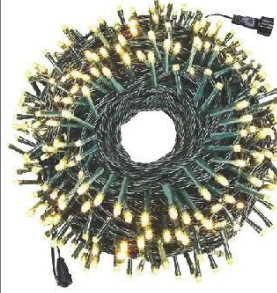
Worldwide Shipping Lowest Price Guarantee 10 Year System Warranty 20 Year Panel Warranty Lifetime Tech Support



*SUBJECT TO OUR TERMS & CONDITIONS, AND RETURN POLICY

09X020102

XP08 Solar Commercial Light String / Christmas Light System

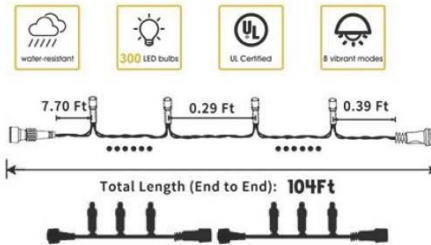


This is a commercial grade light string / christmas light system, supplied with the necessary solar equipment to allow for reliable illumination, even during the winter months. The system includes the necessary equipment such as solar panel, batteries, charge controller, weatherproof battery enclosure, and light strings.

Up to eight light strings can be added to a system. Light strings can be connected to the end of each other, however we recommend connecting no more than two light strings together.

Each light string is supplied with a 20' lead in cable that routes back of the battery enclosure.

- Each light string length is 104 ft
- Each light string is fitted with 300 LEDs
- Up to 8 light strings can be connected to a system
- LEDs are light mode is "steady on"
- 3000K color temperature supplied as standard. 5000K available upon request.
- Illumination times include dusk to dawn, up to 8 hours, or any other desired illumination time.
- Solar panel and battery sizing is based on quantity of LED light strings, desired illumination time, and installation location.



Worldwide Shipping Lowest Price Guarantee 10 Year System Warranty 20 Year Panel Warranty Lifetime Tech Support

*SUBJECT TO OUR TERMS & CONDITIONS, AND RETURN POLICY

09X020102

Thank You

