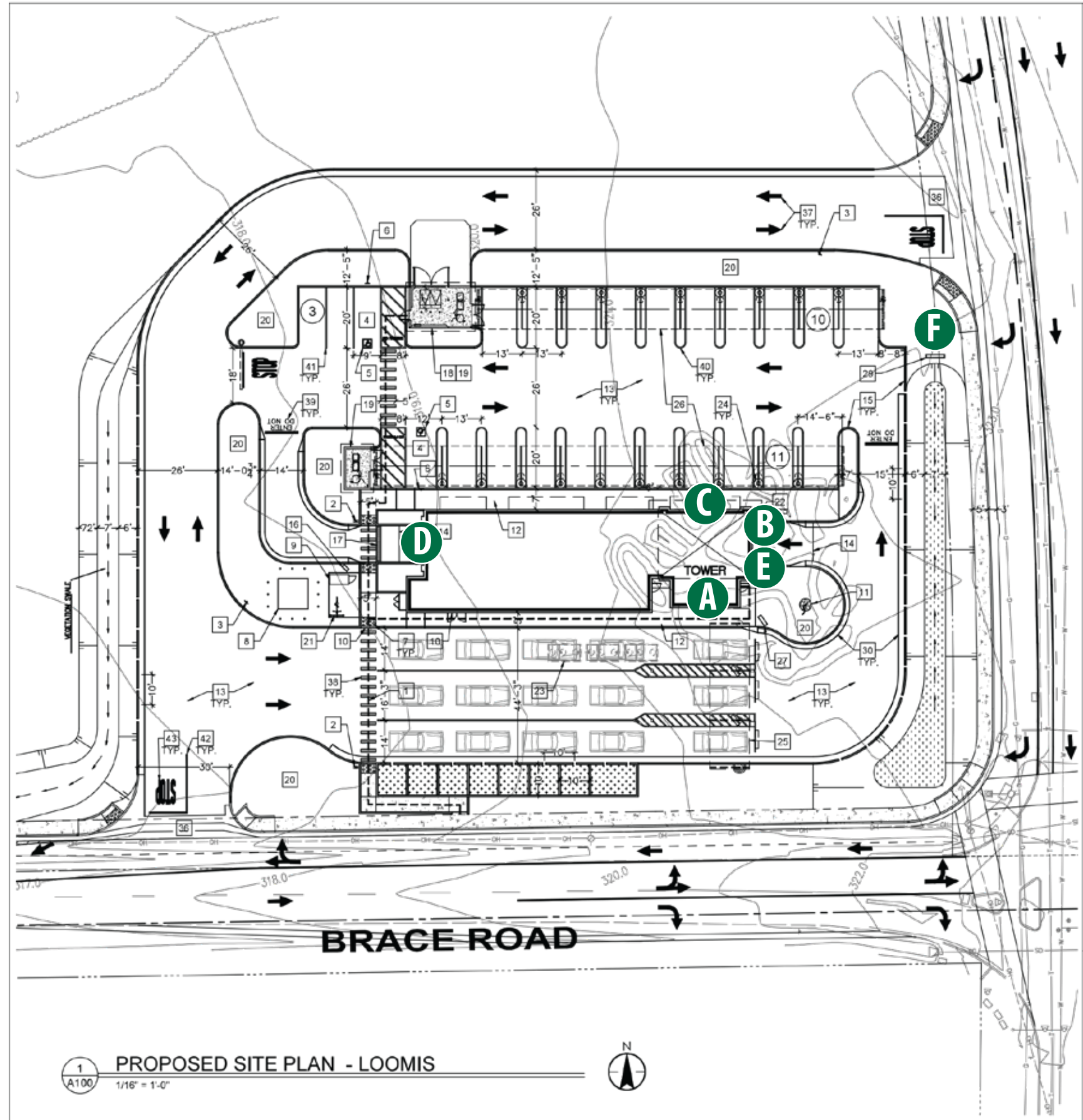


Quick Quack | Loomis, CA

NOTE: Renderings below utilize sample dimensions.



FAIRMONT
SIGN COMPANY

3750 East Outer Drive
Detroit, MI 48234
t: 313.368.4000 f: 313.368.9335
www.fairmontsign.com

Client:



Quick Quack Car Wash #6-066
Sierra Collage Blvd & Brace Rd
Loomis, CA

Date:

1/8/20

File:

Accounts/Misc/Quick Quack/Elev/
Loomis, CA

Designer:

RNB

Scale:

NA

Job#

00000

Sheet#

1 of 9

Revision #

1

Date:

4-24-23

Revision Description:

Customer
Approval:

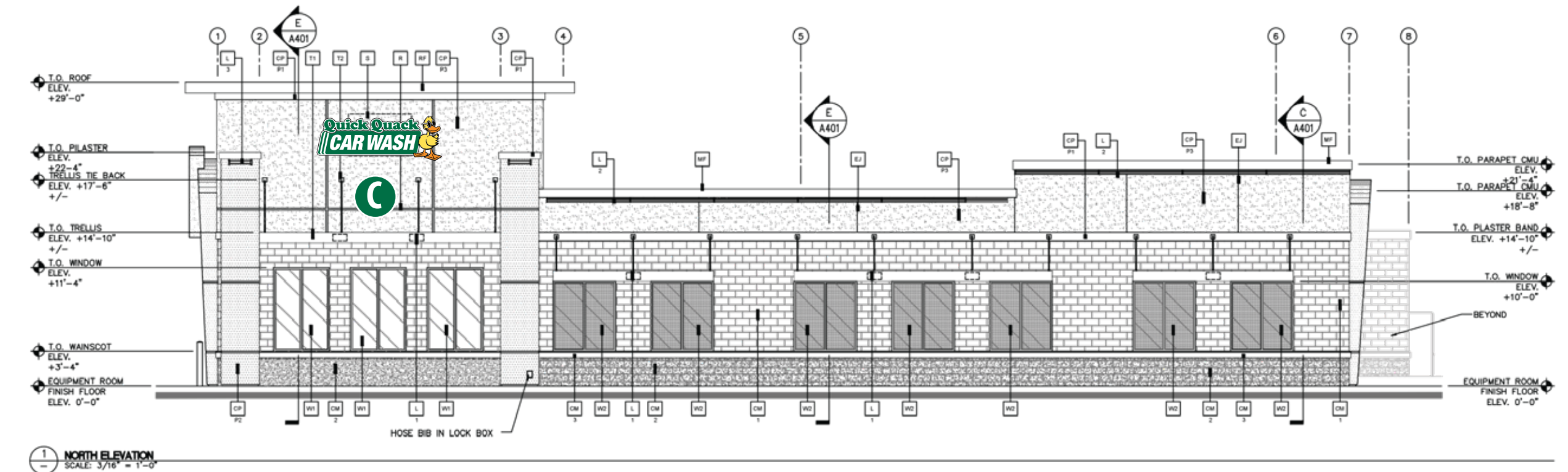
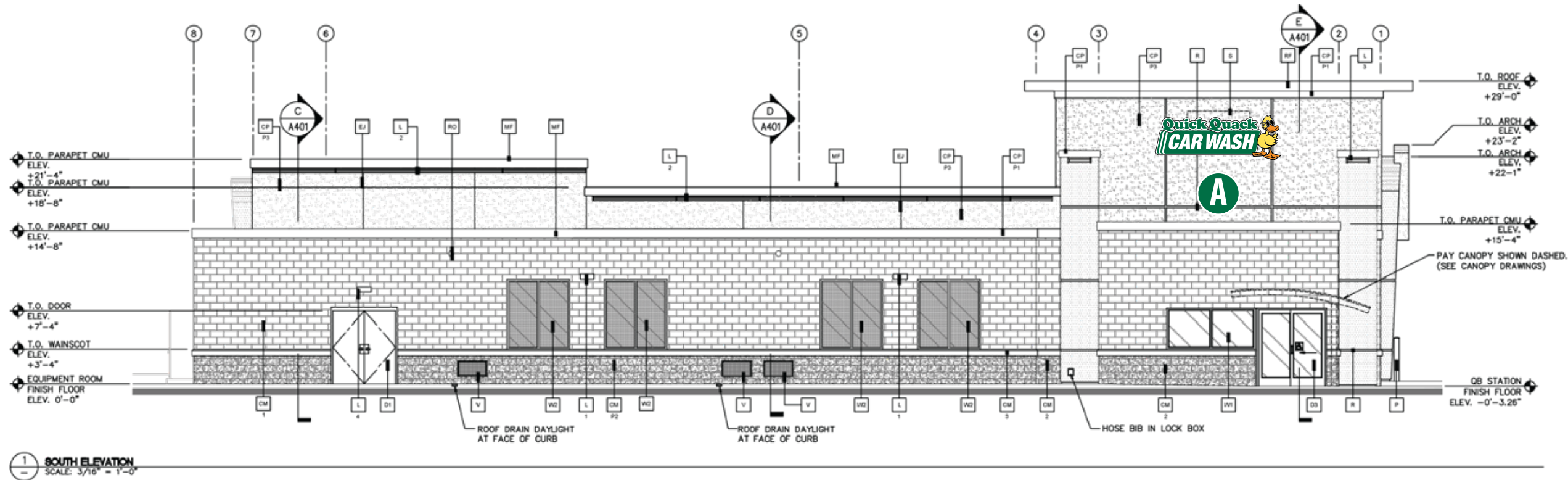
THIS DRAWING REMAINS THE EXCLUSIVE PROPERTY OF FAIRMONT SIGN COMPANY. THIS DESIGN CANNOT BE COPIED IN WHOLE OR IN PART, ALTERED, OR EXHIBITED IN ANY MANNER WITHOUT THE WRITTEN CONSENT OF FAIRMONT SIGN COMPANY. THE EXCEPTION IS ANY PREVIOUSLY COPYRIGHTED ARTWORK SUPPLIED BY THE CLIENT.

UNLESS OTHERWISE NOTED, ALL COLORS PORTRAYED ARE REPRESENTATIVE ONLY.

**ALL DIMENSIONS TO BE
FIELD VERIFIED PRIOR TO
INSTALLATION**

Quick Quack | Loomis, CA

NOTE: Renderings below utilize sample dimensions.



FAIRMONT
SIGN COMPANY

3750 East Outer Drive
Detroit, MI 48234
t: 313.368.4000 f: 313.368.9335
www.fairmontsign.com

Client:



Quick Quack Car Wash #6-066
Sierra Collage Blvd & Brace Rd
Loomis, CA

Date:

1/8/20

File:

Accounts/Misc/Quick Quack/Elev/
Loomis, CA

Designer:

RNB

Scale:

NA

Job#

00000

Sheet#

2 of 9

Revision #

1

Date:

4-24-23

Revision Description:

Customer

Approval:

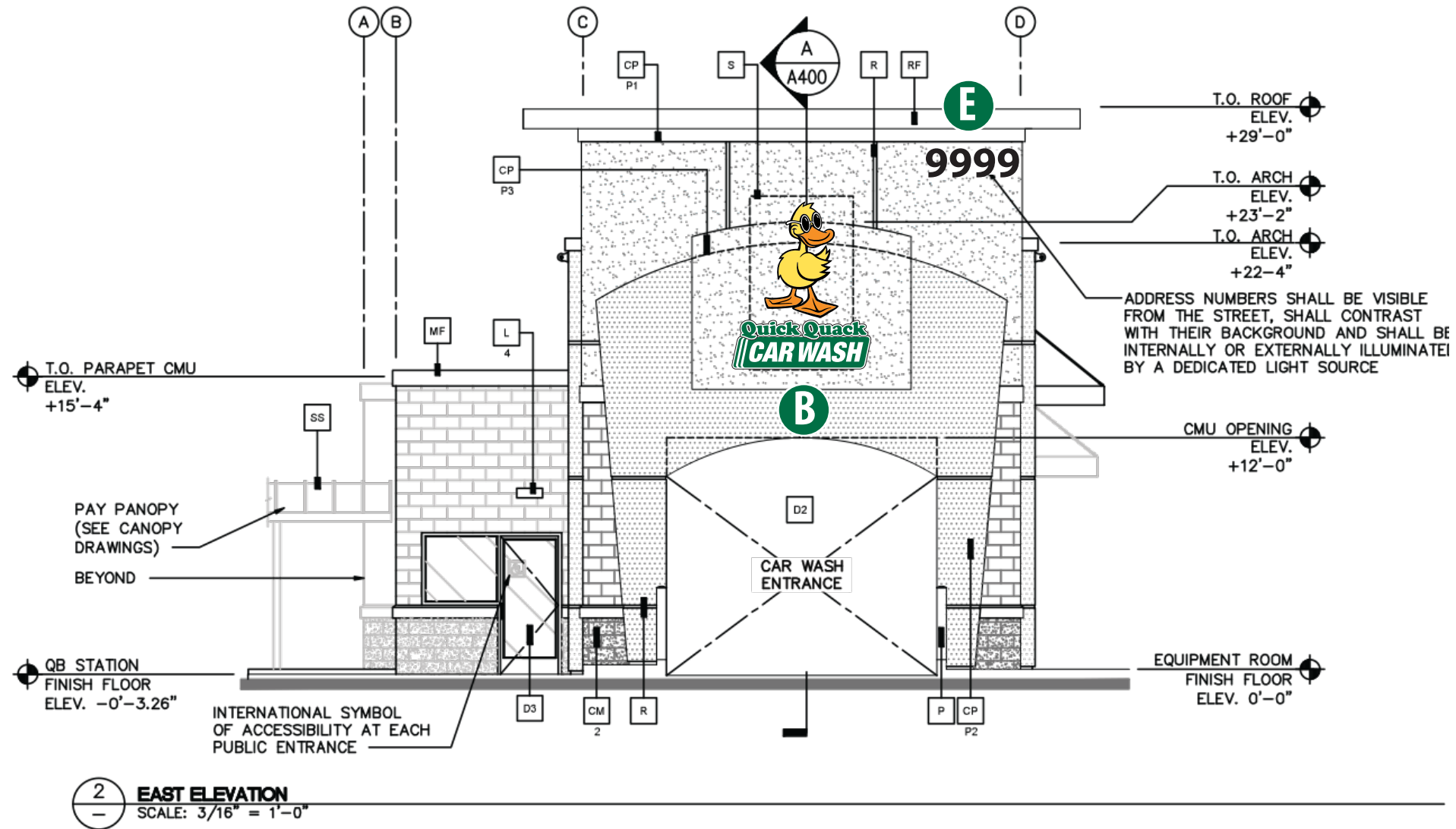
THIS DRAWING REMAINS THE EXCLUSIVE PROPERTY OF FAIRMONT SIGN COMPANY. THIS DESIGN CANNOT BE COPIED IN WHOLE OR IN PART, ALTERED, OR EXHIBITED IN ANY MANNER WITHOUT THE WRITTEN CONSENT OF FAIRMONT SIGN COMPANY. THE EXCEPTION IS ANY PREVIOUSLY COPYRIGHTED ARTWORK SUPPLIED BY THE CLIENT.

UNLESS OTHERWISE NOTED, ALL COLORS PORTRAYED ARE REPRESENTATIVE ONLY.

ALL DIMENSIONS TO BE FIELD VERIFIED PRIOR TO INSTALLATION

Quick Quack | Loomis, CA

NOTE: Renderings below utilize sample dimensions.



FAIRMONT
SIGN COMPANY

3750 East Outer Drive
Detroit, MI 48234
t: 313.368.4000 f: 313.368.9335
www.fairmontsign.com

Client:



Quick Quack Car Wash #6-066
Sierra Collage Blvd & Brace Rd
Loomis, CA

Date:
1/8/20

File:
Accounts/Misc/Quick Quack/Elev/
Loomis, CA

Designer:
RNB

Scale:
NA

Job# Sheet#
00000 3 of 9

Revision # Date:
1 4-24-23

Revision Description:

Customer
Approval:

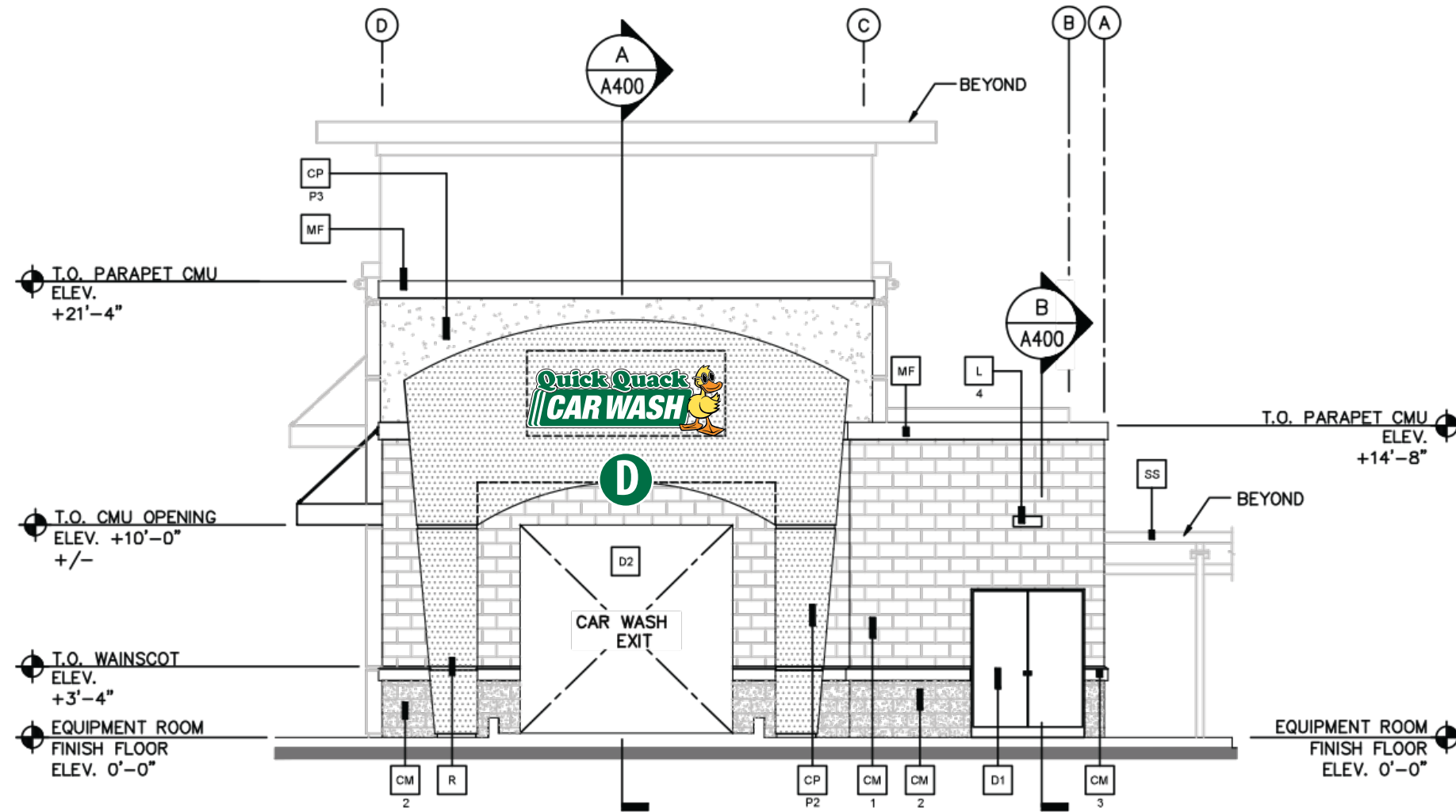
THIS DRAWING REMAINS THE EXCLUSIVE PROPERTY OF FAIRMONT SIGN COMPANY. THIS DESIGN CANNOT BE COPIED IN WHOLE OR IN PART, ALTERED, OR EXHIBITED IN ANY MANNER WITHOUT THE WRITTEN CONSENT OF FAIRMONT SIGN COMPANY. THE EXCEPTION IS ANY PREVIOUSLY COPYRIGHTED ARTWORK SUPPLIED BY THE CLIENT.

UNLESS OTHERWISE NOTED, ALL COLORS PORTRAYED ARE REPRESENTATIVE ONLY.

**ALL DIMENSIONS TO BE
FIELD VERIFIED PRIOR TO
INSTALLATION**

Quick Quack | Loomis, CA

NOTE: Renderings below utilize sample dimensions.



2 WEST ELEVATION
SCALE: 3/16" = 1'-0"

FAIRMONT
SIGN COMPANY
3750 East Outer Drive
Detroit, MI 48234
t: 313.368.4000 f: 313.368.9335
www.fairmontsign.com

Client:
Quick Quack
CAR WASH

Quick Quack Car Wash #6-066
Sierra Collage Blvd & Brace Rd
Loomis, CA

Date:
1/8/20

File:
Accounts/Misc/Quick Quack/Elev/
Loomis, CA

Designer:
RNB

Scale:
NA

Job# **Sheet#**
00000 4 of 9

Revision # **Date:**
1 4-24-23

Revision Description:

Customer Approval:

THIS DRAWING REMAINS THE EXCLUSIVE PROPERTY OF FAIRMONT SIGN COMPANY. THIS DESIGN CANNOT BE COPIED IN WHOLE OR IN PART, ALTERED, OR EXHIBITED IN ANY MANNER WITHOUT THE WRITTEN CONSENT OF FAIRMONT SIGN COMPANY. THE EXCEPTION IS ANY PREVIOUSLY COPYRIGHTED ARTWORK SUPPLIED BY THE CLIENT.

UNLESS OTHERWISE NOTED, ALL COLORS PORTRAYED ARE REPRESENTATIVE ONLY.

ALL DIMENSIONS TO BE FIELD VERIFIED PRIOR TO INSTALLATION

NOTE: Renderings below utilize sample dimensions.



A C QTY 2: LED Illuminated Wall Signs
(49.9 SqFt)

Vinyl Film Color Schedule

A	B	C	D
3M 3630-22 Black	3M 3630-26 Green	3M 3630-015 Yellow	3M 3630-74 Kumquat Orange

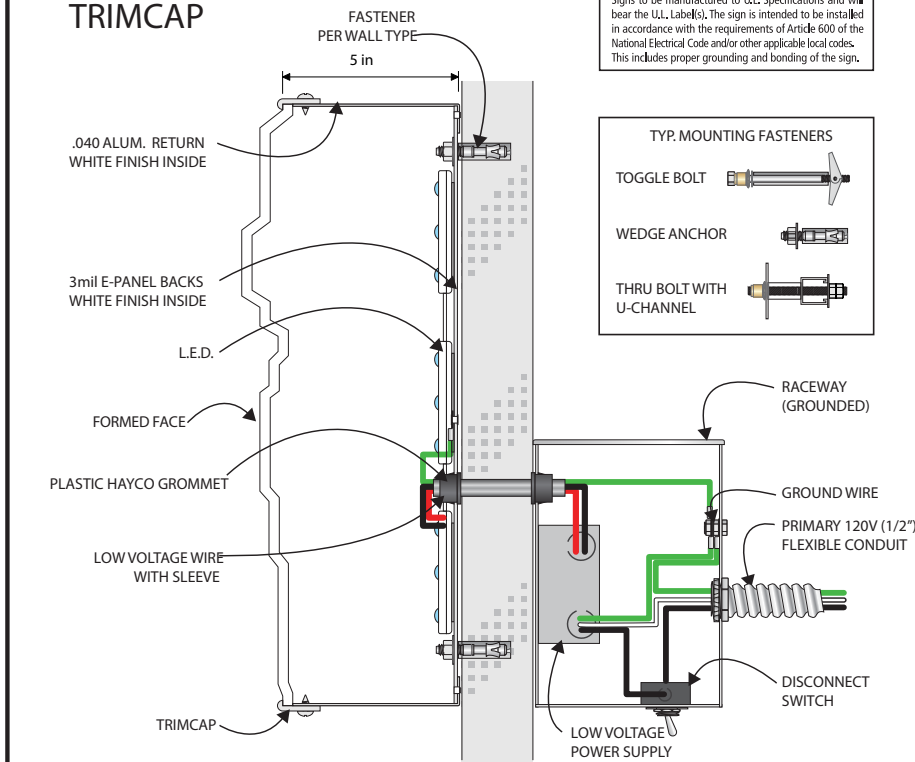
Material Schedule

Fabricated aluminum, cloud-shaped channel construction. Face to be White acrylic with 3M vinyl film overlays (see color schedule). Returns and trimcap to be painted White. Cabinet to be internally illuminated with White LEDs.

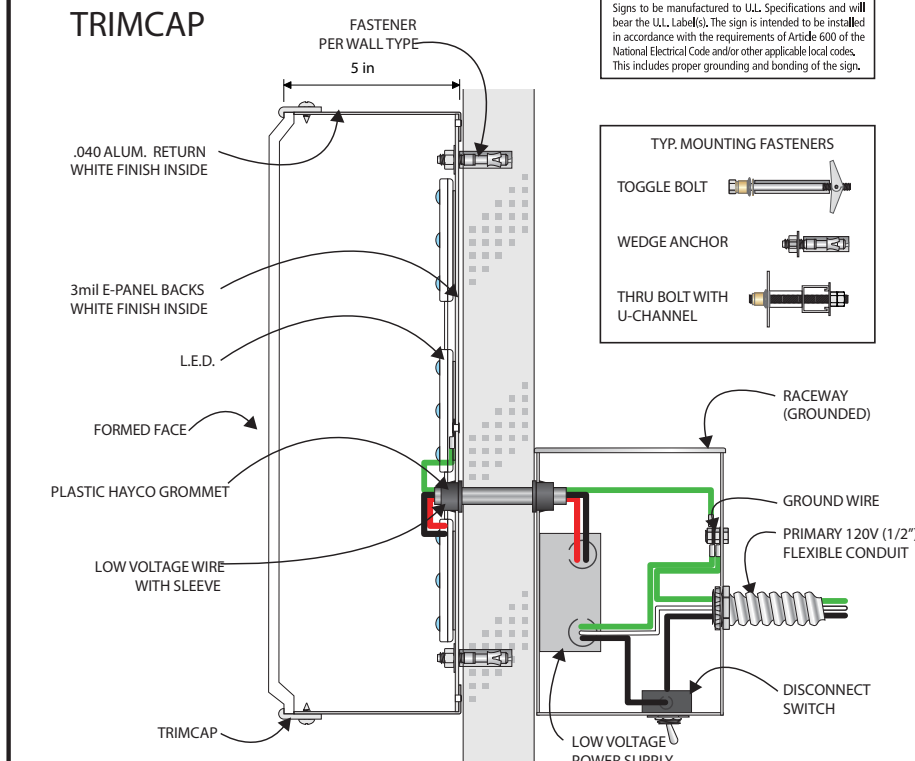


THREE DIMENSIONAL CONTOURED FACE

L.E.D. DUCK SECTION
FLUSH WALL MOUNT
TRIMCAP



L.E.D. LETTER SECTION
FLUSH WALL MOUNT
TRIMCAP



Quick Quack Car Wash #6-066
Sierra Collage Blvd & Brace Rd
Loomis, CA

Date:
1/8/20

File:
Accounts/Misc/Quick Quack/Elev/
Loomis, CA

Designer:
RNB

Scale:
NA

Job# 00000 Sheet# 5 of 9

Revision # 1 Date: 4-24-23

Revision Description:

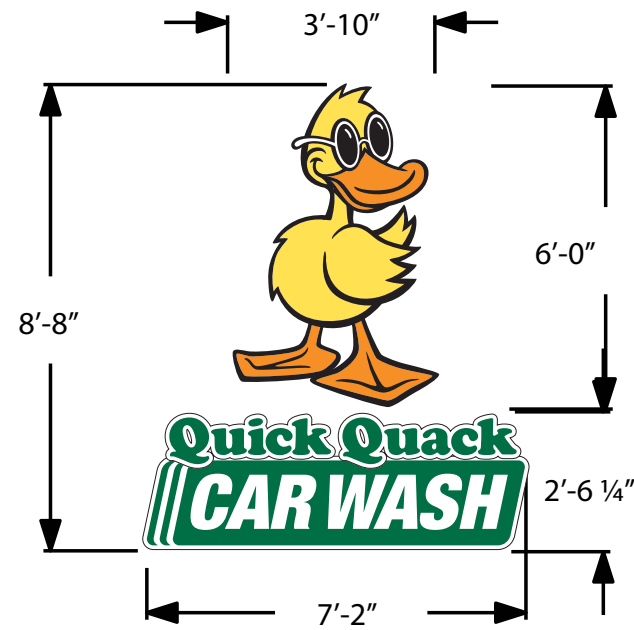
Customer Approval:

THIS DRAWING REMAINS THE EXCLUSIVE PROPERTY OF FAIRMONT SIGN COMPANY. THIS DESIGN CANNOT BE COPIED IN WHOLE OR IN PART, ALTERED, OR EXHIBITED IN ANY MANNER WITHOUT THE WRITTEN CONSENT OF FAIRMONT SIGN COMPANY. THE EXCEPTION IS ANY PREVIOUSLY COPYRIGHTED ARTWORK SUPPLIED BY THE CLIENT.
UNLESS OTHERWISE NOTED, ALL COLORS PORTRAYED ARE REPRESENTATIVE ONLY.

ALL DIMENSIONS TO BE FIELD VERIFIED PRIOR TO INSTALLATION

Quick Quack | Loomis, CA

NOTE: Renderings below utilize sample dimensions.



B QTY 1: LED Illuminated Wall Sign

Stacked Sign (62.1 SqFt)
 Duck Sign: 23.0 SqFt
 Cloud Sign: 18.1 SqFt

Material Schedule

Fabricated aluminum, cloud-shaped channel construction. Face to be White acrylic with 3M vinyl film overlays (see color schedule). Returns and trimcap to be painted White. Cabinet to be internally illuminated with White LEDs.

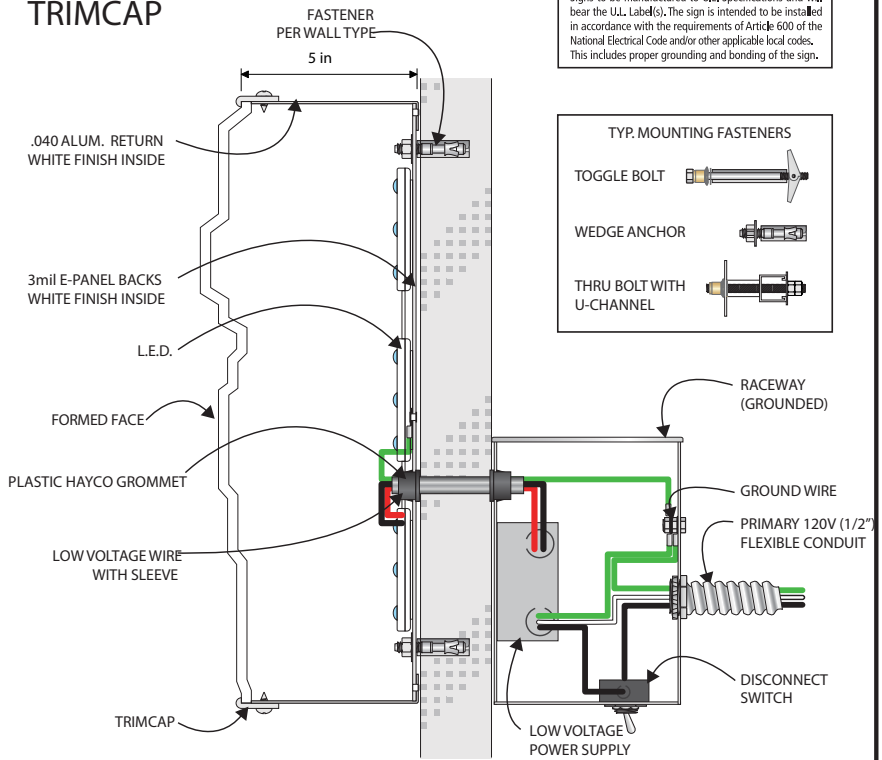
Vinyl Film Color Schedule

A	B	C	D
3M 3630-22 Black	3M 3630-26 Green	3M 3630-015 Yellow	3M 3630-74 Kumquat Orange

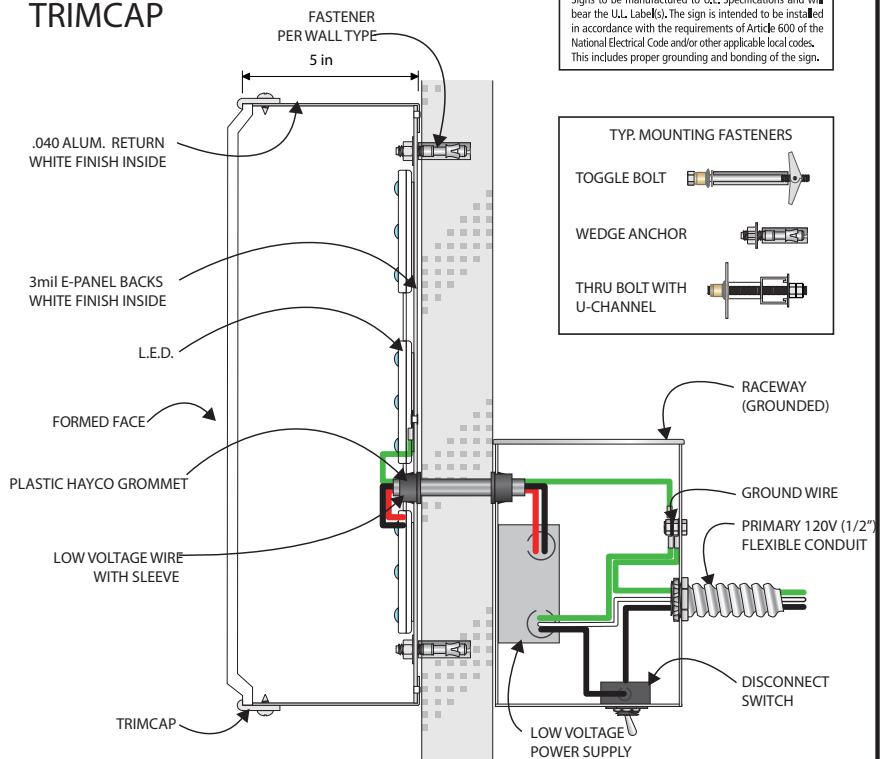
THREE DIMENSIONAL CONTOURED FACE



L.E.D. DUCK SECTION FLUSH WALL MOUNT TRIMCAP



L.E.D. LETTER SECTION FLUSH WALL MOUNT TRIMCAP



FAIRMONT
SIGN COMPANY
 3750 East Outer Drive
 Detroit, MI 48234
 t: 313.368.4000 f: 313.368.9335
 www.fairmontsign.com

Client:
Quick Quack
CAR WASH

Quick Quack Car Wash #6-066
 Sierra Collage Blvd & Brace Rd
 Loomis, CA

Date:
 1/8/20

File:
 Accounts/Misc/Quick Quack/Elev/
 Loomis, CA

Designer:
 RNB

Scale:
 NA

Job# 00000 Sheet# 6 of 9

Revision # 1 Date: 4-24-23

Revision Description:

Customer Approval:

THIS DRAWING REMAINS THE EXCLUSIVE PROPERTY OF FAIRMONT SIGN COMPANY. THIS DESIGN CANNOT BE COPIED IN WHOLE OR IN PART, ALTERED, OR EXHIBITED IN ANY MANNER WITHOUT THE WRITTEN CONSENT OF FAIRMONT SIGN COMPANY. THE EXCEPTION IS ANY PREVIOUSLY COPYRIGHTED ARTWORK SUPPLIED BY THE CLIENT.

UNLESS OTHERWISE NOTED, ALL COLORS PORTRAYED ARE REPRESENTATIVE ONLY.

ALL DIMENSIONS TO BE FIELD VERIFIED PRIOR TO INSTALLATION

NOTE: Renderings below utilize sample dimensions.



D QTY 1: LED Illuminated Wall Sign
Background is opaque- only copy lights.
(31.5 SqFt)

Vinyl Film Color Schedule

A	B	C	D
3M 3630-22 Black	3M 3630-26 Green	3M 3630-015 Yellow	3M 3630-74 Kumquat Orange

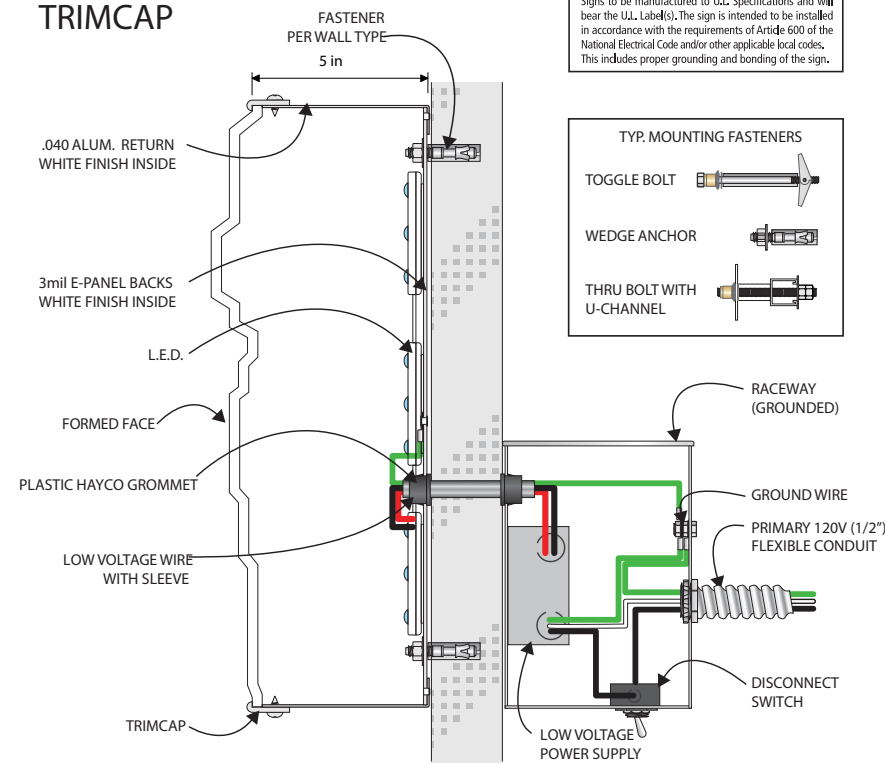
Material Schedule

Fabricated aluminum, cloud-shaped channel construction. Face to be White acrylic with 3M vinyl film overlays (see color schedule). Returns and trimcap to be painted White. Cabinet to be internally illuminated with White LEDs.

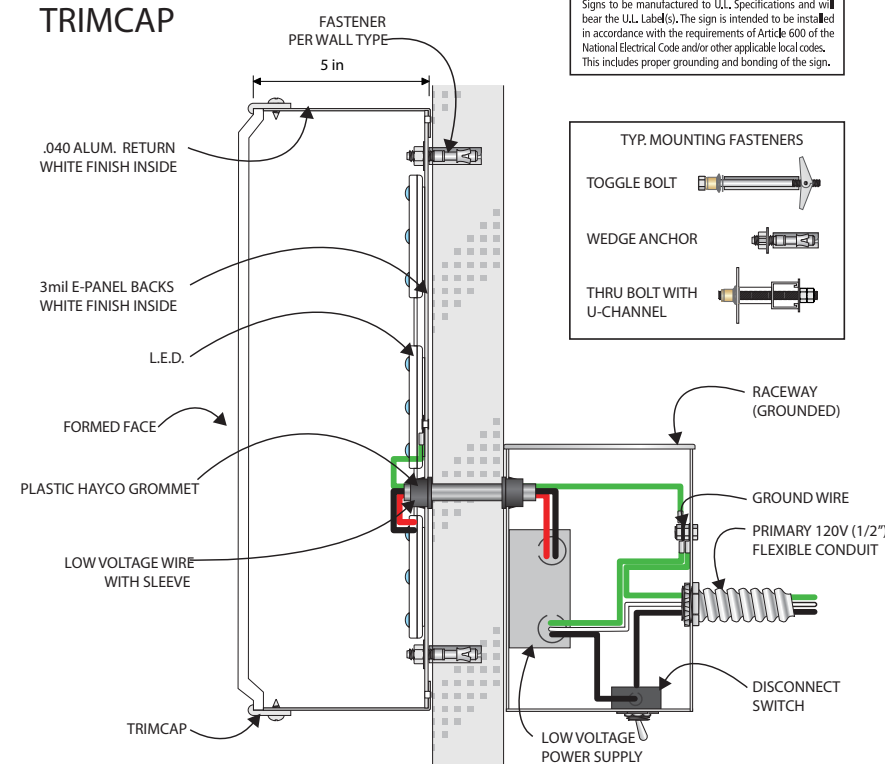


THREE DIMENSIONAL CONTOURED FACE
W/ OPAQUE BACKGROUND PROVIDES
AN INDIVIDUAL LETTER APPEARANCE

L.E.D. DUCK SECTION
FLUSH WALL MOUNT
TRIMCAP



L.E.D. LETTER SECTION
FLUSH WALL MOUNT
TRIMCAP



3750 East Outer Drive
Detroit, MI 48234
t: 313.368.4000 f: 313.368.9335
www.fairmontsign.com

Client:



Quick Quack Car Wash #6-066
Sierra Collage Blvd & Brace Rd
Loomis, CA

Date:
1/8/20

File:
Accounts/Misc/Quick Quack/Elev/
Loomis, CA

Designer:
RNB

Scale:
NA

Job# 00000 Sheet# 7 of 9

Revision # 1 Date: 4-24-23

Revision Description:

Customer Approval:

THIS DRAWING REMAINS THE EXCLUSIVE PROPERTY OF FAIRMONT SIGN COMPANY. THIS DESIGN CANNOT BE COPIED IN WHOLE OR IN PART, ALTERED, OR EXHIBITED IN ANY MANNER WITHOUT THE WRITTEN CONSENT OF FAIRMONT SIGN COMPANY. THE EXCEPTION IS ANY PREVIOUSLY COPYRIGHTED ARTWORK SUPPLIED BY THE CLIENT.

UNLESS OTHERWISE NOTED, ALL COLORS PORTRAYED ARE REPRESENTATIVE ONLY.

ALL DIMENSIONS TO BE FIELD VERIFIED PRIOR TO INSTALLATION

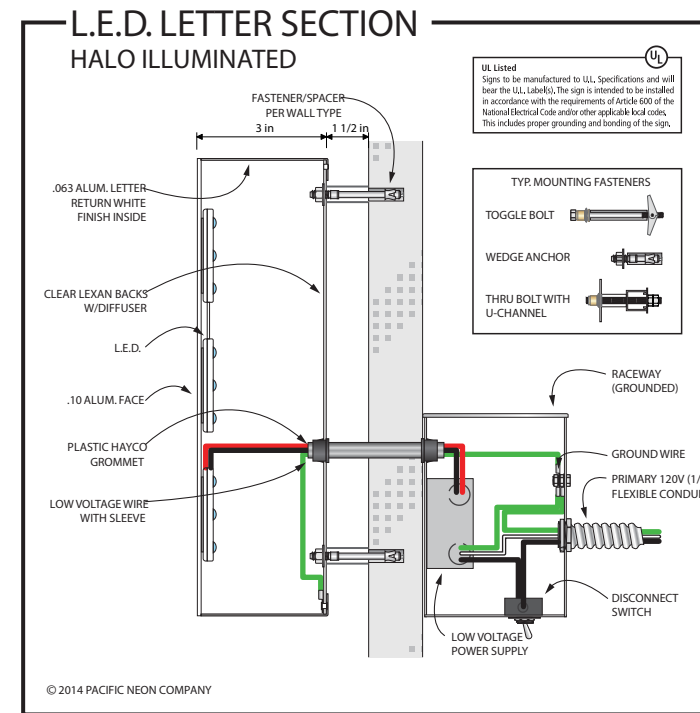
NOTE: Renderings below utilize sample dimensions.



E QTY 1: Reverse Pan Channel LED Halo Illuminated Numerals
 Area for this sign not included in overall signage area calculation
 NOTE: Address must be confirmed.

Material Schedule

Numerals
 Fabricated aluminum, reverse pan channel construction with faces and returns painted Black, satin finish. Backs to be Clear Lexan with 1-1/2" stand-offs to peg off numerals from building fascia. Numerals to be internally illuminated with White LEDs.



Client:



Quick Quack Car Wash #6-066
 Sierra Collage Blvd & Brace Rd
 Loomis, CA

Date:
 1/8/20

File:
 Accounts/Misc/Quick Quack/Elev/
 Loomis, CA

Designer:
 RNB

Scale:
 NA

Job# Sheet#
 00000 8 of 9

Revision # Date:
 1 4-24-23

Revision Description:

Customer Approval:

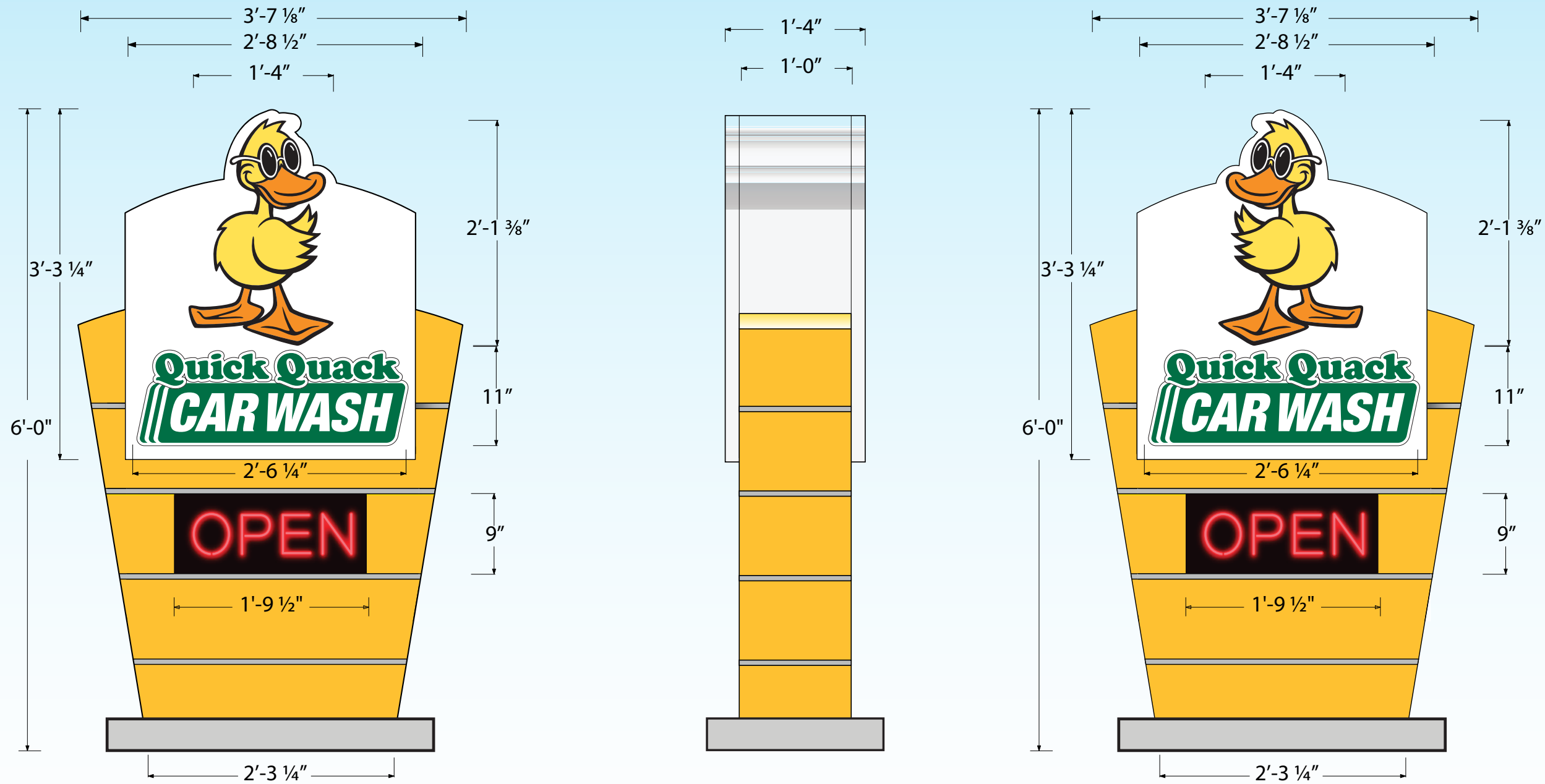
THIS DRAWING REMAINS THE EXCLUSIVE PROPERTY OF FAIRMONT SIGN COMPANY. THIS DESIGN CANNOT BE COPIED IN WHOLE OR IN PART, ALTERED, OR EXHIBITED IN ANY MANNER WITHOUT THE WRITTEN CONSENT OF FAIRMONT SIGN COMPANY. THE EXCEPTION IS ANY PREVIOUSLY COPYRIGHTED ARTWORK SUPPLIED BY THE CLIENT.

UNLESS OTHERWISE NOTED, ALL COLORS PORTRAYED ARE REPRESENTATIVE ONLY.

ALL DIMENSIONS TO BE FIELD VERIFIED PRIOR TO INSTALLATION

Quick Quack | Loomis, CA

NOTE: Renderings below utilize sample dimensions.



F QTY 1: LED Illuminated Monument Sign

Material Schedule

Fabricated aluminum, cloud-shaped channel construction. Face to be White acrylic with 3M vinyl film overlays (see color schedule). Returns and trimcap to be painted White. Cabinet to be internally illuminated with White LEDs.

Vinyl Film Color Schedule

A	B	C	D
3M 3630-22 Black	3M 3630-26 Green	3M 3630-015 Yellow	3M 3630-74 Kumquat Orange



FAIRMONT
SIGN COMPANY

3750 East Outer Drive
Detroit, MI 48234
t: 313.368.4000 f: 313.368.9335
www.fairmontsign.com

Client:

Quick Quack
CAR WASH

Quick Quack Car Wash #6-066
Sierra Collage Blvd & Brace Rd
Loomis, CA

Date:
1/8/20

File:
Accounts/Misc/Quick Quack/Elev/
Loomis, CA

Designer:
RNB

Scale:
NA

Job# Sheet#
00000 9 of 9

Revision # Date:
1 4-24-23

Revision Description:

Customer
Approval:

THIS DRAWING REMAINS THE EXCLUSIVE PROPERTY OF FAIRMONT SIGN COMPANY. THIS DESIGN CANNOT BE COPIED IN WHOLE OR IN PART, ALTERED, OR EXHIBITED IN ANY MANNER WITHOUT THE WRITTEN CONSENT OF FAIRMONT SIGN COMPANY. THE EXCEPTION IS ANY PREVIOUSLY COPYRIGHTED ARTWORK SUPPLIED BY THE CLIENT.

UNLESS OTHERWISE NOTED, ALL COLORS PORTRAYED ARE REPRESENTATIVE ONLY.

**ALL DIMENSIONS TO BE
FIELD VERIFIED PRIOR TO
INSTALLATION**