

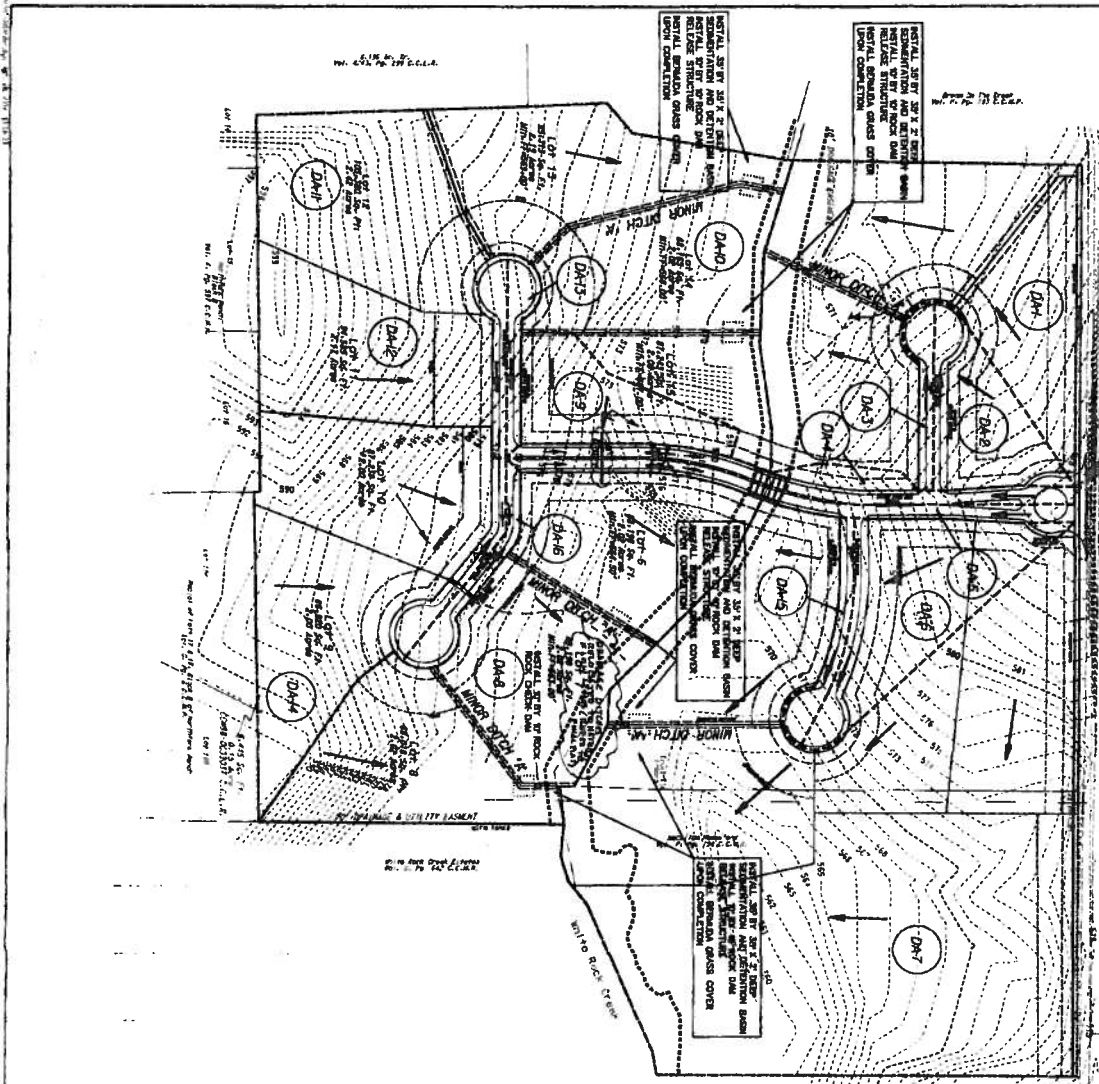
AS BUILT TO JULY 2008

THE PROPERTY IS BOUND BY THE STATE OF TEXAS, COUNTY OF DALLAS, AND CITY OF DALLAS. THE PROPERTY IS BOUND BY THE STATE OF TEXAS, COUNTY OF DALLAS, AND CITY OF DALLAS. THE PROPERTY IS BOUND BY THE STATE OF TEXAS, COUNTY OF DALLAS, AND CITY OF DALLAS.

FOREST GROVE LANE
THE GREENS OF FOREST GROVE
MCCOLLUM AND ASSOCIATES
LUCAS, TEXAS

DESIGNED BY: [Signature]
 DATE: [Date]
 SCALE: [Scale]

NO.	DATE	BY	CHKD.	DESCRIPTION
1	08/11/08	[Signature]	[Signature]	AS BUILT



THIS DOCUMENT IS INTENTIONALLY LEFT BLANK TO ALLOW FOR FUTURE REVISIONS TO THE DESIGN. ANY CHANGES TO THE DESIGN SHALL BE MADE BY THE ENGINEER AND APPROVED BY THE CITY OF FORT WORTH. THIS DOCUMENT IS NOT TO BE USED FOR ANY OTHER PURPOSES WITHOUT THE WRITTEN CONSENT OF THE ENGINEER.

AS BUILT 28 JULY 2008

STORMWATER RUNOFF CALCULATIONS

LOCATOR	7.5 GPM/IN ²	1.000	A (ACRES)	C	Q (CFS)
D40	8	7.52	0.50	0.50	607.075
D41	8	7.52	0.07	0.07	10.075
D42	8	7.52	0.09	0.09	12.075
D43	8	7.52	0.09	0.09	12.075
D44	8	7.52	0.07	0.07	10.075
D45	8	7.52	0.09	0.09	12.075
D46	8	7.52	0.09	0.09	12.075
D47	8	7.52	0.09	0.09	12.075
D48	8	7.52	0.09	0.09	12.075
D49	8	7.52	0.09	0.09	12.075
D50	8	7.52	0.09	0.09	12.075
D51	8	7.52	0.09	0.09	12.075
D52	8	7.52	0.09	0.09	12.075
D53	8	7.52	0.09	0.09	12.075
D54	8	7.52	0.09	0.09	12.075
D55	8	7.52	0.09	0.09	12.075
D56	8	7.52	0.09	0.09	12.075
D57	8	7.52	0.09	0.09	12.075
D58	8	7.52	0.09	0.09	12.075
D59	8	7.52	0.09	0.09	12.075
D60	8	7.52	0.09	0.09	12.075
D61	8	7.52	0.09	0.09	12.075
D62	8	7.52	0.09	0.09	12.075
D63	8	7.52	0.09	0.09	12.075
D64	8	7.52	0.09	0.09	12.075
D65	8	7.52	0.09	0.09	12.075
D66	8	7.52	0.09	0.09	12.075
D67	8	7.52	0.09	0.09	12.075
D68	8	7.52	0.09	0.09	12.075
D69	8	7.52	0.09	0.09	12.075
D70	8	7.52	0.09	0.09	12.075
D71	8	7.52	0.09	0.09	12.075
D72	8	7.52	0.09	0.09	12.075
D73	8	7.52	0.09	0.09	12.075
D74	8	7.52	0.09	0.09	12.075
D75	8	7.52	0.09	0.09	12.075
D76	8	7.52	0.09	0.09	12.075
D77	8	7.52	0.09	0.09	12.075
D78	8	7.52	0.09	0.09	12.075
D79	8	7.52	0.09	0.09	12.075
D80	8	7.52	0.09	0.09	12.075
D81	8	7.52	0.09	0.09	12.075
D82	8	7.52	0.09	0.09	12.075
D83	8	7.52	0.09	0.09	12.075
D84	8	7.52	0.09	0.09	12.075
D85	8	7.52	0.09	0.09	12.075
D86	8	7.52	0.09	0.09	12.075
D87	8	7.52	0.09	0.09	12.075
D88	8	7.52	0.09	0.09	12.075
D89	8	7.52	0.09	0.09	12.075
D90	8	7.52	0.09	0.09	12.075
D91	8	7.52	0.09	0.09	12.075
D92	8	7.52	0.09	0.09	12.075
D93	8	7.52	0.09	0.09	12.075
D94	8	7.52	0.09	0.09	12.075
D95	8	7.52	0.09	0.09	12.075
D96	8	7.52	0.09	0.09	12.075
D97	8	7.52	0.09	0.09	12.075
D98	8	7.52	0.09	0.09	12.075
D99	8	7.52	0.09	0.09	12.075
D100	8	7.52	0.09	0.09	12.075

- NOTES:
1. SEE THE PLAN FOR THE LOCATION OF THE BASIN.
 2. SEE THE PLAN FOR THE LOCATION OF THE BASIN.
 3. SEE THE PLAN FOR THE LOCATION OF THE BASIN.
 4. SEE THE PLAN FOR THE LOCATION OF THE BASIN.



DRAINAGE AREA MAP

THE GREENS OF FOREST GROVE

McCOLLUM AND ASSOCIATES

LUCAS, TEXAS

BEH LUBBERSBERG ASSOCIATES INC.

CIVIL AND ENVIRONMENTAL ENGINEERS

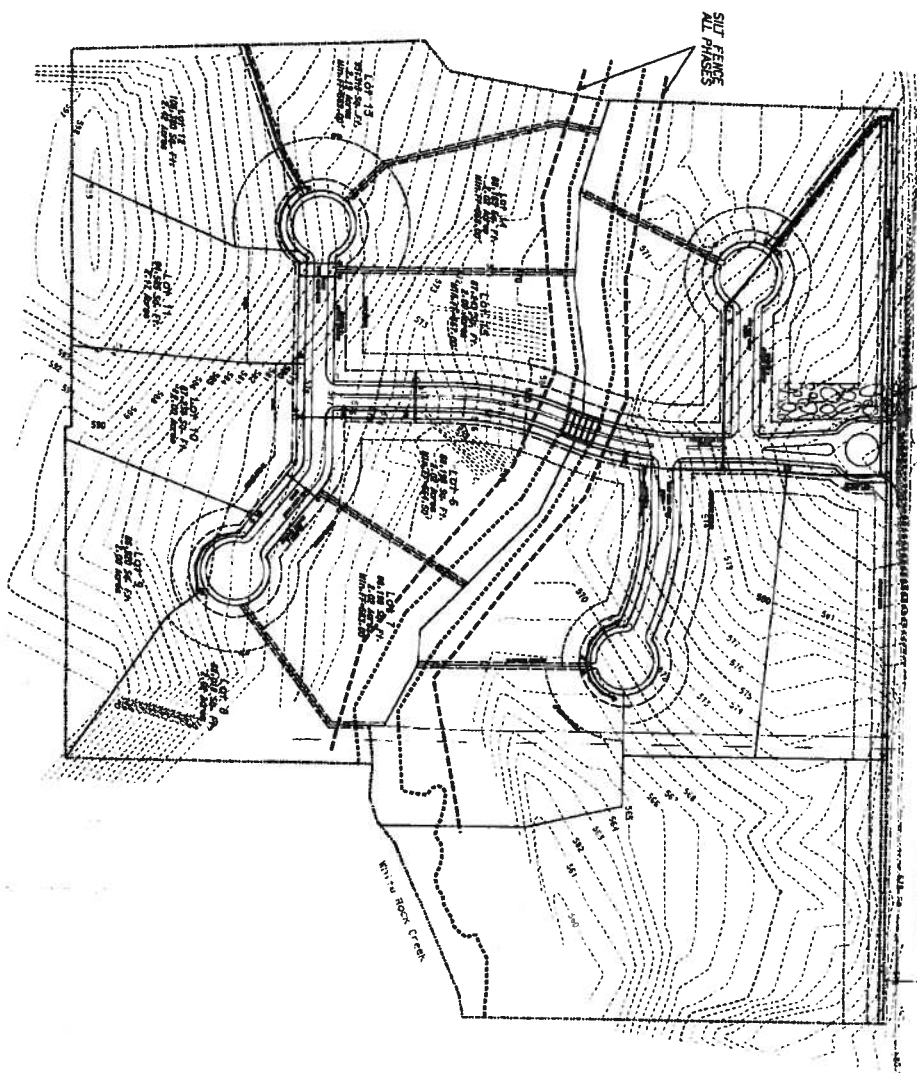
DATE: 08/07/07

SCALE: AS SHOWN

PROJECT: C5



6' WIDE X 50' LONG (MINIMUM DIMENSIONS)
 TYPICAL STONE
 CONSTRUCTION ENTRANCE/EXIT
 PHASE 1



LEGEND

- SILT FENCE
- MILET PROTECTION
- ▨ CONSTRUCTION ENTRANCE/EXIT
- ▩ STONE OVERFLOW STRUCTURE
- ▧ 4' WIDE EROSION MATTING

EROSION CONTROL CONSTRUCTION PHASES:
 PHASE 1 - TOP SOIL, REMOVAL AND RESEED DRAINING
 PHASE 2 - UTILITY INSTALLATION
 PHASE 3 - PAVING
 PHASE 4 - LANDSCAPE AND IRRIGATION



- GENERAL NOTES:**
1. EROSION CONTROL SERVICES AS SHOWN ON THE EROSION CONTROL PLAN FOR THE PROJECT SHALL BE THE FOLLOWING PARTS TO THE START OF LAND FILL, EXCEPT WHERE SHOWN OTHERWISE.
 2. ALL EROSION CONTROL MEASURES SHALL BE INSTALLED IN ACCORDANCE WITH THE CITY OF LUCAS EROSION CONTROL MANUAL AND THE LATEST BMP DEVICE STANDARDS AND SPECIFICATIONS.
 3. THE EROSION CONTROL MEASURES SHALL BE MAINTAINED THROUGHOUT THE CONSTRUCTION PERIOD AND SHALL BE REMOVED OR MODIFIED AS NECESSARY TO PROTECT THE EROSION CONTROL MEASURES.
 4. THE EROSION CONTROL MEASURES SHALL BE MAINTAINED THROUGHOUT THE CONSTRUCTION PERIOD AND SHALL BE REMOVED OR MODIFIED AS NECESSARY TO PROTECT THE EROSION CONTROL MEASURES.

THIS DOCUMENT IS SUBMITTED AS AN AS-BUILT DRAWING FOR RECORD PURPOSES ONLY. THE DESIGNER HAS CONDUCTED VISUAL INSPECTIONS OF THE PROJECT AND HAS FOUND THE EROSION CONTROL MEASURES TO BE IN ACCORDANCE WITH THE CITY OF LUCAS EROSION CONTROL MANUAL AND THE LATEST BMP DEVICE STANDARDS AND SPECIFICATIONS. THE DESIGNER HAS CONDUCTED VISUAL INSPECTIONS OF THE PROJECT AND HAS FOUND THE EROSION CONTROL MEASURES TO BE IN ACCORDANCE WITH THE CITY OF LUCAS EROSION CONTROL MANUAL AND THE LATEST BMP DEVICE STANDARDS AND SPECIFICATIONS.



ENGINEERS AND ASSOCIATES, INC.
 2000 W. 11TH STREET, SUITE 100
 WACO, TEXAS 76798
 TEL: 767-447-1133
 FAX: 767-447-1133

EROSION CONTROL CONSTRUCTION PLAN

PROJECT NO.	11733
DATE	02/12/09
SCALE	AS SHOWN
DESIGNER	ENGINEERS AND ASSOCIATES, INC.
CHECKED BY	DAVID L. HARRIS
DATE	02/12/09

BMP MAINTENANCE SCHEDULE

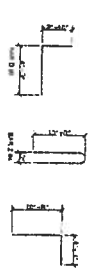
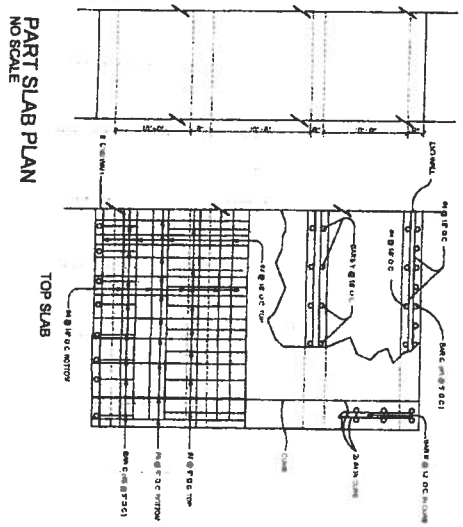
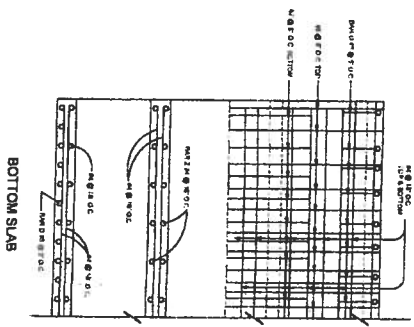
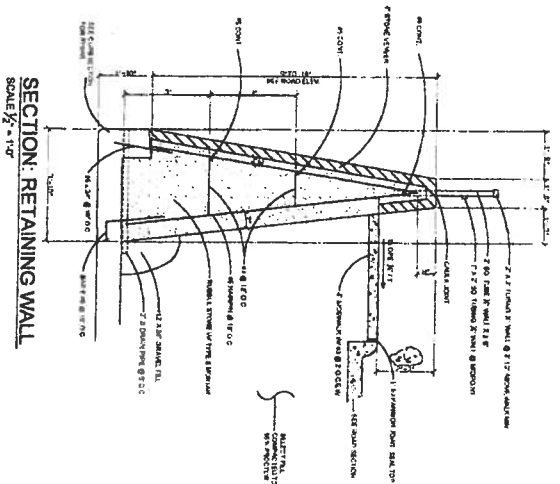
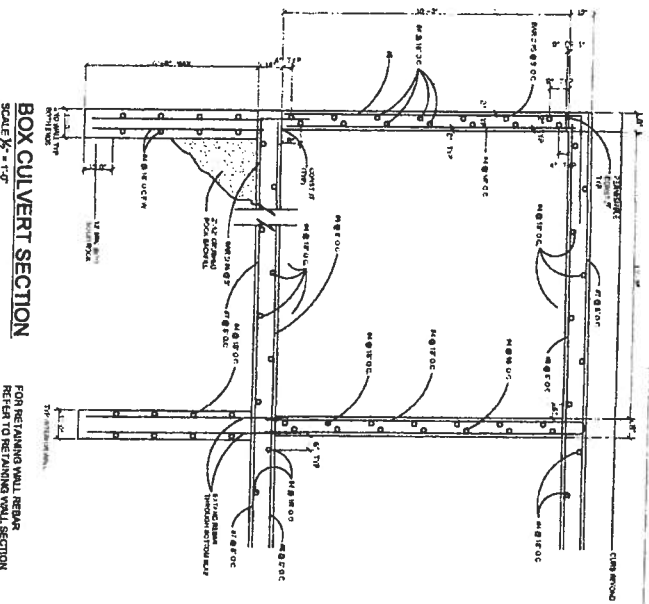
BMP	MAINTENANCE FREQUENCY	BY
SILT FENCE	BEFORE/ AFTER RAIN	CONTRACTOR
HEET PROTECTION	BEFORE/ AFTER RAIN	CONTRACTOR
CHERT BERMING	BEFORE/ AFTER RAIN	CONTRACTOR
STONE OVERFLOW	BEFORE/ AFTER RAIN	CONTRACTOR
4' WIDE PROTECTION	BEFORE/ AFTER RAIN	CONTRACTOR

STORMWATER POLLUTION PREVENTION PLAN
 THE CRENS OF FOREST GROVE
 McCOLLUM AND ASSOCIATES
 LUCAS, TEXAS

HERZBERGER ASSOCIATES, INC.
 ONE AND ENVIRONMENTAL ENGINEERS
 11733 815-2888

DATE	02/12/09
SCALE	AS SHOWN
DESIGNER	ENGINEERS AND ASSOCIATES, INC.
CHECKED BY	DAVID L. HARRIS
DATE	02/12/09

C6



THIS DOCUMENT IS SUBMITTED AS PART OF THE PROPOSAL FOR THE CONSTRUCTION OF THE BOX CULVERT AND RETAINING WALL. ANY INFORMATION OR DATA THAT HAS BEEN OBTAINED FROM THIS DOCUMENT IS THE PROPERTY OF THE ENGINEER AND IS NOT TO BE REPRODUCED OR TRANSMITTED IN ANY FORM OR BY ANY MEANS, ELECTRONIC OR MECHANICAL, INCLUDING PHOTOCOPYING, RECORDING, OR BY ANY INFORMATION STORAGE AND RETRIEVAL SYSTEM. THE ENGINEER ASSUMES NO LIABILITY FOR ANY DAMAGE OR INJURY TO PERSONS OR PROPERTY ARISING FROM THE USE OF THIS DOCUMENT.



CULVERT DETAILS 1

THE ENGINEER OF RECORD IS:

McCullum & Associates
2112 W. SPRINGCREEK BLVD. # 7000
DALLAS, TEXAS 75242

DATE: 10/21/01
BY: [Signature]

C7

