

Winkelmann & Associates, Inc.
 CONSULTING CIVIL ENGINEERS & SURVEYORS
 1848 WALSH STREET, SUITE 200
 DALLAS, TEXAS 75202
 (972) 482-7000 FAX

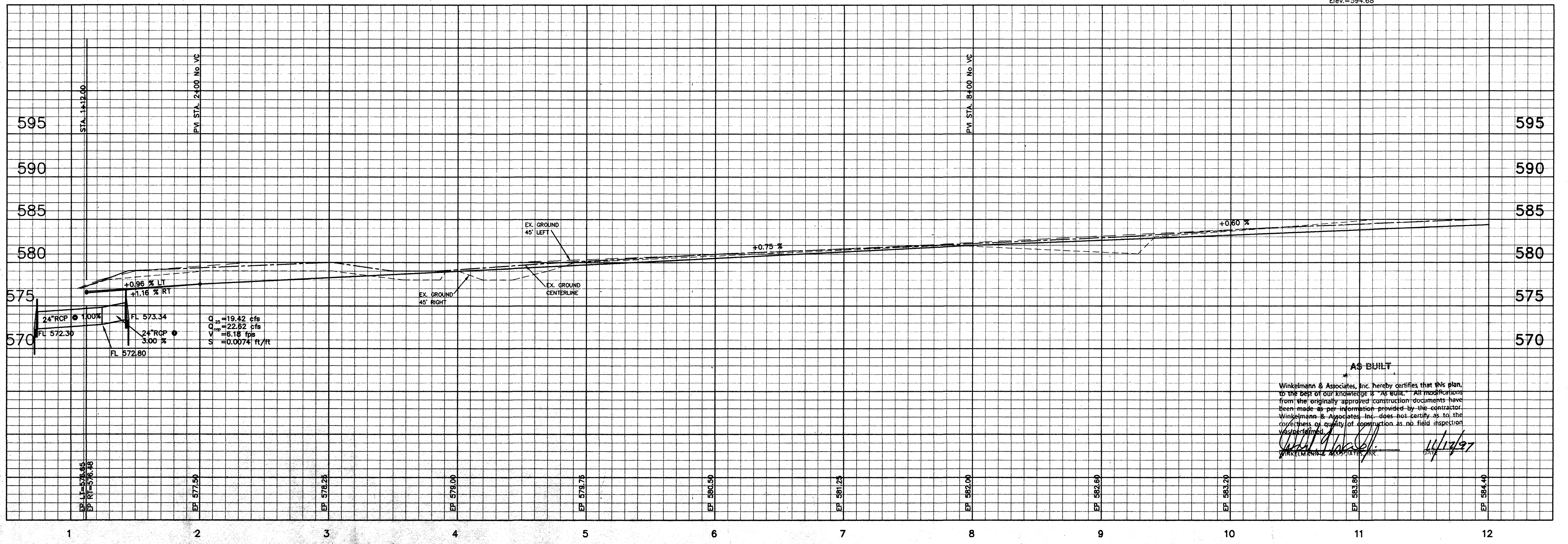
JOHN W. KIRBY SURVEY, ABSTRACT NO. 506
 CITY OF LUCAS
 COLLIN COUNTY, TEXAS
 UNITED STANDARD REALTY MORTGAGE CORPORATION
 718 WEST ARAPAHO, STE. 100
 RICHARDSON, TEXAS 75080
 (972) 783-8888

PAVING, WATER & DRAINAGE PLAN
 CRESTLAND DRIVE
 STA. 1+00 TO STA. 12+01.35

SEE SHEET C-15 FOR CONTINUATION

SEE SHEET C-28 FOR CONTINUATION

BM: Cut Found C Top culvert S. Side White Rock Trail at FM 1378 Elev.=596.42
 TBM: Cut Set on edge of Pmnt. N. side Orchard Gap Laque approx. 4.0' from end of Pmnt. Elev.=584.68



AS BUILT

Winkelmann & Associates, Inc. hereby certifies that this plan, to the best of our knowledge is "As Built." All modifications from the originally approved construction documents have been made as per information provided by the contractor. Winkelmann & Associates, Inc. does not carry as to the correctness or quality of construction as no field inspection was performed.

Winkelmann & Associates, Inc.
 11/14/97

Scale: H. 1"=40' Date: 4/24/97
 Designed By: DFW
 Drawn By: TIC
 Checked By: DFW
 File: 23401PPT.DWG
 Project No.: 23401.01

SHEET
C-17

