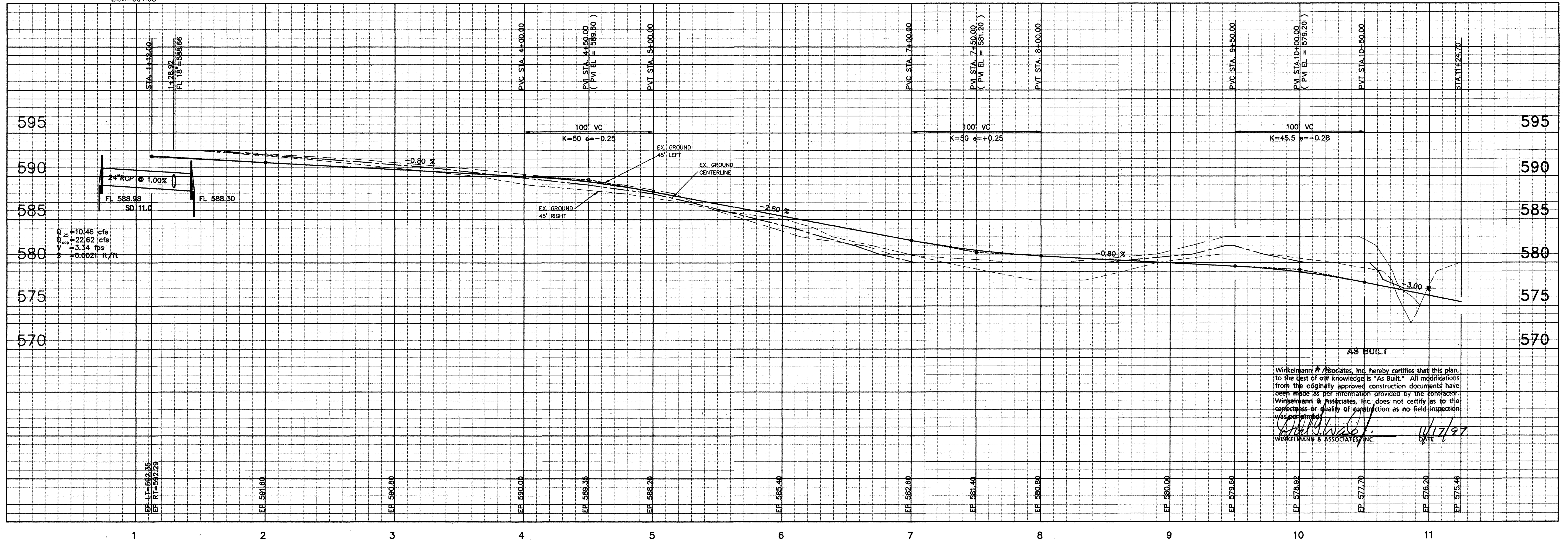


BM :
 "C" Cut Found C Top culvert S. Side White Rock Trail
 at FM 1378 Elev.=596.42
 TBM :
 "T" Cut Set on edge of Pmnt. N. side Orchard Gap
 Laqne approx. 4.0' from end of Pmnt.
 Elev.=594.68



AS BUILT
 Winkelmann & Associates, Inc. hereby certifies that this plan, to the best of our knowledge is "As Built". All modifications from the originally approved construction documents have been made as per information provided by the contractor. Winkelmann & Associates, Inc. does not certify as to the correctness or quality of construction as no field inspection was performed.
 WINKELMANN & ASSOCIATES, INC. DATE: 4/24/97

Winkelmann & Associates, Inc.
 CONSULTING CIVIL ENGINEERS • SURVEYORS
 1900 HILLBURY ROAD, SUITE 300
 DALLAS, TEXAS 75229
 (972) 961-9990
 (972) 961-9998 FAX

STATE OF TEXAS
 REGISTERED PROFESSIONAL ENGINEER
 NO. 68521
 JOHN W. KIRBY

JOHN W. KIRBY SURVEY, ABSTRACT NO. 506
 CITY OF LUCAS
 COLLIN COUNTY, TEXAS
 UNITED STANDARD REALTY MORTGAGE CORPORATION
 718 WEST ARAPAHO, STE. 100
 RICHARDSON, TEXAS 75080
 (972) 783-8888

PAVING, WATER & DRAINAGE PLAN
 PECAN GROVE
 STA. 1+00 TO STA. 11+24.70

Scale: 1" = 40'
 Date: 4/24/97
 Designed By: DFW
 Drawn By: TIC
 Checked By: DFW
 File: 234-PP12.DWG
 Project No.: 23401.01

C-22