

# SUBSURFACE UTILITY ENGINEERING

for

FM 2514  
FROM FM 2551 TO LAVON PKWY.  
COLLIN COUNTY, TEXAS  
CSJ: 2679-02-008 & 2679-03-010

SHEET INDEX	
SHEET	DESCRIPTION
COVER	COVER
MASTER	MASTER INDEX
01	FROM BEGINNING OF PROJECT TO STA 377+00
02	FROM STA 377+00 TO STA 391+00
03	FROM STA 391+00 TO STA 405+00
04	FROM STA 405+00 TO STA 419+00
05	FROM STA 419+00 TO STA 433+00
06	FROM STA 433+00 TO STA 447+00
07	FROM STA 447+00 TO STA 461+00
08	FROM STA 461+00 TO STA 475+00
09	FROM STA 475+00 TO STA 489+00
10	FROM STA 489+00 TO STA 503+00
11	FROM STA 503+00 TO STA 518+00
12	FROM STA 518+00 TO END OF PROJECT



TEXAS DEPARTMENT OF TRANSPORTATION  
DALLAS DISTRICT



AVO# 28848/W005  
FEBRUARY 2013



NOTE: LINE SIZES ARE FROM BEST AVAILABLE RECORDS.

SUBSURFACE UTILITY ENGINEERING						
FM 2514						
FROM FM 2551 TO LAVON PKWY.						
TEXAS DEPARTMENT OF TRANSPORTATION						
COLLIN COUNTY, TEXAS						
 TBPE #F-312						
DESIGN	DRAWN	DATE	SCALE	NOTES	FILE	NO.
HALFF	HALFF	FEBRUARY 2013	NONE	28848 W005	SH-COVER	COVER

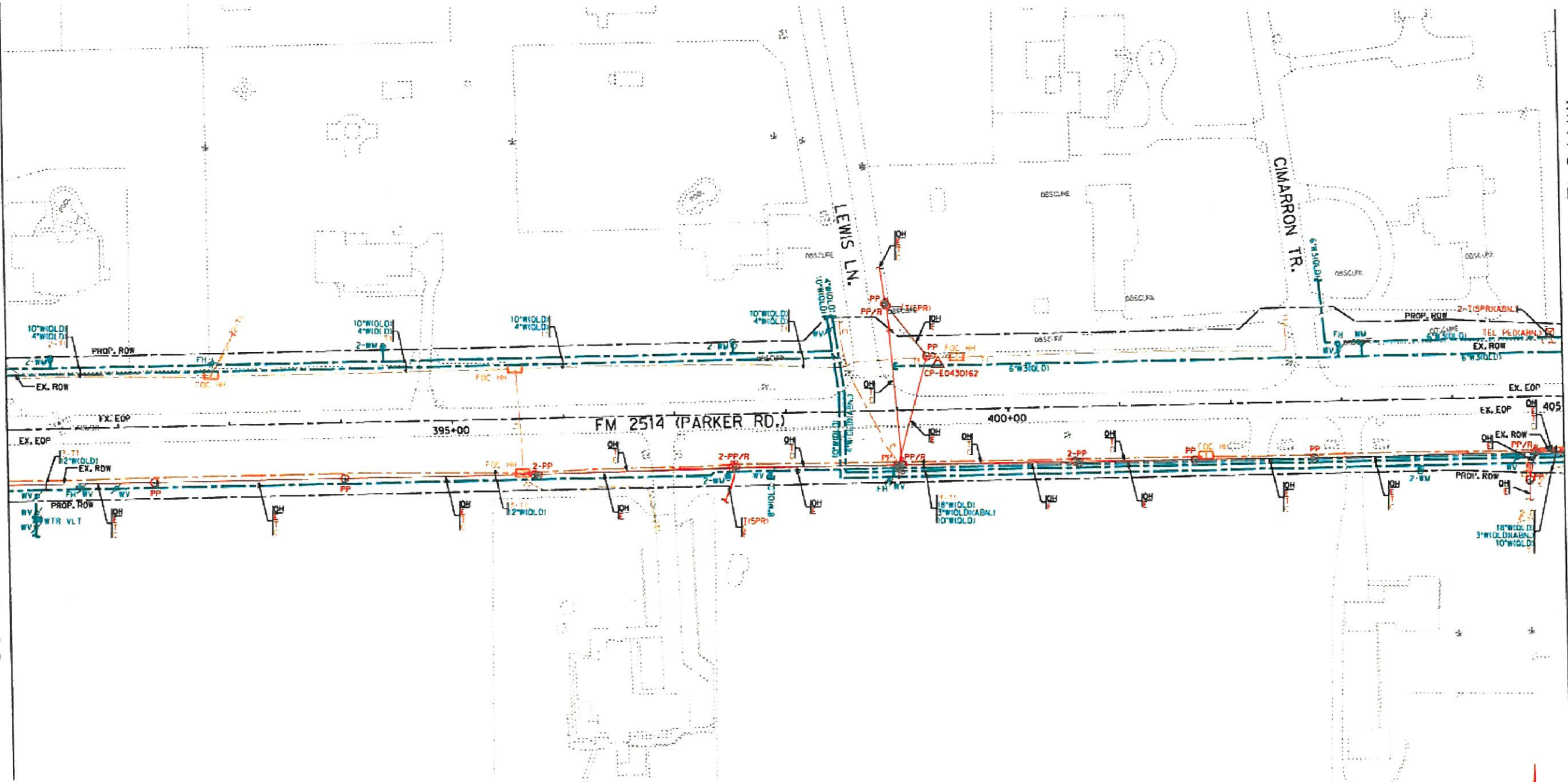






MATCHLINE STA 391+00 ~ SEE SHEET 02

MATCHLINE STA 405+00 ~ SEE SHEET 04



**LEGEND:**

LEVEL "A"	LEVEL "B"	LEVEL "C" & "D"	
⊙	---	---	TEST HOLE
---	---	---	TELEPHONE LINE
---	---	---	FIBER OPTIC LINE
---	---	---	CABLE TELEVISION LINE
---	---	---	WATER LINE
---	---	---	WASTEWATER LINE
---	---	---	ELECTRIC LINE
---	---	---	OVERHEAD UTILITY LINE
TEL PED	TELEPHONE PEDESTAL	TCB	TRAFFIC CONTROL BOX
TEL CAB	TELEPHONE CABINET	EB	ELECTRIC BOX
FOC HH	FIBER OPTIC HAND HOLD	EM	ELECTRIC METER
FOC CAB	FIBER OPTIC CABINET	LP	LIGHT POLE
CAV HVD	TELEVISION PEDESTAL	OW	OUT WIRE
FH	FIRE HYDRANT	U	UTILITY CONTINUATION
WV	WATER VALVE	F	UTILITY END POINT
WM	WATER METER	ABU	ABANDONED UTILITY
WV	WATER VAULT	IOQB	QUALITY LEVEL B
WV	WATER VAULT	IOQC	QUALITY LEVEL C
WV	WATER VAULT	IOQD	QUALITY LEVEL D
WWMH	WASTEWATER MANHOLE	OH	OVERHEAD UTILITIES
PP	POWER POLE	EOP	EDGE OF PAVEMENT
PP/R	POWER POLE W/ RISER	ROW	RIGHT-OF-WAY
TSP	TRAFFIC SIGNAL POLE	CP	CONTROL POINT
HFP	H-FRAME POWER POLE		

Level "B"	6126	±±
Level "D"	5180	±±
± of Level "B"	55	±

**OWNERSHIP LEGEND:**

OWNER:	CONTACT:	PHONE:
VERIZON	DARRIN E. BOX	214-287-2768
VERIZON	DARRIN E. BOX	214-287-2768
GRAND COMMUNICATIONS	CHRIS LANGSTON	972-410-0882
TIME WARNER CABLE	TIM ADAMS	888-515-9188 x120
CITY OF PARKER	JEFF FLANGAN	972-442-6811
NORTH TEXAS MUNICIPAL WATER DISTRICT	BOB GUNN	972-442-5405
MYLE NORTHEAST WATER SUPPLY CORP.	CHESTER ADAMS	972-442-2075
CITY OF LUCAS	STACY CALOULL	972-121-8999
MYLE NORTHEAST WATER SUPPLY CORP.	CHESTER ADAMS	972-442-2075
DUNCOR ELECTRIC DELIVERY	LARRY TROJAN	214-486-2255

FIELD WORK BEGAN ON MAY 17, 2011 AND WAS COMPLETED JULY 10, 2011. HALFF ASSOCIATES EXPRESSLY DISCLAIMS RESPONSIBILITY FOR NEW UTILITY INSTALLATIONS OR MODIFICATIONS OR ADJUSTMENTS TO EXISTING UTILITIES AFTER JULY 10, 2011.

ALL UTILITY INFORMATION HERE IS DEPICTED TO QUALITY LEVEL "B" UNLESS OTHERWISE NOTED.

SIZE INFORMATION SHOWN HEREON IS TAKEN FROM AVAILABLE UTILITY RECORDS:

LEVEL "B" INFORMATION OBTAINED THROUGH THE APPLICATION OF APPROPRIATE SURFACE GEOPHYSICAL METHODS TO DETERMINE THE EXISTENCE AND APPROXIMATE HORIZONTAL POSITION OF UTILITIES.

LEVEL "C" DEPICTED ACCORDING TO RECORD INFORMATION AND EXISTING ASSOCIATED UTILITY STRUCTURES. NO ELECTRONIC INFORMATION WAS OBTAINED.

LEVEL "D" DEPICTED ACCORDING TO RECORD INFORMATION. NO ELECTRONIC INFORMATION WAS OBTAINED.

UNLESS OTHERWISE NOTED, UTILITY LINE LIMITS DEPICTED REPRESENT FIELD DESIGNATING LIMITS AND NOT END POINTS OF UTILITIES.

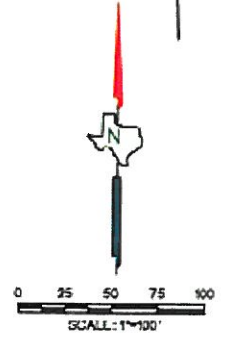
UTILITY INFORMATION LABELED LEVEL "C" OR "D" IS DERIVED FROM FURNISHED RECORDS. SUCH INFORMATION MAY NOT BE ACCURATE OR RELIABLE. HALFF ASSOCIATES EXPRESSLY DISCLAIMS RESPONSIBILITY FOR THE ACCURACY OR RELIABILITY OF UTILITY INFORMATION DEPICTED ACCORDING TO RECORDS.

THE ROADWAY AND ROW FILES WERE PROVIDED TO HALFF BY OTHERS AND ARE SHOWN FOR REFERENCE PURPOSES ONLY.

STORM SEWER AND ASSOCIATED APPURTENANCES ARE NOT SHOWN ON THESE PLANS.

WASTEWATER FLOWLINE INFORMATION SHOWN HEREON ARE BASED ON FIELD MEASURED DEPTHS AND SHALL BE DEEMED APPROXIMATE.

TELEPHONE PAIR SIZES SHOWN HEREON ARE SHOWN FOR REFERENCE PURPOSES ONLY.



NOTE: LINE SIZES ARE FROM BEST AVAILABLE RECORDS.

**SUBSURFACE UTILITY ENGINEERING**

FM 2514  
FROM FM 2551 TO LAVON PKWY.

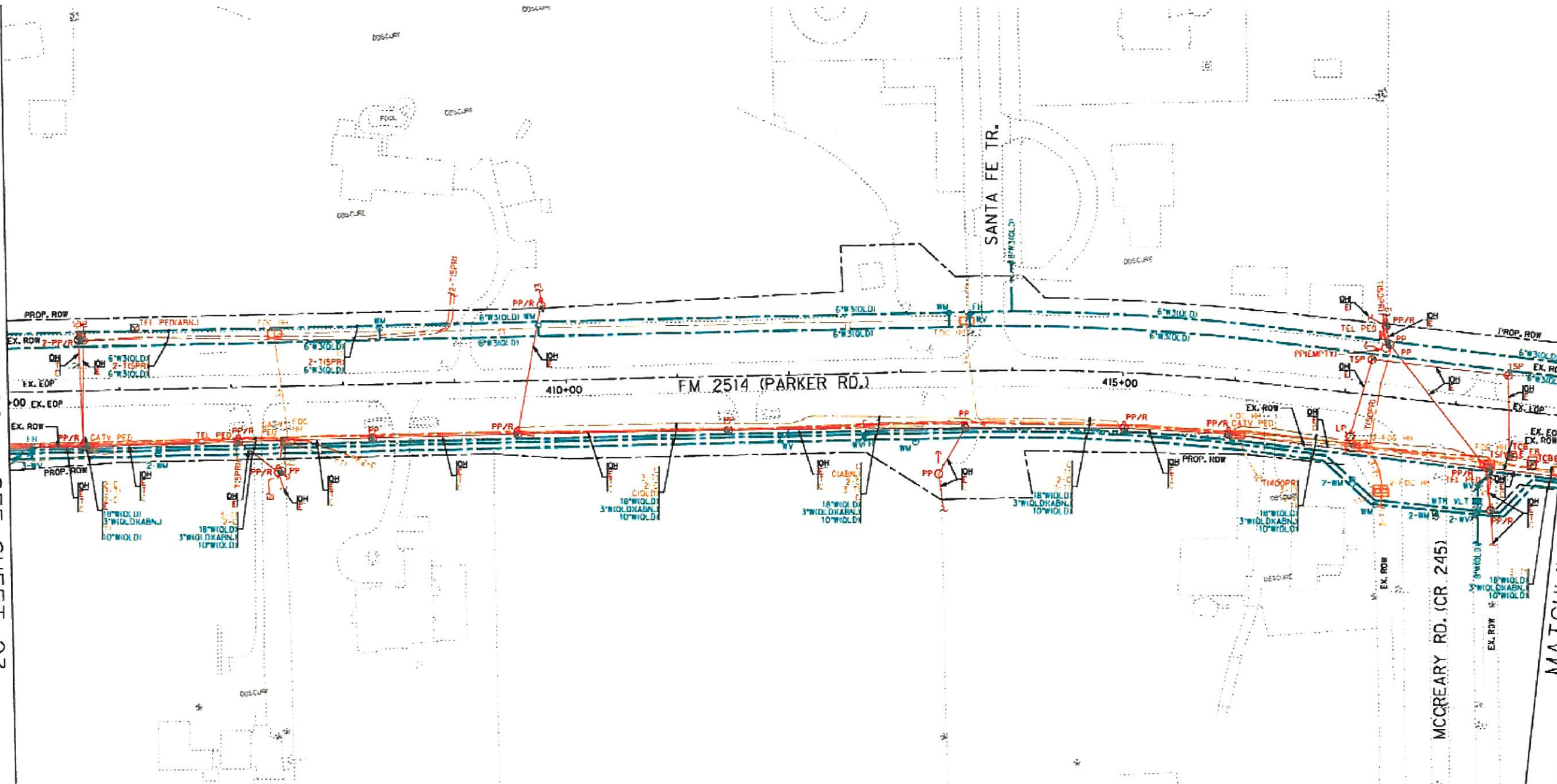
TEXAS DEPARTMENT OF TRANSPORTATION  
COLLIN COUNTY, TEXAS

**HALFF**  
TBPE #F-312

DESIGN	DRAWN	DATE	SCALE	NOTES	FILE	NEL
HALFF	HALFF	FEBRUARY 2013	1"=100'	2888 WOODS	SH-03	03

MATCHLINE STA 405+00 ~ SEE SHEET 03

MATCHLINE STA 419+00 ~ SEE SHEET 05



LEGEND:	
LEVEL 'A'	LEVEL 'B'
TEL PED	TELEPHONE PEDESTAL
TEL CAB	TELEPHONE CABINET
FDC H	FIBER OPTIC HAND HOLE
FDC LAB	FIBER OPTIC CABINET
CATV PED	TELEVISION PEDESTAL
FH	FIRE HYDRANT
WV	WATER VALVE
WMU	WATER METER
WTR VLT	WATER VAULT
WMM	WASTEWATER MANHOLE
PP	POWER POLE
PP/R	POWER POLE W/RISEH
TSP	TRAFFIC SIGNAL POLE
HP	H-FRAME POWER POLE
TCB	TRAFFIC CONTROL BOX
EB	ELECTRIC BOX
EM	ELECTRIC METER
LP	LIGHT POLE
LPW	GLY WIRE
U	UTILITY CONTINUATION
E	UTILITY END POINT
A	ABANDONED UTILITY
(O)B	QUALITY LEVEL B
(O)C	QUALITY LEVEL C
(O)D	QUALITY LEVEL D
OH	OVERHEAD UTILITIES
EQ	EDGE OF PAVEMENT
ROW	RIGHT-OF-WAY
CP	CONTROL POINT

Level 'B'	10728	±1
Level 'D'	5365	±1
% of Level 'B'	67	X

OWNERSHIP LEGEND:	OWNER:	CONTACT:	PHONE:
TELEPHONE1)	= VERIZON	DARRIN E. BOX	214-287-2768
FIBER OPTIC CABLE1)	= VERIZON	DARRIN E. BOX	214-287-2768
FIBER OPTIC CABLE FIT2)	= GRAND COMMUNICATIONS	CHRIS LANDSTON	972-410-0683
CABLE TELEVISION1)	= TIME WARNER CABLE	JIM ADAMS	888-518-9188 x121
WATER1)	= CITY OF PARKER	JEFF FLANGAN	972-442-6811
WATER2)	= NORTH TEXAS MUNICIPAL WATER DISTRICT	BOB QUINN	972-442-5405
WATER3)	= WYLE NORTHEAST WATER SUPPLY CORP.	CHESTER ADAMS	972-442-2075
WATER4)	= CITY OF LUCAS	STACY CALDWELL	972-727-8999
WASTEWATER1)	= WYLE NORTHEAST WATER SUPPLY CORP.	CHESTER ADAMS	972-442-2075
ELECTRIC1)	= ONCOR ELECTRIC DELIVERY	LARRY TROJAN	214-486-2255

FIELD WORK BEGAN ON MAY 17, 2011 AND WAS COMPLETED JULY 10, 2011. HALFF ASSOCIATES EXPRESSLY DISCLAIMS RESPONSIBILITY FOR NEW UTILITY INSTALLATIONS OR MODIFICATIONS OR ADJUSTMENTS TO EXISTING UTILITIES AFTER JULY 10, 2011.

ALL UTILITY INFORMATION HERE IS DEPICTED TO QUALITY LEVEL 'B' UNLESS OTHERWISE NOTED.

SIZE INFORMATION SHOWN HEREON IS TAKEN FROM AVAILABLE UTILITY RECORDS:

LEVEL 'B' INFORMATION OBTAINED THROUGH THE APPLICATION OF APPROPRIATE SURFACE GEOPHYSICAL METHODS TO DETERMINE THE EXISTENCE AND APPROXIMATE HORIZONTAL POSITION OF UTILITIES.

LEVEL 'C' DEPICTED ACCORDING TO RECORD INFORMATION AND EXISTING ASSOCIATED UTILITY STRUCTURES. NO ELECTRONIC INFORMATION WAS OBTAINED.

LEVEL 'D' DEPICTED ACCORDING TO RECORD INFORMATION. NO ELECTRONIC INFORMATION WAS OBTAINED.

UNLESS OTHERWISE NOTED, UTILITY LINE LIMITS DEPICTED REPRESENT FIELD DESIGNATED LIMITS AND NOT END POINTS OF UTILITIES.

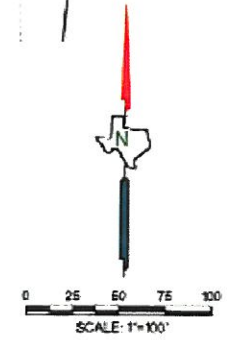
UTILITY INFORMATION LABELED LEVEL 'C' OR 'D' IS DERIVED FROM FURNISHED RECORDS. SUCH INFORMATION MAY NOT BE ACCURATE OR RELIABLE. HALFF ASSOCIATES EXPRESSLY DISCLAIMS RESPONSIBILITY FOR THE ACCURACY OR RELIABILITY OF UTILITY INFORMATION DEPICTED ACCORDING TO RECORDS.

THE ROADWAY AND ROW FILES WERE PROVIDED TO HALFF BY OTHERS AND ARE SHOWN FOR REFERENCE PURPOSES ONLY.

STORM SEWER AND ASSOCIATED APPURTENANCES ARE NOT SHOWN ON THESE PLANS.

BASTEWATER FLOWLINE INFORMATION SHOWN HEREON ARE BASED ON FIELD MEASURED DEPTHS AND SHALL BE DEEMED APPROXIMATE.

TELEPHONE PAIR SIZES SHOWN HEREON ARE SHOWN FOR REFERENCE PURPOSES ONLY.



NOTE: LINE SIZES ARE FROM BEST AVAILABLE RECORDS.

SUBSURFACE UTILITY ENGINEERING					
FM 2514					
FROM FM 2551 TO LAVON PKWY.					
TEXAS DEPARTMENT OF TRANSPORTATION					
COLLIN COUNTY, TEXAS					
TRPE #F-312					
DESIGN	DRAWN	DATE	SCALE	NOTES	FILE
HALFF	HALFF	FEBRUARY 2013	1"=100'	2013 0005	SH-04
					04

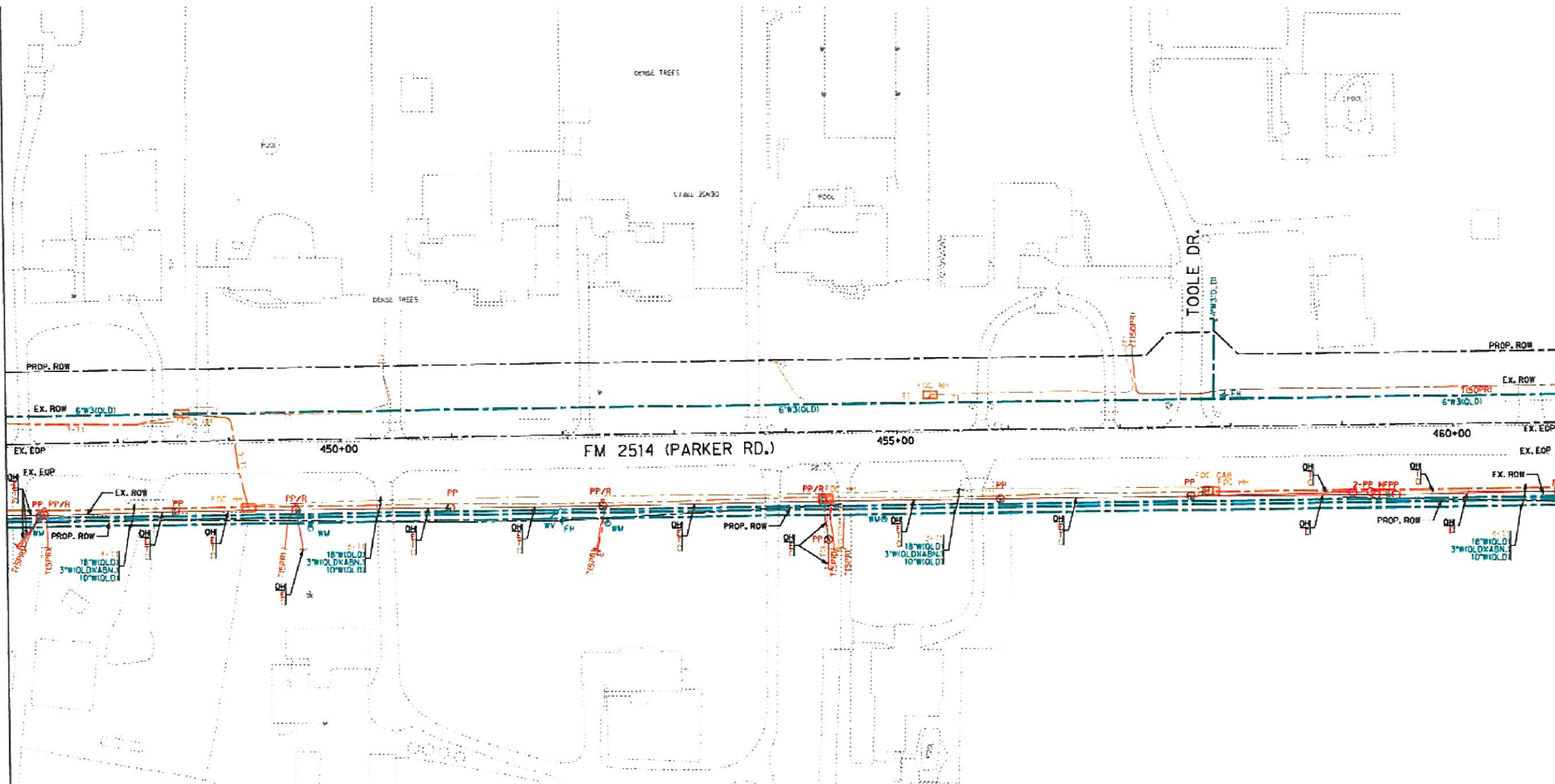






MATCHLINE STA 447+00 ~ SEE SHEET 06

MATCHLINE STA 461+00 ~ SEE SHEET 08



LEGEND:	
LEVEL 'A'	LEVEL 'B'
TEL PED	TELEPHONE PEDESTAL
TEL CAB	TELEPHONE CABINET
FDC CAB	FIBER OPTIC CABINET
FDC CAB	FIBER OPTIC CABINET
FDC CAB	FIBER OPTIC CABINET
FH	FIRE HYDRANT
WV	WATER VALVE
WMO	WATER METER
WTR VLT	WATER VALET
WMMH	WASTEWATER MANHOLE
PP	POWER POLE
PP/R	POWER POLE W/ RISER
TSP	TRAFFIC SIGNAL POLE
HFPF	H-FRAME POWER POLE
TEST HOLE	TEST HOLE
TEL LINE	TELEPHONE LINE
FIBER OPTIC LINE	FIBER OPTIC LINE
CABLE TELEVISION LINE	CABLE TELEVISION LINE
WATER LINE	WATER LINE
WASTEWATER LINE	WASTEWATER LINE
ELECTRIC LINE	ELECTRIC LINE
OVERHEAD UTILITY LINE	OVERHEAD UTILITY LINE
TRF	TRAFFIC CONTROL BOX
EB	ELECTRIC BOX
EM	ELECTRIC METER
LP	LIGHT POLE
GUY WIRE	GUY WIRE
UTL CONT	UTILITY CONTINUATION
UTL END	UTILITY END POINT
ABN	ABANDONED UTILITY
Q1	QUALITY LEVEL B
Q2	QUALITY LEVEL C
Q3	QUALITY LEVEL D
OH	OVERHEAD UTILITIES
EDP	EDGE OF PAVEMENT
RDW	RIGHT-OF-WAY
CP	CONTROL POINT

Level 'B'	6876 ft
Level 'D'	4214 ft
% of Level 'B'	62 %

OWNERSHIP LEGEND:	OWNER:	CONTACT:	PHONE:
TELEPHONE1	VERIZON	DARR E. BOX	214-287-2768
FIBER OPTIC CABLE1	VERIZON	DARR E. BOX	214-287-2768
FIBER OPTIC CABLE2	DRANER COMMUNICATIONS	CHRIS LANGSTON	972-410-0563
CABLE TELEVISION1	TMC WARDNER CABLE	TIM ADAMS	888-510-2188 x120
WATER1	CITY OF PARKER	JEFF FLANGAN	972-442-6811
WATER2	NORTH TEXAS MUNICIPAL WATER DISTRICT	BOB GUNN	972-442-5405
WATER3	WYLYE NORTHEAST WATER SUPPLY CORP.	CHESTER ADAMS	972-442-2075
WATER4	CITY OF LUCAS	STACY CAUDELL	972-727-8999
WASTEWATER1	WYLYE NORTHEAST WATER SUPPLY CORP.	CHESTER ADAMS	972-442-2075
ELECTRIC1	DNCR ELECTRIC DELIVERY	LARRY TROJAN	214-486-2255

FIELD WORK BEGAN ON MAY 17, 2011 AND WAS COMPLETED JULY 10, 2011. HALFF ASSOCIATES EXPRESSLY DISCLAIMS RESPONSIBILITY FOR NEW UTILITY INSTALLATIONS OR MODIFICATIONS OR ADJUSTMENTS TO EXISTING UTILITIES AFTER JULY 10, 2011.

ALL UTILITY INFORMATION HERE IS DEPICTED TO QUALITY LEVEL 'B' UNLESS OTHERWISE NOTED.

SIZE INFORMATION SHOWN HEREON IS TAKEN FROM AVAILABLE UTILITY RECORDS:

LEVEL 'B' INFORMATION OBTAINED THROUGH THE APPLICATION OF APPROPRIATE SURFACE GEOPHYSICAL METHODS TO DETERMINE THE EXISTENCE AND APPROXIMATE HORIZONTAL POSITION OF UTILITIES.

LEVEL 'C' DEPICTED ACCORDING TO RECORD INFORMATION AND EXISTING ASSOCIATED UTILITY STRUCTURES. NO ELECTRONIC INFORMATION WAS OBTAINED.

LEVEL 'D' DEPICTED ACCORDING TO RECORD INFORMATION. NO ELECTRONIC INFORMATION WAS OBTAINED.

UNLESS OTHERWISE NOTED, UTILITY LINE LIMITS DEPICTED REPRESENT FIELD DESIGNATING LIMITS AND NOT END POINTS OF UTILITIES.

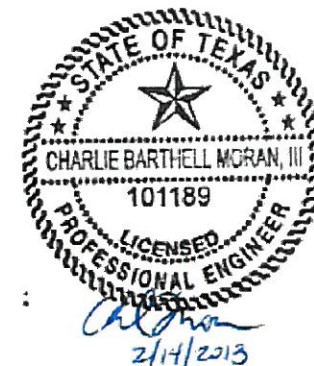
UTILITY INFORMATION LABELED LEVEL 'C' OR 'D' IS DERIVED FROM FURNISHED RECORDS. SUCH INFORMATION MAY NOT BE ACCURATE OR RELIABLE. HALFF ASSOCIATES EXPRESSLY DISCLAIMS RESPONSIBILITY FOR THE ACCURACY OR RELIABILITY OF UTILITY INFORMATION DEPICTED ACCORDING TO RECORDS.

THE ROADWAY AND ROW FILES WERE PROVIDED TO HALFF BY OTHERS AND ARE SHOWN FOR REFERENCE PURPOSES ONLY.

STORM SEWER AND ASSOCIATED APPURTENANCES ARE NOT SHOWN ON THESE PLANS.

WASTEWATER FLOWLINE INFORMATION SHOWN HEREON ARE BASED ON FIELD MEASURED DEPTHS AND SHALL BE DEEMED APPROXIMATE.

TELEPHONE PAIR SIZES SHOWN HEREON ARE SHOWN FOR REFERENCE PURPOSES ONLY.

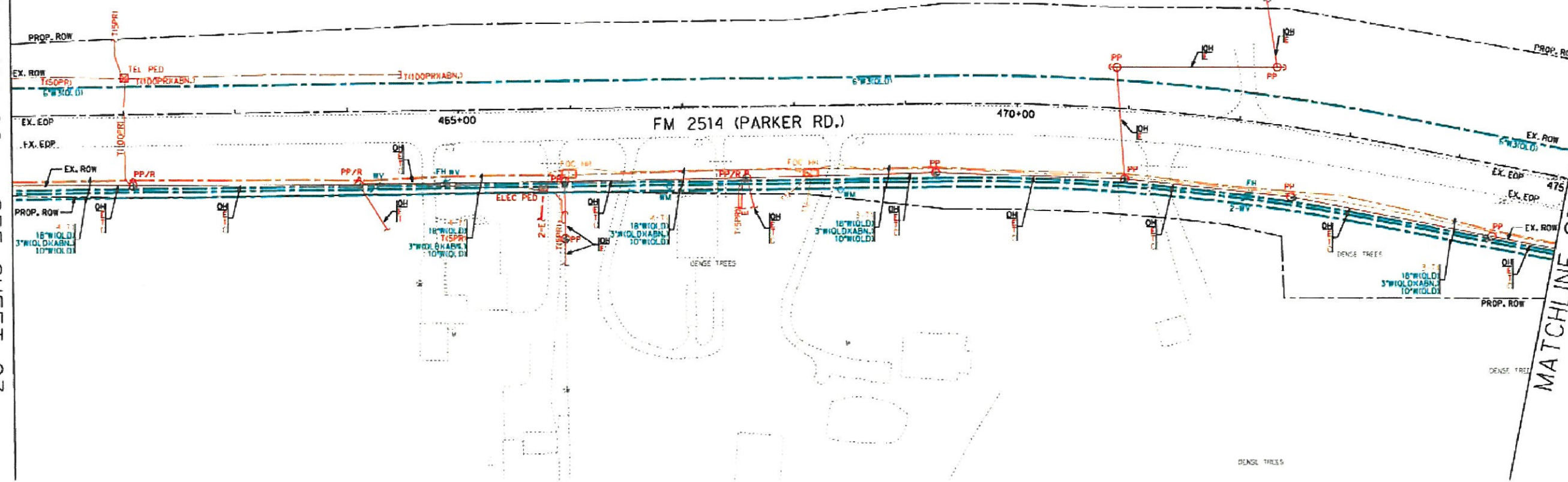


NOTE: LINE SIZES ARE FROM BEST AVAILABLE RECORDS.

SUBSURFACE UTILITY ENGINEERING						
FM 2514						
FROM FM 2551 TO LAVON PKWY.						
TEXAS DEPARTMENT OF TRANSPORTATION						
COLLIN COUNTY, TEXAS						
DESIGN	DRAWN	DATE	SCALE	NOTES	FILE	NO.
HALFF	HALFF	FEBRUARY 2013	1"=100'	200-09 0005	SH-07	07

MATCHLINE STA 461+00 ~ SEE SHEET 07

MATCHLINE STA 475+00 ~ SEE SHEET 09



LEGEND:	
LEVEL 'A'	LEVEL 'B'
TEL PED	TELEPHONE PEDESTAL
TEL CAB	TELEPHONE CABINET
FIBER OPTIC HAND HOLE	FIBER OPTIC HAND HOLE
FIBER OPTIC CANNEL	FIBER OPTIC CANNEL
TELEVISION PEDestal	TELEVISION PEDestal
FH	FIRE HYDRANT
WV	WATER VALVE
WMO	WATER MOTOR
WTR VLT	WATER VAULT
WWMH	WASTEWATER MANHOLE
PP	POWER POLE
PP/R	POWER POLE W/ RISER
TSF	TRAFFIC SIGNAL POLE
HFP	H-FRAME POWER POLE
TEST HOLE	TEST HOLE
TELEPHONE LINE	TELEPHONE LINE
FIBER OPTIC LINE	FIBER OPTIC LINE
CABLE TELEVISION LINE	CABLE TELEVISION LINE
WATER LINE	WATER LINE
WASTEWATER LINE	WASTEWATER LINE
ELECTRIC LINE	ELECTRIC LINE
OVERHEAD UTILITY LINE	OVERHEAD UTILITY LINE
TELEPHONE CONTROL BOX	TELEPHONE CONTROL BOX
ELECTRIC BOX	ELECTRIC BOX
ELECTRIC METER	ELECTRIC METER
LIGHT POLE	LIGHT POLE
GUY WIRE	GUY WIRE
UTILITY CONTINUATION	UTILITY CONTINUATION
UTILITY END POINT	UTILITY END POINT
ABANDONED UTILITY	ABANDONED UTILITY
QUALITY LEVEL B	QUALITY LEVEL B
QUALITY LEVEL C	QUALITY LEVEL C
QUALITY LEVEL D	QUALITY LEVEL D
OVERHEAD UTILITIES	OVERHEAD UTILITIES
EDGE OF PAVEMENT	EDGE OF PAVEMENT
RIGHT-OF-WAY	RIGHT-OF-WAY
CONTROL POINT	CONTROL POINT

OWNERSHIP LEGEND:	OWNER:	CONTACT:	PHONE:
TELEPHONE(T)	VERIZON	DARRIN J. BOX	214-287-2768
FIBER OPTIC CABLE(F1)	VERIZON	DARRIN J. BOX	214-287-2768
FIBER OPTIC CABLE(F2)	VERIZON	DARRIN J. BOX	214-287-2768
CABLE TELEVISION(C)	SPRINK COMMUNICATIONS	CHRIS LANGSTON	972-410-0583
WATER(W)	TIME WARNER CABLE	TIM ADAMS	856-515-9188 x120
WATER(W1)	CITY OF PARKER	JEFF FLANGAN	972-442-6811
WATER(W2)	NORTH TEXAS MUNICIPAL WATER DISTRICT	BOB GUNN	972-442-5405
WATER(W3)	WYLE NORTHEAST WATER SUPPLY CORP.	CHESTER ADAMS	972-442-2075
WASTEWATER(WW)	CITY OF LUCAS	STACY CAIDELL	972-727-8999
ELECTRIC(E)	WYLE NORTHEAST WATER SUPPLY CORP.	CHESTER ADAMS	972-442-2075
	ONCOR ELECTRIC DELIVERY	LARRY TROJAN	214-485-2255

FIELD WORK BEGAN ON MAY 17, 2011 AND WAS COMPLETED JULY 10, 2011. HALFF ASSOCIATES EXPRESSLY DISCLAIMS RESPONSIBILITY FOR NEW UTILITY INSTALLATIONS OR MODIFICATIONS OR ADJUSTMENTS TO EXISTING UTILITIES AFTER JULY 10, 2011.

ALL UTILITY INFORMATION HERE IS DEPICTED TO QUALITY LEVEL 'B' UNLESS OTHERWISE NOTED.

SIZE INFORMATION SHOWN HEREON IS TAKEN FROM AVAILABLE UTILITY RECORDS:

LEVEL 'B' INFORMATION OBTAINED THROUGH THE APPLICATION OF APPROPRIATE SURFACE GEOPHYSICAL METHODS TO DETERMINE THE EXISTENCE AND APPROXIMATE HORIZONTAL POSITION OF UTILITIES.

LEVEL 'C' DEPICTED ACCORDING TO RECORD INFORMATION AND EXISTING ASSOCIATED UTILITY STRUCTURES. NO ELECTRONIC INFORMATION WAS OBTAINED.

LEVEL 'D' DEPICTED ACCORDING TO RECORD INFORMATION. NO ELECTRONIC INFORMATION WAS OBTAINED.

UNLESS OTHERWISE NOTED, UTILITY LINE LIMITS DEPICTED REPRESENT FIELD DESIGNATING LIMITS AND NOT END POINTS OF UTILITIES.

UTILITY INFORMATION LABELED LEVEL 'C' OR 'D' IS DERIVED FROM FURNISHED RECORDS. SUCH INFORMATION MAY NOT BE ACCURATE OR RELIABLE. HALFF ASSOCIATES EXPRESSLY DISCLAIMS RESPONSIBILITY FOR THE ACCURACY OR RELIABILITY OF UTILITY INFORMATION DEPICTED ACCORDING TO RECORDS.

THE ROADWAY AND ROW FILES WERE PROVIDED TO HALFF BY OTHERS AND ARE SHOWN FOR REFERENCE PURPOSES ONLY.

STORM SEWER AND ASSOCIATED APPURTENANCES ARE NOT SHOWN ON THESE PLANS.

WASTEWATER FLOWLINE INFORMATION SHOWN HEREON ARE BASED ON FIELD MEASURED DEPTHS AND SHALL BE DEEMED APPROXIMATE.

TELEPHONE PAIR SIZES SHOWN HEREON ARE SHOWN FOR REFERENCE PURPOSES ONLY.



0 25 50 75 100  
SCALE: 1"=100'

NOTE: LINE SIZES ARE FROM BEST AVAILABLE RECORDS.

**SUBSURFACE UTILITY ENGINEERING**

FM 2514  
FROM FM 2551 TO LAVON PKWY.

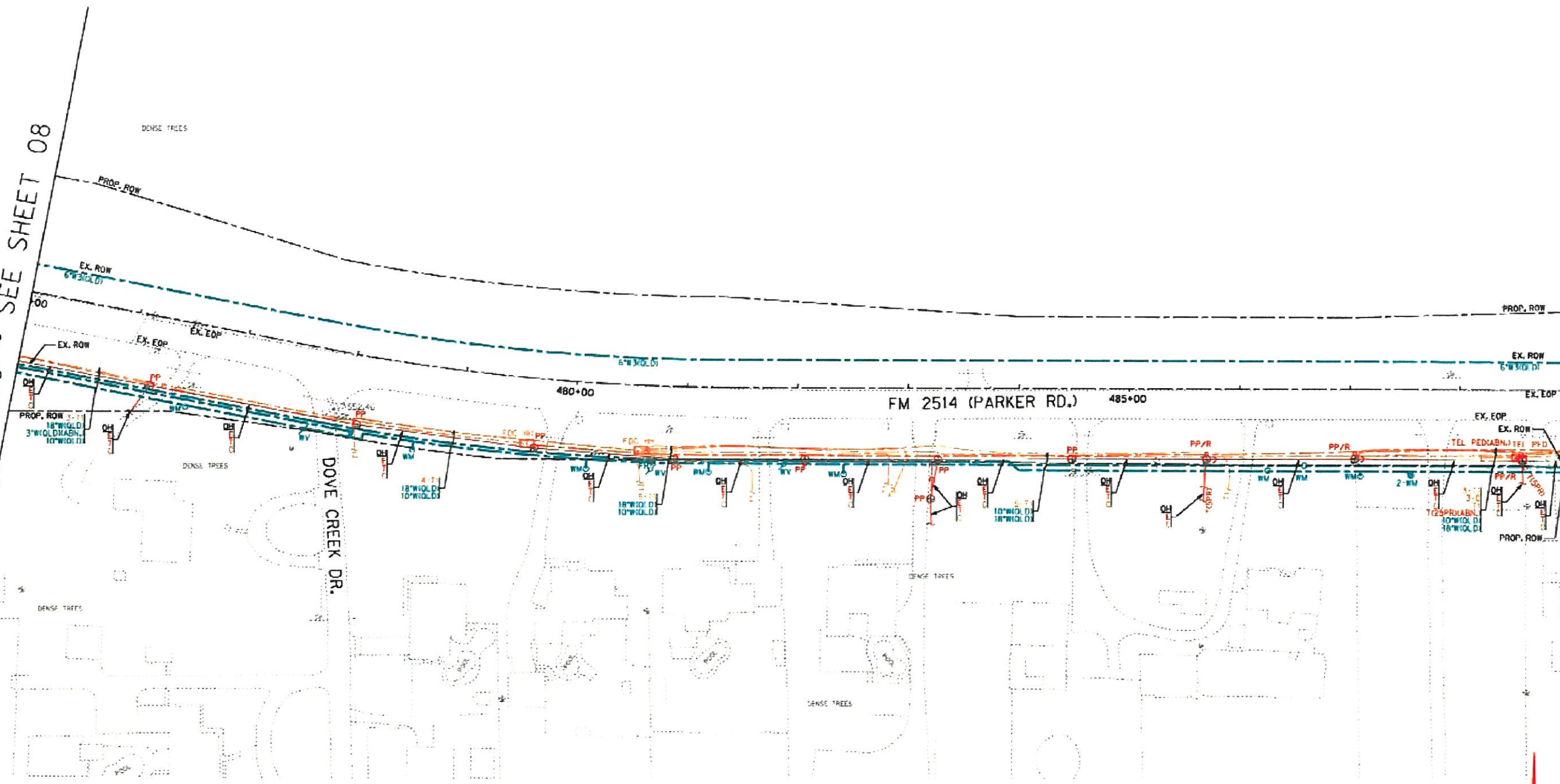
TEXAS DEPARTMENT OF TRANSPORTATION  
COLLIN COUNTY, TEXAS

**HALFF**  
TYPE: PF-312

DESIGN	DRAWN	DATE	SCALE	NOTES	FILE	NO.
HALFF	HALFF	FEBRUARY 2013	1"=100'	28849 0000	SH-08	08

MATCHLINE STA 475+00 ~ SEE SHEET 08

MATCHLINE STA 489+00 ~ SEE SHEET 10



**LEGEND:**

LEVEL 'A'	LEVEL 'B'	LEVEL 'C' & 'D'	
⊙	---	---	TEST HOLE
---	---	---	TELEPHONE LINE
---	---	---	FIBER OPTIC LINE
---	---	---	CABLE TELEVISION LINE
---	---	---	WATER LINE
---	---	---	WASTEWATER LINE
---	---	---	ELECTRIC LINE
---	---	---	OVERHEAD UTILITY LINE
TF1 PFD	⊗	⊗	TELEPHONE PEDESTAL
TF1 CAB	⊗	⊗	TELEPHONE CABINET
FOC H	⊗	⊗	FIBER OPTIC HAND HOLE
FOC CAB	⊗	⊗	FIBER OPTIC CABINET
CATV PED	⊗	⊗	TELEVISION PEDESTAL
FH	⊗	⊗	FIRE HYDRANT
WV	⊗	⊗	WATER VALVE
WM	⊗	⊗	WATER METER
WTR VLT	⊗	⊗	WATER VALVE
WTRMH	⊗	⊗	WASTEWATER MANHOLE
PP	⊗	⊗	POWER POLE
PP/R	⊗	⊗	POWER POLE W/RISER
TSP	⊗	⊗	TRAFFIC SIGNAL POLE
HFP	⊗	⊗	H-FRAME POWER POLE
TCB	⊗	⊗	TRAFFIC CONTROL BOX
EB	⊗	⊗	ELECTRIC BOX
EMFR	⊗	⊗	ELECTRIC METER
LP	⊗	⊗	LIGHT POLE
DUY WIRE	⊗	⊗	UTILITY CONTINUATION
U	⊗	⊗	UTILITY END POINT
ABN	⊗	⊗	ABANDONED UTILITY
Q(L)B	⊗	⊗	QUALITY LEVEL B
Q(L)C	⊗	⊗	QUALITY LEVEL C
Q(L)D	⊗	⊗	QUALITY LEVEL D
OH	⊗	⊗	OVER-HEAD UTILITIES
EOP	⊗	⊗	EDGE OF PAVEMENT
ROW	⊗	⊗	RIGHT-OF-WAY
CP	⊗	⊗	CONTROL POINT

Level 'B'	3211	ft
Level 'D'	3179	ft
% of Level 'B'	69	%

**OWNERSHIP LEGEND:**

OWNER:	CONTACT:	PHONE:
TELEPHONE(T)	= VERIZON	DIAN L. BOY 214-287-2768
FIBER OPTIC (CABLE(T))	= VERIZON	DIAN L. BOY 214-287-2768
FIBER OPTIC (CABLE(D))	= GRANITE COMMUNICATIONS	CHRIS LANGSTON 972-410-0863
CABLE TELEVISION(C)	= TIME WARNER CABLE	TIM ADAMS 888-519-9188 x120
WATER(W)	= CITY OF PARKER	JEFF FLANGAN 972-442-6811
WATER(W1)	= NORTH TEXAS MUNICIPAL WATER DISTRICT	BOB GUNN 972-442-5405
WATER(W2)	= WYLE NORTHEAST WATER SUPPLY CORP.	CHESTER ADAMS 972-442-2075
WATER(W3)	= CITY OF LUCAS	STACY CAUDELL 972-727-8999
WASTEWATER(W)	= WYLE NORTHEAST WATER SUPPLY CORP.	CHESTER ADAMS 972-442-2075
ELECTRIC(E)	= ONCOR ELECTRIC DELIVERY	LARRY TROJAN 214-486-2255

FIELD WORK BEGAN ON MAY 17, 2011 AND WAS COMPLETED JULY 10, 2011. HALFF ASSOCIATES EXPRESSLY DISCLAIMS RESPONSIBILITY FOR NEW UTILITY INSTALLATIONS OR MODIFICATIONS OR ADJUSTMENTS TO EXISTING UTILITIES AFTER JULY 10, 2011.

ALL UTILITY INFORMATION HERE IS DEPICTED TO QUALITY LEVEL 'B' UNLESS OTHERWISE NOTED.

SIZE INFORMATION SHOWN HEREON IS TAKEN FROM AVAILABLE UTILITY RECORDS:

LEVEL 'B' INFORMATION OBTAINED THROUGH THE APPLICATION OF APPROPRIATE SURFACE GEOPHYSICAL METHODS TO DETERMINE THE EXISTENCE AND APPROXIMATE HORIZONTAL POSITION OF UTILITIES.

LEVEL 'C' DEPICTED ACCORDING TO RECORD INFORMATION AND EXISTING ASSOCIATED UTILITY STRUCTURES. NO ELECTRONIC INFORMATION WAS OBTAINED.

LEVEL 'D' DEPICTED ACCORDING TO RECORD INFORMATION. NO ELECTRONIC INFORMATION WAS OBTAINED.

UNLESS OTHERWISE NOTED, UTILITY LINE LIMITS DEPICTED REPRESENT FIELD DESIGNATING LIMITS AND NOT END POINTS OF UTILITIES.

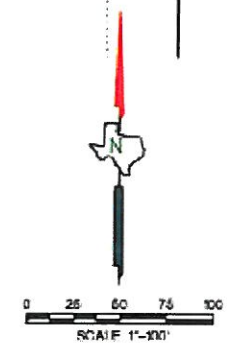
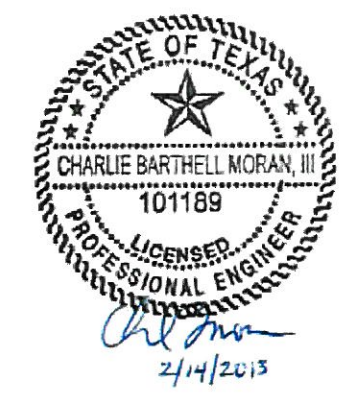
UTILITY INFORMATION LABELED LEVEL 'C' OR 'D' IS DERIVED FROM FURNISHED RECORDS. SUCH INFORMATION MAY NOT BE ACCURATE OR RELIABLE. HALFF ASSOCIATES EXPRESSLY DISCLAIMS RESPONSIBILITY FOR THE ACCURACY OR RELIABILITY OF UTILITY INFORMATION DEPICTED ACCORDING TO RECORDS.

THE ROADWAY AND ROW FILES WERE PROVIDED TO HALFF BY OTHERS AND ARE SHOWN FOR REFERENCE PURPOSES ONLY.

STORM SEWER AND ASSOCIATED APPURTENANCES ARE NOT SHOWN ON THESE PLANS.

WASTEWATER FLOWLINE INFORMATION SHOWN HEREON ARE BASED ON FIELD MEASURED DEPTHS AND SHALL BE DEEMED APPROXIMATE.

TELEPHONE PAIR SIZES SHOWN HEREON ARE SHOWN FOR REFERENCE PURPOSES ONLY.

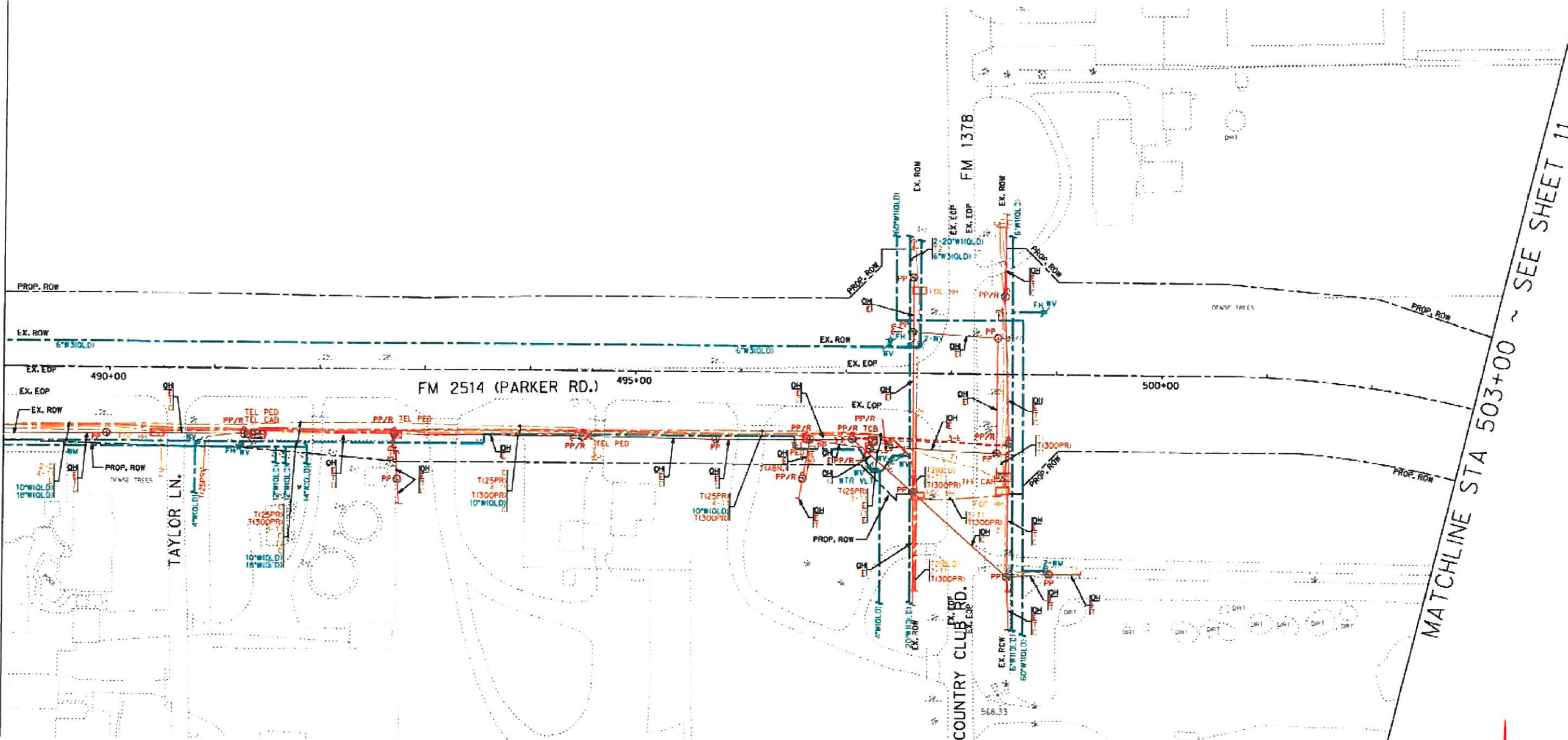


NOTE: LINE SIZES ARE FROM BEST AVAILABLE RECORDS.

<b>SUBSURFACE UTILITY ENGINEERING</b>						
FM 2514						
FROM FM 2551 TO LAVON PKWY.						
TEXAS DEPARTMENT OF TRANSPORTATION						
COLLIN COUNTY, TEXAS						
<b>HALFF</b>						
TBPE #F-312						
DESIGN	DRAWN	DATE	SCALE	NOTES	FILE	NO.
HALFF	HALFF	FEBRUARY 2013	1"=100'	2848 0005	SH-09	09

MATCHLINE STA 489+00 ~ SEE SHEET 09

MATCHLINE STA 503+00 ~ SEE SHEET 11



LEVEL 'A'	LEVEL 'B'	LEVEL 'C' & 'D'	
[Symbol]	[Symbol]	[Symbol]	TEST HOLE
[Symbol]	[Symbol]	[Symbol]	TELEPHONE LINE
[Symbol]	[Symbol]	[Symbol]	FIBER OPTIC LINE
[Symbol]	[Symbol]	[Symbol]	CABLE TELEVISION LINE
[Symbol]	[Symbol]	[Symbol]	WATER LINE
[Symbol]	[Symbol]	[Symbol]	WASTEWATER LINE
[Symbol]	[Symbol]	[Symbol]	ELECTRIC LINE
[Symbol]	[Symbol]	[Symbol]	OVERHEAD UTILITY LINE
TEL PED	TELEPHONE PEDestal	TFCB	TRAFFIC CONTROL BOX
TEL CAB	TELEPHONE CABINET	EB	ELECTRIC BOX
FOC MH	FIBER OPTIC HAND HOLE	EM	ELECTRIC METER
FCO CAB	FIBER OPTIC CABINET	LP	LIGHT POLE
CATV PED	TELEVISION PEDestal	F	GUY WIRE
FH	FIRE HYDRANT	U	UTILITY CONTINUATION
WV	WATER VALVE	E	UTILITY END POINT
WMO	WATER METER	ABN	ABANDONED UTILITY
WTR VLT	WATER VALVE	(QLB)	QUALITY LEVEL B
WMMH	WASTEWATER MANHOLE	(QLC)	QUALITY LEVEL C
PP	POWER POLE	(QLD)	QUALITY LEVEL D
PP/R	POWER POLE W/RISE	OH	OVERHEAD UTILITIES
TSP	TRAFFIC SIGNAL POLE	EO	EDGE OF PAVEMENT
HFPF	H-FRAME POWER HOLE	ROW	RIGHT-OF-WAY
		CP	CONTR. POINT

Level 'B' 8312 +/-  
 Level 'D' 2061 +/-  
 % of Level 'B' 80 %

OWNERSHIP LEGEND:	OWNER:	CONTACT:	PHONE:
TELEPHONE(B)	- VERIZON	DARIN E. BOX	214-287-2768
FIBER OPTIC CABLE(T)	- VERIZON	DARIN E. BOX	214-287-2768
FIBER OPTIC CABLE(T2)	- QUANTUM COMMUNICATIONS	CHRIS J. ANGSTON	972-470-0563
CABLE TELEVISION(C)	- TIME WARNER CABLE	TIM ADAMS	888-575-9188 x120
WATER(W)	- CITY OF PARKER	JEFF FLANGAN	972-442-6811
WATER(W1)	- NORTH TEXAS MUNICIPAL WATER DISTRICT	BOB GUNN	972-442-5405
WATER(W2)	- WYLLIE NORTHEAST WATER SUPPLY CORP.	CHESTER ADAMS	972-442-2075
WATER(W3)	- CITY OF LUCAS	STACY CALDELL	972-727-8995
WASTEWATER(WW)	- WYLLIE NORTHEAST WATER SUPPLY CORP.	CHESTER ADAMS	972-442-2075
ELECTRIC(E)	- ONCOR ELECTRIC DELIVERY	LARRY TROJAN	214-486-2255

FIELD WORK BEGAN ON MAY 17, 2011 AND WAS COMPLETED JULY 10, 2011. HALFF ASSOCIATES EXPRESSLY DISCLAIMS RESPONSIBILITY FOR NEW UTILITY INSTALLATIONS OR MODIFICATIONS OR ADJUSTMENTS TO EXISTING UTILITIES AFTER JULY 10, 2011.

ALL UTILITY INFORMATION HERE IS DEPICTED TO QUALITY LEVEL 'B' UNLESS OTHERWISE NOTED.

SIZE INFORMATION SHOWN HEREON IS TAKEN FROM AVAILABLE UTILITY RECORDS.

LEVEL 'B' INFORMATION OBTAINED THROUGH THE APPLICATION OF APPROPRIATE SURFACE GEOPHYSICAL METHODS TO DETERMINE THE EXISTENCE AND APPROXIMATE HORIZONTAL POSITION OF UTILITIES.

LEVEL 'C' DEPICTED ACCORDING TO RECORD INFORMATION AND EXISTING ASSOCIATED UTILITY STRUCTURES. NO ELECTRONIC INFORMATION WAS OBTAINED.

LEVEL 'D' DEPICTED ACCORDING TO RECORD INFORMATION. NO ELECTRONIC INFORMATION WAS OBTAINED.

UNLESS OTHERWISE NOTED, UTILITY LINE LIMITS DEPICTED REPRESENT FIELD DESIGNATING LIMITS AND NOT END POINTS OF UTILITIES.

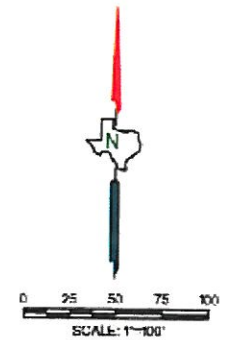
UTILITY INFORMATION LABELED LEVEL 'C' OR 'D' IS DERIVED FROM FURNISHED RECORDS. SUCH INFORMATION MAY NOT BE ACCURATE OR RELIABLE. HALFF ASSOCIATES EXPRESSLY DISCLAIMS RESPONSIBILITY FOR THE ACCURACY OR RELIABILITY OF UTILITY INFORMATION DEPICTED ACCORDING TO RECORDS.

THE ROADWAY AND ROW FILES WERE PROVIDED TO HALFF BY OTHERS AND ARE SHOWN FOR REFERENCE PURPOSES ONLY.

STORM SEWER AND ASSOCIATED APPURTENANCES ARE NOT SHOWN ON THESE PLANS.

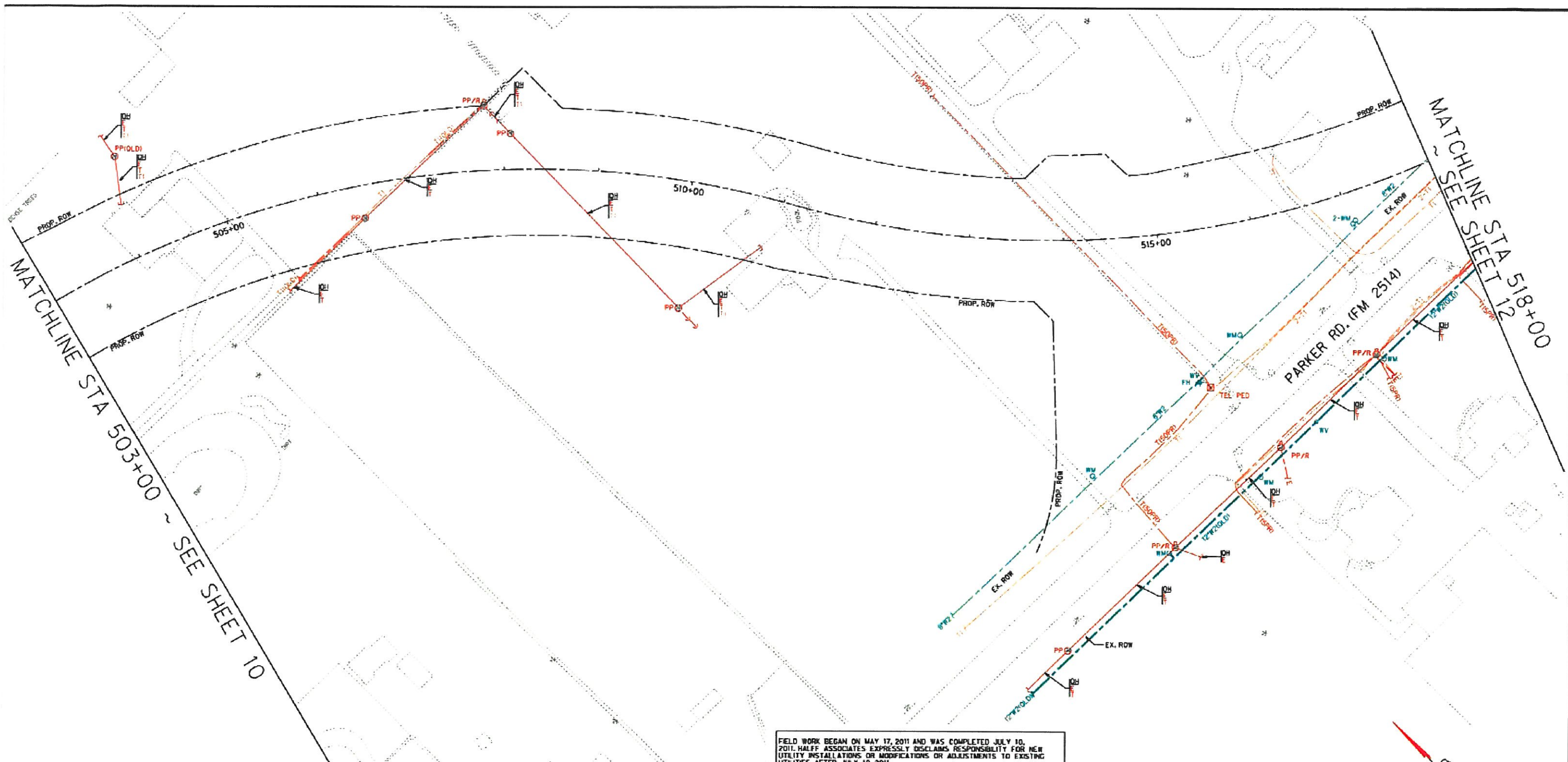
WASTEWATER FLOWLINE INFORMATION SHOWN HEREON ARE BASED ON FIELD MEASURED DEPTHS AND SHALL BE DEEMED APPROXIMATE.

TELEPHONE PAIR SIZES SHOWN HEREON ARE SHOWN FOR REFERENCE PURPOSES ONLY.



NOTE: LINE SIZES ARE FROM BEST AVAILABLE RECORDS.

SUBSURFACE UTILITY ENGINEERING					
FM 2514					
FROM FM 2551 TO LAVON PKWY.					
TEXAS DEPARTMENT OF TRANSPORTATION					
COLLIN COUNTY, TEXAS					
TRPE #F-312					
DESIGN	DRAWN	DATE	SCALE	NOTES	FILE NO.
HALFF	HALFF	FEBRUARY 2013	1"=100'	20048 WOOD	SH-10 10



LEGEND:			
LEVEL 'A'	LEVEL 'B'	LEVEL 'C' & 'D'	
			TEST HOLE
			TELEPHONE LINE
			FIBER OPTIC LINE
			CABLE TELEVISION LINE
			WATER LINE
			WASTEWATER LINE
			ELECTRIC LINE
			OVERHEAD UTILITY LINE
TFL PED	TEL PED/ST	TCB	TRAFFIC CONTROL BOX
TFL CAB	TELEPHONE CABINET	EB	ELECTRIC BOX
FOC H	FIBER OPTIC HAND HOLE	EM	ELECTRIC METER
FOC CAB	FIBER OPTIC CABINET	LP	LIGHT POLE
CATV PED	TELEVISION PEDESTAL	LP	GUY WIRE
FH	FIRE HYDRANT	U	UTILITY CONTINUATION
WV	WATER VALVE	E	UTILITY END POINT
WM	WATER METER	ABN	ABANDONED UTILITY
WTR VLT	WATER VALVE	(QLB)	QUALITY LEVEL B
WWMH	WASTEWATER MANHOLE	(QLC)	QUALITY LEVEL C
PP	POWER POLE	(QLD)	QUALITY LEVEL D
PP/R	POWER POLE W/ RISER	OH	OVERHEAD UTILITIES
TSP	TRAFFIC SIGNAL POLE	LUP	EDGE OF PAVEMENT
HTPP	H-FRAME POWER POLE	ROW	RIGHT-OF-WAY
		CP	CONTROL POINT

Level 'B'	3757	f1
Level 'D'	799	f1
2 of Level 'B'	82	2

OWNERSHIP LEGEND:	OWNER:	CONTACT:	PHONE:
TELEPHONE(T)	VERIZON	DARRIN E. BOX	214-287-2768
FIBER OPTIC CABLE(F)	VERIZON	DARRIN E. BOX	214-287-2768
FIBER OPTIC CABLE(T)	ORANGE COMMUNICATIONS	CHRIS LANOSTON	972-410-0885
CABLE TELEVISION(C)	TIME WARNER CABLE	TAM ADAMS	888-538-9188 x120
WATER(W)	CITY OF PARKER	JILL FLANNAGAN	972-442-6811
WATER(W1)	NORTH TEXAS MUNICIPAL WATER DISTRICT	BOB QUINN	972-442-5405
WATER(W2)	WYLIE NORTHEAST WATER SUPPLY CORP.	CHESTER ADAMS	972-442-2075
WATER(W3)	CITY OF LUCAS	STACY CALDELL	972-727-8999
WASTEWATER(WW)	WYLIE NORTHEAST WATER SUPPLY CORP.	CHESTER ADAMS	972-442-2075
ELECTRIC(E)	ONCOR ELECTRIC DELIVERY	LARRY TROJAN	214-486-2255

FIELD WORK BEGAN ON MAY 17, 2011 AND WAS COMPLETED JULY 10, 2011. HALFF ASSOCIATES EXPRESSLY DISCLAIMS RESPONSIBILITY FOR NEW UTILITY INSTALLATIONS OR MODIFICATIONS OR ADJUSTMENTS TO EXISTING UTILITIES AFTER JULY 10, 2011.

ALL UTILITY INFORMATION HERE IS DEPICTED TO QUALITY LEVEL 'B' UNLESS OTHERWISE NOTED.

SIZE INFORMATION SHOWN HEREON IS TAKEN FROM AVAILABLE UTILITY RECORDS.

LEVEL 'B' INFORMATION OBTAINED THROUGH THE APPLICATION OF APPROPRIATE SURFACE GEOPHYSICAL METHODS TO DETERMINE THE EXISTENCE AND APPROXIMATE HORIZONTAL POSITION OF UTILITIES.

LEVEL 'C' DEPICTED ACCORDING TO RECORD INFORMATION AND EXISTING ASSOCIATED UTILITY STRUCTURES. NO ELECTRONIC INFORMATION WAS OBTAINED.

LEVEL 'D' DEPICTED ACCORDING TO RECORD INFORMATION. NO ELECTRONIC INFORMATION WAS OBTAINED.

UNLESS OTHERWISE NOTED, UTILITY LINE LIMITS DEPICTED REPRESENT FIELD DESIGNATING LIMITS AND NOT END POINTS OF UTILITIES.

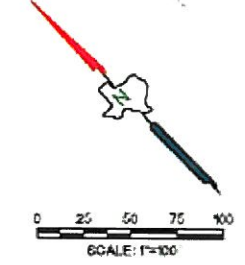
UTILITY INFORMATION LABELED LEVEL 'C' OR 'D' IS DERIVED FROM FURNISHED RECORDS. SUCH INFORMATION MAY NOT BE ACCURATE OR RELIABLE. HALFF ASSOCIATES EXPRESSLY DISCLAIMS RESPONSIBILITY FOR THE ACCURACY OR RELIABILITY OF UTILITY INFORMATION DEPICTED ACCORDING TO RECORDS.

THE ROADWAY AND ROW FILES WERE PROVIDED TO HALFF BY OTHERS AND ARE SHOWN FOR REFERENCE PURPOSES ONLY.

STORM SEWER AND ASSOCIATED APPURTENANCES ARE NOT SHOWN ON THESE PLANS.

WASTEWATER FLOORLINE INFORMATION SHOWN HEREON ARE BASED ON FIELD MEASURED DEPTHS AND SHALL BE DEEMED APPROXIMATE.

TELEPHONE PAIR SIZES SHOWN HEREON ARE SHOWN FOR REFERENCE PURPOSES ONLY.



NOTE: LINE SIZES ARE FROM BEST AVAILABLE RECORDS.

SUBSURFACE UTILITY ENGINEERING					
FM 2514					
FROM FM 2551 TO LAVON PKWY.					
TEXAS DEPARTMENT OF TRANSPORTATION					
COLLIN COUNTY, TEXAS					
 TRPE #E-312					
DESIGN	DRAWN	DATE	SCALE	NOTES	FILE NO.
HALFF	HALFF	FEBRUARY 2013	1"=100'	28848 0005	SH-11 11

MATCHLINE STA 518+00 ~ SEE SHEET 11

PECAN DR. (CR 304)

FM 2514 (PARKER RD.)

LAVON PKWY.

**LEGEND:**

LEVEL "A"	LEVEL "B"	LEVEL "C" & "D"	TEST HOLE
TEL PED	TEL CAB	FOC CAB	TELEPHONE LINE
CATV PED	WTR VLT	WWMH	FIBER OPTIC LINE
PP/R	PP	PP	CABLE TELEVISION LINE
HFP			WATER LINE
			WASTEWATER LINE
			ELECTRIC LINE
			OVERHEAD UTILITY LINE
TEL CAB	TEL CAB	TEL CAB	TCB
FOC CAB	FOC CAB	FOC CAB	ED
CATV PED	CATV PED	CATV PED	EM
PP/R	PP/R	PP/R	LP
PP	PP	PP	UTILITY CONTINUATION
HFP	HFP	HFP	UTILITY END POINT
			ABANDONED UTILITY
			QUALITY LEVEL B
			QUALITY LEVEL C
			QUALITY LEVEL D
			OVERHEAD UTILITIES
			EDGE OF PAVEMENT
			RIGHT-OF-WAY
			CONTROL POINT

Level "B"	5035	ft
Level "D"	1135	ft
% of Level "B"	81	%

**OWNERSHIP LEGEND:**

OWNER:	CONTACT:	PHONE:
TELEPHONE(C)	DARRIN E. BOY	214-287-2768
FIBER OPTIC CABLE(T)	DARRIN E. BOY	214-287-2768
FIBER OPTIC CABLE(T2)	CHRIS LANGSTON	972-410-0587
CABLE TELEVISION(C)	TIM ADAMS	888-516-9188 x120
WATER(W)	JEFF FLANGAN	972-442-6911
WATER(W1)	BOB QUINN	972-442-5405
WATER(W2)	CHESTER ADAMS	972-442-2075
WATER(W3)	STACY CAIDELL	972-727-8999
WASTEWATER(W)	CHESTER ADAMS	972-442-2075
ELECTRIC(E)	LARRY TROJAN	214-486-2255
	DUNCOR ELECTRIC DELIVERY	

FIELD WORK BEGAN ON MAY 17, 2011 AND WAS COMPLETED JULY 10, 2011. HALFF ASSOCIATES EXPRESSLY DISCLAIMS RESPONSIBILITY FOR NEW UTILITY INSTALLATIONS OR MODIFICATIONS OR ADJUSTMENTS TO EXISTING UTILITIES AFTER JULY 10, 2011.

ALL UTILITY INFORMATION HERE IS DEPICTED TO QUALITY LEVEL "B" UNLESS OTHERWISE NOTED.

SIZE INFORMATION SHOWN HEREON IS TAKEN FROM AVAILABLE UTILITY RECORDS:

LEVEL "B" INFORMATION OBTAINED THROUGH THE APPLICATION OF APPROPRIATE SURFACE GEOPHYSICAL METHODS TO DETERMINE THE EXISTENCE AND APPROXIMATE HORIZONTAL POSITION OF UTILITIES.

LEVEL "C" DEPICTED ACCORDING TO RECORD INFORMATION AND EXISTING ASSOCIATED UTILITY STRUCTURES. NO ELECTRONIC INFORMATION WAS OBTAINED.

LEVEL "D" DEPICTED ACCORDING TO RECORD INFORMATION. NO ELECTRONIC INFORMATION WAS OBTAINED.

UNLESS OTHERWISE NOTED, UTILITY LINE LIMITS DEPICTED REPRESENT FIELD DESIGNATING LIMITS AND NOT END POINTS OF UTILITIES.

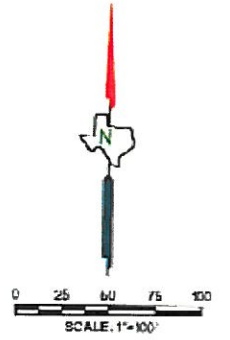
UTILITY INFORMATION LABELED LEVEL "C" OR "D" IS DERIVED FROM FURNISHED RECORDS. SUCH INFORMATION MAY NOT BE ACCURATE OR RELIABLE. HALFF ASSOCIATES EXPRESSLY DISCLAIMS RESPONSIBILITY FOR THE ACCURACY OR RELIABILITY OF UTILITY INFORMATION DEPICTED ACCORDING TO RECORDS.

THE ROADWAY AND ROW FILES WERE PROVIDED TO HALFF BY OTHERS AND ARE SHOWN FOR REFERENCE PURPOSES ONLY.

STORM SEWER AND ASSOCIATED APPURTENANCES ARE NOT SHOWN ON THESE PLANS.

WASTEWATER FLOWLINE INFORMATION SHOWN HEREON ARE BASED ON FIELD MEASURED DEPTHS AND SHALL BE DEEMED APPROXIMATE.

TELEPHONE PAIR SIZES SHOWN HEREON ARE SHOWN FOR REFERENCE PURPOSES ONLY.



NOTE: LINE SIZES ARE FROM BEST AVAILABLE RECORDS.

**SUBSURFACE UTILITY ENGINEERING**

FM 2514  
FROM FM 2551 TO LAVON PKWY.

TEXAS DEPARTMENT OF TRANSPORTATION  
COLLIN COUNTY, TEXAS

**HALFF**  
TBPE #E-312

DESIGN	DRAWN	DATE	SCALE	NOTES	FILE	NO.
HALFF	HALFF	FEBRUARY 2013	1"=100'	28848 8005	SH-12	12