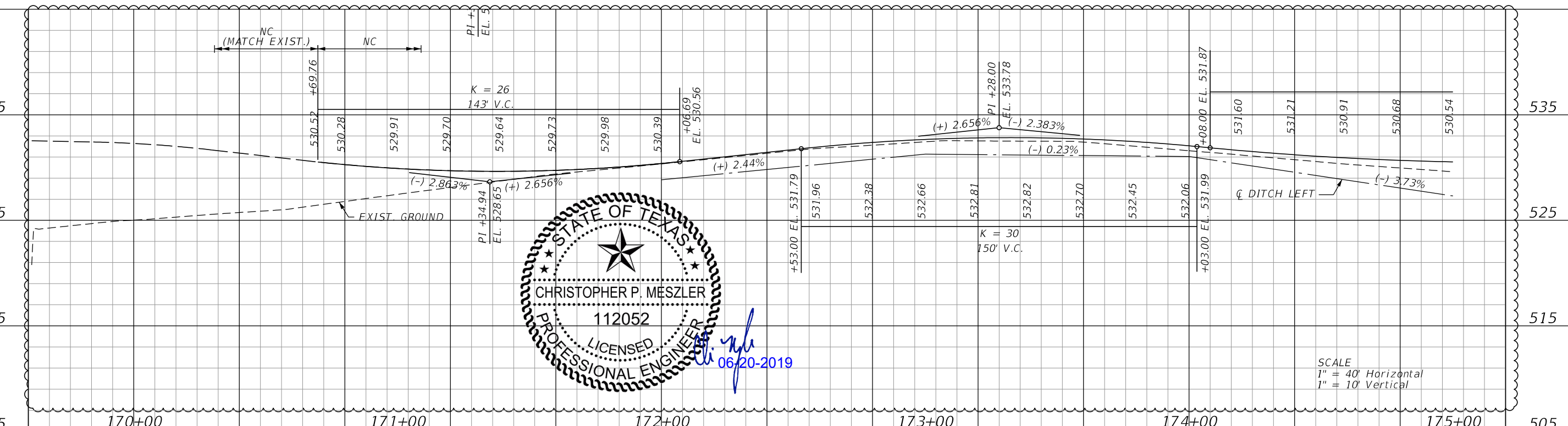
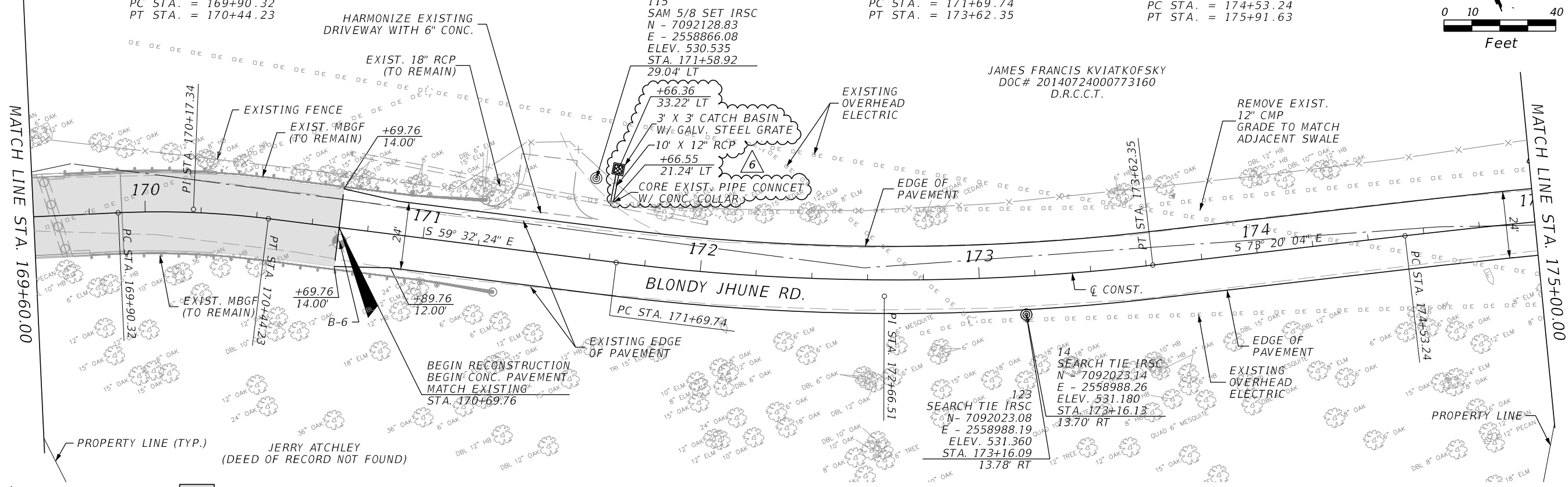


CURVE DATA CL15
 PI STA. = 170+17.34
 Δ = 9° 50' 19" (RT)
 D = 18° 14' 59"
 T = 27.02
 L = 53.91
 R = 313.95
 PC STA. = 169+90.32
 PT STA. = 170+44.23

CURVE DATA CL16
 PI STA. = 172+66.51
 Δ = 13° 47' 40" (LT)
 D = 7° 09' 43"
 T = 96.77
 L = 192.61
 R = 800.00
 PC STA. = 171+69.74
 PT STA. = 173+62.35

CURVE DATA CL17
 PI STA. = 175+22.45
 Δ = 3° 10' 18" (RT)
 D = 2° 17' 31"
 T = 69.21
 L = 138.38
 R = 2,500.00
 PC STA. = 174+53.24
 PT STA. = 175+91.63



STATE OF TEXAS
 CHRISTOPHER P. MESZLER
 112052
 LICENSED PROFESSIONAL ENGINEER
 06-20-2019

i:\hogness
 6/20/2019
 PLOT DATE: 8:22:06 AM
 LAST SAVED: 8:22:06 AM
 LOCATION: T:\17-113 Blondy Jhune\1800457\4 - Design\Plan Set\3. Roadway\pav\p1anp12.dgn

REVISIONS	
DATE	DESCRIPTION
04/02/19	3 MODIFIED TEXT LABEL & ADDED DITCH PROFILES
06/02/19	6 ADDED RCP & CATCH BASIN

LAKES ENGINEERING, INC.

CHRISTOPHER P. MESZLER, P.E.
 LIC. No. 112052
 1903 CENTRAL DRIVE, SUITE #405
 BEDFORD, TX 76021
 PHONE: 817.618.3640
 TBPE REG. F-15243

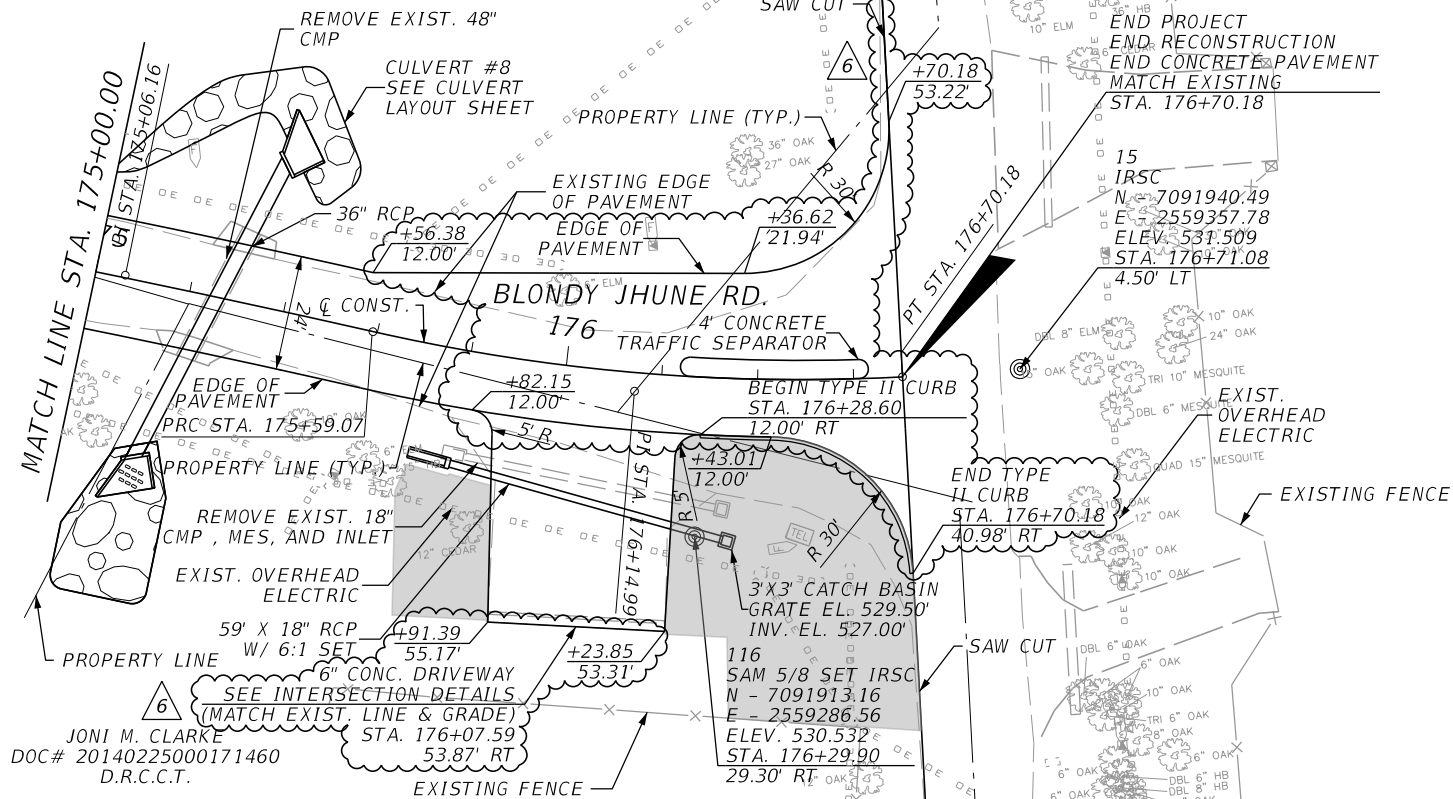
BLONDY JHUNE RD. RECONST.
 CITY OF LUCAS
 PUBLIC WORKS DEPARTMENT
 665 COUNTRY CLUB ROAD
 LUCAS, TX. 75002

PLAN & PROFILE

SHEET NO.
 20

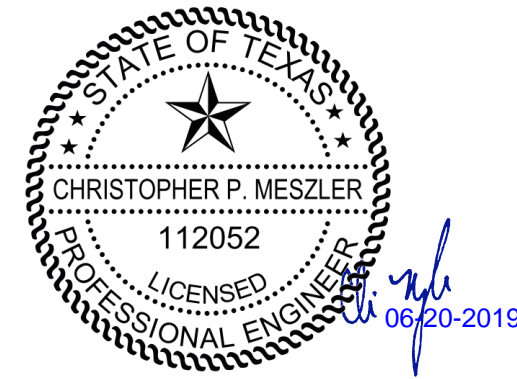
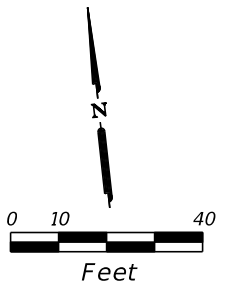
CALL BEFORE YOU DIG
 TEXAS ONE CALL PARTICIPANTS REQUEST
 48 HOURS NOTICE BEFORE YOU DIG, DRILL,
 OR BLAST - STOP CALL
 TEXAS ONE CALL SYSTEM
 1-800-DIG-1155

JAMES FRANCIS KVIATKOFSKY
 DOC# 20140724000773160
 D.R.C.C.T.



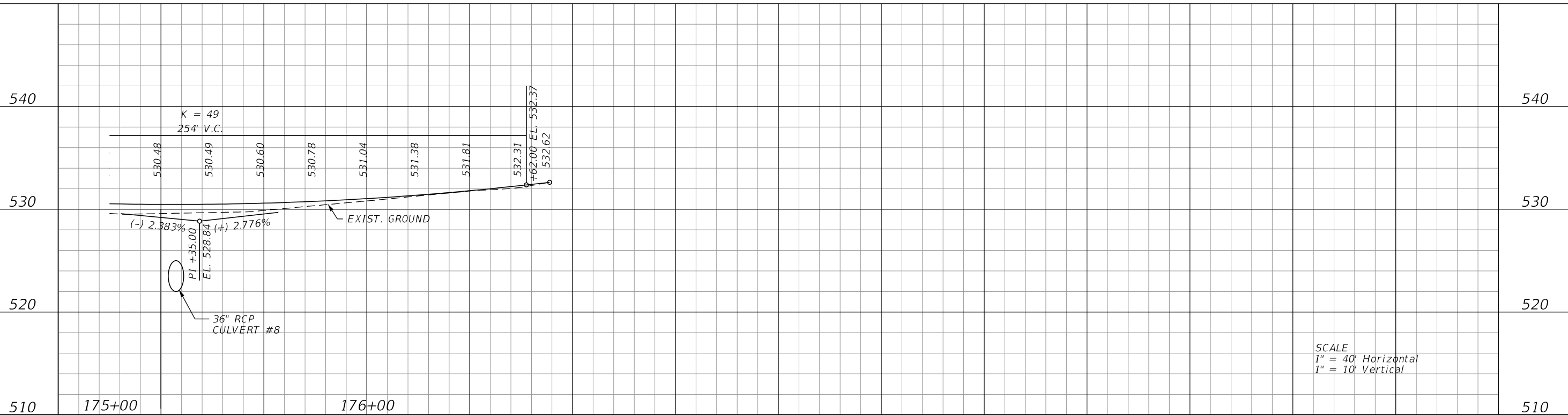
CURVE DATA CL17
 PI STA. = 175+06.16
 Δ = 2° 25' 32" (RT)
 D = 2° 17' 31"
 T = 52.92
 L = 105.83
 R = 2,500.00
 PC STA. = 174+53.24
 PT STA. = 175+59.07

CURVE DATA CL18
 PI STA. = 176+14.99
 Δ = 15° 54' 41" (LT)
 D = 14° 19' 14"
 T = 55.91
 L = 111.11
 R = 400.09
 PC STA. = 175+59.07
 PT STA. = 176+70.18



LEGEND:

- GRADE TO DRAIN, SOD ALL DISTURBED AREAS (SEE GRADING PLANS)
- ASPHALT PAVEMENT (TO BE REMOVED)



SCALE
 1" = 40' Horizontal
 1" = 10' Vertical

PLOTTED BY: jhoggess
 PLOT DATE: 6/20/2019
 LAST SAVED: 8:22:09 AM
 LOCATION: T:\17-113 Blondy Jhune\1800457\4 - Design\Plan Set\3. Roadway\pav\p13.dgn

REVISIONS	
DATE	DESCRIPTION
06/02/19	6 MODIFIED ROADWAY/DRIVEWAY



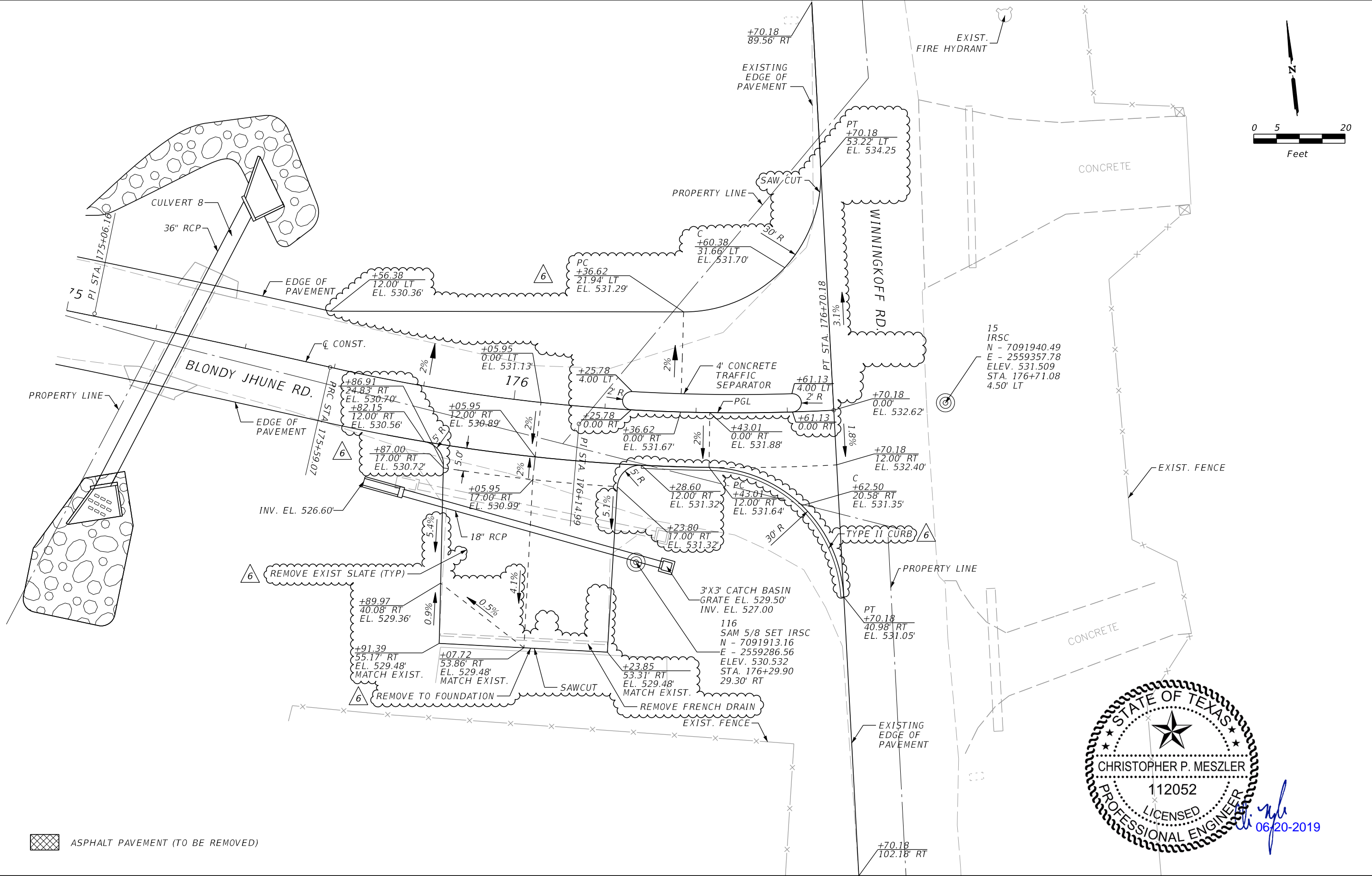
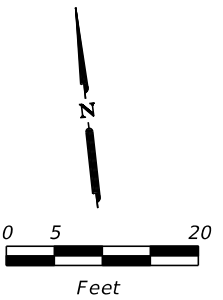
CHRISTOPHER P. MESZLER, P.E.
 LIC. No. 112052
 1903 CENTRAL DRIVE, SUITE #405
 BEDFORD, TX 76021
 PHONE: 817.618.3640
 TBPE REG. F-15243

BLONDY JHUNE RD. RECONST.
 CITY OF LUCAS
 PUBLIC WORKS DEPARTMENT
 665 COUNTRY CLUB ROAD
 LUCAS, TX. 75002

PLAN & PROFILE

SHEET NO.
 21

CALL BEFORE YOU DIG
 TEXAS ONE CALL PARTICIPANTS REQUEST
 48 HOURS NOTICE BEFORE YOU DIG, DRILL,
 OR BLAST - STOP CALL
 TEXAS ONE CALL SYSTEM
 1-800-DIG-1-ESS



ASPHALT PAVEMENT (TO BE REMOVED)

STATE OF TEXAS
 CHRISTOPHER P. MESZLER
 112052
 LICENSED PROFESSIONAL ENGINEER
 06/20-2019

i:\hogness
 6/20/2019
 PLOT DATE:
 8:22:10 AM
 LAST SAVED:
 T:\17-113 Blondy Jhune\1800457\4 - Design\Plan Set\3. Roadway\intdrd03.DGN

REVISIONS	
DATE	DESCRIPTION
06/02/19	6 MODIFIED ROADWAY/DRIVEWAY & ADDED TEXT LABELS

LAKES
 ENGINEERING, INC.

CHRISTOPHER P. MESZLER, P.E.
 LIC. No. 112052
 1903 CENTRAL DRIVE, SUITE #405
 BEDFORD, TX 76021
 PHONE: 817.618.3640
 TBPE REG. F-15243

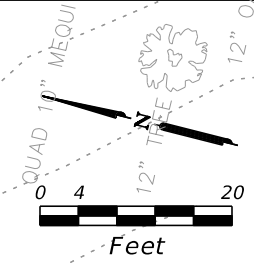


BLONDY JHUNE RD. RECONST.
 CITY OF LUCAS
 PUBLIC WORKS DEPARTMENT
 665 COUNTRY CLUB ROAD
 LUCAS, TX. 75002

INTERSECTION DETAILS

SHEET NO.
 23

CALL BEFORE YOU DIG
 TEXAS ONE CALL PARTICIPANTS REQUEST
 48 HOURS NOTICE BEFORE YOU DIG, DRILL,
 OR BLAST - STOP CALL
 TEXAS ONE CALL SYSTEM
 1-800-DIG-1155



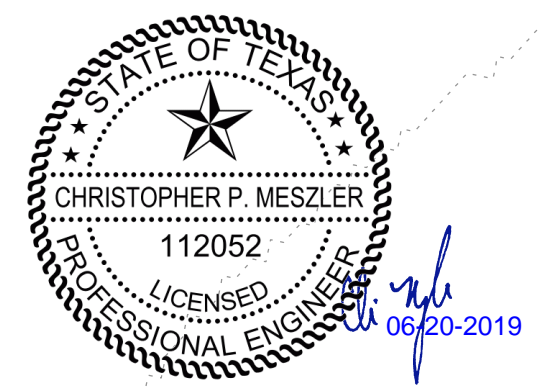
CORE EXIST. PIPE
CONNECT W/ CONC.
COLLAR

+65.55
21.24' LT

+66.36
33.22' LT
GRATE EL 528.86

3' X 3' CATCH BASIN
W/ GALV. STEEL GRATE

10' X 12" RCP



NOTE:
ALL TREES 6" DIAMETER AND GREATER SHALL REMAIN AND BE PROTECTED.

3' X 3' CATCH BASIN

ihogress
6/20/2019
PLOT DATE: 8:22:12 AM
LAST SAVED:
LOCATION: T:\17-113 Blondy Jhune\1800457\4 - Design\Plan Set\5. Drainage\grd\1044\Rev 61.dgn

REVISIONS	
DATE	DESCRIPTION
06/02/19	NEW SHEET



CHRISTOPHER P. MESZLER, P.E.
LIC. No. 112052
1903 CENTRAL DRIVE, SUITE #405
BEDFORD, TX 76021
PHONE: 817.618.3640
TBPE REG. F-15243

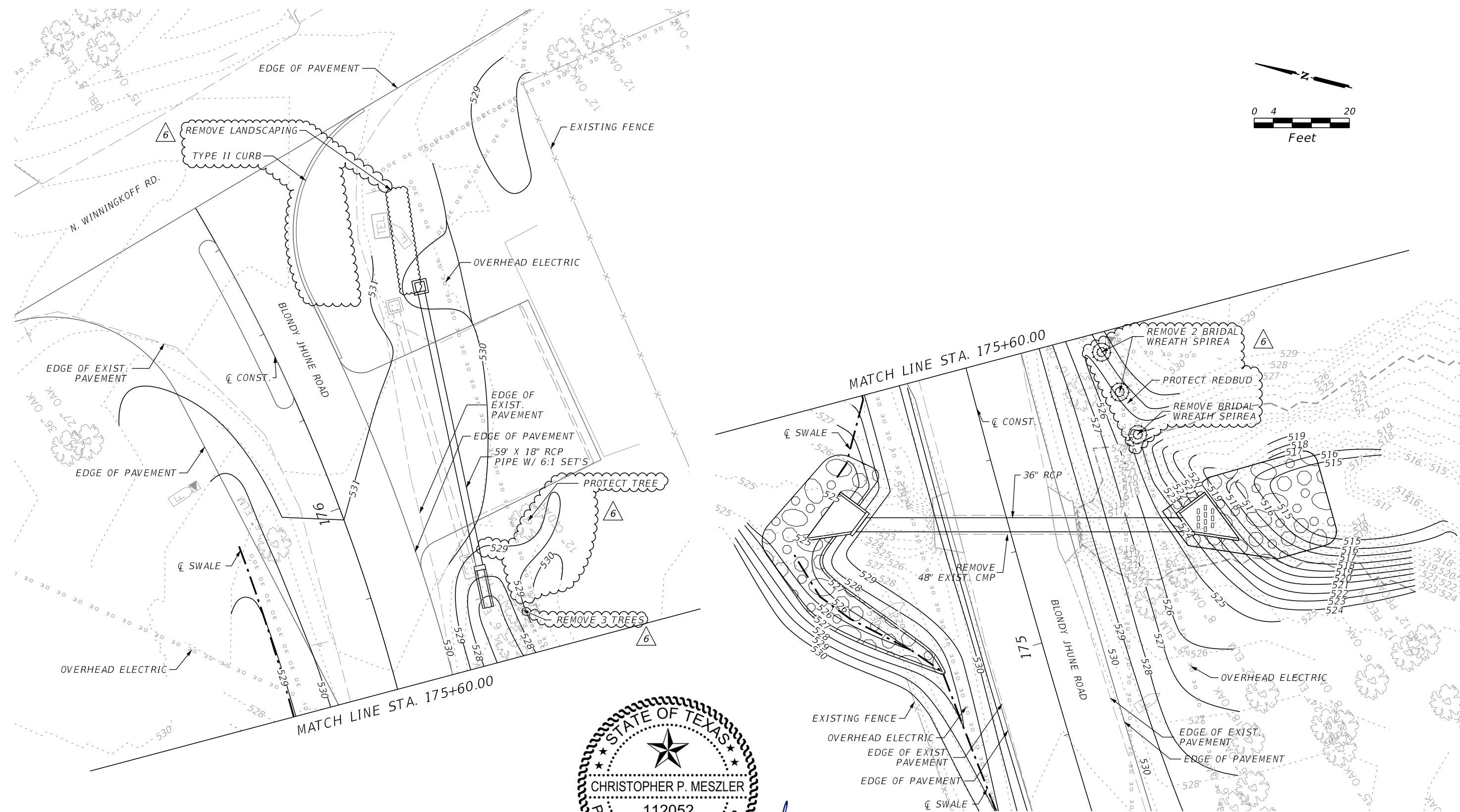
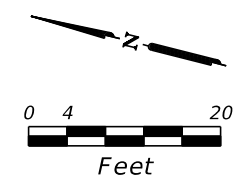


BLONDY JHUNE RD. RECONST.
CITY OF LUCAS
PUBLIC WORKS DEPARTMENT
665 COUNTRY CLUB ROAD
LUCAS, TX. 75002

GRADING PLAN

SHEET NO.
37A

CALL BEFORE YOU DIG
TEXAS ONE CALL PARTICIPANTS REQUEST
48 HOURS NOTICE BEFORE YOU DIG, DRILL,
OR BLAST - STOP CALL



CHRISTOPHER P. MESZLER, P.E.
 LIC. No. 112052
 1903 CENTRAL DRIVE, SUITE #405
 BEDFORD, TX 76021
 PHONE: 817.618.3640
 TBPE REG. F-15243

NOTE:
ALL TREES 6" DIAMETER AND GREATER SHALL REMAIN AND BE PROTECTED.

CULVERT #8

ihogress
 6/20/2019
 PLOT DATE: 8:22:14 AM
 LAST SAVED: T:\17-113 Blondy Jhune\1800457\4 - Design\Plan Set\5. Drainage\grd\id05.dgn

REVISIONS	
DATE	DESCRIPTION
06/02/19	6 MODIFIED/ADDED TEXT LABELS



CHRISTOPHER P. MESZLER, P.E.
 LIC. No. 112052
 1903 CENTRAL DRIVE, SUITE #405
 BEDFORD, TX 76021
 PHONE: 817.618.3640
 TBPE REG. F-15243

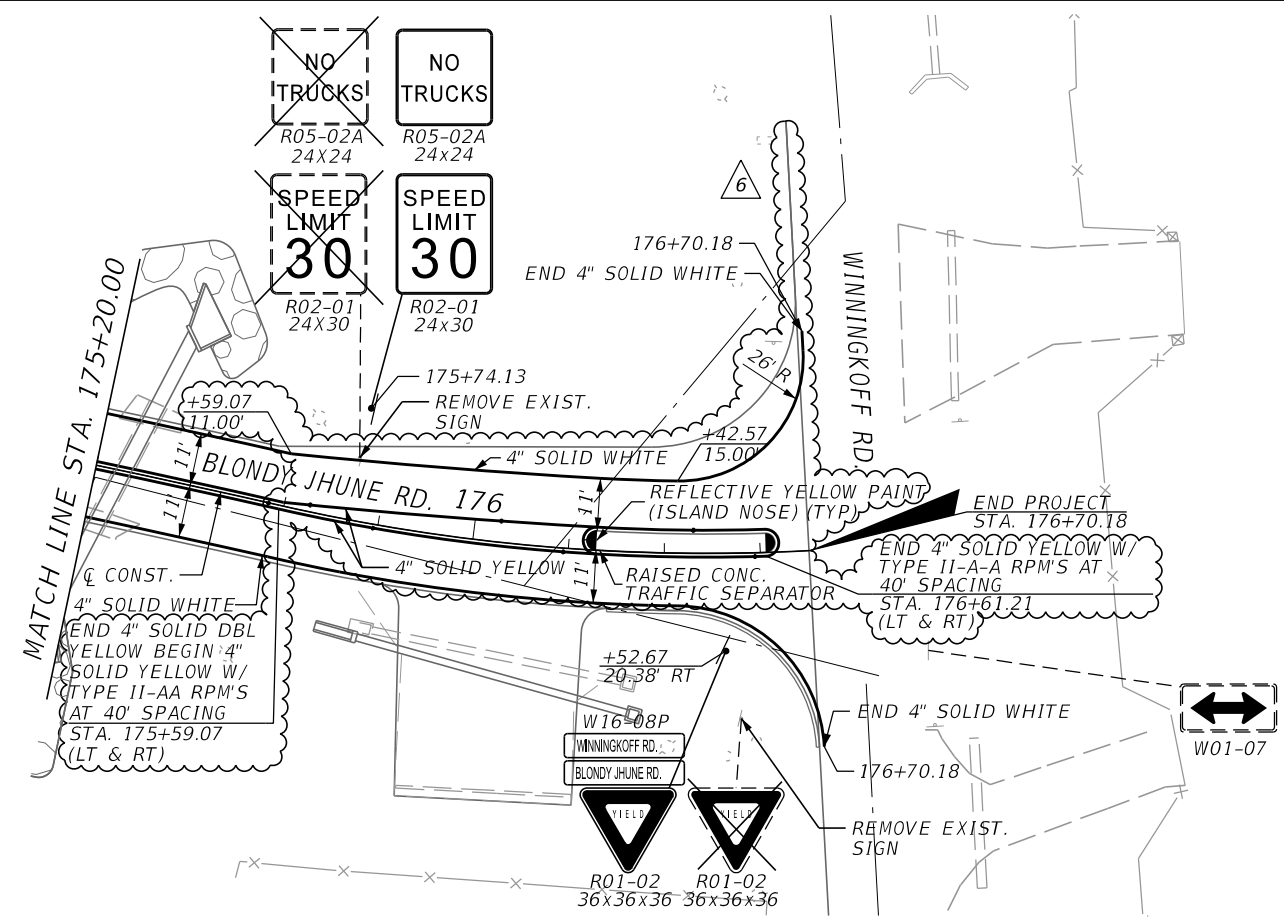
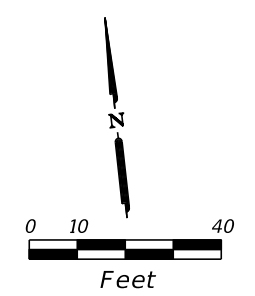


BLONDY JHUNE RD. RECONST.
 CITY OF LUCAS
 PUBLIC WORKS DEPARTMENT
 665 COUNTRY CLUB ROAD
 LUCAS, TX. 75002

GRADING PLAN

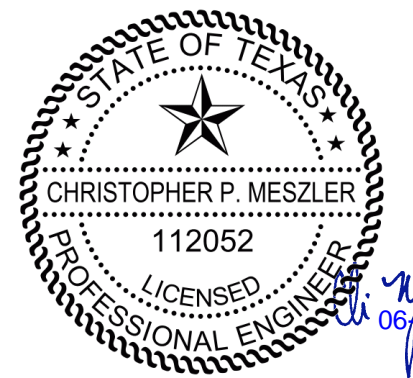
SHEET NO.
 38

CALL BEFORE YOU DIG
 TEXAS ONE CALL SYSTEM
 1-800-DIG-1-ESS
 48 HOURS NOTICE BEFORE YOU DIG, DRILL, OR BLAST - STOP-CALL



NOTE:

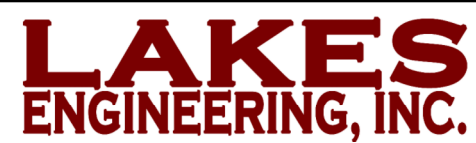
1. SEE TXDOT STANDARD RS(3)-13 (OPTION 1) FOR MILLED CENTERLINE RUMBLE STRIPS.
2. SEE TXDOT STANDARD RS(4)-13 (OPTION 1) FOR CONTINUOUS MILLED DEPRESSIONS.
3. PLACE BLUE RPM'S AT FIRE HYDRANT IN THE CENTER OF THE NEAREST LANE.



Handwritten signature and date: 06/20-2019

PLOTTED BY: jhoggess
 PLOT DATE: 6/20/2019
 LAST SAVED: 8:22:15 AM
 LOCATION: T:\17-113 Blondy Jhune\1800457\4 - Design\Plan Set\3. Roadway\plansp07.DGN

REVISIONS	
DATE	DESCRIPTION
06/02/19	6 MODIFIED PAVEMENT MARKINGS



CHRISTOPHER P. MESZLER, P.E.
 LIC. No. 112052
 1903 CENTRAL DRIVE, SUITE #405
 BEDFORD, TX 76021
 PHONE: 817.618.3640
 TBPE REG. F-15243



BLONDY JHUNE RD. RECONST.
 CITY OF LUCAS
 PUBLIC WORKS DEPARTMENT
 665 COUNTRY CLUB ROAD
 LUCAS, TX. 75002

SIGNING & PAVEMENT MARKINGS

SHEET NO.
 66

CALL BEFORE YOU DIG
 TEXAS ONE CALL PARTICIPANTS REQUEST
 48 HOURS NOTICE BEFORE YOU DIG, DRILL,
 OR BLAST - STOP CALL
 TEXAS ONE CALL SYSTEM
 1-800-DIG-1-ESS