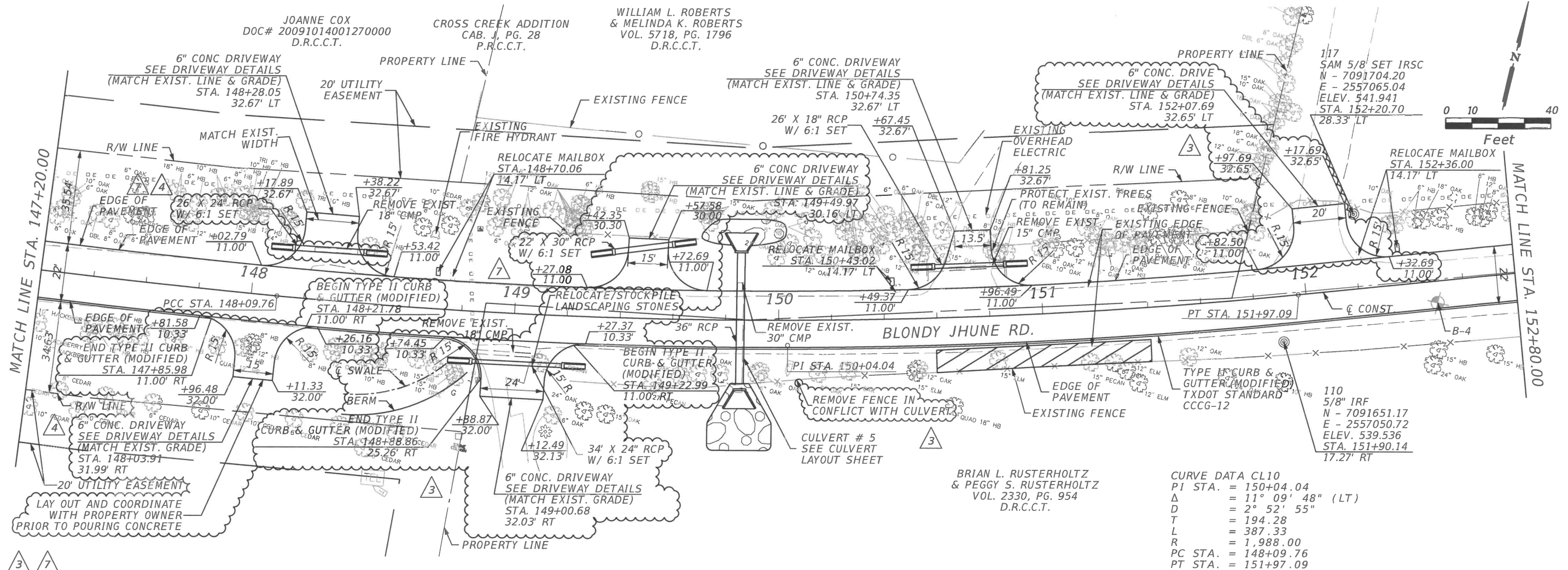


JOANNE COX
DOC# 20091014001270000
D.R.C.C.T.

CROSS CREEK ADDITION
CAB. J, PG. 28
P.R.C.C.T.

WILLIAM L. ROBERTS
& MELINDA K. ROBERTS
VOL. 5718, PG. 1796
D.R.C.C.T.

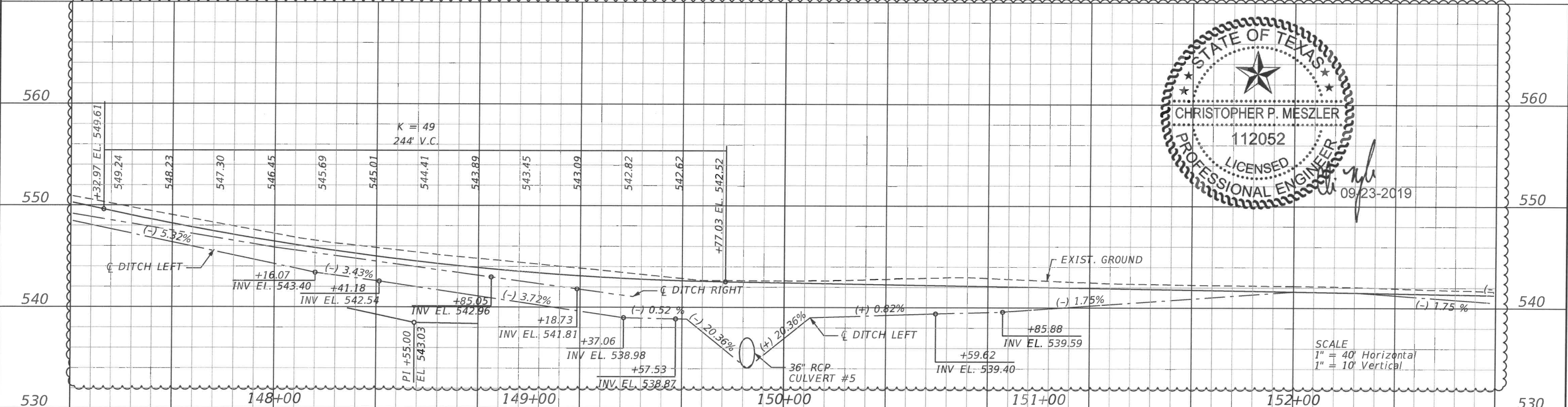


CURVE DATA CL10
PI STA. = 150+04.04
Δ = 11° 09' 48" (LT)
D = 2° 52' 55"
T = 194.28
L = 387.33
R = 1,988.00
PC STA. = 148+09.76
PT STA. = 151+97.09

BRIAN L. RUSTERHOLTZ
& PEGGY S. RUSTERHOLTZ
VOL. 2330, PG. 954
D.R.C.C.T.

3 7

PLOTTED BY: hremeteria 9/20/2019 4:08:44 PM LAST SAVED: 4:08:44 PM LOCATION: T:\17-113 Blondy Jhune\1800457\4 - Design\Plan Set\3. Roadway\pavplnpp08.dgn



SCALE
1" = 40' Horizontal
1" = 10' Vertical

DATE	REVISIONS DESCRIPTION
04/02/19	△ MODIFIED DRIVEWAY/ADDED DITCH PROFILES
04/18/19	△ ADDED DRIVEWAY & MODIFIED RCP
08/15/19	△ ADDED DRIVEWAY & RCP/ △ UPDATED DITCH PROFILE

LAKES ENGINEERING, INC.

CHRISTOPHER P. MESZLER, P.E.
LIC. No. 112052
1903 CENTRAL DRIVE, SUITE #405
BEDFORD, TX 76021
PHONE: 817.618.3640
TBPE REG. F-15243



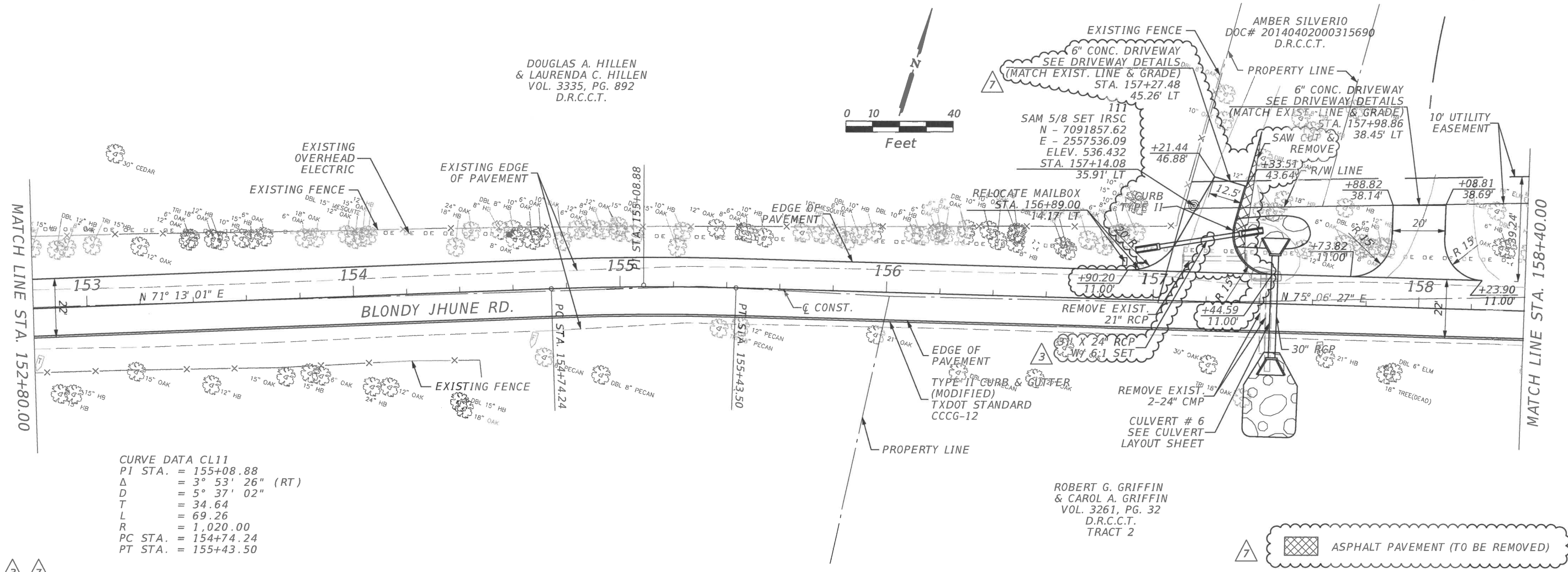
BLONDY JHUNE RD. RECONST.
CITY OF LUCAS
PUBLIC WORKS DEPARTMENT
665 COUNTRY CLUB ROAD
LUCAS, TX. 75002

PLAN & PROFILE

SHEET NO.
16

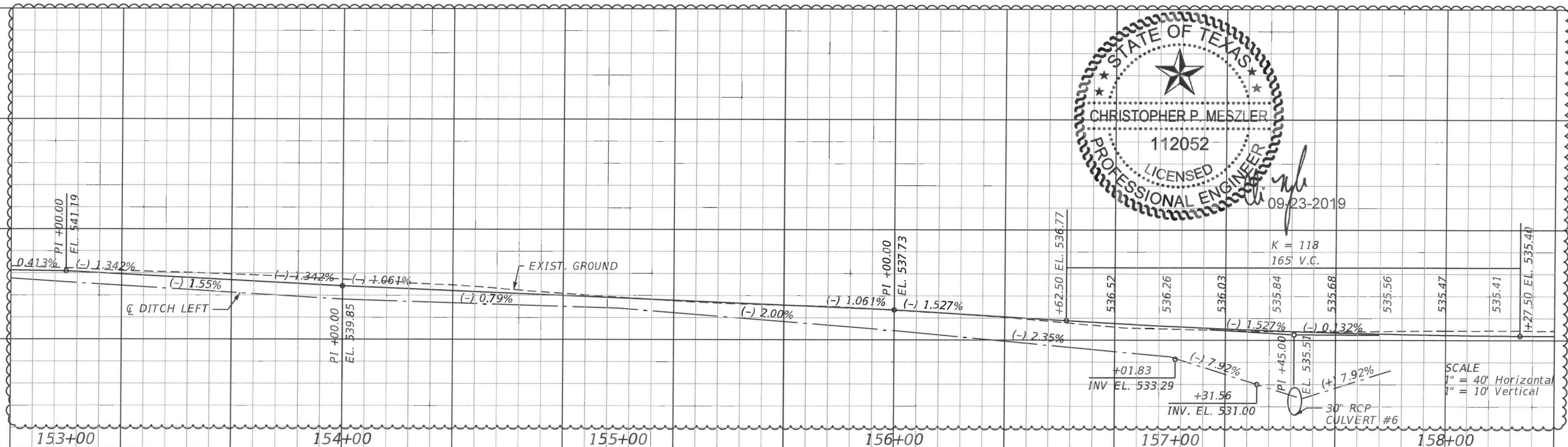
CALL BEFORE YOU DIG
TEXAS ONE CALL SYSTEM
1-800-DIG-TESS
48 HOURS OR BLAST - STOP CALL

DOUGLAS A. HILLEN
& LAURENDA C. HILLEN
VOL. 3335, PG. 892
D.R.C.C.T.



CURVE DATA CL11
PI STA. = 155+08.88
 Δ = 3° 53' 26" (RT)
D = 5° 37' 02"
T = 34.64
L = 69.26
R = 1,020.00
PC STA. = 154+74.24
PT STA. = 155+43.50

ROBERT G. GRIFFIN
& CAROL A. GRIFFIN
VOL. 3261, PG. 32
D.R.C.C.T.
TRACT 2



SCALE
1" = 40' Horizontal
1" = 10' Vertical

hrementeria
PLOT DATE: 9/20/2019
LAST SAVED: 4:23:01 PM
LOCATION: T:\17-113 Blondy Jhune\1800457\4 - Design\Plan Set\3. Roadway\pavplanp09.dgn

DATE	REVISIONS DESCRIPTION
04/02/19	3 MODIFIED TEXT LABEL & ADDED DITCH PROFILES
08/15/19	7 MODIFIED DRIVEWAY/RIPPAP & UPDATE DITCH PROFILES

LAKES ENGINEERING, INC.

CHRISTOPHER P. MESZLER, P.E.
LIC. No. 112052
1903 CENTRAL DRIVE, SUITE #405
BEDFORD, TX 76021
PHONE: 817.618.3640
TBPE REG. F-15243



BLONDY JHUNE RD. RECONST.
CITY OF LUCAS
PUBLIC WORKS DEPARTMENT
665 COUNTRY CLUB ROAD
LUCAS, TX. 75002

PLAN & PROFILE

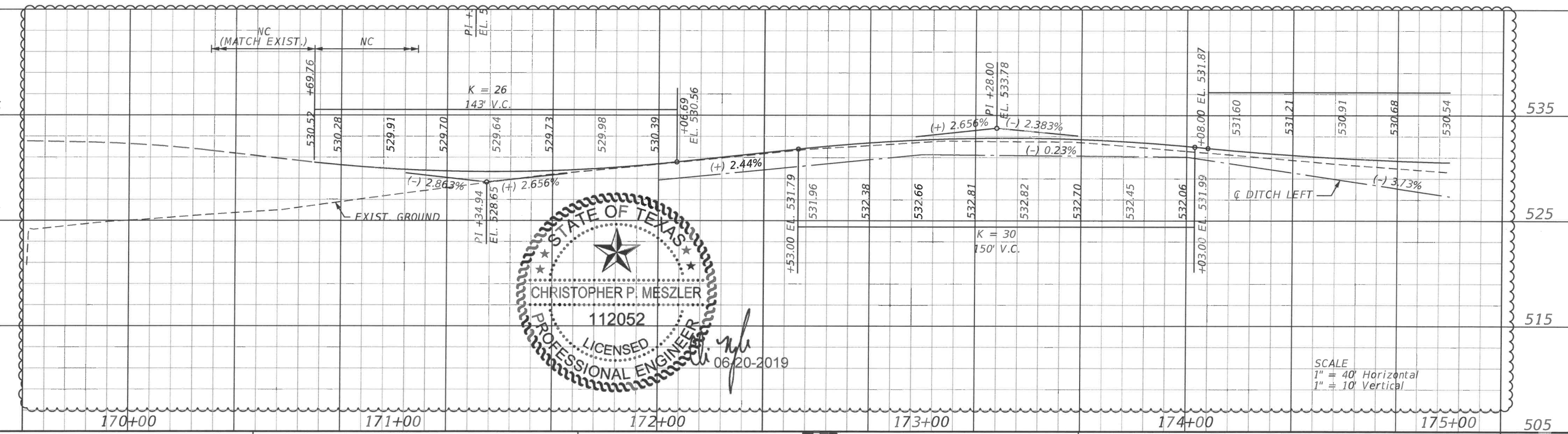
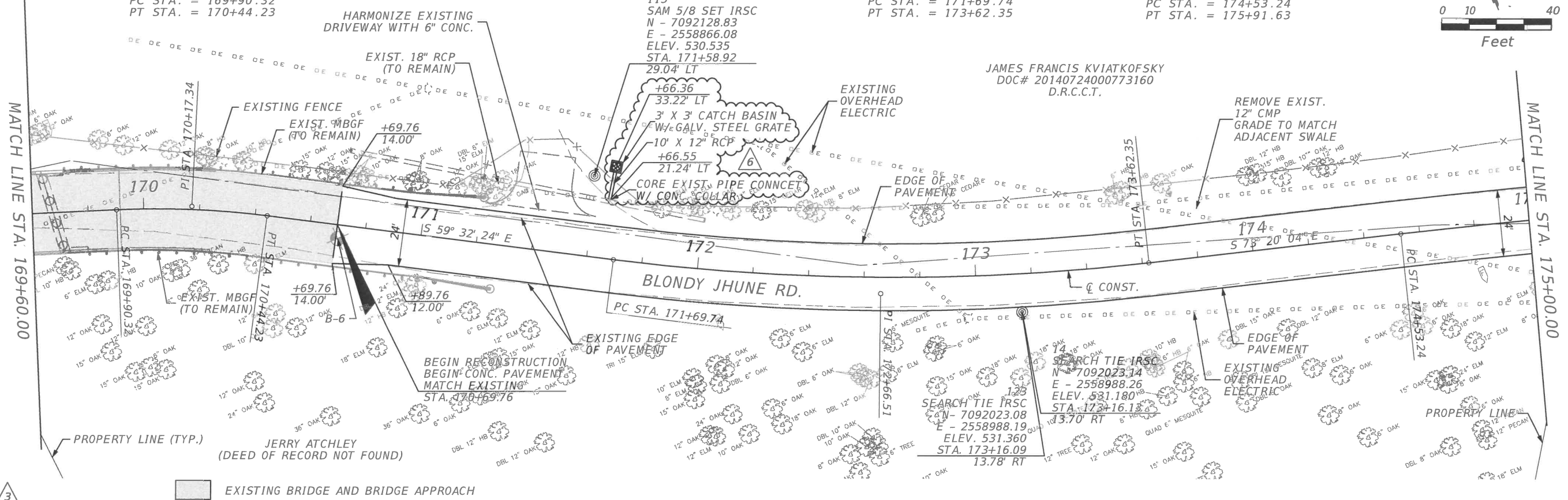
SHEET NO.
17

CALL BEFORE YOU DIG
IF YOU ARE AN UNLICENSED PERSON REQUEST
48 HOURS NOTICE BEFORE DIG, DRILL,
OR BLOW UP. STOP CALL
TEXAS ONE CALL SYSTEM
1-800-DIG-TESS

CURVE DATA CL15
 PI STA. = 170+17.34
 Δ = 9° 50' 19" (RT)
 D = 18° 14' 59"
 T = 27.02
 L = 53.91
 R = 313.95
 PC STA. = 169+90.32
 PT STA. = 170+44.23

CURVE DATA CL16
 PI STA. = 172+66.51
 Δ = 13° 47' 40" (LT)
 D = 7° 09' 43"
 T = 96.77
 L = 192.61
 R = 800.00
 PC STA. = 171+69.74
 PT STA. = 173+62.35

CURVE DATA CL17
 PI STA. = 175+22.45
 Δ = 3° 10' 18" (RT)
 D = 2° 17' 31"
 T = 69.21
 L = 138.38
 R = 2,500.00
 PC STA. = 174+53.24
 PT STA. = 175+91.63



PLOTTED BY: ihogness
 PLOT DATE: 6/20/2019
 LAST SAVED: 8:22:06 AM
 LOCATION: T:\17-113 Blondy Jhune\1800457\4 - Design\Plan Set\3. Roadway\pavplanp12.dgn

DATE	REVISIONS
04/02/19	3 MODIFIED TEXT LABEL & ADDED DITCH PROFILES
06/02/19	6 ADDED RCP & CATCH BASIN

LAKES ENGINEERING, INC.

CHRISTOPHER P. MESZLER, P.E.
 LIC. No. 112052
 1903 CENTRAL DRIVE, SUITE #405
 BEDFORD, TX 76021
 PHONE: 817.618.3640
 TBPE REG. F-15243

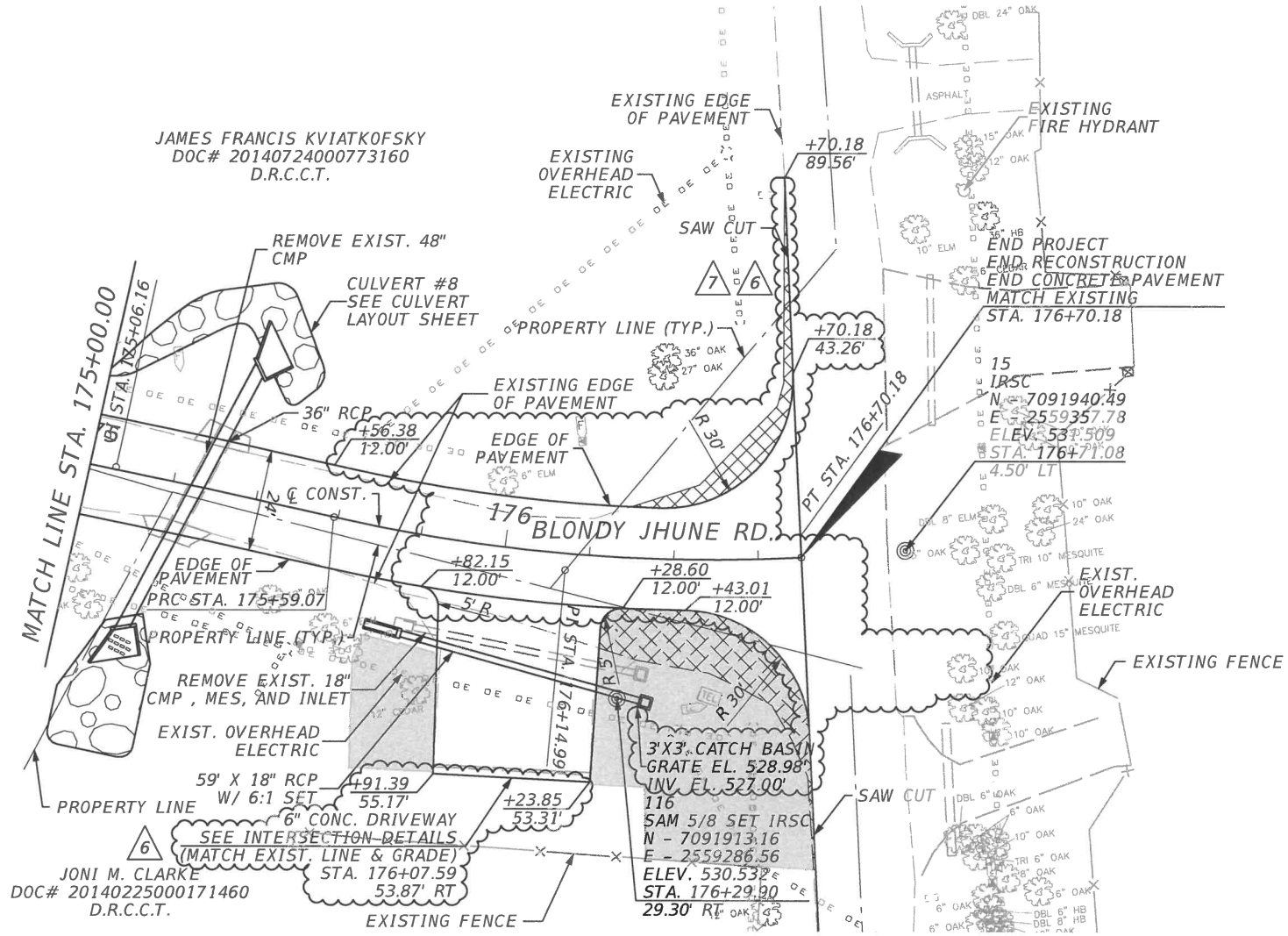
BLONDY JHUNE RD. RECONST.
 CITY OF LUCAS
 PUBLIC WORKS DEPARTMENT
 665 COUNTRY CLUB ROAD
 LUCAS, TX. 75002

PLAN & PROFILE

SHEET NO.
 20

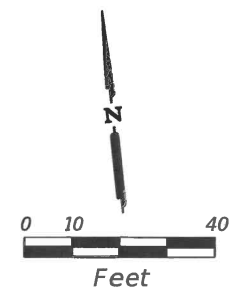
CALL BEFORE YOU DIG
 TEXAS ONE CALL SYSTEM
 1-800-DIG-TESS
 REQUEST REFERENCE TO: DIG, DRILL,
 48 HOURS NOTICE BEFORE YOU DIG - STOP CALL

JAMES FRANCIS KVIATKOFSKY
DOC# 20140724000773160
D.R.C.C.T.



CURVE DATA CL17
PI STA. = 175+06.16
 Δ = 2° 25' 32" (RT)
D = 2° 17' 31"
T = 52.92
L = 105.83
R = 2,500.00
PC STA. = 174+53.24
PT STA. = 175+59.07

CURVE DATA CL18
PI STA. = 176+14.99
 Δ = 15° 54' 41" (LT)
D = 14° 19' 14"
T = 55.91
L = 111.11
R = 400.09
PC STA. = 175+59.07
PT STA. = 176+70.18

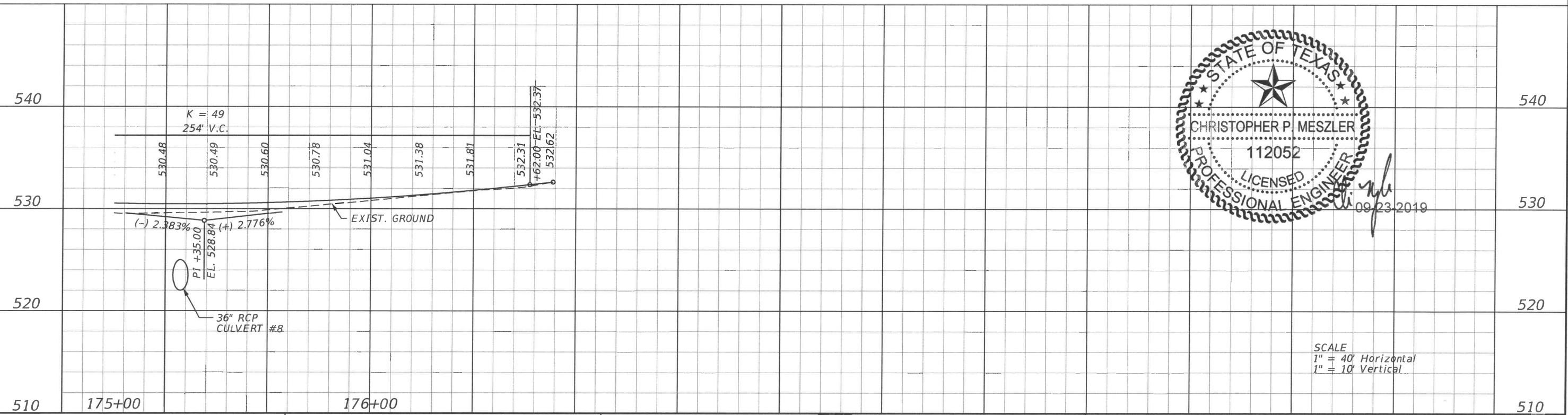


LEGEND:
 GRADE TO DRAIN, SOD ALL DISTURBED AREAS (SEE GRADING PLANS)
 ASPHALT PAVEMENT (TO BE REMOVED)

JONI M. CLARKE
DOC# 20140225000171460
D.R.C.C.T.

3'X3' CATCH BASIN
GRATE EL. 528.98'
INV. EL. 527.00'
116
SAM 5/8 SET IRSC
N - 7091913.16
E - 2559286.56
ELEV. 530.532'
STA. 176+29.90
29.30' RT

PLOTTED BY: hremeteria
 PLOT DATE: 9/20/2019
 LAST SAVED: 4:08:46 PM
 LOCATION: T:\17-113 Blondy Jhune\1800457\4 - Design\Plan Set\3. Roadway\pavplanp13.dgn



SCALE
1" = 40' Horizontal
1" = 10' Vertical

REVISIONS	
DATE	DESCRIPTION
06/02/19	6 MODIFIED ROADWAY/DRIVEWAY
08/15/19	7 MODIFIED ROADWAY/DRIVEWAY

LAKES ENGINEERING, INC.

CHRISTOPHER P. MESZLER, P.E.
LIC. No. 112052
1903 CENTRAL DRIVE, SUITE #405
BEDFORD, TX 76021
PHONE: 817.618.3640
TBPE REG. F-15243



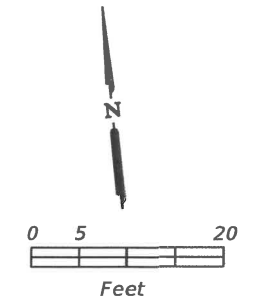
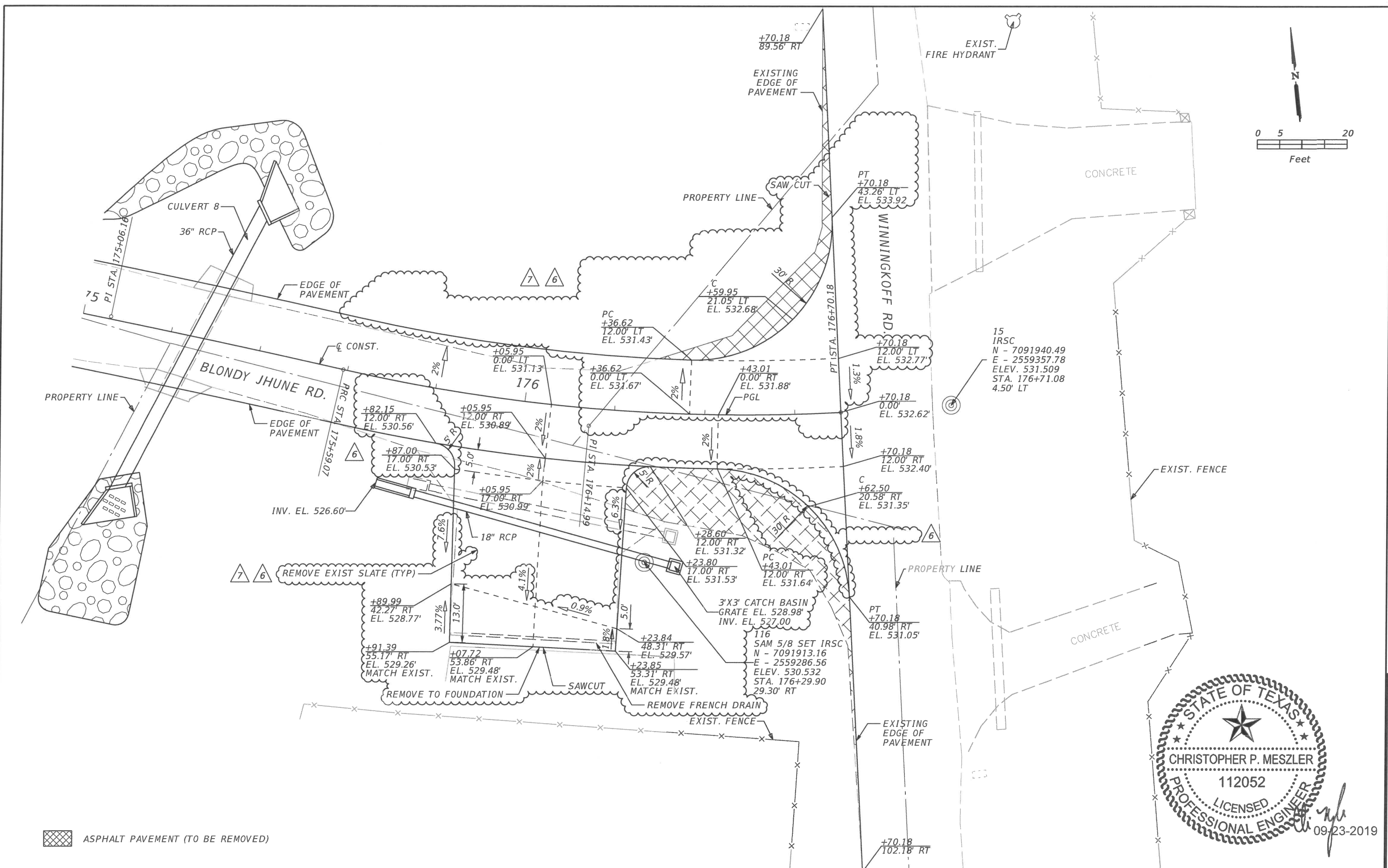
BLONDY JHUNE RD. RECONST.
CITY OF LUCAS
PUBLIC WORKS DEPARTMENT
665 COUNTRY CLUB ROAD
LUCAS, TX. 75002

PLAN & PROFILE

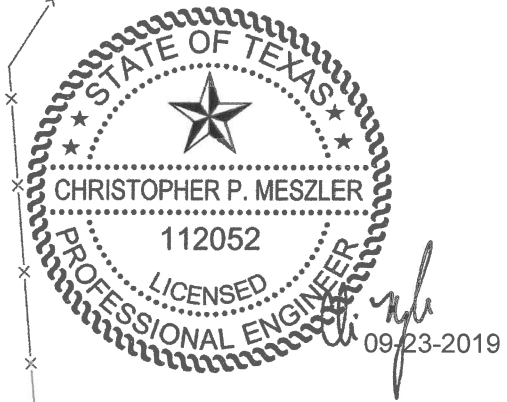
SHEET NO.
21

CALL BEFORE YOU DIG
 TEXAS ONE CALL PARTICIPANTS REQUEST
 48 HOURS BEFORE DIG, DRILL,
 OR BLAST - STOP CALL
 TEXAS ONE CALL SYSTEM
 1-800-DIG-TESS

PLOTTED BY: hrementeria
 9/20/2019
 LAST DATE: 4:08:47 PM
 LOCATION: T:\17-113 Blondy Jhune\1800457\4 - Design\Plan Set\3. Roadway\intdrd03.DGN



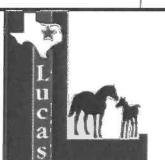
ASPHALT PAVEMENT (TO BE REMOVED)



REVISIONS	
DATE	DESCRIPTION
06/02/19	6 MODIFIED ROADWAY/DRIVEWAY & ADDED TEXT LABELS
08/15/19	7 MODIFIED ROADWAY/DRIVEWAY

LAKES ENGINEERING, INC.

CHRISTOPHER P. MESZLER, P.E.
 LIC. No. 112052
 1903 CENTRAL DRIVE, SUITE #102
 BEDFORD, TX 76021
 PHONE: 817.618.3640
 TBPE REG. F-15243



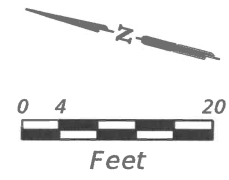
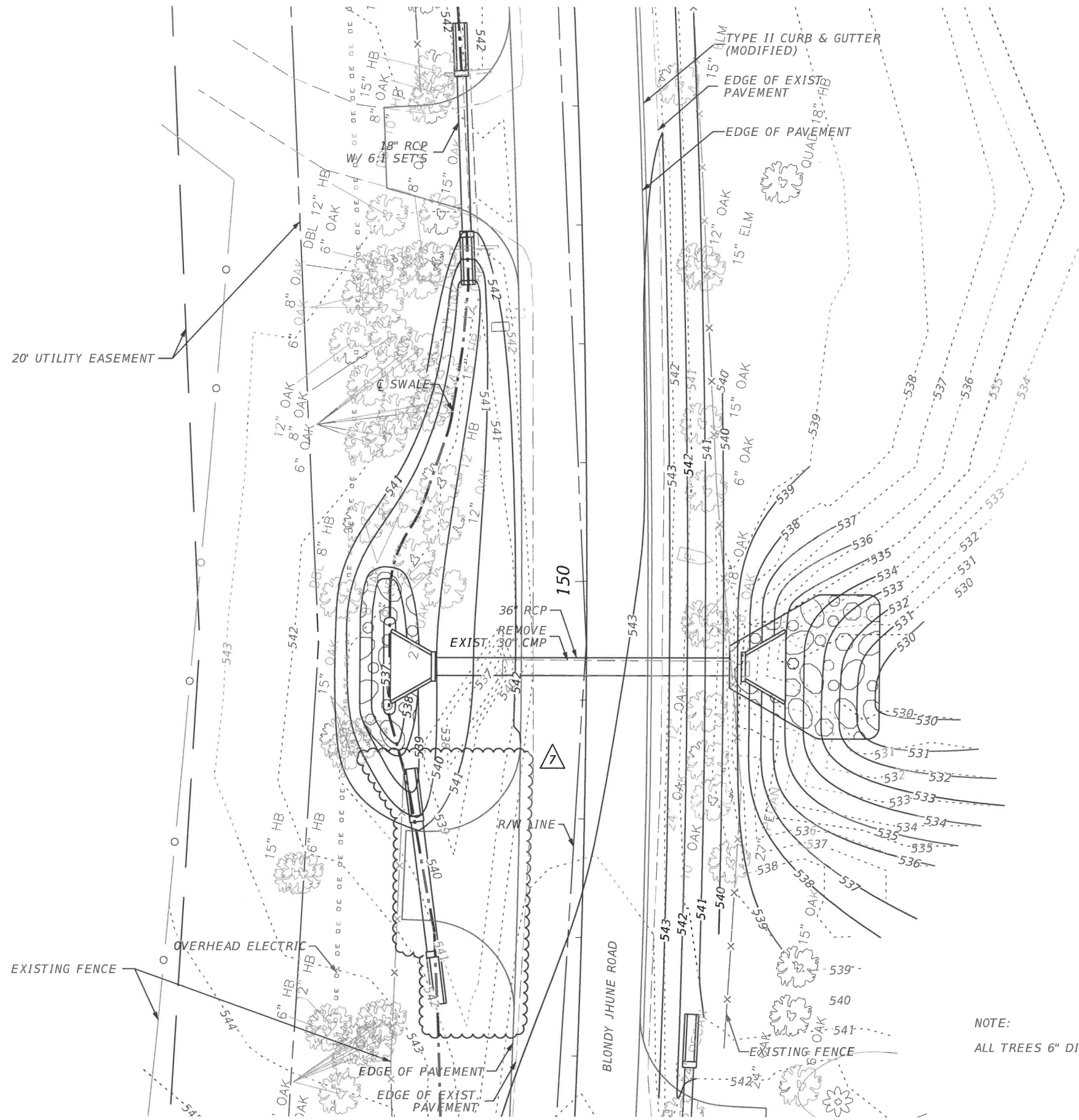
BLONDY JHUNE RD. RECONST.
 CITY OF LUCAS
 PUBLIC WORKS DEPARTMENT
 665 COUNTRY CLUB ROAD
 LUCAS, TX. 75002

INTERSECTION DETAILS

SHEET NO.
 23

CALL BEFORE YOU DIG
 TEXAS ONE CALL PARTICIPANTS REQUEST
 48 HOURS AHEAD BEFORE YOU DIG, DRILL,
 OR BURY - STOP CALL
 TEXAS ONE CALL SYSTEM
 1-800-DIG-TXSS

PLOTTED BY: hrementeria
 9/20/2019
 4:08:49 PM
 LAST SAVED: T:\17-113 Blondy Jhune\1800457\4 - Design\Plan Set\5. Drainage\grdtd03.dgn
 LOCATION:



NOTE:
 ALL TREES 6" DIAMETER AND GREATER SHALL REMAIN AND BE PROTECTED.

CULVERT #5

DATE	REVISIONS DESCRIPTION
08/15/19	7 MODIFIED GRADING PLAN ADDED DRIVEWAY & RCP/SET

LAKES ENGINEERING, INC.

CHRISTOPHER P. MESZLER, P.E.
 LIC. No. 112052
 1903 CENTRAL DRIVE, SUITE #405
 BEDFORD, TX 76021
 PHONE: 817.618.3640
 TBPE REG. F-15243



BLONDY JHUNE RD. RECONST.
 CITY OF LUCAS
 PUBLIC WORKS DEPARTMENT
 665 COUNTRY CLUB ROAD
 LUCAS, TX. 75002

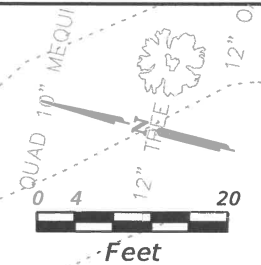
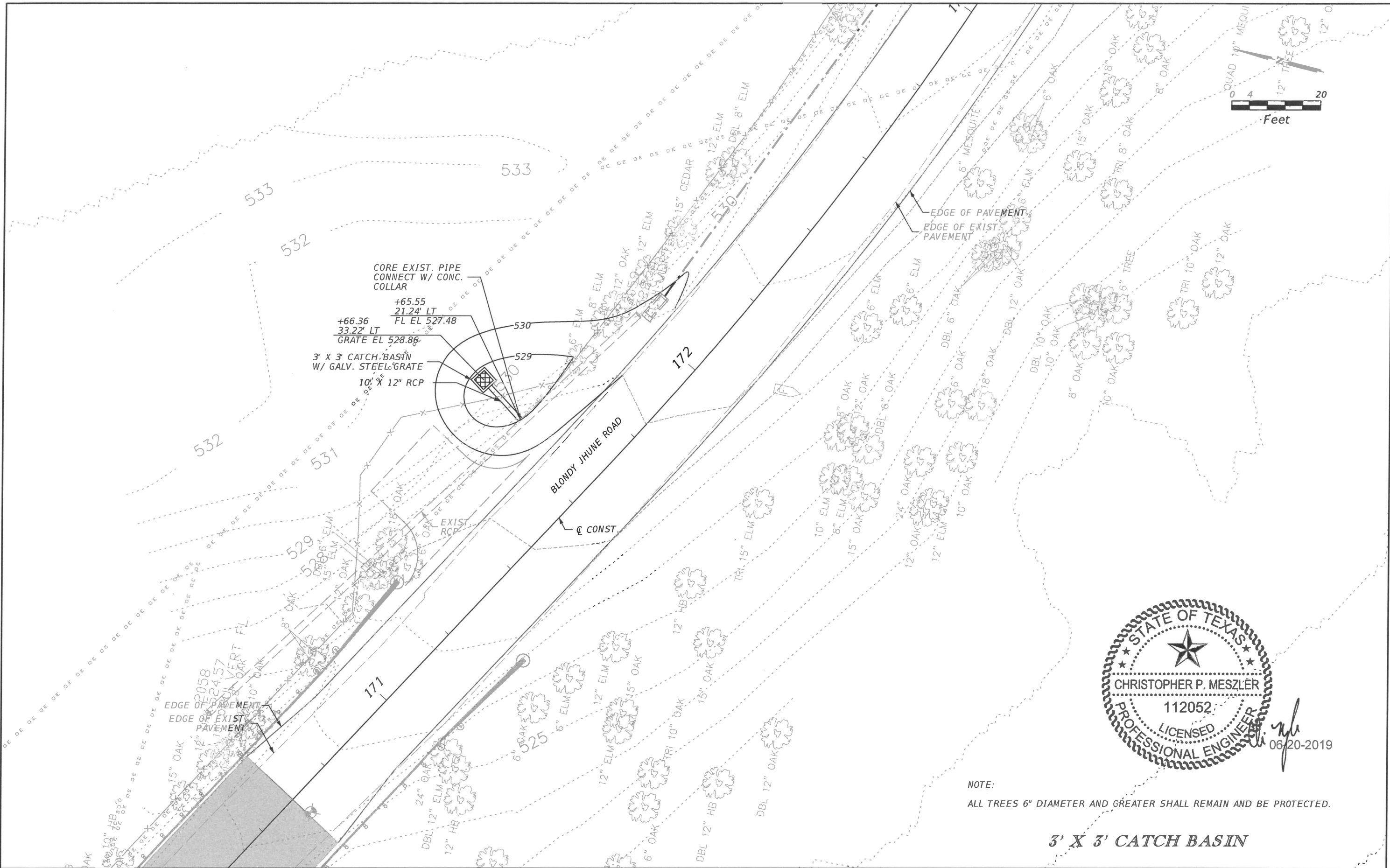
GRADING PLAN

SHEET NO.	36
-----------	----

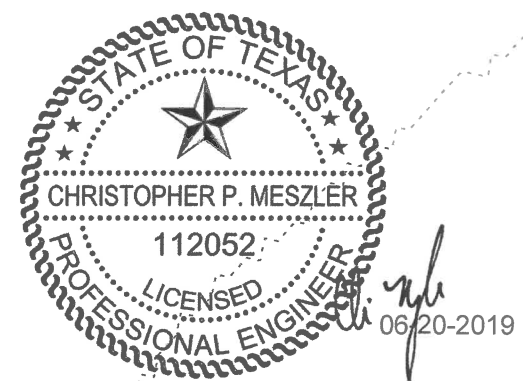
CALL BEFORE YOU DIG
 48 HOURS NOTICE BEFORE ANY REQUEST FOR DIGGING, DRILLING, OR BLASTING - STOP CALL



ihogness
 6/20/2019
 PLOT DATE:
 8:22:12 AM
 LAST SAVED:
 T:\17-113 Blondy Jhune\1800457\4 - Design\Plan Set\5. Drainage\grdtd04A(Rev 6).dgn
 LOCATION:



CORE EXIST. PIPE
 CONNECT W/ CONC.
 COLLAR
 +65.55
 21.24' LT
 FL EL 527.48
 +66.36
 33.22' LT
 GRATE EL 528.86
 3' X 3' CATCH BASIN
 W/ GALV. STEEL GRATE
 10' X 12" RCP



NOTE:
 ALL TREES 6" DIAMETER AND GREATER SHALL REMAIN AND BE PROTECTED.

3' X 3' CATCH BASIN

DATE	REVISIONS DESCRIPTION
06/02/19	6 NEW SHEET

LAKES
ENGINEERING, INC.

CHRISTOPHER P. MESZLER, P.E.
 LIC. No. 112052
 1903 CENTRAL DRIVE, SUITE #405
 BEDFORD, TX 76021
 PHONE: 817.618.3640
 TBPE REG. F-15243



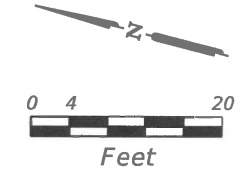
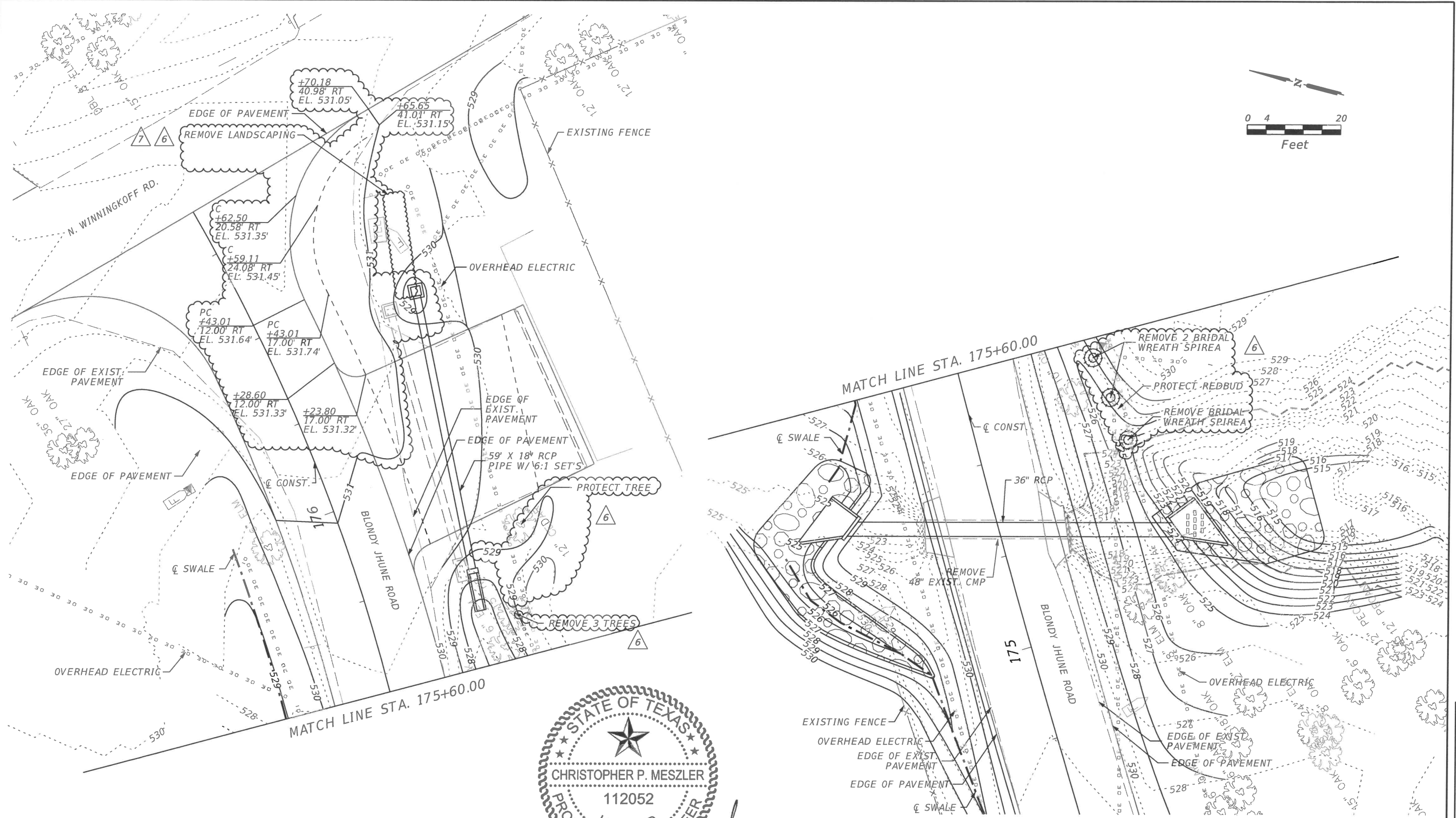
BLONDY JHUNE RD. RECONST.
 CITY OF LUCAS
 PUBLIC WORKS DEPARTMENT
 665 COUNTRY CLUB ROAD
 LUCAS, TX. 75002

GRADING PLAN

SHEET
 NO.
 37A

CALL BEFORE YOU DIG
 48 HOURS NOTICE BEFORE ANY DIG, DRILL,
 OR BLOW-OUT OPERATION
 TEXAS ONE CALL SYSTEM
 1-800-DIG-TESS

PLOTTED BY: hremont@lakes.com
 PLOT DATE: 9/20/2019
 LAST SAVED: 4:08:51 PM
 LOCATION: T:\17-113 Blondy Jhune\1800457_4 - Design\Plan Set\5. Drainage\grdt\05.dgn



STATE OF TEXAS
 ★
 CHRISTOPHER P. MESZLER
 112052
 LICENSED
 PROFESSIONAL ENGINEER

09/23/2019

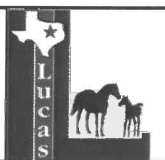
NOTE:
 ALL TREES 6" DIAMETER AND GREATER SHALL REMAIN AND BE PROTECTED.

CULVERT #8

REVISIONS	
DATE	DESCRIPTION
06/02/19	6 MODIFIED/ADDED TEXT LABELS
08/15/19	7 REMOVE TYPE II CURB

LAKES
ENGINEERING, INC.

CHRISTOPHER P. MESZLER, P.E.
 LIC. No. 112052
 1903 CENTRAL DRIVE, SUITE #405
 BEDFORD, TX 76021
 PHONE: 817.618.3640
 TBPE REG. F-15243

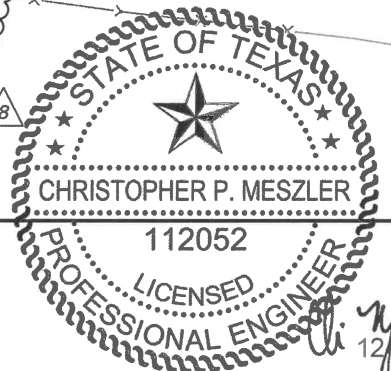
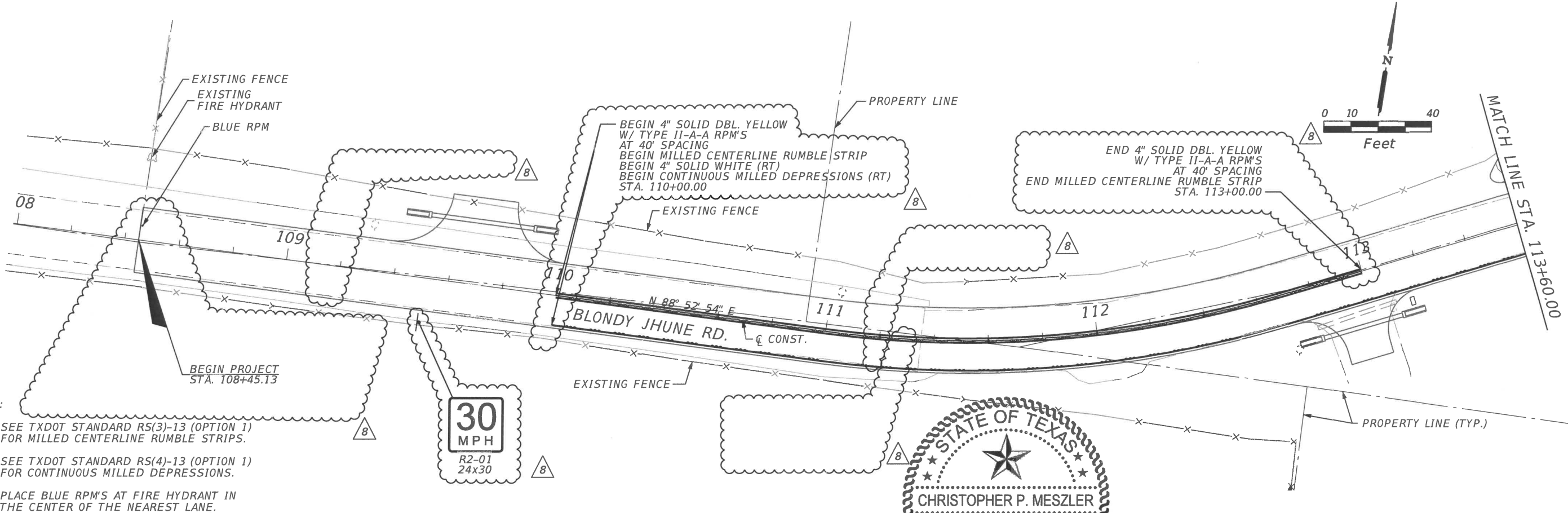


BLONDY JHUNE RD. RECONST.
 CITY OF LUCAS
 PUBLIC WORKS DEPARTMENT
 665 COUNTRY CLUB ROAD
 LUCAS, TX. 75002

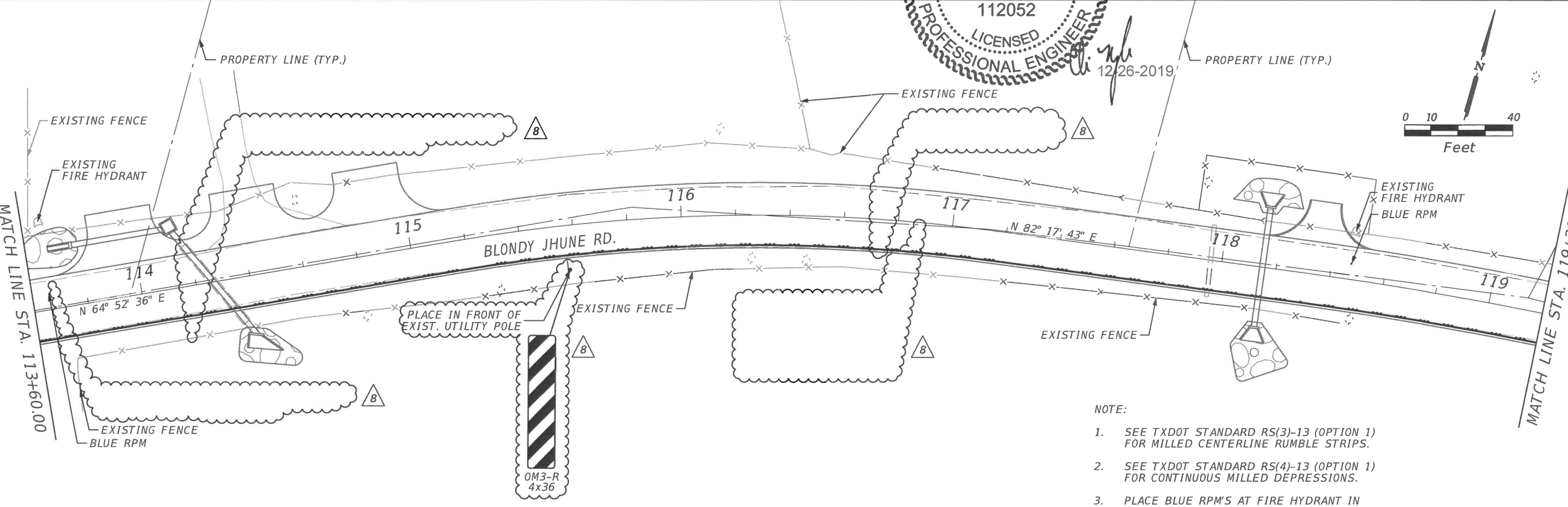
GRADING PLAN

SHEET
 NO.
 38

CALL BEFORE YOU DIG
 TEXAS ONE CALL PARTICIPANTS REQUEST
 48 HOURS BEFORE YOU DIG, DRILL,
 OR BLAST - STOP-CALL



- NOTE:
1. SEE TXDOT STANDARD RS(3)-13 (OPTION 1) FOR MILLED CENTERLINE RUMBLE STRIPS.
 2. SEE TXDOT STANDARD RS(4)-13 (OPTION 1) FOR CONTINUOUS MILLED DEPRESSIONS.
 3. PLACE BLUE RPM'S AT FIRE HYDRANT IN THE CENTER OF THE NEAREST LANE.



- NOTE:
1. SEE TXDOT STANDARD RS(3)-13 (OPTION 1) FOR MILLED CENTERLINE RUMBLE STRIPS.
 2. SEE TXDOT STANDARD RS(4)-13 (OPTION 1) FOR CONTINUOUS MILLED DEPRESSIONS.
 3. PLACE BLUE RPM'S AT FIRE HYDRANT IN THE CENTER OF THE NEAREST LANE.

PLOTTED BY: CMeszler
 PLOT DATE: 12/26/2019
 LAST SAVED: 10:37:37 AM
 LOCATION: T:\17-113 Blondy Jhune\1800457\4 - Design\Plan Set\3. Roadway\plansp01.DGN

DATE	REVISIONS DESCRIPTION
10/04/19	8 MODIFIED SIGNAGE AND MILLING

LAKES ENGINEERING, INC.

CHRISTOPHER P. MESZLER, P.E.
 LIC. No. 112052
 1903 CENTRAL DRIVE, SUITE #102
 BEDFORD, TX 76021
 PHONE: 817.618.3640
 TBPE REG. F-15243

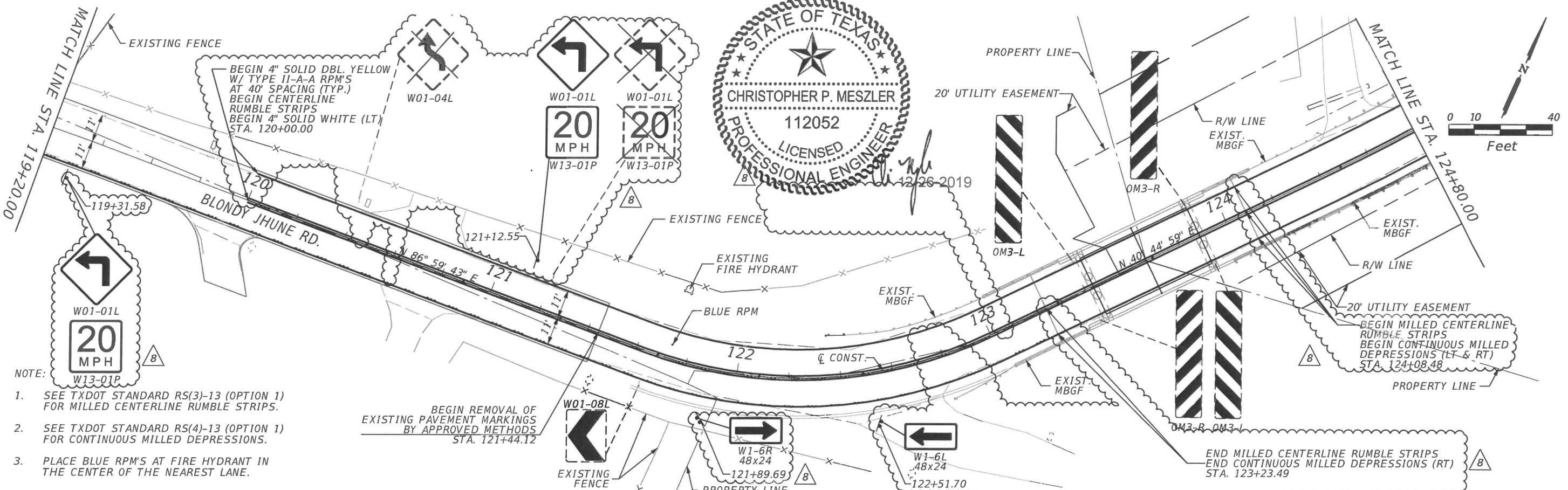
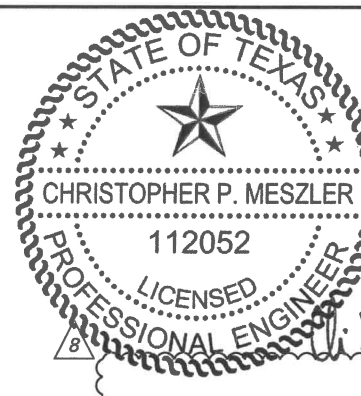


BLONDY JHUNE RD. RECONST.
 CITY OF LUCAS
 PUBLIC WORKS DEPARTMENT
 665 COUNTRY CLUB ROAD
 LUCAS, TX. 75002

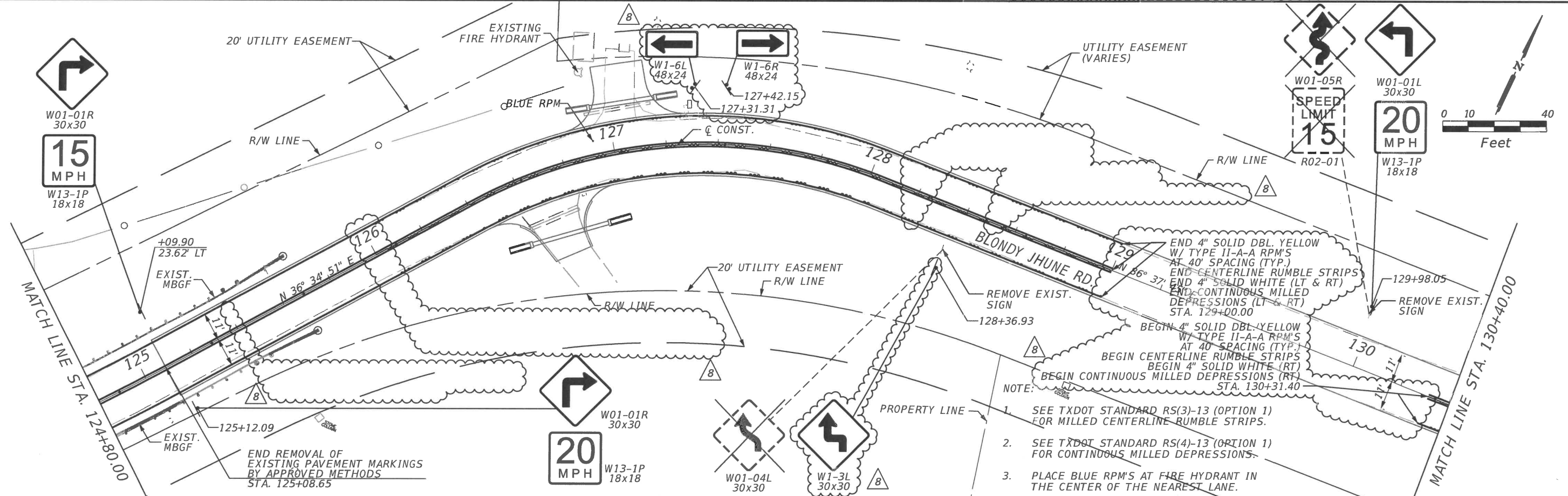
SIGNING & PAVEMENT MARKINGS

SHEET NO.
60

CALL BEFORE YOU DIG
 TEXAS ONE CALL SYSTEM
 1-800-DIG-TESS
 FILE OR PRINT BEFORE YOU DIG, DRILL, OR BLAST - STOP CALL



- NOTE:
- SEE TXDOT STANDARD RS(3)-13 (OPTION 1) FOR MILLED CENTERLINE RUMBLE STRIPS.
 - SEE TXDOT STANDARD RS(4)-13 (OPTION 1) FOR CONTINUOUS MILLED DEPRESSIONS.
 - PLACE BLUE RPM'S AT FIRE HYDRANT IN THE CENTER OF THE NEAREST LANE.



- NOTE:
- SEE TXDOT STANDARD RS(3)-13 (OPTION 1) FOR MILLED CENTERLINE RUMBLE STRIPS.
 - SEE TXDOT STANDARD RS(4)-13 (OPTION 1) FOR CONTINUOUS MILLED DEPRESSIONS.
 - PLACE BLUE RPM'S AT FIRE HYDRANT IN THE CENTER OF THE NEAREST LANE.

PLOTTED BY: CMeszler
 PLOT DATE: 12/26/2019
 LAST SAVED: 10:37:38 AM
 LOCATION: T:\17-113 Blondy Jhune\1800457\4 - Design\Plan Set\3. Roadway\plansp02.DGN

DATE	REVISIONS DESCRIPTION
10/04/19	8 MODIFIED SIGNAGE AND MILLING

LAKES ENGINEERING, INC.

CHRISTOPHER P. MESZLER, P.E.
 LIC. No. 112052
 1903 CENTRAL DRIVE, SUITE #102
 BEDFORD, TX 76021
 PHONE: 817.618.3640
 TBPE REG. F-15243

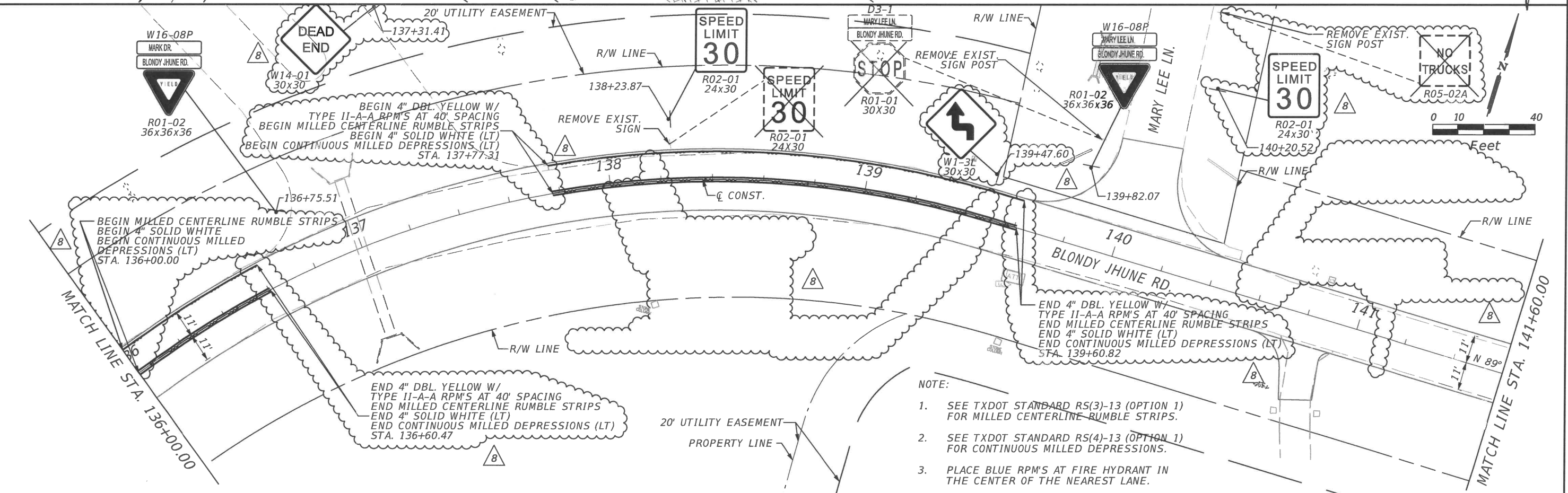
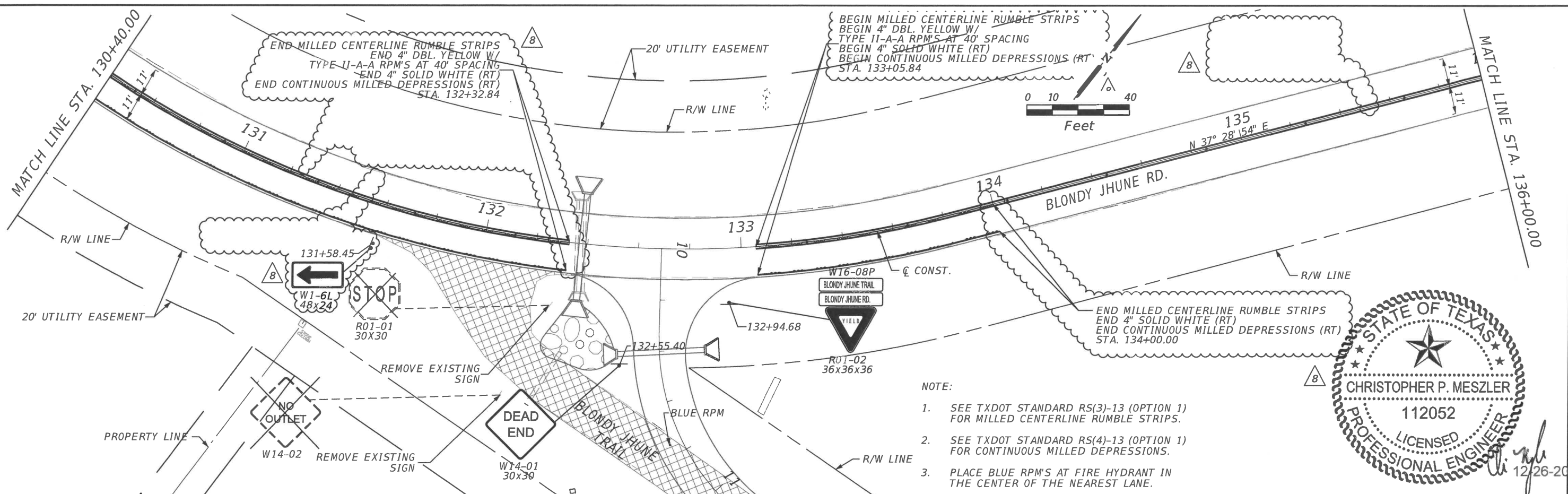
LUCAS

BLONDY JHUNE RD. RECONST.
 CITY OF LUCAS
 PUBLIC WORKS DEPARTMENT
 665 COUNTRY CLUB ROAD
 LUCAS, TX. 75002

SIGNING & PAVEMENT MARKINGS

SHEET NO.
61

CALL BEFORE YOU DIG
 TEXAS ONE CALL SYSTEM
 1-800-DIG-TESS
 48 HOURS BEFORE YOU DIG, DRILL, OR BUST - STOP CALL



PLOTTED BY: CMeszler
 PLOT DATE: 12/26/2019
 LAST SAVED: 10:37:39 AM
 LOCATION: T:\17-113 Blondy Jhune\1800457\4 - Design\Plan Set\3. Roadway\plansp03.DGN

REVISIONS	
DATE	DESCRIPTION
10/04/19	8 MODIFIED SIGNAGE AND MILLING

LAKES ENGINEERING, INC.

CHRISTOPHER P. MESZLER, P.E.
 LIC. No. 112052
 1903 CENTRAL DRIVE, SUITE #102
 BEDFORD, TX 76021
 PHONE: 817.618.3640
 TBPE REG. F-15243



BLONDY JHUNE RD. RECONST.
 CITY OF LUCAS
 PUBLIC WORKS DEPARTMENT
 665 COUNTRY CLUB ROAD
 LUCAS, TX. 75002

SIGNING & PAVEMENT MARKINGS

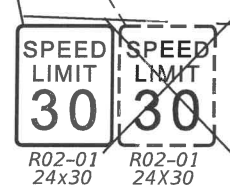
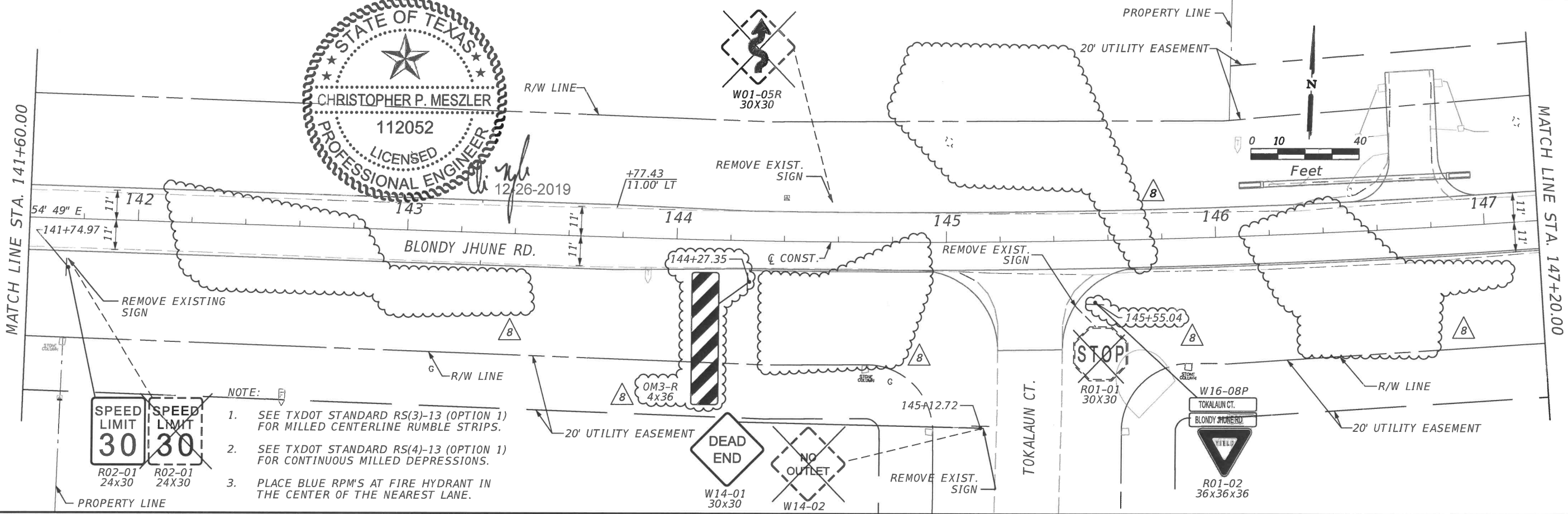
SHEET NO.
62

CALL BEFORE YOU DIG
 TEXAS ONE CALL SYSTEM
 1-800-DIG-TESS
 48 HOURS NOTICE BEFORE YOU DIG, DRILL, OR BLAST - STOP CALL

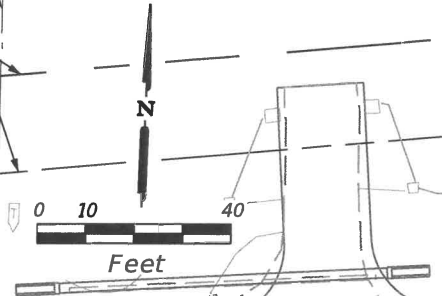


MATCH LINE STA. 141+60.00

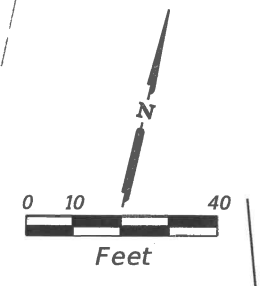
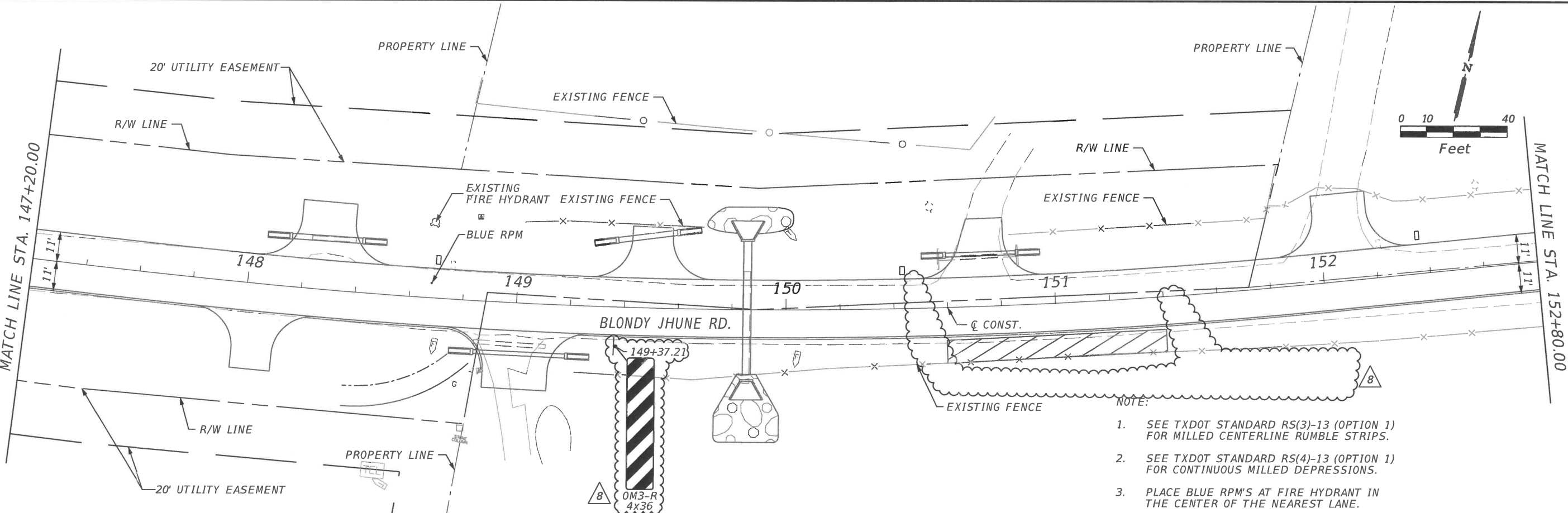
MATCH LINE STA. 147+20.00



- NOTE:
1. SEE TXDOT STANDARD RS(3)-13 (OPTION 1) FOR MILLED CENTERLINE RUMBLE STRIPS.
 2. SEE TXDOT STANDARD RS(4)-13 (OPTION 1) FOR CONTINUOUS MILLED DEPRESSIONS.
 3. PLACE BLUE RPM'S AT FIRE HYDRANT IN THE CENTER OF THE NEAREST LANE.



Cmeszler
 12/26/2019
 PLOT DATE:
 10:37:59 AM
 LAST SAVED:
 T:\17-113 Blondy Jhune\1800457\4 - Design\Plan Set\3. Roadway\plansp04.DGN

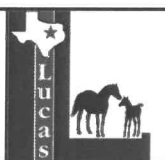


- NOTE:
1. SEE TXDOT STANDARD RS(3)-13 (OPTION 1) FOR MILLED CENTERLINE RUMBLE STRIPS.
 2. SEE TXDOT STANDARD RS(4)-13 (OPTION 1) FOR CONTINUOUS MILLED DEPRESSIONS.
 3. PLACE BLUE RPM'S AT FIRE HYDRANT IN THE CENTER OF THE NEAREST LANE.

DATE	REVISIONS DESCRIPTION
10/04/19	8 MODIFIED SIGNAGE AND MILLING

LAKES ENGINEERING, INC.

CHRISTOPHER P. MESZLER, P.E.
 LIC. No. 112052
 1903 CENTRAL DRIVE, SUITE #102
 BEDFORD, TX 76021
 PHONE: 817.618.3640
 TBPE REG. F-15243



BLONDY JHUNE RD. RECONST.
 CITY OF LUCAS
 PUBLIC WORKS DEPARTMENT
 665 COUNTRY CLUB ROAD
 LUCAS, TX. 75002

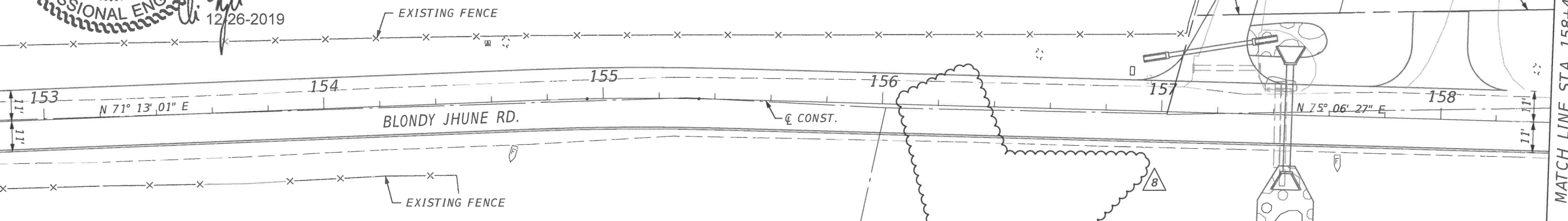
SIGNING & PAVEMENT MARKINGS

SHEET NO.
63

CALL BEFORE YOU DIG
 48 HOURS NOTICE BEFORE YOU DIG, DRILL,
 OR BLAST - STOP CALL
 TEXAS ONE CALL SYSTEM
 1-800-DIG-TESS



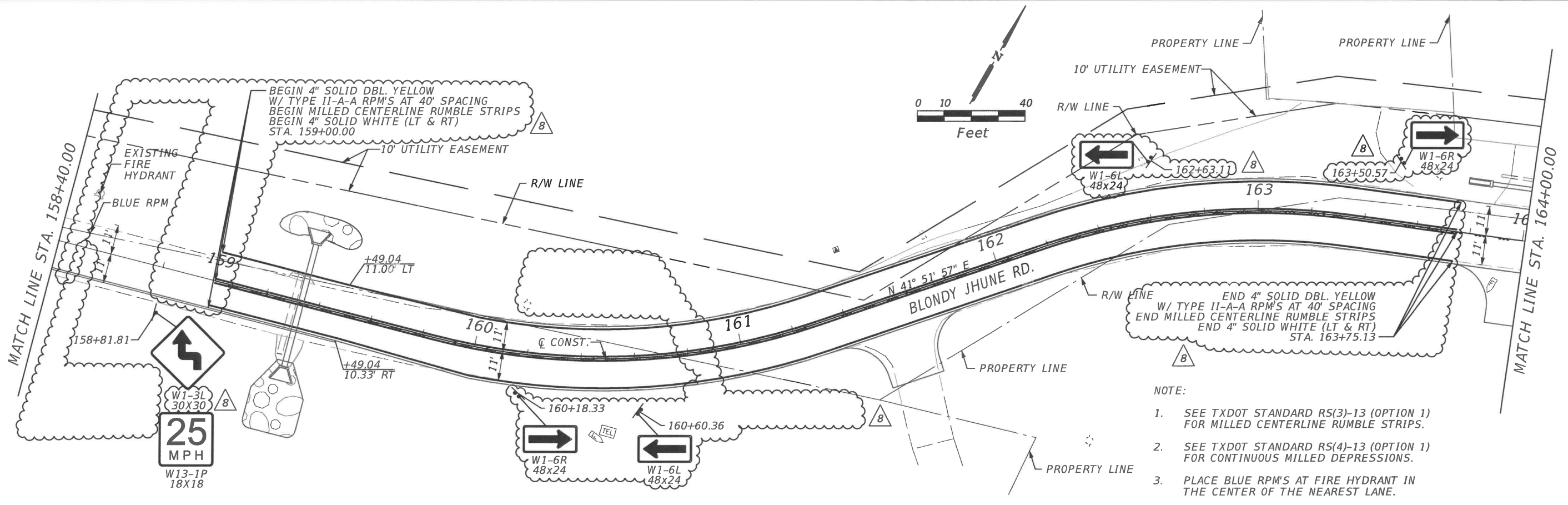
MATCH LINE STA. 152+80.00



- NOTE:
1. SEE TXDOT STANDARD RS(3)-13 (OPTION 1) FOR MILLED CENTERLINE RUMBLE STRIPS.
 2. SEE TXDOT STANDARD RS(4)-13 (OPTION 1) FOR CONTINUOUS MILLED DEPRESSIONS.
 3. PLACE BLUE RPM'S AT FIRE HYDRANT IN THE CENTER OF THE NEAREST LANE.

MATCH LINE STA. 158+40.00

PLOTTED BY: CMeszler
 PLOT DATE: 12/26/2019
 LAST SAVED: 10:37:40 AM
 LOCATION: T:\17-113 Blondy Jhune\1800457\4 - Design\Plan Set\3. Roadway\plansp05.DGN



- NOTE:
1. SEE TXDOT STANDARD RS(3)-13 (OPTION 1) FOR MILLED CENTERLINE RUMBLE STRIPS.
 2. SEE TXDOT STANDARD RS(4)-13 (OPTION 1) FOR CONTINUOUS MILLED DEPRESSIONS.
 3. PLACE BLUE RPM'S AT FIRE HYDRANT IN THE CENTER OF THE NEAREST LANE.

MATCH LINE STA. 164+00.00

DATE	REVISIONS DESCRIPTION
10/04/19	8 MODIFIED SIGNAGE AND MILLING

LAKES ENGINEERING, INC.

CHRISTOPHER P. MESZLER, P.E.
 LIC. No. 112052
 1903 CENTRAL DRIVE, SUITE #102
 BEDFORD, TX 76021
 PHONE: 817.618.3640
 TBPE REG. F-15243

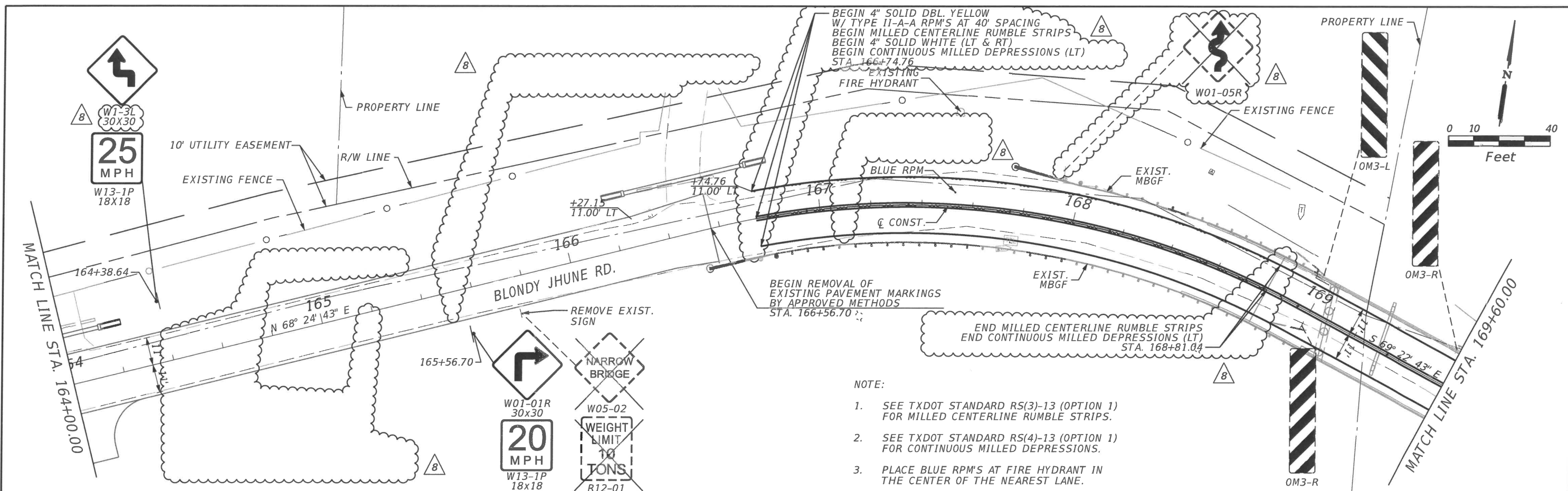


BLONDY JHUNE RD. RECONST.
 CITY OF LUCAS
 PUBLIC WORKS DEPARTMENT
 665 COUNTRY CLUB ROAD
 LUCAS, TX. 75002

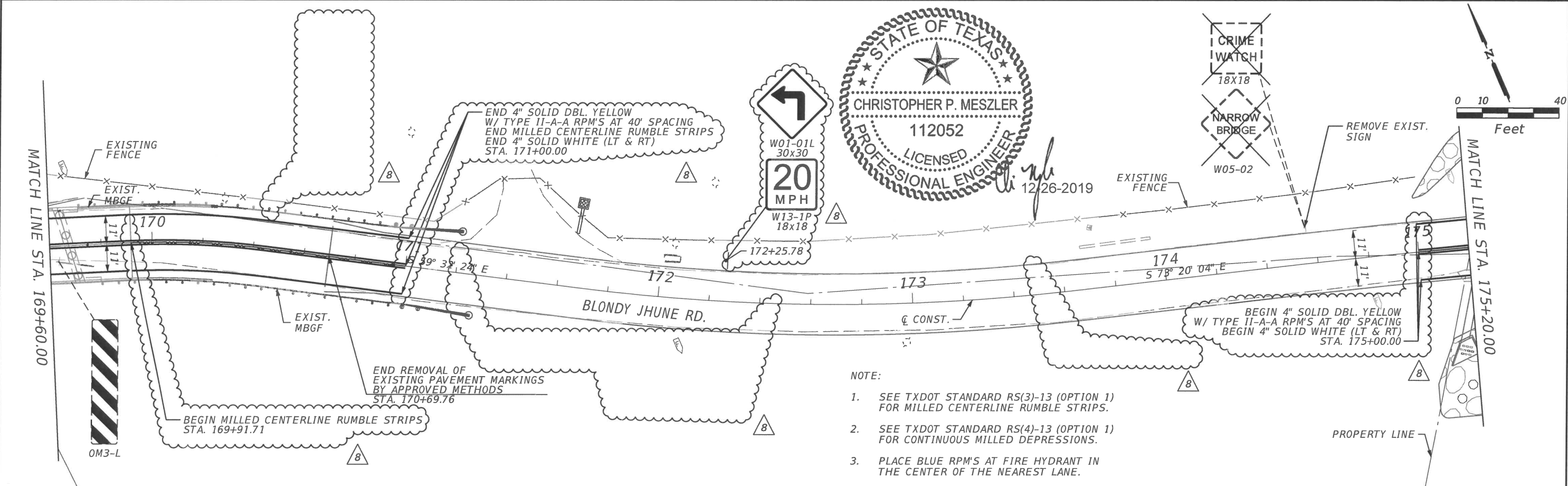
SIGNING & PAVEMENT MARKINGS

SHEET NO.
64

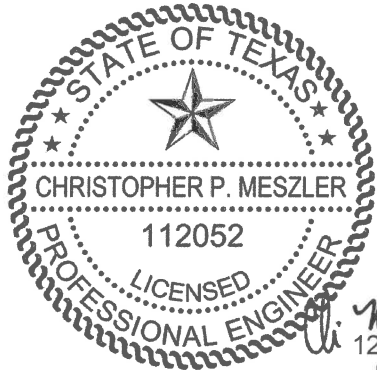
CALL BEFORE YOU DIG
 TEXAS ONE CALL SYSTEM
 1-800-DIG-TESS
 48 HOURS BEFORE YOU DIG, DRILL, OR BLAST - STOP CALL



- NOTE:
1. SEE TXDOT STANDARD RS(3)-13 (OPTION 1) FOR MILLED CENTERLINE RUMBLE STRIPS.
 2. SEE TXDOT STANDARD RS(4)-13 (OPTION 1) FOR CONTINUOUS MILLED DEPRESSIONS.
 3. PLACE BLUE RPM'S AT FIRE HYDRANT IN THE CENTER OF THE NEAREST LANE.



- NOTE:
1. SEE TXDOT STANDARD RS(3)-13 (OPTION 1) FOR MILLED CENTERLINE RUMBLE STRIPS.
 2. SEE TXDOT STANDARD RS(4)-13 (OPTION 1) FOR CONTINUOUS MILLED DEPRESSIONS.
 3. PLACE BLUE RPM'S AT FIRE HYDRANT IN THE CENTER OF THE NEAREST LANE.



PLOTTED BY: Cmeszler
 PLOT DATE: 12/26/2019
 LAST SAVED: 10:37:41 AM
 LOCATION: T:\17-113 Blondy Jhune\1800457\4 - Design\Plan Set\3. Roadway\plansp06.DGN

DATE	REVISIONS DESCRIPTION
10/04/19	8 MODIFIED SIGNAGE AND MILLING

LAKES ENGINEERING, INC.

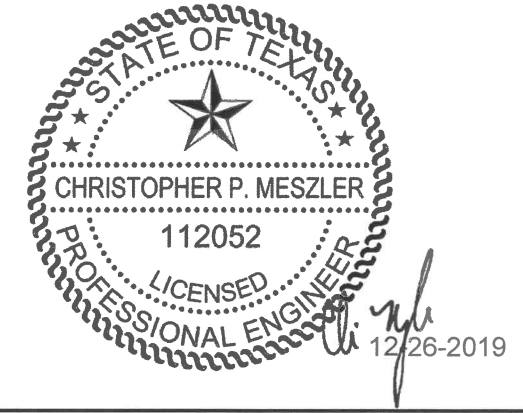
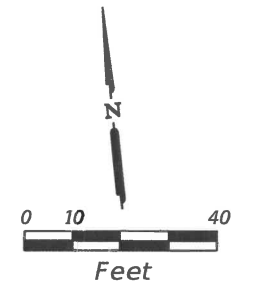
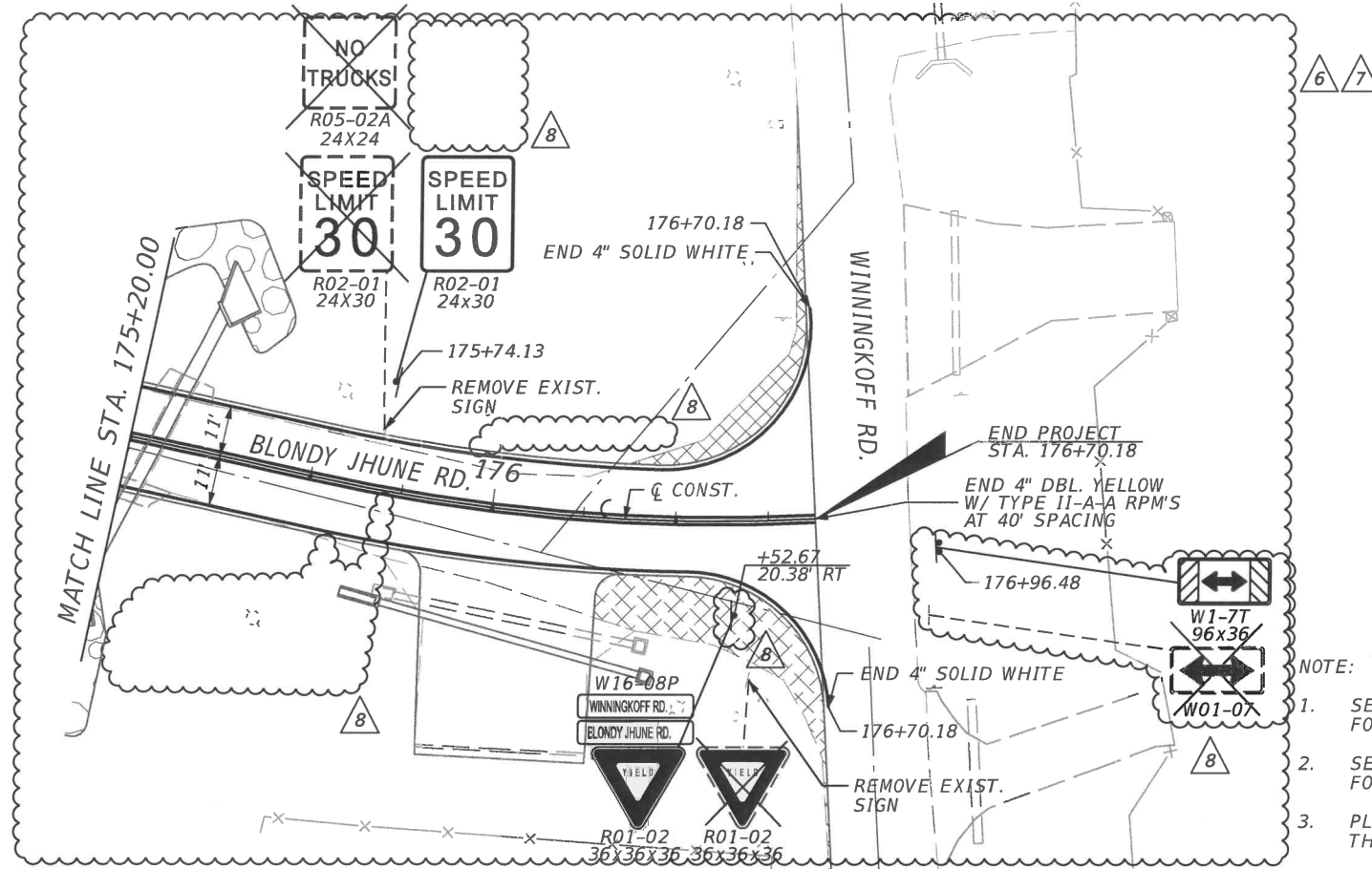
CHRISTOPHER P. MESZLER, P.E.
 LIC. No. 112052
 1903 CENTRAL DRIVE, SUITE #102
 BEDFORD, TX 76021
 PHONE: 817.618.3640
 TBPE REG. F-15243

BLONDY JHUNE RD. RECONST.
 CITY OF LUCAS
 PUBLIC WORKS DEPARTMENT
 665 COUNTRY CLUB ROAD
 LUCAS, TX. 75002

SIGNING & PAVEMENT MARKINGS

SHEET NO.
65

CALL BEFORE YOU DIG
 TEXAS ONE CALL SYSTEM
 1-800-DIG-TESS
 48 HOURS BEFORE YOU DIG, DRILL, OR BLAST - STOP CALL



- NOTE:
1. SEE TXDOT STANDARD RS(3)-13 (OPTION 1) FOR MILLED CENTERLINE RUMBLE STRIPS.
 2. SEE TXDOT STANDARD RS(4)-13 (OPTION 1) FOR CONTINUOUS MILLED DEPRESSIONS.
 3. PLACE BLUE RPM'S AT FIRE HYDRANT IN THE CENTER OF THE NEAREST LANE.

PLOTTED BY: CMeszler
 PLOT DATE: 12/26/2019
 LAST SAVED: 10:37:42 AM
 LOCATION: T:\17-113 Blondy Jhune\1800457\4 - Design\Plan Set\3. Roadway\plansp07.DGN

REVISIONS	
DATE	DESCRIPTION
06/02/19	△ MODIFIED PAVEMENT MARKINGS
08/15/19	△ MODIFIED PAVEMENT MARKINGS
10/04/19	△ MODIFIED SIGNAGE



CHRISTOPHER P. MESZLER, P.E.
 LIC. No. 112052
 1903 CENTRAL DRIVE, SUITE #102
 BEDFORD, TX 76021
 PHONE: 817.618.3640
 TBPE REG. F-15243



BLONDY JHUNE RD. RECONST.
 CITY OF LUCAS
 PUBLIC WORKS DEPARTMENT
 665 COUNTRY CLUB ROAD
 LUCAS, TX. 75002

SIGNING & PAVEMENT MARKINGS

SHEET NO.	66
-----------	----

CALL BEFORE YOU DIG
 TEXAS ONE CALL SYSTEM
 1-800-DIG-TESS
 48 HOURS NOTICE BEFORE DIG, DRILL, OR BLAST - STOP CALL