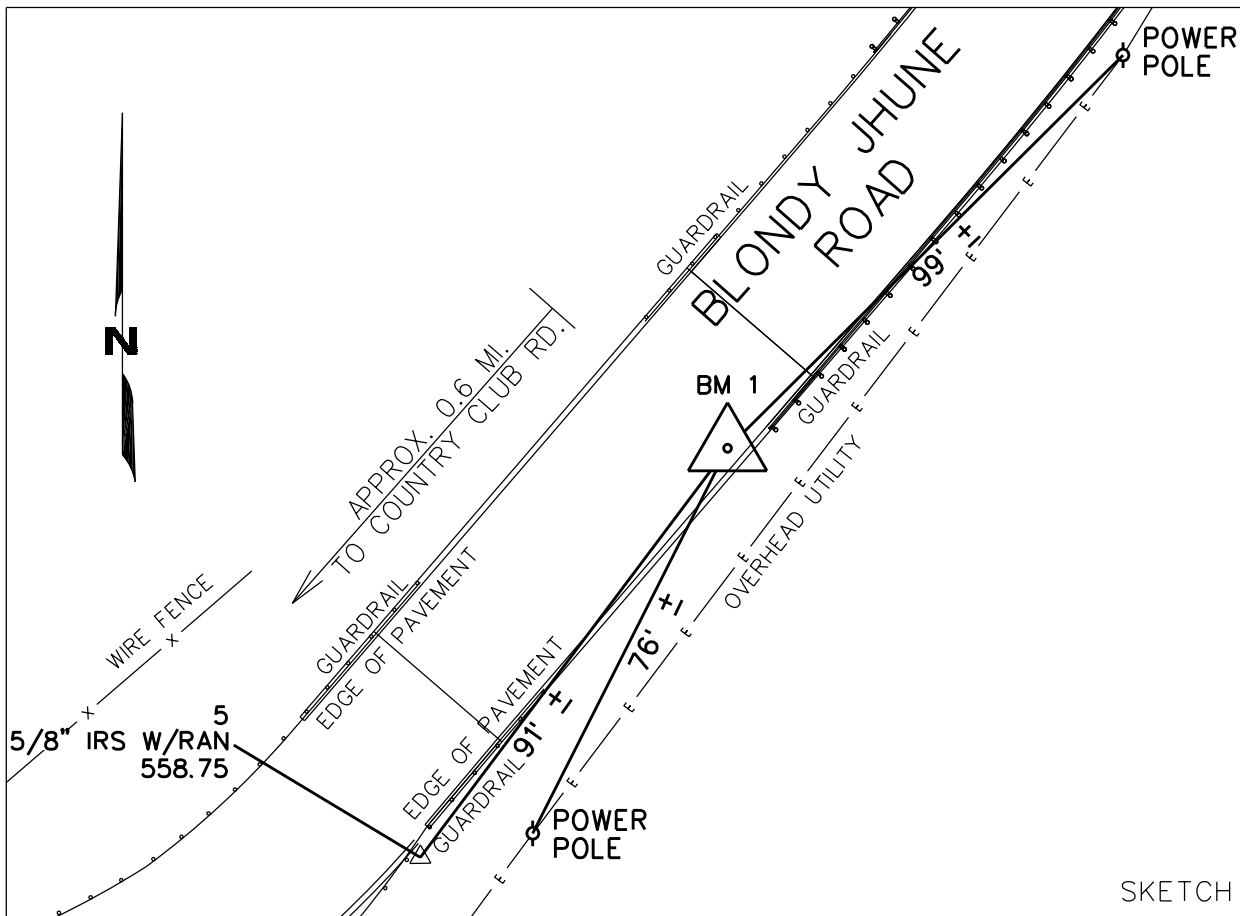




City of Lucas
665 Country Club Road
Lucas, Texas 75002-7651

BLONDY JHUNE RD.
STATION ID: BM 1

COLLIN COUNTY, TEXAS



SKETCH IS NOT TO SCALE

GENERAL DESCRIPTION: 3" BRASS CAP SET IN CONCRETE. BM 1 IS LOCATED ON BLONDY JHUNE ROAD APPROXIMATELY 0.6 MILES EAST OF THE INTERSECTION OF BLONDY JHUNE ROAD AND COUNTRY CLUB ROAD. BM 1 IS LOCATED 99 ± FEET SOUTHWEST OF A POWER POLE, 91 ± FEET NORTHEAST OF A 5/8" IRON ROD SET AND 76 ± FEET NORTHEAST OF A POWER POLE.

TEXAS COORDINATE SYSTEM

NAD 83 (EPOCH 2010)

NAVD 88 (GEOID 12B) UNITS: US SURVEY FEET

SCALE FACTOR: 1.0001527153 (GRID X SCALE FACTOR = SURFACE)

GRID FEET: $\frac{N=7090771.52}{E=2554571.39}$ SURFACE FEET: $\frac{N=7091854.39}{E=2554961.51}$

LATITUDE = 33° 06' 22.78973" N

LONGITUDE = 96° 35' 09.10295" W

ELEVATION: 560.26' A.M.S.L.

TYPE OF MONUMENT: 3" BRASS CAP SET IN CONCRETE



7101 Envoy Court
Dallas, Texas 75247
(214) 631-7888
Fax: (214) 631-7103

Texas Firm Registration No.
10064300