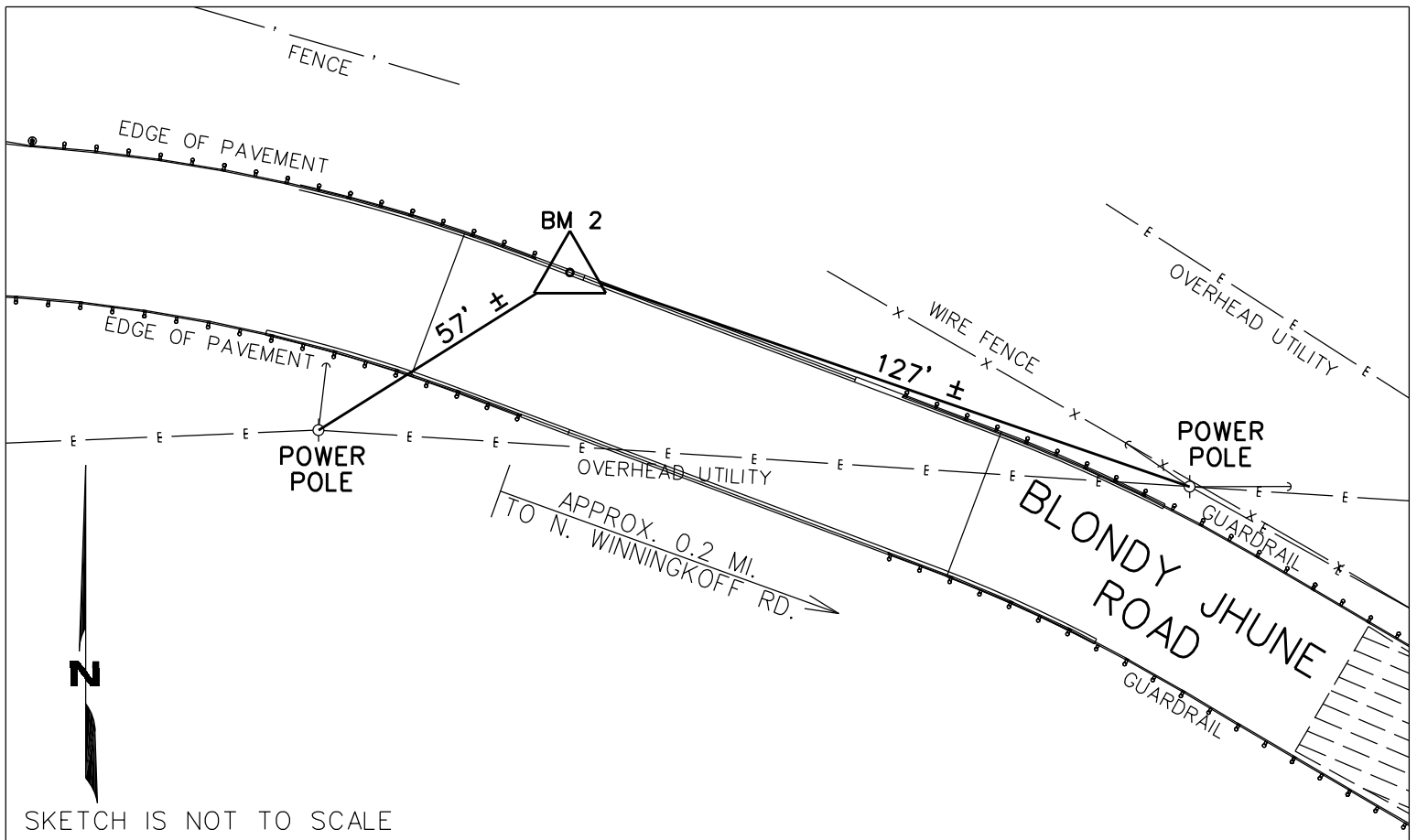




City of Lucas
665 Country Club Road
Lucas, Texas 75002-7651

BLONDY JHUNE RD.
STATION ID: BM 2

COLLIN COUNTY, TEXAS



SKETCH IS NOT TO SCALE

GENERAL DESCRIPTION: 3" BRASS CAP SET IN CONCRETE. BM2 IS LOCATED ON BLONDY JHUNE ROAD APPROXIMATELY 0.2 MILES WEST OF THE INTERSECTION OF BLONDY JHUNE ROAD AND NORTH WINNINGKOFF ROAD. BM2 IS LOCATED 127 ± FEET NORTHWEST OF A POWER POLE AND 57 ± FEET NORTHEAST OF A POWER POLE.

TEXAS COORDINATE SYSTEM

NAD 83 (EPOCH 2010)
NAVD 88 (GEOID 12B) UNITS: US SURVEY FEET
SCALE FACTOR: 1.0001527153 (GRID X SCALE FACTOR = SURFACE)

GRID FEET:	$\frac{N=7092229.57}{E=2558627.06}$	SURFACE FEET:	$\frac{N=7093312.66}{E=2559017.80}$
LATITUDE = 33° 06' 36.48107" N		LONGITUDE = 96° 34' 21.11351" W	

ELEVATION: 527.09' A.M.S.L.

TYPE OF MONUMENT: 3" BRASS CAP SET IN CONCRETE



7101 Envoy Court
Dallas, Texas 75247
(214) 631-7888
Fax: (214) 631-7103

Texas Firm Registration No.
10064300