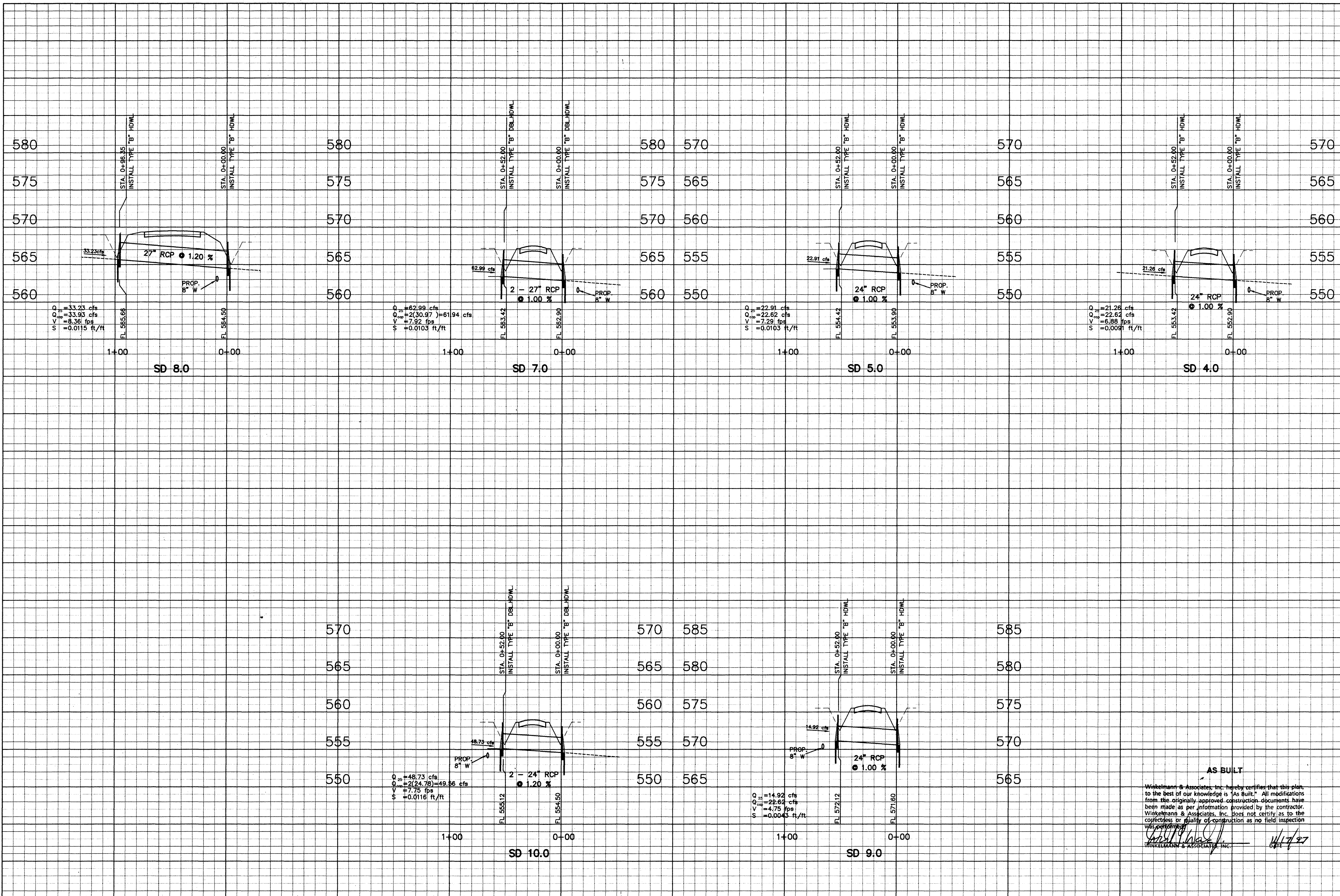


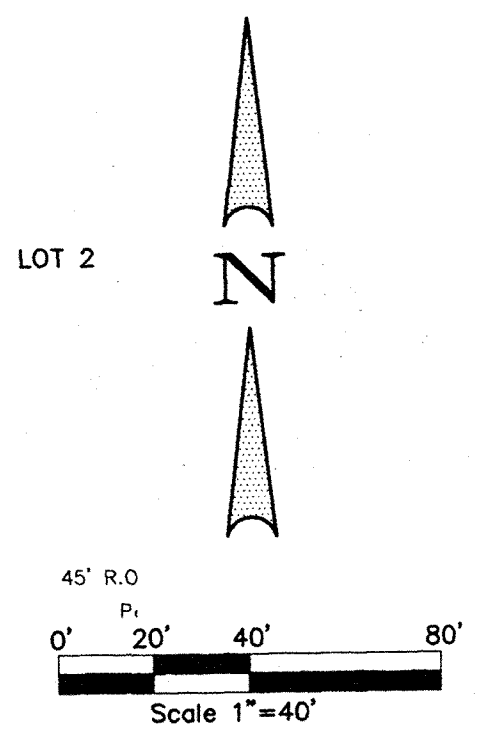
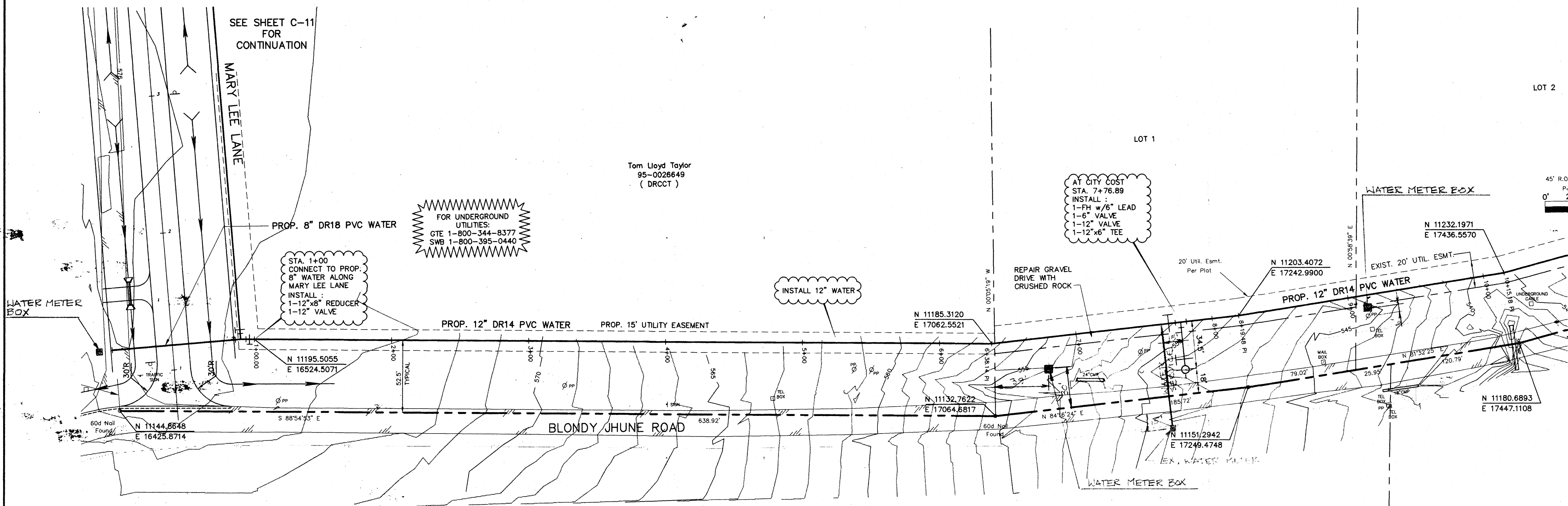
BM :
 □ Cut Found C Top culvert S. Side White Rock Trail at FM 1378 Elev.=596.42
 TBM :
 □ Cut Set on edge of Pmnt. N. side Orchard Gap Laque approx. 4.0' from end of Pmnt. Elev.=594.68



Winkelmann & Associates, Inc.
 CONSULTING CIVIL ENGINEERS • SURVEYORS
 1000 WEST ROAD, SUITE 200
 DALLAS, TEXAS 75242
 (972) 442-7999 FAX
 (972) 442-7999
 JOHN W. KIRBY SURVEY, ABSTRACT NO. 506
 CITY OF LUCAS
 COLLIN COUNTY, TEXAS
 UNITED STANDARD REALTY MORTGAGE CORPORATION
 718 WEST ARAPAHO, STE 100
 RICHARDSON, TEXAS 75080
 (972) 783-8888

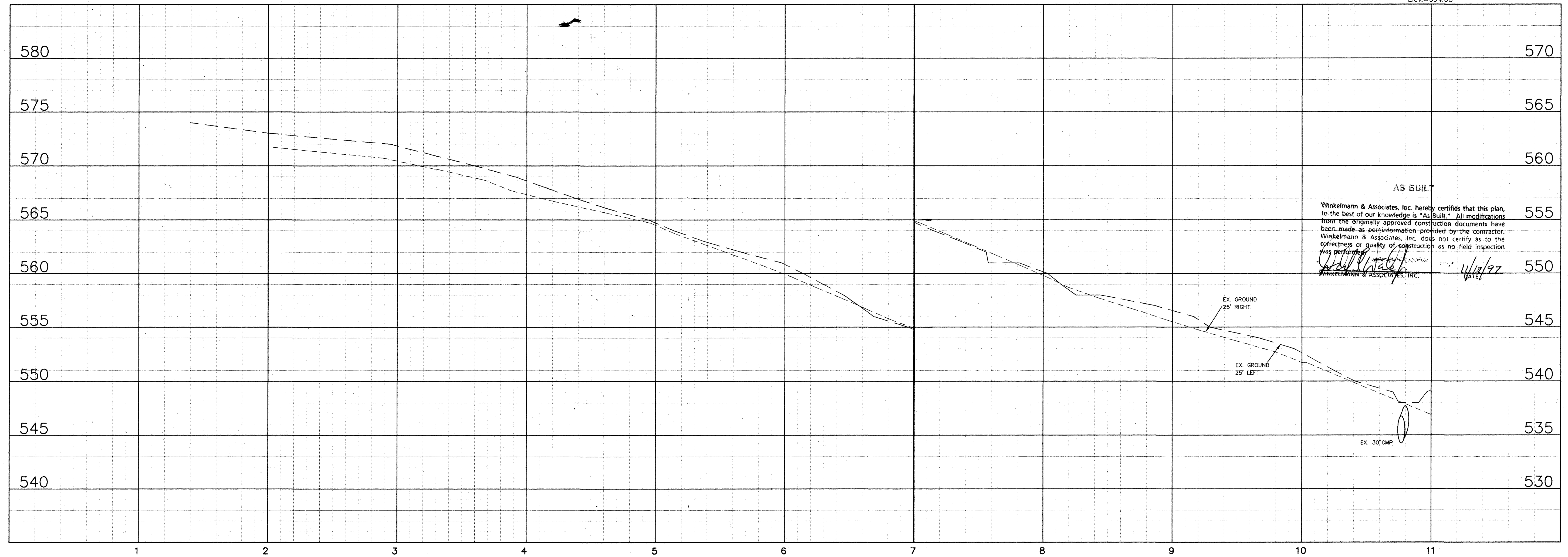
Scale: H: 1"=40' Date: 3/27/97
 Designed By: DFW
 Drawn By: TIC
 Checked By: DFW
 File: 234-PF13.DWG
 Project No.: 23401.01

AS BUILT
 Winkelmann & Associates, Inc. hereby certifies that this plan, to the best of our knowledge is "As Built." All modifications from the originally approved construction documents have been made as per information provided by the contractor. Winkelmann & Associates, Inc. does not certify as to the correctness or quality of construction as no field inspection was performed.
 Winkelman & Associates, Inc. 3/17/97
SHEET
C-23



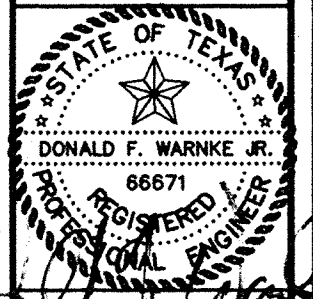
NOTE:
SEE PLANS FOR
CREEKBEND ESTATES
PH.II FOR CONTINUATION
OF 8" WATERLINE

BM :
"T" Cut Found C Top culvert S. Side White Rock Trail
at FM 1378 Elev.=596.42
TBM :
"T" Cut Set on edge of Pvmnt. N. side Orchard Gap
Laqne approx. 4.0' from end of Pvmnt.
Elev.=594.68



AS BUILT
Winkelmann & Associates, Inc. hereby certifies that this plan,
to the best of our knowledge is "As Built." All modifications
from the originally approved construction documents have
been made as per information provided by the contractor.
Winkelmann & Associates, Inc. does not certify as to the
correctness or quality of construction as no field inspection
was performed.
[Signature] 11/17/97
Winkelmann & Associates, Inc.

Winkelmann & Associates, Inc.
CONSULTING CIVIL ENGINEERS & SURVEYORS
12800 HILLCREST ROAD, SUITE 200
DALLAS, TEXAS 75230
(972) 480-2008
FAX (972) 480-2008

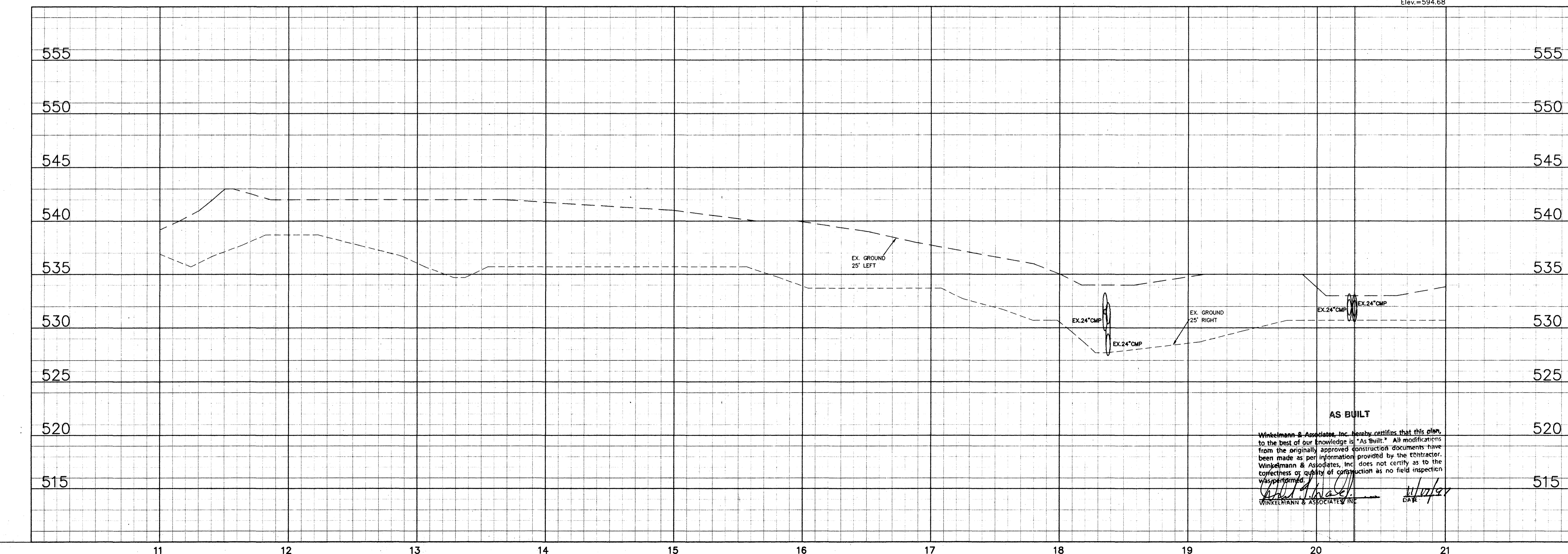
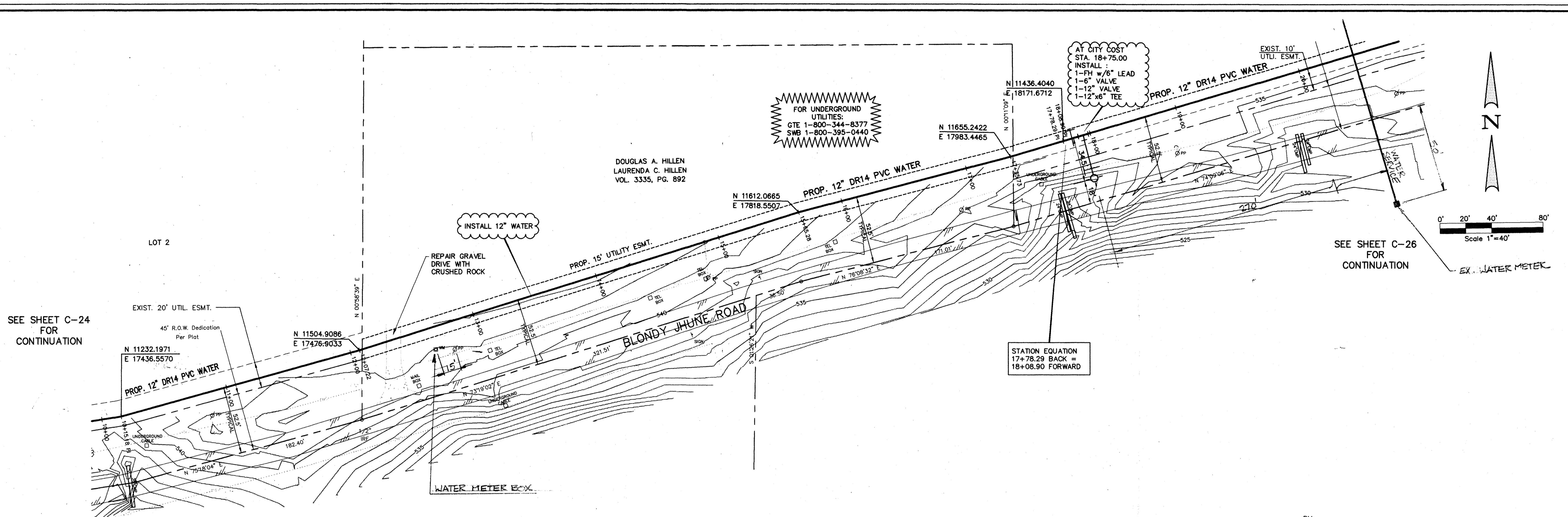


JOHN W. KIRBY, SURVEY, ABSTRACT NO. 506
CITY OF LUCAS
COLLIN COUNTY, TEXAS
UNITED STANDARD REALTY MORTGAGE CORPORATION
718 WEST ARAPAHO, STE. 100
RICHARDSON, TEXAS 75080
(972) 783-8888

WATER PLAN & PROFILE
BLONDY JHUNE ROAD
STA. 1+00 TO STA. 11+00

Scale : 1"=40'
Date : 7/18/97
Designed By : DFW
Drawn By : TIC
Checked By : DFW
File : 234BJPP1.dwg
Project No. : 23401.01

C-24



Winkelmann & Associates, Inc.
 CONSULTING CIVIL ENGINEERS • SURVEYORS
 17800 MILCREEK ROAD, SUITE 200
 DALLAS, TEXAS 75248
 (972) 492-1992 FAX

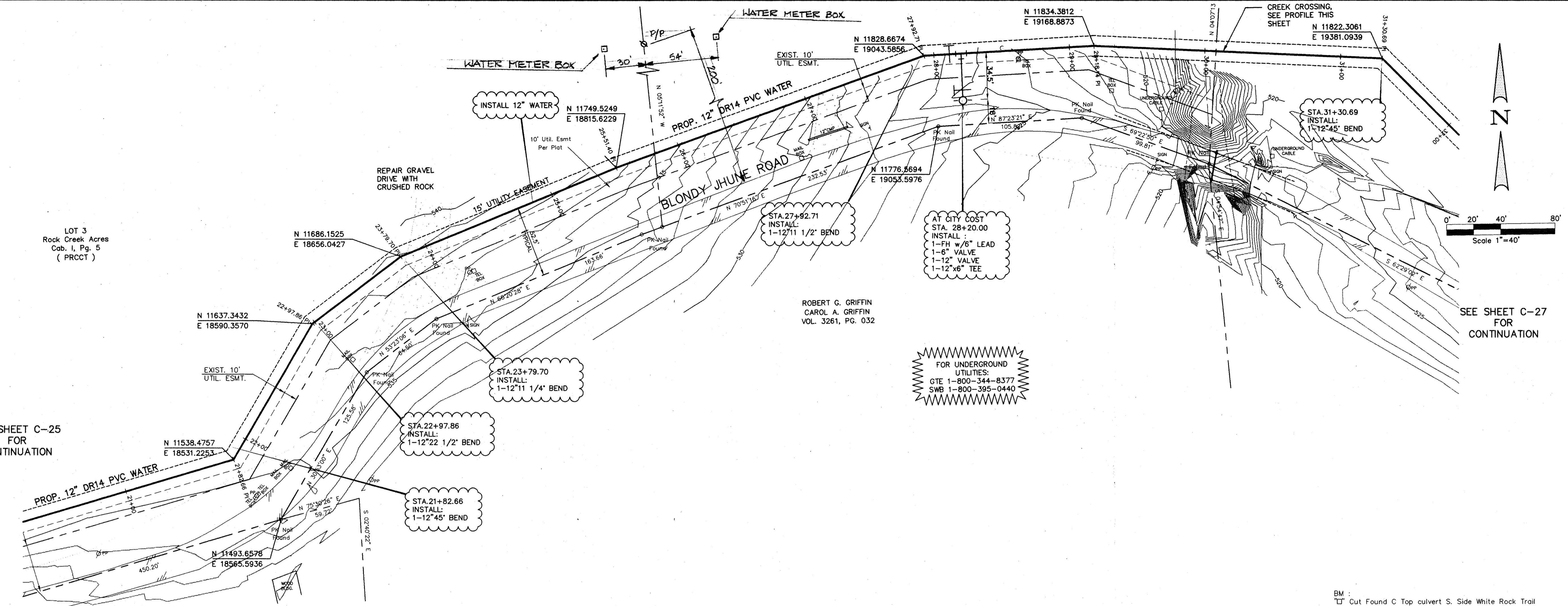
JOHN W. KIRBY SURVEY, ABSTRACT NO. 506
 CITY OF LUCAS
 COLLIN COUNTY, TEXAS
 UNITED STANDARD REALTY MORTGAGE CORPORATION
 718 WEST ARAPAHO, SUITE 100
 RICHARDSON, TEXAS 75080
 (972) 783-8888

WATER PLAN & PROFILE
BLONDY JHUNE ROAD
 STA. 11+00 TO STA. 21+00

Scale: 1" = 40'
 Date: 7/18/97
 Designed By: DFW
 Drawn By: TJC
 Checked By: DFW
 File: 234BIP2.dwg
 Project No.: 23401.01

AS BUILT
 Winkelmann & Associates, Inc. hereby certifies that this plan, to the best of our knowledge is "As Built." All modifications from the originally approved construction documents have been made as per information provided by the contractor. Winkelmann & Associates, Inc. does not certify as to the correctness or quality of construction as no field inspection was performed.
 [Signatures]

SHEET
C-25



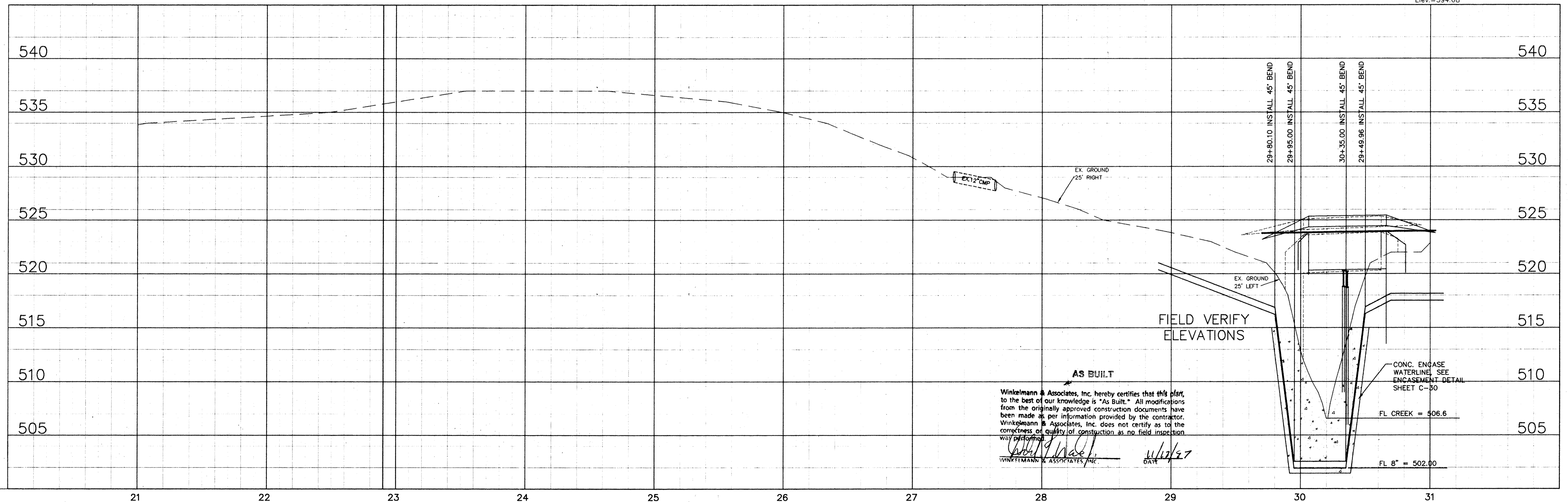
SEE SHEET C-25
FOR
CONTINUATION

SEE SHEET C-27
FOR
CONTINUATION

ROBERT G. GRIFFIN
CAROL A. GRIFFIN
VOL. 3261, PG. 032

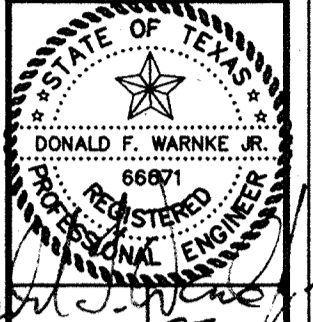
FOR UNDERGROUND
UTILITIES:
GTE 1-800-344-8377
SMB 1-800-395-0440

BM :
"T" Cut Found C Top culvert S. Side White Rock Trail
at FM 1378 Elev.=596.42
TBM :
"T" Cut Set on edge of Pvmnt. N. side Orchard Gap
Loane approx. 4.0' from end of Pvmnt.
Elev.=594.68



AS BUILT
Winkelmann & Associates, Inc. hereby certifies that this plan,
to the best of our knowledge is "As Built." All modifications
from the originally approved construction documents have
been made as per information provided by the contractor.
Winkelmann & Associates, Inc. does not certify as to the
correctness of quality of construction as no field inspection
was performed.
[Signature] 8/17/97
WINKELMANN & ASSOCIATES, INC. DATE

Winkelmann & Associates, Inc.
CONSULTING CIVIL ENGINEERS • SURVEYORS
1800 HILLCREST ROAD, SUITE 200
DALLAS, TEXAS 75230
(972) 462-7000
(972) 462-7000 FAX

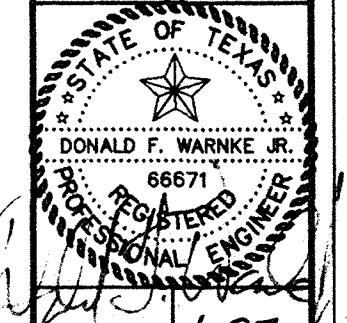
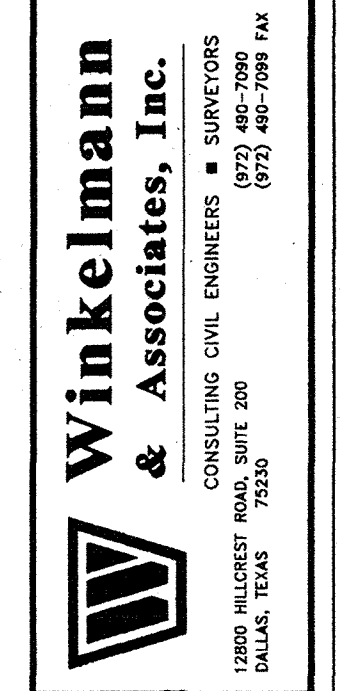


JOHN W. KIRBY SURVEY ABSTRACT NO. 506
CITY OF LUCAS
COLLIN COUNTY, TEXAS
UNITED STANDARD REALTY MORTGAGE CORPORATION
718 WEST ARAPAHO, STE. 100
RICHARDSON, TEXAS 75080
(972) 783-8888

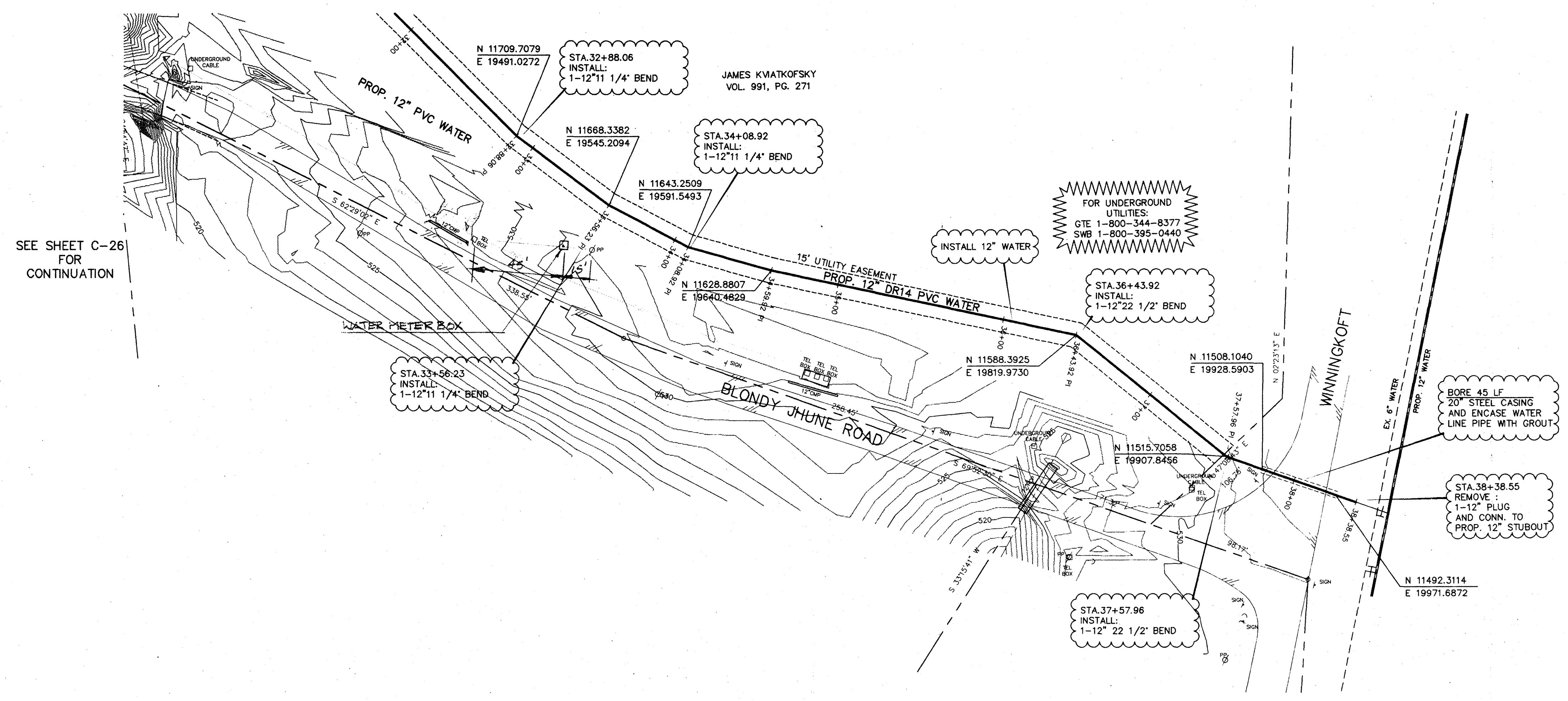
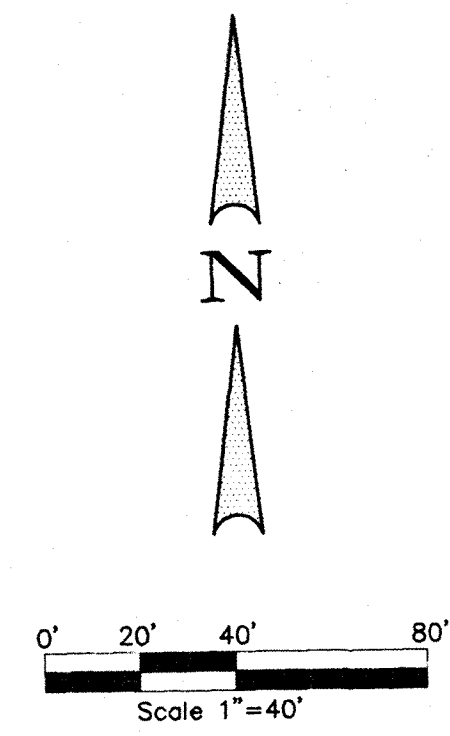
WATER PLAN & PROFILE
BLODDY JHUNE ROAD
STA. 21+00 TO STA. 31+00

Scale : 1" = 40'
Date : 7/16/97
Designed By : DJW
Drawn By : DJC
Checked By : DJW
File : 234BPP0.dwg
Project No. : 23401.01

SHEET
C-26

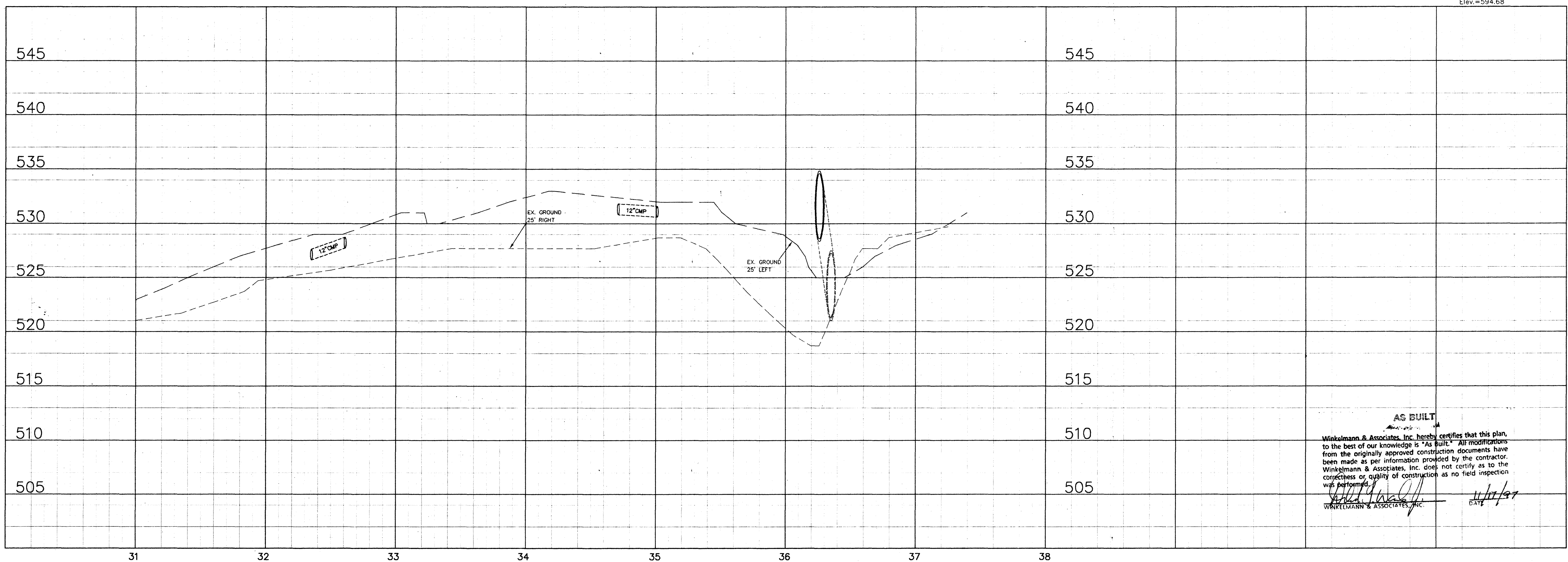


JOHN W. KIRBY SURVEY, ABSTRACT NO. 506
 CITY OF LUCAS
 COLLIN COUNTY, TEXAS
 UNITED STANDARD REALTY MORTGAGE CORPORATION
 718 WEST ARPAHO, STE. 100
 RICHARDSON, TEXAS 75080
 (972) 763-8888



SEE SHEET C-26 FOR CONTINUATION

BM :
 □ Cut Found C Top culvert S. Side White Rock Trail at FM 1378 Elev.=596.42
 TBM :
 □ Cut Set on edge of Pmnt. N. side Orchard Gap Loane approx. 4.0' from end of Pmnt. Elev.=594.68



AS BUILT
 Winkelmann & Associates, Inc. hereby certifies that this plan, to the best of our knowledge is "As Built." All modifications from the originally approved construction documents have been made as per information provided by the contractor. Winkelmann & Associates, Inc. does not certify as to the correctness or quality of construction as no field inspection was performed.
 [Signature]
 WINKELMANN & ASSOCIATES, INC. DATE: 11/17/97

WATER PLAN & PROFILE
BLONDY JHUNE ROAD
 STA. 31+00 TO STA. 38+00

Scale: 1"=40'
 Date: 7/18/97
 Designed By: DFW
 Drawn By: DFC
 Checked By: DFW
 File: 234BJPP4.dwg
 Project No.: 23401.01