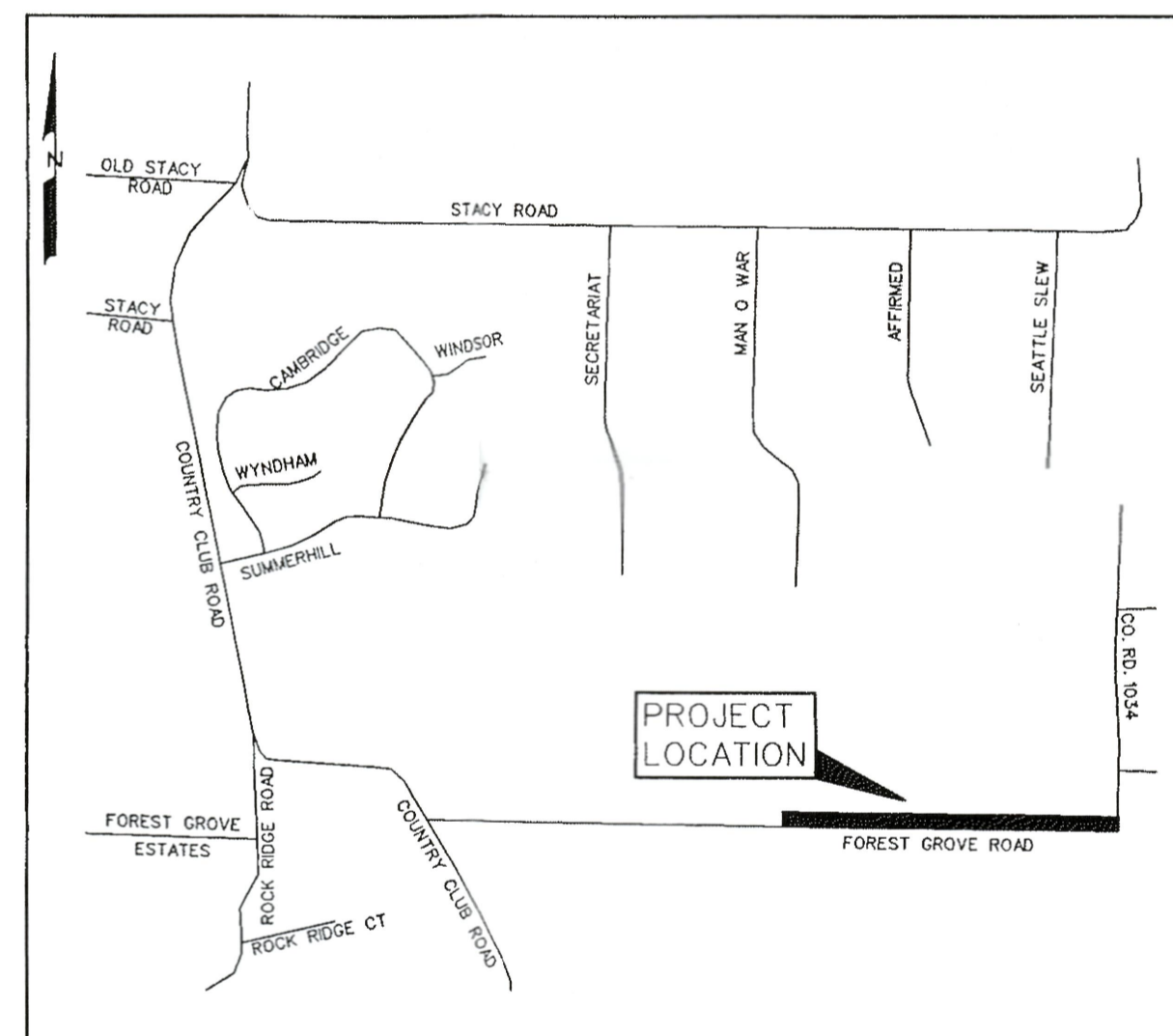


DEVELOPMENT PLANS
FOR
AMHERST ESTATES
OFFSITE WATER LINE
CITY OF LUCAS, TEXAS



VICINITY MAP
NOT TO SCALE

PREPARED FOR
SKORBURG COMPANY
3838 OAK LAWN AVE., SUITE 1212, DALLAS, TEXAS 75219

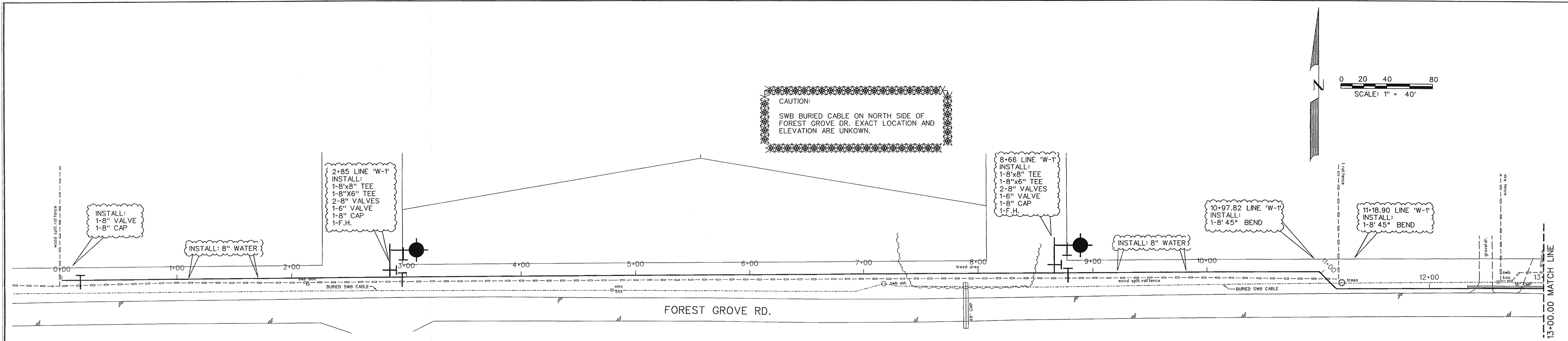
INDEX

- 1 TITLE
- 2 WATERLINE PLAN AND PROFILE LINE 'W-1'
- 3 WATERLINE PLAN AND PROFILE LINE 'W-1'

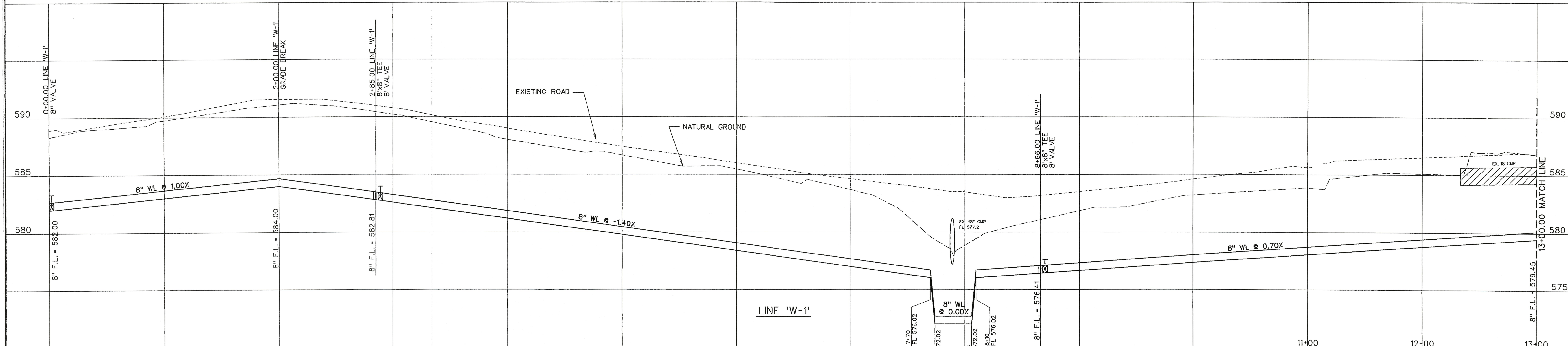
CORWIN ENGINEERING, INC. — CONSULTING ENGINEERS
200 W. BELMONT, SUITE E ALLEN, TEXAS 75013



The seal appearing on this document was authorized by Warren L. Corwin, P.E. 57875, on June 21, 2005



NOTE:
 ANY ASPHALT PVMT., GRAVEL DRIVE OR CMP CULVERTS THAT ARE REMOVED FOR CONSTRUCTION MUST BE REPLACED. DRIVES SHALL REMAIN OPERABLE EACH NIGHT.



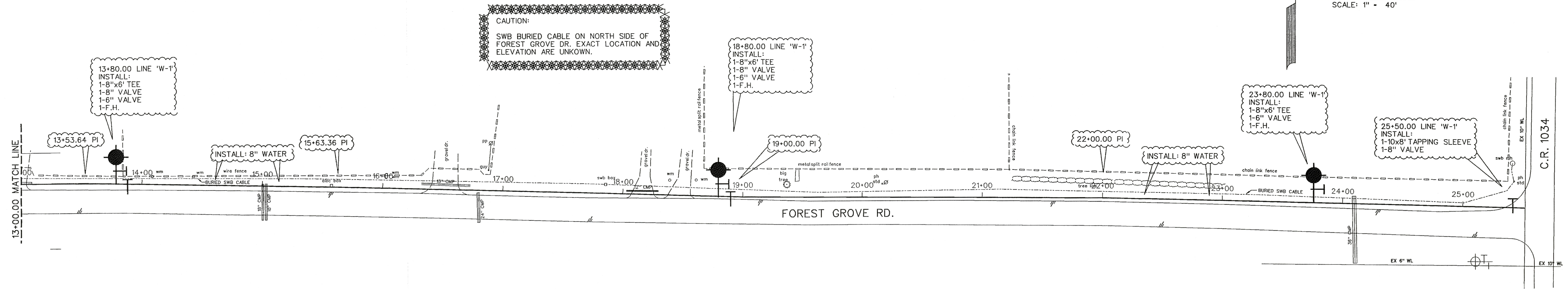
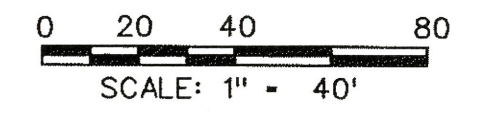
The seal appearing on this document was authorized by Warren L. Corwin, P.E. 57875, on June 21, 2005

CORWIN ENGINEERING, INC.
 200 W. BELMONT, SUITE E
 ALLEN, TEXAS 75013 (972)396-1200

DEVELOPMENT PLANS FOR
AMHERST ESTATES
 OFFSITE WATER LINE
 CITY OF LUCAS, TEXAS

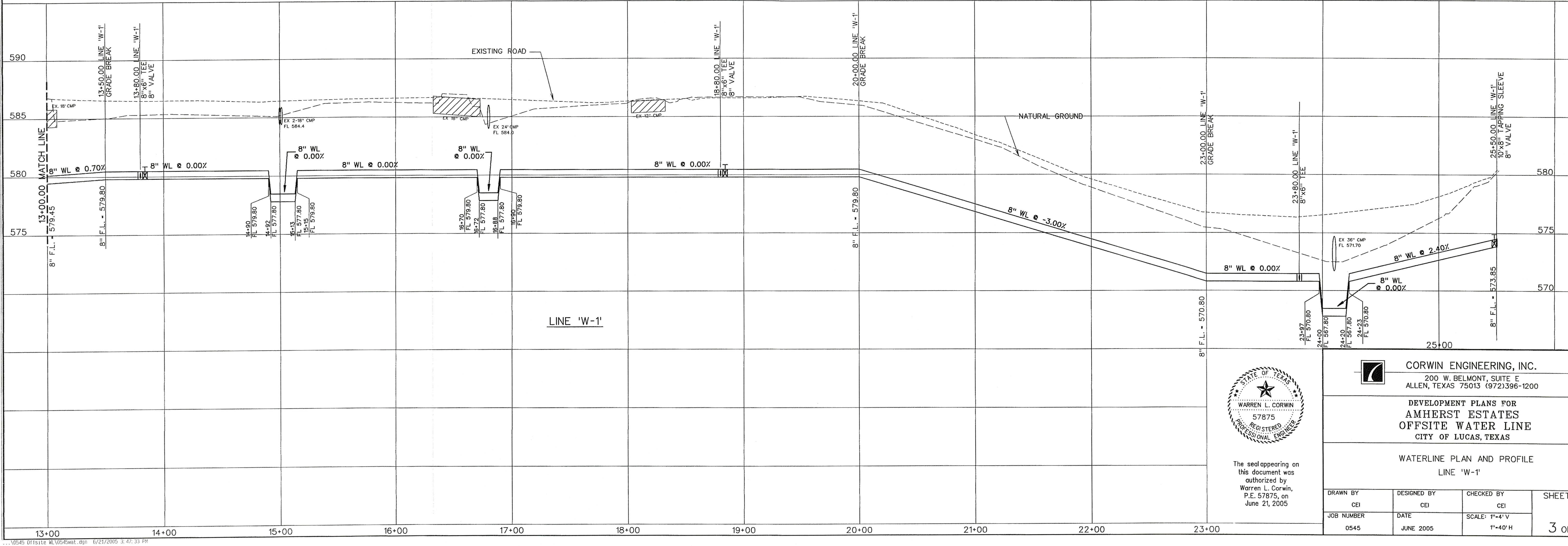
WATERLINE PLAN AND PROFILE
 LINE 'W-1'

DRAWN BY CEI	DESIGNED BY CEI	CHECKED BY CEI	SHEET NO. 2 OF 3
JOB NUMBER 0545	DATE JUNE 2005	SCALE: 1"=41' V 1"=40' H	



NOTE:
 ANY ASPHALT PAVT., GRAVEL DRIVE OR CMP CULVERTS
 THAT ARE REMOVED FOR CONSTRUCTION MUST BE
 REPLACED. DRIVES SHALL REMAIN OPERABLE EACH
 NIGHT.

NOTE:
 EXACT LOCATION OF EXISTING 10" WATERLINE
 IS UNKNOWN.



The seal appearing on
 this document was
 authorized by
 Warren L. Corwin,
 P.E. 57875, on
 June 21, 2005

CORWIN ENGINEERING, INC.
 200 W. BELMONT, SUITE E
 ALLEN, TEXAS 75013 (972)396-1200

DEVELOPMENT PLANS FOR
 AMHERST ESTATES
 OFFSITE WATER LINE
 CITY OF LUCAS, TEXAS

WATERLINE PLAN AND PROFILE
 LINE 'W-1'

DRAWN BY CEI	DESIGNED BY CEI	CHECKED BY CEI	SHEET NO. 3 OF 3
JOB NUMBER 0545	DATE JUNE 2005	SCALE: 1"=4' V 1"=40' H	