

**Corwin Engineering, Inc.**  
 200 W. Belmont Drive, Suite E  
 Allen, Texas 75013  
 972.396.1200  
 Fax 972.396-4987

**TRANSMITTAL LETTER**

Fax	pages	X	Courier	U S Mail	Hand Delivered	Original being mailed
-----	-------	---	---------	----------	----------------	-----------------------

TO City of Lucas  
 151 Country Club Rd  
 Lucas, TX 75002

ATTN Stacy Caudell

FROM Brandon Davidson

RE Amherst Estates

CEI # 0549

DATE December 13, 2007

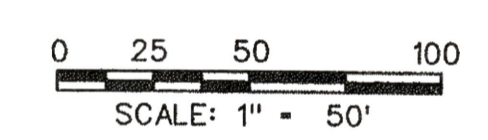
X	For Review	For Your Use	As Requested	Approved
---	------------	--------------	--------------	----------

Items Included With This Transmittal:

7	Revised grading plans

Comments: Stacy, these are the grading plans that show the drainage ditch going in front of the lots on the east side. Would you please stamp these approved for construction. I have provided 7 sets, three of which are for the City of Lucas. Please stamp them, keep what you need and call me when the rest are ready. Thank you.

Engineers • Planners • Surveyors



**NOTES:**

1. Finish Floor Elevation to be 0.70 Feet above Finished Pad.(FP)
2. Additional Erosion Control to be installed in Parkways as determined by the City Inspector.
3. Finished Pad Elevations are within ± 0.3 Feet.



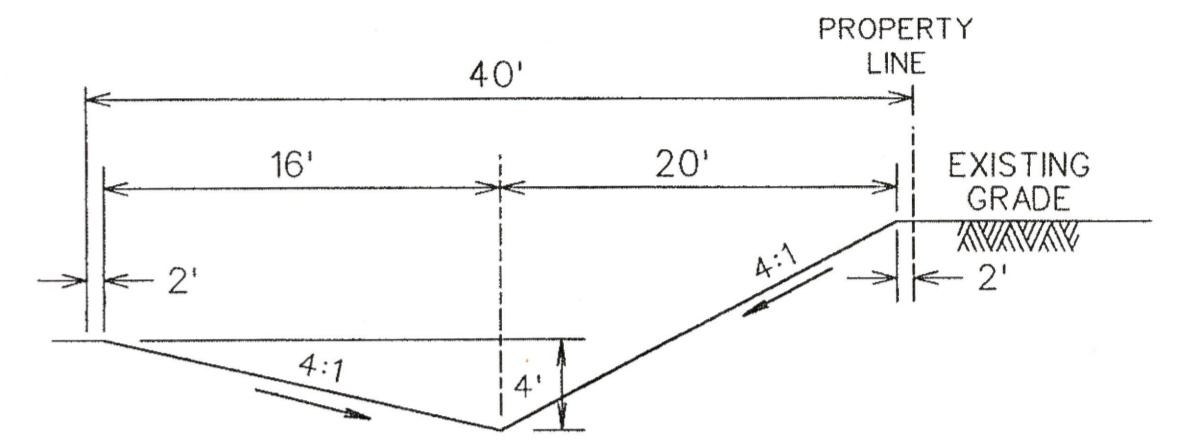
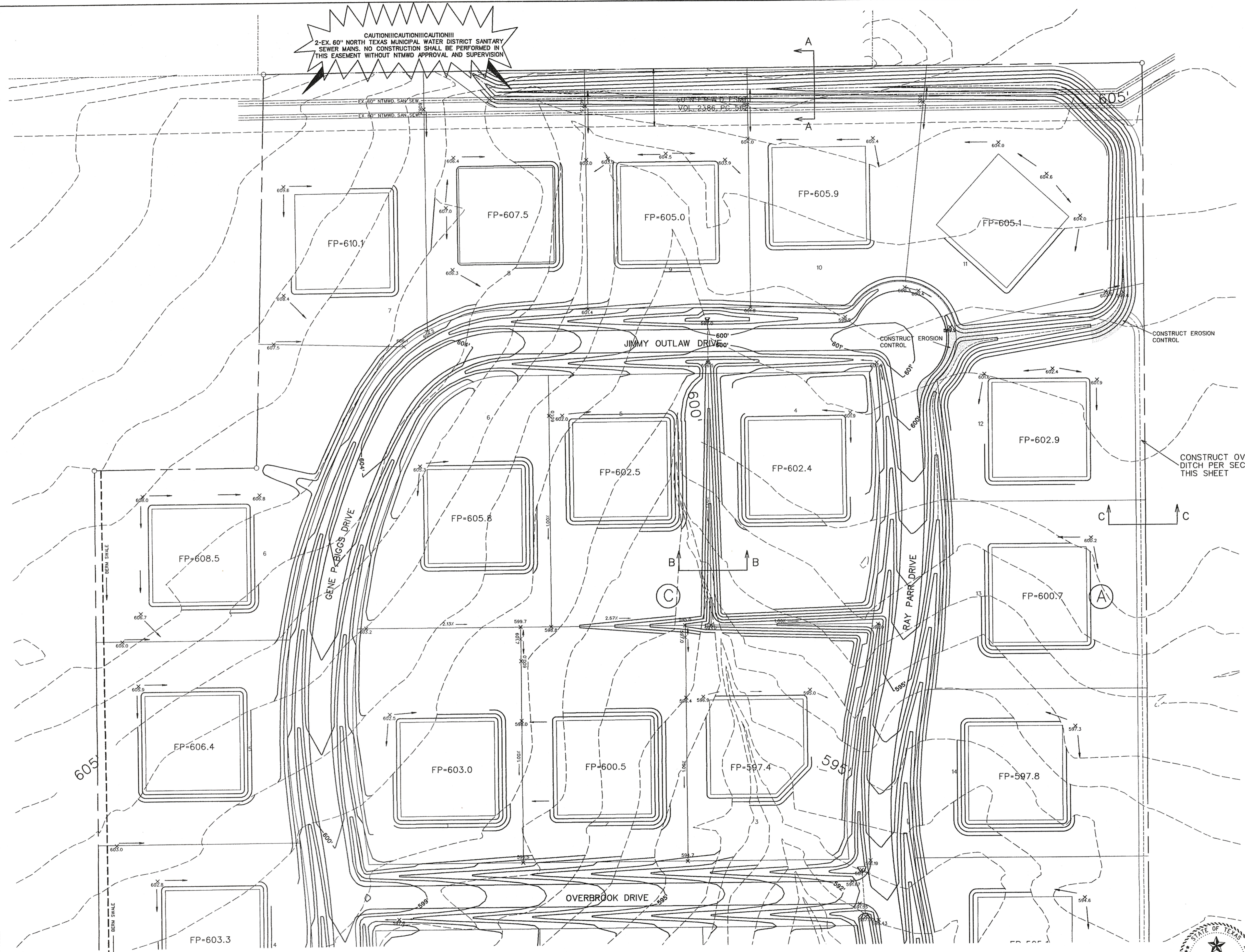
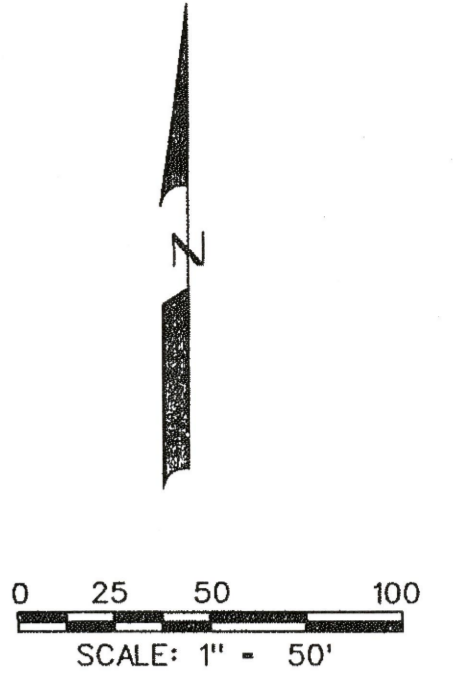
The seal appearing on this document was authorized by Brandon Davidson P.E. 87682, on December 13, 2007

BENCHMARK:  
 SQUARE CUT "1" TOP OF CURB CENTERLINE  
 OF INLET 100' WEST OF FM 1378 ON SOUTH  
 SIDE OF COUNTRY BROOK LANE.  
 ELEV. = 619.06

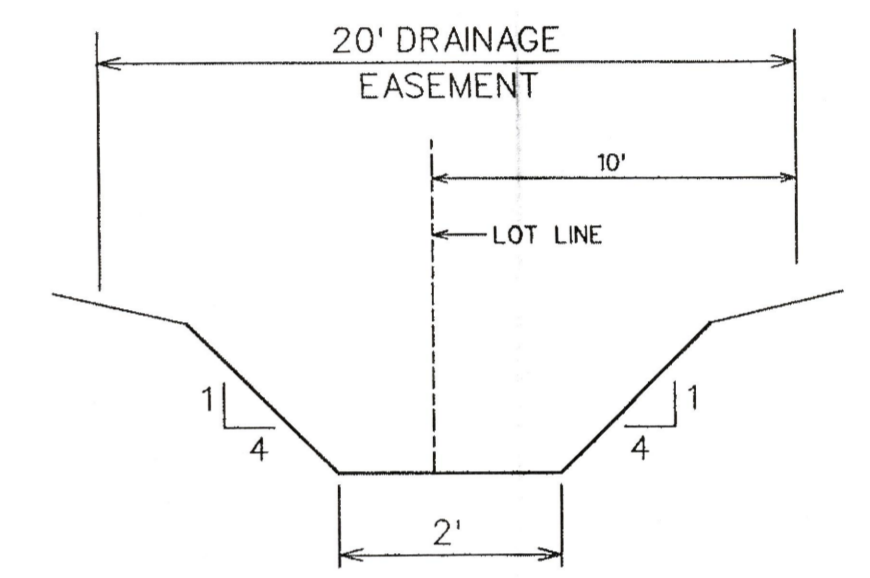
APPROVED  
 CITY ENGINEER DATE  
 STACY CAUDELL 12-13-07

<b>CORWIN ENGINEERING, INC.</b> 200 W. BELMONT, SUITE E ALLEN, TEXAS 75013 (972) 396-1200			
<b>CONSTRUCTION PLANS FOR          AMHERST ESTATES          LUCAS, TEXAS</b>			
<b>GRADING PLAN</b>			
DRAWN BY BDD	DESIGNED BY BDD	CHECKED BY BDD	SHEET NO.
JOB NUMBER 0549	DATE DECEMBER 2007	SCALE: 1"=50'	16 OF 20

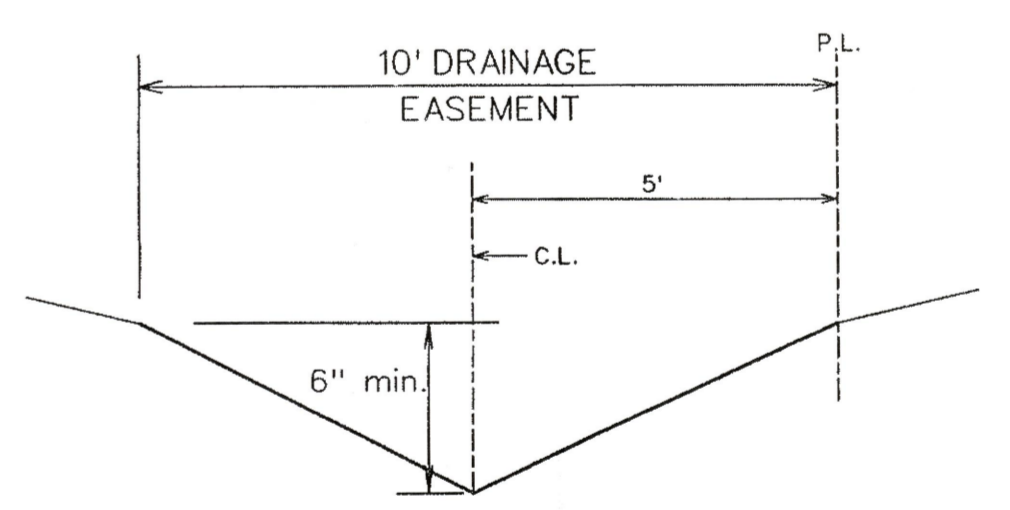
**CAUTION!!!CAUTION!!!CAUTION!!!**  
 2-EX. 60" NORTH TEXAS MUNICIPAL WATER DISTRICT SANITARY SEWER MAINS. NO CONSTRUCTION SHALL BE PERFORMED IN THIS EASEMENT WITHOUT NTMWD APPROVAL AND SUPERVISION



DRAINAGE SWALE - SECTION 'A-A'  
N.T.S.



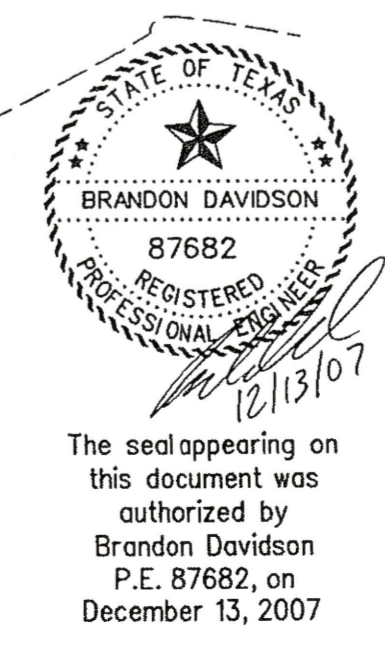
SECTION 'B-B'  
TYPICAL AT EACH LOT LINE



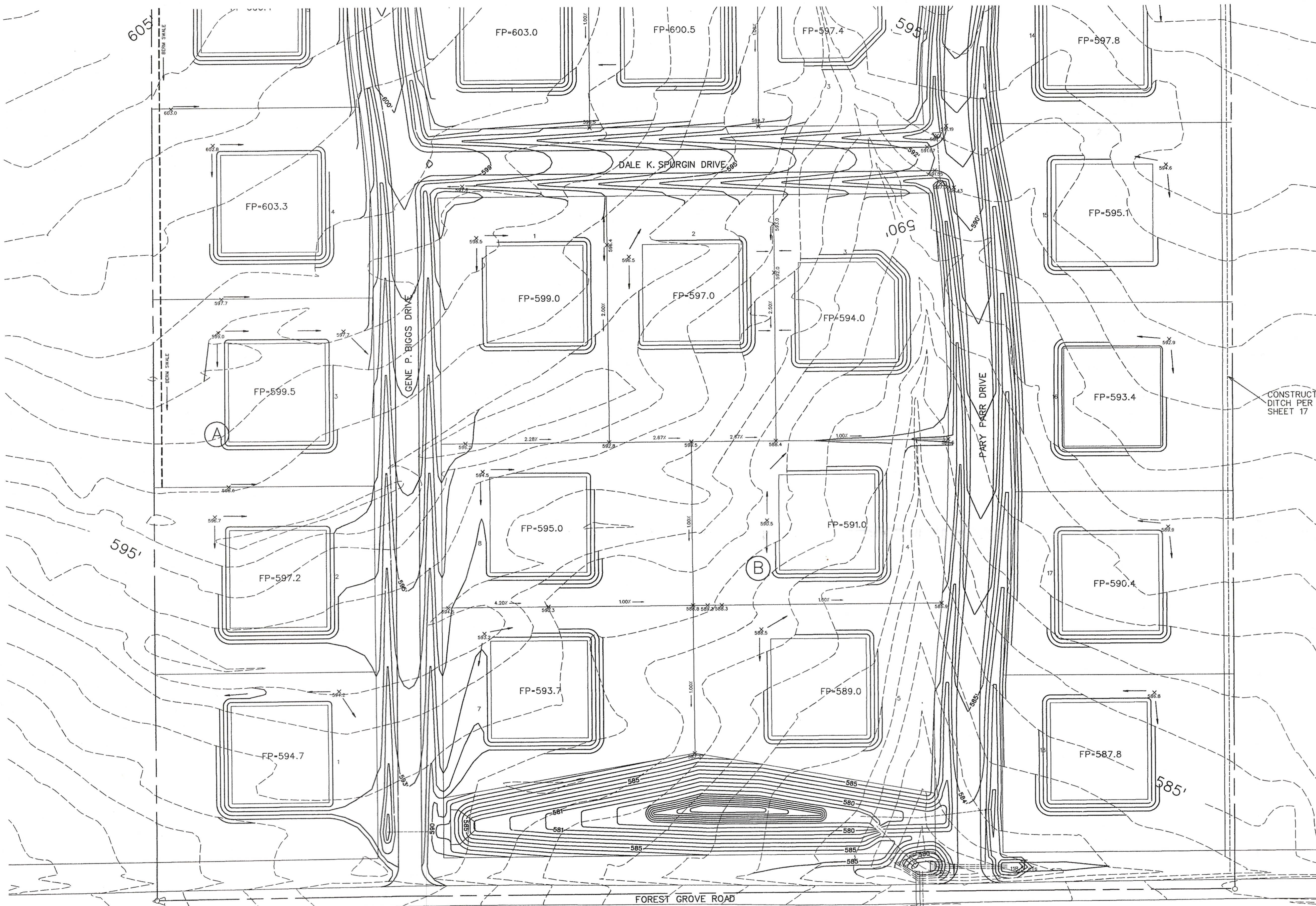
SECTION 'C-C'

BENCHMARK:  
 SQUARE CUT "C" TOP OF CURB CENTERLINE  
 OF INLET 100' WEST OF FM 1378 ON SOUTH  
 SIDE OF COUNTRY BROOK LANE.  
 ELEV. = 619.06

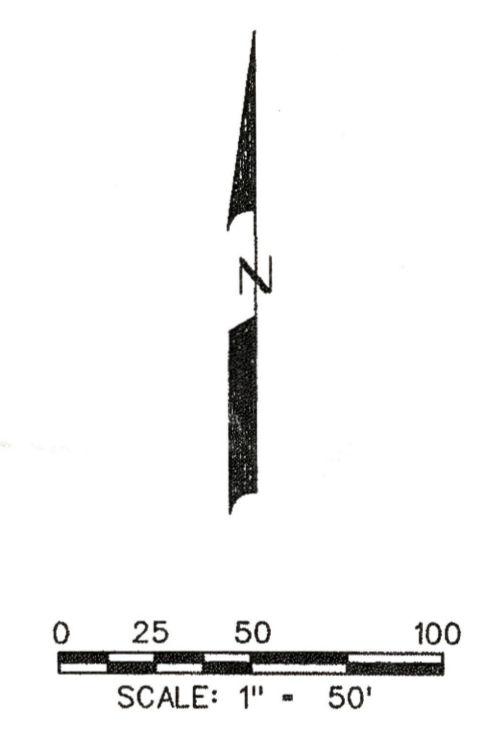
- NOTES:
1. Finish Floor Elevation to be 0.70 Feet above Finished Pad.(FP)
  2. Additional Erosion Control to be installed in Parkways as determined by the City Inspector.
  3. Finished Pad Elevations are within ± 0.3 Feet.



CORWIN ENGINEERING, INC. 200 W. BELMONT, SUITE E ALLEN, TEXAS 75013 (972) 396-1200			
CONSTRUCTION PLANS FOR <b>AMHERST ESTATES</b> LUCAS, TEXAS			
GRADING PLAN			
DRAWN BY BDD	DESIGNED BY BDD	CHECKED BY BDD	SHEET NO. 17 OF 20
JOB NUMBER 0549	DATE DECEMBER 2007	SCALE: 1"=50'	



CONSTRUCT OVERFLOW DITCH PER SECTION C-C SHEET 17



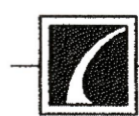
- NOTES:
1. Finish Floor Elevation to be 0.70 Feet above Finished Pad.(FP)
  2. Additional Erosion Control to be installed in Parkways as determined by the City Inspector.
  3. Finished Pad Elevations are within  $\pm 0.3$  Feet.



The seal appearing on this document was authorized by Brandon Davidson P.E. 87682, on December 13, 2007

BENCHMARK:  
SQUARE CUT "□" TOP OF CURB CENTERLINE  
OF INLET 100' WEST OF FM 1378 ON SOUTH  
SIDE OF COUNTRY BROOK LANE.  
ELEV. = 619.06

APPROVED  
CITY ENGINEER DATE  
*Stacy Candel* 12-13-07

 <b>CORWIN ENGINEERING, INC.</b> 200 W. BELMONT, SUITE E ALLEN, TEXAS 75013 (972) 396-1200			
<b>CONSTRUCTION PLANS FOR AMHERST ESTATES LUCAS, TEXAS</b>			
GRADING PLAN			
DRAWN BY BDD	DESIGNED BY BDD	CHECKED BY BDD	SHEET NO.
JOB NUMBER 0549	DATE DECEMBER 2007	SCALE: 1"=50'	16 OF 20