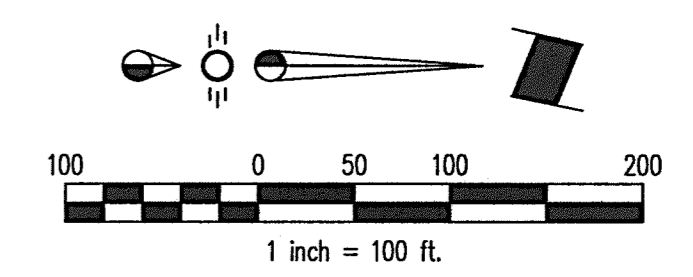
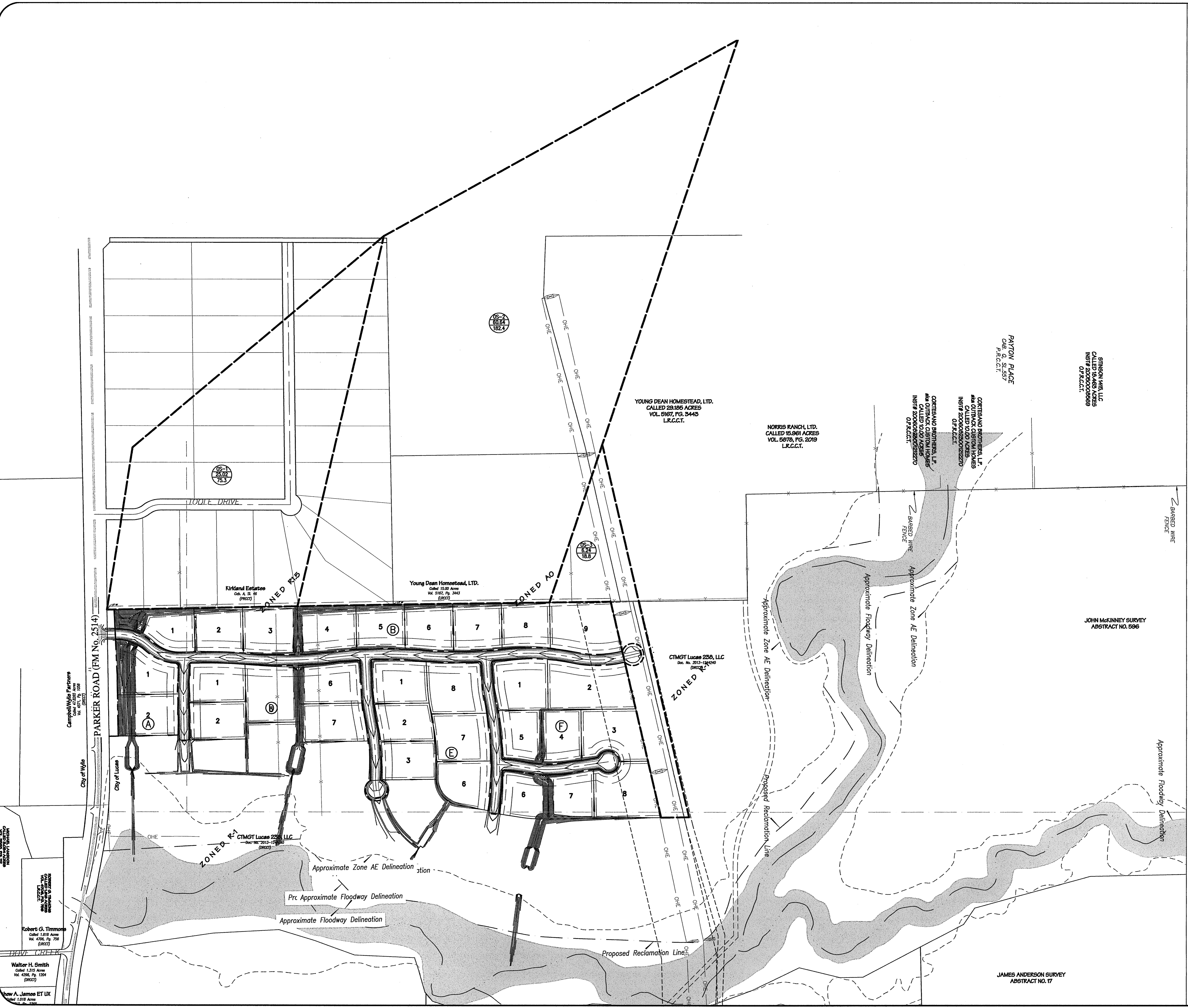


Drawn by: Matthew Dorsett, P.E. 2/20/15, 10:37 AM
 Checked by: Robert G. Thorne, P.E. 2/20/15, 1:08:52 PM
 Date: 2/20/15



- Legend**
- A = Area
 - 1.00 = Acres
 - 1.0 = Q_{100} cfs
 - = Drainage Area Divide
 - - - 710 - - - = Existing Contours
 - - - 709 - - - = Direction Of Flow
 - ⊙ = Inlet Number

Residential
 $C = 0.4$ $I_{100} = 7.52$ $T_c = 15$ min.

CAUTION !!!
EXISTING UTILITIES
 EXISTING UTILITIES AND UNDERGROUND FACILITIES INDICATED ON THESE PLANS HAVE BEEN LOCATED FROM REFERENCE INFORMATION. IT SHALL BE THE RESPONSIBILITY OF THE CONTRACTOR TO VERIFY BOTH HORIZONTALLY AND VERTICALLY THE LOCATION OF ALL EXISTING UTILITIES AND UNDERGROUND FACILITIES PRIOR TO CONSTRUCTION AND TO TAKE NECESSARY PRECAUTIONS IN ORDER TO PROTECT ALL FACILITIES ENCOUNTERED. THE CONTRACTOR SHALL PRESERVE AND PROTECT ALL EXISTING UTILITIES FROM DAMAGE DURING CONSTRUCTION.

BENCHMARKS:
 BM1
 1/2" iron rod found at the southwest corner of the subject tract. Elevation = 554.15
 BM2
 5/8" iron rod found 729.5 feet east of the southwest corner of the subject tract. Elevation = 545.78

Drainage Area Table						
Drainage Basin	Area (Acres) "A"	Runoff Coefficient "C"	Intensity (In./hr.) "I"	Storm Design Frequency (Yr)	Time Conc. (Min.) "T _c "	Discharge (C.F.S.) "Q"
OS-1	25.02	0.4	7.52	100	15	75.3
OS-2	60.64	0.4	7.52	100	15	182.4
OS-3	6.24	0.4	7.52	100	15	18.8

AS-BUILT DRAWINGS
 THIS DRAWING HAS BEEN REVISED TO CONFORM TO THE CONSTRUCTION RECORDS PROVIDED BY THE CONTRACTOR. ALIGNMENT AND GRADES SHOWN ON THIS DRAWING WERE NOT FIELD VERIFIED BY THE ENGINEER.
 Matthew M. Dorsett, P.E. 90912
 DATE 2/20/15

p i a r s
ENGINEERING

765 Custer Road, Suite 100 • Plano, TX 75075 • (972) 422-0077 • TBPE No. F-2121

ENCHANTED CREEK PHASE 1
CITY OF LUCAS
COLLIN COUNTY, TEXAS
OFFSITE DRAINAGE AREA MAP

Issue Dates:	
Date	Revisions

Scale: 1" = 200' XREF
 Drawn By: RCP
 Checked By: MMD
 Sheet **11**
 of **23**
 SEI No. 13-033

