



# ANNUAL REPORT

## Calendar Year 2023

*The* City of Madeira Beach Fire Department is committed to providing high-quality, responsive services that promote the health, welfare, and safety of all who reside, work in, or visit our area of service. Our members, using safe and effective methods, strive to reduce the loss of life and property through emergency medical services, education, fire prevention, marine operations, and suppression.

We shall serve the public with courtesy and respect, holding dedication to duty above personal comfort and convenience, whenever our skills and talents are needed.

**Submitted By**

**Clint Belk, Fire Chief**



The Madeira Beach Fire Department provides an invaluable service to the community. The staff and members are committed to the delivery of emergency service, medical care and treatment, and emergency transport in a professional manner consistent with established standards and applicable guidelines of the industry. Our mission statement, which is under the logo on the cover, provides the guiding principles for the Department and overall direction for our membership.

## **ORGANIZATIONAL VALUES**

While striving for the highest level of care and service to our community, our actions will be guided by the following organizational values that we believe are essential to our mission, both professionally and personally:

- Commitment
- Honesty / Integrity
- Leadership
- Professionalism
- Teamwork
- Responsibility / Accountability
- Customer Care

This is an annual report for the Department, and the initiatives taken by Madeira Beach Fire Department over the past year. This report is not intended to be all-inclusive, but merely a perspective of the organization, the progress made, and the activities in which MBFD has been involved in.

## **ADMINISTRATION**

Responsible for personnel, budget, policies, procedures, procurement, training, correspondence, certifications, and other related necessary functions for the continued operation of the department.

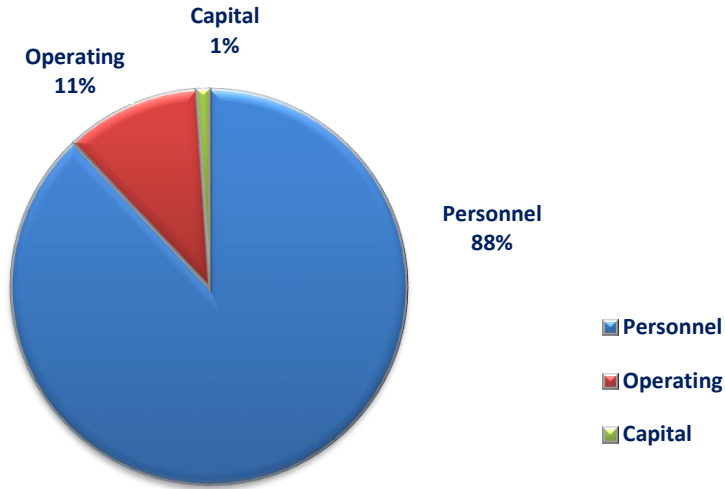
Clint Belk, Fire Chief

Trish Eaton, Executive Assistant to Fire Chief

# DEPARTMENT BUDGET FISCAL YEAR 2023

Total General Budget for 2022/2023: 2,068,569

FY2023 Actual Expenditures: 2,055,116

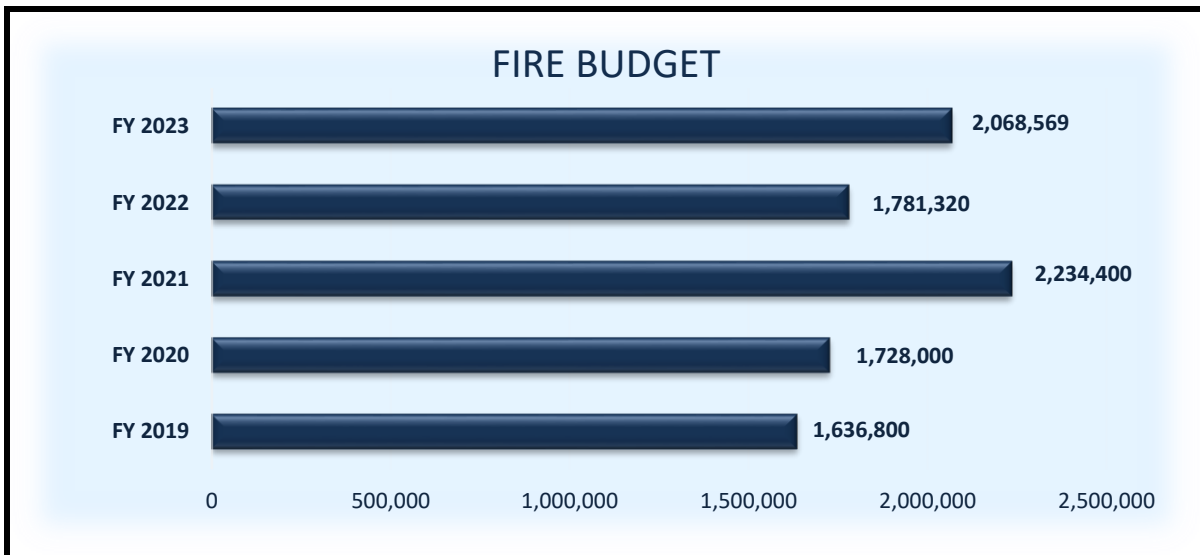


Revenues:	EMS:	\$ 555,911
	Redington Contracts:	\$ 284,708
	Inspection Fees:	\$ 23,700
	Miscellaneous:	\$ 28,520

Total Revenue: \$ 892,840

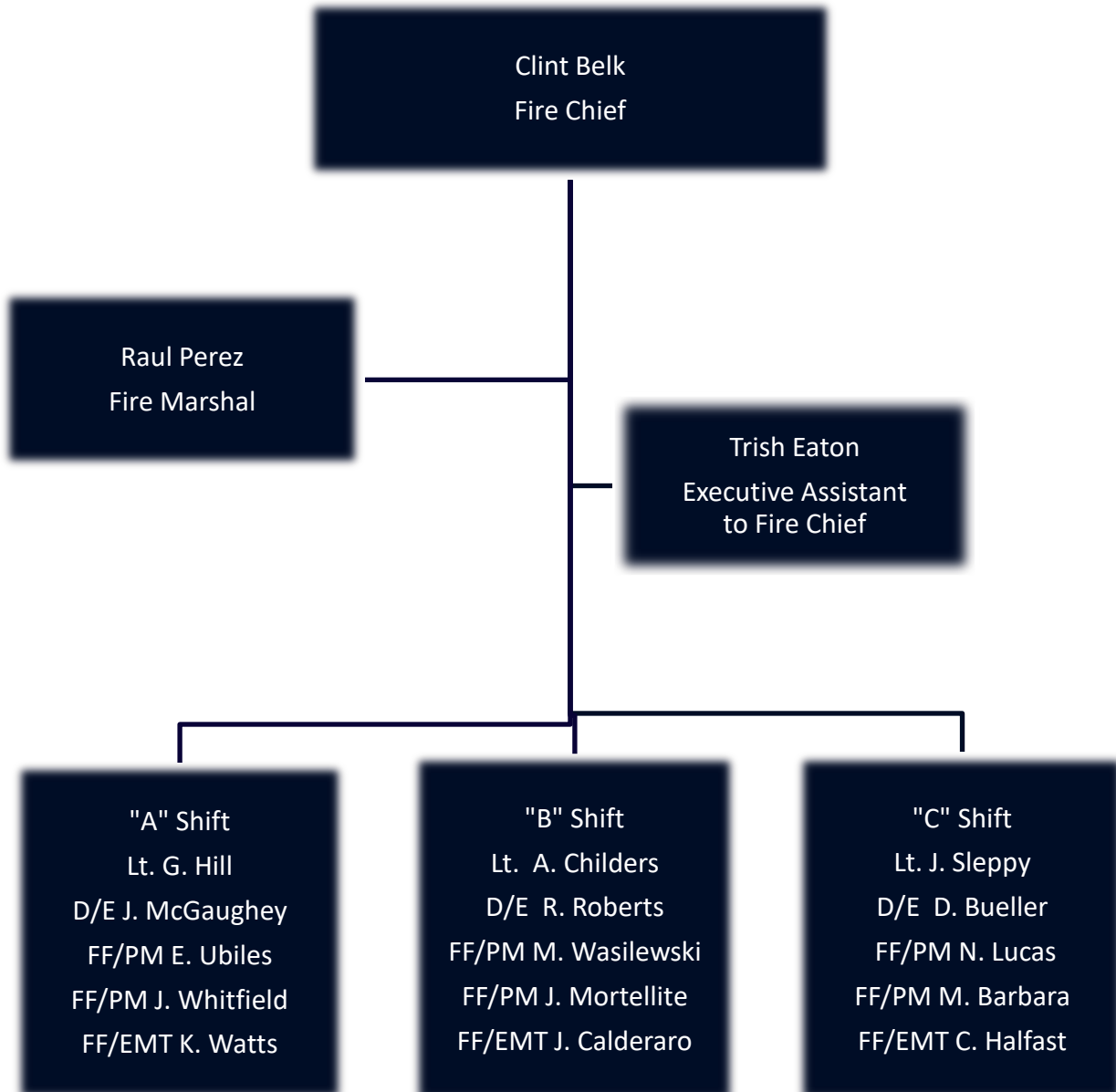
Total Department Expenses minus Revenues: \$ 1,162,276

Total City Budget: \$39,540,995



# OPERATIONS

The primary responsibilities of Madeira Beach Fire Department are fire suppression, advanced life support treatment, marine emergencies, and customer service. The department is a full-paid career agency with the following organizational structure:





**Fire Chief Clint Belk**



**Fire Marshal Raul Perez**



**Lt. Andrew Childers**



**Lt. George Hill**



**Lt. John Sleppy**



**D/E Dominic Bueller**



**D/E Jamie McGaughey**



**D/E Ryan Roberts**



**FF/PM Mario Barbara**



**FF/EMT Joey Calderaro**



**FF/EMT Chase Halfast**



**FF/PM Nick Lucas**



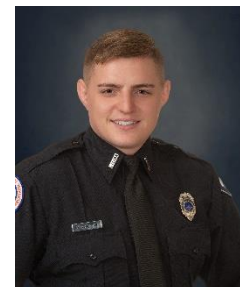
**FF/PM John Mortellite**



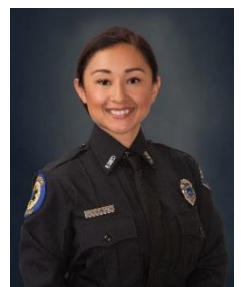
**FF/PM Erick Ubiles**



**FF/PM Mike Wasilewski**



**FF/EMT Kyle Watts**



**FF/PM Johana Whitfield**

# ANNUAL EMERGENCY RESPONSES

**Total Emergency Incidents**                    **1978**  
**Total Emergencies in 2022**                    **1841**

Medical - 1259

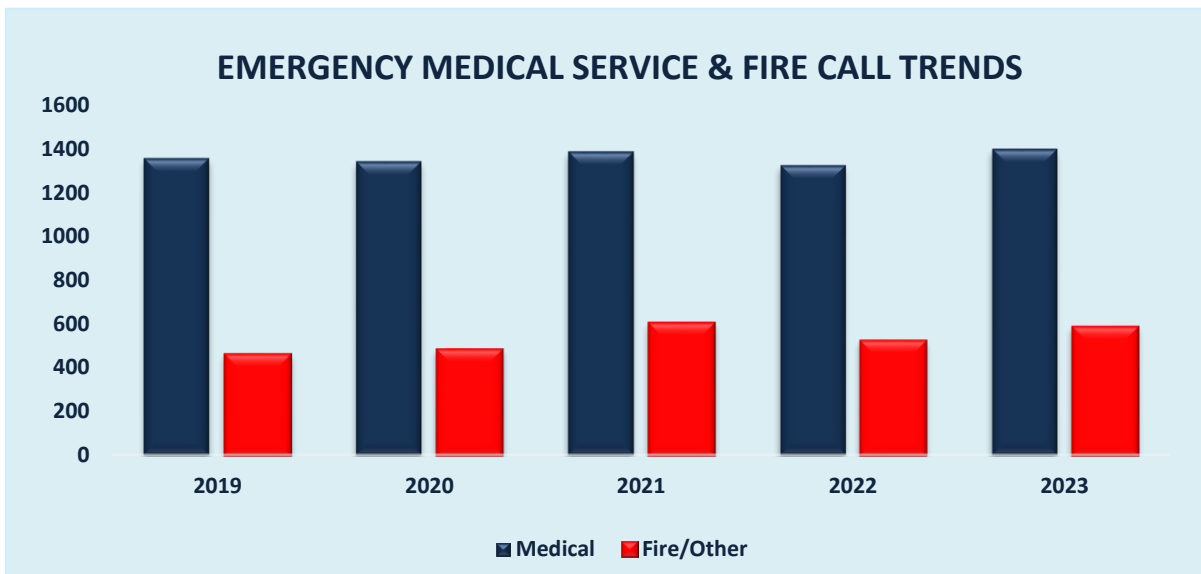
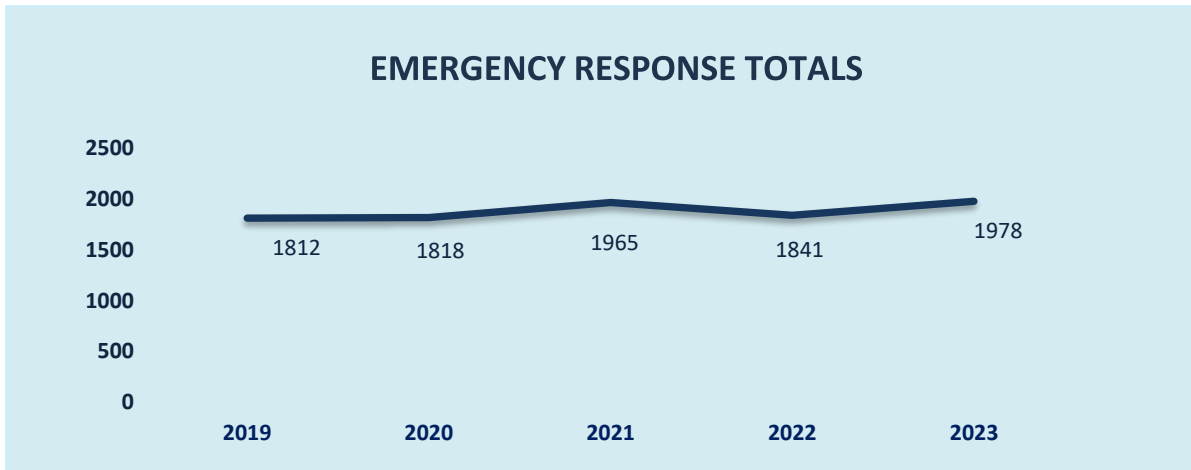
Fire Incident (including automatic alarms) - 510

Structure Fire - 72

Marine/Water Rescue - 102

Trauma Alert - 35

## AVERAGE RESPONSE TIME: 4 MINUTES 27 SECONDS



## TRAINING

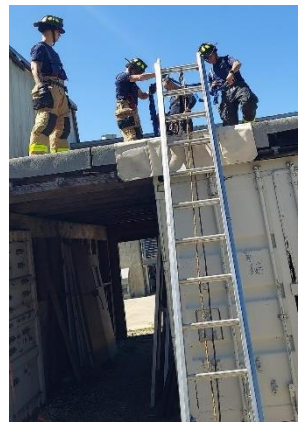
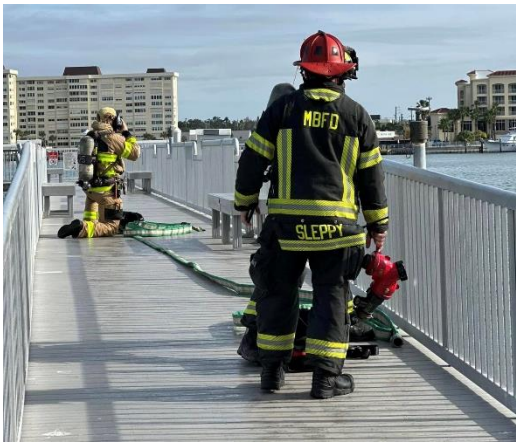
The Madeira Beach Fire Department, in its efforts to provide above standard service to the public, has taken part in the following educational opportunities:

- ✓ Marine 25 Training
- ✓ Continued training with “Rapid Dive” gear for underwater extrications.
- ✓ Annual training refresher on all water rescue apparatus and resources.
- ✓ Lt. Childers continues his duties as Operations Officer and Fitness Coordinator. He participates in County Water Rescue Committee & Water Operations Group and oversees administration of PSTrax. He maintains department’s run cards, SOPs, and other vital operational tasks.
- ✓ Lt. Childers and Lt. McClave continued to take lead roles as mid-County CFE Instructors.
- ✓ Lt. Sleppy assigned as Training Officer in November.
- ✓ Lt. Hill continues as EMS Officer, coordinating Department’s EMS training, and Capstone through Medical Director’s Office for new hire paramedics. EMS Coordinator reviews patient care reports to assure it’s in compliance with Medical Director’s regulations.
- ✓ D/E Bueller and FF Wasilewski attended the Officer Development Seminar
- ✓ Lt. McClave attended the Orlando Fire Conference.
- ✓ Fire Inspector Perez completed AHJ Training with American Fire Sprinkler Association in Land-O-Lakes
- ✓ A shift completed night marine training at Eckard College.
- ✓ Lt. McClave, FF Wasilewski and FF Barbara attended “The Winning Firehouse” seminar in East Lake
- ✓ All shifts completed autism training at Treasure Island City Hall
- ✓ FF Lucas continues to train on pump operations. Completed aerial training in Tampa.
- ✓ FF Ubiles and FF Whitfield became M25 Operators
- ✓ FF Wasilewski attended hydraulics class for his upcoming driver training. Became cleared as Acting Driver Engineer.
- ✓ All crews completed a Night Drill at SPC Fire Training Grounds
- ✓ W.E.T pack training at the Elks Lodge pool.
- ✓ Lt. McClave instructed EVOC at St. Pete College.
- ✓ Lt. Childers and Lt. McClave attended the Active Shooter Drill as observers at Seminole Middle School.
- ✓ Trained at an acquired structure in Madeira Beach.
- ✓ Lt. McClave attended the Fire Conference in Orlando.
- ✓ FF Ubiles completed Instructor I Course.
- ✓ Fire Inspector Perez attended Codes and Standards training in Gulfport.
- ✓ Breathe-down drill at SPC Fire Training College.
- ✓ Propane training completed by all three shifts.
- ✓ All shifts participated in County-wide high-rise training in May.
- ✓ Live Burn at Largo Drill Grounds. Lt. Childers and Lt. McClave lead the fire training.
- ✓ Numerous facilities training at SPC Fire Training College throughout the year.
- ✓ All shifts completed ladder training, VES, pump evolution, high rise fire attack, force entry, and hose line management.
- ✓ Three new hires began four-week Firefighter skills orientation on October 9<sup>th</sup>. One firefighter/paramedic with PC certification and two firefighter/EMTs with scheduled start of paramedic school in January. FF/PM John Mortellite, FF/EMT Chase Halfast, FF/EMT Kyle Watts.
- ✓ Extrication training at LKQ Automotive

### **Nearly 4102 hours have been logged for fire training.**

The following educational facilities and resources have been used for training purposes in 2023:

- ✓ Saint Petersburg College
- ✓ Pinellas County Training Chiefs
- ✓ International Fire Chiefs Association
- ✓ Largo FD Drill Grounds
- ✓ Elks Lodge Pool, Madeira Beach
- ✓ LKQ Automotive
- ✓ Acquired Structures in Madeira Beach
- ✓ Madeira Beach Marina





## PROMOTIONS, AWARDS & RECOGNITION



FF/PM Michael Wasilewski named Firefighter of the Year 2023. He was also recognized by the VFW as Firefighter of the Year.

FF/PM Ubiles recognized by the American Legion, State Chapter as the Southern Region Firefighter of the Year



2023 Distinguished Honorees at the John Moronni First Responder Dinner, Firefighter Team of the Year: Lt. Tom McClave, D/E Bueller, FF/PM Wasilewski were named along with 2 members of Pinellas Suncoast Fire Rescue.

## PUBLIC EDUCATION

The department strives to educate all residents, visitors, and school children in every facet of public safety. Below is a list of programs offered by MBFD in 2023:

- ✓ CPR classes were scheduled throughout 2023.
- ✓ Blood pressure checks at the station for all walk-ins were made available.
- ✓ Life-Jacket Giveaway took place during Kite Day in March and Angler's Armory Kids Fishing Day in August. The program is with Safe Kids Coalition and Pinellas County Fire/EMS.
- ✓ Community Risk Reduction Program includes home fire inspections/assistance with smoke detector installation and battery check/change out, fall risk prevention, special needs list, and more.
- ✓ 2023 Madeira Beach Hurricane Preparedness Expo.
- ✓ Visited Madeira Beach Fundamental School during Fire Prevention Week. Crews did an outside presentation of the fire truck and equipment, while Clover, her FD assigned trainer and Fire Inspector Perez, did a fire safety demonstration and spoke about the importance of being prepared for fire emergencies by having a family escape plan.
- ✓ "School is Back in Session" campaign was conducted during the first three days of school. The 3-day public safety reach-out program reminds drivers to slow down and drive with caution in school zones.
- ✓ Thirteen public education classes were held in 2023; 88 individuals became CPR Certified.
- ✓ The Department gave away over 400 life jackets during various public events.
- ✓ A Shift demonstrated the LUCAS machine to the St. Petersburg General Hospital ER staff.



## OPERATIONS/LOGISTICS

- Sale of 2004 Pierce Engine to the Middlesex Volunteer Fire Department, NC.
- SR25; per vehicle replacement plan an upgraded Special Rescue 25 unit was placed in service. The Polaris Ranger 1000 Crew provides more room for patient treatment while in transport and to store necessary medical equipment.
- Utility 25 has been added to the fleet – 2014 Ford Explorer (originally Fire Chief’s vehicle and moved to be the fire inspector vehicle). This unit allows MBFD staff to utilize the vehicle to attend department related meetings, education, and to complete department related errands.
- Medic 25 vehicle obtained in October; lettering and outfitting began to prepare for in service date early 2024.
- Successful completion of State ALS License Renewal.
- Renewal of certifications of all MBFD members; CPR, State Medic/EMT.
- Promotional Assessment Testing held.
- Promotion of John Sleppy to Lieutenant.
- Three additional firefighter positions added effective October 2023.
- Engineering firm was retained for construction of a parking pad for the west side of the station.



## ANNUAL TESTING, MAINTENANCE & CERTIFICATION:

- Annual Physicals
- Self-Contained Breathing Apparatus (SCBA)
- Automated External Defibrillators (AED)
- Bunker Gear and Uniform Evaluations (Semi-Annual)
- Pump tests conducted on T25, T125
- Mask fit testing (Medical N95 & SCBA)
- Extrication tools
- Extinguishers at all City’s properties and vehicles that carry extinguishers
- Hood System/Sprinkler Test
- Sprinkler Test at Station 25, City Hall and Building Department
- Nozzle Flow Tests
- Fire Alarm
- Aerial Ladder and Ground Ladders Testing
- Saw Maintenance
- Fire Hose Tests
- Hydrants
- Semi-annual breathing air compressor service and quarterly air-quality tests conducted

## COMMUNITY EVENTS AND PROJECTS

- MBFD assigned Special Rescue at the John's Pass Seafood Festival and King of the Beach.
- 9-11 Day of Remembrance Ceremony coordinated at the 9/11 Memorial sites in Madeira Beach and Redington Beach.
- MBFD's Legends Never Die 5K held at Archibald Beach. Over 250 runners participated in the event, raising \$6700 for the Franciscan Center's Retreat and Restore designed to assist local fire and law enforcement personnel after traumatic events or PTSD. In addition to the funds raised, various donations were made on behalf of the Legends Never Die 5K with a total of nearly \$14,000 in donations. This was the 3<sup>rd</sup> year of the race, growing from 75 participants to nearly 300 registered runners in 2023. Race coordinated by Executive Assistant to Fire Chief, T. Eaton.
- MBFD hosted the USA Patriots Amputee Team, playing a charity game. Chief Belk, Lt. McClave, FF Wasilewski, and FF Barbara and FF Ubiles played on the Hose & Bros Team. The team also included our City Manager, Gomez and members of the Sons of the Legion and local businesses. The Department donated all the profits from the 2022 Legends Never Die 5K to the USA Patriots summer camp for kids. Executive Assistant T. Eaton coordinated the event.
- Breast Cancer T Shirt Fundraiser completed. Donation to Ladies First Choice Boutique was made in the amount of \$350.
- Participated in the Spring and Fall Festivals at Madeira Beach Fundamental.
- Department Staff participated in the Great American Teach-in at Madeira Beach Fundamental as well as Firefighters prepared presentations at the schools of their children.
- Lt. McClave, FF Sleppy and FF Lucas assisted local resident with the height of her bed to decrease fall risk.
- Breast Cancer Fundraiser took place throughout October with the sale of T shirts at both the station and Ladies First Choice boutique. Proceeds will be donated to the store for patients who are unable to cover the cost of the necessary items during or after their breast cancer treatment.
- Honorary Chief pinning ceremony of Beans. A special needs pup of Team Denali with a "bucket list".



# SIGNIFICANT RESPONSES

## Structure Fires/Property Fires

- Truck 25 was dispatched for reports of a fire. Upon arrival T25 found a single-story commercial block constructed structure with moderate smoke conditions on sides A, B, and D. T25 takes command and accountability on side alpha and goes to investigate. The owners of the restaurant were on scene and opened the doors for FD personnel. Once inside a small fire is found on the grill. Gas is secured outside of the structure by Seminole units. Charged attack line was staged inside the building and water supply is established by T25. Fire is extinguished using a CO2 extinguisher. PPV is then used to clear the building of smoke. Scene is left with restaurant owners.
- In the early morning hours T25 was dispatched to wires down and side of house on fire. The fire was out on arrival and delayed being able to clear call due to extended ETA for Duke Energy and power lines on ground that were live. T25-C came out and relieved T25-B on scene. T25 upgraded call to structure fire and started overhauling and salvaging the garage area where smoldering insulation was found. Possibly due to wire shorting.
- T25 dispatched to structure fire, found fire and smoldering insulation above the kitchen area. Possibly to additional wire shorting. T25 extinguished and overhauled the area.
- T25 was dispatched to a structure fire. Upon arrival T25 found the Alligator Attraction on fire. T25 quickly went into the offensive mode and went interior to extinguish the fire. Due to a significant amount of fire in the attic, T25 was brought out by command and T25 went into the defensive mode with the aerial. T25, along with all units on scene, was able to have the fire under control within 30 minutes. Once the fire was extinguished, T25 assisted with investigation. Scene left with PCSO and State Fire Marshal.
- T25 was dispatched on the first alarm for a structure fire. Dispatch advised all units that multiple calls had been received and smoke and flames were showing. Station 29 units advised of a visible column of smoke shortly after leaving their station and activated the working fire file prior to arriving on scene. Station 29 units arrived first on scene and reported heavy smoke and flames showing from the bravo side of a one-story single family residential structure. D29 established command and E/T/S29 went into offensive mode pulling an 1 ¾ attack line, making entry through the alpha side. The bulk of the fire was located in the attic on the bravo side. Once the fire on the exterior was extinguished, T25 began pulling soffit of alpha and bravo sides to check for fire extension. All hotspots found were extinguished, positive pressure ventilation was initiated, and all units transitioned to overhaul mode.
- Truck 25 responded with other first alarm units for a structure fire. Dispatch advised all units enroute that multiple calls had been received for a vehicle on fire in the John's Pass parking garage. Station 24 units arrived first on scene and reported nothing showing from a multi-story parking garage. TI200 established command and E24 went into invest mode. T25 arrived as the next suppression unit on scene and split our crew in half, with 2 assisting with establishing a water supply and 2 assisting E24's investigation. Invest quickly found heavy smoke on the ground floor of the garage and located one parked vehicle with active fire in the engine compartment between the first and second floors with one sprinkler head activated. All units transitioned into offensive mode, with E24 stretching an 1 3/4" attack line and T25 gaining access to the vehicle's passenger and engine compartments. The next arriving units were used to evacuate the building and establish RIT. Once the water supply was established, the 2 exterior FF's from T25 proceeded into the structure and linked up with the rest of T25. The fire was successfully knocked down and the search of the interior of the vehicle was negative for any victims. No fire extension was found beyond the vehicle of origin. Building maintenance was able to stop the fire pump and use the buildings HVAC system in conjunction with natural ventilation to begin clearing the smoke. All units that had been operating in the IDLH were sent to rehab and replaced with fresh crews who completed overhaul and ventilation. A wedge was used to stop the residual flow of water from the sprinkler and a dike was built out of kitty litter to control a small amount of fuel leaking from the vehicle. Command was eventually terminated by TI200 and the scene was left with T25 until the fire inspector and alarm company tech arrived on scene. T25 returned available after completing decon of personnel and equipment. The vehicle of origin was a total loss, however, the structure itself suffered no notable damage. The owners of the vehicle and the building were working with the insurance company to have the vehicle removed from the structure at the time T25 left the scene.



- T25 responded on the first alarm for a structure fire in Seminole. Dispatch advised units enroute that multiple calls had been received. Station 29 units arrived first on scene and reported heavy smoke from the eaves on all sides of a one-story single family residential structure. D29 assumed command and the first-due units began operating in the offensive mode, discovering a working fire in the attic space. T25 arrived next on scene and was tasked with establishing a water supply from the closest hydrant to T29 and then another supply line from T29 to E29. Once the water supply was established T25 was reassigned to check conditions on the roof. Ground ladders were thrown on the B and D sides of the structure. Once on the roof, T25 was able to locate the fire area using the TIC and advised interior crews of the exact location, which extended approximately 25' into the attic from the A-side exterior wall. Interior crews were able to gain access to the attic and get a good knockdown on the fire, eliminating any need to open the roof from the topside. Once the fire was knocked down PPV was initiated, and the situation was declared under control.

- Truck 25 was dispatched on the first alarm for a structure fire. Dispatch advised units enroute that multiple calls had been received for a house fully engulfed in fire. TI200 advised that he had a large column of smoke visible from the station and requested a 2<sup>nd</sup> alarm prior to arriving on scene. TI200 arrived on scene first, advised of a fully engulfed 2 story wood frame residential structure with multiple exposure issues and established command. E24 arrived as the first suppression unit on scene and was directed to attack the main body of fire with their deck gun and a 2 ½ hose line. T23 arrived second and was directed by command to a large parking lot on the charlie side. T20 arrived next on scene and established a water supply to E24, which had run out of tank water after blitzing the fire from the alpha side with their deck gun. T25 was tasked by command prior to arrival to approach the scene via the parking lot on the charlie side and handle the delta exposure, which was a one-story wood frame single family residential that was now also on fire. T25 was able to back-in to the parking lot and position the apparatus on the c/d corner of the main fire structure. L25 assessed the situation on the charlie side and found heavy fire on the bravo side of the D1 exposure, active power lines down between the D1 exposure and the main fully engulfed structure, and fire from the main structure being to extend to a 5-story concrete block condominium directly behind it.



T25 pulled a 2 ½ attack line and was able to get a good knock down with tank water on the D1 exposure. A second 2 ½ attack line was pulled by T23 and was used to knock as much as the fire down on the C side of the main structure as possible, which prevented the fire from spreading to the condo. Lieutenant 25 was then assigned to the charlie division supervisor with T25, T23, R20, S22 and T29 operating as that group. Both T25 and T23 ran out of tank water quickly and T25 was eventually supplied by E9 from a second hydrant. R20 was able to perform a primary search of the D1 exposure which turned up negative. Once the water supply to T25 was established, an exterior attack from the C side was resumed, in conjunction with efforts from units on the A side, using a 2 ½ and 1 ¾ line from T25, achieving a solid knockdown on the main body of fire. Units then were sent to rehab and the incident transitioned into overhaul mode. T25's aerial master stream was put in service to completely extinguish the remaining hot spot in the main fire

structure which was a condo behind the main structure was limited to broken windows, minor smoke damage and blistering from the heat on the charlie side of the structure. Multiple other surrounding structures after overhaul was complete. T25 completed personnel and equipment docon at the station prior to return in service.

- T25 responded with Seminole units to a structure fire, vehicle into building and vehicle on fire. T25 established water supply than assisted operations in front of structure with ground ladders to roof. One patient was treated by S29 for minor injuries, driver appeared intoxicated.





## Motor Vehicle Collision (MVC)

- T25 was dispatched for a motor vehicle collision at the base of John's Pass bridge. Upon arrival, the crew found a motorcyclist down in the roadway. Heavy damage to the motorcycle and moderate damage to the vehicle involved. Trauma alert is called on the motorcyclist for being ejected from bike. The patient was transported to Bayfront Medical Center with 1 FD rider.
- T25 dispatched to MVC. Upon arrival T25 found approximately 20 yr old male on the ground second to a scooter accident. T25 quickly examined the patient and activated a trauma alert due to the injuries sustained from the accident. T25 packed the patient and assisted Sunstar enroute emergency to Bayfront ER. Patient care and report given to ER doctor without incident.
- T25 dispatched to a motor vehicle crash. Upon arrival T25 found a 30 yr old male patient laying on the ground second to a motorcycle accident. Witnesses related the patient was ejected from the motorcycle at a high rate of speed. The patient was quickly examined and found to be a trauma alert. Patient was quickly packaged for transport. Two MBSFD riders accompanied Sunstar with transport of patient to Bayfront Medical Center.
- Truck 25 dispatched to vehicle vs. bicycle. Enroute notes were updated to bicycle vs bicycle where patient was turning blue and not breathing. Upon arrival, T25 found one female down in the roadway with PCSO deputy near the patient. The patient and her husband collided bikes while riding, patient was wearing a helmet. The patient was awake, breathing but not alert. Trauma alert was declared. The patient was transported to Bayfront with 2 MBSFD riders. ALS interventions placed and patient began to level off, and consciousness improved throughout transport. Patient care was transferred to Bayfront staff without incident.
- T25 and E26 responded to a motor vehicle crash. Upon arrival, units found 1 patient in the roadway after his motorcycle was involved in a collision with another vehicle. T25 established command and dealt with hazards while E26 assumed medical. Assessment quickly revealed the patient to be a Trauma Alert. The patient was immobilized immediately and E26 rode in to Bayfront Trauma Center with Sunstar providing care enroute.
- T25, T29 and D29 responded for a MVC at Tom Stuart Cswy and Duhme Rd. Upon arrival, units found 1 patient in the roadway after his motorcycle was involved in a collision. D29 established command, T29 dealt with hazards and T25 assumed medical. Assessment quickly revealed the patient to be a Trauma Alert. The patient was immobilized immediately and T25 rode in to Bayfront Trauma Center with Sunstar providing enroute care.

## Water Rescue

- M25 dispatched to water rescue. Upon arrival M25 found the reporting party stranded on a boat relating her husband and friend is missing after looking for some shells near an island. M25 along with M31, PCSO Eagle and Eckard college searched the area. PCSO Eagle spotted the 2-patient stranded around an island in distress and unable to get back to boat due to marine conditions. M25 along with M31 were able were able to get both patients back to safety without incident.
- Marine 25 responded with other first alarm units for a water rescue. Multiple PD vessels were ready in the area due to the holiday weekend. The vessels arrived first on scene. PCSO marine made patient contact and advised that they were applying a tourniquet to a female with major injuries to her lower extremities from a boat propeller. TIPD marine picked up R24's personnel from a nearby dock and ferried them to the PCSO boat where the patient had now been moved to. R24 advised of a trauma alert and the patient was taken to the nearby dock where R24 had been picked up.
- M25 responded with other first alarm units for a water rescue. Multiple PD vessels were ready in the area due to the holiday weekend. The vessels arrived first on scene. PCSO marine made patient contact and advised that they were applying a tourniquet to a female with major injuries to her lower extremities from a boat propeller. TIPD marine picked up R24's personnel from a nearby dock and ferried them to the PCSO boat where the patient had now been moved to. R24 advised of a trauma alert and the patient was taken to the nearby dock where R24 had been picked up.
- M25 was dispatched to an aircraft emergency. Upon arrival M25 found powered paraglider that crashed into the Gulf. They were in serious medical condition. Trauma alert was called. T25 sent a rescue swimmer into the water to help with packaging. Patient brought onto M25 by stokes basket due to possible spinal cord injury. The patient was brought to Crabby's dock for transfer to R24 and Sunstar to continue medical care.

- Crews were dispatched to a water rescue. Upon arrival, M25 began to search the area and quickly saw 2 victims in the water in separate areas. Marine 25 went to the most critical patient first and proceeded to the second patient which was being assisted by PCSO. Once M25 successfully had both patients on board, the crew transferred patients to Dons Dock for E24 to render medical care.
- Drowning/Cardiac Arrest; T25 was dispatched for drowning. Upon arrival, an elderly female was found pulseless and apneic on the poll deck after being removed from the water by bystanders. CPR and ALS treatment were initiated immediately. Return of Spontaneous Circulation (ROSC) was obtained on the scene and the patient was transported to St. Pete General in critical condition.

## Other

- T25 was dispatched for possible suicide. While responding dispatch advised T25 of scene safety issues, to wait for PCSO and noting subject armed with knife. T25 staged away from the location as Deputies clear the scene, T25 crew moves in. Once at the patient's side a large laceration to the left brachial artery is discovered. A tourniquet and combat rolled gauze is applied to control the bleeding. Trauma alert is called and patient was transported to Bayfront Medical Center with 1 FD rider.
- Truck 25 responded for an unconscious person. Upon arrival, initial assessment revealed that the patient met Trauma Alert criteria after falling from a dock onto a concrete wall and having an altered mental status. Patient was immobilized and transported to Bayfront Trauma Center.
- T25 dispatched to falls. Upon arrival, the patient was found unresponsive. Patient fell backwards into the wall and was stuck in the drywall in cardiac arrest. The crew removed the patient from wall and began CPR. The patient as shocked total of 5 times utilizing vector changes before gaining ROSC on scene. Patient was transported to Northside hospital in critical condition.
- T25 responded at PCSO request to evaluate an intoxicated person. Upon arrival, crew found a young male that was detained by PCSO for possible car burglary. The patient was not ETOH but under the influence of an unknown type of drug(s). T25 crew-initiated ALS treatment and rode into Palms of Pasadena Hospital assisting Sunstar. Patient transferred to ER staff in stable condition.
- T25 dispatched for unconscious person on beach, bystanders said patient was walking away. Truck 25 found patient at Gulf Blvd and 154<sup>th</sup> Ave. The patient was extremely aggravated and possibly intoxicated. The patient was secured by PCSO then restrained to a stretcher. The patient had to be medically sedated to enable safe transport. Patient was transported to St. Anthony's Hospital with 2 MBFD medics.
- Truck 25 dispatched to poisoning, T25 for a 13-year-old that took sodium nitrate. Patient was in critical condition. T25 did hazmat consult and began emergency transport to LMC. Patient went into cardiac arrest during transport, cardiac arrest was worked and patient brought to LMC. LMC staff and hazmat medic assisted. Patient was worked for approximately an hour then pronounced dead.
- T25 had a walk up in to the station, patient stated he had weakness and possible pulmonary embolism. Patient was a 29 yr. old male. The patient had a significant medical and drug use history. Pt. had a high heart rate and general weakness. ALS procedures in place, patient transported to Largo Medical Center with 1 FD rider. The patient began seizing during transport and was treated to stop the seizures.
- T25 was dispatched for unknown problem near Madeira Beach Rec Center, after investigating, it was determined that a male was injured on one of the sail boats anchored in the waterways near the Rec Center. Marine 25 was placed on the call and Truck 25 crew manned the boat. The vessel was located, on board were 3 males; one had a large wound to upper left thigh that was bleeding. Patient stated he fell, the wound appeared to be caused by some type of a large, sharp object however, the patient denied such incident. He was also extremely uncooperative and intoxicated. The wound needed a tourniquet to stop the bleeding as well as an emergency trauma bandage. The second patient on the boat had an approximately 2-inch avulsion to the right knee but refused to come off the boat to be evaluated. The first patient was finally removed from the boat and transported to a floating dock located near the Rec Center's Splash Pad. The patient was placed on a stretcher and FF/PM Barbara and D/E Bueller accompanied the patient to Bayfront Medical Center as Trauma Alert. Enroute, the patient became combative and needed to be restrained and medicated for crew's safety. M25 was deconned and flushed. PCSO requested M25 to take the deputies to the boat to make sure no one needed assistance. Lt McClave operated M25, to drive the deputies over to the boat where the incident occurred. FF/PM Wasilewski drove T25 to Bayfront to pick up the crew that rode in with patient. Contact was made with two males on the boat, refusing to leave and stating to the Deputies that everything was ok. M25 returned to the dock with PCSO Deputies.



- Crews were dispatched for a stroke. Upon arrival T25 found a 40 yr old male with a chief complaint of speech abnormalities. T25 quickly examined the patient and deemed them to be a stroke alert. The patient was quickly packaged and brought to Northside ER. T25 assisted with patient care enroute to the hospital.
- Hurricane Idalia Operations; unusual volume of calls for service
- Crews were dispatched to cardiac arrest; T25 responded with E26 and D27. T25 arrived first on scene and found the patient pulseless and apneic on the bedroom floor. CPR and ALS treatment was initiated immediately, and crews worked for over 40 minutes on scene until receiving OLMC direction to continue resuscitation efforts and transport to the closest facility due to the patient being in their 30's. T25 and Sunstar transported the patient to Largo Medical Center, where the patient was pronounced dead.
- T25 responded for an overdose. Initial assessment confirmed the patient to be suffering from an apparent overdose and treatment was initiated immediately. T25 and Sunstar transported the patient to St. Petersburg General Hospital.
- T25 and multiple other units were dispatched for gas leak. T25 found 2" line cut by a fence company. T25 stretched exposure line and the area was evacuated. TECO arrived and located the gas line, dug hole through asphalt (T25 assisted crew digging hole), once located the line was clamped and leak was secured.
- Truck 25 responded to seizures, upon arrival crews found a postictal 2-yr old patient. During assessment the patient began to seize again, and treatment was initiated immediately. T25 personnel accompanied Sunstar during transport to All Children's Hospital due to patient condition, care was transferred to ER staff.
- Truck 25 was dispatched to a high angle rescue. Upon arrival, crews assisted setting up a high angle rescue with T29 ladder truck. T25/T29 set up a high point and was able to assist the medical patient down to the ground by a stokes basket. S29 handled patient care.

## **HURRICANE IDALIA AUGUST 29 – 30, 2023**

All personnel was recalled to prepare all equipment for emergency operations and man the units placed in service to provide coverage for Madeira Beach and the Redington Communities

Units in Service: T25, T125, Brush 25 utilized as a high-water vehicle for evacuations, Utility 25 as Quick Response

Total Calls - 39

Medical -8

Fire Incidents (including fire alarms and evacuations) – 26

Structure Fire - 5

### Structure Fire Incident

Truck 25 was dispatched to a structure fire. Upon arrival, T25 was unable to access the address location due to flood water. T125 then went to the next street where the crew was able to come closer to the fire but flood waters from the hurricane still impeded rapid deployment of a fire attack. T25 then assisted T125 with water supply. T25 had extreme difficulty with water supply due to the hydrant being under water and the current of flood waters that was pulling the hose away. After obtaining a water supply T25 then assisted with a courtyard lay. Once the courtyard lay was set up T25 and T125 began to fight the fire in a defensive operation. MBFD units along with Seminole were able to prevent the spread of the fire to neighboring houses. The fire was partially extinguished as all units were pulled from the fire due to worsening conditions. T125 finished putting the fire out the following day when conditions were safer, and water began to recede back to the Gulf of Mexico.

## LIFE SAFETY SECTION

Inspections 410 (including acceptance tests)

Plan Reviews 32

### MUTUAL AID GIVEN

P. SUNCOAST	SEMINOLE	ST. PETE BEACH	ST. PETERSBURG	LEALMAN	S. PASADENA	TREASURE ISLAND
8	93	2	3	6	2	27
						<b>TOTAL 141</b>

### MUTUAL AID RECEIVED

P. SUNCOAST	SEMINOLE	TREASURE ISLAND	ST. PETE BEACH	LEALMAN	ST. PETERSBURG	GULFPORT	S. PASADENA
25	102	106	13	2	3	1	2
							<b>TOTAL 254</b>

### GRAND TOTALS FOR REDINGTON BEACH

TOTAL OF CALLS RESPONDED BY MADEIRA BEACH	TOTAL OF CALLS TO THE COMMUNITY
<b>152</b>	<b>186</b>

### GRAND TOTALS FOR NORTH REDINGTON BEACH

TOTAL OF CALLS RESPONDED BY MADEIRA BEACH	TOTAL OF CALLS TO THE COMMUNITY
<b>148</b>	<b>284</b>

### GRAND TOTALS FOR REDINGTON SHORES

TOTAL OF CALLS RESPONDED BY MADEIRA BEACH	TOTAL OF CALLS TO THE COMMUNITY
<b>43</b>	<b>353</b>





*SPECIAL APPRECIATION AND RECOGNITION TO THOSE WHO PROVIDED SUPPORT AND DIRECTION*

# 2023 BOARD OF COMMISSIONERS



Jim Rostek  
Mayor



David Tagliarini  
District #1



Vice-Mayor  
Rey Kerr  
District #2



Eddie McGeehen  
District 3



Anne-Marie Brooks  
District #4

This document is submitted as a perspective of the Madeira Beach Fire Department for the time period listed. It is not intended to be all-inclusive; the information represented here is presented to the best of our understanding and ability. It has been obtained from various sources. These sources have only been validated to the extent necessary to publish this report and are expected to be accurate and reliable.