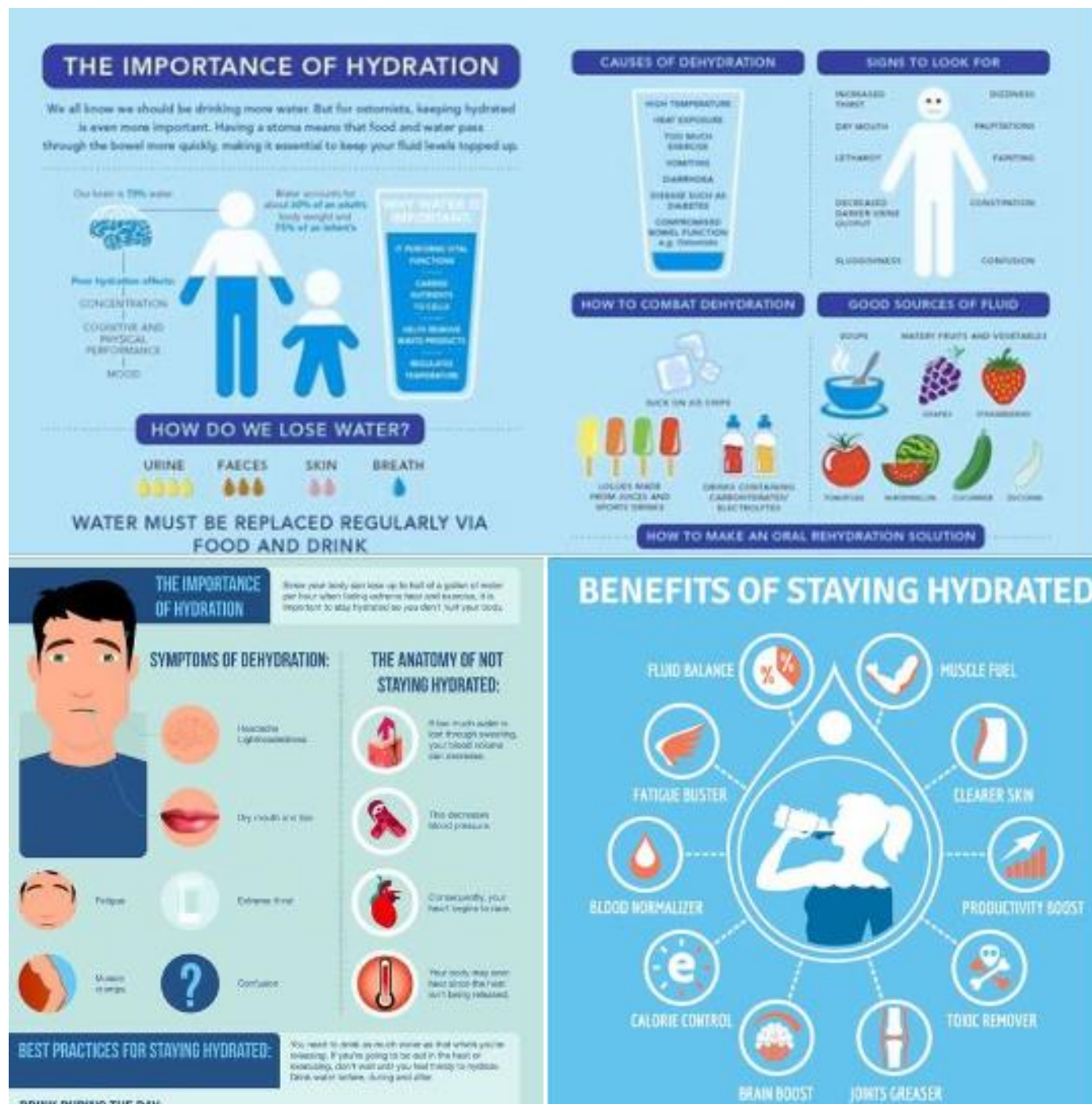


CITY MANAGER'S REPORT - JULY 2024

CITY MANAGER

I hope you continue enjoying summer as we continue experiencing the typical heat and humidity that force many of us and thousands of visitors to our sand and water destinations as well as inside into air-conditioned locations such as restaurants, retail stores, and various entertainment venues. As the heat/humidity continue, it is important to remember that our fluid levels can drop by 2-3% of our body weight before we even realize we are thirsty. Consequently, we must remember to drink fluids (water is a great one) even before we are thirsty, particularly before, during, and after outdoor activities.



Please remember our four-legged friends (pets) particularly dogs are very susceptible to heat stroke as well as burning their paws on hot pavement/asphalt.

Additionally, it is important to remember that as we continue enjoying the gulf, the various waterways, and pools, that we exercise safety by utilizing all available safety precautions and devices from swimming in marked areas to wearing safety devices on boats to following all posted signs and markers both on water and on land.



HEAT SAFETY

GIVE YOUR PET ACCESS TO FRESH WATER

EXERCISE
Limit the duration and strenuousness of outdoor activities.

HEAT STROKE
Symptoms include heavy panting, huffing, and mobility problems. If you notice these, cool your pet down immediately.

SHADE
If left outside, provide all-day shade for your pet.

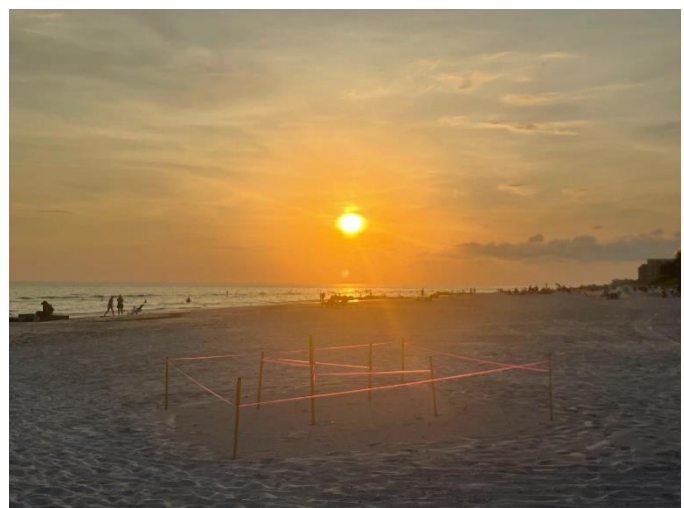
ASPHALT
If asphalt is too hot for bare feet, it's too hot for your pet.

CARS
Never leave your pet in a car, even with the windows down.

american pets! alive!



As we celebrated our Independence Day Holiday, a very big thank you to various City departments including Recreation, Public Works, and Fire for coordinating our Fireworks show (July 3), distributing drink koozies containing a trash bag to help keep our beach clean (July 4), and participating on the Friday, July 5th sand clean-up as well as the normally scheduled 1st Saturday of the month, Trash Pirates clean-up at Archibald Park and John's Pass Village and Boardwalk. The City very much appreciated the work and certainly all who participated in the various ongoing efforts to keep our slice of paradise as clean and beautiful as possible.



WEATHER & HURRICANE SEASON – June 1 to November 30

An additional important reminder is to take shelter when hearing thunder. If you are outside such as on the sand, please move away from the water to the nearest shelter. Storms particularly in the afternoon tend to develop rather quickly and contain lightning. Yes, storms tend to dissipate almost as quickly as they form; however, avoiding being outside during lightning is something we all need to do. A few lightning tips from the National Weather Service:

Lightning: What You Need to Know

- NO PLACE outside is safe when thunderstorms are in the area!!
- If you hear thunder, lightning is close enough to strike you.
- When you hear thunder, immediately move to safe shelter: a substantial building with electricity or plumbing or an enclosed, metal-topped vehicle with windows up.
- Stay in safe shelter at least 30 minutes after you hear the last sound of thunder.

Indoor Lightning Safety

- Stay off corded phones, computers and other electrical equipment that put you in direct contact with electricity.
- Avoid plumbing, including sinks, baths and faucets.
- Stay away from windows and doors, and stay off porches.
- Do not lie on concrete floors, and do not lean against concrete walls.

Last Resort Outdoor Risk Reduction Tips

If you are caught outside with no safe shelter anywhere nearby the following actions may reduce your risk:

- Immediately get off elevated areas such as hills, mountain ridges or peaks
- Never lie flat on the ground
- Never shelter under an isolated tree
- Never use a cliff or rocky overhang for shelter
- Immediately get out and away from ponds, lakes and other bodies of water
- Stay away from objects that conduct electricity (barbed wire fences, power lines, windmills, etc.)

-A few on-line sites to stay updated on weather conditions:

<https://www.baynews9.com/fl/tampa/weather/radar>

<https://www.fox13news.com/weather>

<https://www.wtsp.com/radar>

A reminder that our Madeira Beach Rec Center has a weather station and lightning detection system located on top of the building. The system/software offers a public page for the community to utilize when there is weather approaching. Check it out here: <https://bit.ly/43CfwPW>



FEMA- August Plan

Summer means thunderstorms!



**FEMA**
FEMA V-1009/May 2018

**BE PREPARED FOR A
THUNDERSTORM,
LIGHTNING,
OR HAIL**

Lightning is a leading
cause of injury
and death from
weather-related hazards.

Thunderstorms are
dangerous storms that
include lightning.



Include powerful winds



Create lightning and hail



Cause flash flooding
and tornadoes

**IF YOU ARE UNDER A THUNDERSTORM WARNING,
FIND SAFE SHELTER RIGHT AWAY**

When thunder roars,
go indoors.



Pay attention to alerts
and warnings.

Move from outdoors
into a building or car.



Unplug appliances.



Do not use landline phones.

Ready Pinellas Emergency Planning Mobile App

Introducing the new and improved Ready Pinellas mobile app!

Ready Pinellas is designed to help residents prepare themselves and their families before, during and after a storm. It is available for free download on the Apple [App Store](#) and [Google Play](#) store.

Note: Android device users who already had the previous Ready Pinellas app installed will need to download the new app from the Google Play store and remove the old app from their devices. Apple device (iPhone and iPad) users will see the app automatically updated.

The new app features a refreshed design and user experience, additional information and tips, and convenient checklists to make sure you and your family are prepared. App users can use emergency supply checklist, home inventory and emergency contacts tools to build a personal emergency plan.

As a storm approaches, the app will provide real-time updates to help keep you safe, including detailed information that is available at your fingertips even if you lose internet connectivity. It will provide resources to contact us year-round and during a disaster and give you tips to Stay Informed.



Ready Pinellas App Features

- **Know Your Zone:** If you have your locator services on, the app will tell you if you are in a designated evacuation zone. You can also look up other addresses to see if they are in an evacuation zone. Remember: Evacuation zones were updated for the 2022 hurricane season, so you may have a new zone. When a storm is approaching, it will tell you if Pinellas County is in the 5-day or 3-day cone and if an evacuation order has been issued.
- **Make a Plan:** Use our emergency supply checklist, home inventory and emergency contacts tools to build a personal emergency plan that you can share. You can take pictures of items for your home inventory.
- **Push Notifications:** Through the app, you will receive informational and emergency notifications from Pinellas County Emergency Management, the National Weather Service and [Alert Pinellas](#).
- **Special Needs:** You can learn more about special needs assistance, which is intended for those who need transportation or require minimal medical assistance while seeking public shelter. You can register from the app.
- **Preparedness Tips:** Learn how to prepare your family, pets, home, condo, mobile home, boat and more.
- **Safety Tips:** Find information on What to Do Now before, during, and after an event. Learn about year-round preparedness, how to clean up after a flood or food safety if power has been out.
- **Report Damages** after a storm has hit Pinellas County.

PUBLIC SAFETY

More safety tips for pedestrians . . . many residents and visitors daily enjoy walking our city streets including our main N/S route of Gulf Blvd. Very important when crossing Gulf Blvd as well as any other busy/high traffic/multi-lane road/street to utilize marked crosswalks. Vehicle drivers, bicyclists, and pedestrians must always exercise caution as listed in the below information:

- **Pedestrian:** Always use marked crosswalks
- **Vehicle:** Always stop for pedestrians in crosswalks until all have left the crosswalk
- **Bicyclist:** Always wear a helmet
- **Bicyclist:** Always check for oncoming traffic before entering an intersection
- **Pedestrian:** Always use available sidewalks, if no sidewalk, walk on the side facing traffic
- **Vehicle:** Always drive attentively, cautiously, avoid texting or other distractions
- **Vehicle:** Always obey all traffic laws; follow posted speed limits, watch for road signs
- **Pedestrian:** Always use marked crosswalks
- **Bicyclist:** Always signal your turns
- **Bicyclist:** Always stop at stop signs, red lights, crosswalks with pedestrians
- **Vehicle:** Always signal your intentions
- **Pedestrian:** Always stay alert and attentive

Get There Safely

SAFETY WHILE WALKING

Think Ahead
Will that car turn? Is that truck backing up? Look around and think ahead.

Be Sure
Make eye contact with the driver before crossing in front of any vehicle.

Be Seen
Wear bright-colored clothing during the day. At night, wear white or reflective clothing, and carry a flashlight.

Be Predictable
No surprises! Never step into the road suddenly or from behind a parked car or other obstacle.

Use the Crosswalks
Use the pedestrian crossing signals at busy intersections; they make crossing the street safer.

Be Part of a Group
Cross the street with a group or a crossing guard. A group is easier for a driver to see than just one person.

Use Sidewalks
If there are no sidewalks, walk on the side of the road facing the traffic so you can see the cars coming and step off the road in a hurry.

SAFETY WHILE BIKING

- Wear a helmet.
- Remove headphones to hear traffic.
- Cross at corners and watch for turning traffic.
- Check for oncoming traffic before entering every intersection.
- Walk your bike across the street using the crosswalk.
- Signal your turns.
- Cross with a crossing guard whenever possible.
- Don't ride between cars – even parked cars.
- Stop at all stop signs and red lights.
- Ride with traffic, not against it.
- Always ride as if drivers don't see you!

Attach a day-glo stick or reflective tape to your bike to be more visible.

SAFETY ON THE BUS

- Stay alert for cars when getting off the bus.
- Stay seated until your stop.
- Obey the bus driver.
- Be on time! Running to or from the bus leads to accidents.
- Stand back from the curb and away from traffic while waiting for the bus.

Be aware of cars and traffic while waiting for the school bus.

SAFETY WHILE DRIVING

Be Alert
Be on the lookout for pedestrians and bicycles. Be extra careful at intersections.

Obey All Traffic Laws
Follow the speed limit and watch for road signs.

Take Extra Precautions Before Backing Up
Know what's behind your vehicle before backing up.

Signal Your Intentions
Use your turn signals before changing lanes or making a turn.

Pedestrians Have the Right of Way in a Crosswalk
Take note of pedestrian or school crosswalk signs alerting that a crosswalk is ahead.

Never Drink and Drive!
Arrange for a designated driver or taxi whenever necessary.

Scan Your Surroundings
Anticipate upcoming traffic situations.

Don't text while driving!
Texting can wait. The road traffic needs your full attention.

Ensure all lanes of traffic have stopped for you at the crosswalk before you cross, not just the lane closest to you.

BUS STOP AHEAD

SCHOOL BUS STOP AHEAD

Caution, there is a school bus stop ahead; children will be at the bus stop and near the roadway.

SCHOOL CROSSING

A School Crossing is ahead – these are crosswalks for children crossing the street. Approach any crosswalk with caution.

It is easier to see a group of pedestrians with a crossing guard.

What is a pe-des-tri-an (pa-des' tré-an)?

- A person on a scooter, skates or skateboard
- A person afoot
- A person in a wheelchair
- All of the above

Help us Keep Paradise as Clean as Possible – LEAVE NO TRACE

A few reminders below for all of us to continue to take care of our beautiful slice of paradise:

- Please deposit all trash/waste/rubbish in trash containers.
- Remember that only rain goes down the storm drain.
- Take your property with you when visiting and leaving the sand or public park; any unattended property such as a tent, a chair, towels etc., left on the sand or other public property will be removed and disposed of by the following morning.
- Please fill any holes made on the sand before leaving the sand.
- Remember that no animals such as dogs, cats, etc., are allowed on the sand.
- Want to help/assist even more – participate in one of the monthly and other clean-ups held by organizations such as:

Trash Pirates of Madeira Beach - <https://www.facebook.com/madeirabeachtrashpirates/>

Trash Turtles – <https://trashturtles.org>

Water Warrior Alliance – <https://www.waterwarrioralliance.org>

Did you Know?

The below internet links will take you to live web cameras of Madeira Beach sand views – helpful to see how busy locations may be, wave action, observe the City sand rake, and/or weather conditions – take a look:

1. Hubbard's Marina earth cam

<https://myearthcam.com/hubbardsmarina>

2. Baynews9 Camera at John's Pass

Park <https://www.baynews9.com/fl/tampa/weather/bay-news-9-cameras>

3. Commodore Beach Club

<https://commodorebeachclub.com/resort-details/live-webcam>

Sanitation-Trash Collection

REMINDER: Trash containers need to be stored somewhere other than curbside, and wheeled out to the curb for collection no earlier than 5:30 pm the day prior to collection, and removed away from the curb by sunset the day of collection. If your container is damaged or missing please contact the City of Madeira Beach Public Works/Sanitation department at 727.543.8154. The City of Madeira Beach greatly appreciates everyone's patience and understanding with the trash collection change that will help to keep our City even cleaner.



Recycling

Wednesday Pickup

1- 64 gallon container provided by Waste Pro

Recycled items accepted:

Plastic bottles, jugs, glass, metal cans, cardboard boxes, and paper.

Recycling statistics for the month of July 2024:

RECYCLING STATISTICS		
MATERIAL	Tons	%
Aluminum	0.79	2.00%
Cardboard	5.09	12.80%
Mixed Glass	15.30	38.50%
ONP	4.69	11.80%
Plastic	3.14	7.90%
Tin	0.48	1.20%
Contamination	10.25	25.80%
TOTAL	39.74	

13% higher than July 2023

PARKING

A few reminders regarding **resident** and **visitor** parking:

1. Residents can obtain up to 3 **RESIDENT PARKING PASSES** at no charge, that allow residents to park in any City of Madeira Beach lot while the lot is open as well as on streets that allow resident parking. No overnight parking is allowed at any City lot using the **RESIDENT PARKING PASS** (everyone can use the overnight parking lot areas by paying the \$3/hour fee).
2. **RESIDENT PARKING PASSES** are only for residents physically living within the City of Madeira Beach City limits – not for businesses, visitors, or tourists – **MUST** prove City residency and provide a driver's license and a valid vehicle registration.
3. **VISITOR PARKING** is available at all City of Madeira Beach lots and the John's Pass Boardwalk & Village on-street spaces and the lot adjacent to the VFW (entrance off 129th Ave E) by paying the hourly rate of \$3 (may pay using the ParkMobile app or at a kiosk/meter located at each lot). Overnight parking is only allowed at City of Madeira Beach lots located from 130th Ave to 136th Ave (entrances off Gulf Blvd) – not allowed at the John's Pass Parking lot and the Archibald Park Parking lot – by paying the \$3/hr rate (available for up to 7 days).
4. Please keep in mind, particularly visitors, that there are other privately-run/managed parking lots throughout our City that typically charge \$4-\$8/hour as well as the occasional \$20 - \$45 full day rate/charge. These lots are NOT owned/managed/enforced by the City of Madeira Beach.
5. **Effective Jan 2, 2025**, all parking meters/kiosks will no longer be available to accept parking payments. All payments will only be made via the Park Mobile App or via Park Mobile online at: www.parkmobile.io,



CITY BUDGET-FY 2025

The next Fiscal Year (FY) 25 Budget Workshop will take place on Wednesday, August 28, beginning at 4 pm (at City Commission Chambers, 300 Municipal Dr) to discuss department personnel and operating expenditures, the City's tax (millage) rate, and various non-departmental expenditures including contributions to other agencies (Chambers of Commerce, Coast Guard Auxiliary, etc). A reminder that the City's fiscal year runs from October 1 to September 30 – so our fiscal year 2024, will conclude this September 30, with the fiscal year 2025, beginning the following day on October 1, 2024. Also, under Florida law we must adopt a balanced budget where our revenues equal our expenditures. Our property/millage tax rate compared to other cities (millage rate utilized for FY 23 budget):

MILLAGE RATES – MB & OTHER CITIES

<u>Municipality</u>	<u>FY 2022 millage rate</u>
City of Clearwater	5.8850
City of South Pasadena	4.9650
City of Dunedin	4.1345
City of Treasure Island	3.8129
City of St. Pete Beach	3.1500
City of Madeira Beach	2.7500
City of Belleair Beach	2.0394
City of Indian Rocks Beach	1.8326

FY 2025 Budget revenues and expenditures by fund:

General Fund Tentative Millage Rate:

2.7500 mills

		Governmental							Proprietary						
		Archibald Park Fund	Building Fund	Debt Service Fund	Gas Tax Fund	General Fund	Impact Fee Fund	Local Option Sales Tax Fund	Total	Marina Fund	Parking Fund	Sanitation Fund	Stormwater Fund	Total	Grand Total
No.	Character Description														
31	Taxes	-	-	-	55,000	7,095,000	-	700,000	7,850,000	-	-	-	-	-	7,850,000
32	Permits, Fees And Special Assessments	-	1,305,000	-	-	707,500	179,050	-	2,191,550	-	-	-	-	-	2,191,550
33	Intergovernmental Revenue	1,451,000	-	-	45,000	1,448,791	-	-	2,944,791	70,000	-	-	1,274,700	1,344,700	4,289,491
34	Charges For Services	672,000	-	-	-	1,649,293	-	-	2,321,293	1,861,200	3,176,500	1,840,000	650,000	7,527,700	9,848,993
35	Judgements, Fines, & Forfeits	-	-	-	-	27,000	-	-	27,000	-	500,000	-	-	500,000	527,000
36	Miscellaneous Revenues	27,000	40,000	14,500	2,500	1,013,751	6,800	75,000	1,179,551	100,000	52,250	47,000	130,000	329,250	1,508,801
38	Other Sources	-	-	299,125	-	1,475,000	-	-	1,774,125	-	-	-	1,495,249	1,495,249	3,269,374
		2,150,000	1,345,000	313,625	102,500	13,416,335	185,850	775,000	18,288,310	2,031,200	3,728,750	1,887,000	3,549,949	11,196,899	29,485,209
Fund Balance/Net Position Carryover Used		2,372,950	443,025	6,375	34,000	2,858,016	-	2,044,000	7,758,366	-	-	98,770	5,592,171	5,690,941	13,449,307
Total Sources		4,522,950	1,788,025	320,000	136,500	16,274,351	185,850	2,819,000	26,046,676	2,031,200	3,728,750	1,985,770	9,142,120	16,887,840	42,934,516
10	Personnel Services	332,200	646,525	-	-	5,930,535	-	-	6,909,260	389,300	286,300	735,520	330,520	1,741,640	8,650,900
30	Operating Expenditures/Expenses	525,750	161,500	-	131,500	7,190,796	-	-	8,009,546	301,260	423,985	1,098,250	445,600	2,269,095	10,278,641
60	Capital Outlay	3,555,000	675,000	-	-	1,007,500	45,000	2,819,000	8,101,500	370,000	150,000	-	6,760,000	7,280,000	15,381,500
70	Debt Service	-	-	320,000	-	-	-	-	320,000	-	-	-	1,496,000	1,496,000	1,816,000
80	Grants And Aids	-	-	-	-	112,355	-	-	112,355	-	-	-	-	-	112,355
90	Other Uses	110,000	305,000	-	5,000	2,033,165	-	-	2,453,165	202,000	765,000	152,000	110,000	1,229,000	3,682,165
		4,522,950	1,788,025	320,000	136,500	16,274,351	45,000	2,819,000	25,905,826	1,262,560	1,625,285	1,985,770	9,142,120	14,015,735	39,921,561
Fund Balance/Net Position Available		-	-	-	-	-	140,850	-	140,850	768,640	2,103,465	-	-	2,872,105	3,012,955
Total Uses		4,522,950	1,788,025	320,000	136,500	16,274,351	185,850	2,819,000	26,046,676	2,031,200	3,728,750	1,985,770	9,142,120	16,887,840	42,934,516

Gulf Beaches Public Library



In addition to various eResources, databases, books, and other available materials, our Gulf Beaches Library also offers Notary services for \$5.00 per stamp. To schedule an appointment for Notary services please call Monday – Friday, 727-391-2828. Of course, libraries still continue to loan out materials, please take a look at the loan periods, item limits, and length of check-out for the below items.

Loan Periods

Items	Item Limit	Due Dates
New Books	50	14 days
Books	50	28 days
DVD	25	7 days
CD Books	25	28 days
CD Music	25	14 days
Sunshine States	2	14 days

You may check out a combined total of 50 items.

If you do not already have a library card, please stop by to obtain one, items needed to obtain one:

Provide the following identification with your name and current local address. A current valid Florida Driver's License/Florida Identification Card -OR- An alternate picture ID -AND- Your current TRIM notice or tax bill – A current utility bill (including cable television) – A long-term lease on property in the Cooperative area – A deed to property in the Cooperative area – Vehicle registration or title-current year – Voter's registration – Other appropriate identification

A unique identification number is needed for each library card. You may provide a social security number or a passport number for all family members applying for a card. Alternatively, a library may use a combination of the last three letters of the name and the birth date. Complete and sign the application and begin borrowing materials.

TURTLE NESTING SEASON CONTINUES



Here in Madeira Beach, we love sea turtles! Nesting season runs from May 1st to November 30th. The City of Madeira Beach greatly appreciates your support by helping to pick up litter on the beach, filling sand holes on the beach, and making sure your home lighting is sea turtle compliant if you live on the beach side. Look below for some links on more information on what you can do and organizations that help our beloved sea turtles!

- **Pinellas County Sea Turtle Information** – pinellascounty.org/environmental/coastal/sea-turtles.htm
- **SeaTurtleTrackers.org**
- **Clearwater Marine Aquarium Rescue Program** – <https://mission.cmaquarium.org/what-we-do/rescue-rehab-release>
- **Madeira Beach Leave No Trace Ordinance** - <https://storage.googleapis.com/proudcity/madeirabeachfl/uploads/2021/04/Leave-no-trace-flyer.pdf>

As in prior months thousands of visitors to our City with many enjoying a few events including a life jacket giveaway day, the July 3 fireworks, various beach clean-ups, softball tournaments at our R.O.C. park softball fields, and much more.

Please read below for additional events in August including our monthly Commission meetings on Aug 14 and Aug 28 that will also include a budget workshop beginning at 4 pm on the 28th, MB beach clean-up on Saturday, and Final Friday on Friday, August 30 beginning at 6 pm.

UPCOMING SPECIAL EVENTS/ACTIVITIES

- (1) **Trash Pirates monthly clean up** at Johns Pass, Sat, Aug 3, 8 am.
- (2) **Public Meetings on Proposed Parking Garage**, both at City Hall Commission Chambers, Sat, Aug 17, 11 am and Wed, Aug 21, 6 pm
- (3) **Final Friday** Music Event, Friday, August 30, 6 pm to 9 pm, John's Pass Bell Tower area



Additional details are included in this report including specific departmental information and data. Please feel free to review and ask questions regarding our city services provision. Please feel free to contact me for any City matter or just to say hello:

rgomez@madeirabeachfl.gov

727.580.8014

Building Official(s) – Development Report (July - 2024)

City Building Official, Frank DeSantis reports that our redevelopment/economic development continues at a steady pace including several large condominium projects on-going and/or under current plan review.

- The **Schooner Resort** is under review
- **15405 Gulf Blvd. Azul Townhomes**
 - Phase #1**
 - ✓ Pavers are at 95% complete.
 - ✓ Still waiting on D.O.T.to approve M.O.T. plans and the design mix. This is holding up the Gulf Blvd access.
 - ✓ The 1st street east entry asphalt is being installed.
 - ✓ The pavers can be finished in this area early next week. This will complete the East entry.
 - ✓ Landscaping is 90% complete. Can not finish until Gulf Blvd entry is done. (see above)
 - ✓ All construction fence has been removed.
 - Phase #2**
 - ✓ Same as Phase #1 for all comments
 - ✓ Waiting on pool fence install to complete marcite for the pool.
- **14048 Gulf Blvd – Beach Flower**
 - ✓ Scheduled to pour our 5th floor (top floor) slab
 - ✓ Tentatively have our roof slab to pour in 10 to 14 days
 - ✓ Install the exterior masonry.
 - ✓ On schedule for completion in the first quarter of 2025.

Permit Type Issued (07/01/2024 through 07/31/2024):

- | | | |
|--|--|--|
| • SFH projects – (1)
<i>Single Family Homes</i> | • Commercial projects – (3)
<i>Remodel</i> | • Residential projects – (9)
<i>Remodel</i> |
| • Docks & Lift – (10)
<i>Replacement & Repairs</i> | • Roof – (12)
<i>New & Re-roof</i> | • Fence – (10)
<i>New & Replacement</i> |
| • Generator – (2)
<i>New Generator</i> | • Swimming Pool – (4)
<i>New</i> | • Seawall– (4)
<i>New Seawall & Cap</i> |
| • Demo Permits – (3)
<i>Demolition</i> | • Driveway/Pavers – (1)
<i>New</i> | • Deck – (2)
<i>New & Replacement</i> |
| • Windows/Doors – (21)
<i>Replacement</i> | • Mechanical E/C/O's – (31)
<i>New AC units</i> | • Sign projects – (1)
<i>New Sign Permits</i> |
| • Electrical – (11)
<i>Meter, Panel C/O's</i> | • Plumbing – (7)
<i>Sewer & Replacements</i> | • Solar Permits – (1)
<i>New Solar Permits</i> |

Monthly Totals (07/01/2024 through 07/31/2024):

- **Building Department:**
 1. 139 different types of permits were processed & issued.
 2. \$194,924.86 Permit fees collected.
 3. \$5,503,690.36 Permit estimated value or cost.
 4. 199 completed inspections (average 10 +/- per day)

➤ **Building Code Compliance & Residential Rental Inspections:**

1. 9 new code compliance cases were created.
2. 14 code compliance cases being resolved.
3. 41 open/outstanding code compliance cases.
4. 5 residential rental inspections for the month of July.

Community Development – July Report

Permit applications are currently at a one to two week review timeline.

Traffic continues to be steady for open hours on Wednesdays.

The Sanderling Site Plan was presented by Planner II, Jay Stearman, at the July 1 Planning Commission meeting. Jack Bodziak and Britt Hayes also conducted a short presentation. There were questions by both the commissioners and residents regarding the plan. The primary concerns from the residents were parking and the potential for noise from the rooftop area. The Planning Commission ultimately voted to send the plan to the Board of Commissioners with provision to bring the parking lot to compliance and provide dog waste bags in the dog walking area.

City staff and staff from Kimly Horn attended the Final Friday event in John's Pass Village and handed out survey cards. The goals are to gain input from city residents regarding the Master Plan.

The Master Plan can be viewed at this URL: <https://madeirabeachfl.gov/master-plan/>

Ordinance 2024-08 – Fences will have the second reading at the regular BOC meeting on August 8th.

Commissioner Ghovae has moved to the Board of Commissioners. There is a vacancy on the Planning Commission Board. There have been two applications submitted.

Marina

Revenue by category through July 31, 2024:

Account #	Description	Oct'23	Nov'23	Dec'23	Jan'24	Feb'24	Mar'24	Apr'24	May'24	Jun'24	Jul'24	Aug'24	Sep'24	Totals
405.9300.347500	ATM Service Charge	-	-	-	157.00	-	-	-	-	-	-	-	-	\$ 157.00
405.9300.347901	Unleaded Fuel Sales	153,969.74	160,573.74	99,557.48	74,107.49	134,988.11	240,673.70	303,421.39	288,236.03	309,978.33	321,333.40	-	-	\$ 2,086,839.41
405.9300.347902	Diesel Sales	9,228.65	7,495.39	11,003.36	13,599.55	8,490.76	9,723.57	10,124.47	10,039.35	6,920.53	9,619.35	-	-	\$ 96,244.98
405.9300.347903	Diesel - Commerical	36,334.16	27,119.20	21,559.57	23,409.26	30,523.49	35,490.74	23,991.46	38,006.36	32,424.89	40,676.99	-	-	\$ 309,536.52
405.9300.347904	Purchases Fuel	-	-	-	-	-	-	-	-	-	-	-	-	\$ -
405.9300.347905	Propane Sales	160.93	183.92	206.91	206.91	206.91	206.91	22.99	206.91	45.98	229.90	-	-	\$ 1,678.27
405.9300.347906	Propane - Exempt	22.99	22.99	-	-	75.00	-	22.99	-	-	-	-	-	\$ 143.97
405.9300.347907	Purchases Propane	-	-	-	-	-	-	-	-	-	-	-	-	\$ -
405.9300.347908	Misc Store Income-Taxable	17,513.88	18,899.35	16,118.21	14,682.04	17,908.99	30,108.54	31,946.64	33,271.86	37,919.67	35,634.67	-	-	\$ 254,003.85
405.9300.347909	Misc Store Income-Non Taxable	204.00	146.00	103.99	121.00	149.00	200.00	224.00	328.04	305.00	537.00	-	-	\$ 2,318.03
405.9300.347910	Purchases Store	-	-	-	-	-	-	-	-	-	-	-	-	\$ -
405.9300.347911	Dry Storage Fees	11,335.05	11,204.34	11,204.34	11,463.38	11,435.21	11,407.04	11,091.68	11,455.93	11,310.94	11,310.94	-	-	\$ 113,218.85
405.9300.347912	Transient Rentals	6,825.88	8,045.09	5,830.87	6,716.10	5,827.49	9,049.38	7,834.08	9,581.38	9,552.13	9,241.08	-	-	\$ 78,503.48
405.9300.347913	Marina Slip Rent	20,618.00	21,615.00	21,615.00	21,615.00	21,927.00	22,323.50	22,313.50	22,671.50	22,671.50	22,671.50	-	-	\$ 220,041.50
405.9300.347914	Annual Fishing Tournament	-	-	-	-	6,146.70	24,693.58	322.43	-	-	-	-	-	\$ 31,162.71
405.9300.347915	Land & Sea Sales	-	-	-	-	-	-	-	-	-	-	-	-	\$ -
405.9300.347916	Late Fees	-	-	-	-	-	-	-	-	-	-	-	-	\$ -
405.9300.347917	Boat Ramp Parking	510.28	402.81	325.25	262.62	371.06	515.91	909.42	1,149.55	927.15	927.77	-	-	\$ 6,301.82
405.9300.361100	Interest Earnings	14,528.90	13,015.69	13,966.05	14,521.48	13,511.53	14,845.25	15,140.95	16,810.73	3,286.56	3,418.16	-	-	\$ 123,045.30
405.9300.364000	Sale/Disposition of Capital Assets	-	-	-	-	-	-	-	-	-	-	-	-	\$ -
405.9300.369900	Other Miscellaneous Revenues	-	-	-	-	-	-	-	-	-	-	-	-	\$ -
405.9300.369903	Refund Prior Year Expenses	-	-	-	-	-	-	-	-	-	-	-	-	\$ -
405.9300.369904	Sales Tax Collection Allowance	30.00	30.00	30.00	30.00	30.00	30.00	30.00	30.00	30.00	30.00	-	-	\$ 300.00
405.9300.369912	Boat Ramp Fees	-	-	-	-	-	-	-	-	-	-	-	-	\$ -
405.9300.369913	Commission - Laundry Equipment	55.00	51.25	65.50	45.50	77.50	99.75	129.75	97.25	59.00	68.50	-	-	\$ 749.00
405.9300.380000	Other Sources	-	-	-	-	-	-	-	-	-	-	-	-	\$ -
405.9300.380001	Fund Balance/Net Position Carryover	-	-	-	-	-	-	-	-	-	-	-	-	\$ -
405.9300.381002	Transfer from Sanitation Fund	-	-	-	-	-	-	-	-	-	-	-	-	\$ -
405.9300.381003	Transfer from Stormwater Fund	-	-	-	-	-	-	-	-	-	-	-	-	\$ -
405.9300.389201	Federal Grant - Clean Vessel	-	-	-	-	-	-	-	-	4,481.67	-	-	-	\$ 4,481.67
405.9300.389801	Asset Transfer In from Governmental	-	-	-	-	-	-	-	-	-	-	-	-	\$ -
		271,337.46	268,804.77	201,586.93	180,937.33	251,668.75	399,367.87	427,525.75	431,884.89	439,913.35	455,699.26	-	-	\$ 3,328,726.36



WATERWAY CLEAN UP

September 7, 2024 • Madeira Beach Marina

Please join us on Saturday, September 7 to participate in the Amphibious Trash Round-Up. Participants can help continue to keep our City clean by picking up trash by land and by sea (bay and gulf) and then bring it to the City Marina to partake in a variety of contests to win prizes:

PRIZES AWARDED IN 8 DIFFERENT DIVISIONS

- ✓ Most Cigarette Butts
- ✓ Most Glass
- ✓ Most Fishing Line / Gear

- ✓ Most Plastic
- ✓ Oldest Beer Bottle/Can
- ✓ Strangest Item

- ✓ Peoples Choice (favorite item)
- ✓ Most Trash Overall

Contests, weigh-in, free lunch begin at noon on Saturday, September 7, 2024

PARKING

Revenue through July 2024:

Month	Parking Meter	Parking Fines		Monthly Totals
Oct-23	235,464.24	36,881.00		272,345.24
Nov-23	187,037.59	39,142.00		226,179.59
Dec-23	161,639.03	32,960.00		194,599.03
Jan-24	177,987.57	43,720.00		221,707.57
Feb-24	243,456.12	39,046.40		282,502.52
Mar-24	405,334.81	39,465.00		444,799.81
Apr-24	357,611.82	40,710.00		398,321.82
May-24	361,132.67	43,862.60		404,995.27
Jun-24	370,944.13	50,745.00		421,689.13
Jul-24	370,003.05	69,195.00		439,198.05
Aug-24	-	-		-
Sep-24	-	-		-
Fiscal Year 2024	\$ 2,870,611.03	\$ 435,727.00		\$ 3,306,338.03

Effective Jan 2, 2025, all parking meters/kiosks will no longer be available to accept parking payments. All payments will only be made via the Park Mobile App or via Park Mobile online at: www.parkmobile.io,