

CHAPTER 4. BEST MANAGEMENT PRACTICES FOR EROSION AND SEDIMENTATION CONTROL

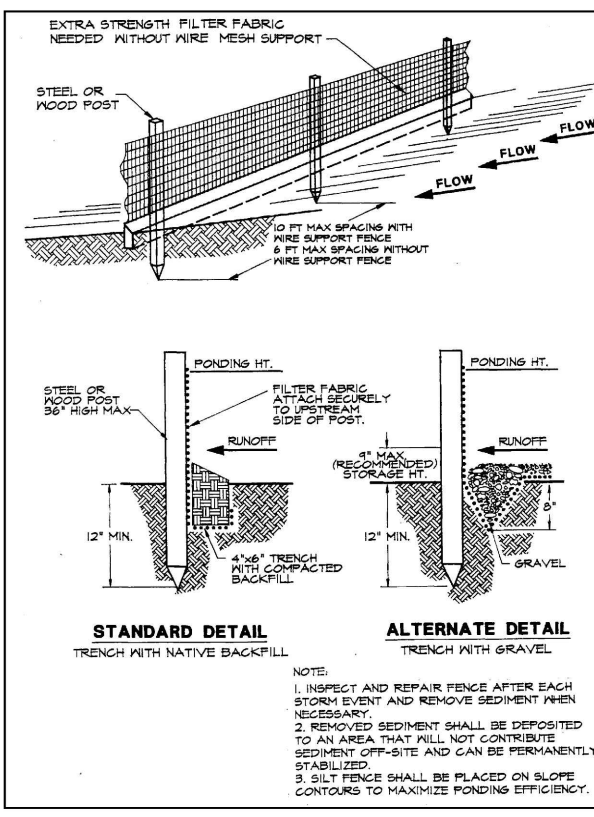
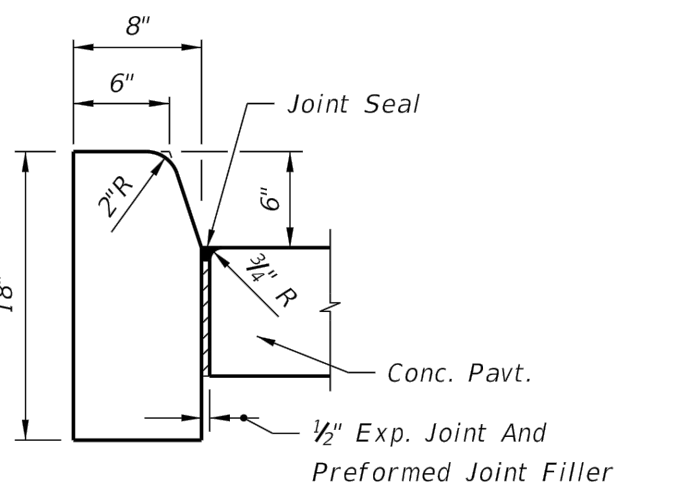


Figure 4.4a: Silt Fence. Source: Erosion Control.



FDOT CONCRETE CURB TYPE 'D' DETAIL. SCALE: 1"=1'-0"

LEGAL DESCRIPTION: LOTS 1, 2, 71, 72, 73, AND 74, SUNNY SHORES, ACCORDING TO THE PLAT THEREOF RECORDED IN PLAT BOOK 24, PAGE 15, OF THE PUBLIC RECORDS OF PINELLAS COUNTY, FLORIDA.

AND

LOT 3, TOGETHER WITH ALL LAND LYING BETWEEN THE SAID LOT 3 AND THE WATERS OF THE GULF OF MEXICO, SUNNY SHORES, ACCORDING TO PLAT THEREOF AS RECORDED IN PLAT BOOK 24, PAGE 15, OF THE PUBLIC RECORDS OF PINELLAS COUNTY, FLORIDA.

AND

LOTS 1, 2, 3, AND 4, MADEIRA SHORES, ACCORDING TO THE MAP OR PLAT THEREOF, AS RECORDED IN PLAT BOOK 22, PAGE 87, OF THE PUBLIC RECORDS OF PINELLAS COUNTY, FLORIDA.

LIGHTING LEGEND

- LED CANOPY LED FIXTURE WITH REQUIRED MOUNTING HARDWARE
EXTERIOR DOWN LIGHT WALL SCONCE WITH REQUIRED MOUNTING HARDWARE
BOLLARD LIGHT (LED)
LIGHT POLE LED (SINGLE LAMP)
LIGHT POLE LED (DOUBLE LAMP)

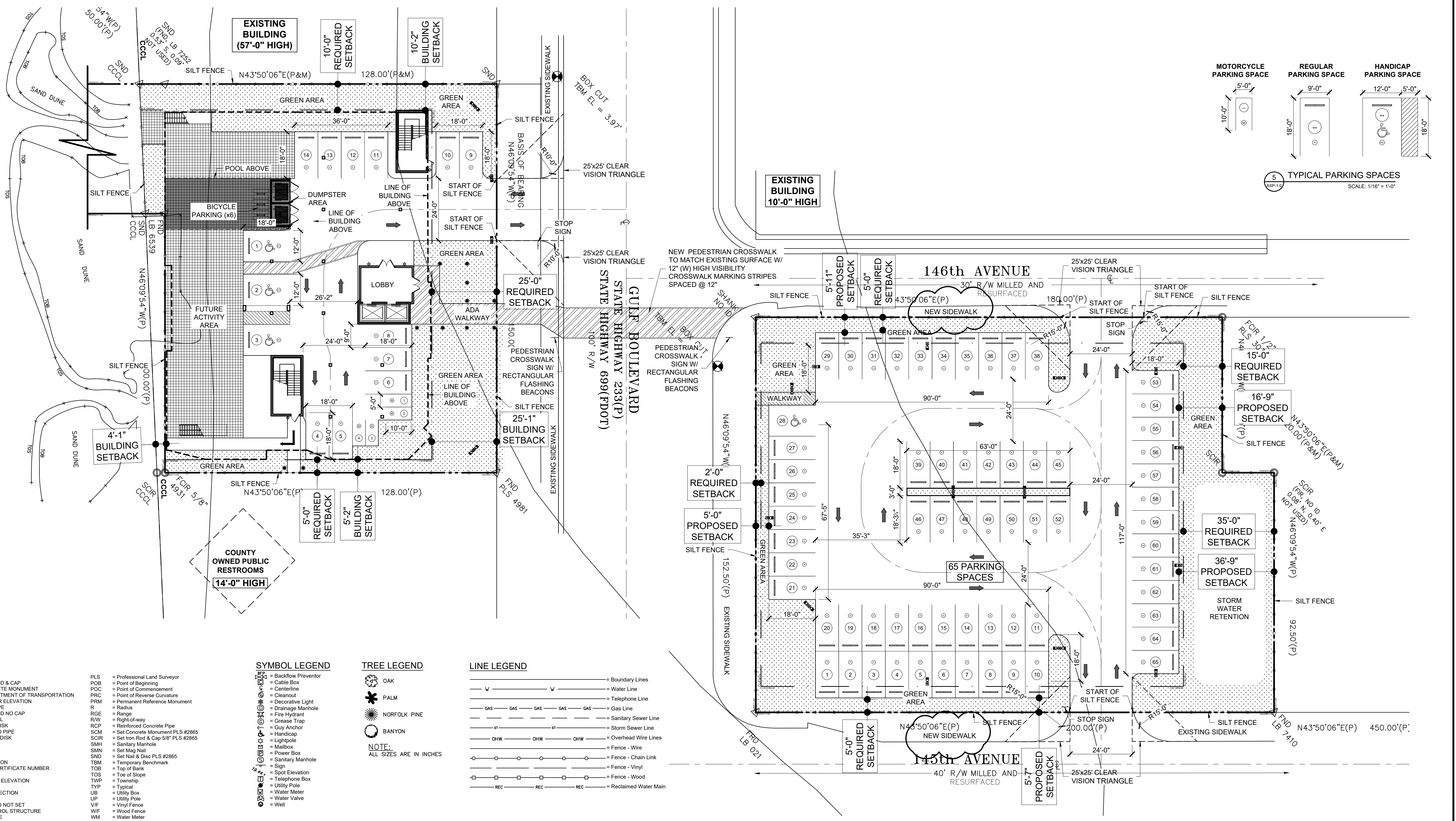
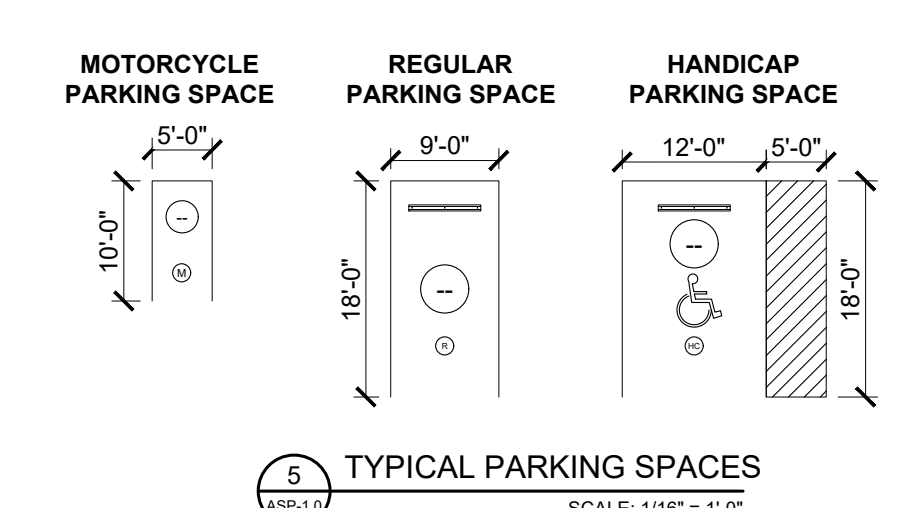
NOTES:

- 1. ALL LIGHTING TO BE PROPERLY "TURTLE" SHIELDED IN COMPLIANCE WITH LOCAL, STATE, AND FEDERAL STATUTES PER SECTION 110-506 - LIGHTING IN BEACH AREA.
2. ALL LIGHTS TO BE LED TECHNOLOGY.

SIGNAGE NOTES:

- 1. ALL SIGNAGE TO BE CONFORMED WITH THE CODE OF ORDINANCES OF MADEIRA BEACH, PART II, CHAPTER 102 - SIGNS, SEC. 102-11 THRU 102-96.

Table with 7 columns: CATEGORY, ALLOWABLE, EXISTING (WEST LOT), EXISTING (EAST LOT), PROPOSED (WEST LOT), PROPOSED (EAST LOT), TOTAL PROPOSED (WEST LOT + EAST LOT). Rows include Zoning, Land Use District, Setbacks, B.F.E., Finished Floor Elevation, Site Area, Density, Building Footprint/Coverage, Building Height/Floors, Floor Area Ratio (FAR), Impervious Surface Ratio (ISR), Landscape & Green Space, Vehicular & Pedestrian Use, and Parking Spaces (P.S.).



- LEGEND: (C) = Calculated Data, (D) = Data per Description, (F) = Field Determined, (M) = Measured Data, (P) = Data per Plat, +/- = Plus or Minus, A/C = Air Conditioner, B/W/F = Barbed Wire Fence, BFE = Base Flood Elevation, BFP = Backflow Preventer, CB = Chord Bearing, CH = Chord, C.A.B. = Condominium Plat Book, C.C. = Covered Concrete, C.S. = Concrete Slab, C.S.W. = Concrete Sidewalk, C.C.C.L. = Coastal Construction Control Line, C.L. = Centerline, C.L.F. = Chain Link Fence, C.O.V. = Covered, C.L.P. = Concrete Light Pole, C.M.P. = Corrugated Metal Pipe, CONC. = Concrete, D.A. = Delta Angle, D.B. = Deed Book, D.W. = Driveway, D.M.H. = Drainage Manhole, E/P = Edge of Pavement, EL = Elevation, E.O.W. = Edge of Water, F = FOUND, F.C.R. = FOUND IRON ROD & CAP, F.C.M. = FOUND CONCRETE MONUMENT, F.D.O.T. = FLORIDA DEPARTMENT OF TRANSPORTATION, F.F.E. = FINISHED FLOOR ELEVATION, F.I.P. = FOUND IRON PIPE, F.I.R. = FOUND IRON ROD NO CAP, F.M.N. = FOUND MAG NAIL, F.N.D. = FOUND NAIL & DISK, F.P.P. = FOUND PINCHED PIPE, F.R.D. = FOUND RIVET & DISK, G.I. = GRATE INLET, G.V. = GATE VALVE, H.V. = FIRE HYDRANT, I.E. = INVERT ELEVATION, I.C.N. = CORPORATE CERTIFICATE NUMBER, L.P. = LIGHT POLE, L.F.E. = LOWEST FLOOR ELEVATION, M.O.L. = MORE OR LESS, M.E.S. = MITERED END SECTION, N.D. = NAIL & DISK, N.F.N.S. = NOT FOUND AND NOT SET, O.C.S. = OUTFALL CONTROL STRUCTURE, O.H.W. = OVERHEAD WIRE, O.R. = OFFICIAL RECORDS BOOK, P.B. = PLAT BOOK, P.C.P. = PERMANENT CONTROL POINT, P.G.(S) = PAGE(S), P.L.S. = Professional Land Surveyor, P.O.B. = Point of Beginning, P.O.C. = Point of Commencement, P.O.R.C. = Point of Reverse Curvature, P.R.M. = Permanent Reference Monument, R = Radius, R.E.G.E. = Range, R.I.W. = Right-of-way, R.C.P. = Reinforced Concrete Pipe, R.C.M. = Set Concrete Monument PLS #2865, S.C.R. = Set Iron Rod & Cap 5/8\"/>

1 ARCHITECTURAL SITE PLAN. SCALE: 1" = 20'-0". Includes north arrow and graphic scale.

PROJECT SCHOONER RESORT 14500 - 14550 GULF BOULEVARD MADEIRA BEACH, FLORIDA ARCHITECTURAL SITE PLAN. JOHN A. BODZIAK ARCHITECT AIA, PA. ARCHITECTURE, DESIGN, AND CONSTRUCTION MANAGEMENT. FLORIDA REGISTRATION NO. AR00005065. EMAIL: JACK@BODZIAK.COM. 743 49th STREET N. SAINT PETERSBURG, FLORIDA 33710. TEL: (727) 327-1966 FAX: (727) 826-0968. DRAWN BY TT-AT-JB-CS. UPDATED ON Feb. 10, 21. DATE OCT - 2018. JOB PROJECT # 2018-029. SHEET # ASP-1.0.