

Vibra-Tech Engineers, Inc. Seismic Analysis Stop Event Report

Serial No: 10698 v6.13
Client: COUNTY OF MARIN
Operation: SAN RAFAEL ROCK QUARRY
Location: 16 MARIN BAY PARK CT.
Distance:
Operator: VIBRA-TECH IP2
Comment: WILLIAM HOSKEN RES.

Begin Date: 02/12/2019 07:00:50 (UTC-8)
End Date: 02/12/2019 20:00:00 (UTC-8)
Events over Trigger: 0 (2-1)
Record Time: 5.0 s
Seismic Trigger: 0.030 in/s
Sound Trigger: N/A
Battery Level: 8.3

Additional Info:

j-GEO-01252
N37 59.524, W122 27.373

Shaketable Calibrated: 11/09/2018
By: Vibra-Tech, Inc.
2700 Holloway Road - Suite 113
Louisville, KY 40299 U.S.A.
TEL: 502.240.9900 FAX: 502.240.9902

Dynamic Calibration Graph:



Cal Test Results:

Longitudinal: Pass
Transverse: Pass
Vertical: Pass
Sound: Pass

The seismograph located at 16 Marin Bay Park Court (S/N 10698) did not trigger during the shot on February 12, 2019 at approximately 11:33 indicating the ground vibrations produced were below the ground trigger level of 0.030 in/sec.

Vibra-Tech Engineers, Inc. Seismic Analysis

Stop Event Report

Serial No: 10698 v6.13
Client: COUNTY OF MARIN
Operation: SAN RAFAEL ROCK QUARRY
Location: 16 MARIN BAY PARK CT.
Distance:
Operator: VIBRA-TECH IP2
Comment: WILLIAM HOSKEN RES.

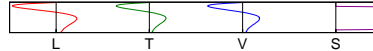
Begin Date: 03/19/2019 07:00:53 (UTC-7)
End Date: 03/19/2019 20:00:00 (UTC-7)
Events over Trigger: 0 (2-1)
Record Time: 5.0 s
Seismic Trigger: 0.030 in/s
Sound Trigger: N/A
Battery Level: 8.1

Additional Info:

j-GEO-01252
N37 59.524, W122 27.373

Shaketable Calibrated: 11/09/2018
By: Vibra-Tech, Inc.
2700 Holloway Road - Suite 113
Louisville, KY 40299 U.S.A.
TEL: 502.240.9900 FAX: 502.240.9902

Dynamic Calibration Graph:



Cal Test Results:

Longitudinal: Pass
Transverse: Pass
Vertical: Pass
Sound: Pass

The seismograph located at 16 Marin Bay Park Court (S/N 10698) did not trigger during the shot on March 19, 2019 at approximately 11:32 indicating the ground vibrations produced were below the ground trigger level of 0.030 in/sec.

Seismic Analysis

Velocity Waveform Analysis

Serial Number: 10698
Firmware Version: 0C-06.13
Event Date: 04/04/2019 11:33:39 (UTC -07:00)
Event number: 2
Recording Time: 5 s
Client: COUNTY OF MARIN
Operation: SAN RAFAEL ROCK QUARRY
Location: 16 MARIN BAY PARK CT.
Distance:
Operator: VIBRA-TECH IP2
Comment: WILLIAM HOSKEN RES.
Seismic Trigger: 0.03 in/s
Sound Trigger: OFF

Additional Info:

j-GEO-01252
 N37 59.524, W122 27.373

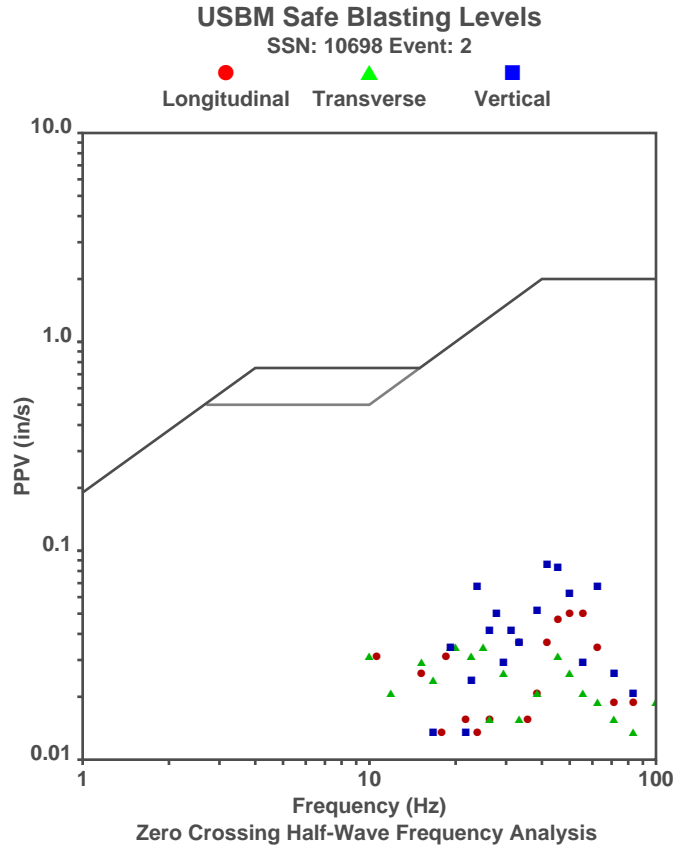
Summary Data

	L	T	V
PPV (in/s):	0.048	0.033	0.083
FREQ (HZ):	55.6	25	41.7
PD (.001'')	0.38	0.45	0.32
PPA (g):	0.046	0.026	0.078

Peak Vector Sum: 0.085 in/s
Peak Air Pressure: 110 dB
 0.0009 psi @ 1.4 HZ

Shaketable Calibrated

On: 11/09/2018 (UTC -07:00)
By: Vibra-Tech, Inc.
 2700 Holloway Road - Suite 113
 Louisville, KY 40203 U.S.A.



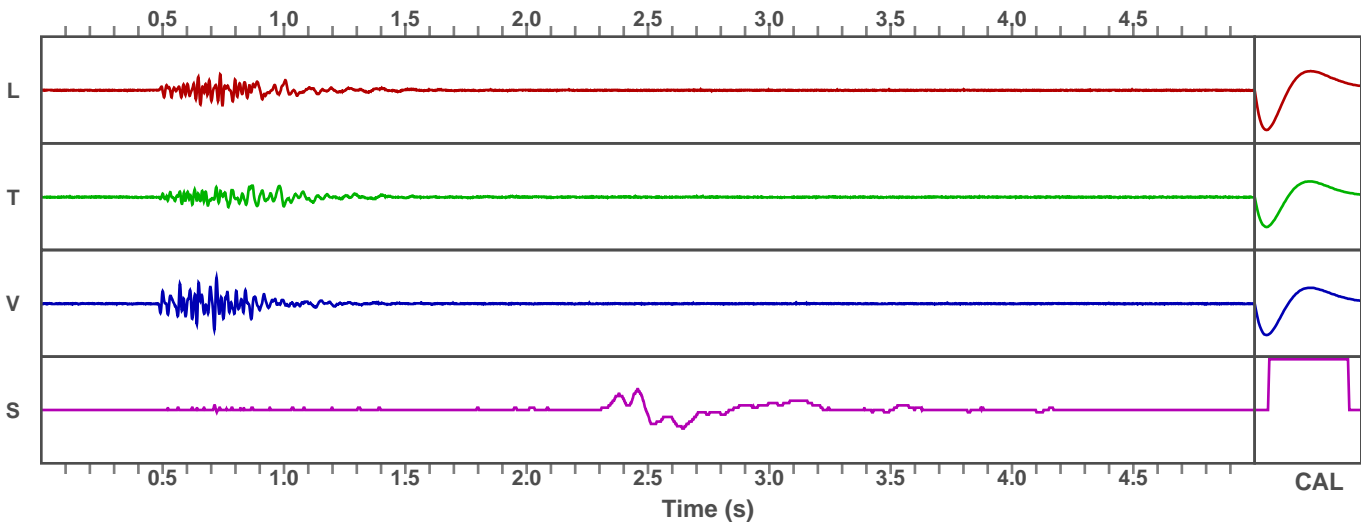
Zero Crossing Half-Wave Frequency Analysis

Waveform Graph Scale

Time Scale: 0.1 s
Seismic Scale: +/- 0.16 in/s
Sound Scale: +/- 0.0023 psi

Velocity Waveform

SSN: 10698 Event: 2



Vibra-Tech Engineers, Inc. Seismic Analysis

Stop Event Report

Serial No: 10698 v6.13
Client: COUNTY OF MARIN
Operation: SAN RAFAEL ROCK QUARRY
Location: 16 MARIN BAY PARK CT.
Distance:
Operator: VIBRA-TECH IP2
Comment: WILLIAM HOSKEN RES.

Begin Date: 04/16/2019 07:03:30 (UTC-7)
End Date: 04/16/2019 11:55:36 (UTC-7)
Events over Trigger: 0 (0--1)
Record Time: 5.0 s
Seismic Trigger: 0.030 in/s
Sound Trigger: N/A
Battery Level: 8.3

Additional Info:
VIRTUAL CHECK
j-GEO-01252
N37 59.524, W122 27.373

Shaketable Calibrated: 11/09/2018
By: Vibra-Tech, Inc.
2700 Holloway Road - Suite 113
Louisville, KY 40299 U.S.A.
TEL: 502.240.9900 FAX: 502.240.9902

Dynamic Calibration Graph:



Cal Test Results:

Longitudinal: Pass
Transverse: Pass
Vertical: Pass
Sound: Pass

The seismograph located at 16 Marin Bay Park Court (S/N 10698) did not trigger during the shot on April 16, 2019 at approximately 11:30 indicating the ground vibrations produced were below the ground trigger level of 0.030 in/sec.

Seismic Analysis

Velocity Waveform Analysis

Serial Number: 10698
Firmware Version: 0C-06.13
Event Date: 05/03/2019 11:31:05 (UTC -07:00)
Event number: 3
Recording Time: 5 s
Client: COUNTY OF MARIN
Operation: SAN RAFAEL ROCK QUARRY
Location: 16 MARIN BAY PARK CT.
Distance:
Operator: VIBRA-TECH IP2
Comment: WILLIAM HOSKEN RES.
Seismic Trigger: 0.03 in/s
Sound Trigger: OFF

Additional Info:

j-GEO-01252
 N37 59.524, W122 27.373

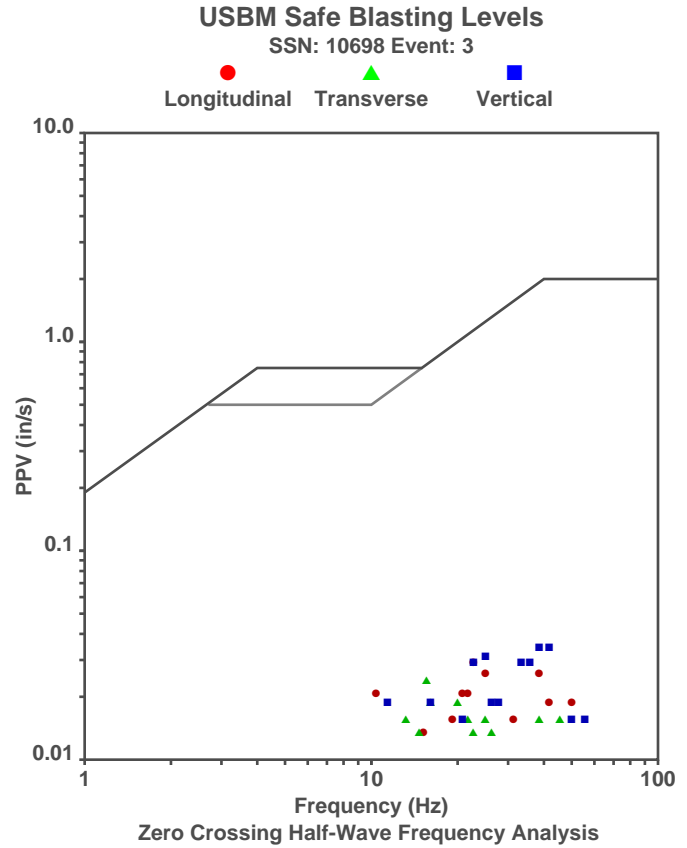
Summary Data

	L	T	V
PPV (in/s):	0.028	0.023	0.033
FREQ (HZ):	22.7	15.6	35.7
PD (.001'')	0.34	0.24	0.2
PPA (g):	0.02	0.02	0.026

Peak Vector Sum: 0.038 in/s
Peak Air Pressure: 111 dB
 0.001 psi @ 1.6 HZ

Shaketable Calibrated

On: 11/09/2018 (UTC -07:00)
By: Vibra-Tech, Inc.
 2700 Holloway Road - Suite 113
 Louisville, KY 40203 U.S.A.

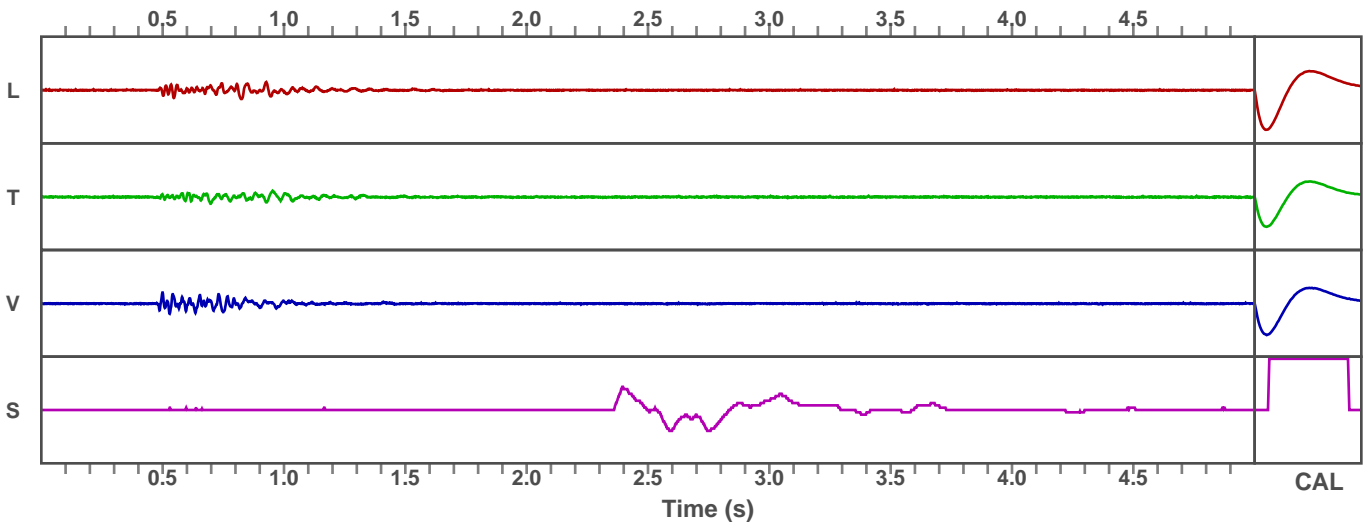


Waveform Graph Scale

Time Scale: 0.1 s
Seismic Scale: +/- 0.16 in/s
Sound Scale: +/- 0.0023 psi

Velocity Waveform

SSN: 10698 Event: 3



Seismic Analysis

Velocity Waveform Analysis

Serial Number: 10698
Firmware Version: 0C-06.13
Event Date: 05/29/2019 12:43:07 (UTC -07:00)
Event number: 4
Recording Time: 5 s
Client: COUNTY OF MARIN
Operation: SAN RAFAEL ROCK QUARRY
Location: 16 MARIN BAY PARK CT.
Distance:
Operator: VIBRA-TECH IP2
Comment: WILLIAM HOSKEN RES.
Seismic Trigger: 0.03 in/s
Sound Trigger: OFF

Additional Info:

j-GEO-01252
 N37 59.524, W122 27.373

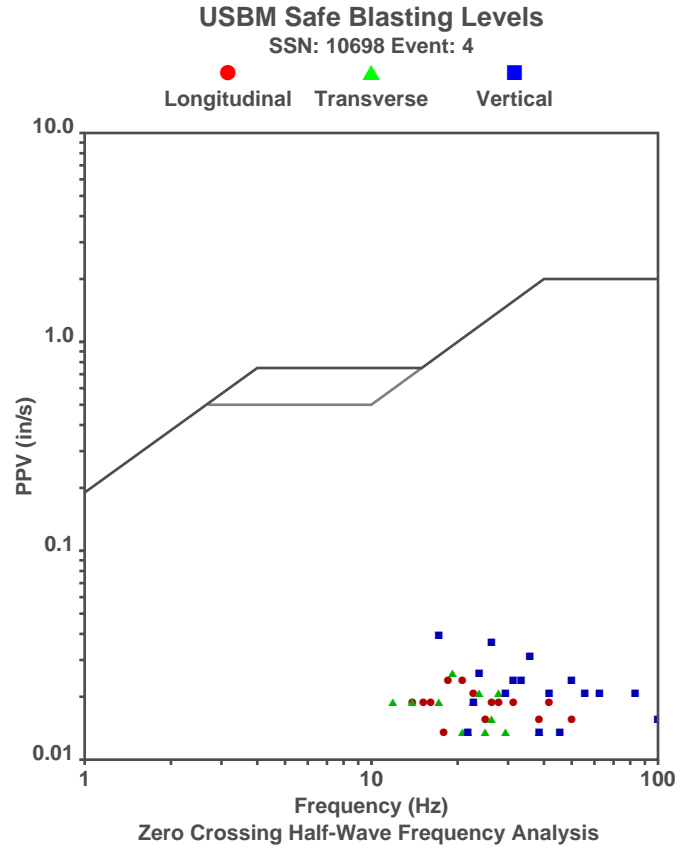
Summary Data

	L	T	V
PPV (in/s):	0.023	0.025	0.038
FREQ (HZ):	20.8	19.2	17.2
PD (.001"):	0.24	0.29	0.21
PPA (g):	0.013	0.013	0.026

Peak Vector Sum: 0.043 in/s
Peak Air Pressure: 109 dB
 0.0008 psi @ 2.6 HZ

Shaketable Calibrated

On: 11/09/2018 (UTC -07:00)
By: Vibra-Tech, Inc.
 2700 Holloway Road - Suite 113
 Louisville, KY 40203 U.S.A.

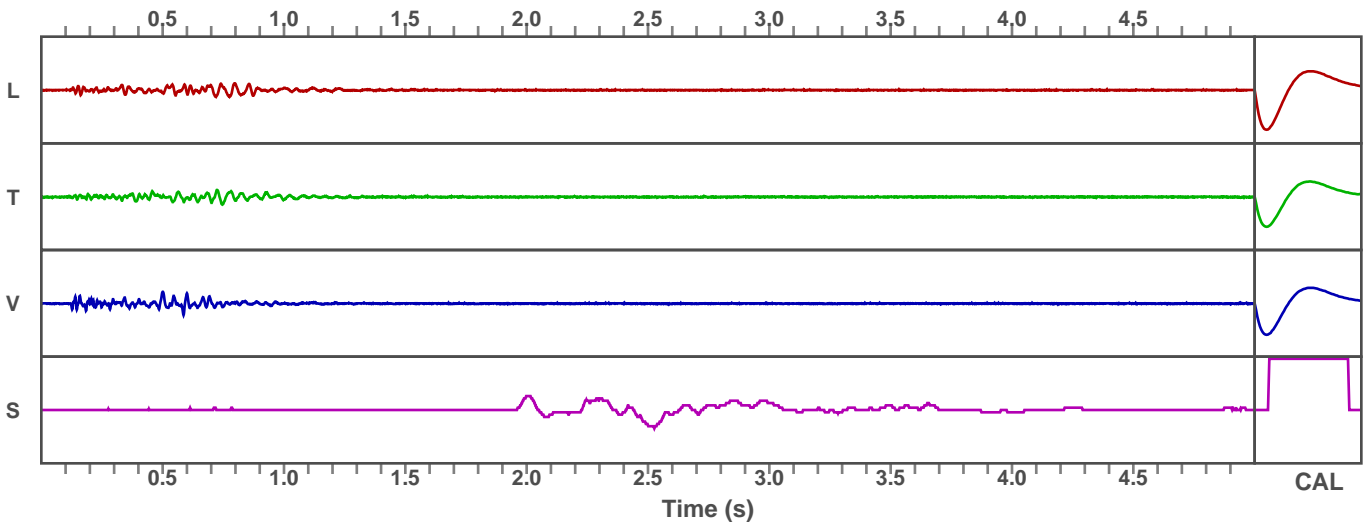


Waveform Graph Scale

Time Scale: 0.1 s
Seismic Scale: +/- 0.16 in/s
Sound Scale: +/- 0.0023 psi

Velocity Waveform

SSN: 10698 Event: 4



Seismic Analysis

Velocity Waveform Analysis

Serial Number: 10698
Firmware Version: 0C-06.13
Event Date: 06/19/2019 11:31:19 (UTC -07:00)
Event number: 5
Recording Time: 5 s
Client: COUNTY OF MARIN
Operation: SAN RAFAEL ROCK QUARRY
Location: 16 MARIN BAY PARK CT.
Distance:
Operator: VIBRA-TECH IP2
Comment: WILLIAM HOSKEN RES.
Seismic Trigger: 0.03 in/s
Sound Trigger: OFF

Additional Info:

j-GEO-01252
 N37 59.524, W122 27.373

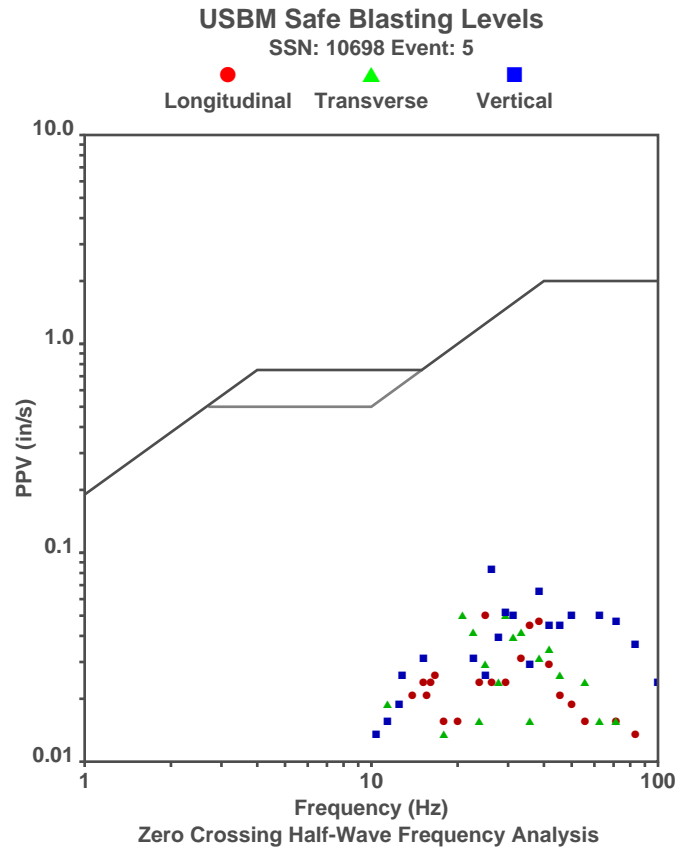
Summary Data

	L	T	V
PPV (in/s):	0.048	0.048	0.08
FREQ (HZ):	25	20.8	26.3
PD (.001'')	0.46	0.36	0.48
PPA (g):	0.033	0.046	0.065

Peak Vector Sum: 0.098 in/s
Peak Air Pressure: 111 dB
 0.001 psi @ 4.5 HZ

Shaketable Calibrated

On: 11/09/2018 (UTC -07:00)
By: Vibra-Tech, Inc.
 2700 Holloway Road - Suite 113
 Louisville, KY 40203 U.S.A.

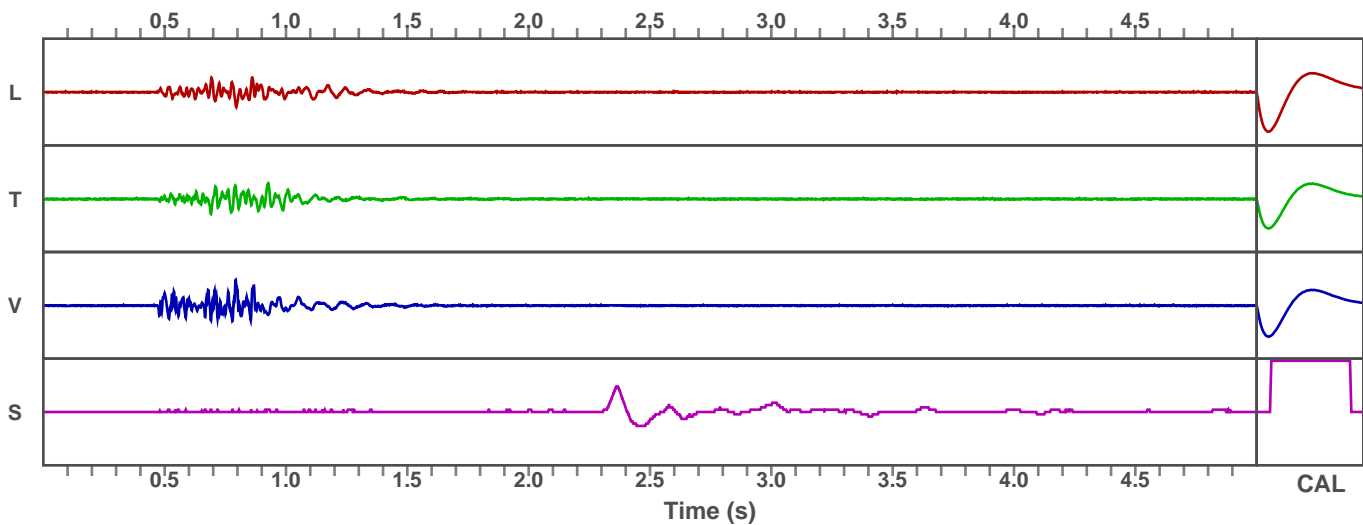


Waveform Graph Scale

Time Scale: 0.1 s
Seismic Scale: +/- 0.16 in/s
Sound Scale: +/- 0.0023 psi

Velocity Waveform

SSN: 10698 Event: 5



Seismic Analysis

Velocity Waveform Analysis

Serial Number: 10698
Firmware Version: 0C-06.13
Event Date: 07/10/2019 11:33:07 (UTC -07:00)
Event number: 6
Recording Time: 5 s
Client: COUNTY OF MARIN
Operation: SAN RAFAEL ROCK QUARRY
Location: 16 MARIN BAY PARK CT.
Distance:
Operator: VIBRA-TECH IP2
Comment: WILLIAM HOSKEN RES.
Seismic Trigger: 0.03 in/s
Sound Trigger: OFF

Additional Info:

j-GEO-01252
 N37 59.524, W122 27.373

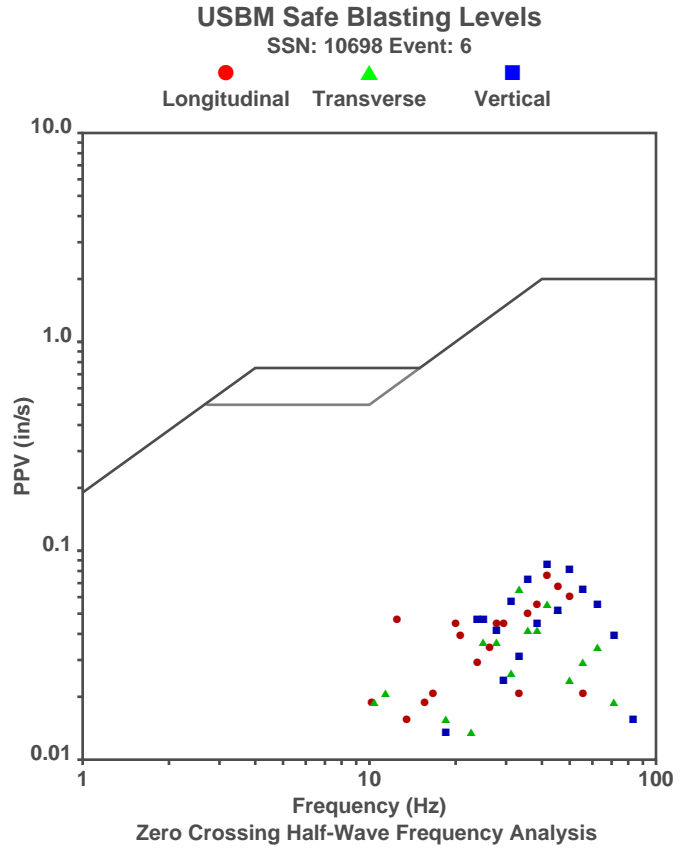
Summary Data

	L	T	V
PPV (in/s):	0.073	0.063	0.083
FREQ (HZ):	41.7	33.3	41.7
PD (.001'')	0.46	0.33	0.37
PPA (g):	0.052	0.052	0.072

Peak Vector Sum: 0.11 in/s
Peak Air Pressure: 110 dB
 0.0009 psi @ 4.3 HZ

Shaketable Calibrated

On: 11/09/2018 (UTC -07:00)
By: Vibra-Tech, Inc.
 2700 Holloway Road - Suite 113
 Louisville, KY 40203 U.S.A.

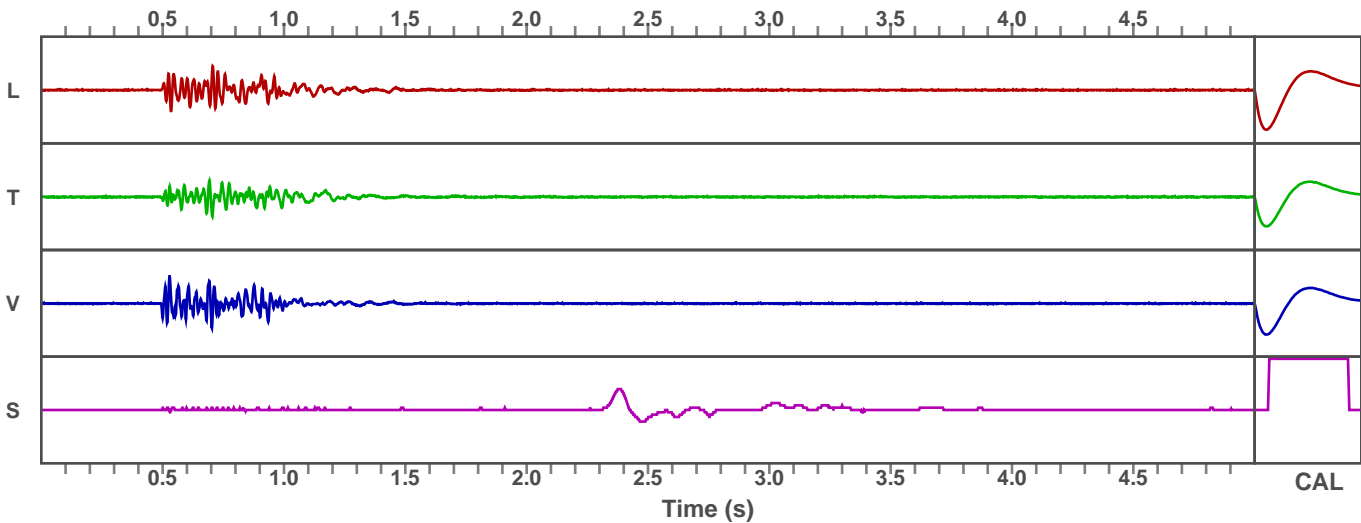


Waveform Graph Scale

Time Scale: 0.1 s
Seismic Scale: +/- 0.16 in/s
Sound Scale: +/- 0.0023 psi

Velocity Waveform

SSN: 10698 Event: 6



Seismic Analysis

Velocity Waveform Analysis

Serial Number: 10698
Firmware Version: 0C-06.13
Event Date: 07/22/2019 11:34:05 (UTC -07:00)
Event number: 7
Recording Time: 5 s
Client: COUNTY OF MARIN
Operation: SAN RAFAEL ROCK QUARRY
Location: 16 MARIN BAY PARK CT.
Distance:
Operator: VIBRA-TECH IP2
Comment: WILLIAM HOSKEN RES.
Seismic Trigger: 0.03 in/s
Sound Trigger: OFF

Additional Info:

j-GEO-01252
 N37 59.524, W122 27.373

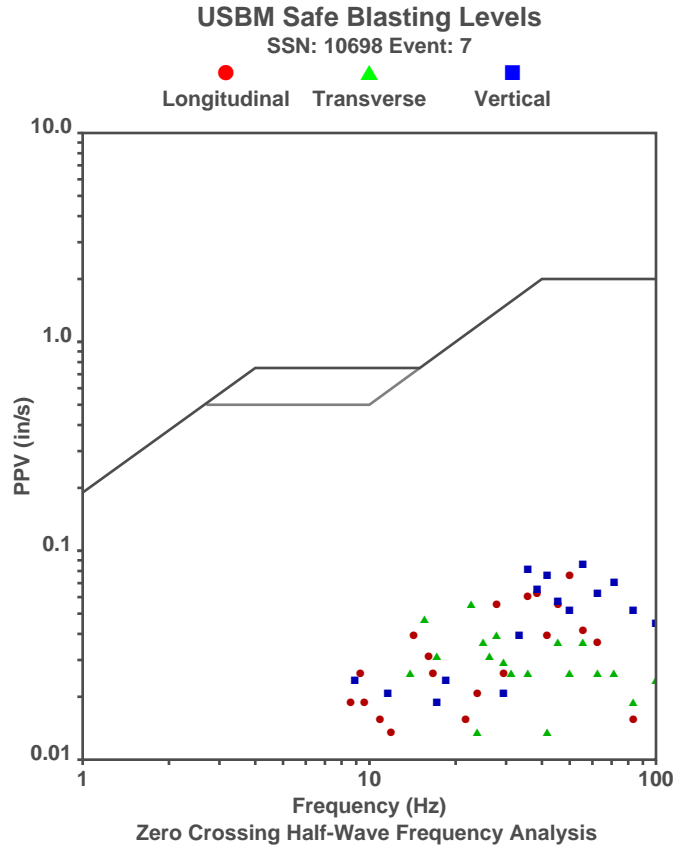
Summary Data

	L	T	V
PPV (in/s):	0.073	0.053	0.083
FREQ (HZ):	50	22.7	55.6
PD (.001'')	0.45	0.44	0.37
PPA (g):	0.059	0.039	0.091

Peak Vector Sum: 0.098 in/s
Peak Air Pressure: 111 dB
 0.001 psi @ 2.3 HZ

Shaketable Calibrated

On: 11/09/2018 (UTC -07:00)
By: Vibra-Tech, Inc.
 2700 Holloway Road - Suite 113
 Louisville, KY 40203 U.S.A.

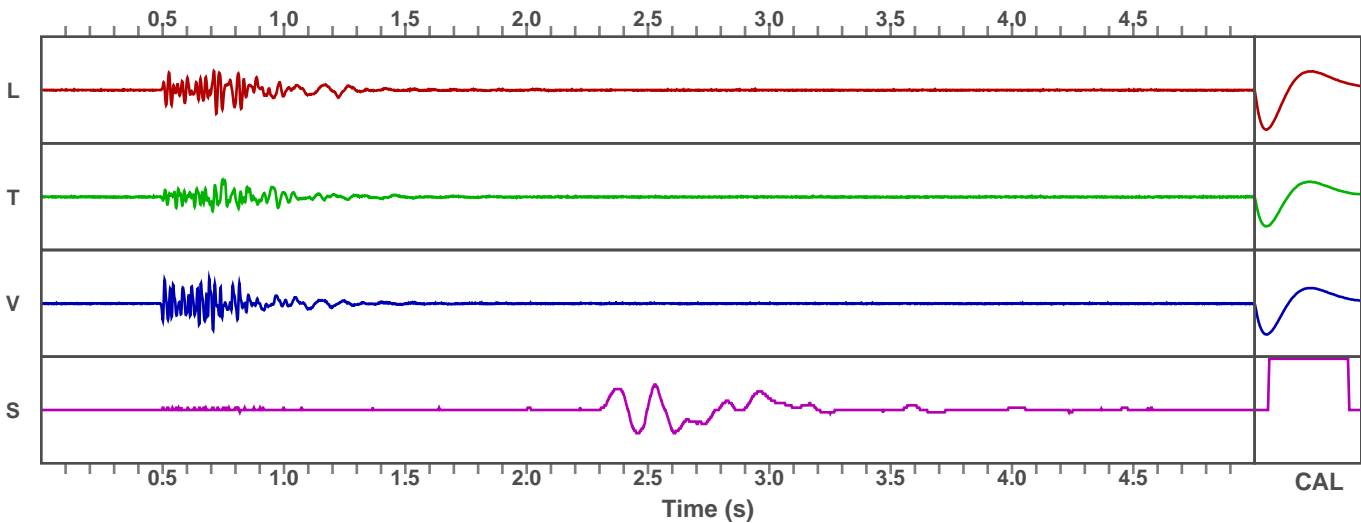


Waveform Graph Scale

Time Scale: 0.1 s
Seismic Scale: +/- 0.16 in/s
Sound Scale: +/- 0.0023 psi

Velocity Waveform

SSN: 10698 Event: 7



Vibra-Tech Engineers, Inc. Seismic Analysis

Stop Event Report

Serial No: 7427 v6.13
Client: COUNTY OF MARIN
Operation: SAN RAFAEL ROCK QUARRY
Location: ON QUARRY PROPERTY
Distance:
Operator: VIBRA-TECH IP2
Comment:

Begin Date: 02/12/2019 06:00:52 (UTC-8)
End Date: 02/12/2019 20:00:00 (UTC-8)
Events over Trigger: 0 (6-5)
Record Time: 5.0 s
Seismic Trigger: 0.030 in/s
Sound Trigger: N/A
Battery Level: 8.3

Additional Info:

j-GEO-01253
N37 59.481, W122 27.256

Shaketable Calibrated: 11/09/2018
By: Vibra-Tech, Inc.
2700 Holloway Road - Suite 113
Louisville, KY 40299 U.S.A.
TEL: 502.240.9900 FAX: 502.240.9902

Dynamic Calibration Graph:



Cal Test Results:

Longitudinal: Pass
Transverse: Pass
Vertical: Pass
Sound: Pass

The seismograph on Quarry Property (S/N 7427) did not trigger during the shot on February 12, 2019 at approximately 11:33 indicating the ground vibrations produced were below the ground trigger level of 0.030 in/sec.

Vibra-Tech Engineers, Inc. Seismic Analysis

Stop Event Report

Serial No: 7427 v6.13
Client: COUNTY OF MARIN
Operation: SAN RAFAEL ROCK QUARRY
Location: ON QUARRY PROPERTY
Distance:
Operator: VIBRA-TECH IP2
Comment:

Begin Date: 03/19/2019 06:00:53 (UTC-7)
End Date: 03/19/2019 20:00:00 (UTC-7)
Events over Trigger: 0 (6-5)
Record Time: 5.0 s
Seismic Trigger: 0.030 in/s
Sound Trigger: N/A
Battery Level: 8.3

Additional Info:

j-GEO-01253
N37 59.481, W122 27.256

Shaketable Calibrated: 11/09/2018
By: Vibra-Tech, Inc.
2700 Holloway Road - Suite 113
Louisville, KY 40299 U.S.A.
TEL: 502.240.9900 FAX: 502.240.9902

Dynamic Calibration Graph:



Cal Test Results:

Longitudinal: Pass
Transverse: Pass
Vertical: Pass
Sound: Pass

The seismograph on Quarry Property (S/N 7427) did not trigger during the shot on March 19, 2019 at approximately 11:32 indicating the ground vibrations produced were below the ground trigger level of 0.030 in/sec.

Seismic Analysis

Velocity Waveform Analysis

Serial Number: 7427
Firmware Version: 0C-06.13
Event Date: 04/04/2019 11:33:40 (UTC -07:00)
Event number: 6
Recording Time: 5 s
Client: COUNTY OF MARIN
Operation: SAN RAFAEL ROCK QUARRY
Location: ON QUARRY PROPERTY
Distance:
Operator: VIBRA-TECH IP2
Comment:
Seismic Trigger: 0.03 in/s
Sound Trigger: OFF

Additional Info:

j-GEO-01253
 N37 59.481, W122 27.256

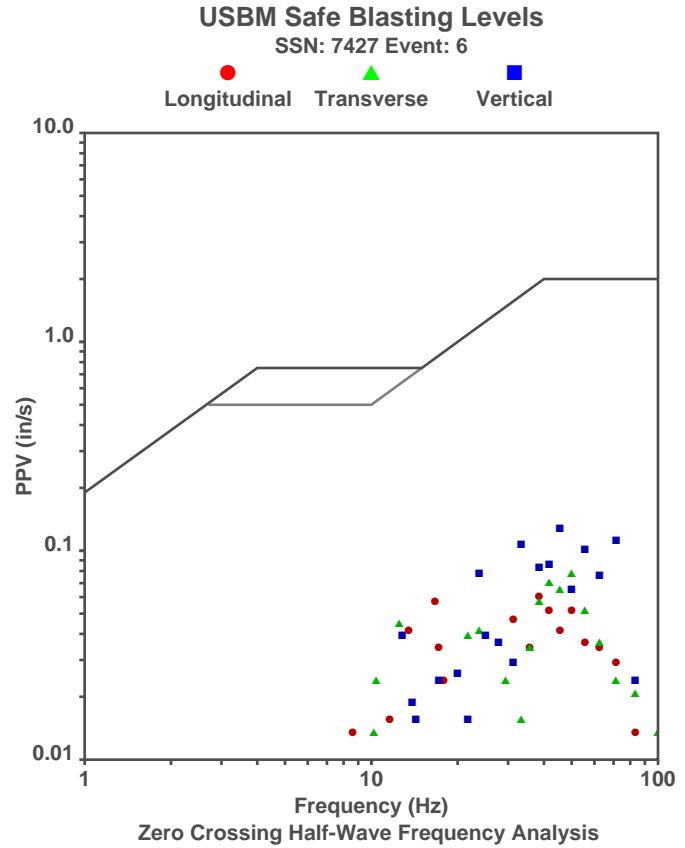
Summary Data

	L	T	V
PPV (in/s):	0.058	0.075	0.123
FREQ (HZ):	38.5	50	41.7
PD (.001"):	0.6	0.46	0.54
PPA (g):	0.046	0.065	0.117

Peak Vector Sum: 0.135 in/s
Peak Air Pressure: 114 dB
 0.0014 psi @ 8.1 HZ

Shaketable Calibrated

On: 11/09/2018 (UTC -07:00)
By: Vibra-Tech, Inc.
 2700 Holloway Road - Suite 113
 Louisville, KY 40203 U.S.A.

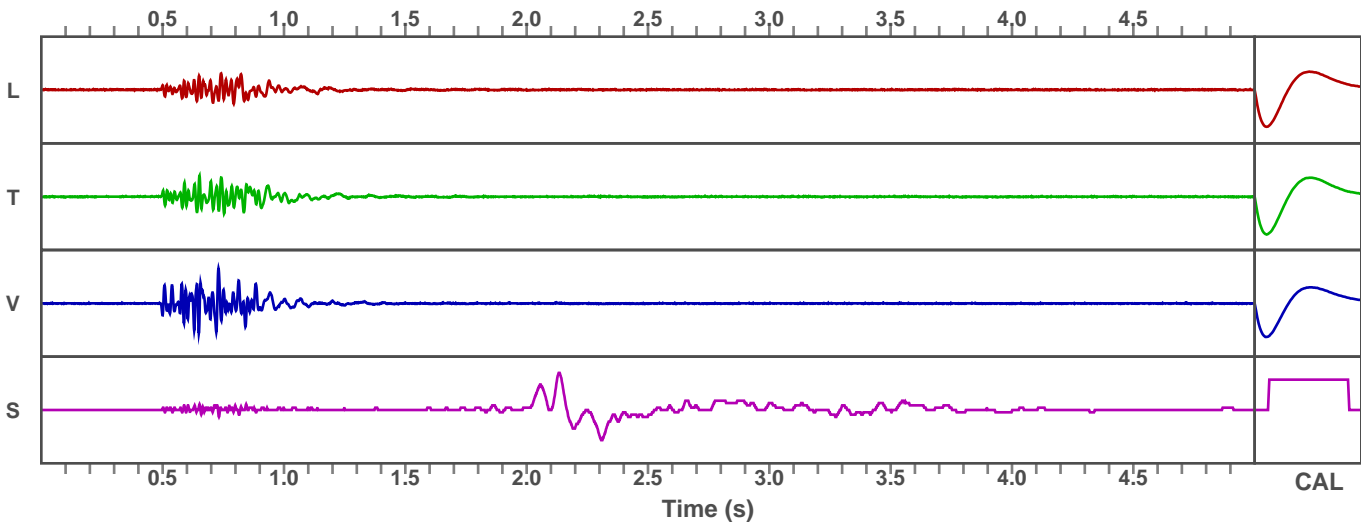


Waveform Graph Scale

Time Scale: 0.1 s
Seismic Scale: +/- 0.1845 in/s
Sound Scale: +/- 0.0023 psi

Velocity Waveform

SSN: 7427 Event: 6



Seismic Analysis

Velocity Waveform Analysis

Serial Number: 7427
Firmware Version: 0C-06.13
Event Date: 04/16/2019 11:30:34 (UTC -07:00)
Event number: 7
Recording Time: 5 s
Client: COUNTY OF MARIN
Operation: SAN RAFAEL ROCK QUARRY
Location: ON QUARRY PROPERTY
Distance:
Operator: VIBRA-TECH IP2
Comment:
Seismic Trigger: 0.03 in/s
Sound Trigger: OFF

Additional Info:

j-GEO-01253
N37 59.481, W122 27.256

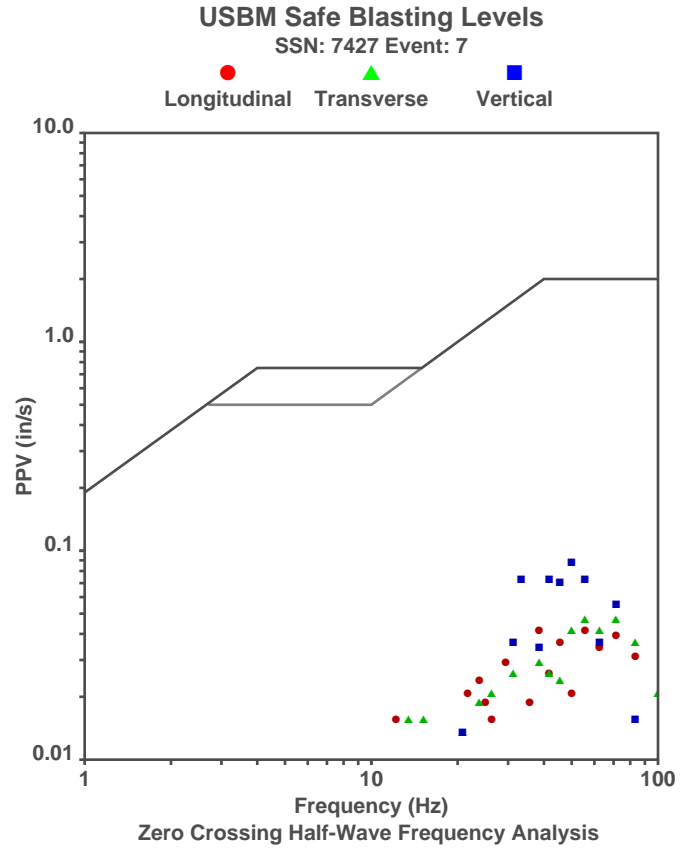
Summary Data

	L	T	V
PPV (in/s):	0.04	0.045	0.085
FREQ (HZ):	55.6	55.6	50
PD (.001'')	0.23	0.29	0.35
PPA (g):	0.059	0.059	0.104

Peak Vector Sum: 0.09 in/s
Peak Air Pressure: 103 dB
 0.0004 psi @ 5.4 HZ

Shaketable Calibrated

On: 11/09/2018 (UTC -07:00)
By: Vibra-Tech, Inc.
 2700 Holloway Road - Suite 113
 Louisville, KY 40203 U.S.A.

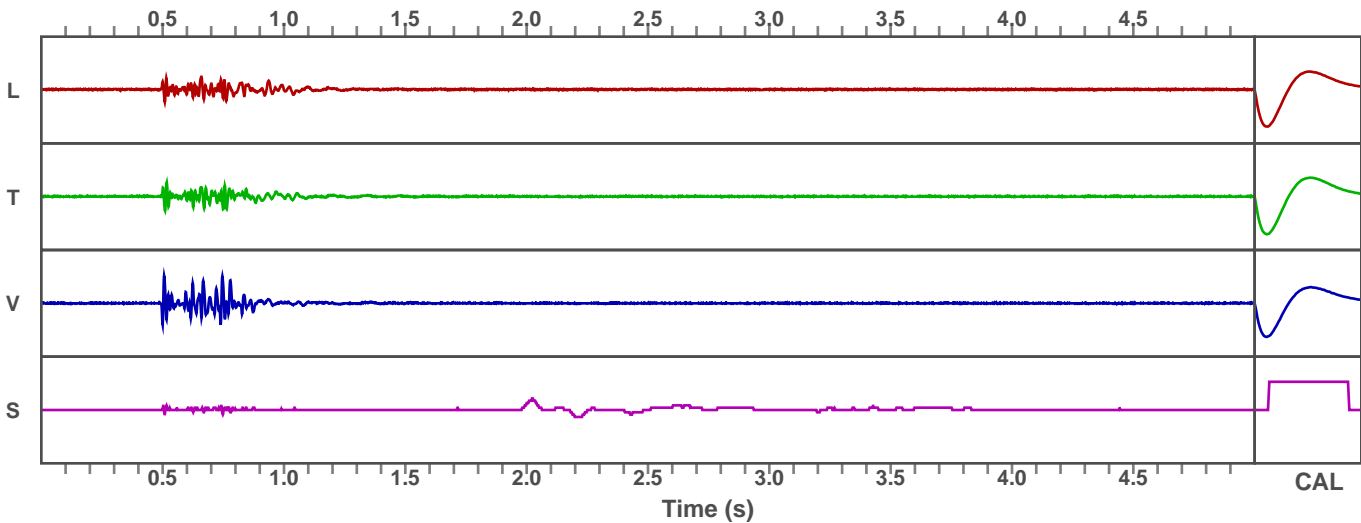


Waveform Graph Scale

Time Scale: 0.1 s
Seismic Scale: +/- 0.16 in/s
Sound Scale: +/- 0.0023 psi

Velocity Waveform

SSN: 7427 Event: 7



Seismic Analysis

Velocity Waveform Analysis

Serial Number: 7427
Firmware Version: 0C-06.13
Event Date: 05/03/2019 11:31:05 (UTC -07:00)
Event number: 8
Recording Time: 5 s
Client: COUNTY OF MARIN
Operation: SAN RAFAEL ROCK QUARRY
Location: ON QUARRY PROPERTY
Distance:
Operator: VIBRA-TECH IP2
Comment:
Seismic Trigger: 0.03 in/s
Sound Trigger: OFF

Additional Info:

j-GEO-01253
 N37 59.481, W122 27.256

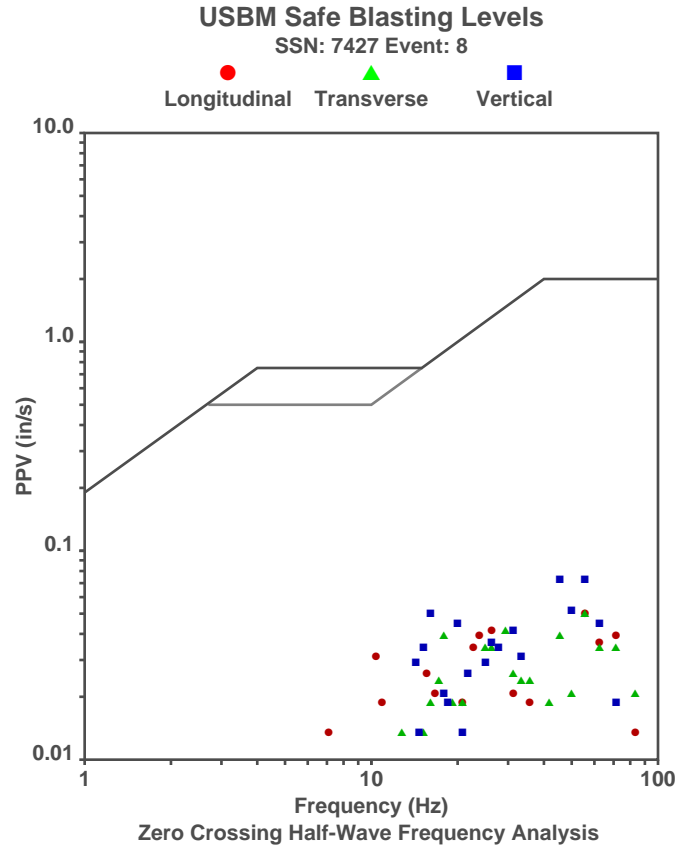
Summary Data

	L	T	V
PPV (in/s):	0.048	0.048	0.07
FREQ (HZ):	55.6	55.6	45.5
PD (.001''):	0.53	0.42	0.4
PPA (g):	0.046	0.046	0.059

Peak Vector Sum: 0.085 in/s
Peak Air Pressure: 114 dB
 0.0014 psi @ 3.4 HZ

Shaketable Calibrated

On: 11/09/2018 (UTC -07:00)
By: Vibra-Tech, Inc.
 2700 Holloway Road - Suite 113
 Louisville, KY 40203 U.S.A.

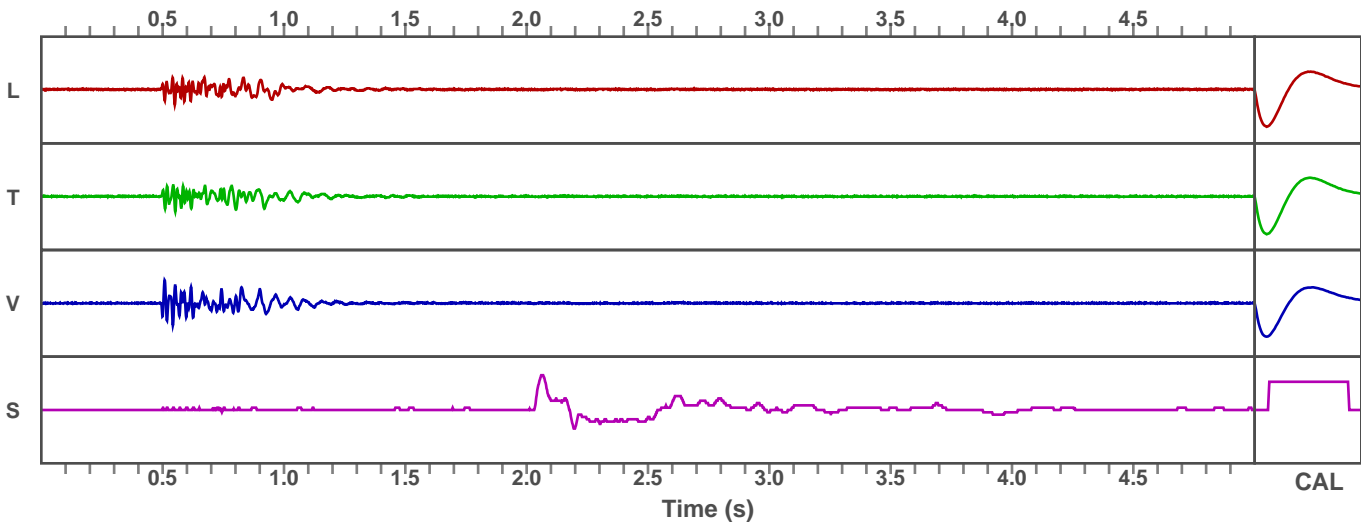


Waveform Graph Scale

Time Scale: 0.1 s
Seismic Scale: +/- 0.16 in/s
Sound Scale: +/- 0.0023 psi

Velocity Waveform

SSN: 7427 Event: 8



Seismic Analysis

Velocity Waveform Analysis

Serial Number: 7427
Firmware Version: 0C-06.13
Event Date: 05/29/2019 12:43:06 (UTC -07:00)
Event number: 10
Recording Time: 5 s
Client: COUNTY OF MARIN
Operation: SAN RAFAEL ROCK QUARRY
Location: ON QUARRY PROPERTY
Distance:
Operator: VIBRA-TECH IP2
Comment:
Seismic Trigger: 0.03 in/s
Sound Trigger: OFF

Additional Info:

j-GEO-01253
N37 59.481, W122 27.256

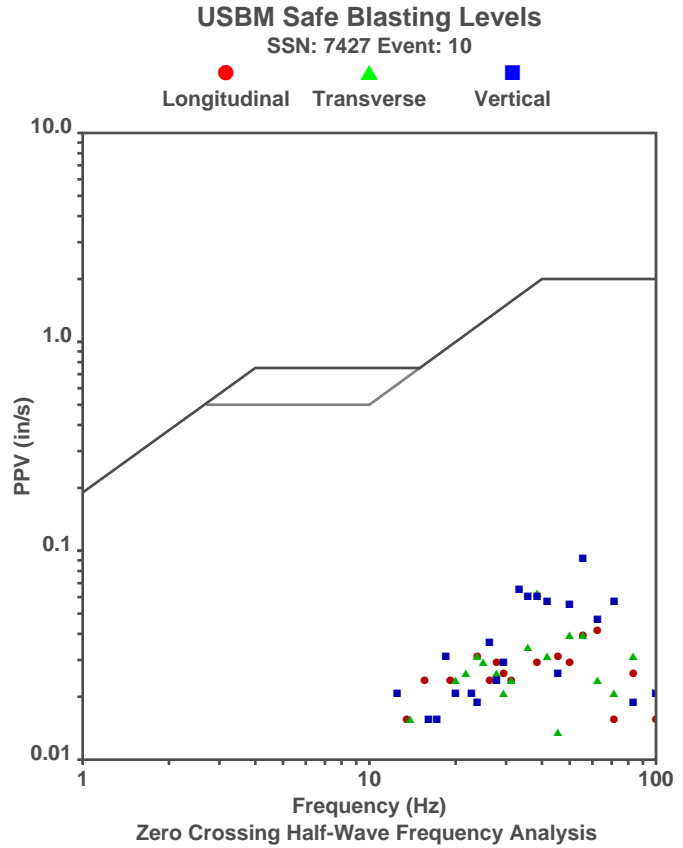
Summary Data

	L	T	V
PPV (in/s):	0.04	0.06	0.088
FREQ (HZ):	62.5	38.5	55.6
PD (.001'')	0.41	0.35	0.41
PPA (g):	0.052	0.052	0.098

Peak Vector Sum: 0.095 in/s
Peak Air Pressure: 112 dB
 0.0011 psi @ 3.6 HZ

Shaketable Calibrated

On: 11/09/2018 (UTC -07:00)
By: Vibra-Tech, Inc.
 2700 Holloway Road - Suite 113
 Louisville, KY 40203 U.S.A.

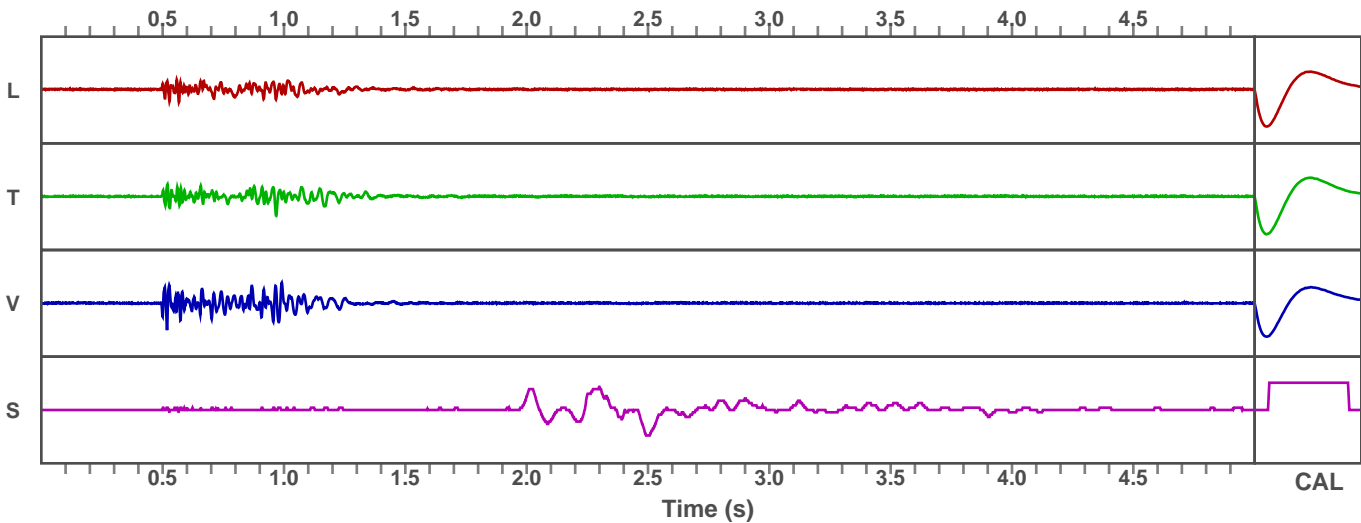


Waveform Graph Scale

Time Scale: 0.1 s
Seismic Scale: +/- 0.16 in/s
Sound Scale: +/- 0.0023 psi

Velocity Waveform

SSN: 7427 Event: 10



Seismic Analysis

Velocity Waveform Analysis

Serial Number: 7427
Firmware Version: 0C-06.13
Event Date: 06/19/2019 11:31:19 (UTC -07:00)
Event number: 11
Recording Time: 5 s
Client: COUNTY OF MARIN
Operation: SAN RAFAEL ROCK QUARRY
Location: ON QUARRY PROPERTY
Distance:
Operator: VIBRA-TECH IP2
Comment:
Seismic Trigger: 0.03 in/s
Sound Trigger: OFF

Additional Info:

j-GEO-01253
N37 59.481, W122 27.256

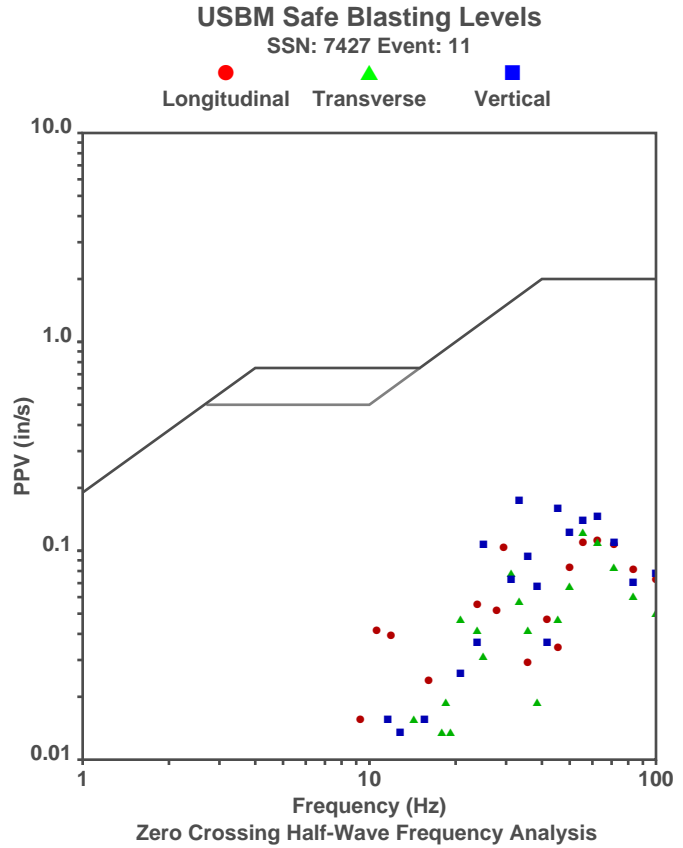
Summary Data

	L	T	V
PPV (in/s):	0.108	0.118	0.168
FREQ (HZ):	62.5	55.6	31.3
PD (.001"):	0.8	0.59	0.83
PPA (g):	0.143	0.111	0.15

Peak Vector Sum: 0.208 in/s
Peak Air Pressure: 114 dB
 0.0014 psi @ 6.1 HZ

Shaketable Calibrated

On: 11/09/2018 (UTC -07:00)
By: Vibra-Tech, Inc.
 2700 Holloway Road - Suite 113
 Louisville, KY 40203 U.S.A.

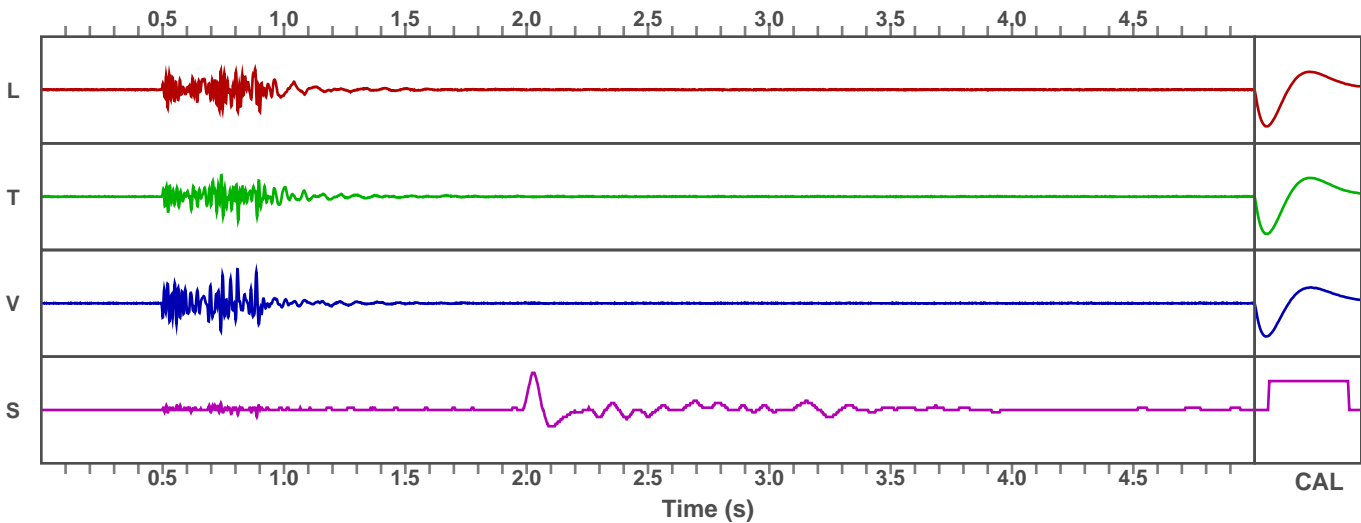


Waveform Graph Scale

Time Scale: 0.1 s
Seismic Scale: +/- 0.252 in/s
Sound Scale: +/- 0.0023 psi

Velocity Waveform

SSN: 7427 Event: 11



Seismic Analysis

Velocity Waveform Analysis

Serial Number: 7427
Firmware Version: 0C-06.13
Event Date: 07/10/2019 11:33:06 (UTC -07:00)
Event number: 12
Recording Time: 5 s
Client: COUNTY OF MARIN
Operation: SAN RAFAEL ROCK QUARRY
Location: ON QUARRY PROPERTY
Distance:
Operator: VIBRA-TECH IP2
Comment:
Seismic Trigger: 0.03 in/s
Sound Trigger: OFF

Additional Info:

j-GEO-01253
 N37 59.481, W122 27.256

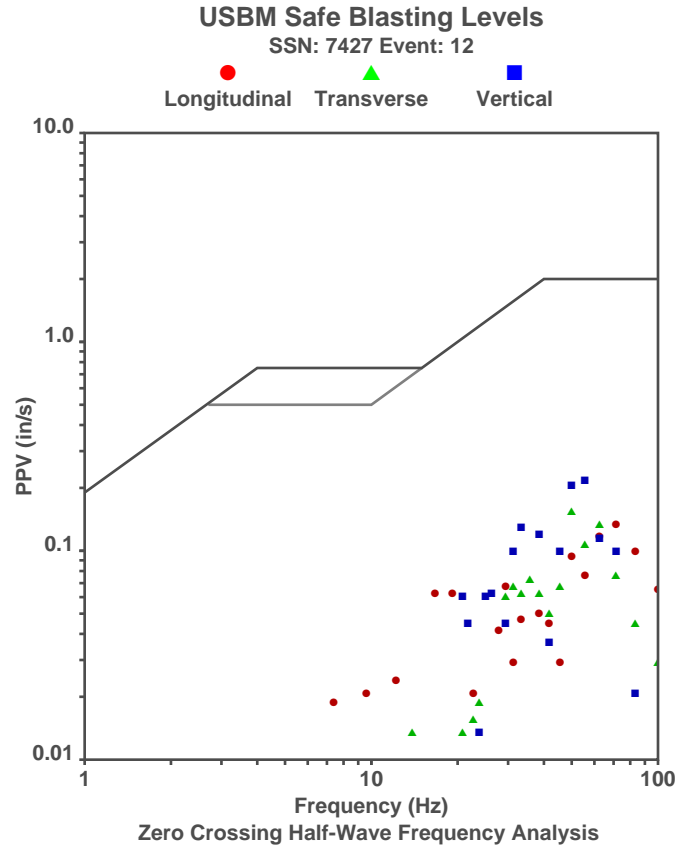
Summary Data

	L	T	V
PPV (in/s):	0.128	0.148	0.208
FREQ (HZ):	62.5	50	50
PD (.001''):	0.8	0.54	0.82
PPA (g):	0.143	0.15	0.169

Peak Vector Sum: 0.235 in/s
Peak Air Pressure: 112 dB
 0.0011 psi @ 4.9 HZ

Shaketable Calibrated

On: 11/09/2018 (UTC -07:00)
By: Vibra-Tech, Inc.
 2700 Holloway Road - Suite 113
 Louisville, KY 40203 U.S.A.

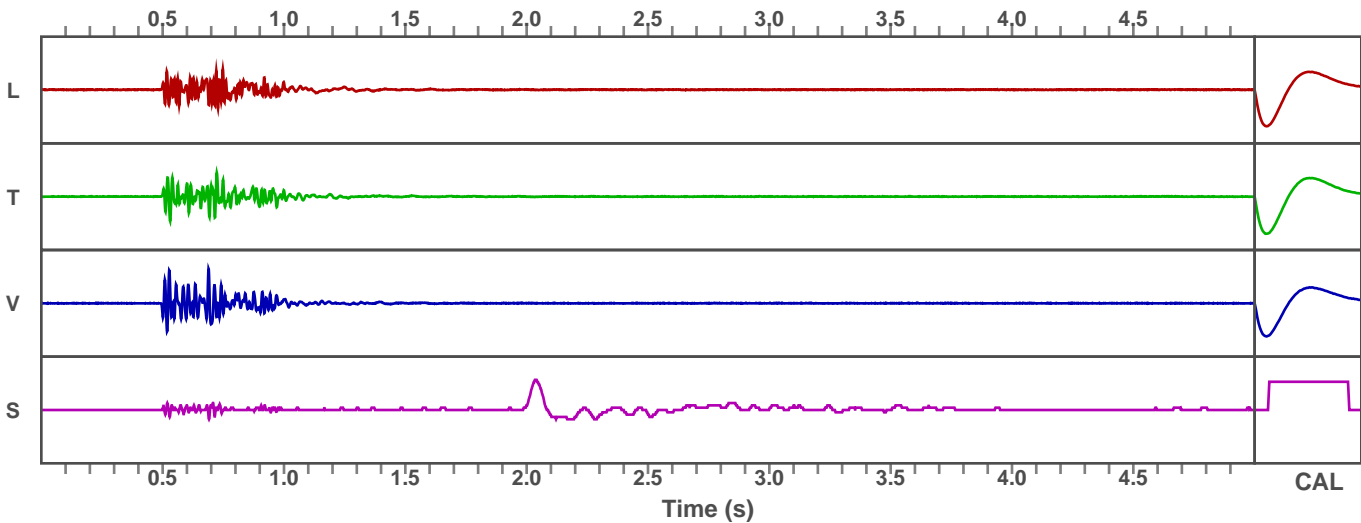


Waveform Graph Scale

Time Scale: 0.1 s
Seismic Scale: +/- 0.312 in/s
Sound Scale: +/- 0.0023 psi

Velocity Waveform

SSN: 7427 Event: 12



Seismic Analysis

Velocity Waveform Analysis

Serial Number: 7427
Firmware Version: 0C-06.13
Event Date: 07/22/2019 11:34:06 (UTC -07:00)
Event number: 13
Recording Time: 5 s
Client: COUNTY OF MARIN
Operation: SAN RAFAEL ROCK QUARRY
Location: ON QUARRY PROPERTY
Distance:
Operator: VIBRA-TECH IP2
Comment:
Seismic Trigger: 0.03 in/s
Sound Trigger: OFF

Additional Info:

j-GEO-01253
 N37 59.481, W122 27.256

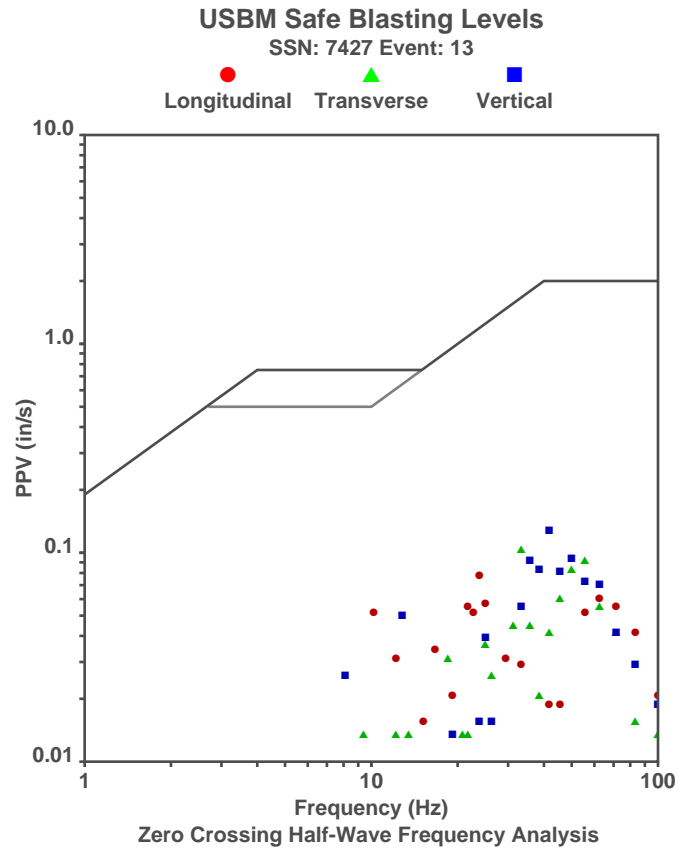
Summary Data

	L	T	V
PPV (in/s):	0.075	0.1	0.123
FREQ (HZ):	23.8	33.3	41.7
PD (.001''):	0.71	0.53	0.66
PPA (g):	0.059	0.085	0.085

Peak Vector Sum: 0.135 in/s
Peak Air Pressure: 114 dB
 0.0014 psi @ 3.8 HZ

Shaketable Calibrated

On: 11/09/2018 (UTC -07:00)
By: Vibra-Tech, Inc.
 2700 Holloway Road - Suite 113
 Louisville, KY 40203 U.S.A.



Waveform Graph Scale

Time Scale: 0.1 s
Seismic Scale: +/- 0.183 in/s
Sound Scale: +/- 0.0023 psi

Velocity Waveform

SSN: 7427 Event: 13

